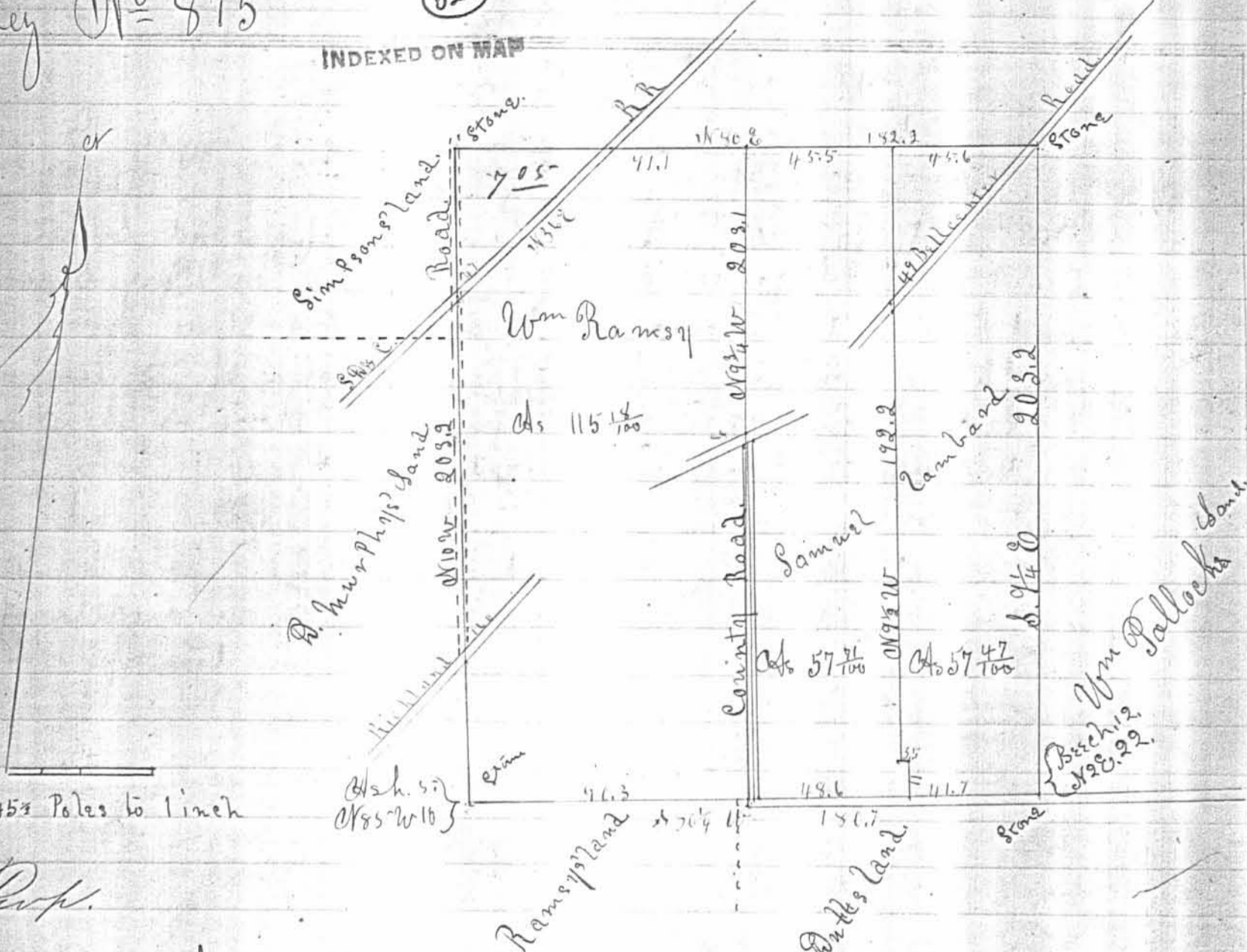


Survey No 875

325

INDEXED ON MAP



Scale 45 Poles to 1 inch

land Prop.

Surveyors Office Bellefontaine Ohio
Apr 25th 1866.

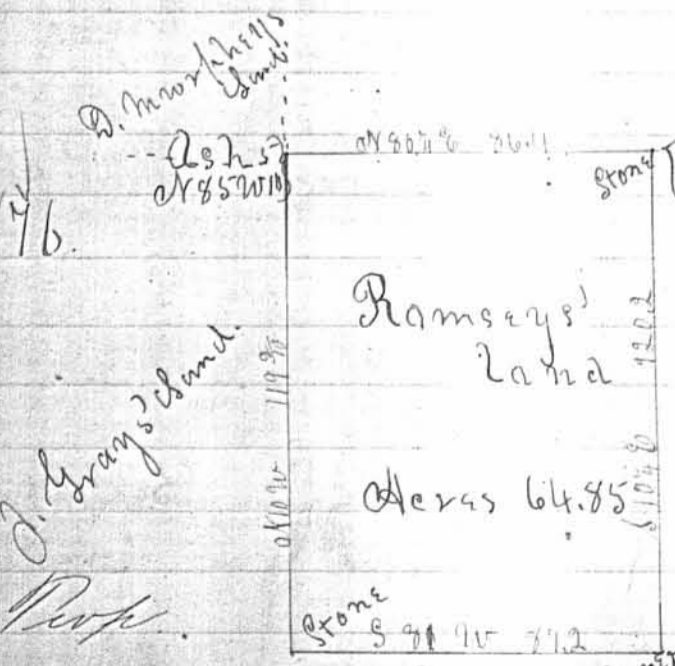
and Samuel Lambard as represented by the above plat part of Original Virginia Military Survey No 9972. Situate in Logan County Ohio.

J. S. Porter } Chain Men
Geo. Roberts }

Survey made Apr 16th 1866
J. D. McLaughlin Co. S.

Surveyed for Wm Ramsey

Survey No 876



Scale & Meridian in this Plat
The same as in the one above.

326

INDEXED ON MAP

INDEXED ON MAP 325 1P

land Prop.

Surveyed for Wm Ramsey as shown by the above plat part of Original Virginia Military Survey No 9951 in Logan County Ohio.
Survey made Apr 17th 1866.
County Surveyors Office Bellefontaine Apr 25th 1866
J. S. Porter } Chain Men
D. A. Cutting }