

Mr. L's 2nd Surv.

Start at SW^{1/4} Robt - M^{rs} Lanyon = g
 thence with pick S 83 W 21 poles to h
 thence S 6 E 23 poles to stake at i
 S 6 E = 7 pins + 81 lbs = 15.24.

to post j

Course from L to hook at L a
 = S 49 1/2 E

thence from post j = S 77 1/2 E - 1 - 1 - 5
 = 22.20 poles to hook L at a

Line B Start at stone SW^{1/4} Lanyon
 thence S 81 1/4 E

line strikes 2 links south of inside of SW^{1/4}
 of Bridge + 5 1/2 ft N. of cent Br at Or end
 Strike west end of Br at 4-5-10 L =
 86.40 poles

Turn of Br at 4-5 = 90 poles

Put in stake at - 5 - 6 - 0 = 112 poles = a
 pass over links Ellison & Killinger at
 east of 9 a -

L Or end

Set stake B in line at 8-4 = 168 poles at
 60 links east of fence Row

pass S 2 E to J Lanyon at 10-0-1/4 = 200 1/2

Set stake C at old to Solan & Dickel at
 10-3-40 = 207.60 poles

N 81 1/2 E

Line C start at \angle B Solan &
 Bronnelt Street $N 8\frac{1}{2} W = 7.2 - 0 - 10$
 140.4 poles To spike strike
 8 links East of former stake C
 $= 207.92 = C$

FB 217

Line d start $N W \angle$ Solan & N. side
 at C then west $2 - 0 - 10 = 40.40$
 to turn $N E \angle$ to Porter at $12\frac{1}{2}$ links
 west of former T B $(-168 - 12\frac{1}{2} = 167\frac{1}{2})$

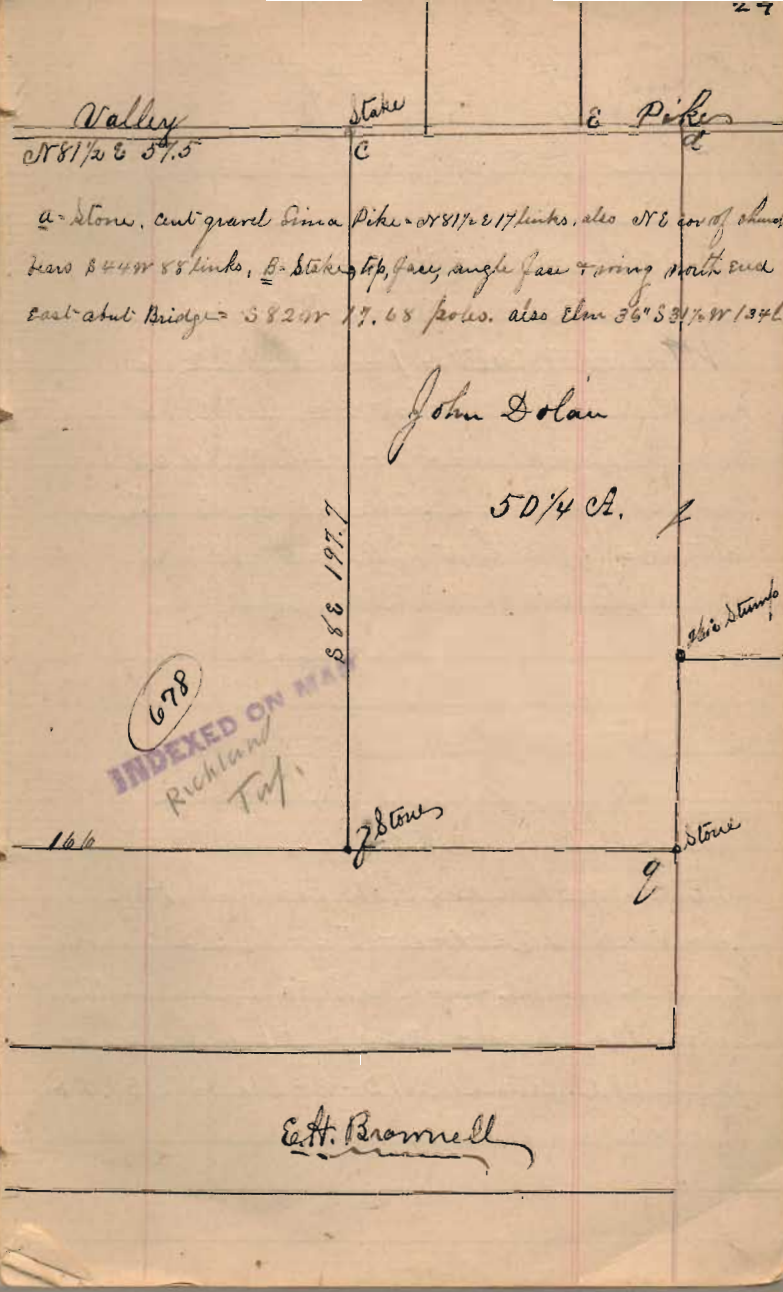
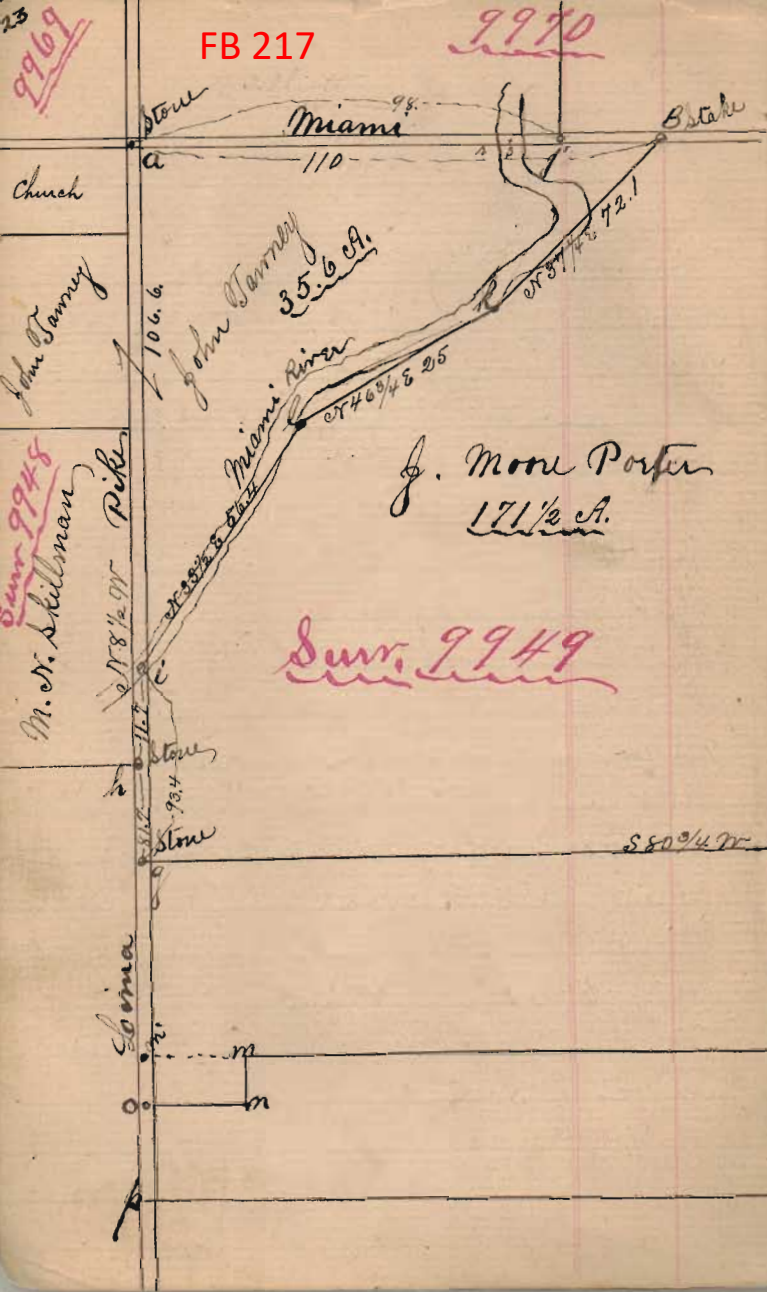
$a-d = N 80\frac{1}{4} E \quad 207.92$
 $a-j = \quad \quad \quad 98. \text{ to fence}$
 $a-B = \quad \quad \quad 110.$
 $a-c = \quad \quad \quad 167.52$

Reset stake at B West 2 poles which
 makes a B = 110 poles see stake a of
 line B. same as survey on main N. side
 With B. stone small top face at \angle face
 & rising $N \angle$ of east about 100 ft
 $S 82 W = 8 - 42 \text{ links} = 17.68 \text{ poles}$
 also Elm 36° di (marked) $S 31\frac{1}{2} W$
 $- 2 - 34^{\text{links}} = 536 \text{ poles}$

Line E start at \angle B, thence
 $S 52\frac{1}{2} E = 4 \text{ rods then on}$
 $S 87\frac{1}{2} E$
 at $3 - 5 - 48 = 71.80 \text{ poles run } N 52\frac{1}{2} W$
 9 poles + set stake for \angle pass W bank of river
 at 6-4-10
 at $94.36 \text{ poles turn } N 68 W 4 - 18 = 8.72$
 poles to stake in east side channel of river at
 Highlow Oak & Red Oak (protok in post
 at $7 - 6 - 41 = 153.64$
 strike $S 52\frac{1}{2} E$ & $62\frac{1}{2}$ feet from center of
 River at South \angle to E. survey

FB 217

9970



FB 712

Resurvey Part of C.R. 96
Richland Twp.
Logan Co., Ohio

140+00.00 - P.O.T. - Set R.R.
spike

135+00.00 - P.O.T. - Set R.R.
spike

130+80.48 - P.O.T. - Set R.R.
spike 100.00' from stone found
at the V.M.S. corner.

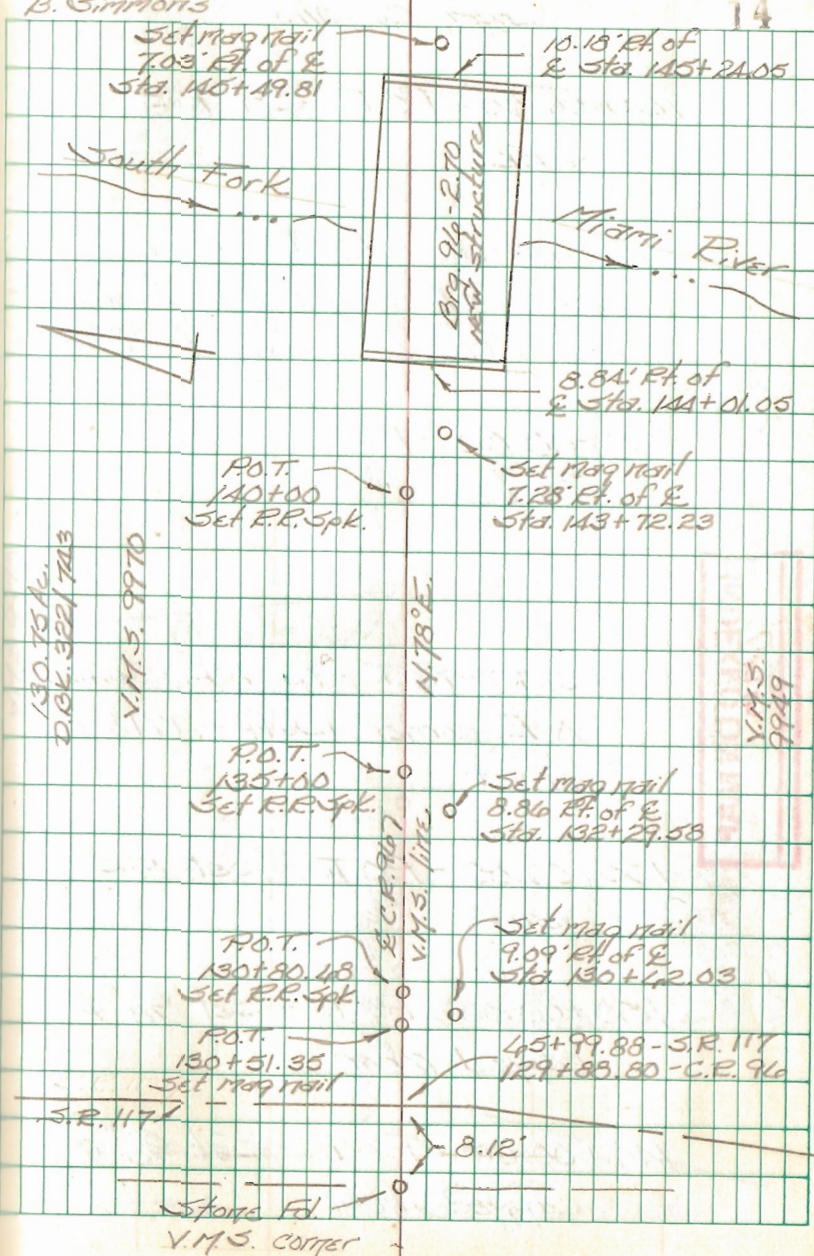
130+51.35 - P.O.T. - set mag
nail

129+88.80 - (straight line mileage
2.56) - Intersection of C.R. 96
w/ of S.R. 117 - nothing found,
nothing set - Beginning of
this survey

C. Nichols
C. Dill
B. Simmons

March 03

14



FB 712

Resurvey Part of C.R. 96
Richland Twp.
Logan Co., Ohio

145+00.00 - P.O.T. - Set R.R.
spike

142+65.62 - P.O.T. - Fd. R.R.
spike - N.E. corner 2.280 Ac. tract -
Ref: 1995 Lee Survey (R-9032)

140+00.00 - P.O.T. - Set R.R.
Spike

157+51.13 - P.O.T. - Fd. R.R. Spike -
N.E. corner Duff's 17 1/2 Ac.
tract

155+00.00 - P.O.T. - Set R.R.
spike

150+00.00 - P.O.T. - Set 5/8" ϕ
capped rebar

146+00.00 - P.O.T. - Set 5/8" ϕ
capped rebar

C. Nichols
C. Dill
B. Simmons
127.07 Ac.

March 03

15

8" dia. steel post -
filled w/ conc.
13.74' Lt. of ϕ
Sta. 143+01.69

P.O.T.
145+00
Set R.R. Spk.

Set 1 1/2" rebar
1.59' Rt. of ϕ
Sta. 143+11.19

Fd. cap'd rebar
0.81' Lt. of ϕ
Sta. 143+01.59

P.O.T.
142+65.62
Fd. R.R. Spk.



51.280 Ac.

P.O.T.
140+00
Set R.R. Spk.

50 Ac.
O.E.V.I. 214/783

Fd. cap'd rebar
0.44' Lt. of ϕ
Sta. 153+30.38

P.O.T.
157+51.13
Fd. R.R. Spk.

P.O.T.
155+00
Set R.R. Spk.

Duff
17 1/2 Ac.
O.E.V.I. 12/142
V.M.S. 9749

P.O.T.
150+00
Set 5/8" ϕ cap'd rebar

P.O.T.
146+00
Set 5/8" ϕ cap'd rebar

130.75 Ac.

INDEXED ON MAP
2/78

FB 712

Resurvey Part of C.R. 96
Richland Twp.
Logan Co., Ohio

180+00.00 - P.O.T. - Set
R.R. spike

175+00.00 - P.O.T. - Set
R.R. spike

170+00.00 - P.O.T. - Set
R.R. spike

165+00.00 - P.O.T. - Set
R.R. spike

C. Nichols
C. Dill
B. Simmons

March 03

16

130.45
Ac.

P.O.T.
180+00
Set R.R. spike

Set map nail
2.19' Pt. of R.
Sta. 180+44.89

Set 1 3/4" iron
4.69' Pt. of R.
Sta. 179+68.12

1.26 Ac.

Brq. 96-3.33

87.50 Ac.
D.R. 240/37

P.O.T.
175+00
Set R.R. spike

Y.M.S. 9970

Y.M.S. 9970
N. 78° E.

Y.M.S. 9949

P.O.T.
170+00
Set R.R. spike

Set 3/4" iron
7.00' Pt. of R.
Sta. 148+19.77

127.07 Ac.

40 Ac.

P.O.T.
165+00
Set R.R. spike

INDEXED ON MAP
678

FB 712

Resurvey Part of C.R. 96
Richland Twp.
Logan Co., Ohio

196+25.80 - Fd. stone w/
monument box - V.M.S. corner -
End of this survey

195+00.00 - P.O.T. - Set R.R.
spike

190+00.00 - P.O.T. - Set R.R.
spike

185+00.00 - P.O.T. - Set R.R.
spike

180+00.00 - P.O.T. - Set R.R.
spike

C. Nichols
C. Dill
B. Simmons

March 03

17

