

(979) IP

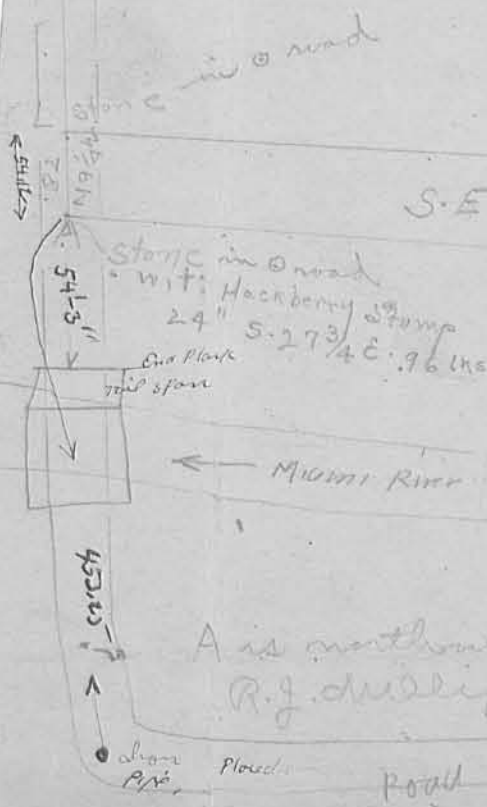
INDEXED ON MAP

Survey for Milligan and Hover

Richland T.P.

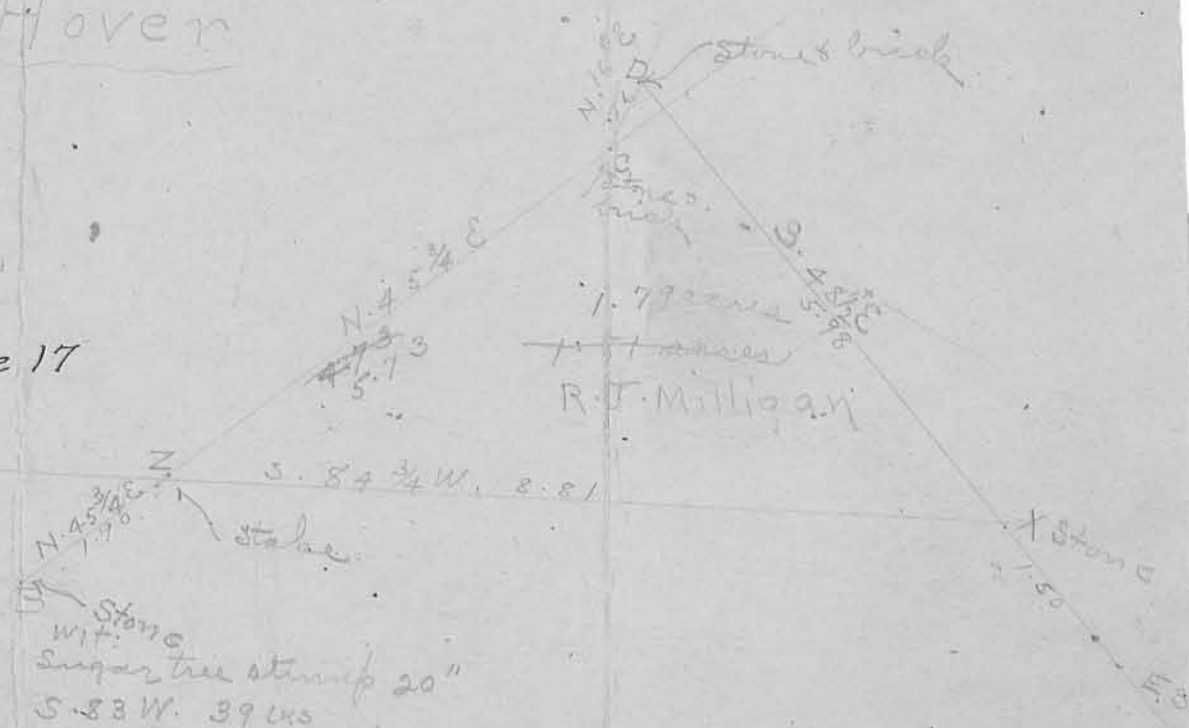
Survey 9950

See Book "D" Page 17



S. 84 $\frac{3}{4}$ W. 15.77
 S. E. HOVER. 1.53 acres
 N. 86 $\frac{1}{2}$ E 14.22

These stones found
 Oct. 1929 see Book 51
 Page 47



O.K. for record

573
 190
 763

A is northwest corner of R. J. Milligan's land.

Pond #105