

O'Connor Survey Survey 9947

Nov 17, 1925

- A stone found
- B stone found
- E Auto Axle Driven
- C point in O Cement Road
- D Iron pin <sup>driven</sup> 2' East of East Edge of Pav.
- E Iron pin driven G' East of East edge pav.
- G Fence Post & stone found.
- H 1/4" Pipe found on line with A & G

(570)

INDEXED ON MAP

See Drawing R

Survey (988)

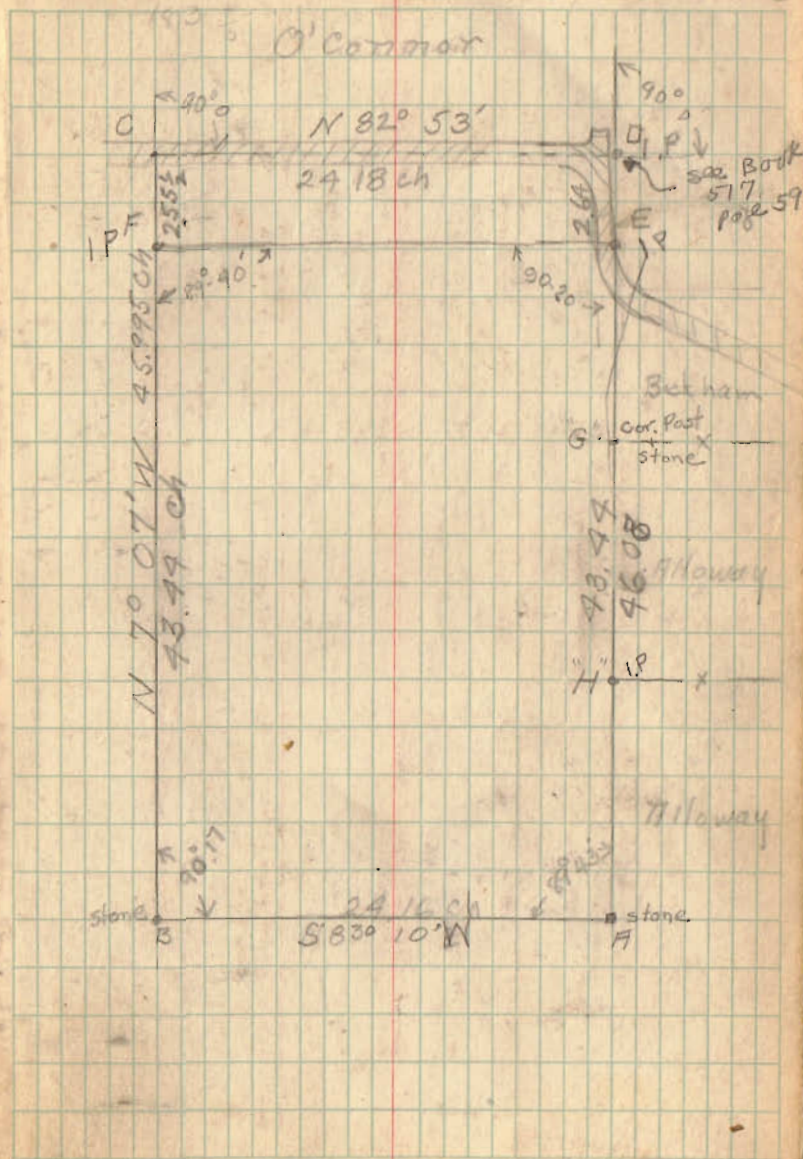
4344

182 20

W.H. Montgomery  
John Herring  
Spangler

12

ch. carriers  
ch carries



N 82° 53 E

24.18

6.28 Acres

24.18  
S 83° 10 W

N E

Iron pin  
2'

Iron pin  
6'

2.55 1/2  
Iron pin

105 Acres

Noah Bickham

43.44 ch.

S 7° 07' E

Geo Alloway

Iron pipe x

Isaac Alloway

45.99 1/2 ch

43.44 ch

N 7° 07' W

stone

24.16 ch

S 83° 10 W

stone

VMS 9947 (988)  
Richland Twp

Surveyed for John O'Connor Nov. 17. 1925

by

W. A. Montgomery. C.E.

2-12-14

# Lee Surveying and Mapping Co., Inc.

APPROVED Land Surveys • Topography • Subdivisions • Construction Layout

117 N. Madriver St.  
Bellefontaine OH 43311



Phone: (937) 593-7335  
Fax: (937) 593-7444  
surveys@lsminc.us

## HURLEY, CO-TRUSTEES 115.466 ACRES

Lying in Virginia Military Survey 9947, Richland Township, Logan County, Ohio.

Being out of the Linda A. Hurley and Thomas W. Hurley, Co-Trustees 103.62 acre tract and all of the 10.60 acre tract, 0.72 acre tract and 0.11 acre tract as deeded and described in Official record 1037, Page 416, Parcel Two, Tracts I, II, III and IV of the Logan County Records of Deeds and being more particularly described as follows:

Beginning on a 5/8 inch iron rod set on the northeast corner of Virginia Military Survey 12742 and the northwest corner of Virginia Military Survey 9927 and on the south line of Virginia Military Survey 9947 and Richland Township and the north line of McArthur Township.

THENCE, with the lines of the W. William Wischmeyer 120.28 acre tract (O.R. 883, Pg. 702), the following three courses:

N 07°-11'-56"W, a distance of 290.07 feet to a 5/8 inch iron rod set.

N 83°-03'-04"E, a distance of 108.90 feet to a 5/8 inch iron rod set.

N 07°-17'-38"W, a distance of 2873.79 feet to a 10 inch wood corner post found, passing a 5/8 inch iron rod set at 2871.79 feet.

THENCE, with the south lines of the Tony R. Morrison 0.50 acre tract and 0.72 acre tract (O.R. 385, Pg. 410, Tract I and Tract II), the Mark Brunson 1.16 acre tract (O.R. 984, Pg. 214) and the Sara J. Tracey 1.54 acre tract (O.R. 607, Pg. 583), N 82°-55'-12"E, a distance of 1204.81 feet to a MAG nail set on the center-line of Ohio Route 366, passing iron rods set at 1.00 feet and 1145.50 feet.

THENCE, with the center-line of Ohio Route 366 (60 feet wide), the following two courses:

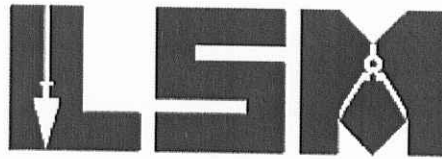
With a curve to the right, having a central angle of 14°-35'-04", a radius of 1146.35 feet, an arc length of 291.80 feet, a chord bearing S 58°-06'-56"E, a distance of 291.01 feet to a MAG nail set on P.C. Station 456 + 11.2 (Plan L-11).

INDEXED ON MAP  
988 2D-1

# Lee Surveying and Mapping Co., Inc.

Land Surveys • Topography • Subdivisions • Construction Layout

117 N. Madriver St.  
Bellefontaine OH 43311



Phone: (937) 593-7335  
Fax: (937) 593-7444  
surveys@lsminc.us

S 50°-49'-24"E, a distance of 345.39 feet to a MAG nail set, passing a MAG nail set on the intersection of the center-line of County Highway 38 (60 feet wide) at 228.90 feet and passing a MAG nail set at 244.76 feet.

THENCE, with the northwesterly line of the Shawn W. Spath 1.165 acre tract (O.R. 1051, Pg. 124), S 38°-48'-08"W, a distance of 96.43 feet to a 5/8 inch iron rod set, passing a 2 inch iron pipe found at 30.00 feet.

THENCE, with the west lines of the said 1.165 acre tract, the Gary L. Bias 7.904 acre tract (O.R. 1112, Pg. 352) and the AJR Farms LLC 16.00 acre tract and 34.737 acre tract (O.R. 1052, Pg. 711, Tract I and Tract X), S 07°-13'-23"E, a distance of 2668.84 feet to a 5/8 inch iron rod found on the south line of Virginia Military Survey 9947, passing a 1 inch iron pipe found at 186.50 feet and a 5/8 inch iron rod found at 899.85 feet.

THENCE, with the south line of Virginia Military Survey 9947 and Richland Township and the north line of the Linda A. Hurley and Thomas W. Hurley, Co-Trustees 113.95 acre tract (O.R. 1037, Pg. 416, Parcel One, Tract I) and McArthur Township, S 83°-05'-03"W, a distance of 1704.91 feet to the point of beginning.

Containing 115.466 acres, of which 0.453 acre is within the highway right-of-way.

Property is subject to any and all previous easements and rights-of-way of record.

The basis for bearings is the south line of Virginia Military Survey 9947, being S 83°-05'-03"W, and all other bearings are from angles and distances measured in a field survey by Lee Surveying and Mapping Co., Inc. on February 10, 2014.



ORIGINAL STAMP IN GREEN

Description prepared by:

William K. Bruce  
Professional Surveyor 7437  
February 10, 2014

56790114

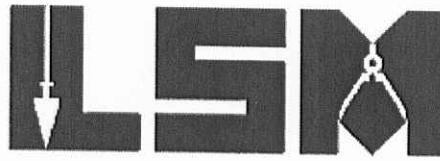
2-12-14

# Lee Surveying and Mapping Co., Inc.



Land Surveys • Topography • Subdivisions • Construction Layout

117 N. Madriver St.  
Bellefontaine OH 43311



Phone: (937) 593-7335  
Fax: (937) 593-7444  
surveys@lsminc.us

## HURLEY, CO-TRUSTEES 0.103 ACRE

Lying in Virginia Military Survey 9947, Richland Township, Logan County, Ohio.

Being out of the Linda A. Hurley and Thomas W. Hurley, Co-Trustees 103.62 acre tract as deeded and described in Official Record 1037, Page 416, Parcel Two, Tract I of the Logan County Records of Deeds and being more particularly described as follows:

Beginning on a MAG nail set on the intersection of the center-lines of Ohio Route 366 and County Highway 38.

THENCE, with the center-line of County Highway 38 (60 feet wide), N 07°-49'-24"W, a distance of 348.35 feet to a point.

THENCE, with the south line of a tract of unknown ownership, N 82°-55'-36"E, a distance of 14.59 feet to a point.

THENCE, with the west line of the W. William Wischmeyer 73.306 acre tract (O.R. 912, Pg. 885), S 07°-13'-23"E, a distance of 359.78 feet to a MAG nail set on the center-line of Ohio Route 366.

THENCE, with the center-line of Ohio Route 366 (60 feet wide), N 50°-49'-24"W, a distance of 15.86 feet to the point of beginning.

Containing 0.103 acre, all of which is within the highway rights-of-way.

Property is subject to any and all previous easements and rights-of-way of record.

The basis for bearings is the south line of Virginia Military Survey 9947, being S 83°-05'-03"W, and all other bearings are from angles and distances measured in a field survey by Lee Surveying and Mapping Co., Inc. on February 10, 2014.

Description prepared by:

*William K. Bruce*

William K. Bruce  
Professional Surveyor 7437  
February 10, 2014

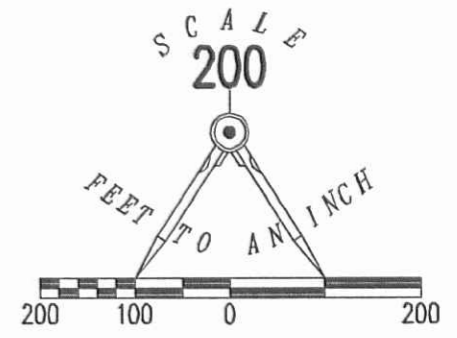
INDEXED ON MAP  
988 2D3



ORIGINAL STAMP IN GREEN

56790114

CURVE	DELTA ANGLE	RADIUS	ARC LENGTH	CHORD BEARING	CHORD LENGTH
C1	14°35'04"	1146.35'	291.80'	S 58°06'56" E	291.01'



**SURVEY OF TWO TRACTS OUT OF THE LINDA A. HURLEY AND THOMAS W. HURLEY, CO-TRUSTEES 103.62 ACRE TRACT, 10.60 ACRE TRACT, 0.72 ACRE TRACT AND 0.11 ACRE TRACT OFFICIAL RECORD 1037, PAGE 416 PARCEL TWO, TRACTS I, II, III AND IV VIRGINIA MILITARY SURVEY 9947 RICHLAND TOWNSHIP LOGAN COUNTY, OHIO**



**ADJOINERS:**

- (A) TONY R. MORRISON  
0.50 ACRE  
O.R. 385, PG. 410  
TRACT I
- (B) TONY R. MORRISON  
0.72 ACRE  
O.R. 385, PG. 410  
TRACT II
- (C) MARK BRUNSON  
1.16 ACRES  
O.R. 984, PG. 214
- (D) SARA J. TRACEY  
1.54 ACRES  
O.R. 607, PG. 583
- (E) SHAWN W. SPATH  
1.165 ACRES  
O.R. 1051, PG. 124

- LEGEND:**
- MAG NAIL SET
  - ⊗ 2 INCH IRON PIPE FOUND
  - ⊙ 1 INCH IRON PIPE FOUND
  - ⊗ 10 INCH WOOD CORNER POST FOUND
  - 5/8 INCH IRON ROD FOUND
  - 5/8 INCH IRON ROD SET WITH PLASTIC I.D. CAP STAMPED "LSM 7437"

**115.466 ACRES**  
OF WHICH 0.453 ACRE IS WITHIN THE HIGHWAY RIGHT-OF-WAY

LINDA A. HURLEY AND THOMAS W. HURLEY, CO-TRUSTEES  
103.62 ACRES  
O.R. 1037, PG. 416  
PARCEL TWO, TRACT I

AJR FARMS LLC  
16.00 ACRES  
O.R. 1052, PG. 711  
TRACT I

AJR FARMS LLC  
34.737 ACRES  
O.R. 1052, PG. 711  
TRACT X

LINDA A. HURLEY AND THOMAS W. HURLEY, CO-TRUSTEES  
113.95 ACRES  
O.R. 1037, PG. 416  
PARCEL ONE, TRACT I

**RICHLAND TOWNSHIP**  
**McARTHUR TOWNSHIP**

V.M.S. 9947  
V.M.S. 12742

V.M.S. 9947  
V.M.S. 9927

EVANS T. SCHEARER AND AUDREY L. SCHEARER, TRUSTEES  
16.87 ACRES  
O.R. 392, PG. 425  
TRACT II

V.M.S. 9927  
V.M.S. 12742

SURVEYED BY:  
*William K. Bruce*  
WILLIAM K. BRUCE  
PROFESSIONAL SURVEYOR 7437  
FEBRUARY 10, 2014



COPYRIGHT 2014 BY:  
**LEE SURVEYING & MAPPING CO**  
117 North Madriver Street., INC.  
BELLEFONTAINE, OHIO 43311  
(937) 593-7335  
WWW.LSMINC.US  
surveys@lsminc.us  
KSS D0114 56790114 L-5679-2

2 WORKING DAYS  
**BEFORE YOU DIG**  
CALL TOLL FREE **800-362-2764**  
OHIO UTILITIES PROTECTION SERVICE

INDEXED ON MAP  
988 ZP