

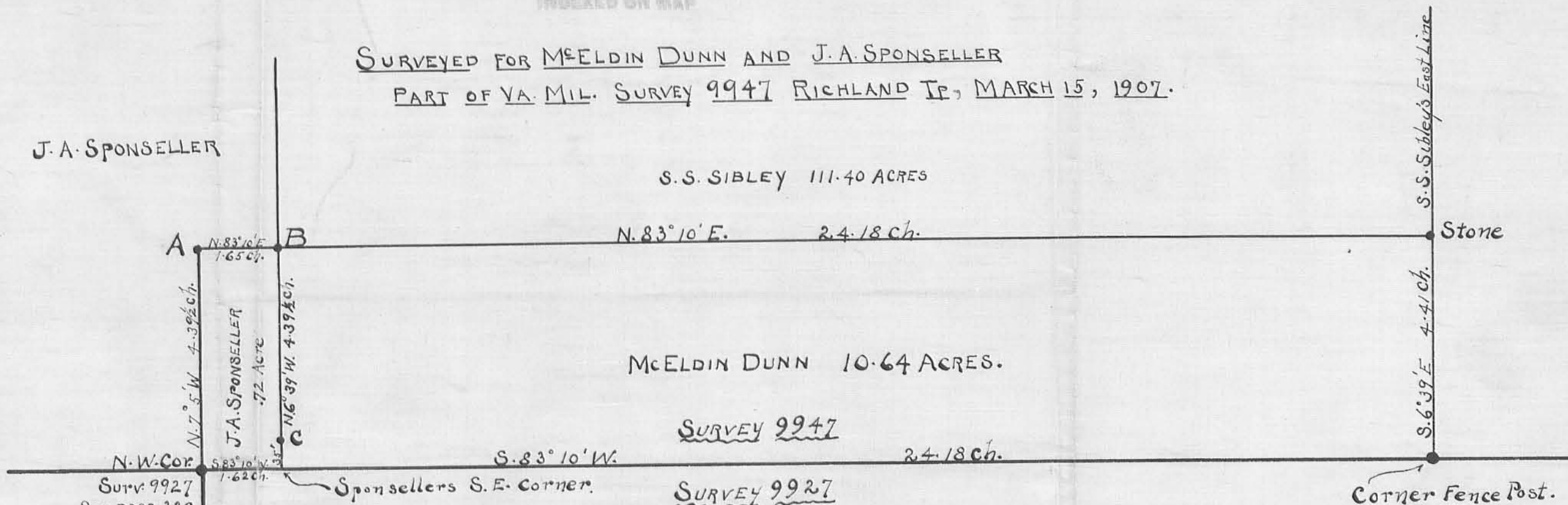
992 IP

INDEXED ON MAP

SURVEYED FOR McELDIN DUNN AND J. A. SPONSELLER  
PART OF VA. MIL. SURVEY 9947 RICHLAND TP, MARCH 15, 1907.

J. A. SPONSELLER

S. S. SIBLEY 111.40 ACRES



McELDIN DUNN 10.64 ACRES.

SURVEY 9947

SURVEY 9927

McELDIN DUNN 258.80 Acres.

Description of Corners:

- A. Stone
- B. Stone on top of Stake
- C. Four boulders on top of Stake 35 feet N. of Survey Line.  
Witness: 15" Walnut S. 69 1/4° E. 20 Feet Distant.

chain-carriers { J.A. Sponseller  
O.C. Richey

SCALE: 1 INCH = 150 FEET.

Charles M. Richey  
County Surveyor