

Walnut St. New Richland  
Richland Turp.

1206

INDEXED ON MAP

Chained South from post on Survey  
line 656.5' to E of Walnut St.  
Set Iron Bar

Dug for stone at N.W. corner  
of Lot #37. found Brick on  
end with several Bricks piled  
around it at a depth of 25 feet.

Dist from Post at S.W. cor. of  
Lot #37 = 66 feet

Dist from Post on N. Survey line  
and E. side of Breton Alley  
681.5'

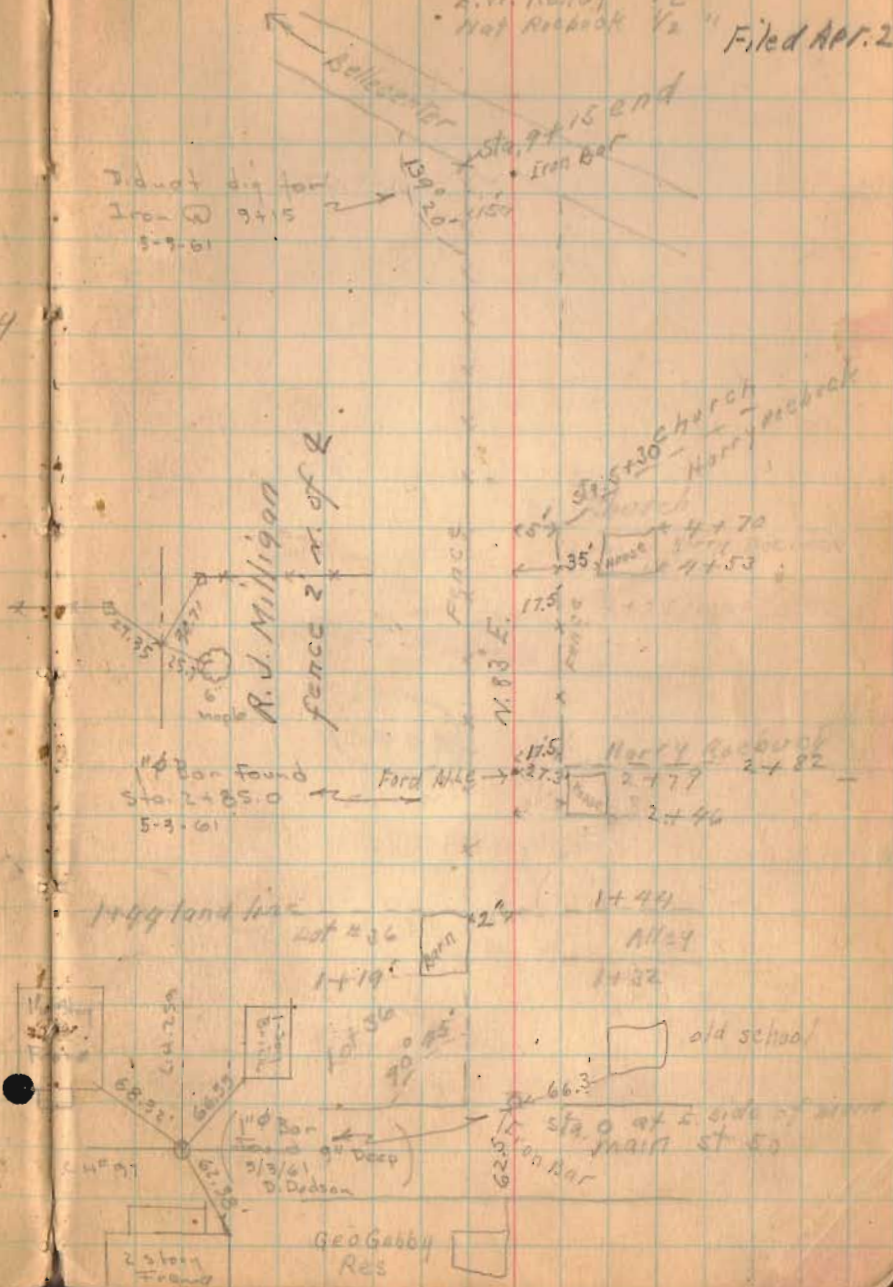
(See Waltz Road Book - 49  
Page 17 1908)

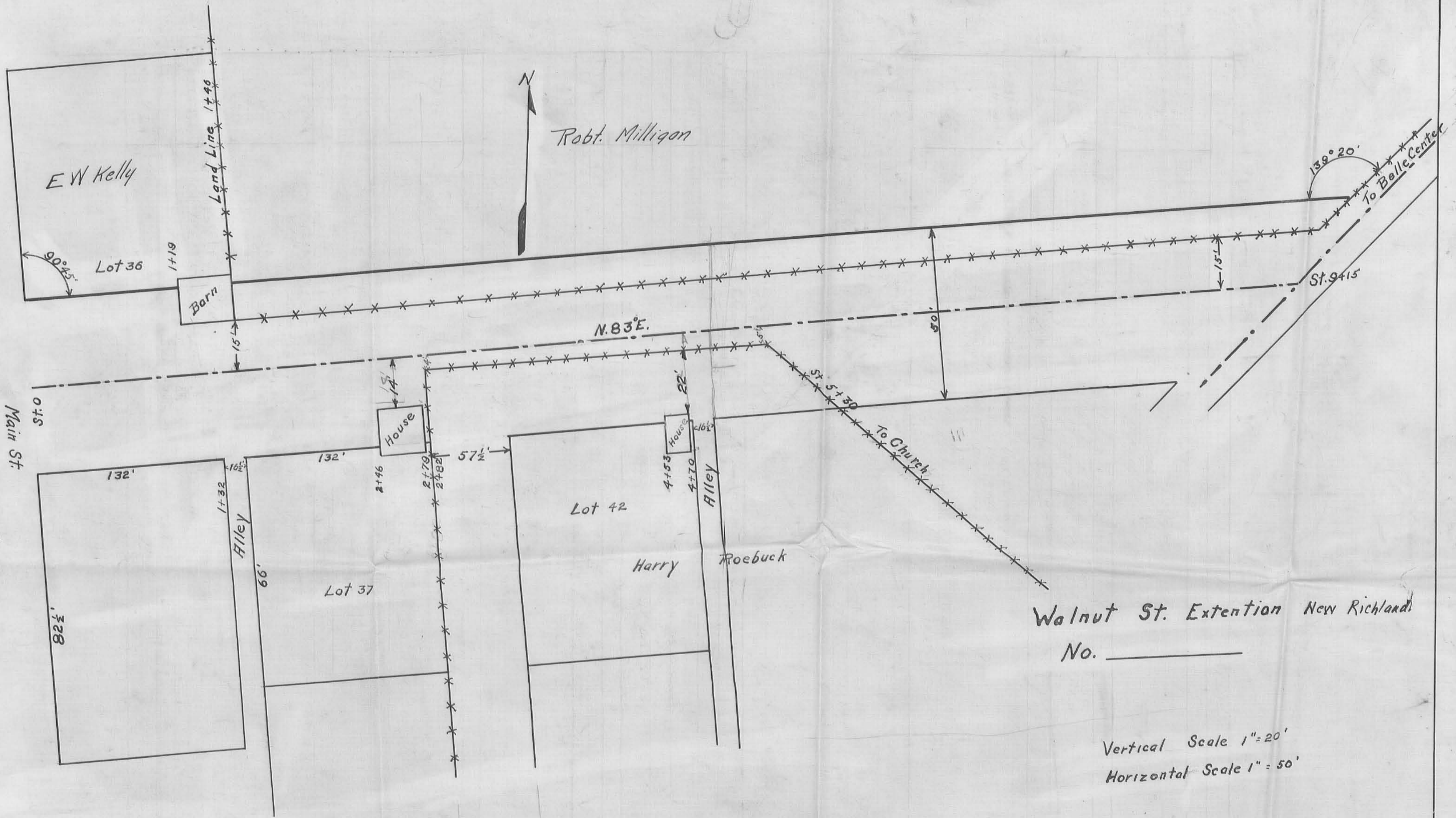
March 31 - 1930

A. M. Renick 1/2 day  
E. W. Kelley 1/2 "  
H. H. Rockbeck 1/2 "

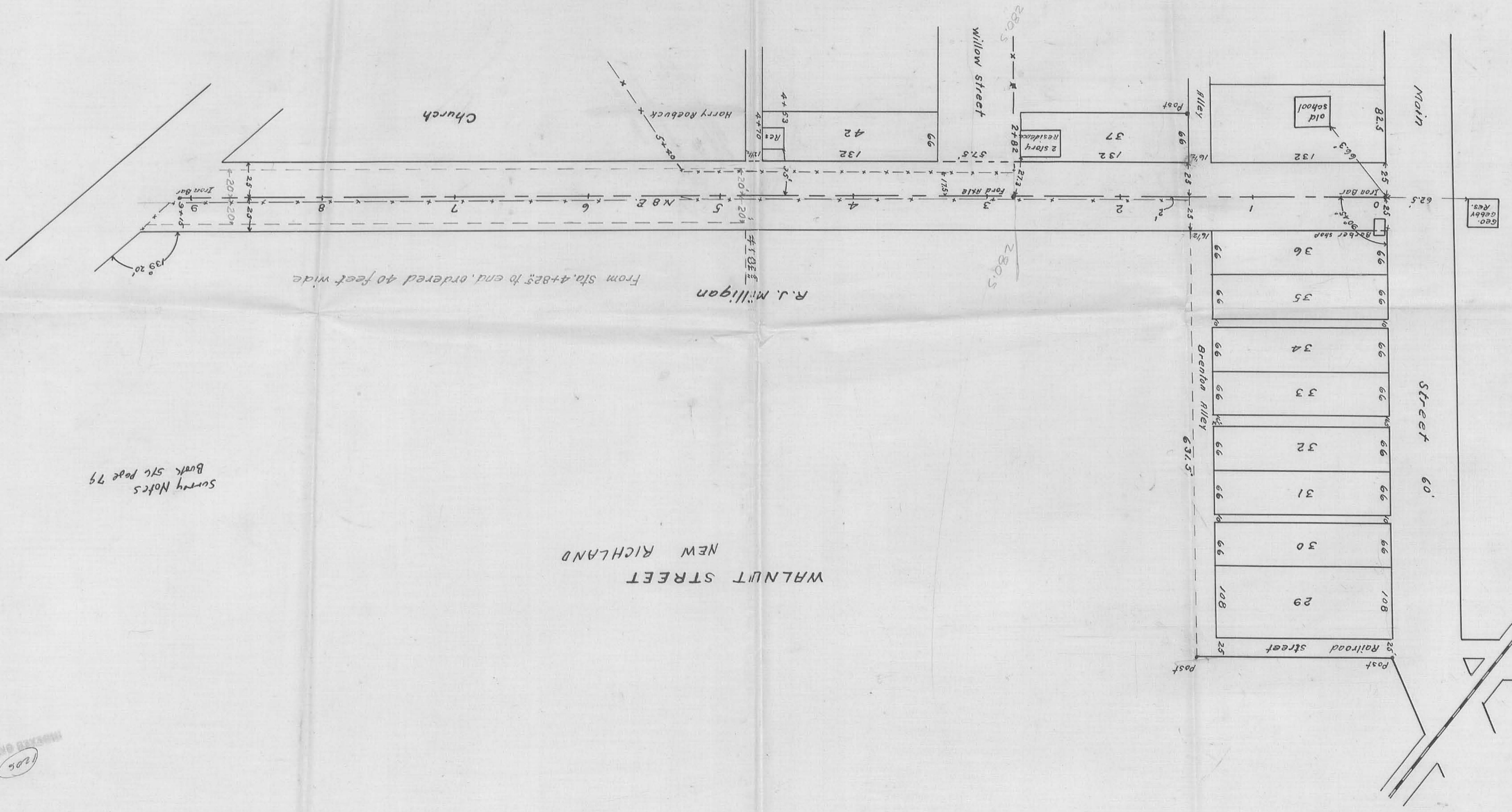
79

Filed Apr. 2





INDEX 1P



Survey Notes  
Book 51c page 79

WALNUT STREET  
NEW RICHMOND

From Sta. 4+82.5 to end, ordered 40 feet wide

R.J. Milligan

CHECKED ON MAP  
1206 2P