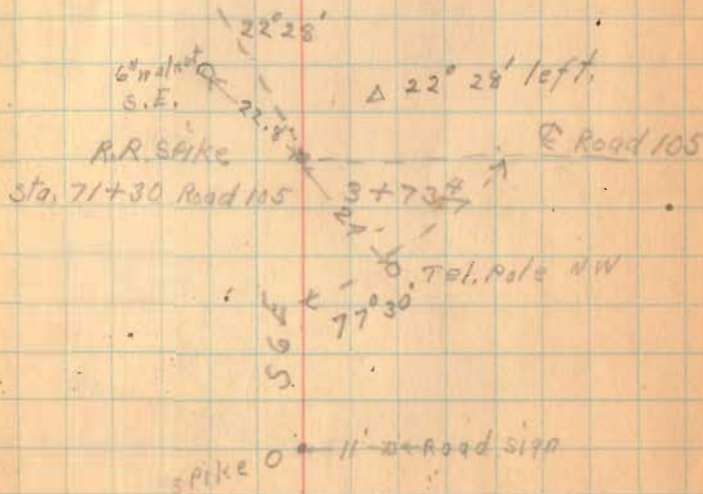
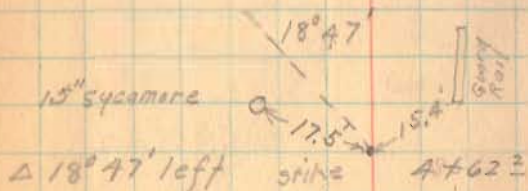
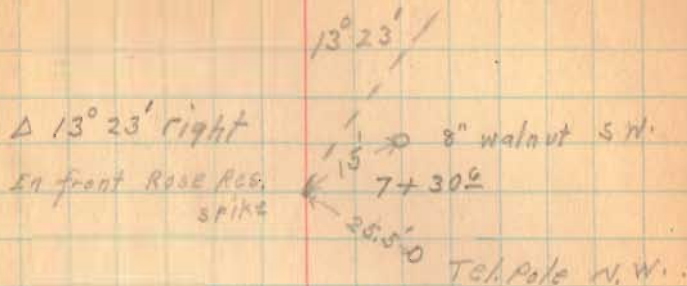


July 30 - 80

J. S. Crane	1/2
Jack Carnes	1/2
Bill Fultz	1/2

Road # 106  
Richland TP.

44



1339  
INDEXED ON MAP

spike → 13+00  
 33.7' 0" Double Angle S.W.  
 57.5'  
 Double Elm. ♂  
 N.W.

35° 25'  
 Tel. Pole  
 N.E.  
 Δ 35° 25' left  
 57.8'  
 spike  
 large corner ♂  
 past N.W.  
 from 11+11<sup>3</sup> continue  
 straight to Northwood  
 11+11<sup>3</sup> Car old  
 school lot

27° 18'  
 Δ 27° 18' left  
 SPIKE  
 13.8' 0" 6" cottonwood  
 10+48<sup>3</sup>  
 23.4' 0" 6" cottonwood

1339  
 INDEXED ON W-43