

Aetna Life Ins. Co.  
 Logan and Hardin County  
 Richland and                      Township's

A. County Line Stone Berea Sandstone

No. 30 Hardin-Logan County Line Book

(P. 24) Page 29

B. Post Apparent Correr of Military Surveys

C. Large Concrete Post.

D. County Line Stone Berea Sandstone

No. 29 Hardin-Logan county line

Book (P. 24) Page 29

E. Large Post

F. Post

G. Stake.

H. Post

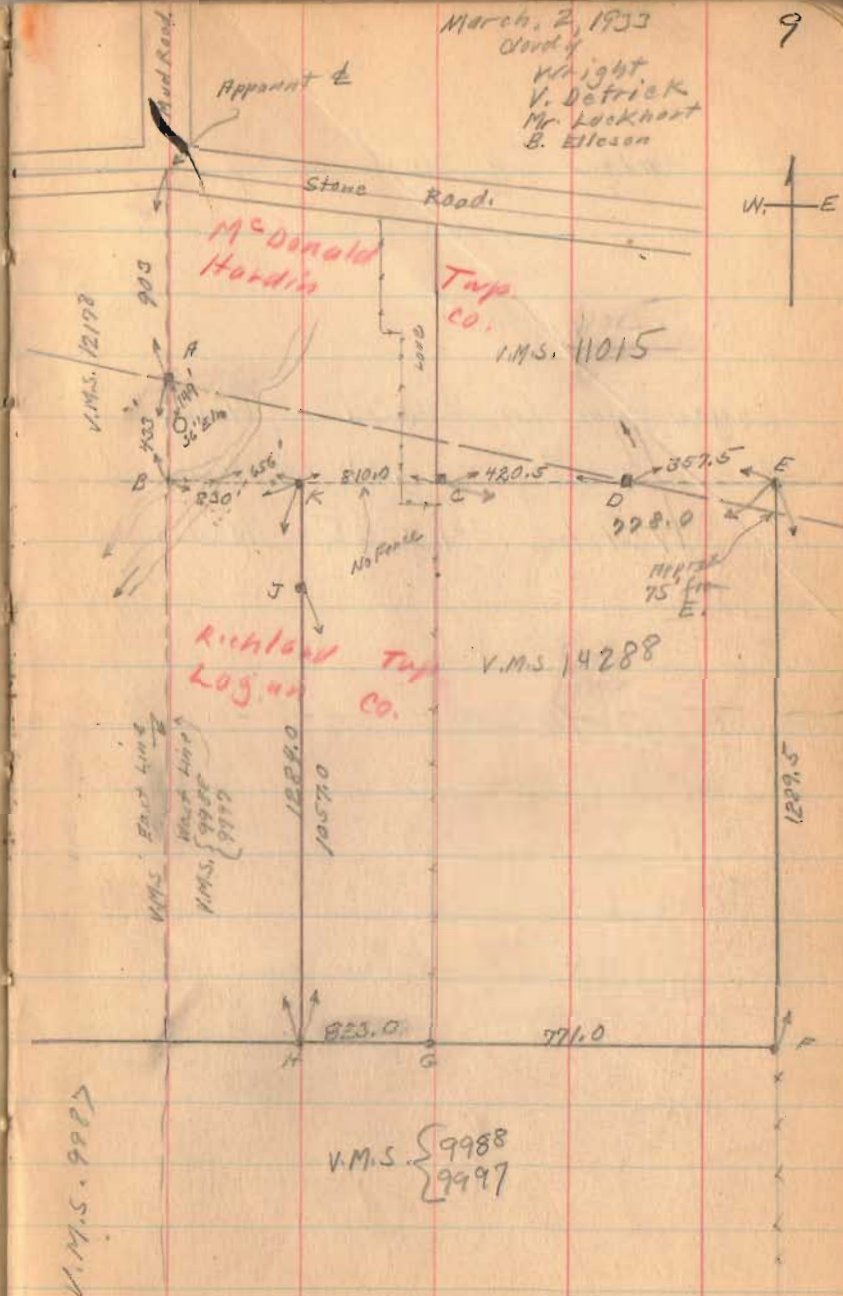
J. Concrete Post on line

K. Post.

1440

INDEXED ON MAP

vol 141-431



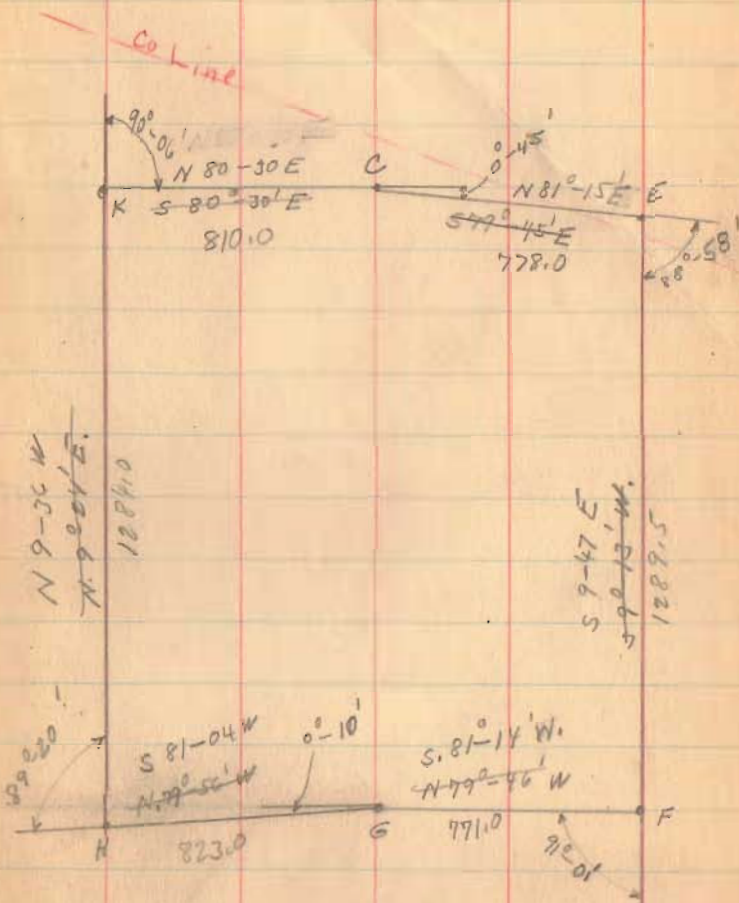
Actna Life Ins Co. Survey (continued)

Logan County = 46.74 Acres  
 Hardin County = 1.31 Acres  
 Total = 48.05 Acres.

Bought By Ellisons

3-2-33

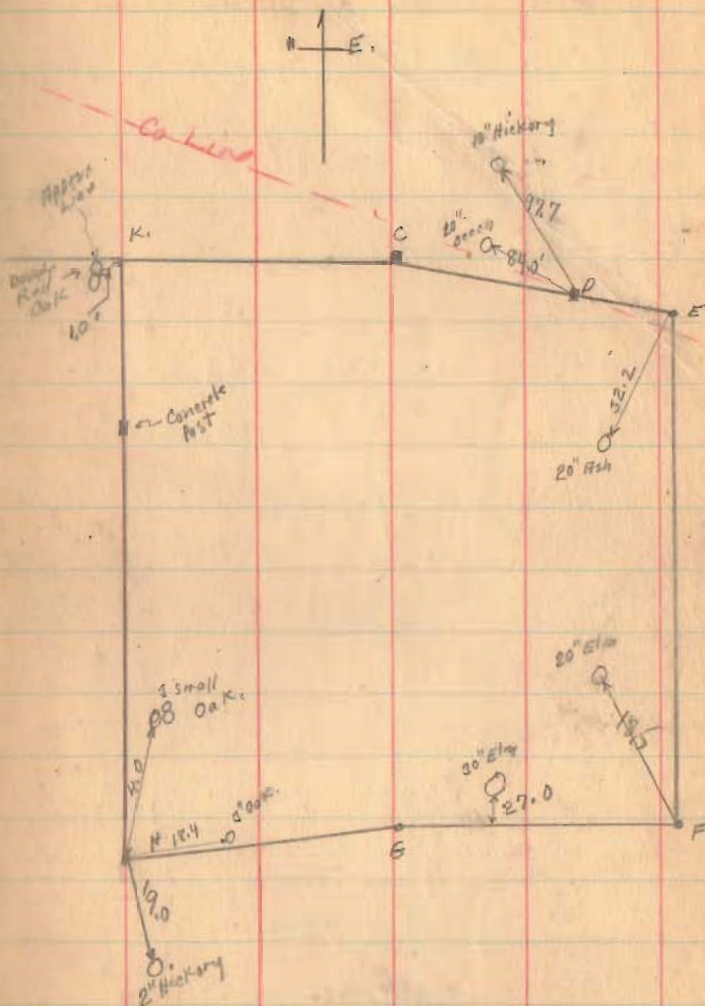
10



Aetna Life Ins Co. Survey

7-2-33

11



1933

Aetna Life Insurance Company Survey.

The following described land situated in McDonald Township, Hardin County and Richland Township, Logan County and being in Virginia Military Survey 14288 .

14288 Beginning at a Berea sand stone in the North line of V.M.S. ~~14288~~ and in the South line of V.M.S. 11015 on the line between Logan and Hardin Counties, said stone being in the South line of Wm. Robb's line, thence N.81 degrees 15' E. with South line of said Robb's land 357.5 feet to a post ~~N.W.~~ corner to E.T. Schearer's land; thence S. 9 degrees 47' E. with said Schearer's West line 1289.5 feet to a post at N.E. corner to J.H. Good's land and being in the ~~South~~ <sup>South</sup> line of V.M.S. 14288, the last described line crossing the county line at about 75.0 feet, thence S. 81 degrees 14' W. with said Good's North line and the ~~South~~ <sup>South</sup> line of said Survey 14288, 771.0 feet to a post and stake, thence continuing with said Good's North line and said survey line S. 81 degrees 04' W. 823.0 feet to a post and stake at Good's N.W. corner and in Ellison's East line; thence N. 9 degrees 36' W. with Ellison's East line 1284.0 feet to a post near a large red oak tree said post being 830.0 feet East of the N.W. corner of V.M.S. 14288 the S.W. corner of V.M.S. 11015, thence N.80 degrees 30' W. 810.0 feet to a large square concrete post at Wm. Robb's S.W. corner; thence N.81 degrees 15' E. with said Robb's South line 420.5 feet to place of beginning, said tract containing a total of 47.05 acres more or less 46.74 acres being in Logan County and 0.31 acres being in Hardin County, this being the same tract as surveyed March 2, 1933 as shown and recorded in Logan County Surveyor's Book No. 570 Pages 9 to 11.

Aetna Life Insurance Company's one-half share of the cost amounts to \$5.00 with purchaser paying the balance.

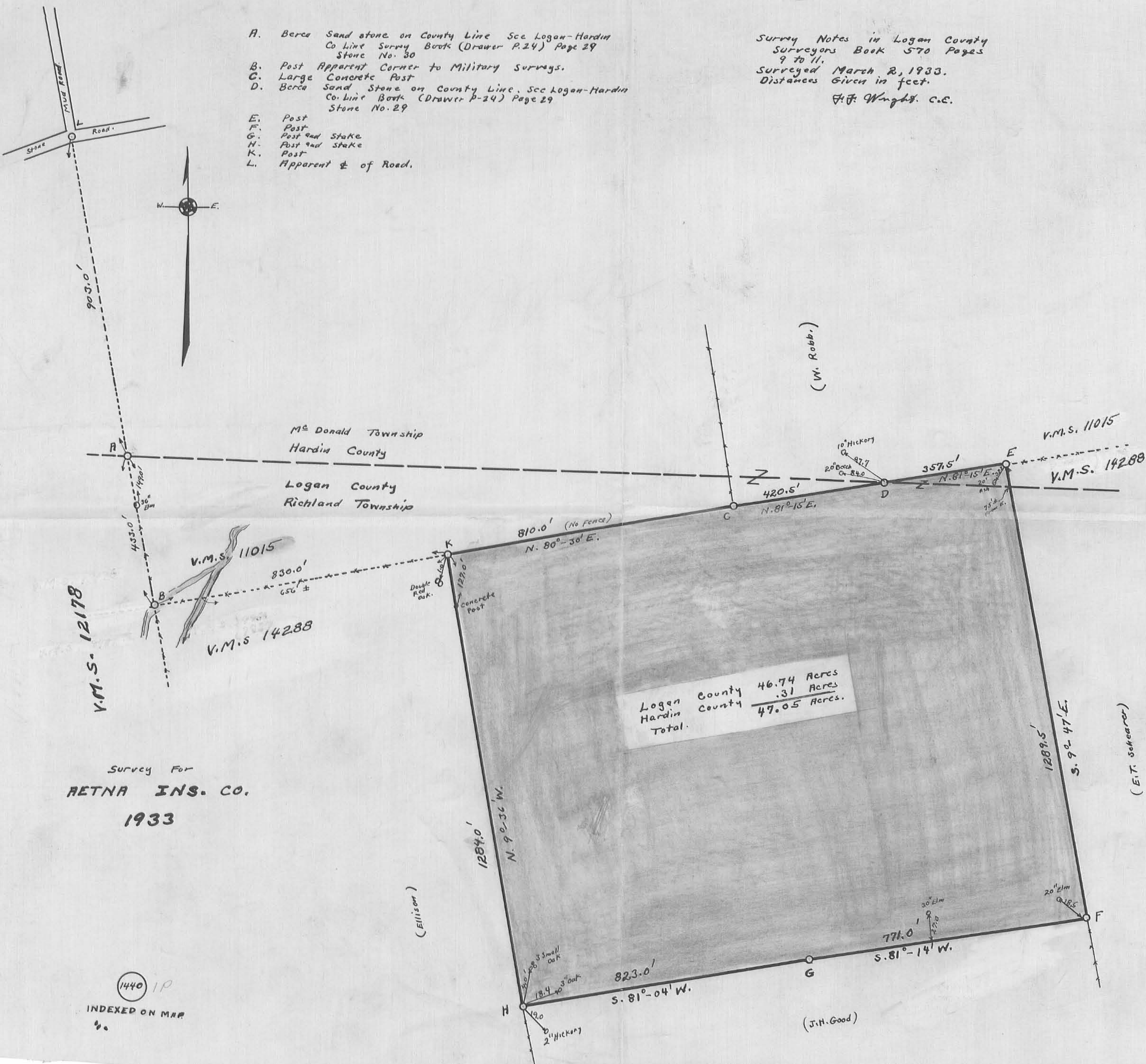
Aetna Insurance Company Survey.

The following described land situated in McDonald Township, Hardin County and Richland Township, Logan County and being in Virginia Military Survey {9988 and 9987.  
9987

Beginning at a Berea sand stone in the North line of V.M.S. 9987-~~9988~~ and in the South line of V.M.S. 14288 on the line between Logan and Hardin Counties, said stone being in the South line of Wm. Robb's land, thence N. 81° 15' E. with South line of said Robb's land 357.5 feet to a post N.E. corner to E.T. Schearer's land; thence S. 9° 47' E. with said Schearer's West line 1289.5 feet to a post at N.E. corner to J.H. Good's land, the last described line crossing the county line at about 75.0 feet, thence S. 81° 14' W. with said Good's North line 771.0 feet to a post and stake, thence continuing with said Good's North line S. 81° 04' W. 823.0 feet to a post and stake at Good's N.W. corner and in Ellison's East line; thence N. 9° 36' W. with Ellison's East line 1284.0 feet to a post near a large red oak tree, thence N. 80° 30' E. 810.0 feet to a large square concrete post at Wm. Robb's S.W. corner; thence N. 81° 15' E. with said Robb's South line 420.5 feet to place of beginning, said tract containing a total of 47.05 acres more or less 46.74 acres being in Logan County and 0.31 acres being in Hardin County, this being the same tract as surveyed March 2, 1933 as shown and recorded in Logan County Surveyor's Book No. 570 Pages 9 to 11.

- A. Berce Sand stone on County Line See Logan-Hardin Co Line Survey Book (Drawer P.24) Page 29 Stone No. 30
- B. Post Apparent Corner to Military Surveys.
- C. Large Concrete Post
- D. Berce Sand Stone on County Line. See Logan-Hardin Co. line Book (Drawer p-24) Page 29 Stone No. 29
- E. Post
- F. Post
- G. Post and Stake
- H. Post and Stake
- K. Post
- L. Apparent  $\frac{1}{2}$  of Road.

Survey Notes in Logan County  
 Surveyors Book 570 Pages  
 9 to 11.  
 Surveyed March 2, 1933.  
 Distances Given in feet.  
 F.F. Wright. C.E.



1440 IP

INDEXED ON MRR

**LESLIE H. GEESLIN**

**REGISTERED SURVEYOR 5248**

**P. O. BOX 274**

**RUSHSVLVANIA, OHIO 43347**

**TELEPHONE: (513) 468-2793**

**SNYDER SURVEY**

August 26, 1996

The following described real estate situated in the State of Ohio, Counties of Logan and Hardin, Townships of Richland and McDonald, being part of Virginia Military Surveys 14288, 9988 and 11015 and more particularly described as follows:

Beginning at a 5/8 inch iron bar set in the centerline of McDonald Township Road 210 at the intersection of said centerline with the east line of Virginia Military Survey 11015, said iron bar also being the northwest corner of Campbellay Farms, Inc.'s 99.67 acre tract as described in Hardin County D. B. Vol. 73 page 340.

Thence with the west line of said 99.67 acre tract and the east line of said V. M. S. 11015 S. 5° 26' 00" E. 1332.79 feet to a 5/8 inch iron bar set at the southeast corner of said V. M. S. 11015 and the northeast corner of V. M. S. 14288, passing a 5/8 inch iron bar set at 20.00 feet.

Thence again with the west line of said 99.67 acre tract, the west line of said Campbellay Farms, Inc.'s 26.48 acre tract as described in Logan County O. R. Vol. 47 Page 978, the west line of said Farms' 34.075 acre tract as described in Logan County O. R. Vol. 47 Page 978 and the east line of said V. M. S. 14288 S. 6° 37' 49" E. 1332.87 feet to a stone found at the southeast corner of V. M. S. 14288, in the north line of V. M. S. 9988 said stone also at a northerly corner of Wayne Detling, etux's 265.876 acre tract as described in Logan County O. R. Vol. 251 page 725.

Thence with said Detling's west line the following three courses:

1. S. 7° 16' 20" E. 329.84 feet to a stone found.
2. S. 80° 49' 52" W. 128.89 feet to a stone found.
3. S. 7° 04' 38" E. 560.32 feet to a 6 inch wood post found

Thence with a northerly line of said 265.876 acre tract and the north line of Gerald Evans' 26 acre tract as described in Logan Co. O. R. Vol. 39 Page 115 and the north line of Wayne Detling, etux's 39.113 acre tract as described in Logan Co. O. R. Vol. 264 Page 601, Tract "A1-1" S. 82° 43' 03" W. 1780.87 feet to a 5/8 inch iron bar set in the remains of a wood post.

Thence with the east line of said Wayne Detling, etux's 58 acre tract (Tract "A-3") and his 47.05 acre tract (Tract "A-4") as both are described in Logan County O. R. Vol. 264 Page 601 N. 7° 28' 41" W. 2253.00 feet to a 5/8 inch iron bar set in the remains of a wood post at the southwest corner of C. F. Yohe and Barb Yohe, Trustees' 23.457 acre tract as described in Hardin Co. D. B. Vol. 152 Page 236, passing into Hardin County at 2180.26 feet

RI A:\15\SNYDER.SAM, RI A:\18\SNYDER.SAM HA A:\MCDONALD\SNIDER.SAM



Thence with said Yohe's south line and the south line of Dorothy Cunningham's 18.51 acre tract as described in Hardin Co. D. B. Vol.. 94 page 126 N. 83° 28' 00" E. 1283.03 feet to a stone found.

Thence with said Cunningham's east line N. 5° 30' 00" W. 1331.91 feet to a 5/8 inch iron bar set over stone with brick found in the centerline of said *McDONALD* Twp. Road 210 passing a 5/8 inch iron bar set at 1311.91 feet.

Thence with the centerline of said *McDONALD* Twp. Road 210 N. 83° 23' 32" E. 653.32 feet to the place of beginning.

Containing 117.033 acres more or less of which 31.890 acres are in Hardin County (19.955 acre in V. M. S. 11015 and 11.935 acre in V. M. S. 14288) and 85.143 acres are in Logan County (48.891 acres in V. M. S. 14288 and 36.252 acres in V. M. S. 9988).

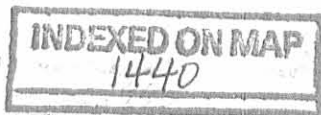
The above described 117.033 acre tract being all [0.525 acre] of Lester L. Snyder, etux's 0.75 acre tract (Pt. Tract 1), all [19.430 acres] of his 19 acre tract, (Tract 2), all [47.976 acre of which 11.935 acre is in Hardin County and 36.041 acre is in Logan County] of his 47.31 acre tract (Pt. Tract 2), all [26.377 acre] of his 23.68 acre tract (Pt Tract 2), all [0.976 acre] of his 0.985 acre tract (Pt. Tract 2) and all [21.749 acres] of his 23.68 acre tract (Pt Tract 2) as all are described in Logan County D. B. Vol. 396 Page 529 and Hardin County D. B. Vol. 89 Page 344.

Bearings are based on an assumed bearing (N. 5° 30' 00" W.) for the east line of Dorothy Cunningham's 18.51 acre tract as described in D. B. vol.. 94 page 126 in this field survey by Leslie H. Geeslin, Reg. Surveyor 5248 on August 26, 1996.

REVISED 1/19/09



RI A:\15\SNYDER.SAM, RI A:\18\SNYDER.SAM HA A:\MCDONALD\SNIDER.SAM



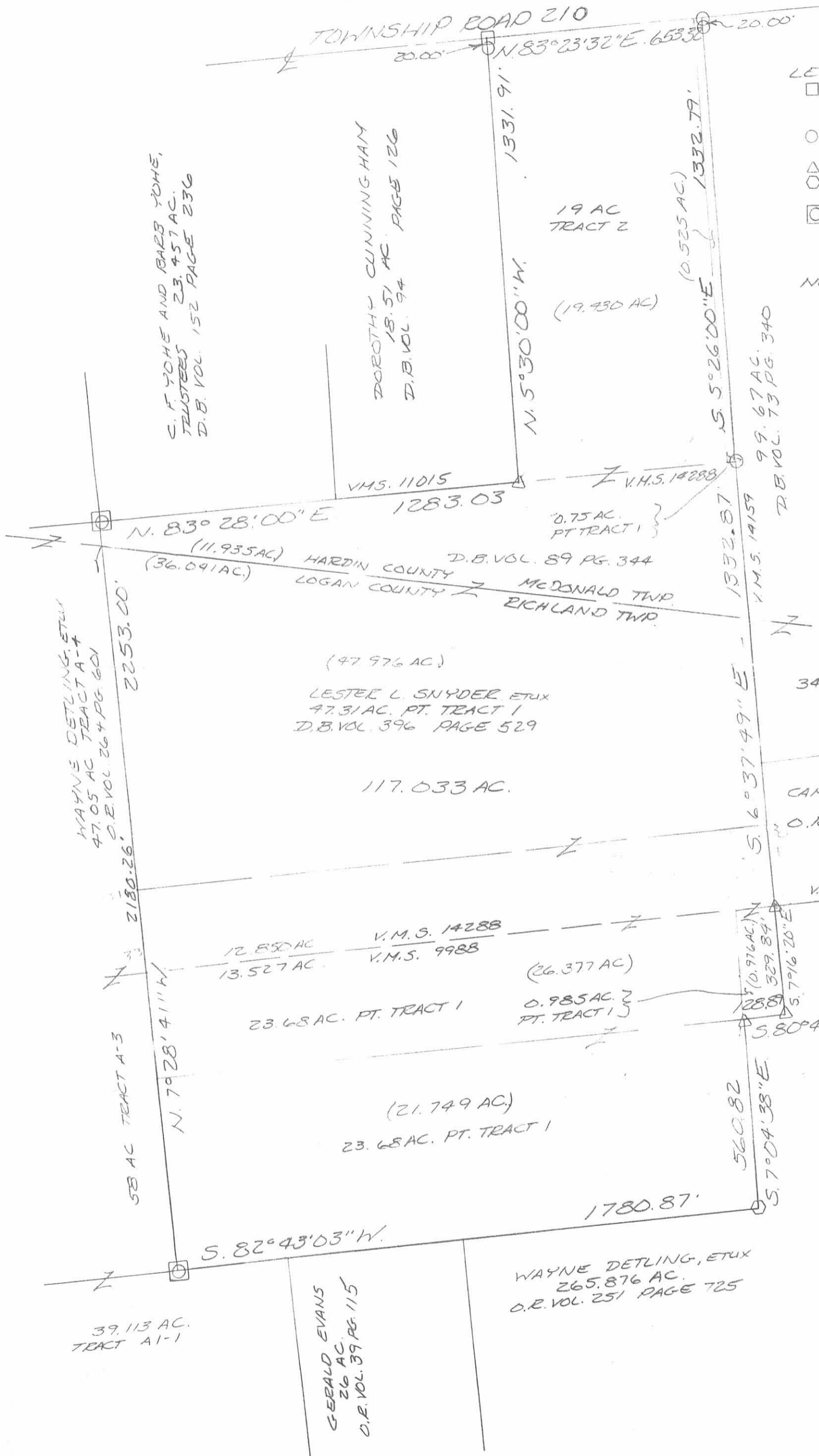
2D-2

*Leslie H. Geeslin*



SURVEY OF 117.033 ACRES IN VIRGINIA MILITARY SURVEYS 14288, 9988 AND 11015, LOGAN COUNTY, RICHLAND TOWNSHIP, AND HARDIN COUNTY, McDONALD TOWNSHIP FOR LESTER SNYDER ON AUGUST 26, 1906

SCALE 1" = 300'



2P  
 INDEXED ON MAP  
 1440



Leslie H. Geeslin  
 LESLIE H. GEESLIN  
 PROFESSIONAL SURVEYOR



**DESCRIPTION OF SURVEY FOR  
JUDITH SNYDER  
TRACT 1  
13.508 ACRES  
JULY 5, 2024**

The following described 13.508 acre tract of land is situated in Virginia Military Surveys 11015, 14288 and 9988-9997, Richland Township, Logan County and McDonald Township, Hardin County, Ohio and being part of Judith Snyder's Exhibit "A" (114.77 acres) described in Logan County Official Record Volume 1293, page 127 and in Hardin County Official Record Volume 549, page 4215, said 13.508 acre tract of land more particularly described as follows:

Beginning for reference at a 6 inch magspike set over a stone found in the centerline of McDonald Township Road 210 (right-of-way width unknown, 40 to 49 feet occupied width), in the east line of V.M.S. 11015, in the west line of V.M.S. 14159, at the northeast corner of said 114.77 acre tract and at the northwest corner of James G. Reed, Trustee's 148.390 acre (Tract I) described in Logan County Official Record Volume 1411, page 3930 and in Hardin County Official Record Volume 566, page 4269;

Thence South  $84^{\circ}08'06''$  West 622.73 feet, departing from the west line of V.M.S. 14159 and the northwest corner of said 148.390 acre tract, entering V.M.S. 11015, following the centerline of McDonald Township Road 210 and the north line of said 114.77 acre tract, to a 6 inch magspike set and marking the **place of beginning**;

Thence **South  $04^{\circ}34'30''$  East 1358.36 feet**, departing from the centerline of McDonald Township Road 210, entering said 114.77 acre tract, passing an iron bar set at 20.01 feet, leaving V.M.S 11015 and entering V.M.S 14288, to an iron bar set;

Thence **South  $84^{\circ}02'10''$  West 954.75 feet** to an iron bar set;



Thence **South 06°53'22" East 1445.62 feet**, leaving Hardin County and entering Logan County at a distance of 110.36 feet, leaving V.M.S 14288 and entering V.M.S. 9988-9997, to an iron bar set;

Thence **South 84°02'10" West 352.36 feet**, to an iron bar set in the west line of said 114.77 acre tract and in the east line of PEWAMO LTD's Exhibit "A" Tract 2 (261.074 acres) described in Logan County Official Record Volume 1225, page 579 and in Hardin County Official Record Volume 537, page 1903;

Thence **North 06°53'22" West 1475.62 feet**, following the west line of said 114.77 acre tract and the east line of said 261.074 acre tract, leaving V.M.S. 9988-9997, entering V.M.S. 14288, leaving Logan County and entering Hardin County at a distance of 1404.93 feet, to a 5/8 inch iron bar found in the north line of V.M.S 14288, in the south line of V.M.S. 11015 and in the south line of Heartlight Properties LLC's 23.453 acre tract described in Hardin County Official Record Volume 549, page 1695;

Thence **North 84°02'10" East 1278.31 feet**, following a north line of said 114.77 acre tract, the south line of said 23.453 acre tract, the north line of V.M.S. 14288, the south line of V.M.S. 11015, passing a 5/8 inch iron bar found (at a distance of 684.09 feet) at the southeast corner of said 23.453 acre tract and at the southwest corner of Ethan Tanner Price's 18.51 acre tract described in Hardin County Official Record Volume 568, page 2762, continuing with the south line of said 18.51 acre tract, thereafter to a stone found at the southeast corner of said 18.51 acre tract and at a corner to said 114.77 acre tract;

Thence **North 04°34'30" West 1328.41 feet**, departing from the north line of V.M.S. 14288 and entering V.M.S. 11015, following the west line of said 114.77 acre tract and the east line of said 18.51 acre tract, passing a 5/8 inch iron bar found at 1308.40 feet, to a 5/8 inch iron bar found over a stone in the centerline of McDonald Township Road 210, at the northwest corner of said 114.77 acre tract and at the northeast corner of said 18.51 acre tract;

INDEXED ON MAP  
1440

Thence North 84°08'06" East 30.01 feet, departing from the northeast corner of said 18.51 acre tract, following the north line of said 114.77 acre tract and the centerline of McDonald Township Road 210, to the **place of beginning, containing 13.508 acres** more or less and subject to all valid easements and restrictions of record.

Of the above described 13.508 acre tract of land, 2.427 acres are within Hardin County (0.915 acres within V.M.S. 11015 and 1.512 acres within V.M.S. 14288) and 11.081 acres are within Logan County (9.828 acres within V.M.S. 14288 and 1.253 acres within V.M.S. 9988-9997).

The above description was prepared from an actual field survey made by Blackburn Surveying, LLC, George A. Blackburn, Registered Surveyor # 7873, during the month of July 2024. Iron bars set are 5/8 inch by 30 inch reinforcing rods with plastic caps marked "Blackburn RS # 7873". Bearings indicated herein are based on the centerline of McDonald Township Road 210 having a bearing of South 84°08'06" West.

Description prepared by: *George A. Blackburn* 7-5-2024  
George A. Blackburn, RS # 7873  
6879 State Route 287  
West Liberty, Ohio 43357  
(937) 465-0424





**DESCRIPTION OF SURVEY FOR  
JUDITH SNYDER  
TRACT 2  
43.382 ACRES  
JULY 5, 2024**

The following described 43.382 acre tract of land is situated in Virginia Military Surveys 11015, 14288 and 9988-9997, Richland Township, Logan County and McDonald Township, Hardin County, Ohio and being part of Judith Snyder's Exhibit "A" (114.77 acres) described in Logan County Official Record Volume 1293, page 127 and in Hardin County Official Record Volume 549, page 4215, said 43.382 acre tract of land more particularly described as follows:

Beginning for reference at a 6 inch magspike set over a stone found in the centerline of McDonald Township Road 210 (right-of-way width unknown, 40 to 49 feet occupied width), in the east line of V.M.S. 11015, in the west line of V.M.S. 14159, at the northeast corner of said 114.77 acre tract and at the northwest corner of James G. Reed, Trustee's 148.390 acre (Tract I) described in Logan County Official Record Volume 1411, page 3930 and in Hardin County Official Record Volume 566, page 4269;

Thence South  $84^{\circ}08'06''$  West 359.45 feet, departing from the west line of V.M.S. 14159 and the northwest corner of said 148.390 acre tract, entering V.M.S. 11015, following the centerline of McDonald Township Road 210 and the north line of said 114.77 acre tract, to a 6 inch magspike set and marking the **place of beginning**;

Thence **South  $04^{\circ}34'30''$  East 1545.12 feet**, departing from the centerline of McDonald Township Road 210, entering said 114.77 acre tract, passing an iron bar set at 20.01 feet, leaving V.M.S 11015 and entering V.M.S 14288, to an iron bar set;

Thence **South  $84^{\circ}02'10''$  West 688.17 feet** to an iron bar set;



Thence **South 06°53'22" East 1994.61 feet**, leaving Hardin County and entering Logan County at a distance of 26.45 feet, leaving V.M.S 14288 and entering V.M.S. 9988-9997, to an iron bar set in the south line of said 114.77 acre tract and in the north line of Gene Evans' Exhibit "A" (25.664 acres) described in Logan County Official Record Volume 727, pages 556-557;

Thence **South 83°26'28" West 874.56 feet**, following the south line of said 114.77 acre tract, the north line of said 25.664 acre tract, passing the northwest corner of said 25.664 acre tract and the northeast corner of PEWAMO LTD's Exhibit "A" Tract 2 (261.074 acres) described in Logan County Official Record Volume 1225, page 579, continuing with the north line of said 261.074 acre tract, thereafter to a 5/8 inch iron bar found at the southwest corner of said 114.77 acre tract and at a corner to said 261.074 acre tract;

Thence **North 06°53'22" West 745.26 feet**, following the west line of said 114.77 acre tract and the east line of said 261.074 acre tract, to an iron bar set;

Thence **North 84°02'10" East 352.36 feet**, departing from the east line of said 261.074 acre tract and entering said 114.77 acre tract to an iron bar set;

Thence **North 06°53'22" West 1445.62 feet**, leaving V.M.S. 9988-9997 and entering V.M.S. 14288, leaving Logan County and entering Hardin County at a distance of 1335.26 feet, to an iron bar set;

Thence **North 84°02'10" East 954.75 feet** to an iron bar set;

Thence **North 04°34'30" West 1358.36 feet**, leaving V.M.S. 14288 and entering V.M.S. 11015, passing an iron bar set at a distance of 1338.35 feet, to a 6 inch magspike set in the centerline of McDonald Township Road 210 and in the north line of said 114.77 acre tract;

INDEXED ON MAP

1440

Thence North 84°08'06" East 263.28 feet, following the centerline of McDonald Township Road 210 and the north line of said 114.77 acre tract, to the place of beginning, containing 43.382 acres more or less and subject to all valid easements and restrictions of record.

Of the above described 43.382 acre tract of land, 13.122 acres are within Hardin County (8.022 acres within V.M.S. 11015 and 5.100 acres within V.M.S. 14288) and 30.260 acres are within Logan County (13.486 acres within V.M.S. 14288 and 16.774 acres within V.M.S. 9988-9997).

The above description was prepared from an actual field survey made by Blackburn Surveying, LLC, George A. Blackburn, Registered Surveyor # 7873, during the month of July 2024. Iron bars set are 5/8 inch by 30 inch reinforcing rods with plastic caps marked "Blackburn RS # 7873". Bearings indicated herein are based on the centerline of McDonald Township Road 210 having a bearing of South 84°08'06" West.

Description prepared by: *George A. Blackburn* 7-5-2024  
George A. Blackburn, RS # 7873  
6879 State Route 287  
West Liberty, Ohio 43357  
(937) 465-0424



INDEXED ON MAP  
1440

7-23-2024  
 **APPROVED**

**DESCRIPTION OF SURVEY FOR  
JUDITH SNYDER  
TRACT 3  
43.382 ACRES  
JULY 5, 2024**

The following described 43.382 acre tract of land is situated in Virginia Military Surveys 11015, 14288 and 9988-9997, Richland Township, Logan County and McDonald Township, Hardin County, Ohio and being part of Judith Snyder's Exhibit "A" (114.77 acres) described in Logan County Official Record Volume 1293, page 127 and in Hardin County Official Record Volume 549, page 4215, said 43.382 acre tract of land more particularly described as follows:

Beginning for reference at a 6 inch magspike set over a stone found in the centerline of McDonald Township Road 210 (right-of-way width unknown, 40 to 49 feet occupied width), in the east line of V.M.S. 11015, in the west line of V.M.S. 14159, at the northeast corner of said 114.77 acre tract and at the northwest corner of James G. Reed, Trustee's 148.390 acre (Tract 1) described Logan County Official Record Volume 1411, page 3930 and in Hardin County Official Record Volume 566, page 4269;

Thence South 84°08'06" West 54.18 feet, departing from the west line of V.M.S. 14159 and the northeast corner of said 148.390 acre tract, entering V.M.S. 11015, following the centerline of McDonald Township Road 210 and the north line of said 114.77 acre tract, to a 6 inch magspike set at the northwest corner of Lester L. III and Stephanie Snyder's 2.263 acre tract described in Hardin County Official Record Volume 513, page 2477, said magspike marking the **place of beginning**;

Thence **South 04°42'38" East 380.91 feet**, departing from the centerline of McDonald Township Road 210, following an east line of said 114.77 acre tract and the west line of said 2.263 acre tract, passing a 5/8 inch iron bar found at 19.55

INDEXED ON MAP  
1440



feet, to a 5/8 inch iron bar found at a corner to said 114.77 acre tract and at a northeast corner of said 2.263 acre tract;

Thence **South 85°16'42" West 220.15 feet**, following a south line of said 114.77 acre tract and the north line of said 2.263 acre tract, to a 5/8 inch iron bar found at a corner to said 114.77 acre tract and at a northwest corner of said 2.263 acre tract;

Thence **South 04°43'02" East 348.44 feet**, following an east line of said 114.77 acre tract and the west line of said 2.263 acre tract, to a 5/8 inch iron bar found at a corner to said 114.77 acre tract and at a southwest corner of said 2.263 acre tract;

Thence **North 85°15'46" East 250.05 feet**, following a north line of said 114.77 acre tract and the south line of said 2.263 acre tract, to a 5/8 inch iron bar found at a corner to said 114.77 acre tract and at a southeast corner of said 2.263 acre tract;

Thence **South 04°47'29" East 602.37 feet**, departing from the southeast corner of said 2.263 acre tract, entering said 114.77 acre tract, leaving V.M.S. 11015 and entering V.M.S. 14288, to an iron bar set;

Thence **South 84°29'32" West 107.36 feet** to an iron bar set;

Thence **South 06°06'38" East 427.80 feet**, leaving Hardin County and entering Logan County at a distance of 421.89 feet, to an iron bar set;

Thence **South 84°02'10" West 316.04 feet** to an iron bar set;

Thence **South 06°07'42" East 1044.63 feet**, leaving V.M.S. 14288 and entering V.M.S. 9988-9997, to an iron bar set;

Thence **North 83°52'18" East 320.54 feet** to an iron bar set;



Thence **South 06°17'54" East 726.43 feet**, passing a stone found at a distance of 165.06 feet at a corner to said 114.77 acre tract and at a corner to PEWAMO LTD's Exhibit "A" Tract 1 (227.547 acres) described in Logan County Official Record Volume 1225, page 579, continuing with the east line said 114.77 acre tract and a west line of said 227.547 acre tract, thereafter to a 10 inch square wood post found at the southeast corner of said 114.77 acre tract and at a northwest corner to said 227.547 acre tract;

Thence **South 83°26'28" West 905.86 feet**, following the south line of said 114.77 acre tract, the north line of said 227.547 acre tract and the north line of Gene Evans' Exhibit "A" (25.664 acres) described in Logan County Official Record Volume 727, pages 556-557, to an iron bar set;

Thence **North 06°53'22" West 1994.61 feet**, departing from the north line of said 25.664 acre tract and entering said 114.77 acre tract, leaving V.M.S. 9988-9997 and entering V.M.S. 14288, leaving Logan County and entering Hardin County at a distance of 1968.16 feet, to an iron bar set;

Thence **North 84°02'10" East 688.17 feet** to an iron bar set;

Thence **North 04°34'30" West 1545.12 feet**, leaving V.M.S. 14288 and entering V.M.S. 11015, passing an iron bar set at a distance of 1525.11 feet, to a 6 inch magspike set in the centerline of McDonald Township Road 210 and in the north line of said 114.77 acre tract;

Thence **North 84°08'06" East 305.27 feet**, following the centerline of McDonald Township Road 210 and the north line of said 114.77 acre tract to the **place of beginning, containing 43.382 acres** more or less and subject to all valid easements and restrictions of record.

Of the above described 43.382 acre tract of land, 11.686 acres are within Hardin County (7.994 acres within V.M.S. 11015 and 3.692 acres within V.M.S.



14288) and 31.696 acres are within Logan County (14.198 acres within V.M.S. 14288 and 17.498 acres within V.M.S. 9988-9997).

The above description was prepared from an actual field survey made by Blackburn Surveying, LLC, George A. Blackburn, Registered Surveyor # 7873, during the month of July 2024. Iron bars set are 5/8 inch by 30 inch reinforcing rods with plastic caps marked "Blackburn RS # 7873". Bearings indicated herein are based on the centerline of McDonald Township Road 210 having a bearing of South 84°08'06" West.

Description prepared by: *George A. Blackburn* *7-5-2024*

George A. Blackburn, RS # 7873  
6879 State Route 287  
West Liberty, Ohio 43357  
(937) 465-0424



INDEXED ON MAP  
1440

7-23-2024



**APPROVED**

**DESCRIPTION OF SURVEY FOR  
JUDITH SNYDER  
TRACT 4  
13.265 ACRES  
JULY 5, 2024**

The following described 13.265 acre tract of land is situated in Virginia Military Surveys 11015, 14288 and 9988-9997, Richland Township, Logan County and McDonald Township, Hardin County, Ohio and being part of Judith Snyder's Exhibit "A" (114.77 acres) described in Logan County Official Record Volume 1293, page 127 and in Hardin County Official Record Volume 549, page 4215, said 13.265 acre tract of land more particularly described as follows:

Beginning at a 6 inch magspike set over a stone found in the centerline of McDonald Township Road 210 (right-of-way width unknown, 40 to 49 feet occupied width), in the east line of V.M.S. 11015, in the west line of V.M.S. 14159, at the northeast corner of said 114.77 acre tract and at the northwest corner of James G. Reed, Trustee's 148.390 acre (Tract 1) described in Logan County Official Record Volume 1411, page 3930 and in Hardin County Official Record Volume 566, page 4269;

Thence **South 04°46'59" East 1325.07 feet**, departing from the centerline of McDonald Township Road 210, following the east line of said 114.77 acre tract, the west line of said 148.390 acre tract, the east line of V.M.S 11015 and the west line of V.M.S 14159, passing an iron bar set at 20.00 feet, to an iron bar set over a stone found at the southeast corner of V.M.S. 11015, the northeast corner of V.M.S. 14288 and at an angle in the west line of V.M.S. 14159;

Thence **South 06°03'00" East 1307.67 feet**, following the east line said 114.77 acre tract, the west line of said 148.390, the east line of V.M.S. 14288, the west line of V.M.S. 14159, leaving Hardin County, passing a berea stone (monument # 28) found at the County line at a distance of 454.22 feet, entering Logan County, following the east line of said 114.77 acre tract and the west line of

INDEXED ON MAP  
1440

said 148.390 acre tract, to a stone found at the southeast corner of V.M.S. 14288, at the southwest corner of V.M.S. 14159, in the north line of V.M.S. 9988-9997 and at a northwest corner to PEWAMO LTD's Exhibit "A", Tract 1 (227.547 acres) described in Logan County Official Record Volume 1225, page 579;

Thence **South 06°34'18" East 329.69 feet**, following the east line of said 114.77 acre tract and the west line of said 227.547 acre tract and entering V.M.S. 9988-9997, to a stone found;

Thence **South 81°35'02" West 128.61 feet**, following the south line of said 114.77 acre tract and a north line of said 227.547 acre tract, to a stone found at a corner to said 114.77 acre tract and a northwest corner to said 227.547 acre tract;

Thence **North 06°17'54" West 165.06 feet**, departing from a northwest corner of said 227.547 acre tract and entering said 114.77 acre tract, to an iron bar set;

Thence **South 83°52'18" West 320.54 feet** to an iron bar set;

Thence **North 06°07'42" West 1044.63 feet**, leaving V.M.S. 9988-9997 and entering V.M.S. 14288, to iron bar set;

Thence **North 84°02'10" East 316.04 feet** to an iron bar set;

Thence **North 06°06'38" West 427.80 feet**, leaving Logan County and entering Hardin County at a distance of 5.91 feet, to an iron bar set;

Thence **North 84°29'32" East 107.36 feet** to an iron bar set;

Thence **North 04°47'29" West 602.37 feet**, leaving V.M.S. 14288 and entering V.M.S. 11015, to a 5/8 inch iron bar found at a corner to said 114.77 acre tract and the southeast corner to Lester L. III and Stephanie Snyder's, 2.263 acres, described in Hardin County Official Record Volume 513, page 2477;




Thence **North 04°42'24" West 729.89 feet**, following a west line of said 114.77 acre tract and the east line of said 2.263 acre tract, passing a 5/8 inch iron bar found at a distance of 710.05 feet, to a 6 inch magspike set in the centerline of McDonald Township Road 210, the north line of said 114.77 acre tract and at the northeast corner of said 2.263 acre tract;

Thence **North 84°08'06" East 24.19 feet**, departing from the northeast corner of said 2.263 acre tract, following the centerline of McDonald Township Road 210 and the north line of said 114.77 acre tract, to the **place of beginning, containing 13.265 acres** more or less and subject to all valid easements and restrictions of record.

Of the above described 13.265 acre tract of land, 2.081 acres are within Hardin County (0.757 acres within V.M.S. 11015 and 1.324 acres within V.M.S. 14288) and 11.184 acres are within Logan County (8.975 acres within V.M.S. 14288 and 2.209 acres within V.M.S. 9988-9997).

The above description was prepared from an actual field survey made by Blackburn Surveying, LLC, George A. Blackburn, Registered Surveyor # 7873, during the month of July 2024. Iron bars set are 5/8 inch by 30 inch reinforcing rods with plastic caps marked "Blackburn RS # 7873". Bearings indicated herein are based on the centerline of McDonald Township Road 210 having a bearing of North 84°08'06" East.

Description prepared by:  7-5-2024  
George A. Blackburn, RS # 7873  
6879 State Route 287  
West Liberty, Ohio 43357 (937) 465-0424





PLAT OF SURVEY IN  
 VIRGINIA MILITARY SURVEYS 9988-9997, 14288 & 11015  
 RICHLAND TOWNSHIP, LOGAN COUNTY, OHIO  
 MCDONALD TOWNSHIP, HARDIN COUNTY, OHIO

DEED REFERENCES:

- (A) LESTER L III & STEPHANIE SNYDER, 2.263 acres, O.R. 513, pg. 2477
- (B) PEWAMO LTD, 261.074 acres, O.R. 537, pg. 1903
- (C) Gene Evans, Exhibit "A", 25.664 acres, O.R. 727, pg. 556-557
- (D) Judith A. Snyder, Exhibit "A", 114.77 acres, O.R. 1293, pg. 127
- (E) Judith A. Snyder, Exhibit "A", 114.77 acres, O.R. 549, pg. 4215

Bearings based on the centerline of Township Road 210 bearing South 84°08'06" West.

REFERENCES:

- Richland Township Plat Book 1870.
- Logan County Surveyor's Record Book "C" pages 440-441.
- 1917 Survey of Hamilton Harrod estate in VMS 11015 Hardin County, H.C. S.B. 2, pg. 391.
- 1996 Survey 117.033 acre tract by Leslie H. Geeslin for L. Leon Snyder II, H.C. S.B. 11, pg. 316.
- Virginia Military Survey 9988-9997, 11015, 14159 and 14288 records.

I HEREBY CERTIFY THAT THIS PLAT WAS PREPARED FROM AN ACTUAL FIELD SURVEY AND THAT MONUMENTS WERE PLACED AS INDICATED HEREON.

*George A. Blackburn* 7-5-2024  
 GEORGE A. BLACKBURN, R.S. 7873



Ethan Tanner Price  
 18.51 acres  
 O.R. 568, pg. 2762

Heartlight Properties, LLC  
 23.453 acres  
 O.R. 549, pg. 1695

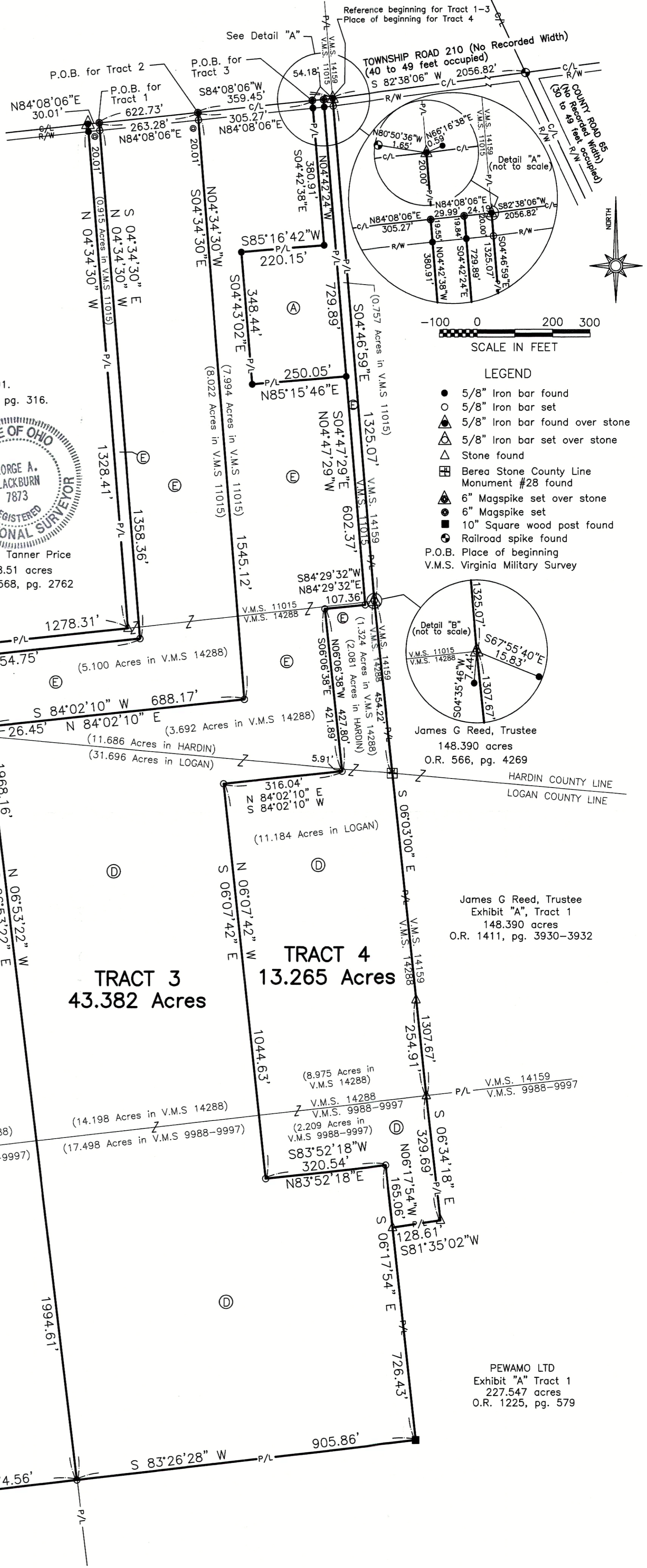
PEWAMO LTD  
 Exhibit "A" Tract 2  
 261.074 acres  
 O.R. 1225, pg. 579

PEWAMO LTD  
 Exhibit "A" Tract 2  
 261.074 acres  
 O.R. 1225, pg. 579

James G Reed, Trustee  
 148.390 acres  
 O.R. 566, pg. 4269

James G Reed, Trustee  
 Exhibit "A", Tract 1  
 148.390 acres  
 O.R. 1411, pg. 3930-3932

PEWAMO LTD  
 Exhibit "A" Tract 1  
 227.547 acres  
 O.R. 1225, pg. 579



**LEGEND**

- 5/8" Iron bar found
- 5/8" Iron bar set
- ▲ 5/8" Iron bar found over stone
- △ 5/8" Iron bar set over stone
- Stone found
- ⊕ Berea Stone County Line Monument #28 found
- ⚓ 6" Magspike set over stone
- ⦿ 6" Magspike set
- 10" Square wood post found
- ⚓ Railroad spike found
- P.O.B. Place of beginning
- V.M.S. Virginia Military Survey

REVISIONS	DATE	BY

