

Road 102  
Richland Twp.  
50' Bellecenter Pike  
Free Turnpike Record 3 Page 122-

staked 25' from  $\frac{1}{2}$  for 50' Road.

1794

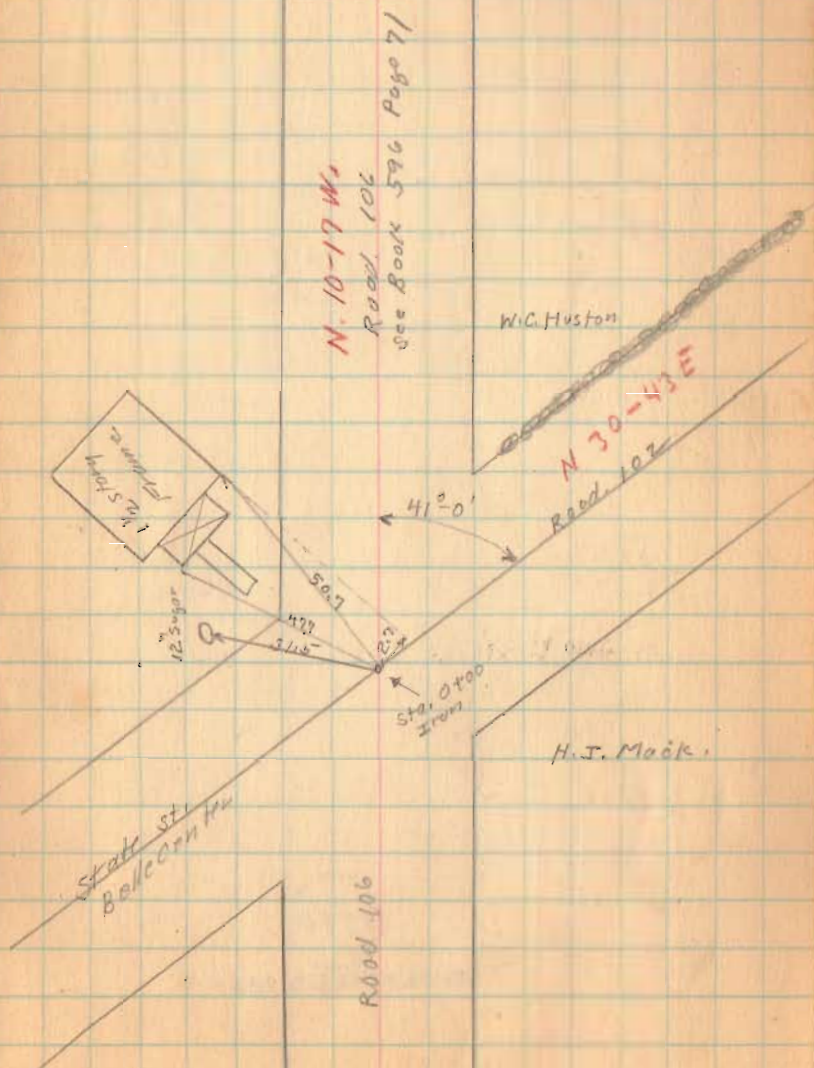
INDEXED ON MAP

5+00

1+50

R/W. Posts

✓  
Aug. 26-1937 50  
Cool-Cloudy  
F. Wright  
G. Wilgus  
J. Montgomery



Road. 102

13750

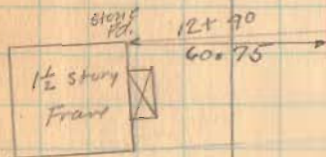
10700

1794

INDEXED ON MAP

8-26-37

51



M.C. Orr

x x 12x 02 x x

H.C. Huston

x 2 x 11x 17 x

11x 23

Walter Lamb  
Ch. Ramsey  
11x 34  
H.C. Moore

Road 102

8-26-57

53

From  
16+82  
0°-00' Right  
L.G. Wilmont

16+82  
H.E. Dysert

N. 30-49E.

J. Wikamot  
W. Leffer

49°-14'

Road 103  
See Box 582  
page 63

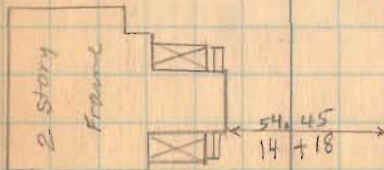
91.10

Erk. Pottery by  
Walter Lamb

16+38.50  
Iron  
No. Angle

stone  
23.95

N. 30-43E.



H.E. Dysert

13+89  
M.G. Orr

17+25

15+75

1794

INDEXED ON MAP

Road 102

29786.5

25+00

20+00

1794

INDEXED ON MAP

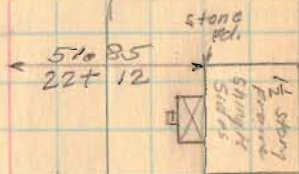
✓ B.M. Marahon  
x x x 27+13  
L.G. Wilmut.

8-26-37

58



50.85  
26+57



L.G. Wilmut.

x x 19+54 x  
Wilmut.

19156  
stone  
Level with Top  
No. Angle

Road 102

40+00

35+00

34+10

1794

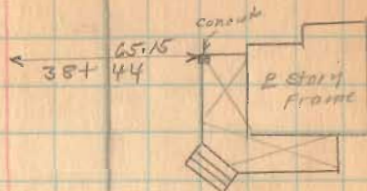
INDEXED ON MAP

8-26-37

W. Leffler

39+66

B.M. Monahan



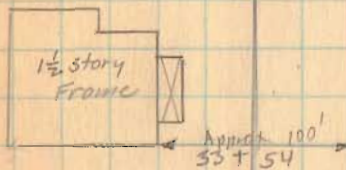
N 31° 11' E.  
N. 36 E.  
Headle

Helm Bloom

34+35.3

J.L. Monahan

Iron Pipe  
34+35.3  
0°-22' Right



Iron Pipe  
29+86.50  
No. Angle

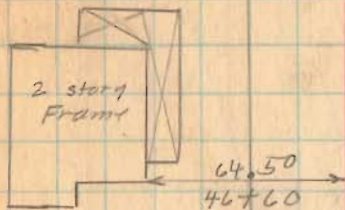
J.L. Monahan  
29+86.50

J.A. Lam et.

8-26-37

50

Road 102

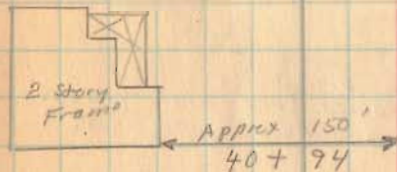


Harry Noble  
48x64  
Helen Bloom

47x25

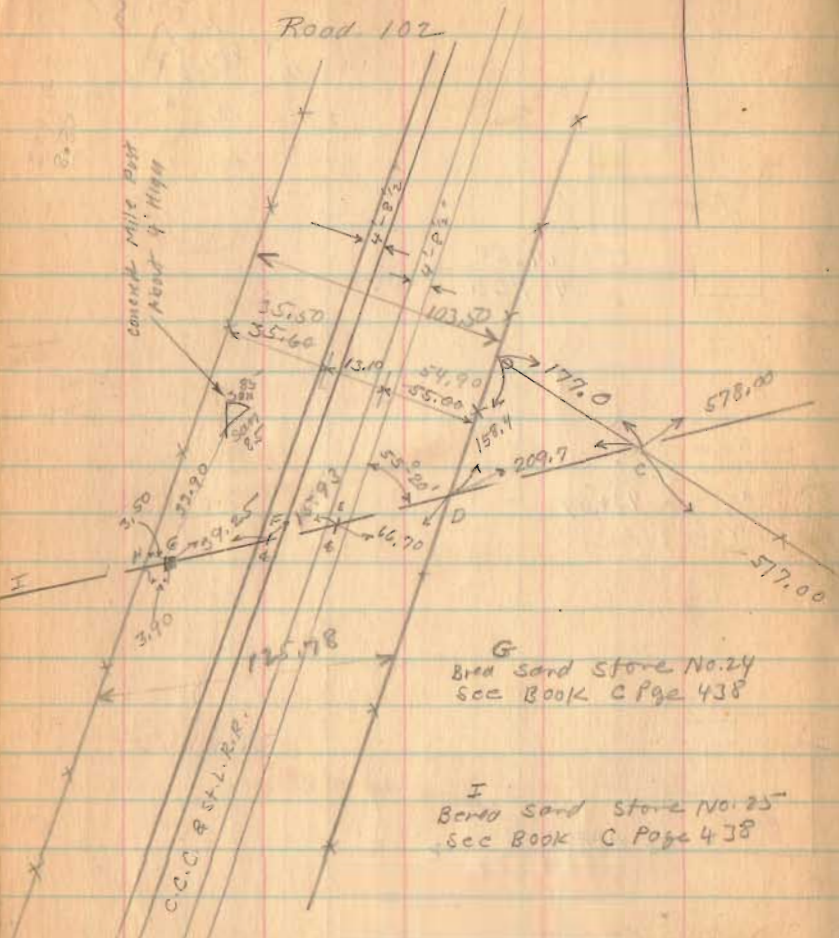
Sam Hall  
John Irvine  
43x09  
Wilcoff/er

43x00



1794

INDEXED ON MAP



(See Page 58)

54+00

50+47.5

1794

INDEXED ON MAP

✓  
 Aug. 27, 1937  
 Cloudy  
 F. Wright  
 G. W. Lewis  
 W. W. Wren  
 J. Montgomery

Length 5488 Feet  
 Length 1.0394 Miles  
 Length 1.004 Miles



49+30 Lane To Have

8-27-37

57

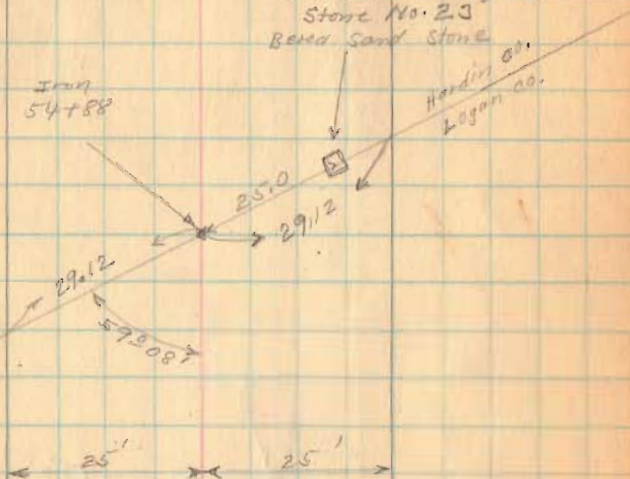
Road 102

(see Page 56)

See Book C Page 438  
Stone No. 23  
Berea Sand Stone

Iron  
54+88

Hardin Co.  
Logan Co.



1794

INDEXED ON MAP

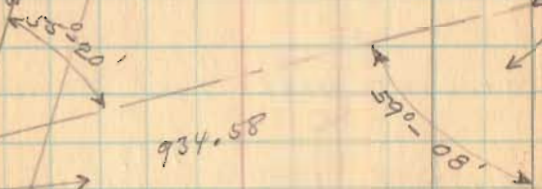


Road 102

Road 106  
See Book 596 Page 27



W. Trunk  
C.C. & F. Trunk  
C.C. & F. Trunk  
R.R.



Road 102



(See Page 56)  
(See Book C Page 438)

1794

INDEXED ON MAP