

THE FRED YODER SURVEY

Being in Richland Township, Logan County, Ohio, and being a part of O.V.M.S. #10503 and more particularly described as follows:

Beginning at the intersection of S. H. 593 (Route 273) and S. H. 130 (Route 117); thence N. 33°-34' W. 386.3 feet; thence N. 14°-59' W. 876.5 feet to a point in the center of S. H. 130; thence S. 83° 14' W. 288.9 feet to an iron pipe, said pipe being the beginning point of this description.

Thence S. 83° 14' W. 1078.0 feet to a concrete fence post; thence N. 6° 31' W. 1836.0 feet to a point in the apparent center of the channel of the North Branch of the Miami River passing through a concrete fence post at 1796.0 feet; thence the following four courses with the apparent channel of the above mentioned river as it existed in 1951 A. D.; N. 89° 22' E. 192.0 feet, S. 63°59' E. 272.0 feet, S. 26° 11' E. 340.0 feet, S. 38° 38' E. 1203.1 feet; thence S. 22° 59' W. 150.0 feet to an iron; passing through an iron at 40.0 feet; thence South 196.0 feet to the point of beginning.

Containing 32.91 Acres more or less.

This tract being surveyed off a 79.62 acres tract, July, 1951.

RIGHT-OF-EASEMENT FROM MILTON YODER TO FRED M. YODER

Being in Richland Township, Logan County, Ohio, and being a part of the O.V.M.S. #10503 and more particularly described as follows:

Beginning at the intersection of S. H. 593 (Route 273) and S. H. 130 (Route 117); thence N. 33°-34' W. 386.3 feet; thence N. 14°-59' W. 876.5 feet to the place of beginning of this description, being a point in the center of S. H. 130.

Thence S. 83°-14' W. 288.9 feet to an iron passing through a concrete fence post at 30.0 feet; thence North 30.0 feet; thence N. 83°-14' E. 288.9 feet, thence S. 14° 59' E. 30.0 feet to the place of beginning.

Containing .20 of an acre more or less.

Being Surveyed July, 1951, off of a 126.18 tract.

INDEXED ON MAP

3348 ID

REC'D 12-11-03 SWM/AL

Lee Surveying and Mapping Co., Inc.

Land Surveys • Topography • Subdivisions • Construction Layout

117 N. Madriver St.
Bellefontaine OH 43311



Phone: (937) 593-7335
Fax: (937) 593-7444

CARSON 8.235 ACRE EASEMENT

Lying in Virginia Military Survey 10503, Richland Township, Logan County, Ohio.

Being an easement over the Gary A. Carson original 32.91 acre tract as deeded and described in Volume 397, Page 470 of the Logan County Records of Deeds and being more particularly described as follows:

Beginning at a railroad spike found at Station 167 + 17.7 (Field Book 387, Page 21), in the center-line of Ohio Route 117 (being 60 feet wide).

THENCE, with the center-line of Ohio Route 117, N 16°-52'-17"W, a distance of 449.86 feet to a MAG nail set.

THENCE, with a north line extended and a north line of the James Bach 38.587 acre tract (O.R. 548, Pg. 558 Parcel III), S 81°-16'-09"W, a distance of 419.61 feet to a 5/8 inch iron rod set at the TRUE POINT OF BEGINNING.

THENCE, with a north line of the said 38.587 acre tract, S 81°-16'-09"W, a distance of 184.32 feet to a 5/8 inch iron rod set.

THENCE, N 8°-23'-25"W, a distance of 542.55 feet to a 5/8 inch iron rod set.

THENCE, N 29°44'-12"W, a distance of 1106.91 feet to a 5/8 inch iron rod set.

THENCE, N 69°-17'-53"W, a distance of 421.34 feet to a 5/8 inch iron rod set.

THENCE, with the west line of Virginia Military Survey 10503 and the east line of the Gary A. Carson and Gloria F. Carson 100.74 acre tract (O.R. 453, Pg. 268), N 8°-29'-54"W, a distance of 48.91 feet to a point in the center-line of the Great Miami River, passing a 5/8 inch iron rod set at 17.91 feet.

THENCE, with the center-line of the Great Miami River, the following four (4) courses:

With a south line of the North Fork Subdivision No. 2 (Plat Cabinet A, Slide 520), N 59°-39'-25"E, a distance of 63.27 feet to a point, referenced by a 5/8 inch iron rod set, S 34°-44'-07"E, a distance of 23.00 feet.

With a south line of the North Fork Subdivision No. 2, S 76°-03'-38"E, a distance of 300.82 feet to a point, referenced by a 5/8 inch iron rod set, S 14°-54'-44"W, a distance of 20.00 feet.

With a south line of the North Fork Subdivision No. 2 S 58°-00'-45"E, a distance of 118.43 feet to a point, referenced by a 5/8 inch iron rod set, S 34°-59'-47"W, a distance of 25.00 feet.

With a south line of the North Fork Subdivision No. 2, the west lines of the Donald R. Williams, Jr. 2.97 acre tract (O.R. 360, Pg. 511), Donald R. Williams 2.312 acre tract (Vol. 371, Pg. 837), 2D-1

INDEXED ON MAP
3348

Lee Surveying and Mapping Co., Inc.

Land Surveys • Topography • Subdivisions • Construction Layout

117 N. Madriver St.
Bellefontaine OH 43311



Phone: (937) 593-7335
Fax: (937) 593-7444

Larry Cope 2.14 acre tract (O.R. 290, Pg. 896), Donald R. Williams, Sr. 0.825 acre tract and his 0.729 acre tract (O.R. 578, Pg. 393 tracts II and I), and James E. Rader 1.268 acre tract (O.R. 454, Pg. 291), S 36°-35'-42"E, a distance of 1276.79 feet to a point.

THENCE, S 00°-22'-47"E, a distance of 538.86 feet to the point of beginning, passing by a 5/8 inch iron rod set at 24.00 feet.

Containing 8.235 acres.

The basis for bearings is the center-line of Ohio Route 117, being N 16°-52'-17"W, and all other bearings are from angles and distances measured in a field survey by Lee Surveying and Mapping Co., Inc. on November 4, 2003.

Description prepared by:



ORIGINAL STAMP IN GREEN

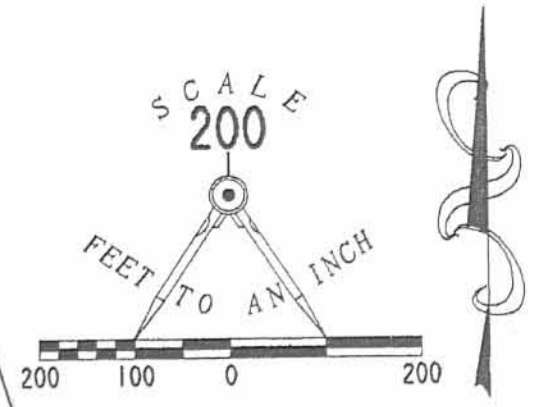
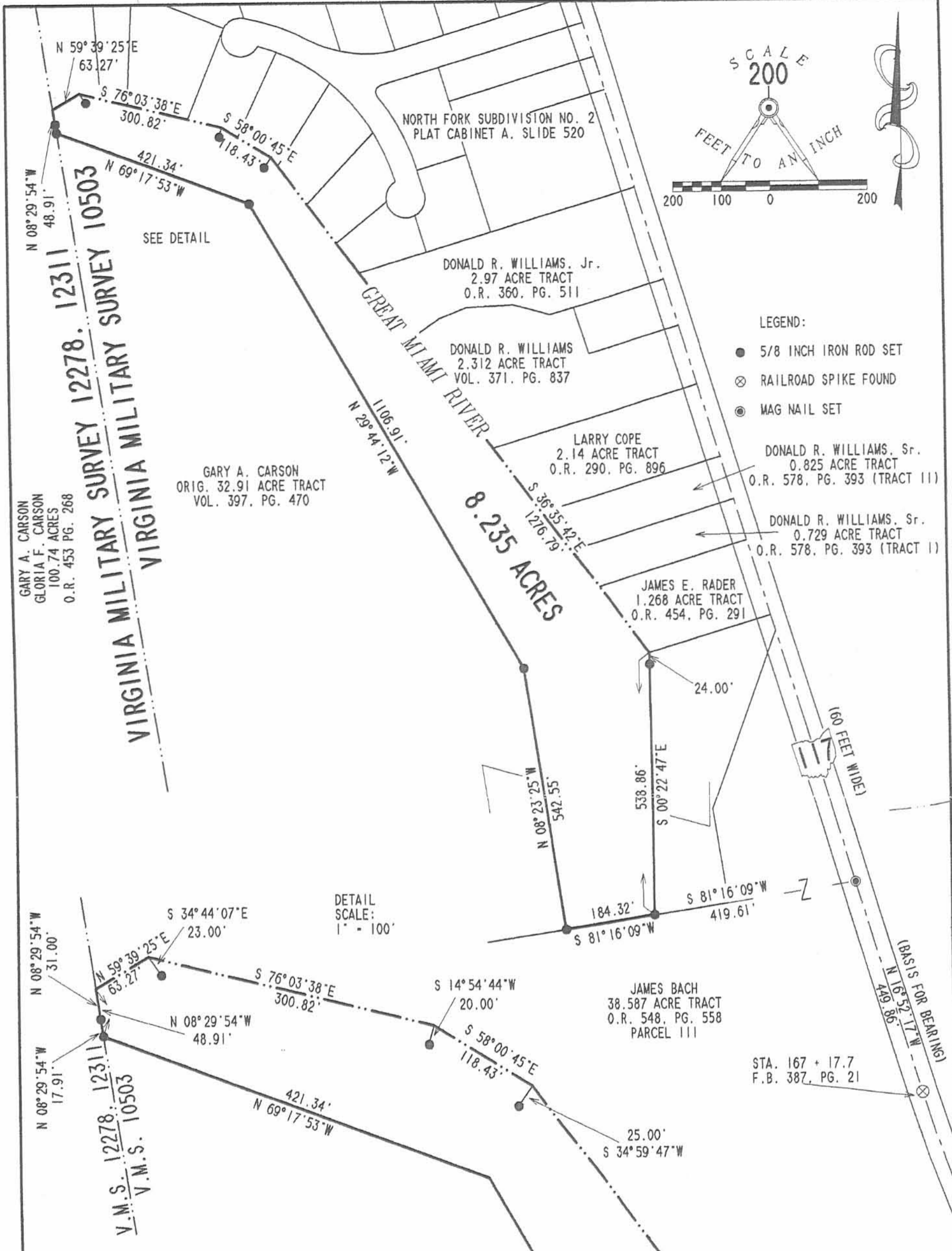
A handwritten signature in black ink, appearing to read 'J. Lee'.

Jeffrey I. Lee
Professional Surveyor 6359
November 10, 2003

12/11/03

L-3663

2D-2
INDEXED ON MAP
3348



- LEGEND:
- 5/8 INCH IRON ROD SET
 - ⊗ RAILROAD SPIKE FOUND
 - ⊙ MAG NAIL SET
- DONALD R. WILLIAMS, Sr.
0.825 ACRE TRACT
O.R. 578, PG. 393 (TRACT II)
- DONALD R. WILLIAMS, Sr.
0.729 ACRE TRACT
O.R. 578, PG. 393 (TRACT I)

**SURVEY OF A 8.235 ACRE EASEMENT
OVER THE GARY A. CARSON
ORIGINAL 32.91 ACRE TRACT
VOLUME 397, PAGE 470
VIRGINIA MILITARY SURVEY 10503
RICHLAND TOWNSHIP
LOGAN COUNTY, OHIO**

SURVEYED BY:
Jeffrey I. Lee
JEFFREY I. LEE
PROFESSIONAL SURVEYOR 6359
NOVEMBER 4, 2003
12/11/03



COPYRIGHT 2003 BY:
LEE SURVEYING & MAPPING CO., INC.
117 North Madriver Street
BELLEFONTAINE, OHIO 43311
(937) 593-7335

2 WORKING DAYS
BEFORE YOU DIG
CALL TOLL FREE **800-362-2764**
OHIO UTILITIES PROTECTION SERVICE.

INDEXED ON MAP
3348

D 411 JIMBACH3 L-3663-2