

E Road 95 Richland & MacArthur Twp.  
50' R./W.

71+71 found 1" # iron, angle Rt.  $0^{\circ}-08'$ .

500.27

66+71.0 Township line, angle Rt.  $1^{\circ}-41'-20''$

Set pk on E produced from  
54+61 and 50+11 intersecting  
line between Twp. men. Also  
used line from 71+71, this  
checked, angle  $0^{\circ}-08'$ .

60+54.63 PK

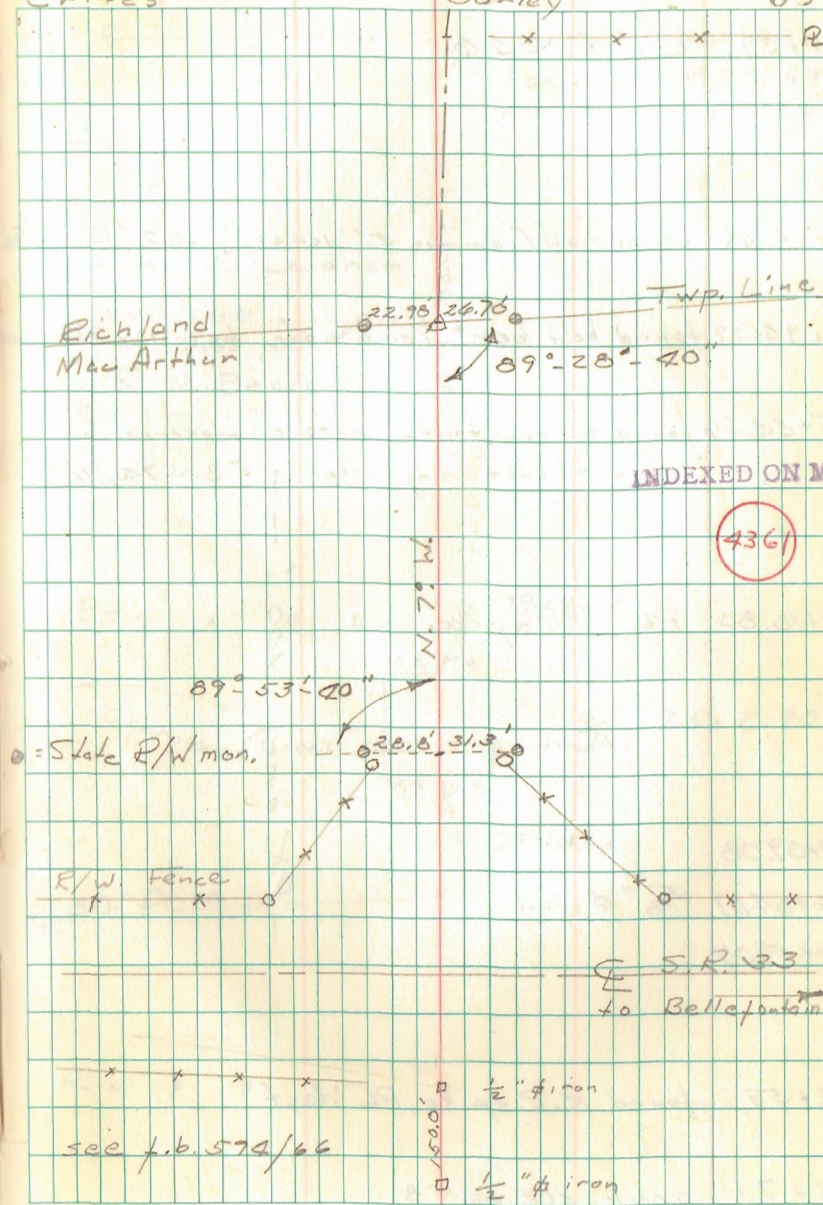
--- Rechecked line of sight, it passes  
exactly thru points at 56+11 and 54+61.

50+11

54+61

Nichols Thompson  
J. Buchenroth  
Crites

8 August 1967  
Hot 85<sup>o</sup> overcast alt. sun  
Gunley 53





E Rd. 95 cont

100+39. E S.R. 366

98+24.60 found nail (common 5" variety) .22' E. of E

94+94.59 found bolt, bent (see note below on 95+44.60)

95+44.60 found harrow teeth, note difference in sta. with stationing listed in EB 574/69

80+18.80 PL, RR spike

77+09.08

76+84.07 5/8" iron

76+59.04

74+59 found R.R. spike, PL West

71+71 angle see pg. 58

Nichols Thompson  
J. Bucherrott  
Grites

9 Aug 1967  
75° overcast, rain 1410  
Gurley 59

E

S.R. 366

see book 574/69  
for intersection data

"Ark"

Frank E. Leidner

PL wood fence

wood post

R.M. Beard

PL

149.99' 130.01'

PL x x x x

79+95.8

5.8 17.8

Charotee Creek

5.2 17.8

Br. 75-2.90

trestle

79+31.5

E 50' Drive

R x x x x