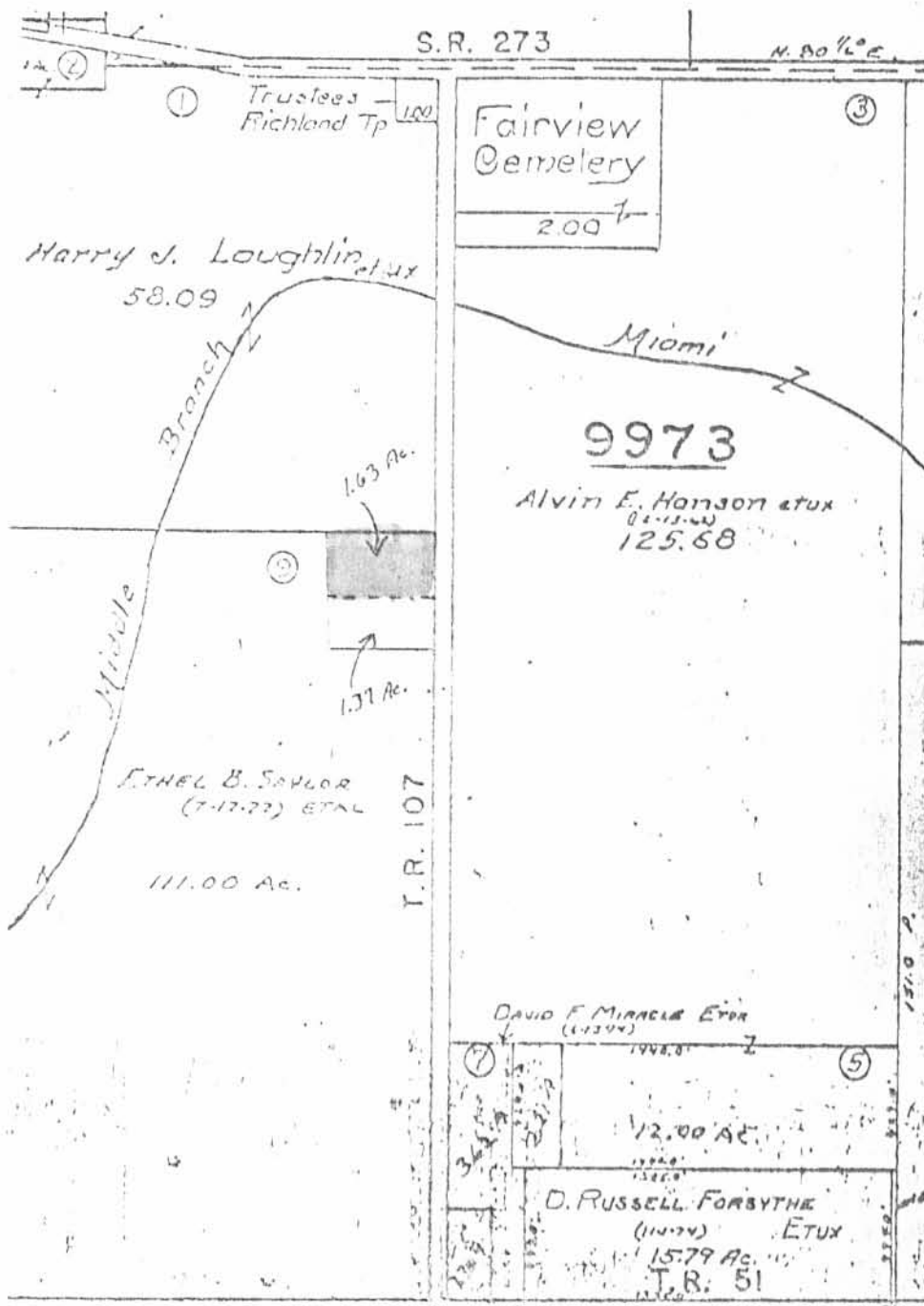


ALVIN E. HANSON DESCRIPTION
February 1981

Situated in the County of Logan, State of Ohio, and Township of Richland, and being in V. M. S. 9973, and bounded and described as follows:

Beginning at a post, hickory and elm, N. E. corner of said lot, and which lot is what was Samuel Johnson's N. E. corner; thence S. $11^{\circ} 30'$ E. 13 poles to a point; thence S. $78^{\circ} 30'$ W. 20 poles to a point in the W. line of said 3 acre tract; thence N. $11^{\circ} 30'$ W. 13 poles to the post in the center of Miami Creek, and being the N. W. corner of said lot; thence N. $78^{\circ} 30'$ E. 20 poles to the place of beginning, containing 1.63 acres, more or less.

Being off the north side of a three acre tract in the name of Alvin E. Hanson etux as recorded in Deed Volume 285, Page 418.



INDEXED ON MAP

PEZ'D 11-8-05 8MM OK

Lee Surveying and Mapping Co., Inc.

Land Surveys • Topography • Subdivisions • Construction Layout

117 N. Madriver St.
Bellefontaine OH 43311



Phone: (937) 593-7335
Fax: (937) 593-7444

1975-2005 - 30 YEARS OF EXCELLENCE

**SMITH
10.912 ACRES**

Lying in Virginia Military Survey 9973, Richland Township, Logan County, Ohio.

Being out of the Samuel J. Smith 110.9 acre tract as deeded and described in Official Record 256, Page 698 of the Logan County Records of Deeds and being more particularly described as follows:

Beginning at a railroad spike found on the north line of Virginia Military Survey 9973 at the intersection of center-lines of Ohio Route 273 and Township Road 107.

THENCE, with the center-line of Township Road 107 (40 feet wide), S 8°-28'-52"E, a distance of 1751.47 feet to a point.

THENCE, with the south line of the David Shoots Laughlin, Trustee 62.26 acre tract (O.R. 338, Pg. 19) and the north line and north line extended of the Lucas W. McCarren 3 acre tract (O.R. 375, Pg. 33), S 81°-40'-31"W, a distance of 816.67 feet to a point at the TRUE POINT OF BEGINNING.

THENCE, S 39°-03'-08"W, a distance of 297.60 feet to a point, referenced by a 5/8 inch iron rod set N 50°-18'-47"W, a distance of 14.00 feet.

THENCE, S 35°-30'-54"W, a distance of 696.90 feet to a point, referenced by a 5/8 inch iron rod set N 73°-12'-27"W, a distance of 16.91 feet.

THENCE, S 4°-40'-12"E, a distance of 155.94 feet to a point, referenced by a 5/8 inch iron rod set N 88°-38'-00"W, a distance of 23.04 feet.

THENCE, S 6°-30'-52"W, a distance of 306.30 feet to a point, referenced by a 5/8 inch iron rod set N 88°-14'-19"W, a distance of 14.02 feet,

THENCE, S 2°-04'-27"E, a distance of 448.73 feet to a point, referenced by a 5/8 inch iron rod set S 88°-41'-31"W, a distance of 20.00 feet.

THENCE, S 53°-42'-00"W, a distance of 24.41 feet to a point.

THENCE, N 62°-53'-39"W, a distance of 36.24 feet to a point.

THENCE, with the east line of the David W. Liles 124.725 acre tract (O.R. 303, Pg. 14, Tract I), N 8°-15'-21"W, a distance of 1592.40 feet to a 5/8 inch iron rod set, passing a 5/8 inch iron rod set at 16.00 feet.

THENCE, with the south lines of the said 124.725 acre tract and the aforesaid 62.26 acre tract, N 81°-40'-31"E, a distance of 888.11 feet to the point of beginning, passing a 5/8 inch iron rod set at 872.11 feet.

Containing 10.912 acres.

The basis for bearings is the center-line of Township Road 107, being S 8°-28'-52"E, and all other bearings are from angles and distances measured in a field survey by Lee Surveying and Mapping Co., Inc. on November 2, 2005. The easterly lines of the above described tract are not intended to follow the center-line of the Great Miami River.



Description prepared by:

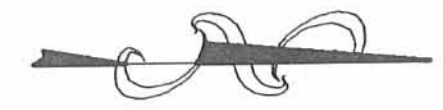
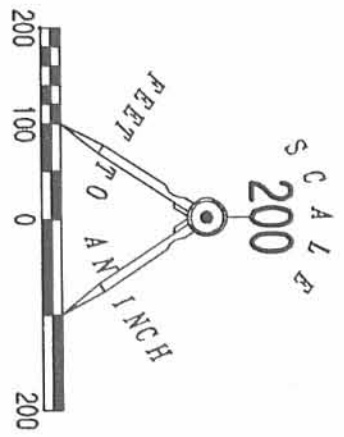
Jeffrey I. Lee
Professional Surveyor 6359
November 3, 2005

ORIGINAL STAMP IN GREEN

INDEXED ON MAY 20
6655 2D

L-4123

REV D 11-8-05 SMM/BLK



V.M.S. 13137
 V.M.S. 9973

DAVID SHOOTS LAUGHLIN, TRUSTEE
 62.26 ACRES
 O.R. 338, PG. 19

TOWNSHIP ROAD 107 (40')
 (BASIS FOR BEARINGS)
 S 08°28'52" E
 1751.47'

LUCAS W. McCARREN
 3 ACRES
 O.R. 375, PG. 33

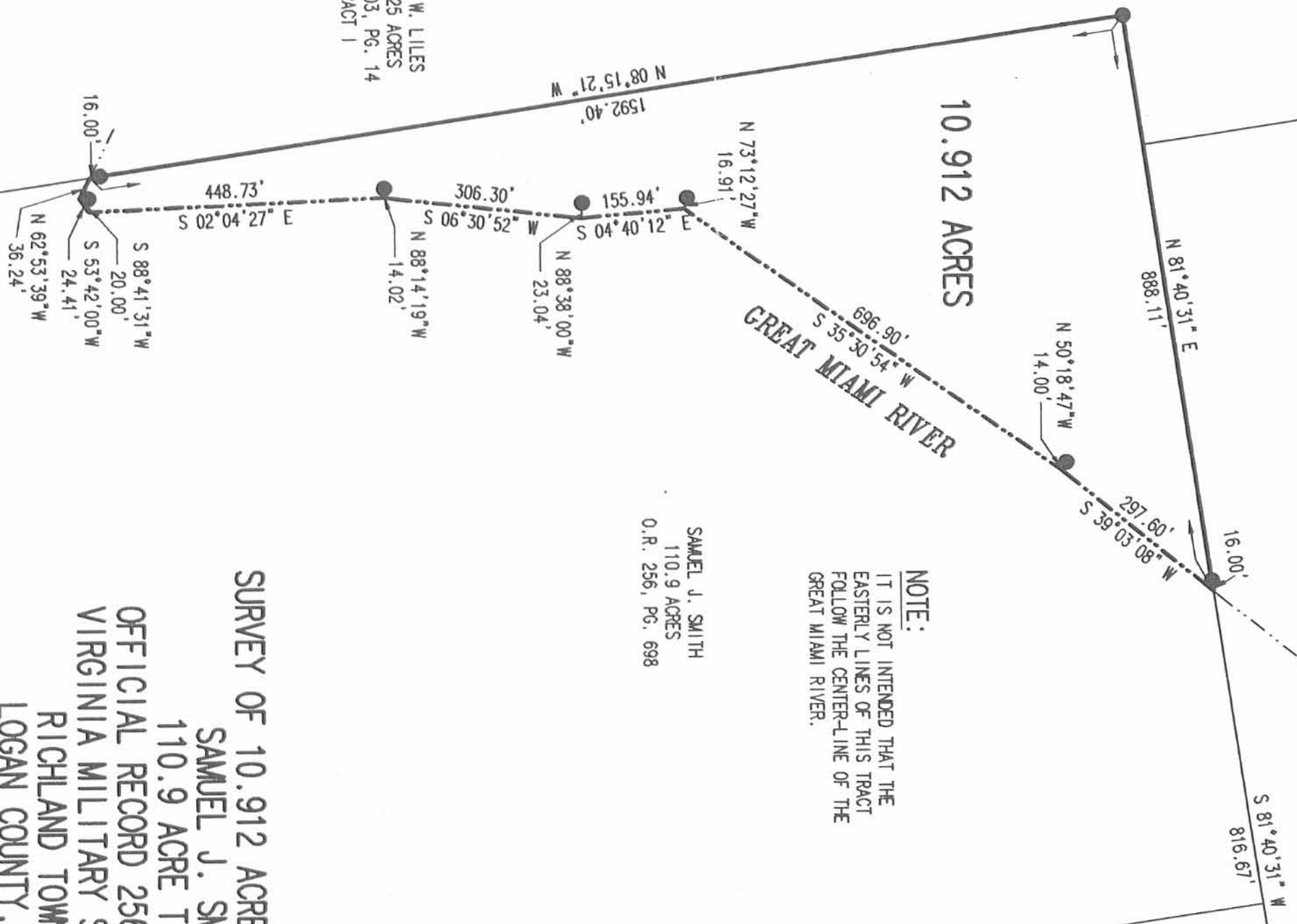
10.912 ACRES

GREAT MIAMI RIVER

NOTE:
 IT IS NOT INTENDED THAT THE
 EASTERLY LINES OF THIS TRACT
 FOLLOW THE CENTER-LINE OF THE
 GREAT MIAMI RIVER.

SAMUEL J. SMITH
 110.9 ACRES
 O.R. 256, PG. 698

DAVID W. LILES
 124.725 ACRES
 O.R. 303, PG. 14
 TRACT 1



SURVEY OF 10.912 ACRES OUT OF THE
 SAMUEL J. SMITH
 110.9 ACRE TRACT
 OFFICIAL RECORD 256, PAGE 698
 VIRGINIA MILITARY SURVEY 9973
 RICHLAND TOWNSHIP
 LOGAN COUNTY, OHIO

SURVEYED BY:

JEFFREY I. LEE
 PROFESSIONAL SURVEYOR 6359
 NOVEMBER 2, 2005

COPYRIGHT 2005 BY:
 LEE SURVEYING & MAPPING CO., INC.
 117 North Madriver Street
 BELLEFONTAINE, OHIO 43311
 (937) 593-7335
 4123105



INDEXED ON MAP 6655 2P

2 WORKING DAYS
BEFORE YOU DIG
 CALL TOLL FREE 800-362-2764
 OHIO UTILITIES PROTECTION SERVICE.

ORIGINAL STAMP IN GREEN

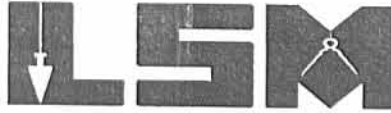
KSR D1105 L-4123-3

REC'D 11-0-05 SML/OK

Lee Surveying and Mapping Co., Inc.

Land Surveys • Topography • Subdivisions • Construction Layout

117 N. Madriver St.
Bellefontaine OH 43311



Phone: (937) 593-7335
Fax: (937) 593-7444

1975-2005 - 30 YEARS OF EXCELLENCE

**SMITH
5.583 ACRES**

Lying in Virginia Military Survey 9973, Richland Township, Logan County, Ohio.

Being out of the Samuel J. Smith 110.9 acre tract as deeded and described in Official Record 256, Page 698 of the Logan County Records of Deeds and being more particularly described as follows:

Beginning at a 5/8 inch iron rod found on the south line of Virginia Military Survey 9973 at the intersection of center-lines of Township Road 107 and Township Road 51.

THENCE, with the south line of Virginia Military Survey 9973 and the center-line of Township Road 51 (60 feet wide), S 81°-34'-34"W, a distance of 640.00 feet to a MAG nail set.

THENCE, N 7°-32'-05"W, a distance of 380.00 feet to a 5/8 inch iron rod set, passing a 5/8 inch iron rod set at 30.00 feet.

THENCE, N 81°-34'-34"E, a distance of 640.00 feet to a MAG nail set on the center-line of Township Road 107, passing a 5/8 inch iron rod set at 620.00 feet.

THENCE, with the center-line of Township Road 107 (40 feet wide), S 7°-32'-05"E, a distance of 380.00 feet to the point of beginning.

Containing 5.583 acres, of which 0.601 acre is within the highway rights-of-way.

The basis for bearings is the center-line of Township Road 107, being S 7°-32'-05"E, and all other bearings are from angles and distances measured in a field survey by Lee Surveying and Mapping Co., Inc. on November 2, 2005.



ORIGINAL STAMP IN GREEN

Description prepared by:

Jeffrey I. Lee
Professional Surveyor 6359
November 3, 2005

L-4123

INDEXED ON MAP
6655 3D-1

REV'D 11-8-05 SMMOK
Lee Surveying and Mapping Co., Inc.

Land Surveys • Topography • Subdivisions • Construction Layout

117 N. Madriver St.
Bellefontaine OH 43311



Phone: (937) 593-7335
Fax: (937) 593-7444

1975-2005 - 30 YEARS OF EXCELLENCE

**SMITH
TRACT P
7.346 ACRES**

Lying in Virginia Military Survey 9973, Richland Township, Logan County, Ohio.

Being out of the Samuel J. Smith 110.9 acre tract as deeded and described in Official Record 256, Page 698 of the Logan County Records of Deeds and being more particularly described as follows:

Beginning at a 5/8 inch iron rod found on the south line of Virginia Military Survey 9973 at the intersection of center-lines of Township Road 107 and Township Road 51.

THENCE, with the center-line of Township Road 107 (40 feet wide), N 7°-32'-05"W, a distance of 380.00 feet to a MAG nail set at the TRUE POINT OF BEGINNING.

THENCE, S 81°-34'-34"W, a distance of 640.00 feet to a 5/8 inch iron rod set, passing a 5/8 inch iron rod set at 20.00 feet.

THENCE, N 7°-32'-05"W, a distance of 500.00 feet to a 5/8 inch iron rod set.

THENCE, N 81°-34'-34"E, a distance of 640.00 feet to a MAG nail set on the center-line of Township Road 107, passing a 5/8 inch iron rod set at 620.00 feet.

THENCE, with the center-line of Township Road 107, S 7°-32'-05"E, a distance of 500.00 feet to the point of beginning.

Containing 7.346 acres, of which 0.230 acre is within the highway right-of-way.

The basis for bearings is the center-line of Township Road 107, being S 7°-32'-05"E, and all other bearings are from angles and distances measured in a field survey by Lee Surveying and Mapping Co., Inc. on November 2, 2005.



ORIGINAL STAMP IN GREEN

Description prepared by:

A handwritten signature in black ink, appearing to read 'Jeffrey I. Lee'.
Jeffrey I. Lee
Professional Surveyor 6359
November 3, 2005

L-4123

INDEXED ON MAP
6655

3D-2

REV'D 11-8-05 SWM/CLC
Lee Surveying and Mapping Co., Inc.

Land Surveys • Topography • Subdivisions • Construction Layout

117 N. Madriver St.
Bellefontaine OH 43311



Phone: (937) 593-7335
Fax: (937) 593-7444

1975-2005 - 30 YEARS OF EXCELLENCE

**SMITH
TRACT R
7.346 ACRES**

Lying in Virginia Military Survey 9973, Richland Township, Logan County, Ohio.

Being out of the Samuel J. Smith 110.9 acre tract as deeded and described in Official Record 256, Page 698 of the Logan County Records of Deeds and being more particularly described as follows:

Beginning at a 5/8 inch iron rod found on the south line of Virginia Military Survey 9973 at the intersection of center-lines of Township Road 107 and Township Road 51.

THENCE, with the center-line of Township Road 107 (40 feet wide), N 7°-32'-05"W, a distance of 880.00 feet to a MAG nail set at the TRUE POINT OF BEGINNING.

THENCE, S 81°-34'-34"W, a distance of 640.00 feet to a 5/8 inch iron rod set, passing a 5/8 inch iron rod set at 20.00 feet.

THENCE, N 7°-35'-55"W, a distance of 500.00 feet to a 5/8 inch iron rod set.

THENCE, N 81°-34'-34"E, a distance of 640.05 feet to a MAG nail set on the center-line of Township Road 107, passing a 5/8 inch iron rod set at 620.05 feet.

THENCE, with the center-line of Township Road 107, the following two courses:

S 7°-35'-55"E, a distance of 454.08 feet to a 3/4 inch square iron bolt found.

S 7°-32'-05"E, a distance of 45.92 feet to the point of beginning.


Containing 7.346 acres, of which 0.230 acre is within the highway right-of-way.

The basis for bearings is the center-line of Township Road 107, being S 7°-32'-05"E, and all other bearings are from angles and distances measured in a field survey by Lee Surveying and Mapping Co., Inc. on November 2, 2005.

Description prepared by:



ORIGINAL STAMP IN GREEN


Jeffrey I. Lee
Professional Surveyor 6359
November 3, 2005

L-4123

INDEXED ON MAP
6655

3D-3

REC'D 11-0-05 8M OK
Lee Surveying and Mapping Co., Inc.

Land Surveys • Topography • Subdivisions • Construction Layout

117 N. Madriver St.
Bellefontaine OH 43311



Phone: (937) 593-7335
Fax: (937) 593-7444

1975-2005 - 30 YEARS OF EXCELLENCE

**SMITH
7.385 ACRES**

Lying in Virginia Military Survey 9973, Richland Township, Logan County, Ohio.

Being out of the Samuel J. Smith 110.9 acre tract as deeded and described in Official Record 256, Page 698 of the Logan County Records of Deeds and being more particularly described as follows:

Beginning at a 5/8 inch iron rod found on the south line of Virginia Military Survey 9973 at the intersection of center-lines of Township Road 107 and Township Road 51.

THENCE, with the center-line of Township Road 107 (40 feet wide), the following two courses:

N 7°-32'-05"W, a distance of 925.92 feet to a 3/4 inch square iron bolt found.

N 7°-35'-55"W, a distance of 454.08 feet to a MAG nail set at the TRUE POINT OF BEGINNING.

THENCE, S 81°-34'-34"W, a distance of 640.05 feet to a 5/8 inch iron rod set, passing a 5/8 inch iron rod set at 20.00 feet.

THENCE, N 7°-35'-55"W, a distance of 505.39 feet to a 5/8 inch iron rod set.

THENCE, N 82°-03'-31"E, a distance of 640.00 feet to a MAG nail set on the center-line of Township Road 107, passing a 5/8 inch iron rod set at 620.00 feet.

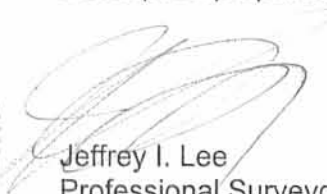
THENCE, with the center-line of Township Road 107, S 7°-35'-55"E, a distance of 500.00 feet to the point of beginning.

Containing 7.385 acres, of which 0.230 acre is within the highway right-of-way.

The basis for bearings is the center-line of Township Road 107, being S 7°-32'-05"E, and all other bearings are from angles and distances measured in a field survey by Lee Surveying and Mapping Co., Inc. on November 2, 2005.

Description prepared by:

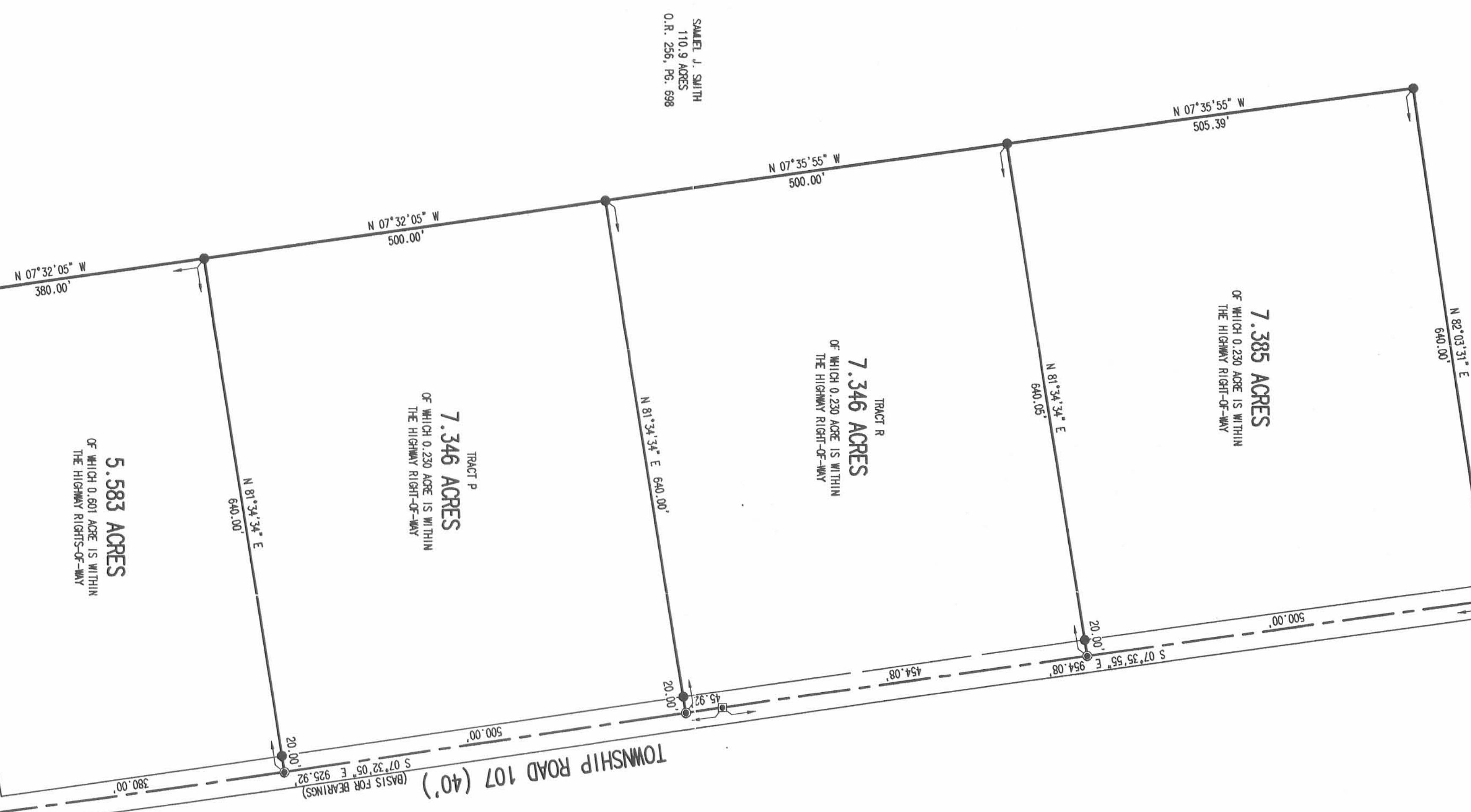
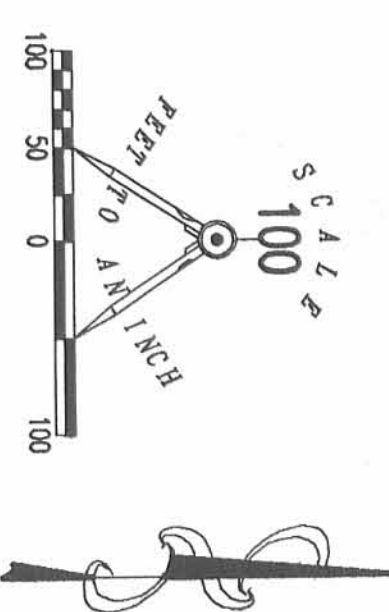



Jeffrey I. Lee
Professional Surveyor 6359
November 3, 2005

L-4123

ORIGINAL STAMP IN GREEN

INDEXED ON MAP
6655 3D-4



SAMUEL J. SMITH
110.9 ACRES
O.R. 256, Pg. 698

**SURVEY OF FOUR TRACTS
OUT OF THE
SAMUEL J. SMITH
110.9 ACRE TRACT
OFFICIAL RECORD 256, PAGE 698
VIRGINIA MILITARY SURVEY 9973
RICHLAND TOWNSHIP
LOGAN COUNTY, OHIO**

SURVEYED BY:

JEFFREY T. LEE
PROFESSIONAL SURVEYOR 6359
NOVEMBER 2, 2005



COPYRIGHT 2005 BY:
LEE SURVEYING & MAPPING CO., INC.
117 North Madriver Street
Bellefontaine, Ohio 43111
(937) 593-7335
KSR D1105 4123095-1 4123105.TXT L-4123-2

2 WORKING DAYS
BEFORE YOU DIG
CALL TOLL FREE 800-362-2764
OHIO UTILITIES PROTECTION SERVICE

RECEIVED ON 11/11/05
6:55
3P

REC'D 11-05 2005

Lee Surveying and Mapping Co., Inc.

Land Surveys • Topography • Subdivisions • Construction Layout

117 N. Madriver St.
Bellefontaine OH 43311



Phone: (937) 593-7335
Fax: (937) 593-7444

1975-2005 - 30 YEARS OF EXCELLENCE

**SMITH
TRACT A
1.396 ACRES**

Lying in Virginia Military Survey 9973, Richland Township, Logan County, Ohio.

Being out of the Samuel J. Smith 110.9 acre tract as deeded and described in Official Record 256, Page 698 of the Logan County Records of Deeds and being more particularly described as follows:

Beginning at a 5/8 inch iron rod found on the south line of Virginia Military Survey 9973 at the intersection of center-lines of Township Road 107 and Township Road 51.

THENCE, with the south line of Virginia Military Survey 9973 and the center-line of Township Road 51 (60 feet wide), S 81°-34'-34"W, a distance of 480.00 feet to a MAG nail set at the TRUE POINT OF BEGINNING.

THENCE, with the south line of Virginia Military Survey 9973 and the center-line of Township Road 51, S 81°-34'-34"W, a distance of 160.00 feet to a MAG nail set.

THENCE, N 7°-32'-05"W, a distance of 380.00 feet to a 5/8 inch iron rod set, passing a 5/8 inch iron rod set at 30.00 feet.

THENCE, N 81°-34'-34"E, a distance of 160.00 feet to a 5/8 inch iron rod set.

THENCE, S 7°-32'-05"E, a distance of 380.00 feet to the point of beginning, passing a 5/8 inch iron rod set at 350.00 feet.

Containing 1.396 acres, of which 0.110 acre is within the highway right-of-way.

The basis for bearings is the center-line of Township Road 107, being S 7°-32'-05"E, and all other bearings are from angles and distances measured in a field survey by Lee Surveying and Mapping Co., Inc. on November 2, 2005.



ORIGINAL STAMP IN GREEN

Description prepared by:

Jeffrey I. Lee
Professional Surveyor 6359
November 2, 2005

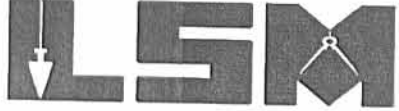
L-4123

INDEXED OF MAP
6655 4D-1

REC'D 11-8-05 SAM OLC
Lee Surveying and Mapping Co., Inc.

Land Surveys • Topography • Subdivisions • Construction Layout

117 N. Madriver St.
Bellefontaine OH 43311



Phone: (937) 593-7335
Fax: (937) 593-7444

1975-2005 - 30 YEARS OF EXCELLENCE

**SMITH
TRACT B
1.396 ACRES**

Lying in Virginia Military Survey 9973, Richland Township, Logan County, Ohio.

Being out of the Samuel J. Smith 110.9 acre tract as deeded and described in Official Record 256, Page 698 of the Logan County Records of Deeds and being more particularly described as follows:

Beginning at a 5/8 inch iron rod found on the south line of Virginia Military Survey 9973 at the intersection of center-lines of Township Road 107 and Township Road 51.

THENCE, with the south line of Virginia Military Survey 9973 and the center-line of Township Road 51 (60 feet wide), S 81°-34'-34"W, a distance of 320.00 feet to a MAG nail set at the TRUE POINT OF BEGINNING.

THENCE, with the south line of Virginia Military Survey 9973 and the center-line of Township Road 51, S 81°-34'-34"W, a distance of 160.00 feet to a MAG nail set.

THENCE, N 7°-32'-05"W, a distance of 380.00 feet to a 5/8 inch iron rod set, passing a 5/8 inch iron rod set at 30.00 feet.

THENCE, N 81°-34'-34"E, a distance of 160.00 feet to a 5/8 inch iron rod set, passing a 5/8 inch iron rod set at 90.00 feet.

THENCE, S 7°-32'-05"E, a distance of 380.00 feet to the point of beginning, passing 5/8 inch iron rods set at 175.00 feet and 350.00 feet.

Containing 1.396 acres, of which 0.110 acre is within the highway right-of-way.

The basis for bearings is the center-line of Township Road 107, being S 7°-32'-05"E, and all other bearings are from angles and distances measured in a field survey by Lee Surveying and Mapping Co., Inc. on November 2, 2005.



ORIGINAL STAMP IN GREEN

Description prepared by:

Jeffrey I. Lee
Professional Surveyor 6359
November 2, 2005

L-4123

INDEXED ON MAP
6655 AD-2

REC'D 11-8-05 SMM/OK
Lee Surveying and Mapping Co., Inc.

Land Surveys • Topography • Subdivisions • Construction Layout

117 N. Madriver St.
Bellefontaine OH 43311



Phone: (937) 593-7335
Fax: (937) 593-7444

1975-2005 - 30 YEARS OF EXCELLENCE

**SMITH
TRACT C
1.506 ACRES**

Lying in Virginia Military Survey 9973, Richland Township, Logan County, Ohio.

Being out of the Samuel J. Smith 110.9 acre tract as deeded and described in Official Record 256, Page 698 of the Logan County Records of Deeds and being more particularly described as follows:

Beginning at a 5/8 inch iron rod found on the south line of Virginia Military Survey 9973 at the intersection of center-lines of Township Road 107 and Township Road 51.

THENCE, with the south line of Virginia Military Survey 9973 and the center-line of Township Road 51 (60 feet wide), S 81°-34'-34"W, a distance of 320.00 feet to a MAG nail set.

THENCE, N 7°-32'-05"W, a distance of 205.00 feet to a 5/8 inch iron rod set, passing a 5/8 inch iron rod set at 30.00 feet.

THENCE, N 81°-34'-34"E, a distance of 320.00 feet to a MAG nail set on the center-line of Township Road 107, passing a 5/8 inch iron rod set at 300.00 feet.

THENCE, with the center-line of Township Road 107 (40 feet wide), S 7°-32'-05"E, a distance of 205.00 feet to the point of beginning.

Containing 1.506 acres, of which 0.301 acre is within the highway rights-of-way.

The basis for bearings is the center-line of Township Road 107, being S 7°-32'-05"E, and all other bearings are from angles and distances measured in a field survey by Lee Surveying and Mapping Co., Inc. on November 2, 2005.



ORIGINAL STAMP IN GREEN

Description prepared by:

A handwritten signature in black ink, appearing to read 'Jeffrey I. Lee'.
Jeffrey I. Lee
Professional Surveyor 6359
November 2, 2005

L-4123

INDEXED ON MAP
6655 4D-3

REC'D 11-8-05 SMY OK
Lee Surveying and Mapping Co., Inc.

Land Surveys • Topography • Subdivisions • Construction Layout

117 N. Madriver St.
Bellefontaine OH 43311



Phone: (937) 593-7335
Fax: (937) 593-7444

1975-2005 - 30 YEARS OF EXCELLENCE

**SMITH
TRACT D
1.285 ACRES**

Lying in Virginia Military Survey 9973, Richland Township, Logan County, Ohio.

Being out of the Samuel J. Smith 110.9 acre tract as deeded and described in Official Record 256, Page 698 of the Logan County Records of Deeds and being more particularly described as follows:

Beginning at a 5/8 inch iron rod found on the south line of Virginia Military Survey 9973 at the intersection of center-lines of Township Road 107 and Township Road 51.

THENCE, with the center-line of Township Road 107 (40 feet wide), N 7°-32'-05"W, a distance of 205.00 feet to a MAG nail set at the TRUE POINT OF BEGINNING.

THENCE, S 81°-34'-34"W, a distance of 320.00 feet to a 5/8 inch iron rod set, passing a 5/8 inch iron rod set at 20.00 feet.

THENCE, N 7°-32'-05"W, a distance of 175.00 feet to a 5/8 inch iron rod set.

THENCE, N 81°-34'-34"E, a distance of 320.00 feet to a MAG nail set on the center-line of Township Road 107, passing a 5/8 inch iron rod set at 300.00 feet.

THENCE, with the center-line of Township Road 107, S 7°-32'-05"E, a distance of 175.00 feet to the point of beginning.

Containing 1.285 acres, of which 0.080 acre is within the highway right-of-way.

The basis for bearings is the center-line of Township Road 107, being S 7°-32'-05"E, and all other bearings are from angles and distances measured in a field survey by Lee Surveying and Mapping Co., Inc. on November 2, 2005.



Description prepared by:

A handwritten signature in black ink, appearing to read 'J. Lee', written over the typed name.

Jeffrey I. Lee
Professional Surveyor 6359
November 2, 2005

L-4123

RECORDED ON MAY 6655 AD-4

REC'D 11-8-05 SVM OK
Lee Surveying and Mapping Co., Inc.

Land Surveys • Topography • Subdivisions • Construction Layout

117 N. Madriver St.
Bellefontaine OH 43311



Phone: (937) 593-7335
Fax: (937) 593-7444

1975-2005 - 30 YEARS OF EXCELLENCE

**SMITH
TRACT E
1.343 ACRES**

Lying in Virginia Military Survey 9973, Richland Township, Logan County, Ohio.

Being out of the Samuel J. Smith 110.9 acre tract as deeded and described in Official Record 256, Page 698 of the Logan County Records of Deeds and being more particularly described as follows:

Beginning at a 5/8 inch iron rod found on the south line of Virginia Military Survey 9973 at the intersection of center-lines of Township Road 107 and Township Road 51.

THENCE, with the center-line of Township Road 107 (40 feet wide), N 7°-32'-05"W, a distance of 380.00 feet to a MAG nail set at the TRUE POINT OF BEGINNING.

THENCE, S 81°-34'-34"W, a distance of 390.00 feet to a 5/8 inch iron rod set, passing 5/8 inch iron rods set at 20.00 feet and 320.00 feet.

THENCE, N 7°-32'-05"W, a distance of 150.00 feet to a 5/8 inch iron rod set.

THENCE, N 81°-34'-34"E, a distance of 390.00 feet to a MAG nail set on the center-line of Township Road 107, passing a 5/8 inch iron rod set at 370.00 feet.

THENCE, with the center-line of Township Road 107, S 7°-32'-05"E, a distance of 150.00 feet to the point of beginning.


Containing 1.343 acres, of which 0.069 acre is within the highway right-of-way.

The basis for bearings is the center-line of Township Road 107, being S 7°-32'-05"E, and all other bearings are from angles and distances measured in a field survey by Lee Surveying and Mapping Co., Inc. on November 2, 2005.



ORIGINAL STAMP IN GREEN

Description prepared by:


Jeffrey I. Lee
Professional Surveyor 6359
November 2, 2005

L-4123

INDEXED OR MA

6655 4D-5

2010 11-8-05 SYM/ALC
Lee Surveying and Mapping Co., Inc.

Land Surveys • Topography • Subdivisions • Construction Layout

117 N. Madriver St.
Bellefontaine OH 43311



Phone: (937) 593-7335
Fax: (937) 593-7444

1975-2005 - 30 YEARS OF EXCELLENCE

**SMITH
TRACT F
1.343 ACRES**

Lying in Virginia Military Survey 9973, Richland Township, Logan County, Ohio.

Being out of the Samuel J. Smith 110.9 acre tract as deeded and described in Official Record 256, Page 698 of the Logan County Records of Deeds and being more particularly described as follows:

Beginning at a 5/8 inch iron rod found on the south line of Virginia Military Survey 9973 at the intersection of center-lines of Township Road 107 and Township Road 51.

THENCE, with the center-line of Township Road 107 (40 feet wide), N 7°-32'-05"W, a distance of 530.00 feet to a MAG nail set at the TRUE POINT OF BEGINNING.

THENCE, S 81°-34'-34"W, a distance of 390.00 feet to a 5/8 inch iron rod set, passing a 5/8 inch iron rod set at 20.00 feet.

THENCE, N 7°-32'-05"W, a distance of 150.00 feet to a 5/8 inch iron rod set.

THENCE, N 81°-34'-34"E, a distance of 390.00 feet to a MAG nail set on the center-line of Township Road 107, passing a 5/8 inch iron rod set at 370.00 feet.

THENCE, with the center-line of Township Road 107, S 7°-32'-05"E, a distance of 150.00 feet to the point of beginning.

Containing 1.343 acres, of which 0.069 acre is within the highway right-of-way.

The basis for bearings is the center-line of Township Road 107, being S 7°-32'-05"E, and all other bearings are from angles and distances measured in a field survey by Lee Surveying and Mapping Co., Inc. on November 2, 2005.

Description prepared by:



[Signature]
Jeffrey I. Lee
Professional Surveyor 6359
November 2, 2005

L-4123

ORIGINAL STAMP IN GREEN

INDEXED ON MA
6655 AD-6

REV'D 11-8-05 SMM OK
Lee Surveying and Mapping Co., Inc.

Land Surveys • Topography • Subdivisions • Construction Layout

117 N. Madriver St.
Bellefontaine OH 43311



Phone: (937) 593-7335
Fax: (937) 593-7444

1975-2005 - 30 YEARS OF EXCELLENCE

**SMITH
TRACT G
4.660 ACRES**

Lying in Virginia Military Survey 9973, Richland Township, Logan County, Ohio.

Being out of the Samuel J. Smith 110.9 acre tract as deeded and described in Official Record 256, Page 698 of the Logan County Records of Deeds and being more particularly described as follows:

Beginning at a 5/8 inch iron rod found on the south line of Virginia Military Survey 9973 at the intersection of center-lines of Township Road 107 and Township Road 51.

THENCE, with the center-line of Township Road 107 (40 feet wide), N 7°-32'-05"W, a distance of 680.00 feet to a MAG nail set at the TRUE POINT OF BEGINNING.

THENCE, S 81°-34'-34"W, a distance of 390.00 feet to a 5/8 inch iron rod set, passing a 5/8 inch iron rod set at 20.00 feet.

THENCE, S 7°-32'-05"E, a distance of 300.00 feet to a 5/8 inch iron rod set, passing a 5/8 inch iron rod set at 150.00 feet.

THENCE, S 81°-34'-34"W, a distance of 250.00 feet to a 5/8 inch iron rod set, passing a 5/8 inch iron rod set at 90.00 feet.

THENCE, N 7°-32'-05"W, a distance of 500.00 feet to a 5/8 inch iron rod set.

THENCE, N 81°-34'-34"E, a distance of 640.00 feet to a MAG nail set on the center-line of Township Road 107, passing a 5/8 inch iron rod set at 620.00 feet.

THENCE, with the center-line of Township Road 107, S 7°-32'-05"E, a distance of 200.00 feet to the point of beginning.

Containing 4.660 acres, of which 0.092 acre is within the highway right-of-way.

The basis for bearings is the center-line of Township Road 107, being S 7°-32'-05"E, and all other bearings are from angles and distances measured in a field survey by Lee Surveying and Mapping Co., Inc. on November 2, 2005.



ORIGINAL STAMP IN GREEN

Description prepared by:

A handwritten signature in black ink, appearing to read 'J. Lee'.

Jeffrey I. Lee
Professional Surveyor 6359
November 2, 2005

L-4123

INDEXED ON MAP
6655

4D-7

DEED 11-8-05 GMM OK
Lee Surveying and Mapping Co., Inc.

Land Surveys • Topography • Subdivisions • Construction Layout

117 N. Madriver St.
Bellefontaine OH 43311



Phone: (937) 593-7335
Fax: (937) 593-7444

1975-2005 - 30 YEARS OF EXCELLENCE

**SMITH
TRACT H
4.660 ACRES**

Lying in Virginia Military Survey 9973, Richland Township, Logan County, Ohio.

Being out of the Samuel J. Smith 110.9 acre tract as deeded and described in Official Record 256, Page 698 of the Logan County Records of Deeds and being more particularly described as follows:

Beginning at a 5/8 inch iron rod found on the south line of Virginia Military Survey 9973 at the intersection of center-lines of Township Road 107 and Township Road 51.

THENCE, with the center-line of Township Road 107 (40 feet wide), N 7°-32'-05"W, a distance of 880.00 feet to a MAG nail set at the TRUE POINT OF BEGINNING.

THENCE, S 81°-34'-34"W, a distance of 640.00 feet to a 5/8 inch iron rod set, passing a 5/8 inch iron rod set at 20.00 feet.

THENCE, N 7°-35'-55"W, a distance of 500.00 feet to a 5/8 inch iron rod set.

THENCE, N 81°-34'-34"E, a distance of 250.05 feet to a 5/8 inch iron rod set, passing a 5/8 inch iron rod set at 220.05 feet.

THENCE, S 7°-35'-55"E, a distance of 300.00 feet to a 5/8 inch iron rod set, passing a 5/8 inch iron rod set at 150.00 feet.

THENCE, N 81°-34'-34"E, a distance of 390.00 feet to a MAG nail set on the center-line of Township Road 107, passing a 5/8 inch iron rod set at 370.00 feet.

THENCE, with the center-line of Township Road 107, the following two courses:

S 7°-35'-55"E, a distance of 154.08 feet to a 3/4 inch square iron bolt found.

S 7°-32'-05"E, a distance of 45.92 feet to the point of beginning.

Containing 4.660 acres, of which 0.092 acre is within the highway right-of-way.

The basis for bearings is the center-line of Township Road 107, being S 7°-32'-05"E, and all other bearings are from angles and distances measured in a field survey by Lee Surveying and Mapping Co., Inc. on November 2, 2005.



ORIGINAL STAMP IN GREEN

Description prepared by:

A handwritten signature in black ink, appearing to read 'J. Lee', written over a faint background.

Jeffrey I. Lee
Professional Surveyor 6359
November 2, 2005

L-4123

LOADED ON MAP
6658

4D-8

REC'D 11-8-05 SJM OK
Lee Surveying and Mapping Co., Inc.

Land Surveys • Topography • Subdivisions • Construction Layout

117 N. Madriver St.
Bellefontaine OH 43311



Phone: (937) 593-7335
Fax: (937) 593-7444

1975-2005 - 30 YEARS OF EXCELLENCE

**SMITH
TRACT J
1.343 ACRES**

Lying in Virginia Military Survey 9973, Richland Township, Logan County, Ohio.

Being out of the Samuel J. Smith 110.9 acre tract as deeded and described in Official Record 256, Page 698 of the Logan County Records of Deeds and being more particularly described as follows:

Beginning at a 5/8 inch iron rod found on the south line of Virginia Military Survey 9973 at the intersection of center-lines of Township Road 107 and Township Road 51.

THENCE, with the center-line of Township Road 107 (40 feet wide), the following two courses:

N 7°-32'-05"W, a distance of 925.92 feet to a 3/4 inch square iron bolt found.

N 7°-35'-55"W, a distance of 154.08 feet to a MAG nail set at the TRUE POINT OF BEGINNING.

THENCE, S 81°-34'-34"W, a distance of 390.00 feet to a 5/8 inch iron rod set, passing a 5/8 inch iron rod set at 20.00 feet.

THENCE, N 7°-35'-55"W, a distance of 150.00 feet to a 5/8 inch iron rod set.

THENCE, N 81°-34'-34"E, a distance of 390.00 feet to a MAG nail set on the center-line of Township Road 107, passing a 5/8 inch iron rod set at 370.00 feet.

THENCE, with the center-line of Township Road 107, S 7°-35'-55"E, a distance of 150.00 feet to the point of beginning.

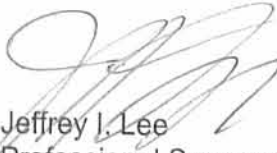
Containing 1.343 acres, of which 0.069 acre is within the highway right-of-way.

The basis for bearings is the center-line of Township Road 107, being S 7°-32'-05"E, and all other bearings are from angles and distances measured in a field survey by Lee Surveying and Mapping Co., Inc. on November 2, 2005.



ORIGINAL STAMP IN GREEN

Description prepared by:


Jeffrey I. Lee
Professional Surveyor 6359
November 2, 2005

L-4123

INDEXED ON MAP
6655 4D-9

REC'D 11-8-05 SWM OK
Lee Surveying and Mapping Co., Inc.

Land Surveys • Topography • Subdivisions • Construction Layout

117 N. Madriver St.
Bellefontaine OH 43311



Phone: (937) 593-7335
Fax: (937) 593-7444

1975-2005 - 30 YEARS OF EXCELLENCE

**SMITH
TRACT K
1.343 ACRES**

Lying in Virginia Military Survey 9973, Richland Township, Logan County, Ohio.

Being out of the Samuel J. Smith 110.9 acre tract as deeded and described in Official Record 256, Page 698 of the Logan County Records of Deeds and being more particularly described as follows:

Beginning at a 5/8 inch iron rod found on the south line of Virginia Military Survey 9973 at the intersection of center-lines of Township Road 107 and Township Road 51.

THENCE, with the center-line of Township Road 107 (40 feet wide), the following two courses:

N 7°-32'-05"W, a distance of 925.92 feet to a 3/4 inch square iron bolt found.

N 7°-35'-55"W, a distance of 304.08 feet to a MAG nail set at the TRUE POINT OF BEGINNING.

THENCE, S 81°-34'-34"W, a distance of 390.00 feet to a 5/8 inch iron rod set, passing a 5/8 inch iron rod set at 20.00 feet.

THENCE, N 7°-35'-55"W, a distance of 150.00 feet to a 5/8 inch iron rod set.

THENCE, N 81°-34'-34"E, a distance of 390.00 feet to a MAG nail set on the center-line of Township Road 107, passing a 5/8 inch iron rod set at 370.00 feet.

THENCE, with the center-line of Township Road 107, S 7°-35'-55"E, a distance of 150.00 feet to the point of beginning.

Containing 1.343 acres, of which 0.069 acre is within the highway right-of-way.

The basis for bearings is the center-line of Township Road 107, being S 7°-32'-05"E, and all other bearings are from angles and distances measured in a field survey by Lee Surveying and Mapping Co., Inc. on November 2, 2005.



ORIGINAL STAMP IN GREEN

Description prepared by:

Jeffrey I. Lee
Professional Surveyor 6359
November 2, 2005

L-4123

6655 4D-10

REC'D 11-8-05 SJM OK
Lee Surveying and Mapping Co., Inc.

Land Surveys • Topography • Subdivisions • Construction Layout

117 N. Madriver St.
Bellefontaine OH 43311



Phone: (937) 593-7335
Fax: (937) 593-7444

1975-2005 - 30 YEARS OF EXCELLENCE

**SMITH
TRACT L
1.446 ACRES**

Lying in Virginia Military Survey 9973, Richland Township, Logan County, Ohio.

Being out of the Samuel J. Smith 110.9 acre tract as deeded and described in Official Record 256, Page 698 of the Logan County Records of Deeds and being more particularly described as follows:

Beginning at a 5/8 inch iron rod found on the south line of Virginia Military Survey 9973 at the intersection of center-lines of Township Road 107 and Township Road 51.

THENCE, with the center-line of Township Road 107 (40 feet wide), the following two courses:

N 7°-32'-05"W, a distance of 925.92 feet to a 3/4 inch square iron bolt found.

N 7°-35'-55"W, a distance of 454.08 feet to a MAG nail set at the TRUE POINT OF BEGINNING.

THENCE, S 81°-34'-34"W, a distance of 420.00 feet to a 5/8 inch iron rod set, passing 5/8 inch iron rods set at 20.00 feet and 390.00 feet.

THENCE, N 7°-35'-55"W, a distance of 150.00 feet to a 5/8 inch iron rod set.

THENCE, N 81°-34'-34"E, a distance of 420.00 feet to a MAG nail set on the center-line of Township Road 107, passing a 5/8 inch iron rod set at 400.00 feet.

THENCE, with the center-line of Township Road 107, S 7°-35'-55"E, a distance of 150.00 feet to the point of beginning.

Containing 1.446 acres, of which 0.069 acre is within the highway right-of-way.

The basis for bearings is the center-line of Township Road 107, being S 7°-32'-05"E, and all other bearings are from angles and distances measured in a field survey by Lee Surveying and Mapping Co., Inc. on November 2, 2005.



ORIGINAL STAMP IN GREEN

Description prepared by:

A handwritten signature in black ink, appearing to read 'J. Lee'.

Jeffrey I. Lee
Professional Surveyor 6359
November 2, 2005

L-4123

INDEXED ON MAP
6655 4D-11

RECID 11-8-05 SMJ OK
Lee Surveying and Mapping Co., Inc.

Land Surveys • Topography • Subdivisions • Construction Layout

117 N. Madriver St.
Bellefontaine OH 43311



Phone: (937) 593-7335
Fax: (937) 593-7444

1975-2005 - 30 YEARS OF EXCELLENCE

**SMITH
TRACT M
1.446 ACRES**

Lying in Virginia Military Survey 9973, Richland Township, Logan County, Ohio.

Being out of the Samuel J. Smith 110.9 acre tract as deeded and described in Official Record 256, Page 698 of the Logan County Records of Deeds and being more particularly described as follows:

Beginning at a 5/8 inch iron rod found on the south line of Virginia Military Survey 9973 at the intersection of center-lines of Township Road 107 and Township Road 51.

THENCE, with the center-line of Township Road 107 (40 feet wide), the following two courses:

N 7°-32'-05"W, a distance of 925.92 feet to a 3/4 inch square iron bolt found.

N 7°-35'-55"W, a distance of 604.08 feet to a MAG nail set at the TRUE POINT OF BEGINNING.

THENCE, S 81°-34'-34"W, a distance of 420.00 feet to a 5/8 inch iron rod set, passing a 5/8 inch iron rod set at 20.00 feet.

THENCE, N 7°-35'-55"W, a distance of 150.00 feet to a 5/8 inch iron rod set.

THENCE, N 81°-34'-34"E, a distance of 420.00 feet to a MAG nail set on the center-line of Township Road 107, passing a 5/8 inch iron rod set at 400.00 feet.

THENCE, with the center-line of Township Road 107, S 7°-35'-55"E, a distance of 150.00 feet to the point of beginning.

Containing 1.446 acres, of which 0.069 acre is within the highway right-of-way.

The basis for bearings is the center-line of Township Road 107, being S 7°-32'-05"E, and all other bearings are from angles and distances measured in a field survey by Lee Surveying and Mapping Co., Inc. on November 2, 2005.



Description prepared by:

A handwritten signature in black ink, appearing to read 'J. Lee'.

Jeffrey I. Lee
Professional Surveyor 6359
November 2, 2005

ORIGINAL STAMP IN GREEN

L-4123

INDEXED ON MAP
6655 4D-12

RECID 11-8-05 SAM OK
Lee Surveying and Mapping Co., Inc.

Land Surveys • Topography • Subdivisions • Construction Layout

117 N. Madriver St.
Bellefontaine OH 43311



Phone: (937) 593-7335
Fax: (937) 593-7444

1975-2005 - 30 YEARS OF EXCELLENCE

**SMITH
TRACT N
4.493 ACRES**

Lying in Virginia Military Survey 9973, Richland Township, Logan County, Ohio.

Being out of the Samuel J. Smith 110.9 acre tract as deeded and described in Official Record 256, Page 698 of the Logan County Records of Deeds and being more particularly described as follows:

Beginning at a 5/8 inch iron rod found on the south line of Virginia Military Survey 9973 at the intersection of center-lines of Township Road 107 and Township Road 51.

THENCE, with the center-line of Township Road 107 (40 feet wide), the following two courses:

N 7°-32'-05"W, a distance of 925.92 feet to a 3/4 inch square iron bolt found.

N 7°-35'-55"W, a distance of 754.08 feet to a MAG nail set at the TRUE POINT OF BEGINNING.

THENCE, S 81°-34'-34"W, a distance of 420.00 feet to a 5/8 inch iron rod set, passing a 5/8 inch iron rod set at 20.00 feet.

THENCE, S 7°-35'-55"E, a distance of 300.00 feet to a 5/8 inch iron rod set, passing a 5/8 inch iron rod set at 150.00 feet.

THENCE, S 81°-34'-34"W, a distance of 220.05 feet to a 5/8 inch iron rod set.

THENCE, N 7°-35'-55"W, a distance of 505.39 feet to a 5/8 inch iron rod set.

THENCE, N 82°-03'-31"E, a distance of 640.00 feet to a MAG nail set on the center-line of Township Road 107, passing a 5/8 inch iron rod set at 620.00 feet.

THENCE, with the center-line of Township Road 107, S 7°-35'-55"E, a distance of 200.00 feet to the point of beginning.

Containing 4.493 acres, of which 0.092 acre is within the highway right-of-way.

The basis for bearings is the center-line of Township Road 107, being S 7°-32'-05"E, and all other bearings are from angles and distances measured in a field survey by Lee Surveying and Mapping Co., Inc. on November 2, 2005.



ORIGINAL STAMP IN GREEN

Description prepared by:

A handwritten signature in black ink, appearing to read 'J. Lee', written over the typed name and title.

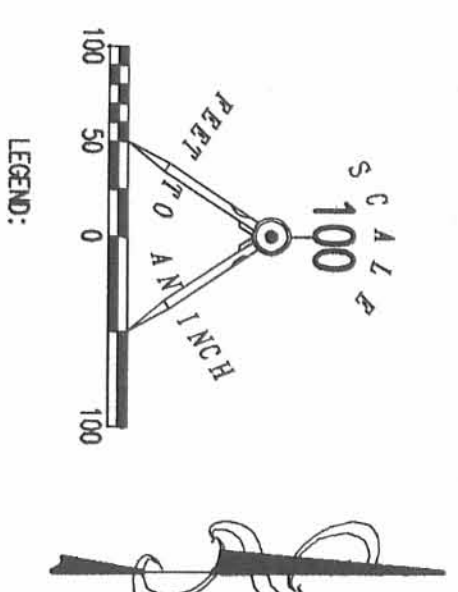
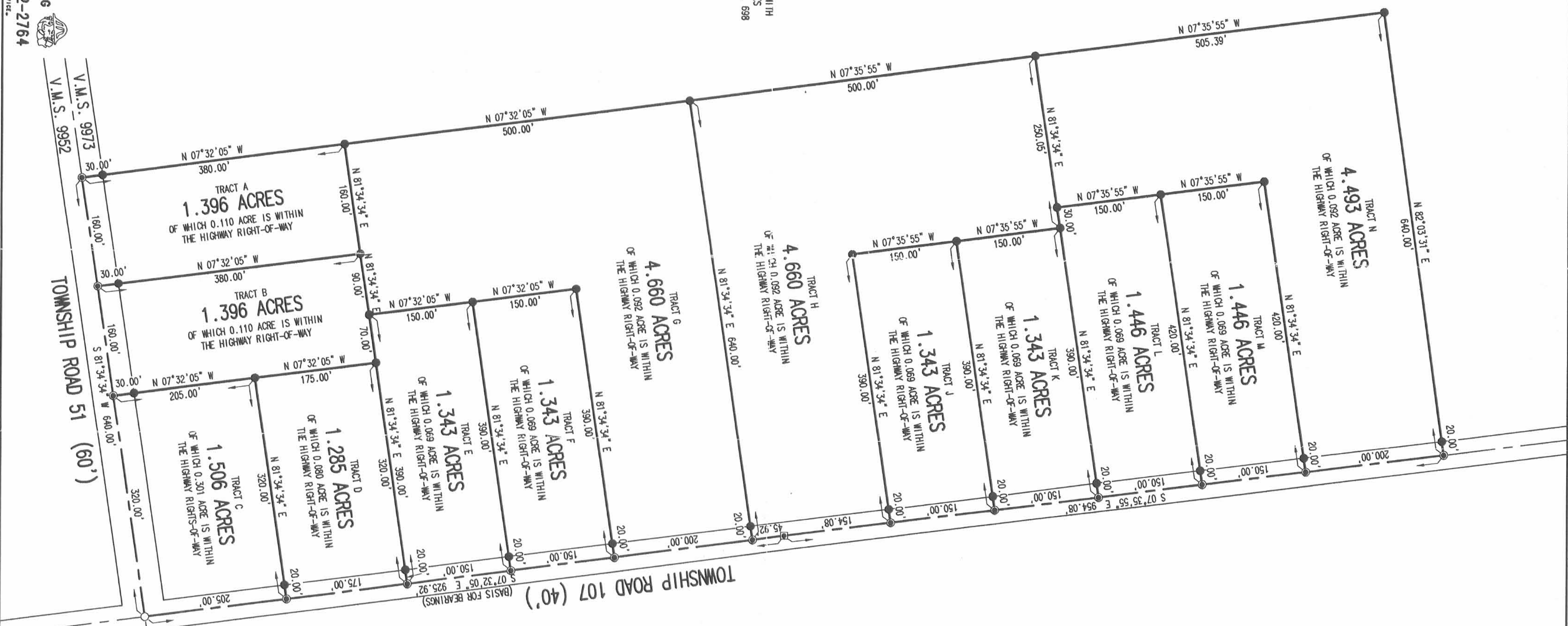
Jeffrey I. Lee
Professional Surveyor 6359
November 2, 2005

L-4123

INDEXED ON FILE
6655 4D-13

SAMUEL J. SMITH
110.9 ACRES
O.R. 256, PG. 698

2 WORKING DAYS
BEFORE YOU DIG
CALL TOLL FREE 800-362-2764
OHIO UTILITIES PROTECTION SERVICE



**SURVEY OF THIRTEEN TRACTS
OUT OF THE
SAMUEL J. SMITH
110.9 ACRE TRACT
OFFICIAL RECORD 256, PAGE 698
VIRGINIA MILITARY SURVEY 9973
RICHLAND TOWNSHIP
LOGAN COUNTY, OHIO**

SURVEYED BY:

JEFFREY T. LEE
PROFESSIONAL SURVEYOR 6359
NOVEMBER 2, 2005



LEE SURVEYING & MAPPING CO., INC.
117 North Meddinger Street
Bellefontaine, Ohio 43111
(937) 593-7335
KSR D1105 4123095-2 4123105.TXT L-4123-2

REC'D 2-23-07 SMJ OK

Lee Surveying and Mapping Co., Inc.

Land Surveys • Topography • Subdivisions • Construction Layout

117 N. Madriver St.
Bellefontaine OH 43311



Phone: (937) 593-7335
Fax: (937) 593-7444

SMITH 20.029 ACRES

Lying in Virginia Military Survey 9973, Richland Township, Logan County, Ohio.

Being 20.029 acres out of the Samuel J. Smith original 110.9 acre tract as deeded and described in Official Record 256, Page 698 of the Logan County Records of Deeds and being more particularly described as follows:

Commencing on a railroad spike found on the north line of Virginia Military Survey 9973 at the intersection of center-lines of Ohio Route 273 and Township Road 107.

THENCE, with the center-line of Township Road 107 (40 feet wide), S 8°-28'-52"E, a distance of 2147.47 feet to a 3/4 inch square iron bar found at the TRUE POINT OF BEGINNING.

THENCE, with the center-line of Township Road 107, the following two courses:

S 8°-28'-52"E, a distance of 552.01 feet to a 5/8 inch iron rod found.

S 7°-35'-55"E, a distance of 83.81 feet to a MAG nail found.

THENCE, with the north line of the Equine Country Estates, LLC, 7.385 acre tract (O.R. 836, Pg. 206, Parcel No. IV) and the north line extended, S 82°-03'-31"W, a distance of 800.00 feet to a 5/8 inch iron rod set, passing a 5/8 inch iron rod found at 20.00 feet.

THENCE, N 46°-26'-57"W, a distance of 350.00 feet to a 5/8 inch iron rod set.

THENCE, N 10°-31'-30"W, a distance of 550.00 feet to a point, referenced by a 5/8 inch iron rod found N 50°-18'-47"W, a distance of 14.00 feet.

THENCE, with the east line of the David Shoots Laughlin, Trustee, 10.912 acre tract (O.R. 801, Pg. 549), N 39°-03'-08"E, a distance of 297.60 feet to a point, referenced by a 5/8 inch iron rod found S 81°-40'-31"W, a distance of 16.00 feet.

THENCE, with the south line of the David Shoots Laughlin, Trustee, 62.26 acre tract (O.R. 338, Pg. 19), N 81°-40'-31"E, a distance of 486.67 feet to a 5/8 inch iron rod set.

THENCE, with the lines of the Lucas W. McCarren 3 acre tract (O.R. 375, Pg. 33), the following two courses:

S 8°-28'-52"E, a distance of 396.00 feet to a 5/8 inch iron rod set.

N 81°-40'-31"E, 330.00 feet to the point of beginning, passing a 5/8 inch iron rod set at 310.00 feet.

Containing 20.029 acres, of which 0.292 acre is within the highway right-of-way.

The basis for bearings is the center-line of Township Road 107, being S 8°-28'-52"E, and all other bearings are from angles and distances measured in a field survey by Lee Surveying and Mapping Co., Inc. on February 20, 2007. The northwesterly line of the above described tract is not intended to follow the center-line of the Great Miami River.



ORIGINAL STAMP IN GREEN

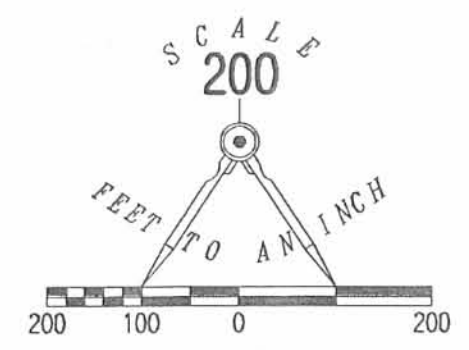
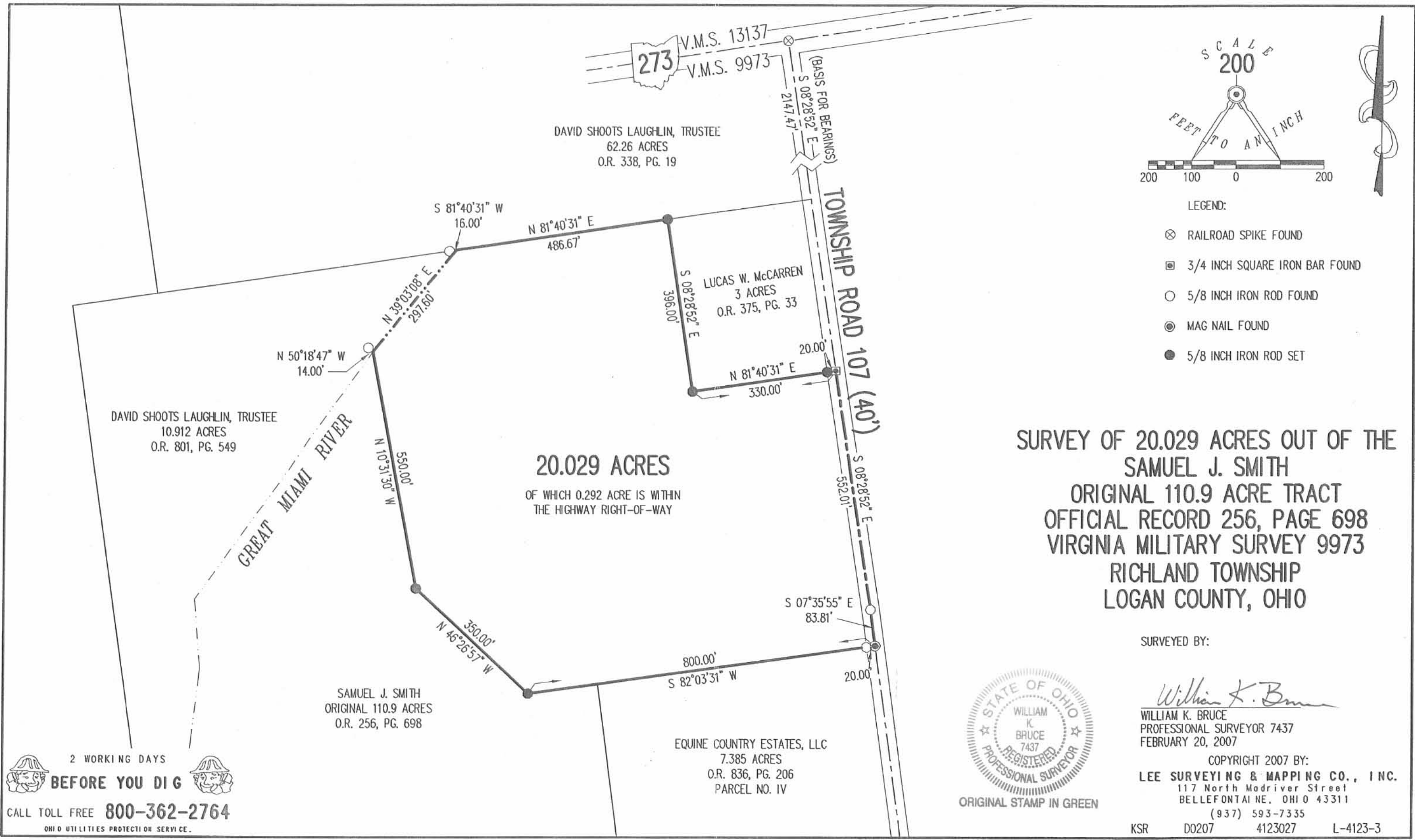
Description prepared by:

William K. Bruce
Professional Surveyor 7437
February 21, 2007



4123027

REC'D 2-23-07 SMJ OK



SURVEY OF 20.029 ACRES OUT OF THE
SAMUEL J. SMITH
ORIGINAL 110.9 ACRE TRACT
OFFICIAL RECORD 256, PAGE 698
VIRGINIA MILITARY SURVEY 9973
RICHLAND TOWNSHIP
LOGAN COUNTY, OHIO

SURVEYED BY:

William K. Bruce

WILLIAM K. BRUCE
PROFESSIONAL SURVEYOR 7437
FEBRUARY 20, 2007



ORIGINAL STAMP IN GREEN

COPYRIGHT 2007 BY:
LEE SURVEYING & MAPPING CO., INC.
117 North Madriver Street
BELLEFONTAINE, OHIO 43311
(937) 593-7335

KSR D0207 4123027 L-4123-3

2 WORKING DAYS
BEFORE YOU DIG
CALL TOLL FREE 800-362-2764
OHIO UTILITIES PROTECTION SERVICE.

INDEXED ON MAP
6655

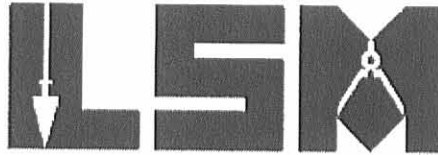
SP

REC'D 6-25-08 SMY OK

Lee Surveying and Mapping Co., Inc.

Land Surveys • Topography • Subdivisions • Construction Layout

117 N. Madriver St.
Bellefontaine OH 43311



Phone: (937) 593-7335
Fax: (937) 593-7444

SMITH 52.085 ACRES

Lying in Virginia Military Survey 9973, Richland Township, Logan County, Ohio.

Being all of the remainder of the Samuel J. Smith original 110.9 acre tract as deeded and described in Official Record 256, Page 698 in the Logan County Records of Deeds and being more particularly described as follows:

Commencing at a 5/8 inch iron rod found on the south line of Virginia Military Survey 9973 at the intersection of center-lines of Township Road 107 (40 feet wide) and Township Road 51 (60 feet wide).

THENCE, with the south line of Virginia Military Survey 9973 and the center-line of Township Road 51, S 81°-34'-34"W, a distance of 640.00 feet to a MAG nail found at the TRUE POINT OF BEGINNING.

THENCE, with the south line of Virginia Military Survey 9973 and the center-line of Township Road 51, S 81°-34'-34"W, a distance of 1044.95 feet to a railroad spike set.

THENCE, with the east line of the David Warren Liles and Sharon S. Liles 1.00 acre tract (Vol. 373, Pg. 628) and the east line of the David W. Liles 124.725 acre tract, (O.R. 303, Pg. 14, Tract I), N 8°-15'-21"W, a distance of 1322.16 feet to a point, passing a 1/2 inch iron rod found at 30.00 feet, referenced by a 5/8 inch iron rod found N 8°-15'-21"W, a distance of 16.00 feet.

THENCE, with the lines of the David Shoots Laughlin, Trustee 10.912 acre tract (O.R. 801, Pg. 549), the following six courses:

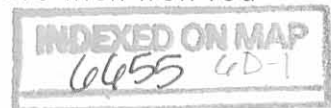
S 62°-53'-39"E, a distance of 36.24 feet to a point referenced by a 5/8 inch iron rod found N 1°-17'-49"W, a distance of 14.00 feet.

N 53°-42'-00"E, a distance of 24.41 feet to a 5/8 inch iron rod found.

N 2°-04'-27"W, a distance of 448.73 feet to a point referenced by a 5/8 inch iron rod found N 88°-13'-28"W, a distance of 14.01 feet.

N 6°-30'-52"E, a distance of 306.30 feet to a point referenced by a 5/8 inch iron rod found N 88°-37'-27"W, a distance of 23.04 feet.

N 4°-40'-12"W, a distance of 155.94 feet to a point referenced by a 5/8 inch iron rod found N 73°-11'-27"W, a distance of 16.91 feet.



Lee Surveying and Mapping Co., Inc.

Land Surveys • Topography • Subdivisions • Construction Layout

117 N. Madriver St.
Bellefontaine OH 43311



Phone: (937) 593-7335
Fax: (937) 593-7444

N 35°-30'-55"E, a distance of 696.91 feet to a point referenced by a 5/8 inch iron rod found N 50°-18'-54"W, a distance of 14.00 feet.

THENCE, with the lines of the Equine Country Estates, LLC 20.029 acre tract (O.R. 871, Pg. 568), the following three courses:

S 10°-31'-30"E, a distance of 550.00 feet to a 5/8 inch iron rod found.

S 46°-26'-57"E, a distance of 350.00 feet to a 5/8 inch iron rod found.

N 82°-03'-31"E, a distance of 160.00 feet to a 5/8 inch iron rod found.

THENCE, with the west lines of the Equine Country Estates LLC., 7.385 acre tract, 7.346 acre tract, 7.346 acre tract and 5.583 acre tract, (O.R. 836, Page 206, Parcel numbers IV, III, II and I), S 7°-34'-08"E, a distance of 1885.39 feet to the point of beginning, passing a 5/8 inch iron rod found at 1855.39 feet.

Containing 52.085 acres of which 0.720 acre is within the highway right-of-way.

The basis for bearings is the center-line of Township Road 51, being S 81°-34'-34"W, and all other bearings are from angles and distances measured in a field survey by Lee Surveying and Mapping Co., Inc. on June 24, 2008.



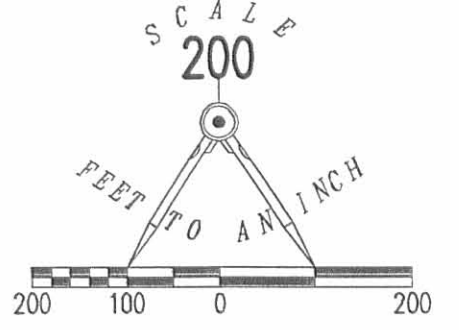
ORIGINAL STAMP IN GREEN

Description prepared by:

William K. Bruce
Professional Surveyor 7437
June 24, 2008

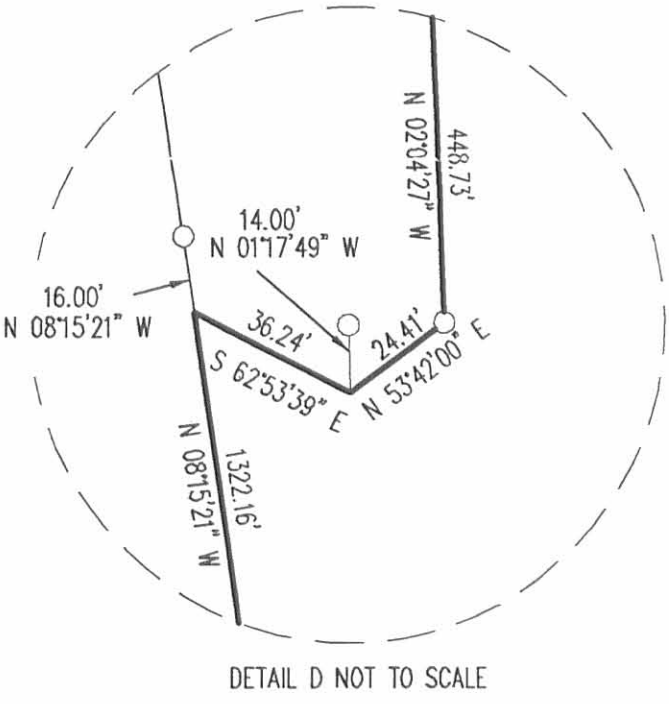
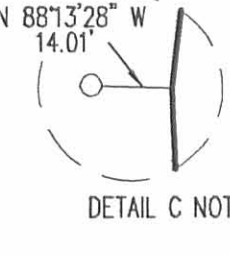
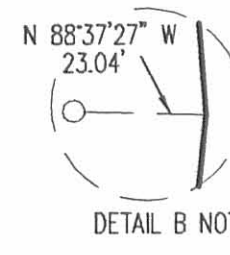
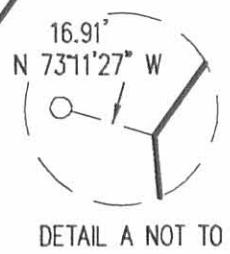
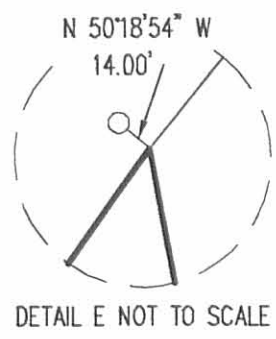
L-4123068





LEGEND

- 5/8 INCH IRON ROD SET
- 5/8 INCH IRON ROD FOUND
- 1/2 IRON ROD FOUND
- ⊙ RAILROAD SPIKE SET
- ⊙ MAG NAIL FOUND



A RETRACEMENT SURVEY OF THE
 REMAINDER OF THE SAMUEL J. SMITH
 ORIGINAL 110.9 ACRE TRACT
 OFFICIAL RECORD 256, PAGE 698
 VIRGINIA MILITARY SURVEY 9973
 RICHLAND TOWNSHIP
 LOGAN COUNTY, OHIO



SURVEYED BY:
William K. Bruce
 WILLIAM K. BRUCE
 PROFESSIONAL SURVEYOR 7437
 JUNE 23, 2008

COPYRIGHT 2008 BY:
LEE SURVEYING & MAPPING CO., INC.
 117 North Madriver Street
 BELLEFONTAINE, OHIO 43311
 (937) 593-7335
 surveys@lsmcinc.us
 ADW D0608 4123068 L-4123068-2

INDEXED ON MAP
 6655 GP

Lee Surveying and Mapping Co., Inc.

Land Surveys • Topography • Subdivisions • Construction Layout

117 N. Madriver St.
Bellefontaine OH 43311



Phone: (937) 593-7335
Fax: (937) 593-7444
surveys@lsminc.us

STRATH YARD FARM LLC 4.203 ACRES

Lying in Virginia Military Survey 9973, Richland Township, Logan County, Ohio.

Being out of the Strath Yard Farm LLC 350.048 acre tract as deeded and described in Official Record 950, Page 427, Parcel I of the Logan County Records of Deeds and being more particularly described as follows:

Commencing at a railroad spike found on the south line of Virginia Military Survey 13137 at the intersection of center-lines of Ohio Route 273 (60 feet wide) and Township Road 107 (40 feet wide).

THENCE, with the center-line of Township Road 107, S 07°-27'-49"E, a distance of 1349.14 feet to a MAG nail set at the TRUE POINT OF BEGINNING.

THENCE, with the center-line of Township Road 107, S 07°-27'-49"E, a distance of 403.00 feet to a MAG spike found.

THENCE, with the north line of the Lucas W. McCarren 3 acre tract (O.R. 375, Pg. 33) and the north line of the Lucas W. McCarren 20.029 acre tract (O.R. 921, Pg. 382), S 82°-43'-20"W, a distance of 816.75 feet to a point in the Great Miami River, passing a 5/8 inch iron rod set at 20.00 feet and referenced by a 5/8 inch iron rod found that bears S 84°-06'-12"W a distance of 16.00.

THENCE, N 53°-18'-55"E, a distance of 751.43 feet to a point in the Great Miami River referenced by a 5/8 inch iron rod set that bears S 43°-59'-33"E, a distance of 15.93 feet.

THENCE, N 70°-46'-19"E, a distance of 164.39 feet to the point of beginning.

Containing 4.203 acres, of which 0.184 acre is within the highway right-of-way.

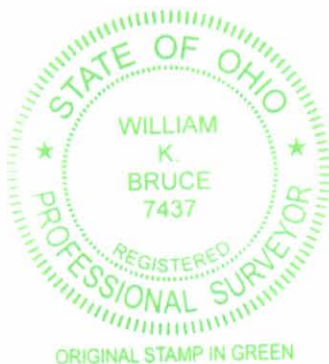
Property is subject to any and all previous easements and rights-of-way of record.

It is not intended that the westerly lines of this tract follow the center-line of the Great Miami River.

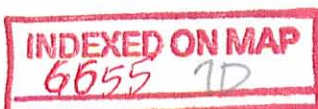
The basis for bearings is the center-line of Township Road 107, being S 07°-27'-49"E, and all other bearings are from angles and distances measured in a field survey by Lee Surveying and Mapping Co., Inc. on October 19, 2011.

Description prepared by:

William K. Bruce
Professional Surveyor 7437
October 19, 2011



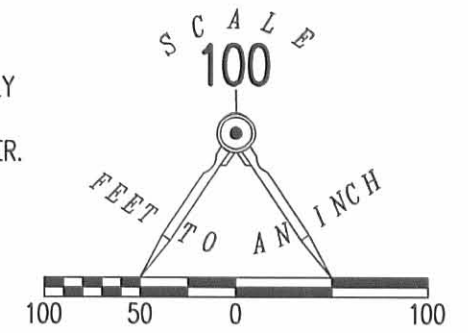
L-4762



REC'D 10-21-11 SMY/OK

V.M.S. 13137
V.M.S. 9973
273
(60')

NOTE:
IT IS NOT INTENDED THAT THE WESTERLY
LINES OF THIS TRACT FOLLOW THE
CENTER-LINE OF THE GREAT MIAMI RIVER.



LEGEND

- 5/8 INCH IRON ROD SET WITH PLASTIC I.D. CAP STAMPED "LSM 7437"
- 5/8 INCH IRON ROD FOUND
- ⊙ MAG NAIL SET
- ⊗ RAILROAD SPIKE FOUND
- MAG SPIKE FOUND

STRATH YARD FARM LLC
350.048 ACRE TRACT
O.R. 950, PG. 427
PARCEL I

15.93'
S 43°59'33" E

N 70°46'19" E
164.39'

BASIS FOR BEARINGS
S 07°27'49" E
1349.14'

TOWNSHIP ROAD 107 (40')

S 07°27'49" E
403.00'

GREAT MIAMI RIVER
N 53°18'55" E
751.43'

4.203 ACRES
OF WHICH 0.184 ACRE IS WITHIN THE HIGHWAY
RIGHT-OF-WAY.

SURVEY OF A 4.203 ACRE TRACT OUT OF THE
STRATH YARD FARM LLC
350.048 ACRE TRACT
OFFICIAL RECORD 950, PAGE 427, PARCEL I
VIRGINIA MILITARY SURVEY 9973
RICHLAND TOWNSHIP
LOGAN COUNTY, OHIO

SEE DETAIL

816.75'
S 82°43'20" W

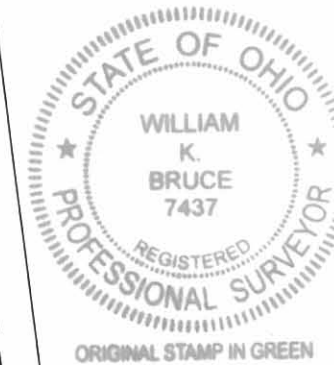
20.00'

LUCAS W. McCARREN
3 ACRE TRACT
O.R. 375, PG. 33

LUCAS W. McCARREN
20.029 ACRE TRACT
O.R. 921, PG. 382

16.00'
S 84°06'12" W

DETAIL NOT TO SCALE



SURVEYED BY:

WILLIAM K. BRUCE
PROFESSIONAL SURVEYOR 7437
OCTOBER 19, 2011

COPYRIGHT 2011 BY:
LEE SURVEYING & MAPPING CO., INC.
117 North Madriver Street
BELLEFONTAINE, OHIO 43311
(937) 593-7335
WWW.LSMINC.US
surveys@lsminc.us

ADW D1011 47621011 L-4762-3

2 WORKING DAYS

BEFORE YOU DIG

CALL TOLL FREE 800-362-2764

OHIO UTILITIES PROTECTION SERVICE

INDEXED ON MAP
6655 7P

4-19-16

Lee Surveying and Mapping Co., Inc.



Land Surveys • Topography • Subdivisions • Construction Layout

117 N. Madriver St.
Bellefontaine OH 43311



Phone: (937) 593-7335
Fax: (937) 593-7444
surveys@lsminc.us

HENRY 0.147 ACRE

Lying in Virginia Military Survey 9973, Richland Township, Logan County, Ohio.

Being out of the Brian E. Henry and Sally Henry 1.285 acre tract as deeded and described in Official Record 1198, Page 753 of the Logan County Records of Deeds and being more particularly described as follows:

Commencing on a 5/8 inch iron rod found on the south line of Virginia Military Survey 9973 on the intersection of the center-lines of Township Road 51 and Township Road 107.

THENCE, with the center-line of Township Road 107 (40 feet wide), N 07°-32'-05"W, a distance of 380.00 feet to a MAG nail found.

THENCE, with the south line of the Matthias L. Byler and Deborah R. Byler 1.343 acre tract (O.R. 1189, Pg. 127, Parcel I), S 81°-34'-34"W, a distance of 283.40 feet to a 5/8 inch iron rod set at the TRUE POINT OF BEGINNING, passing a 5/8 inch iron rod found at 20.00 feet.

THENCE, S 07°-32'-05"E, a distance of 175.00 feet to a 5/8 inch iron rod set.

THENCE, with the lines of the Matthias L. Byler and Deborah R. Byler 4.298 acre tract (O.R. 1168, Pg. 931, Tract I), the following two courses:

S 81°-34'-34"W, a distance of 36.60 feet to a 5/8 inch iron rod found.

N 07°-32'-05"W, a distance of 175.00 feet to a 5/8 inch iron rod found.

THENCE, with the south line of the aforesaid 1.343 acre tract, N 81°-34'-34"E, a distance of 36.60 feet to the point of beginning.

Containing 0.147 acre.

Property is subject to any and all previous easements and rights-of-way of record.

This parcel is to be attached to an adjoining tract of land and is not to be used as a separate and independent parcel.

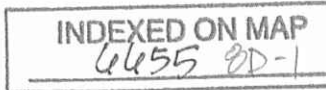
The basis for bearings is the center-line of Township Road 107, being N 07°-32'-05"W, and all other bearings are from angles and distances measured in a field survey by Lee Surveying and Mapping Co., Inc. on March 12, 2016

Description prepared by:

William K. Bruce
Professional Surveyor 7437
March 14, 2016



41230216REV



4-19-16

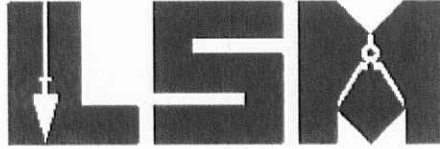
Lee Surveying and Mapping Co., Inc.



APPROVED

Land Surveys • Topography • Subdivisions • Construction Layout

117 N. Madriver St.
Bellefontaine OH 43311



Phone: (937) 593-7335
Fax: (937) 593-7444
surveys@lsmcinc.us

BYLER 0.147 ACRE

Lying in Virginia Military Survey 9973, Richland Township, Logan County, Ohio.

Being out of the Matthias L. Byler and Deborah R. Byler 1.343 acre tract as deeded and described in Official Record 1189, Page 127, Parcel I of the Logan County Records of Deeds and being more particularly described as follows:

Commencing on a 5/8 inch iron rod found on the south line of Virginia Military Survey 9973 on the intersection of the center-lines of Township Road 51 and Township Road 107.

THENCE, with the center-line of Township Road 107 (40 feet wide), N 07°-32'-05"W, a distance of 380.00 feet to a MAG nail found at the TRUE POINT OF BEGINNING.

THENCE, with the north line of the Brian E. Henry and Sally Henry 1.285 acre tract (O.R. 1198, Pg. 753), S 81°-34'-34"W, a distance of 283.40 feet to a 5/8 inch iron rod set, passing a 5/8 inch iron rod found at 20.00 feet.

THENCE, N 07°-32'-05"W, a distance of 22.60 feet to a 5/8 inch iron rod set.

THENCE, N 81°-34'-34"E, a distance of 283.40 feet to a MAG nail set on the center-line of Township Road 107, passing a 5/8 inch iron rod set at 263.40 feet.

THENCE, with the center-line of Township Road 107, S 07°-32'-05"E, a distance of 22.60 feet to the point of beginning.

Containing 0.147 acre, of which 0.010 acre is within the highway right-of-way.

Property is subject to any and all previous easements and rights-of-way of record.

This parcel is to be attached to an adjoining tract of land and is not to be used as a separate and independent parcel.

The basis for bearings is the center-line of Township Road 107, being N 07°-32'-05"W, and all other bearings are from angles and distances measured in a field survey by Lee Surveying and Mapping Co., Inc. on March 12, 2016, revised April 8, 2016.

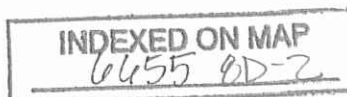


ORIGINAL STAMP IN GREEN

Description prepared by:

William K. Bruce
Professional Surveyor 7437
April 11, 2016

41230216REV



4-19-16

APPROVED

MATTHIAS L. BYLER AND
DEBORAH R. BYLER
1.343 ACRES
O.R. 1189, PG. 127
PARCEL I

0.147 ACRE

OF WHICH 0.010 ACRE IS WITHIN
THE HIGHWAY RIGHT-OF-WAY

N 07°32'05" W
22.60'

N 81°34'34" E 283.40'

S 81°34'34" W 320.00'
263.40'

22.60'

20.00'

20.00'

S 07°32'05" E
22.60'

TOWNSHIP ROAD 107 (40')

(BASIS FOR BEARINGS)
N 07°32'05" W
380.00'

BRIAN E. HENRY
AND SALLY HENRY
1.285 ACRES
O.R. 1198, PG. 753

0.147 ACRE

N 07°32'05" W
175.00'

S 07°32'05" E
175.00'

36.60'

S 81°34'34" W

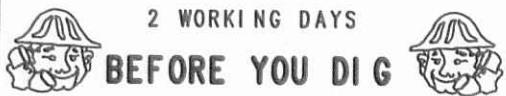
MATTHIAS L. BYLER AND
DEBORAH R. BYLER
4.298 ACRES
O.R. 1168, PG. 931
TRACT I

NOTE:

BOTH PARCELS ARE TO BE ATTACHED TO ADJOINING TRACTS
OF LAND AND ARE NOT TO BE USED AS SEPARATE AND
INDEPENDENT PARCELS.

THIS SURVEY WAS PREPARED IN THE ABSENCE OF
A COMPLETE AND ACCURATE TITLE SEARCH AND
DOES NOT GUARANTEE TITLE.

2 WORKING DAYS



CALL TOLL FREE 800-362-2764

OHIO UTILITIES PROTECTION SERVICE

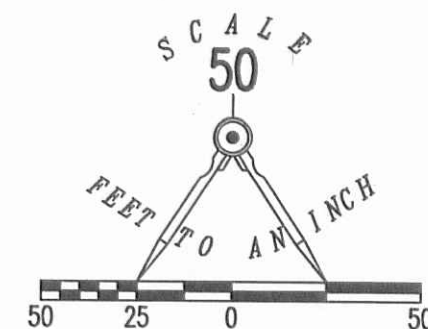
V.M.S. 9973

TOWNSHIP ROAD 51 (60')

V.M.S. 9952

LEGEND:

- ⊙ MAG NAIL FOUND
- MAG NAIL SET
- 5/8 INCH IRON ROD FOUND
- 5/8 INCH IRON ROD SET WITH PLASTIC I.D. CAP STAMPED "LSM 7437"



**SURVEY OF 0.147 ACRE OUT OF THE
BRIAN E. HENRY
AND SALLY HENRY
1.285 ACRE TRACT
OFFICIAL RECORD 1198, PAGE 753
AND SURVEY OF 0.147 ACRE OUT OF THE
MATTHIAS L. BYLER AND
DEBORAH R. BYLER
1.343 ACRE TRACT
OFFICIAL RECORD 1189, PAGE 127
PARCEL I
VIRGINIA MILITARY SURVEY 9973
RICHLAND TOWNSHIP
LOGAN COUNTY, OHIO**

SURVEYED BY:

William K. Bruce

WILLIAM K. BRUCE
PROFESSIONAL SURVEYOR 7437
MARCH 12, 2016
REVISED APRIL 8, 2016



ORIGINAL STAMP IN GREEN

COPYRIGHT 2016 BY:
LEE SURVEYING & MAPPING CO., INC.
117 North Madriver Street
BELLEFONTAINE, OHIO 43311
(937) 593-7335
WWW.LSMINC.US
surveys@lsminc.us

KSS D0216 41230216REV L-4123-3

INDEXED ON MAP

6655 8P