

FB 708

Rd. No. 97

Richland Twp. in New Richland

15+00 P.O.T. PK nail in crossing timber .7" south of south rail.

13+41.10 Set 1" ϕ iron, E of Rd. #97 and North line of Rail Road St.

10+52.14 P.O.T. PK nail

10+00 P.O.T. PK nail

6+84.70 E Walnut St, PK nail set

6+59.7 Fd. RR Spike @ 75' E!

5+60.9 Fd. Pipe @ 65' E!

5+44.3 Fd. Pipe @ 63' E!

5+00 P.O.T. PK nail

0+00 Set 5/8" ϕ re-bar, 1.66' East of RR Spike intersection of Main St. and Rd. #97

Rd. 97

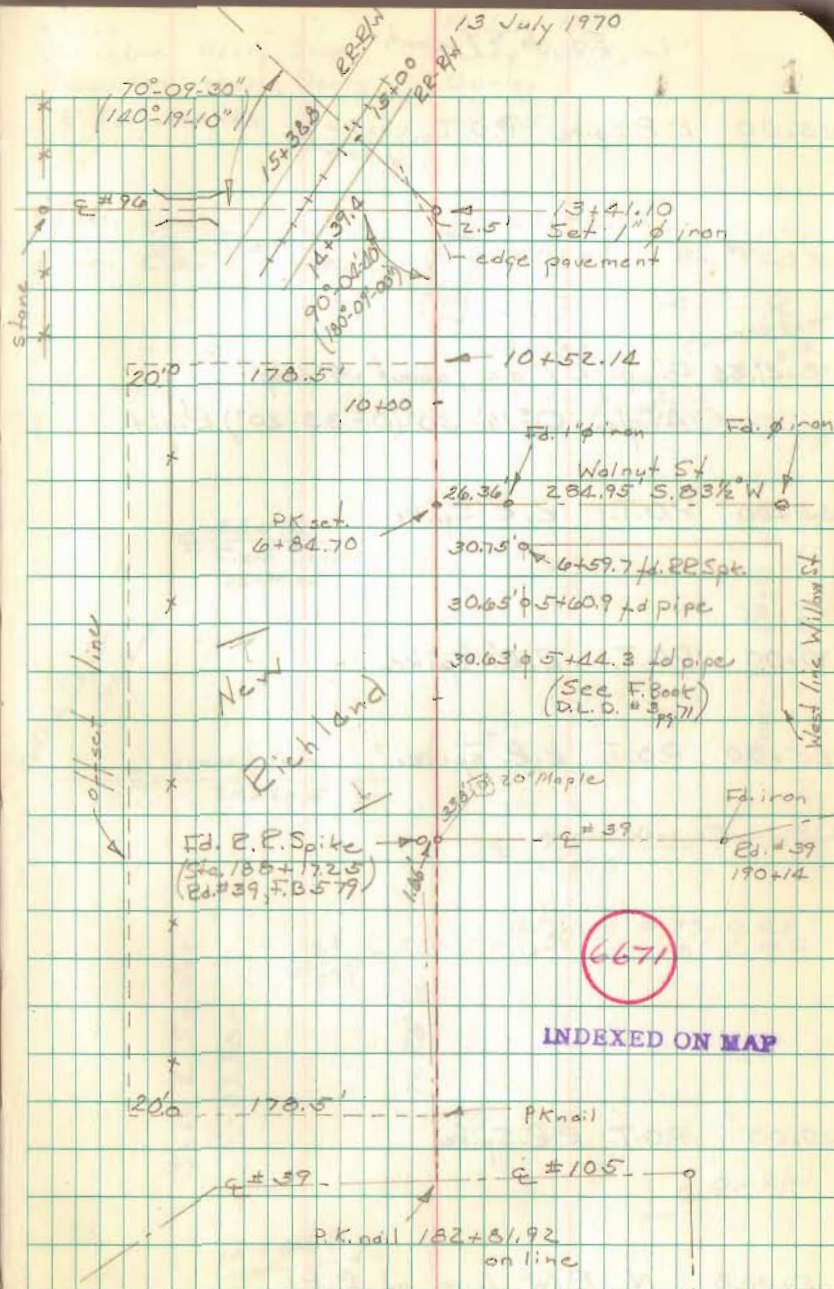
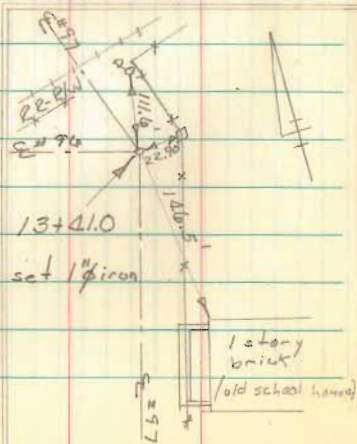
1930

Commissioner's Journal X/323

Designated S.H. 593

60' Right of Way

Sec. 0.00 to 3.20



FB 708

Ed. No. 97 cont.

45+00 R.R. Spike P.O.T.

38+41.56 Fd. pipe 1" dia., about .5' deep.
Angle $0^{\circ}16'50''$ ($0^{\circ}33'20''$) Right

35+00 P.O.T. R.R. Spike

30+00 P.O.T. R.R. spike

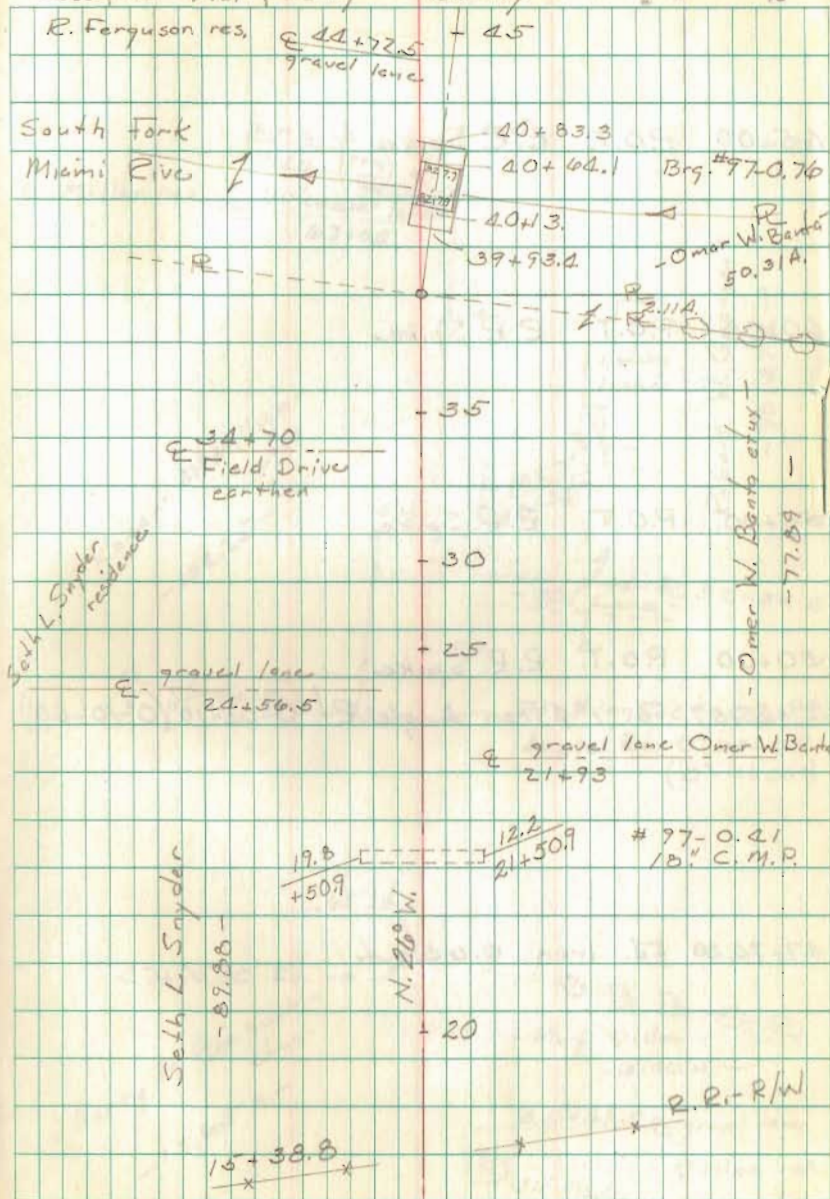
25+00 P.O.T. R.R. spike

20+00 P.O.T. R.R. Spike

15+38.8 N. R/W line of R.R.

Nichols
Brooks, Dave Henry, Steve
Dodson, Dan Prall, Denny

13 July 1970
Sunny humid, 85°
Gurley



FB 708

Rd. No. 97 cont.

65+00 P.O.T. R.R. Spike

60+00 P.O.T. R.R. Spike

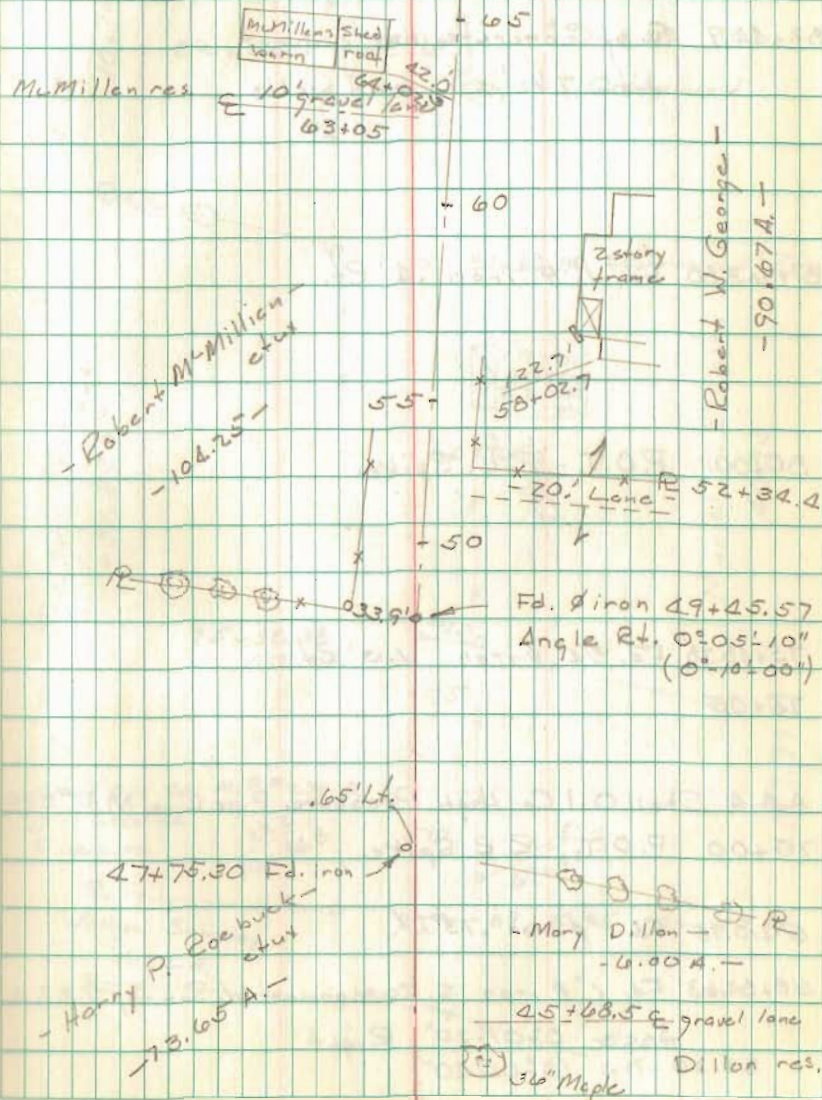
55+00 P.O.T. R.R. Spike

50+00 P.O.T. R.R. Spike

49+45.57 Fd. 1" ϕ iron Angle Rt. $0^{\circ}05'10''$ ($0^{\circ}10'00''$)

47+75.30 Fd. iron 0.65' Lt.

14 July 1970



FB 708

Ed. No. 97 cont.

82+46.9 E of concrete box culvert
with 7 1/2' x 1' end walls

81+63.80 Fd. 1" ϕ iron .4' Lt.

80+00 P.O.T. R.R. Spike

75+48.38 Fd. 3/4" ϕ iron .13' Lt.

75+00

A & A Shell Oil Co. High Pressure Pipe Line M.P. #239

70+00 P.O.T. R.R. Spike

69+10.95 Fd. 1" ϕ iron .13' Lt.

68+84.63 Fd. 1" ϕ iron S.E. corner W. Summay 1.22A.

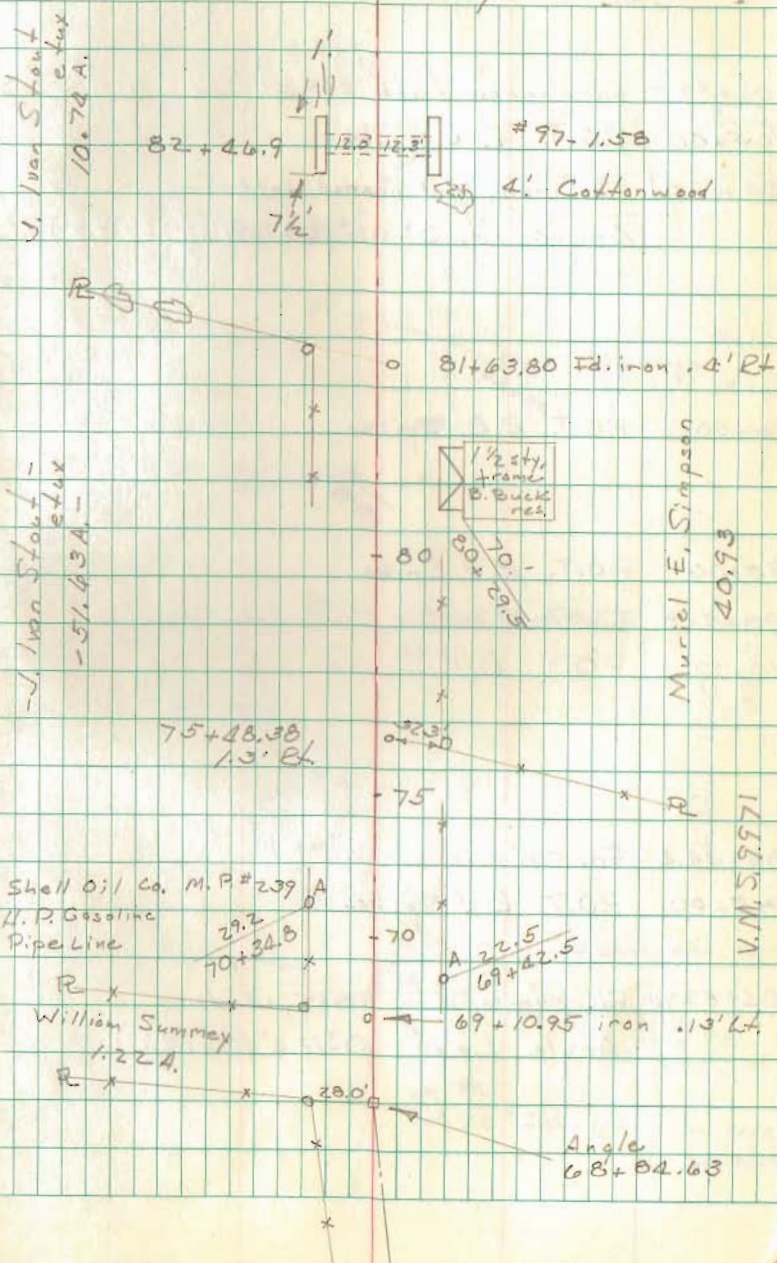
Angle 0° 01' 20" Right
(0° 02' 40")

Nichols
Brooks
Dodson

Henry
Drall

30 July 1970
82° - Rain/sunny
Gurley

4



FB 708

Rd. No. 97 cont.

106+59.5 Fd. Harrow tooth 2.3' Lt. (Sec. F. Bk. 575/76)

105+00 P.O.T. R.R. Spike

104+52.04 Fd. iron, 1" # headed bolt

Angle Lt. $0^{\circ}08'$ ($0^{\circ}15.9'$) ($0^{\circ}23.9'$)

100+00 P.O.T. R.R. Spike

95+00 P.O.T. R.R. Spike

90+41.8 Fd. 5/8" ϕ re-bar 1.04' Lt.

90+00 P.O.T. R.R. Spike

85+34.4 Fd. 5/8" ϕ re-bar 1.4' Lt.

85+00 P.O.T. R.R. Spike

84+57.70 Fd. stone with brick, .5' deep

Angle Left $0^{\circ}12.2'$ ($0^{\circ}24.2'$)

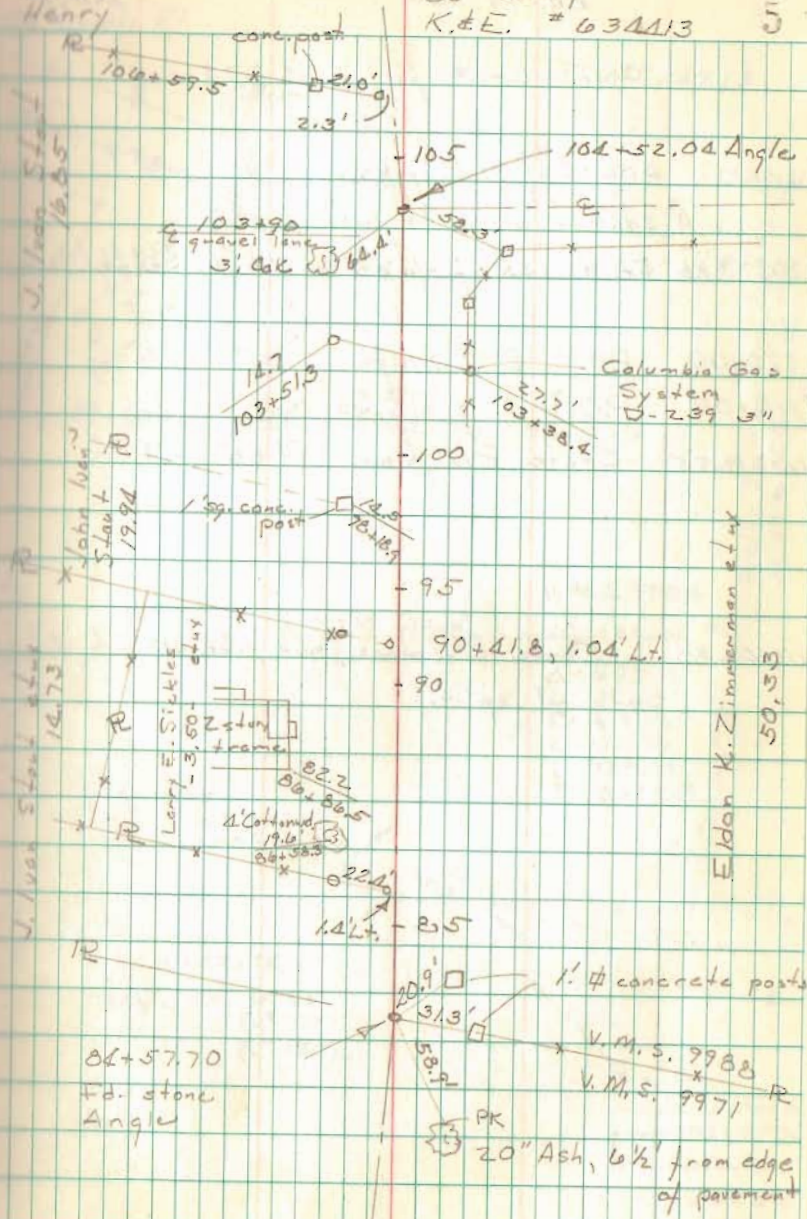
Nichols
Brooks
Henry

11 Aug. 1970

25° Sunny

K. & E. # 634413

5



FB 708

Rd. 97 cont.

Nichols
Brooks
Henry T
Prall

Plan L-13 for S. R. 273

125+00 P.O.T. Set R.R. Spike

"A" state E/W man to hub. = 560.7'

120+23.86 Fd. traces of old state / deep. Set hd. hub

120+00 P.O.T. R.R. Spike

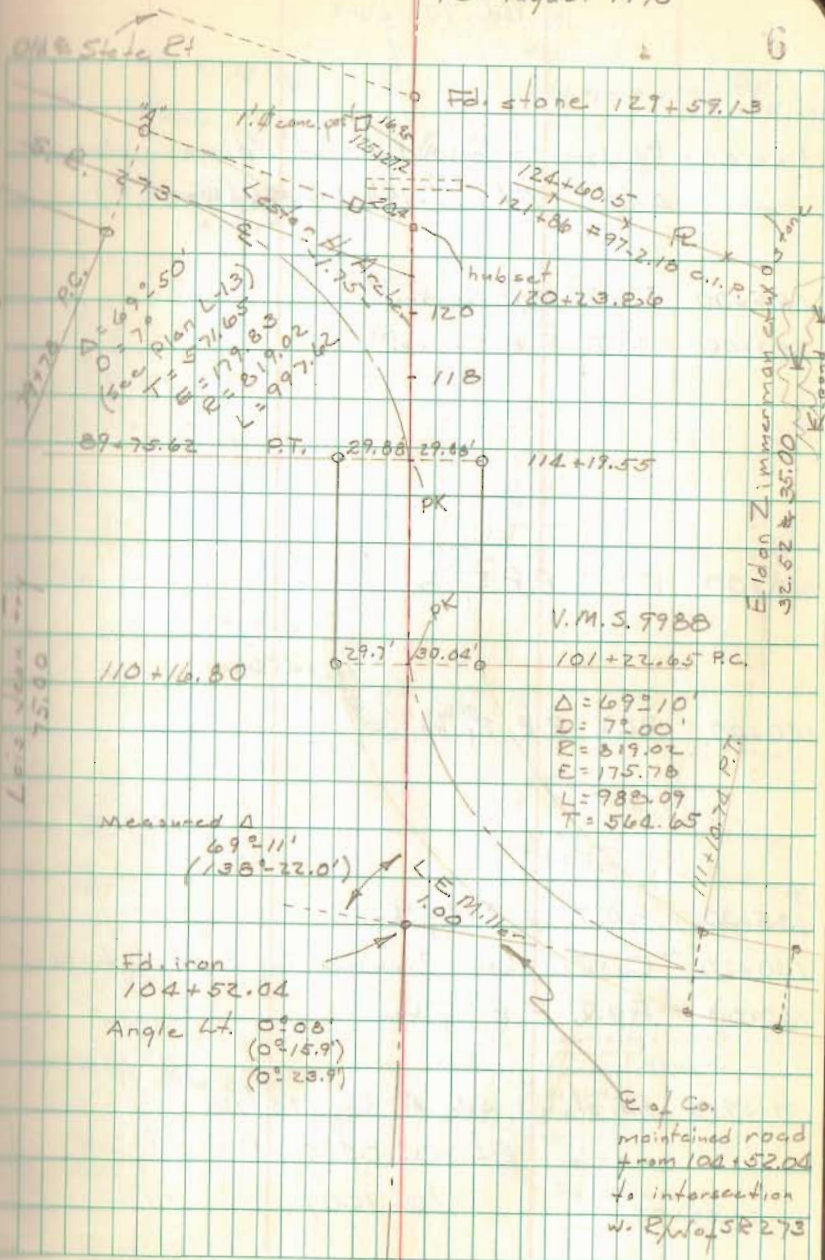
118+00 P.O.T. Set RR Spike

111+19.55 State E/W mans 29.88' Lt. & Rt.

110+16.80 State E/W mans., our line .17' Lt of original split.

13 August 1970

6



FB 708

Ed. 97 cont.

156+15.84 Fd. long PK nail & disk, set 1" iron in place of PK
 Angle Lt. $0^{\circ}-19.9'$ ($0^{\circ}-39.6'$) ($0^{\circ}-59.0'$)

155+00 P.O.T. R.R. Spike

150+00 P.O.T. R.R. Spike

145+00 P.O.T. R.R. Spike

140+00 P.O.T. R.R. Spike

135+00 P.O.T. R.R. Spike

130+20 Co. Rd. ends Richland Twp. Ed. 97 continues

130+00 P.O.T. R.R. Spike

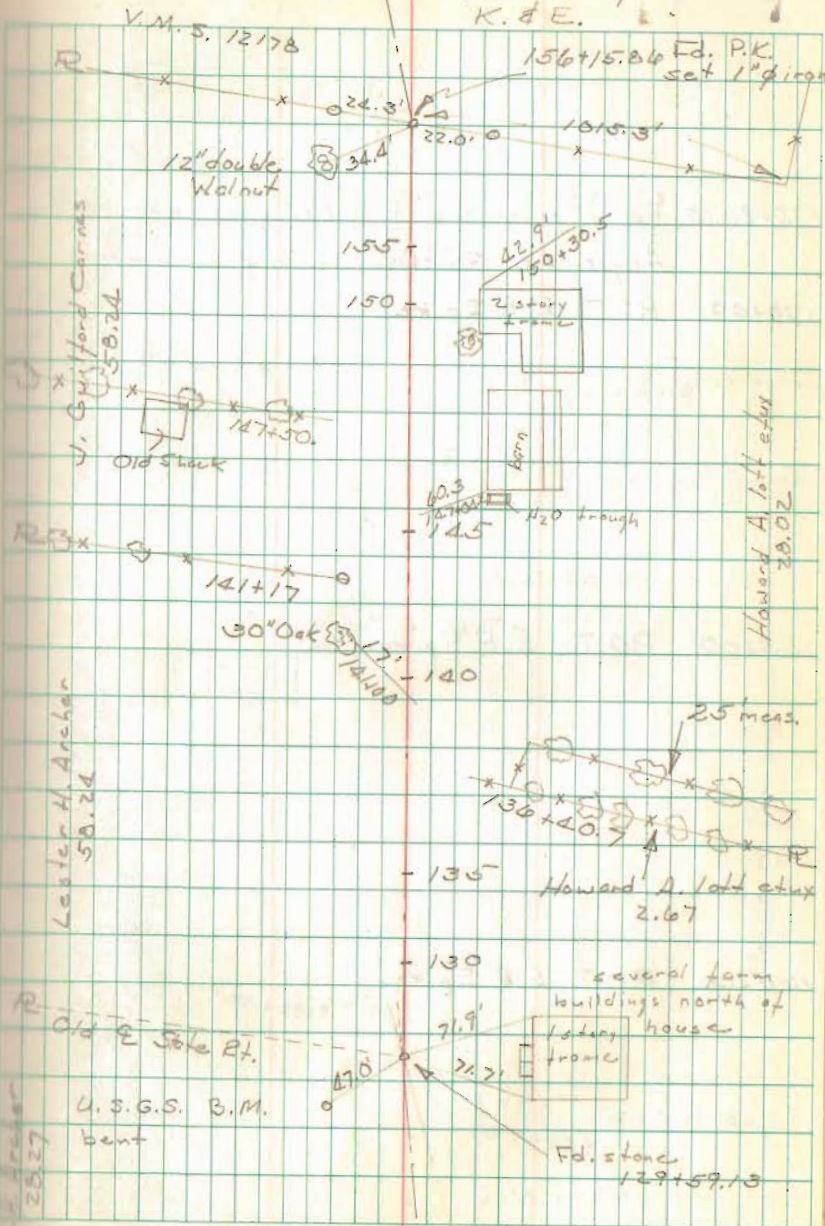
129+59.13 Fd. stone, See F.B. 575/76

Angle Rt. $0^{\circ}-04.9'$
 ($0^{\circ}-10.0'$)

13 August 1970

90° Sunny

K. & E.



Rd. # 97 cont.

FB 708

172+86.13 Fd, 1" pipe, see F.B. 575 pg 76

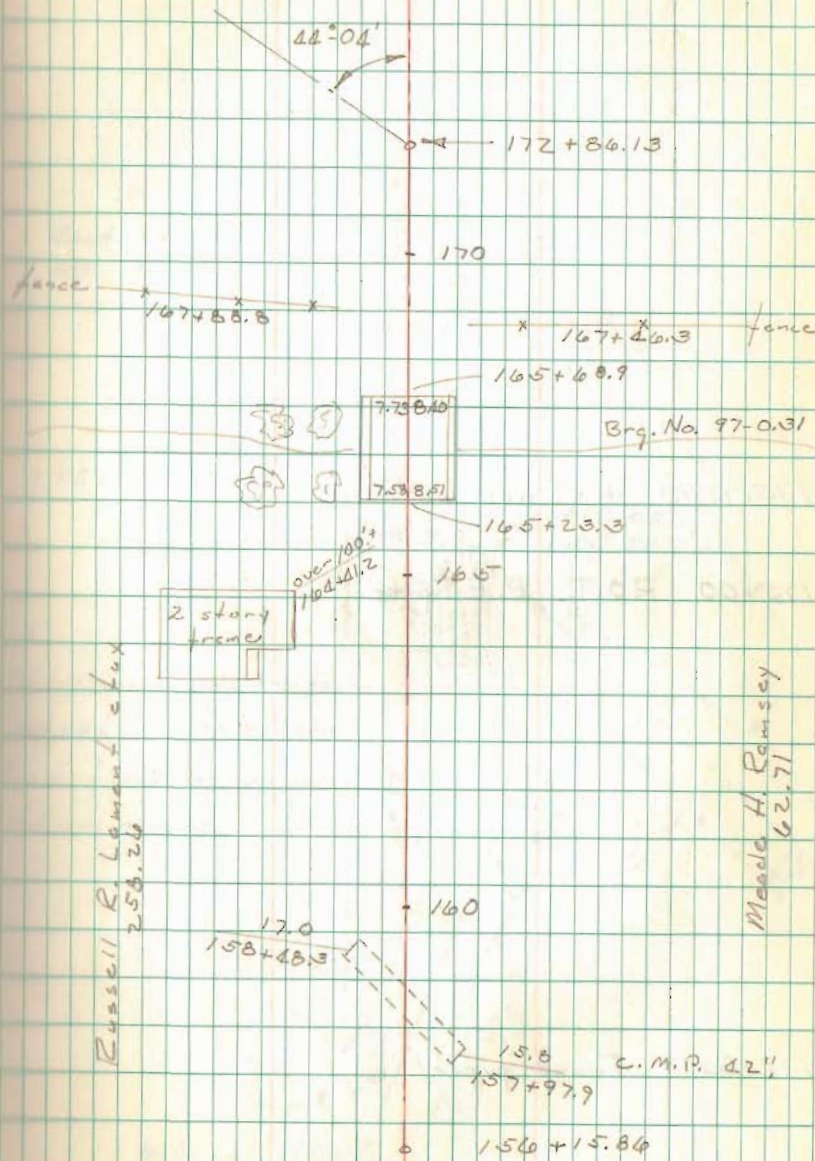
Angle Lt. $44^{\circ}04'$, angle from deeds.

170+00 P.O.T. R.R. Spike

165+00 P.O.T. R.R. Spike

160+00 P.O.T. R.R. Spike

88



FB 708

Rd. #97 cont.

175+75.90 P.K. nail set.

175+00 P.O.T. R.P. Spike

172+86.13 Found pipe

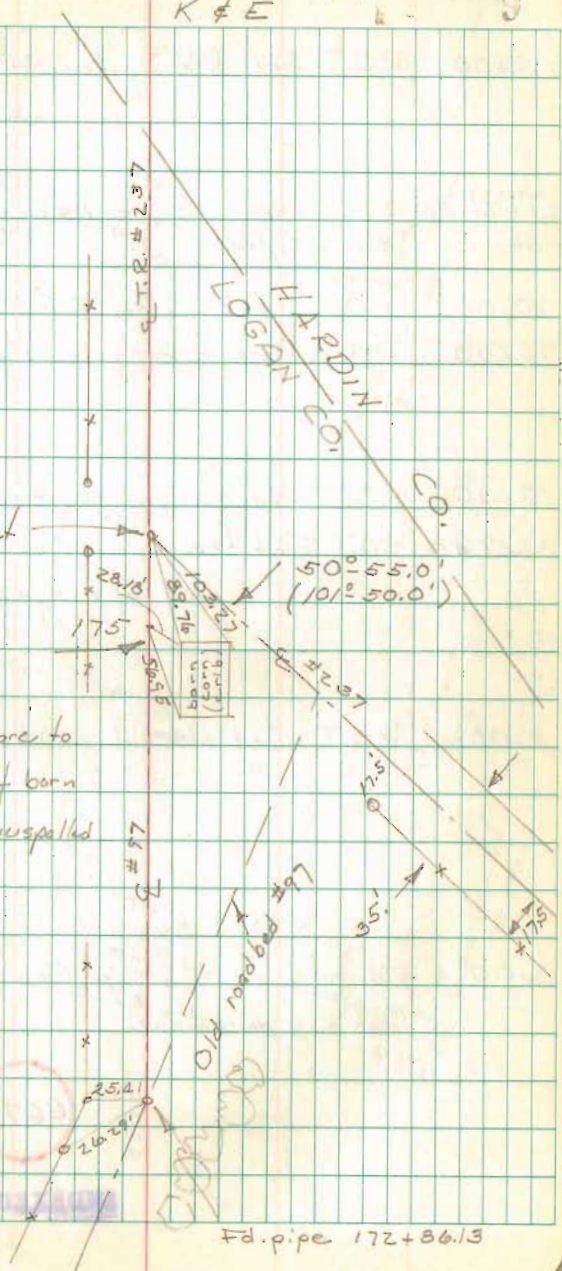
Nichols
Henry x
Prall

14 August 1970
90° hot Sunny
K & E

Road No. 297
60' R/W.

175+75.90 PK Set

Witnesses on barn are to
outside corners of barn
Corner foundation have spalled
and are indistinct.



Fd. pipe 172+86.13