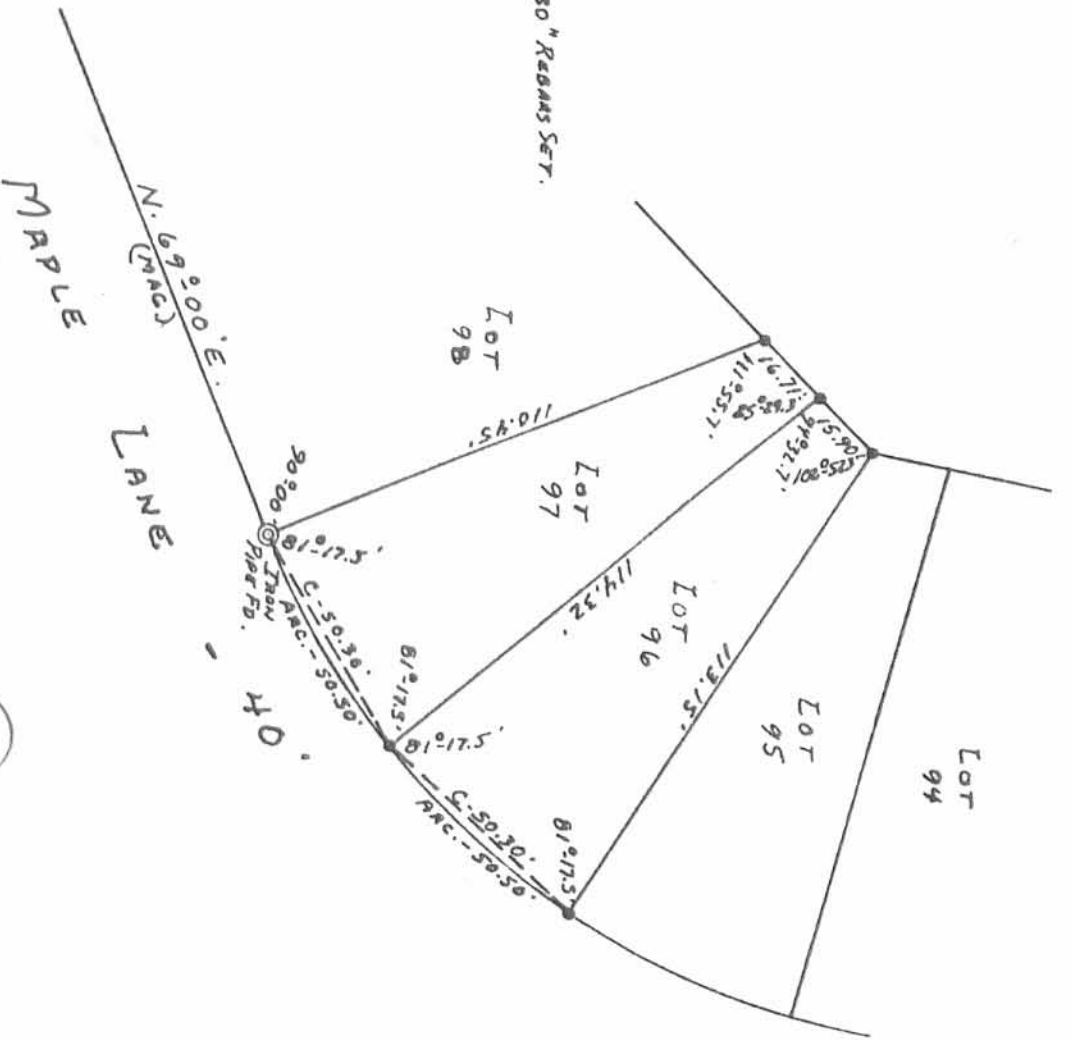




● - 5/8" x 30" REBAR SET.



SURVEYED AND PLATED BY:
 DANIEL E. GILBERT, P.S.
 REG. SUR. NO. 5402
 1041 N. MAIN ST.
 BELLEFONTAINE, OHIO 43311

INDEXED ON MAP

6798 2P

Lot No. 96
 FERNWOOD SUBDIVISION
 OF
 LONG ISLAND
 V.M.S. No. 13393
 RICHLAND TOWNSHIP
 LOGAN COUNTY, OHIO
 DECEMBER 18, 1982
 SCALE: 1" = 40'