

REID 3-3-08 SMY dk

# Lee Surveying and Mapping Co., Inc.

Land Surveys • Topography • Subdivisions • Construction Layout

117 N. Madriver St.  
Bellefontaine OH 43311



Phone: (937) 593-7335  
Fax: (937) 593-7444

## O'CONNOR'S FARMS, INC. 0.491 ACRE

Lying in Virginia Military Survey 9968, Richland Township, Logan County, Ohio.

Being all of the O'Connor's Farms, Inc., 0.472 acre tract as deeded and described in Official Record 193, Page 968, Tract I of the Logan County Records of Deeds and being more particularly described as follows:

Commencing on a 1-1/2 inch square iron bar found at an angle point in County Highway 254 at Station 52+58.50 (Logan County Engineer's Field Book 500, Page 11).

THENCE, with west boundary line of the O'Connor Farms, Inc., original 130 acre tract (Vol. 353, Pg. 663, Tract VI), S 9°-47'-40"E, a distance of 25.03 feet to a 5/8 inch iron rod set on the south right-of-way of County Highway 254 at the TRUE POINT OF BEGINNING.

THENCE, with the west line of the said original 130 acre tract, S 9°-47'-40"E, a distance of 157.05 feet to a 5/8 inch iron rod set.

THENCE, with the original deeded shore line of Indian Lake, the following three courses:

S 66°-11'-53"W, a distance of 208.00 feet to a point, referenced by a 5/8 inch iron rod set bearing N 9°-31'-32"W, a distance of 7.12 feet.

N 83°-57'-28"W, a distance of 25.65 feet to a point, referenced by a 5/8 inch iron rod set bearing N 35°-51'-29"E, a distance of 3.83 feet.

N 46°-08'-54"W, a distance of 6.42 feet to a point.

THENCE, with the easterly line of the Bay Village Association, Inc., 2.468 acre tract (O.R. 238, Pg. 751), the following two courses:

N 44°-52'-11"E, a distance of 83.71 feet to a 5/8 inch iron rod set, passing a 5/8 inch iron rod set at 8.86 feet.

N 31°-40'-26"E, a distance of 197.93 feet to a 5/8 inch iron rod set on the south right-of-way of County Highway 254.

THENCE, with the south right-of-way of County Highway 254 (60 feet wide northbound, 50 feet wide eastbound), N 82°-59'-18"E, a distance of 30.97 feet to the point of beginning.

Containing 0.491 acre.

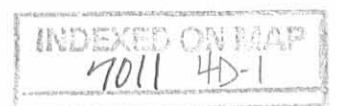
The basis for bearings is the north line of the State of Ohio, Department of Natural Resources 53 1/2 acre tract (O.R. 414, Pg. 832, Tract I), being S 82°-13'-54"W, and all other bearings are from angles and distances measured in a field survey by Lee Surveying and Mapping Co., Inc. on February 15, 2008.



ORIGINAL STAMP IN GREEN

Description prepared by:

William K. Bruce  
Professional Surveyor 7437  
February 18, 2008



4584018

REC'D 3-3-08 smjok

# Lee Surveying and Mapping Co., Inc.

Land Surveys • Topography • Subdivisions • Construction Layout

117 N. Madriver St.  
Bellefontaine OH 43311



Phone: (937) 593-7335  
Fax: (937) 593-7444

## INDIAN LAKE RESERVOIR LANDS 1.007 ACRES

Lying in Virginia Military Survey 9968, Richland Township, Logan County, Ohio.

Being out of the Indian Lake Reservoir Lands and being more particularly described as follows:

Commencing on a 1-1/2 inch square iron bar found at an angle point in County Highway 254 at Station 52+58.50 (Logan County Engineer's Field Book 500, Page 11).

THENCE, with the west boundary line of the O'Connor Farms, Inc., original 130 acre tract (Vol. 353, Pg. 663, Tract VI), S 9°-47'-40"E, a distance of 525.41 feet to a 5/8 inch iron rod set at the TRUE POINT OF BEGINNING, passing 5/8 inch iron rods set at 25.03 feet and 182.08 feet.

THENCE, with the west line of the said original 130 acre tract, S 9°-47'-40"E, a distance of 30.48 feet to a 5/8 inch iron rod set on the State Line.

THENCE, with the State Line, the following four courses:

S 64°-39'-11"W, a distance of 278.23 feet to a 2 inch metal pipe found.

N 20°-40'-36"W, a distance of 246.99 feet to a 2 inch metal pipe found.

S 67°-24'-19"W, a distance of 42.58 feet to a 5/8 inch iron rod set.

N 88°-56'-33"W, a distance of 89.06 feet to a point on the shore line of Indian Lake, passing a 5/8 inch iron rod set at 74.93 feet.

THENCE, with the shore line of Indian Lake, the following six courses:

N 18°-27'-24"E, a distance of 34.70 feet to a point, referenced by a 5/8 inch iron rod set bearing S 45°-47'-46"E, a distance of 14.20 feet.

N 65°-13'-49"E, a distance of 69.97 feet to a point, referenced by a 5/8 inch iron rod set bearing S 35°-24'-43"E, a distance of 5.77 feet.

S 61°-38'-08"E, a distance of 73.90 feet to a point, referenced by a 2 inch metal pipe found bearing S 42°-04'-47"W, a distance of 16.71 feet.

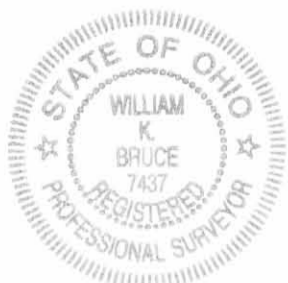
N 88°-56'-08"E, a distance of 133.12 feet to a point, referenced by a 5/8 inch iron rod set bearing S 18°-30'-44"W, a distance of 12.44 feet.

S 24°-13'-08"E, a distance of 151.44 feet to a point, referenced by a 5/8 inch iron rod set bearing N 50°-26'-16"W, a distance of 3.73 feet.

N 72°-00'-20"E, a distance of 133.60 feet to the point of beginning.

Containing 1.007 acres.

The basis for bearings is the north line of the State of Ohio, Department of Natural Resources 53 1/2 acre tract (O.R. 414, Pg. 832, Tract I), being S 82°-13'-54"W, and all other bearings are from angles and distances measured in a field survey by Lee Surveying and Mapping Co., Inc. on February 15, 2008.

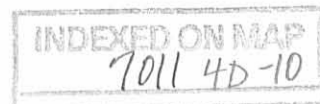


ORIGINAL STAMP IN GREEN

Description prepared by:

*William K. Bruce*

William K. Bruce  
Professional Surveyor 7437  
February 18, 2008



4584018

REC'D 3-3-08 SMJ OK

# Lee Surveying and Mapping Co., Inc.

Land Surveys • Topography • Subdivisions • Construction Layout

117 N. Madriver St.  
Bellefontaine OH 43311



Phone: (937) 593-7335  
Fax: (937) 593-7444

## O'CONNOR'S LANDING, INC. 9.906 ACRES

Lying in Virginia Military Survey 9968, Richland Township, Logan County, Ohio.

Being all of the O'Connor's Landing, Inc., 10.35 acre tract as deeded and described in Volume 353, Page 659, Parcel I, Tract I of the Logan County Records of Deeds and being more particularly described as follows:

Commencing on a 1-1/2 inch square iron bar found at an angle point in County Highway 254 at Station 52+58.50 (Logan County Engineer's Field Book 500, Page 11).

THENCE, with the west boundary line of the O'Connor Farms, Inc., original 130 acre tract (Vol. 353, Pg. 663, Tract VI), S 9°-47'-40"E, a distance of 555.89 feet to a 5/8 inch iron rod set on the State Line at the TRUE POINT OF BEGINNING, passing 5/8 inch iron rods set at 25.03 feet, 182.08 feet and 525.41 feet.

THENCE, with the west line of the said original 130 acre tract, S 9°-47'-40"E, a distance of 970.71 feet to a 5/8 inch iron rod set.

THENCE, with the north line of the State of Ohio, Department of Natural Resources 53 1/2 acre tract (O.R. 414, Pg. 832, Tract I), S 82°-13'-54"W, a distance of 439.56 feet to a 10" Elm tree found on the State Line, passing a 2 inch metal pipe found at 427.00 feet.

THENCE, with the State Line, the following three courses:

N 11°-16'-59"W, a distance of 213.53 feet to a 5/8 inch iron rod set, passing a 5/8 inch iron rod set at 1.81 feet.

N 0°-16'-31"W, a distance of 170.88 feet to a 5/8 inch square iron bar found at Wonders Base Line Station 214+57.3.

N 31°-05'-21"W, a distance of 188.86 feet to a point on the shore line of Indian Lake, referenced by a 5/8 inch iron rod set bearing N 81°-30'-19"E, a distance of 10.00 feet.

THENCE, with the shore line of Indian Lake, N 8°-29'-41"W, a distance of 42.86 feet to a point on the State Line, referenced by a 5/8 inch iron rod set bearing N 81°-30'-19"E, a distance of 10.00 feet.

THENCE, with the State Line, N 6°-14'-20"E, a distance of 78.29 feet to a point on the shore line of Indian Lake, referenced by a 5/8 inch iron rod set bearing S 70°-45'-05"E, a distance of 10.00 feet.

THENCE, with the shore line of Indian Lake, the following two courses:

N 19°-14'-55"E, a distance of 156.33 feet to a point, referenced by a 5/8 inch iron rod set bearing S 68°-30'-30"E, a distance of 12.16 feet.

N 20°-33'-49"W, a distance of 12.58 feet to a point on the State Line, referenced by a 5/8 inch iron rod set bearing N 69°-18'-29"E, a distance of 19.83 feet.

THENCE, with the State Line, the following two courses:

N 18°-54'-15"E, a distance of 18.71 feet to a 5/8 inch iron rod set at Wonders Base Line Station 219+53.

N 25°-54'-34"W, a distance of 127.63 feet to a point on the shore line of Indian Lake, referenced by a 5/8 inch iron rod set bearing N 69°-26'-11"E, a distance of 10.00 feet.

THENCE, with the shore line of Indian Lake, the following two courses:

INDEXED ON MAP  
7011 4D-2

# Lee Surveying and Mapping Co., Inc.

Land Surveys • Topography • Subdivisions • Construction Layout

117 N. Madriver St.  
Bellefontaine OH 43311



Phone: (937) 593-7335  
Fax: (937) 593-7444

N 20°-33'-49"W, a distance of 164.54 feet to a point, referenced by a 5/8 inch iron rod set bearing N 72°-59'-17"E, a distance of 16.55 feet.

N 18°-27'-24"E, a distance of 5.38 feet to a point on the State Line.

THENCE, with the State Line, the following four courses:

S 88°-56'-33"E, a distance of 89.06 feet to a 5/8 inch iron rod set, passing a 5/8 inch iron rod set at 14.13 feet.

N 67°-24'-19"E, a distance of 42.58 feet to a 2 inch metal pipe found.

S 20°-40'-36"E, a distance of 246.99 feet to a 2 inch metal pipe found.

N 64°-39'-11"E, a distance of 278.23 feet to the point of beginning.

Containing 9.906 acres.

The basis for bearings is the north line of the State of Ohio, Department of Natural Resources 53 1/2 acre tract (O.R. 414, Pg. 832, Tract I), being S 82°-13'-54"W, and all other bearings are from angles and distances measured in a field survey by Lee Surveying and Mapping Co., Inc. on February 15, 2008.



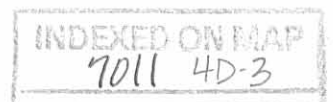
ORIGINAL STAMP IN GREEN

Description prepared by:

A handwritten signature in cursive script that reads 'William K. Bruce'.

William K. Bruce  
Professional Surveyor 7437  
February 18, 2008

4584018



REV'D 3-3-08 SMJ BK

# Lee Surveying and Mapping Co., Inc.

Land Surveys • Topography • Subdivisions • Construction Layout

117 N. Madriver St.  
Bellefontaine OH 43311



Phone: (937) 593-7335  
Fax: (937) 593-7444

## INDIAN LAKE RESERVOIR LANDS 1.107 ACRES

Lying in Virginia Military Survey 9968, Richland Township, Logan County, Ohio.

Being out of the Indian Lake Reservoir Lands and being more particularly described as follows:

Commencing on a 1-1/2 inch square iron bar found at an angle point in County Highway 254 at Station 52+58.50 (Logan County Engineer's Field Book 500, Page 11).

THENCE, with the west boundary line of the O'Connor Farms, Inc., original 130 acre tract (Vol. 353, Pg. 663, Tract VI), S 9°-47'-40"E, a distance of 1526.60 feet to a 5/8 inch iron rod set, passing 5/8 inch iron rods set at 25.03 feet, 182.08 feet, 525.41 feet and 555.89 feet.

THENCE, with the north line of the State of Ohio, Department of Natural Resources 53 1/2 acre tract (O.R. 414, Pg. 832, Tract I), S 82°-13'-54"W, a distance of 439.56 feet to a 10" Elm tree found on the State Line at the TRUE POINT OF BEGINNING, passing a 2 inch metal pipe found at 427.00 feet.

THENCE, with the north line of the said 53 1/2 acre tract extended, S 82°-13'-54"W, a distance of 245.42 feet to a point on the shore line of Indian Lake, passing a 5/8 inch iron rod set at 236.81 feet.

THENCE, with the shore line of Indian Lake, the following six courses:

N 1°-53'-39"E, a distance of 214.57 feet to a point, referenced by a 5/8 inch iron rod set bearing S 1°-31'-26"E, a distance of 15.64 feet.

S 66°-59'-21"E, a distance of 54.48 feet to a point, referenced by a 5/8 inch iron rod set bearing S 18°-06'-58"E, a distance of 15.17 feet.

N 64°-44'-55"E, a distance of 136.53 feet to a point, referenced by a 5/8 inch iron rod set bearing S 66°-52'-42"E, a distance of 22.47 feet.

N 5°-21'-16"E, a distance of 164.10 feet to a point, referenced by a 5/8 inch square iron bar found at Wonders Base Line Station 214+57.3 bearing S 73°-42'-28"E, a distance of 4.72 feet.

N 32°-02'-54"W, a distance of 170.86 feet to a point, referenced by a 5/8 inch iron rod set bearing N 54°-46'-13"E, a distance of 8.41 feet.

N 8°-29'-41"W, a distance of 15.76 feet to a point on the State Line, referenced by a 5/8 inch iron rod set bearing N 81°-30'-19"E, a distance of 10.00 feet.

THENCE, with the State Line, the following three courses:

S 31°-05'-21"E, a distance of 188.86 feet to a 5/8 inch square iron bar found at Wonders Base Line Station 214+57.3.

S 0°-16'-31"E, a distance of 170.88 feet to a 5/8 inch iron rod set.





# Lee Surveying and Mapping Co., Inc.

Land Surveys • Topography • Subdivisions • Construction Layout

117 N. Madriver St.  
Bellefontaine OH 43311



Phone: (937) 593-7335  
Fax: (937) 593-7444

S 11°-16'-59"E, a distance of 213.53 feet to the point of beginning, passing a 5/8 inch iron rod set at 211.72 feet.

Containing 1.107 acres.

The basis for bearings is the north line of the State of Ohio, Department of Natural Resources 53 1/2 acre tract (O.R. 414, Pg. 832, Tract I), being S 82°-13'-54"W, and all other bearings are from angles and distances measured in a field survey by Lee Surveying and Mapping Co., Inc. on February 15, 2008.



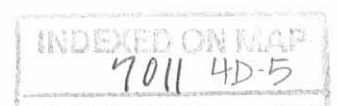
ORIGINAL STAMP IN GREEN

Description prepared by:

*William K. Bruce*

William K. Bruce  
Professional Surveyor 7437  
February 18, 2008

4584018



REVISED 3-3-08 SWM OK

# Lee Surveying and Mapping Co., Inc.

Land Surveys • Topography • Subdivisions • Construction Layout

117 N. Madriver St.  
Bellefontaine OH 43311



Phone: (937) 593-7335  
Fax: (937) 593-7444

## INDIAN LAKE RESERVOIR LANDS 0.009 ACRE

Lying in Virginia Military Survey 9968, Richland Township, Logan County, Ohio.

Being out of the Indian Lake Reservoir Lands and being more particularly described as follows:

Commencing on a 1-1/2 inch square iron bar found at an angle point in County Highway 254 at Station 52+58.50 (Logan County Engineer's Field Book 500, Page 11).

THENCE, with the west boundary line of the O'Connor Farms, Inc., original 130 acre tract (Vol. 353, Pg. 663, Tract VI), S 9°-47'-40"E, a distance of 1526.60 feet to a 5/8 inch iron rod set, passing 5/8 inch iron rods set at 25.03 feet, 182.08 feet, 525.41 feet and 555.89 feet.

THENCE, with the north line of the State of Ohio, Department of Natural Resources 53 1/2 acre tract (O.R. 414, Pg. 832, Tract I), S 82°-13'-54"W, a distance of 439.56 feet to a 10" Elm tree found on the State Line, passing a 2 inch metal pipe found at 427.00 feet.

THENCE, with the north line of the said 53 1/2 acre tract extended, S 82°-13'-54"W, a distance of 245.42 feet to a point on the shore line of Indian Lake, passing a 5/8 inch iron rod set at 236.81 feet.

THENCE, with the shore line of Indian Lake, the following six courses:

N 1°-53'-39"E, a distance of 214.57 feet to a point, referenced by a 5/8 inch iron rod set bearing S 1°-31'-26"E, a distance of 15.64 feet.

S 66°-59'-21"E, a distance of 54.48 feet to a point, referenced by a 5/8 inch iron rod set bearing S 18°-06'-58"E, a distance of 15.17 feet.

N 64°-44'-55"E, a distance of 136.53 feet to a point, referenced by a 5/8 inch iron rod set bearing S 66°-52'-42"E, a distance of 22.47 feet.

N 5°-21'-16"E, a distance of 164.10 feet to a point, referenced by a 5/8 inch square iron bar found at Wonders Base Line Station 214+57.3 bearing S 73°-42'-28"E, a distance of 4.72 feet.

N 32°-02'-54"W, a distance of 170.86 feet to a point, referenced by a 5/8 inch iron rod set bearing N 54°-46'-13"E, a distance of 8.41 feet.

N 8°-29'-41"W, a distance of 58.62 feet to a point on the State Line at the TRUE POINT OF BEGINNING, referenced by a 5/8 inch iron rod set bearing N 81°-30'-19"E, a distance of 10.00 feet.

THENCE, with the shore line of Indian Lake, the following two courses:

N 8°-29'-41"W, a distance of 37.86 feet to a point, referenced by a 5/8 inch iron rod set bearing S 65°-26'-18"E, a distance of 6.89 feet.

N 19°-14'-55"E, a distance of 42.77 feet to a point on the State Line, referenced by a 5/8 inch iron rod set bearing S 70°-45'-05"E, a distance of 10.00 feet.



# Lee Surveying and Mapping Co., Inc.

Land Surveys • Topography • Subdivisions • Construction Layout

117 N. Madriver St.  
Bellefontaine OH 43311



Phone: (937) 593-7335  
Fax: (937) 593-7444

THENCE, with the State Line, S 6°-14'-20"W, a distance of 78.29 feet to the point of beginning.

Containing 0.009 acre.

The basis for bearings is the north line of the State of Ohio, Department of Natural Resources 53 1/2 acre tract (O.R. 414, Pg. 832, Tract I), being S 82°-13'-54"W, and all other bearings are from angles and distances measured in a field survey by Lee Surveying and Mapping Co., Inc. on February 15, 2008.



ORIGINAL STAMP IN GREEN

Description prepared by:

A handwritten signature in black ink that reads 'William K. Bruce'.

William K. Bruce  
Professional Surveyor 7437  
February 18, 2008

4584018





REC'D 3-3-00 S.M.J.

# Lee Surveying and Mapping Co., Inc.

Land Surveys • Topography • Subdivisions • Construction Layout

117 N. Madriver St.  
Bellefontaine OH 43311



Phone: (937) 593-7335  
Fax: (937) 593-7444

## INDIAN LAKE RESERVOIR LANDS 0.019 ACRE

Lying in Virginia Military Survey 9968, Richland Township, Logan County, Ohio.

Being out of the Indian Lake Reservoir Lands and being more particularly described as follows:

Commencing on a 1-1/2 inch square iron bar found at an angle point in County Highway 254 at Station 52+58.50 (Logan County Engineer's Field Book 500, Page 11).

THENCE, with the west boundary line of the O'Connor Farms, Inc., original 130 acre tract (Vol. 353, Pg. 663, Tract VI), S 9°-47'-40"E, a distance of 1526.60 feet to a 5/8 inch iron rod set, passing 5/8 inch iron rods set at 25.03 feet, 182.08 feet, 525.41 feet and 555.89 feet.

THENCE, with the north line of the State of Ohio, Department of Natural Resources 53 1/2 acre tract (O.R. 414, Pg. 832, Tract I), S 82°-13'-54"W, a distance of 439.56 feet to a 10" Elm tree found on the State Line, passing a 2 inch metal pipe found at 427.00 feet.

THENCE, with the north line of the said 53 1/2 acre tract extended, S 82°-13'-54"W, a distance of 245.42 feet to a point on the shore line of Indian Lake, passing a 5/8 inch iron rod set at 236.81 feet.

THENCE, with the shore line of Indian Lake, the following eight courses:

N 1°-53'-39"E, a distance of 214.57 feet to a point, referenced by a 5/8 inch iron rod set bearing S 1°-31'-26"E, a distance of 15.64 feet.

S 66°-59'-21"E, a distance of 54.48 feet to a point, referenced by a 5/8 inch iron rod set bearing S 18°-06'-58"E, a distance of 15.17 feet.

N 64°-44'-55"E, a distance of 136.53 feet to a point, referenced by a 5/8 inch iron rod set bearing S 66°-52'-42"E, a distance of 22.47 feet.

N 5°-21'-16"E, a distance of 164.10 feet to a point, referenced by a 5/8 inch square iron bar found at Wonders Base Line Station 214+57.3 bearing S 73°-42'-28"E, a distance of 4.72 feet.

N 32°-02'-54"W, a distance of 170.86 feet to a point, referenced by a 5/8 inch iron rod set bearing N 54°-46'-13"E, a distance of 8.41 feet.

N 8°-29'-41"W, a distance of 96.48 feet to a point, referenced by a 5/8 inch iron rod set bearing S 65°-26'-18"E, a distance of 6.89 feet.

N 19°-14'-55"E, a distance of 199.10 feet to a point, referenced by a 5/8 inch iron rod set bearing S 68°-30'-30"E, a distance of 12.16 feet.

N 20°-33'-49"W, a distance of 12.58 feet to a point on the State Line at the TRUE POINT OF BEGINNING, referenced by a 5/8 inch iron rod set bearing N 69°-18'-29"E, a distance of 19.83 feet.

THENCE, with the shore line of Indian Lake, N 20°-33'-49"W, a distance of 141.51 feet to a point on the State Line, referenced by a 5/8 inch iron rod set bearing N 69°-26'-11"E, a distance of 10.00 feet.

THENCE, with the State Line, the following two courses:

S 25°-54'-34"E, a distance of 127.63 feet to a 5/8 inch iron rod set at Wonders Base Line Station 219+53.

INDEXED ON MAP  
7011 4D-8

# Lee Surveying and Mapping Co., Inc.

Land Surveys • Topography • Subdivisions • Construction Layout

117 N. Madriver St.  
Bellefontaine OH 43311



Phone: (937) 593-7335  
Fax: (937) 593-7444

S 18°-54'-15"W, a distance of 18.71 feet to the point of beginning.

Containing 0.019 acre.

The basis for bearings is the north line of the State of Ohio, Department of Natural Resources 53 1/2 acre tract (O.R. 414, Pg. 832, Tract I), being S 82°-13'-54"W, and all other bearings are from angles and distances measured in a field survey by Lee Surveying and Mapping Co., Inc. on February 15, 2008.



ORIGINAL STAMP IN GREEN

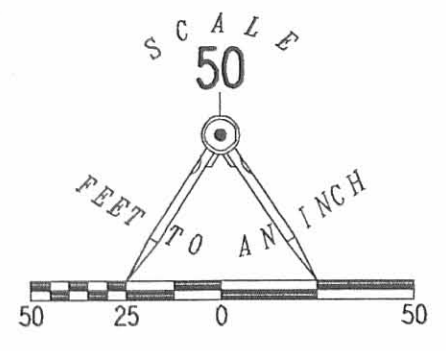
Description prepared by:

A handwritten signature in cursive script that reads 'William K. Bruce'.

William K. Bruce  
Professional Surveyor 7437  
February 18, 2008

4584018



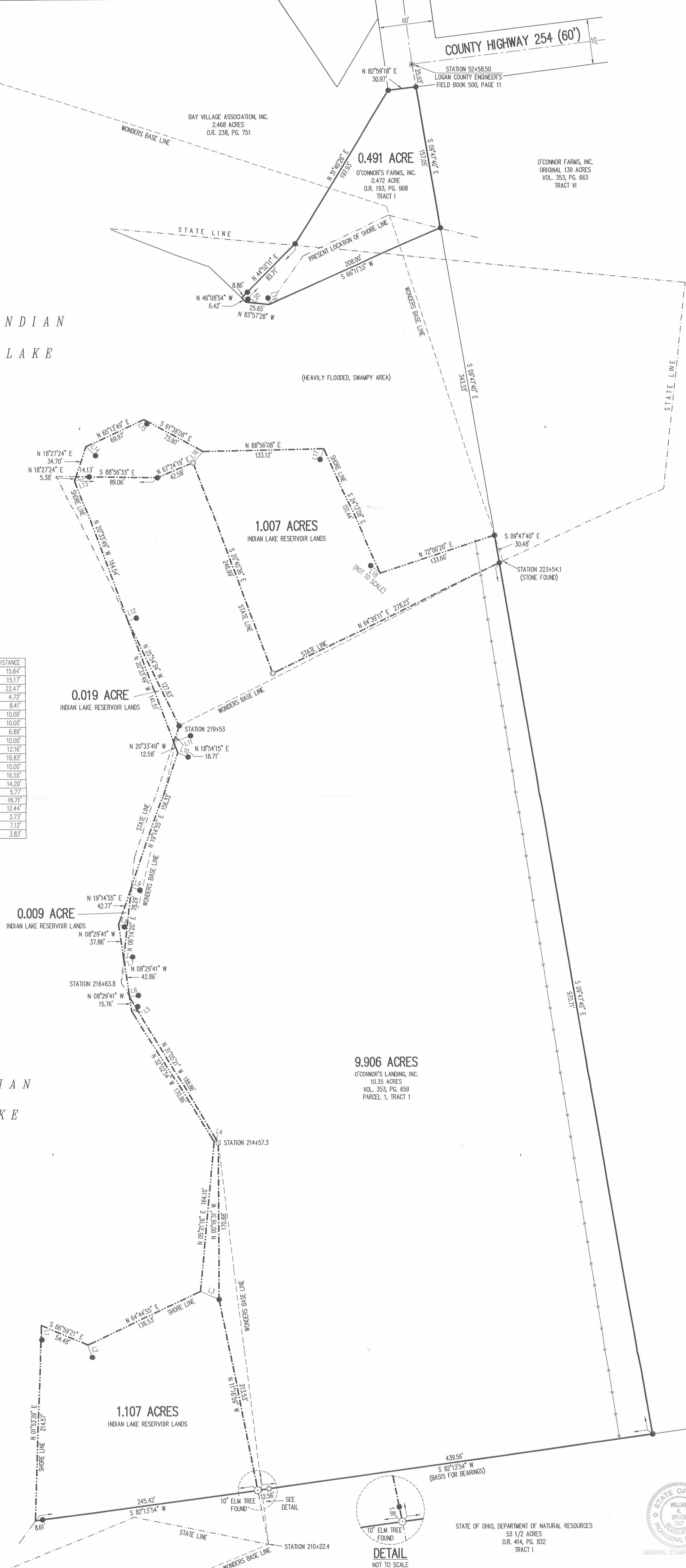


- LEGEND:
- 5/8 INCH IRON ROD SET
  - 2 INCH METAL PIPE FOUND
  - 5/8 INCH SQUARE IRON BAR FOUND
  - 1-1/2 INCH SQUARE IRON BAR FOUND
  - - - - DENOTES SHORE LINE
  - - - - DENOTES WONDERS BASE LINE
  - DENOTES STATE LINE

INDIAN  
LAKE

(HEAVILY FLOODED, SWAMPY AREA)

LINE	BEARING	DISTANCE
L1	S 01°31'26" E	15.64'
L2	S 18°06'58" E	15.17'
L3	S 66°52'42" E	22.47'
L4	S 73°42'28" E	4.72'
L5	N 54°46'13" E	8.41'
L6	N 81°30'19" E	10.00'
L7	N 81°30'19" E	10.00'
L8	S 65°26'18" E	6.89'
L9	S 70°45'05" E	10.00'
L10	S 68°30'30" E	12.16'
L11	N 69°18'29" E	19.83'
L12	N 69°26'11" E	10.00'
L13	N 72°59'17" E	16.55'
L14	S 45°47'46" E	14.20'
L15	S 35°24'43" E	5.77'
L16	S 42°04'47" W	16.71'
L17	S 18°30'44" W	12.44'
L18	N 50°26'16" W	3.73'
L19	N 09°31'32" E	7.12'
L20	N 35°51'29" E	3.83'



2 WORKING DAYS  
**BEFORE YOU DIG**  
CALL TOLL FREE 800-362-2764  
OHIO UTILITIES PROTECTION SERVICE

RETRACEMENT SURVEY OF THE  
O'CONNOR'S LANDING, INC.  
10.35 ACRE TRACT  
VOLUME 353, PAGE 659  
PARCEL 1, TRACT I  
AND  
O'CONNOR'S FARMS, INC.  
0.472 ACRE TRACT  
OFFICIAL RECORD 193, PAGE 968  
TRACT I  
VIRGINIA MILITARY SURVEY 9968  
RICHLAND TOWNSHIP  
LOGAN COUNTY, OHIO

SURVEYED BY:  
*William K. Bruce*  
WILLIAM K. BRUCE  
PROFESSIONAL SURVEYOR 7437  
FEBRUARY 15, 2008



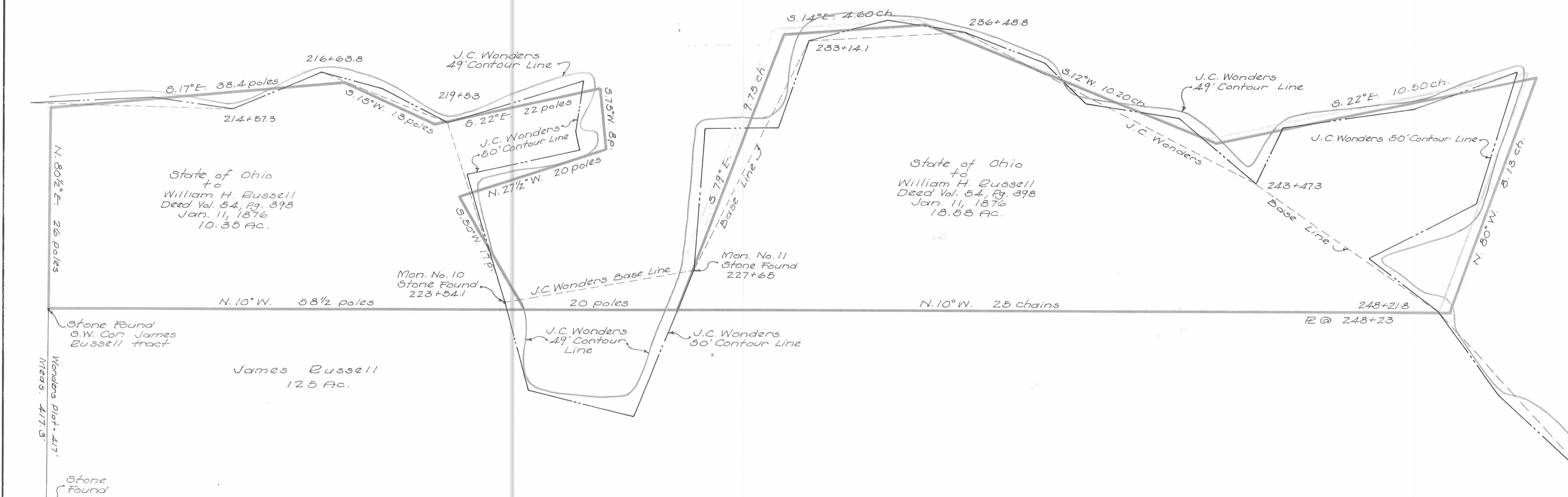
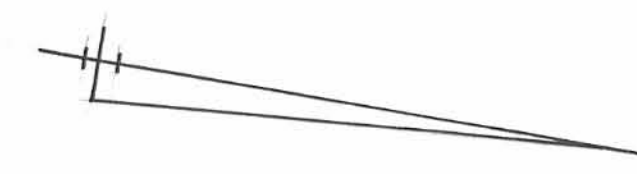
STATE OF OHIO, DEPARTMENT OF NATURAL RESOURCES  
5 1/2 ACRES  
O.R. 414, PG. 832  
TRACT I

COPYRIGHT 2008 BY:  
LEE SURVEYING & MAPPING CO., INC.  
117 North Medriver Street  
BELLEFONTAIN, OHIO 43111  
(937) 593-7335  
surveys@lsmcinc.us  
KSS D0208 4584018 L-4584-1

INDEXED ON MAP  
7011 4P



INDIAN LAKE



PLAT OF M. H. McCORMICK SURVEY  
OF  
STATE LANDS IN AND AROUND  
LEWISTOWN RESERVOIR  
DATED APRIL 6, 1876

AND  
J. C. WONDERS SURVEY  
OF  
LEWISTOWN RESERVOIR LANDS  
DATED 1892

V.M.S. 9968  
RICHLAND TOWNSHIP  
LOGAN COUNTY, OHIO  
1975  
SCALE 1" = 100'

Drawn by  
Dan L. Dodson  
Reg. Surveyor 4270  
Bellevue, Ohio