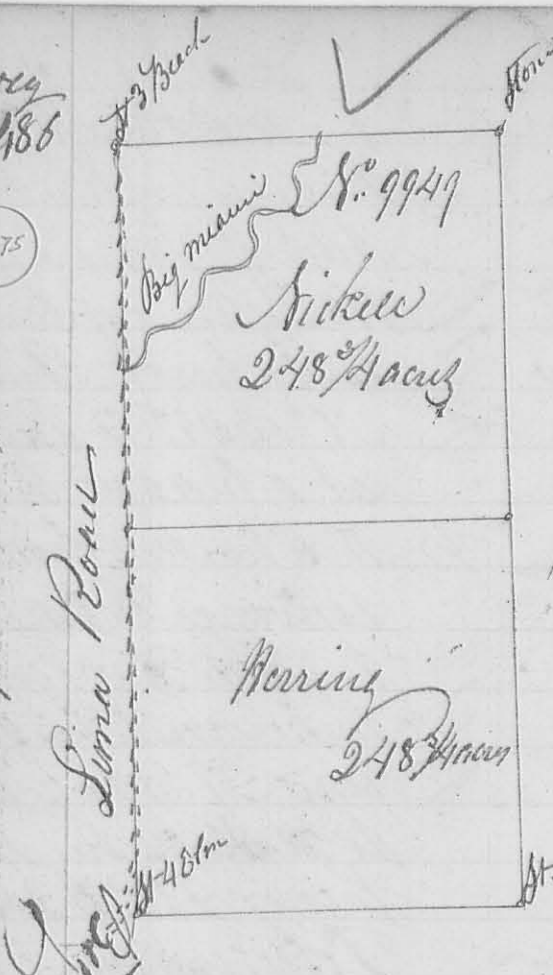


Survey  
No. 286

6475

May. 10. 1842



1<sup>st</sup> mo. July 6<sup>th</sup>. 1842

Surveyed for James  
Nickel 497 1/2 acres of  
land being part of Survey  
No. 9949 on the waters of Big  
Miami. Beginning at a  
stone between 4 Elm (one  
down) thence with the <sup>east</sup> line  
of Survey <sup>9949</sup> N 10° W 396  
Poles crossing the Big Miami  
at 288 poles to a stone between  
3 Beech Stumps N. E. & to  
Survey 9948 & S. 10 to Survey 9970  
thence with the south line of said

Survey N 79° E 201 poles crossing the Miami at 104  
to a stone thence N 10° E 396 poles to a stone in  
the north line of Survey 9929 thence with said line  
S 79° W 201 Poles to the beginning

Lot No. 1 - Begin as above thence with East line of  
Survey 9948 N 10° W 198 Poles to a stone thence  
N 79° E 201 Poles to a stone between a Beech &  
Small Hickory thence S 10° E 198 Poles to a stone in  
the north line of Survey No. 9929 thence with said line  
South 79° W 201 poles to the beginning containing 248 1/2 a.

Lot No. 2 Begin at a stone between 3 beech stumps N.E.  
& to Survey 9948 & S. 10 to 9970 thence with the south line of  
said survey N 79° E 201 poles crossing the Big Miami at 104  
poles to a stone thence S 10° E 198 poles to a stone between a  
Beech & Small Hickory & to lot No. 1 thence with the north  
line of said lot S 79° W 201 poles to a stone in the east line of  
Survey 9948 N. 10 & to lot No. 1 thence with said line N 10° E  
198 poles crossing the Miami at 90 poles to the beginning  
containing 248 1/2 acres.

Isaac J. Nizkaah Miller & John Mechem C.S.S.  
Ch. Mer