



# Lee Surveying and Mapping Co.



Farm Surveys • Lot Surveys • Topography • Subdivisions • Construction Layout

143 EAST COLUMBUS AVENUE  
BELLEFONTAINE, OHIO 43311

(513) 593-7335

JEFFREY I. LEE, P.S.

## JAMES E. DUFF 83.455 ACRES

Lying in Virginia Military Survey 9968, Richland Township, Logan County, Ohio.

Being all of the James E. Duff 29.67 acre tract as deeded and described in Official Record 119, Page 565 and 54.06 acre tract as deeded and described in Official Record 225, Page 611 of the Logan County Records of Deeds and being more particularly described as follows:

Beginning at a 1/2 inch iron rod found on the center-line of Township Road 96 at the northeast corner of the James M. Harpest 1.15 acre tract (O.R. 153, Pg. 394).

THENCE, with the center-line of Township Road 96 (50 feet wide), S 87°-07'-31" W, a distance of 732.72 feet to a 5/8 inch iron rod found.

THENCE, with the west line of the John W. Kennedy 7.80 acre tract (Vol. 292, Pg. 643, Tr. II), S 5°-30'-04" E a distance of 319.36 feet to a 5/8 inch iron rod set.

THENCE, S 87°-06'-22" W, a distance of 173.98 feet to a 5/8 inch iron rod set.

THENCE, N 86°-23'-38" W, a distance of 122.37 feet to a 5/8 inch iron rod set.

THENCE, N 49°-39'-38" W, a distance of 148.96 feet to a 5/8 inch iron rod set.

THENCE, N 64°-48'-38" W, a distance of 173.35 feet to a 5/8 inch iron rod set.

THENCE, N 65°-32'-38" W, a distance of 239.59 feet to a 5/8 inch iron rod set.

THENCE, S 11°-21'-22" W, a distance of 87.06 feet to a point in the water, passing a 5/8 inch iron rod set for reference at 60.00 feet.

THENCE, in the water of Indian Lake the following eleven courses:

N 45°-52'-38" W, a distance of 79.71 feet to a point.

N 21°-41'-38" W, a distance of 50.58 feet to a point.

N 1°-11'-22" E, a distance of 123.71 feet to a point.

N 25°-14'-22" E, a distance of 97.04 feet to a point.

N 58°-55'-22" E, a distance of 105.11 feet to a point.

N 55°-32'-22" E, a distance of 100.11 feet to a point.

N 59°-08'-22" E, a distance of 98.66 feet to a point.

N 35°-48'-22" E, a distance of 93.34 feet to a point.

N 6°-26'-22" E, a distance of 60.82 feet to a point.

N 10°-28'-38" W, a distance of 56.18 feet to a point.

N 21°-32'-10" W, a distance of 152.21 feet to a point.

THENCE, with the lines of the D. Gregory Gebhart 1.935 acre tract (O.R. 163, Pg. 149), the following three courses:

N 82°-07'-33" E, a distance of 311.69 feet to a 5/8 inch iron rod found on the west right-of-way of Township Road 96, passing a 5/8 inch iron rod found at 16.52 feet.

N 5°-31'-21" W, with the west right-of-way of Township Road 96, a distance of 85.00 feet to a 5/8 inch iron rod found.

N 82°-24'-22" E, with the north right-of-way of Township Road 96, a distance of 30.02 feet to a 5/8 inch iron rod found.

THENCE, with the lines of the Judith A. Jutras 0.47 acre tract (Vol. 355, Pg. 454) the following three courses:

S 5°-31'-21" E, a distance of 19.42 feet to a 5/8 inch iron rod set.

N 83°-54'-07" E, a distance of 122.78 feet to a 5/8 inch iron rod set.

N 5°-30'-21" W, a distance of 166.28 feet to a 3/4 inch metal pipe found.

THENCE, with the north lines of the aforementioned 0.47 acre and 1.935 acre tracts, S 83°-54'-18" W, a distance of 526.52 feet to a point.

THENCE, with the easterly lines of the State of Ohio Lake Lands the following four courses:

N 46°-27'-08" W, a distance of 170.38 feet to a 1/2 inch square iron rod found, passing a 5/8 inch iron rod set at 20.38 feet.

N 9°-48'-11" W, a distance of 196.33 feet to a 5/8 inch iron rod set.

N 10°-27'-10" E, a distance of 287.40 feet to a 1/2 inch square iron rod found.

N 40°-04'-37" E, a distance of 270.32 feet to a point, passing a 5/8 inch iron rod set at 250.00 feet.

THENCE, with the shore line of Indian Lake following two courses:

N 72°-27'-34" E, a distance of 37.23 feet to a point.

N 81°-36'-27" E, a distance of 14.17 feet to a point.

INDEXED ON MAP  
9016 1D-1



# Lee Surveying and Mapping Co.



Farm Surveys • Lot Surveys • Topography • Subdivisions • Construction Layout

143 EAST COLUMBUS AVENUE  
BELLEFONTAINE, OHIO 43311

(513) 593-7335

JEFFREY I. LEE, P.S.

THENCE, with the southerly lines of the State of Ohio Lake Lands the following three courses:

- N 83°-25'-59" E, a distance of 159.07 feet to a 3 inch post found.
- N 77°-08'-08" E, a distance of 285.84 feet to a 1/2 inch square iron rod found.
- N 56°-12'-56" E, a distance of 156.64 feet to a point, passing a 5/8 inch iron rod set at 130.00 feet.

THENCE, with the shore line of Indian Lake the following two courses:

- N 77°-46'-17" E, a distance of 26.00 feet to a point.
- N 38°-18'-20" E, a distance of 31.06 feet to a point.

THENCE, with the lines of the State of Ohio Lake Lands the following four courses:

- N 56°-12'-56" E, a distance of 197.67 feet to a 5/8 inch iron rod set, passing a 5/8 inch iron rod set at 27.67 feet.
- N 68°-24'-47" E, a distance of 328.47 feet to a 3 inch metal post found.
- S 78°-16'-00" E, a distance of 152.21 feet to a 5/8 inch iron rod set.
- N 6°-27'-34" W, a distance of 56.66 feet to a 3 inch metal post found at the southwest corner of the O'Connor's Landing Inc. 12.25 acre tract (Vol. 353, Pg. 659).

THENCE, with the south lines of the said 12.25 acre tract and the O'Connor Farms Inc. 130 acre tract (Vol. 353, Pg. 663, Tr. VI), N 83°-56'-28" E, a distance of 852.24 feet to a stone found.

THENCE, with the west line of the O'Connor Farms Inc. 42 acre tract (Vol. 353, Pg. 663, Tr. IV), S 7°-18'-43" E, a distance of 1083.30 feet to a stone found.

THENCE, with the north line of the John W. Kennedy 14.65 acre tract (Vol. 292, Pg. 643, TR. I), S 82°-02'-34" W, a distance of 1083.78 feet to a 5/8 inch iron rod set.

THENCE, with the lines of the Judith A. Jutras 0.859 acre tract (Vol. 355, Pg. 456) the following three courses:

- S 83°-54'-18" W, a distance of 223.04 feet to a 5/8 inch metal pipe found.
- S 5°-37'-04" E, a distance of 166.25 feet to a 5/8 inch iron rod set.
- N 83°-54'-07" E, a distance of 225.30 feet to a 5/8 inch iron rod set.

THENCE, with the west lines of the aforementioned 14.65 acre tract and the Rebecca J. Connor 117.11 acre tract (Vol. 255, Pg. 169), S 6°-23'-26" E, a distance of 845.37 feet to the point of beginning.

Containing 83.455 acres of which 1.582 acre is within the highway right-of-way.

The basis for bearings is based upon the center-line of Township Road 96 being S 82°-16'-30" W, along the south side of the aforesaid 117.11 acre tract, and all other bearings are from angles and distances measured in a field survey by Lee Surveying and Mapping Company on April 6, 1995.

Description prepared by:

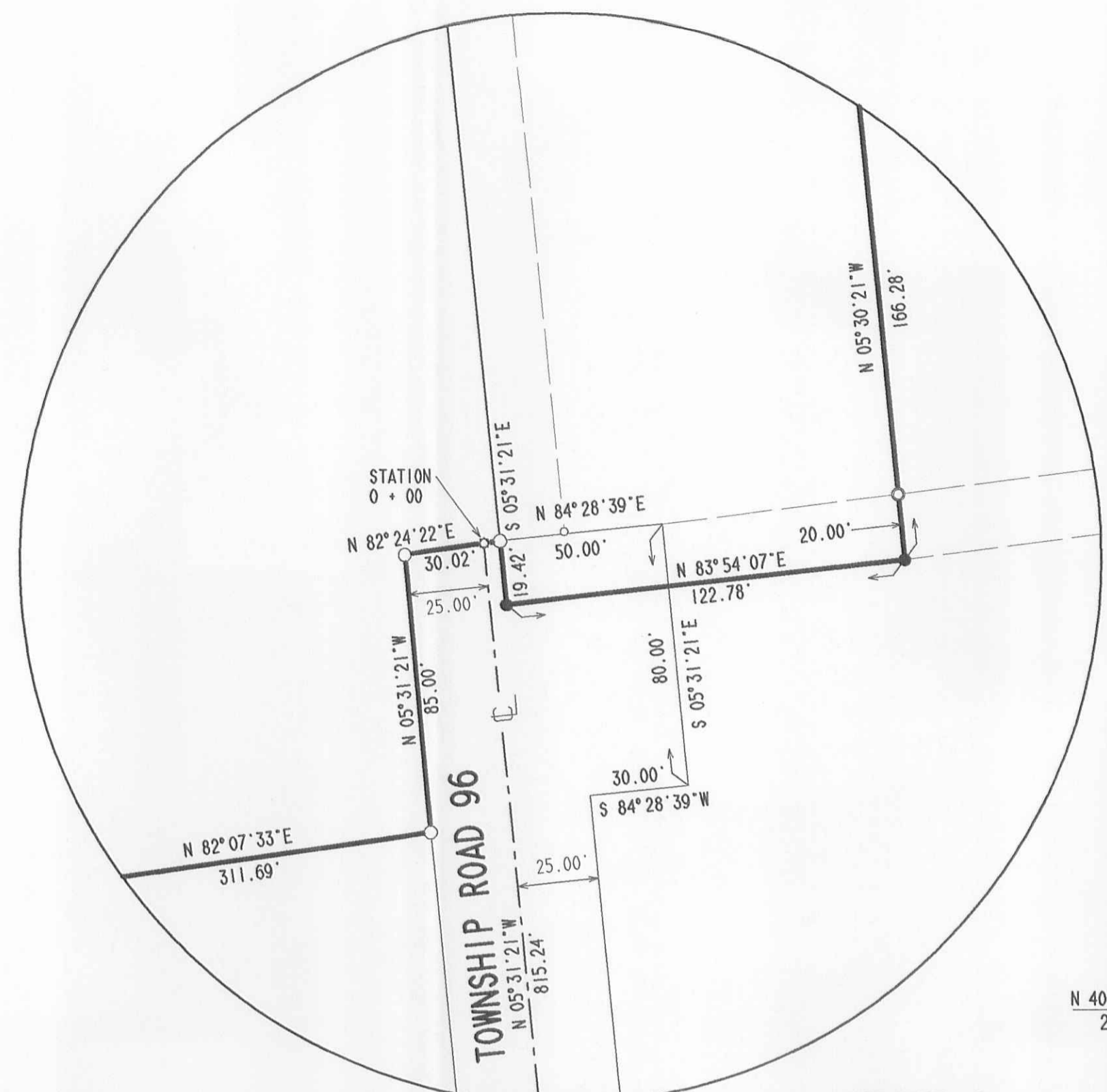
*(Handwritten Signature)*  
 Jeffrey I. Lee  
 Professional Surveyor 6359  
 June 28, 1995



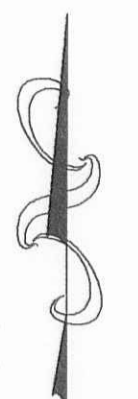
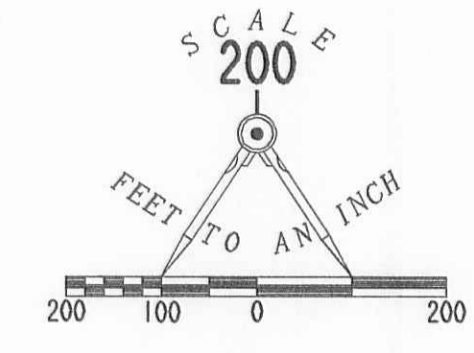
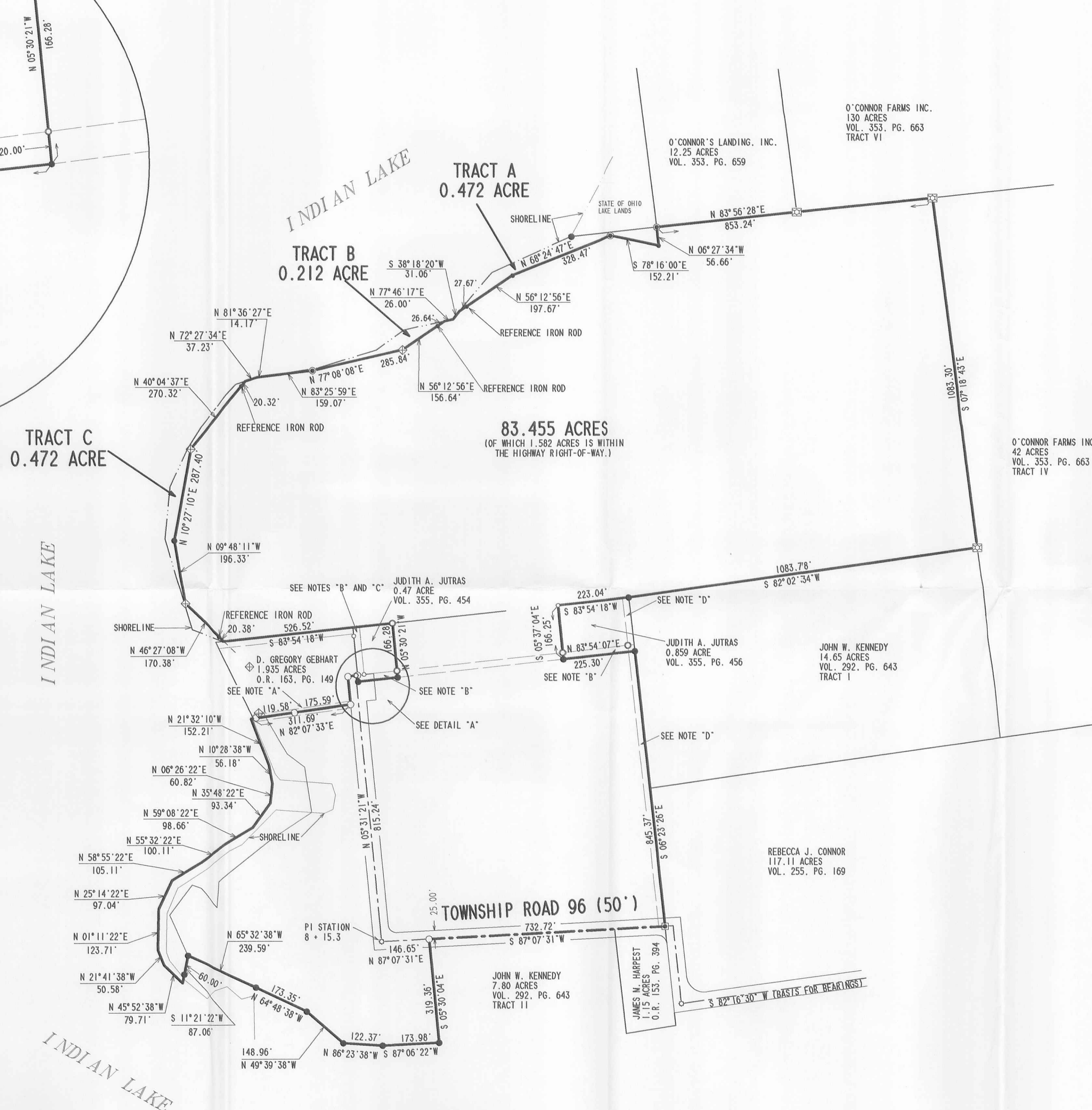
L 2235

ORIGINAL STAMP IN GREEN

INDEXED ON MAP  
 9016 1D2



DETAIL "A"



LEGEND

- 5/8" IRON ROD FOUND
- 5/8" METAL PIPE FOUND
- 3/4" METAL PIPE FOUND
- STONE FOUND
- ⊕ 1/2" SQUARE IRON ROD FOUND
- 3" POST FOUND
- 3/4" IRON ROD FOUND
- ⊕ 1/2" IRON ROD FOUND
- 5/8" IRON ROD SET

REFERENCES

- LOGAN COUNTY ENGINEER'S FIELD BOOK 702, PAGES 1 THRU 3.
- LOGAN COUNTY MAP ROOM DRAWER "R", FILE NUMBERS 3923, 3955, 7012, AND 7350.
- LOGAN COUNTY MAP ROOM HIGHWAY MAP X 36.
- STATE OF OHIO SURPLUS PROPERTY MAP SHEET 23 OF 25.
- LEE SURVEYING FILE L-2235 SURVEY OF LAKE LANDS SHOWN AS TRACT A, B, AND C

NOTES:

- A. 20' WIDE LAKE ACCESS EASEMENT CENTERED ON PROPERTY LINE FOR BOTH ADJOINERS, VOL. 313, PG. 479, AND VOL. 313, PG. 482.
- B. PERMANENT 20' RIGHT-OF-WAY AND EASEMENT TO: JUDITH A. JUTRAS, 0.47 ACRE, VOL. 355, PG. 454, AND GRANTOR.
- C. 20' INGRESS/EGRESS EASEMENT ACROSS THE WEST PART OF THE 0.47 ACRE TO: D. GREGORY GEBHART, 1.935 ACRES, O.R. 163, PG. 149.
- D. 20' RIGHT-OF-WAY TO: JAMES E. DUFF, O.R. 225, PG. 611, AND TO: JUDITH A. JUTRAS, 0.47 ACRE, VOL. 355, PG. 454, AND 0.859 ACRE, VOL. 355, PG. 456.

RETRACEMENT SURVEY OF THE  
 JAMES E. DUFF 29.67 DEED ACRES,  
 OFFICIAL RECORD 119, PAGE 565 AND  
 JAMES E. DUFF 54.06 DEED ACRES,  
 OFFICIAL RECORD 225, PAGE 611  
 VIRGINIA MILITARY SURVEY 9968  
 RICHLAND TOWNSHIP  
 LOGAN COUNTY, OHIO

2 WORKING DAYS  
**BEFORE YOU DIG**  
 CALL TOLL FREE 800-362-2764  
 OHIO UTILITIES PROTECTION SERVICE



SURVEYED BY:  
 JEFFREY L. LEE  
 PROFESSIONAL SURVEYOR 6389  
 MARCH 7, 1995  
 REV. JULY 10, 1995

COPYRIGHT 1995 BY:  
 LEE SURVEYING & MAPPING CO.  
 143 East Columbus Avenue  
 BELLEFONTAINE, OHIO 43311  
 (513) 593-7335

ORIGINAL STAMP IN GREEN 0255 JEDUFF L 2235-1

INDEXED ON MAP  
 9016 1P

Received 6-6-96 OK JCH



# Lee Surveying and Mapping Co., Inc.



Farm Surveys • Lot Surveys • Topography • Subdivisions • Construction Layout

143 EAST COLUMBUS AVENUE  
BELLEFONTAINE, OHIO 43311

(513) 593-7335  
FAX (513) 593-7444

## JAMES E. DUFF 0.489 ACRE TRACT A

Lying in Virginia Military Survey 9968, Richland Township, Logan County, Ohio.

Being a tract out of the State of Ohio Lake Lands, as surveyed by Owen K. Shirk (Surveyor 4271), for the State of Ohio, Department of Natural Resources, Division of Parks, adjacent to the Maude L. Wood James property, dated July 1962, and being more particularly described as follows:

Beginning at a 3 inch metal post found at the southwest corner of the O'Connor's Landing, Inc. 12.25 acre tract (Vol. 353, Pg. 659), on the east line of the said State of Ohio Lake Lands. The said 3 inch post is, also, on the north line of James E. Duff 54.06 acre tract (O.R. 225, Pg. 611).

THENCE, with the said State of Ohio Lake Lands, the following four courses:

- S 06°-27'-34" E, a distance of 56.66 feet to a 5/8 inch iron rod set.
- N 78°-16'-00" W, a distance of 152.21 feet to a 3 inch metal post found.
- S 68°-24'-47" W, a distance of 328.47 feet to a 5/8 inch iron rod set.

S 56°-12'-56" W, a distance of 197.67 feet to a point on the existing shoreline of Indian Lake, passing for reference, a 5/8 inch iron rod set at 170.00 feet.

THENCE, with the said shoreline of Indian Lake, the following three courses:

- N 38°-18'-20" E, a distance of 20.96 feet to a point.
- N 40°-45'-14" E, a distance of 134.31 feet to a point.
- N 65°-47'-34" E, a distance of 266.92 feet to a 5/8 inch iron rod set at the intersection of the existing shoreline and the south line extended of the aforesaid 12.25 acre tract.

THENCE, with the said extended line, N 83°-56'-28" E, a distance of 269.76 feet to the point of beginning.

Containing 0.489 acre.

The basis for bearings is the center-line of Township Road 96 being S 82°-16'-30" W, along the south side of the Rebecca J. Connor 117.11 acre tract, and all other bearings are from angles and distances measured in a field survey by Lee Surveying and Mapping Company on April 6, 1995.

Description prepared by:

Jeffrey I. Lee  
Professional Surveyor 6359  
April 6, 1995  
Revised May 30, 1996



L-2235

ORIGINAL STAMP IN GREEN

INDEXED ON MAP  
9016 2D-1

REC'D 6-8-95 SMY OK ✓



# Lee Surveying and Mapping Co.



Farm Surveys • Lot Surveys • Topography • Subdivisions • Construction Layout

143 EAST COLUMBUS AVENUE  
BELLEFONTAINE, OHIO 43311

(513) 593-7335

JEFFREY I. LEE, P.S.

## JAMES E. DUFF 0.212 ACRE TRACT B

Lying in Virginia Military Survey 9968, Richland Township, Logan County, Ohio.

Being a tract out of the State of Ohio Lake Lands, as surveyed by Owen K. Shirk (Surveyor 4271), for the State of Ohio, Department of Natural Resources, Division of Parks, adjacent to the Maude L. Wood James property, dated July 1962, and being more particularly described as follows:

Beginning at a 3 inch metal post found at the southwest corner of the O'Connor's Landing, Inc. 12.25 acre tract (Vol. 353, Pg. 659), on the east line of the said State of Ohio Lake Lands. The said 3 inch post is, also, on the north line of James E. Duff 54.06 acre tract (O.R. 225, Pg. 611).

THENCE, with the said State of Ohio Lake Lands, the following four courses:

- S 06°-27'-34" E, a distance of 56.66 feet to a 5/8 inch iron rod set.
- N 78°-16'-00" W, a distance of 152.21 feet to a 3 inch metal post found.
- S 68°-24'-47" W, a distance of 328.47 feet to a 5/8 inch iron rod set.
- S 56°-12'-56" W, a distance of 197.67 feet to a point on the existing shoreline of Indian Lake, passing for reference, a 5/8 inch iron rod set at 170.00 feet.

THENCE, with the said shoreline of Indian Lake, the following two courses:

- S 38°-18'-20" W, a distance of 31.06 feet to a point.
- S 77°-46'-17" W, a distance of 26.00 feet to a point at the TRUE POINT OF BEGINNING.

THENCE, with the said State of Ohio Lake Lands, the following three courses:

S 56°-12'-56" W, a distance of 156.64 feet to a 1/2 inch square iron rod found, passing a 5/8 inch iron rod set for reference at 26.64 feet.

- S 77°-08'-08" W, a distance of 285.84 feet to a 3 inch metal post found.
- S 83°-25'-59" W, a distance of 159.07 feet to a point on the shoreline of Indian Lake.

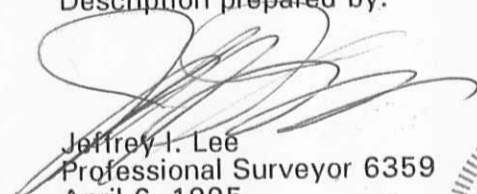
THENCE, with the said shoreline of Indian Lake, the following four courses:

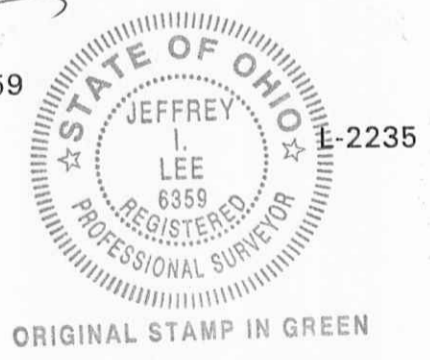
- N 81°-36'-27" E, a distance of 175.01 feet to a point.
- N 73°-17'-38" E, a distance of 188.45 feet to a point.
- N 54°-29'-23" E, a distance of 106.33 feet to a point.
- N 77°-46'-17" E, a distance of 129.63 feet to the point of beginning.

Containing 0.212 acre.

The basis for bearings is the center-line of Township Road 96 being S 82°-16'-30" W, along the south side of the Rebecca J. Connor 117.11 acre tract, and all other bearings are from angles and distances measured in a field survey by Lee Surveying and Mapping Company on April 6, 1995.

Description prepared by:

  
 Jeffrey I. Lee  
 Professional Surveyor 6359  
 April 6, 1995



INDEXED ON MAP  
 9016 2D-2

REC'D 6-8-95 SAM OK ✓



# Lee Surveying and Mapping Co.



Farm Surveys • Lot Surveys • Topography • Subdivisions • Construction Layout

143 EAST COLUMBUS AVENUE  
BELLEFONTAINE, OHIO 43311

(513) 593-7335

JEFFREY I. LEE, P.S.

## JAMES E. DUFF 0.472 ACRE TRACT C

Lying in Virginia Military Survey 9968, Richland Township, Logan County, Ohio.

Being a tract out of the State of Ohio Lake Lands, as surveyed by Owen K. Shirk (Surveyor 4271), for the State of Ohio, Department of Natural Resources, Division of Parks, adjacent to the Maude L. Wood James property, dated July 1962, and being more particularly described as follows:

Beginning at a 3 inch metal post found at the southwest corner of the O'Connor's Landing, Inc. 12.25 acre tract (Vol. 353, Pg. 659), on the east line of the said State of Ohio Lake Lands. The said 3 inch post is, also, on the north line of James E. Duff 54.06 acre tract (O.R. 225, Pg. 611).

THENCE, with the said State of Ohio Lake Lands, the following four courses:

- S 06°-27'-34" E, a distance of 56.66 feet to a 5/8 inch iron rod set.
- N 78°-16'-00" W, a distance of 152.21 feet to a 3 inch metal post found.
- S 68°-24'-47" W, a distance of 328.47 feet to a 5/8 inch iron rod set.
- S 56°-12'-56" W, a distance of 197.67 feet to a point on the existing shoreline of Indian Lake, passing for reference, a 5/8 inch iron rod set at 170.00 feet.

THENCE, with the said shoreline of Indian Lake, the following two courses:

- S 38°-18'-20" W, a distance of 31.06 feet to a point.
- S 77°-46'-17" W, a distance of 26.00 feet to a point.

THENCE, with the said State of Ohio Lake Lands, the following three courses:

- S 56°-12'-56" W, a distance of 156.64 feet to a 1/2 inch square iron rod found, passing a 5/8 inch iron rod set for reference at 26.64 feet.
- S 77°-08'-08" W, a distance of 285.84 feet to a 3 inch metal post found.
- S 83°-25'-59" W, a distance of 159.07 feet to a point on the shoreline of Indian Lake.

THENCE, with the said shoreline of Indian Lake, the following two courses:

- S 81°-36'-27" W, a distance of 14.17 feet to a point.
- S 72°-27'-34" W, a distance of 37.23 feet to a point at the TRUE POINT OF BEGINNING.

THENCE, with the said State of Ohio Lake Lands, the following four courses:

- S 40°-04'-37" W, a distance of 270.32 feet to a 1/2 inch square iron rod found, passing a 5/8 inch iron rod set for reference at 20.32 feet.
- S 10°-27'-10" W, a distance of 287.40 feet to a 5/8 inch iron rod set.
- S 9°-48'-11" E, a distance of 196.33 feet to a 1/2 inch square iron rod found.
- S 46°-27'-08" E, a distance of 170.38 feet to a point on the north line of the D. Gregory Gebhart 1.935 acre tract (O.R. 163, Pg. 149), passing a 5/8 inch iron rod set for reference at 150.00 feet.

THENCE, with the north line of the said 1.935 acre tract, S 83°-54'-18" W, a distance of 3.33 feet to a point on the shore line of Indian Lake.

THENCE, with the said shoreline of Indian Lake, the following eight courses:

- N 70°-13'-33" W, a distance of 105.00 feet to a point.
- N 16°-31'-40" W, a distance of 293.59 feet to a point.
- N 5°-47'-20" E, a distance of 162.39 feet to a point.
- N 25°-13'-24" E, a distance of 131.15 feet to a point.
- N 32°-17'-38" E, a distance of 74.32 feet to a point.
- N 39°-46'-11" E, a distance of 126.67 feet to a point.
- N 43°-35'-38" E, a distance of 46.87 feet to a point.
- N 72°-27'-34" E, a distance of 31.01 feet to the point of beginning.

Containing 0.472 acre.

The basis for bearings is the center-line of Township Road 96 being S 82°-16'-30" W, along the south side of the Rebecca J. Connor 117.11 acre tract, and all other bearings are from angles and distances measured in a field survey by Lee Surveying and Mapping Company on April 6, 1995.



Description prepared by:

*Jeffrey I. Lee*  
Jeffrey I. Lee  
Professional Surveyor 6359  
April 6, 1995

INDEXED ON MAP  
9016 2D-3

ORIGINAL STAMP IN GREEN

L-2235

O'CONNOR'S LANDING, INC.  
 12.25 ACRES  
 VOL. 353, PG. 659

INDIAN LAKE

INDIAN LAKE

**TRACT B**  
 0.212 ACRE

**TRACT A**  
 0.489 ACRE

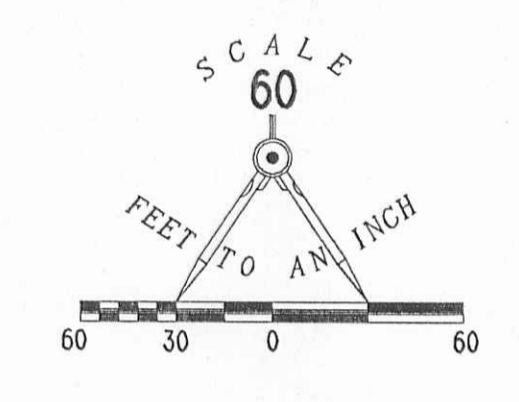
**TRACT C**  
 0.472 ACRE

JAMES E. DUFF  
 54.06 ACRES  
 O.R. 225, PG. 611

JUDITH A. JUTRAS  
 0.47 ACRE  
 VOL. 355, PG. 454

D. GREGORY GEBHART  
 1.935 ACRES  
 O.R. 163, PG. 149

**SURVEY OF THREE TRACTS OUT OF THE  
 STATE OF OHIO LAKE LANDS  
 VIRGINIA MILITARY SURVEY 9968  
 RICHLAND TOWNSHIP  
 LOGAN COUNTY, OHIO**

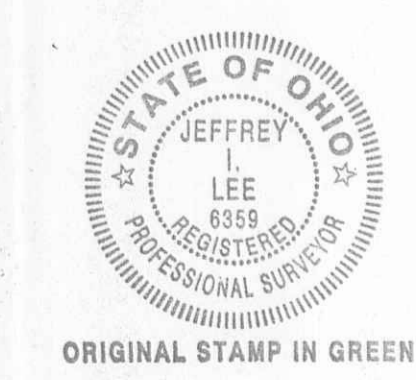


- LEGEND**
- 5/8" IRON ROD FOUND
  - 5/8" METAL PIPE FOUND
  - 3/4" METAL PIPE FOUND
  - ⊠ STONE FOUND
  - ⊠ 1/2" SQUARE IRON ROD FOUND
  - ⊙ 3" METAL POST FOUND
  - 3/4" IRON ROD FOUND
  - ⊠ 1/2" IRON ROD FOUND
  - 5/8" IRON ROD SET

BASIS FOR BEARINGS IS THE CENTER-LINE OF TOWNSHIP ROAD 96, BEING S 82°16'30"W, ALONG THE SOUTH SIDE OF THE REBECCA J. CONNOR 117.11 ACRE TRACT.

- REFERENCES**
- LOGAN COUNTY ENGINEER'S FIELD BOOK 702, PAGES 1 THRU 3.
  - LOGAN COUNTY MAP ROOM DRAWER "R", FILE NUMBERS 3923, 3955, 7012, AND 7350.
  - LOGAN COUNTY MAP ROOM HIGHWAY MAP X 36.
  - STATE OF OHIO SURPLUS PROPERTY MAP SHEET 23 OF 25.

INDEXED ON MAP  
 9/16/96



SURVEYED BY:  
  
 JEFFREY L. LEE  
 PROFESSIONAL SURVEYOR 6369  
 APRIL 6, 1995  
 REV. MAY 30, 1996

COPYRIGHT 1995 BY:  
**LEE SURVEYING & MAPPING CO.**  
 143 East Columbus Avenue  
 BELLEFONTAINE, OHIO 43311  
 (513) 593-7335