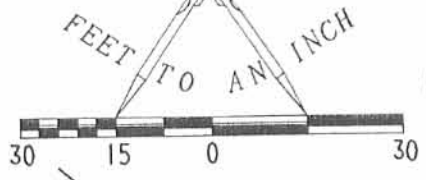


REFERENCES REC'D 4-26-96 SWY

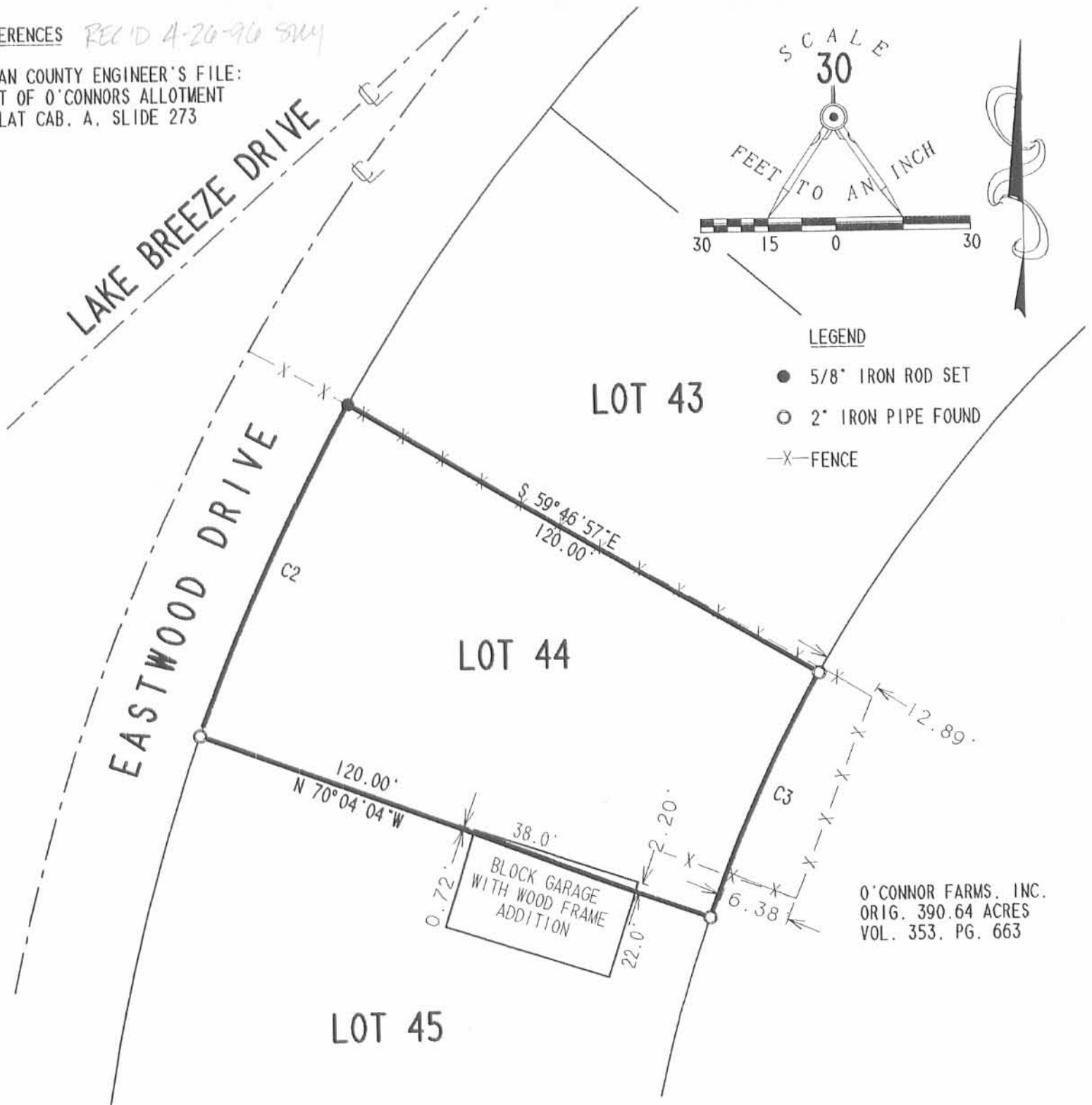
LOGAN COUNTY ENGINEER'S FILE:  
 PLAT OF O'CONNORS ALLOTMENT  
 PLAT CAB. A, SLIDE 273

SCALE  
 30



LEGEND

- 5/8" IRON ROD SET
- 2" IRON PIPE FOUND
- X- FENCE



O'CONNOR FARMS, INC.  
 ORIG. 390.64 ACRES  
 VOL. 353, PG. 663

CURVE	DELTA ANGLE	RADIUS	ARC	TANGENT	CHORD	CHORD BEARING
C 1	38° 42' 27"	470.82'	318.07'	165.38'	312.06'	N 29° 00' 03" E
C 2	10° 17' 07"	445.82'	80.03'	40.12'	79.92'	N 25° 04' 30" E
C 3	10° 17' 07"	325.82'	58.49'	29.32'	58.41'	S 25° 04' 30" W

RETRACEMENT SURVEY OF LOT 44 OF  
 OF O'CONNORS ALLOTMENT  
 PLAT CABINET A. SLIDE 273  
 VIRGINIA MILITARY SURVEY 13393  
 RICHLAND TOWNSHIP  
 LOGAN COUNTY, OHIO

INDEXED ON MAP  
 9068 IP



SURVEYED BY:

*(Signature)*  
 JEFFREY I. LEE  
 PROFESSIONAL SURVEYOR 6359  
 APRIL 19, 1996

COPYRIGHT 1996 BY:  
 LEE SURVEYING & MAPPING CO., INC.  
 143 East Columbus Avenue  
 BELLEFONTAINE, OHIO 43311  
 (513) 593-7335

2 WORKING DAYS  
**BEFORE YOU DIG**  
 CALL TOLL FREE **800-362-2764**  
 OHIO UTILITIES PROTECTION SERVICE.

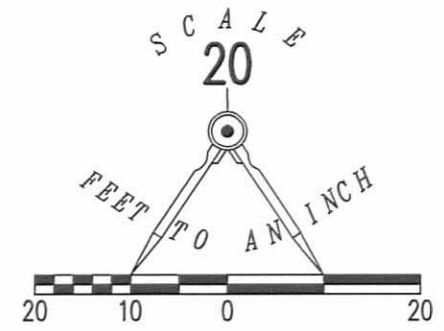
ORIGINAL STAMP IN GREEN

D 281 ARFOLEY

L-2388-4

Received 7/27/12 OK GH

CURVE	DELTA ANGLE	RADIUS	ARC LENGTH	TANGENT	CHORD BEARING	CHORD LENGTH
C1	10°17'53"	325.82'	58.56'	29.36'	S 14°57'19" W	58.48'
C2	10°17'53"	445.82'	80.13'	40.17'	S 14°57'19" W	80.02'



O'CONNOR ALLOTMENT  
PLAT CABINET A, SLIDE 273

EASTWOOD DRIVE (50')

LOT 44

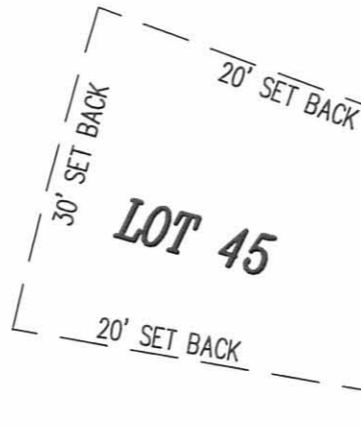
S 69°53'45" E  
120.00'

0.8' ENCROACHMENT

2.3' ENCROACHMENT

BLOCK GARAGE

LOT 45



120.00'  
N 80°11'38" W  
BASIS FOR BEARINGS

LOT 46

O'CONNOR FARMS, INC.  
62.00 ACRE TRACT  
VOL. 353, PG. 663  
TRACT I

RETRACEMENT OF  
LOT 45  
O'CONNOR ALLOTMENT  
PLAT CABINET A, SLIDE 273  
VIRGINIA MILITARY SURVEY 13393  
RICHLAND TOWNSHIP  
LOGAN COUNTY, OHIO  
SURVEYED BY:

*William K. Bruce*

WILLIAM K. BRUCE  
PROFESSIONAL SURVEYOR 7437  
JULY 25, 2012



ORIGINAL STAMP IN GREEN

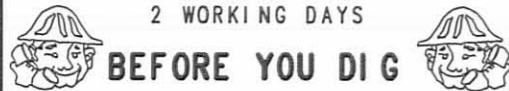
COPYRIGHT 2012 BY:  
LEE SURVEYING & MAPPING CO., INC.  
117 North Madriver Street  
BELLEFONTAINE, OHIO 43111  
(937) 593-7335  
WWW.LSMINC.US  
surveys@lsminc.us

ADW D0712 53660712 L-5366-3

**ZONING NOTE:**

LOT 45 OF O'CONNOR ALLOTMENT IS ZONED R-2, MEDIUM DENSITY RESIDENTIAL DISTRICT.

2 WORKING DAYS



CALL TOLL FREE 800-362-2764

OHIO UTILITIES PROTECTION SERVICE

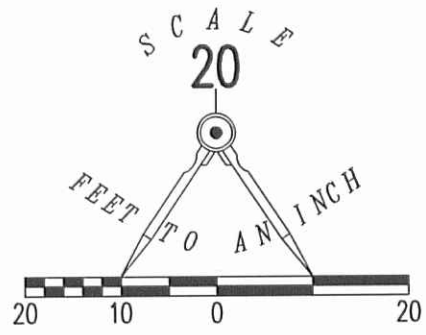
INDEXED ON MAP  
9068 ZP



**APPROVED**

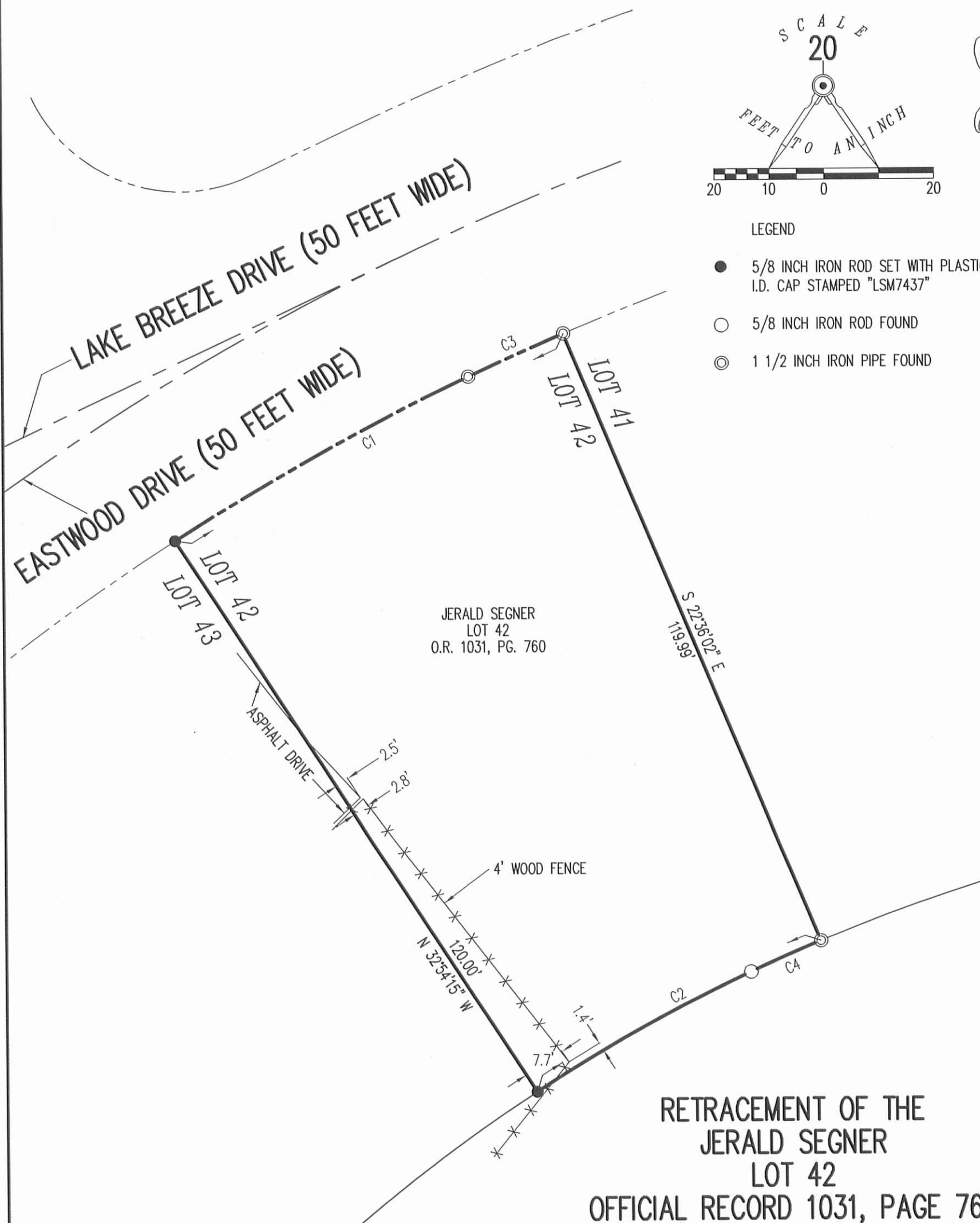
3-21-14

CURVE	DELTA ANGLE	RADIUS	ARC LENGTH	TANGENT	CHORD BEARING	CHORD LENGTH
C1	09°45'28"	470.82'	80.18'	40.19'	N 62°14'57" E	80.09'
C2	10°18'28"	325.82'	58.62'	29.39'	S 62°14'12" W	58.54'
C3	02°18'41"	470.82'	18.99'	9.50'	N 65°58'20" E	18.99'
C4	02°26'59"	325.82'	13.93'	6.97'	S 66°09'56" W	13.93'



LEGEND

- 5/8 INCH IRON ROD SET WITH PLASTIC I.D. CAP STAMPED "LSM7437"
- 5/8 INCH IRON ROD FOUND
- ⊙ 1 1/2 INCH IRON PIPE FOUND



RETRACEMENT OF THE  
JERALD SEGNER  
LOT 42  
OFFICIAL RECORD 1031, PAGE 760  
O'CONNOR ALLOTMENT  
PLAT CABINET A, SLIDE 273  
RICHLAND TOWNSHIP  
LOGAN COUNTY, OHIO  
SURVEYED BY:



*William K. Bruce*  
WILLIAM K. BRUCE  
PROFESSIONAL SURVEYOR 7437  
MARCH 19, 2014

COPYRIGHT 2014 BY:  
LEE SURVEYING & MAPPING CO., INC.  
117 North Madriver Street  
BELLEFONTAINE, OHIO 43311  
(937) 593-7335  
WWW.LSMINC.US  
surveys@lsminc.us

2 WORKING DAYS  
**BEFORE YOU DIG**  
CALL TOLL FREE **800-362-2764**  
OHIO UTILITIES PROTECTION SERVICE

INDEXED ON MAP  
9068 3P