



REC'D 12-16-98 SMY OK ✓

Lee Surveying and Mapping Co., Inc.



Land Surveys • Topography • Subdivisions • Construction Layout

117 N. Madriver Street
Bellefontaine OH 43311

Phone: (937) 593-7335
Fax: (937) 593-7444

ANDRE' G. DEPEW 5.000 ACRES TRACT A

Lying in the Virginia Military Survey 9973, Richland Township, Logan County, Ohio.

Being out of the Andre' G. Depew and Katherine S. Depew original 81.20 acre tract as deeded and described in Official Record 284, Page 879 First Parcel of the Logan County Records of Deeds and being more particularly described as follows:

Beginning at a 5/8 inch iron rod found at the northeast corner of Virginia Military Survey 9973 and the center-line extended of Ohio Route 273, at Point of Intersection Station 310+64.60.

THENCE, with the north line of Virginia Military Survey 9973, the center-line extended and the center-line of Ohio Route 273, S 84°-18'-00" W, a distance of 1118.08 feet to a MAG nail set at Point of Intersection Station 299+45.3.

THENCE, with the north line of Virginia Military Survey 9973 and the center-line of Ohio Route 273, S 83°-49'-27" W, a distance of 102.03 feet to a MAG nail set at the TRUE POINT OF BEGINNING.

THENCE, S 5°-42'-00" E, a distance of 821.15 feet to a 5/8 inch iron rod set, passing a 5/8 inch iron rod set at 30.40 feet.

THENCE, S 84°-18'-00" W, a distance of 265.00 feet to a 5/8 inch iron rod set.

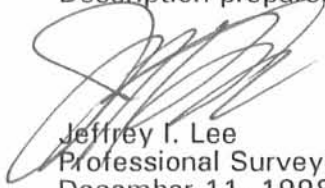
THENCE, N 5°-47'-00" W, a distance of 818.94 feet to a MAG nail set on the center-line of Ohio Route 273, passing a 5/8 inch iron rod set at 788.94 feet.

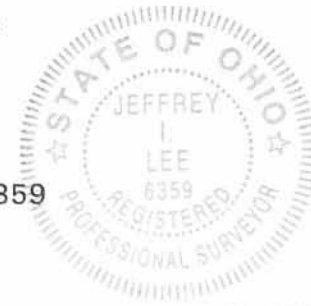
THENCE, with the north line of Virginia Military Survey 9973 and the center-line of Ohio Route 273, N 83°-49'-27" E, a distance of 266.20 feet to the point of beginning.

Containing 5.000 acres, of which 0.186 acre is within the highway right-of-way.

The basis for bearings is the center-line of Ohio Route 273 at the northeast corner of Virginia Military Survey 9973, being S 84°-18'-00" W, and all other bearings are from angles and distances measured in a field survey by Lee Surveying and Mapping Co., Inc. on December 10, 1998.

Description prepared by:


Jeffrey I. Lee
Professional Surveyor 6359
December 11, 1998



L-2607

ORIGINAL STAMP IN GREEN

9172 1D-1



REC'D 12-16-98 smy ok ✓

Lee Surveying and Mapping Co., Inc.



Land Surveys • Topography • Subdivisions • Construction Layout

Phone: (937) 593-7335
Fax: (937) 593-7444

117 N. Madriver Street
Bellefontaine OH 43311

ANDRE' G. DEPEW 5.492 ACRES TRACT B

Lying in the Virginia Military Survey 9973, Richland Township, Logan County, Ohio.

Being out of the Andre' G. Depew and Katherine S. Depew original 81.20 acre tract as deeded and described in Official Record 284, Page 879 First Parcel of the Logan County Records of Deeds and being more particularly described as follows:

Beginning at a 5/8 inch iron rod found at the northeast corner of Virginia Military Survey 9973 and the center-line extended of Ohio Route 273, at Point of Intersection Station 310+64.60.

THENCE, with the north line of Virginia Military Survey 9973, the center-line extended and the center-line of Ohio Route 273, S 84°-18'-00" W, a distance of 955.11 feet to a MAG nail found at the TRUE POINT OF BEGINNING.

THENCE, with the lines of the Nicolas Echeverria 2.860 acre tract (O.R. 350, Pg. 925) the following two courses:

S 5°-42'-00" E, a distance of 626.50 feet to a 5/8 inch iron rod found, passing a 5/8 inch iron rod found at 30.00 feet.

N 84°-18'-00" E, a distance of 109.43 feet to a 5/8 inch iron rod set.

THENCE, S 5°-42'-00" E, a distance of 195.50 feet to a 5/8 inch iron rod set.

THENCE, S 84°-18'-00" W, a distance of 374.42 feet to a 5/8 inch iron rod set.

THENCE, N 5°-42'-00" W, a distance of 821.15 feet to a MAG nail set on the center-line of Ohio Route 273, passing a 5/8 inch iron rod set at 790.75 feet.

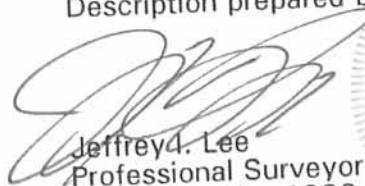
THENCE, with the north line of Virginia Military Survey 9973 and the center-line of Ohio Route 273, N 83°-49'-27" E, a distance of 102.03 feet to a MAG nail set, at Point of Intersection Station 299+45.3.

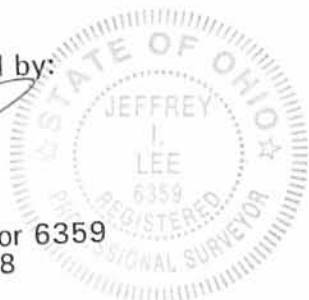
THENCE, with the north line of Virginia Military Survey 9973 and the center-line of Ohio Route 273, N 84°-18'-00" E, a distance of 162.97 feet to the point of beginning.

Containing 5.492 acres, of which 0.184 acre is within the highway right-of-way.

The basis for bearings is the center-line of Ohio Route 273 at the northeast corner of Virginia Military Survey 9973, being S 84°-18'-00" W, and all other bearings are from angles and distances measured in a field survey by Lee Surveying and Mapping Co., Inc. on December 10, 1998.

Description prepared by:


Jeffrey Lee
Professional Surveyor 6359
December 11, 1998



L-2607

9172 1D2

ORIGINAL STAMP IN GREEN



REC'D 12-16-98 SMY OK

Lee Surveying and Mapping Co., Inc.



Land Surveys • Topography • Subdivisions • Construction Layout

117 N. Madriver Street
Bellefontaine OH 43311

Phone: (937) 593-7335
Fax: (937) 593-7444

ANDRE' G. DEPEW 5.492 ACRES TRACT C

Lying in the Virginia Military Survey 9973, Richland Township, Logan County, Ohio.

Being out of the Andre' G. Depew and Katherine S. Depew original 81.20 acre tract as deeded and described in Official Record 284, Page 879 First Parcel of the Logan County Records of Deeds and being more particularly described as follows:

Beginning at a 5/8 inch iron rod found at the northeast corner of Virginia Military Survey 9973 and the center-line extended of Ohio Route 273, at Point of Intersection Station 310+64.60.

THENCE, with the north line of Virginia Military Survey 9973, the center-line extended and the center-line of Ohio Route 273, S 84°-18'-00" W, a distance of 471.26 feet to a MAG nail set at the TRUE POINT OF BEGINNING.

THENCE, S 5°-42'-00" E, a distance of 822.00 feet to a 5/8 inch iron rod set, passing a 5/8 inch iron rod set at 30.00 feet.

THENCE, S 84°-18'-00" W, a distance of 374.42 feet to a 5/8 inch iron rod set.

THENCE, N 5°-42'-00" W, a distance of 195.50 feet to a 5/8 inch iron rod set.

THENCE, with the south line and the south line extended of the Nicolas Echeverria 2.860 acre tract (O.R. 350, Pg. 325), N 84°-18'-00" E, a distance of 109.42 feet to a 5/8 inch iron rod set.

THENCE, N 5°-42'-00" W, a distance of 626.50 feet to a MAG nail set on the center-line of Ohio Route 273, passing a 5/8 inch iron rod set at 596.50 feet.

THENCE, with the north line of Virginia Military Survey 9973 and the center-line of Ohio Route 273, N 84°-18'-00" E, a distance of 265.00 feet to the point of beginning.

Containing 5.492 acres, of which 0.183 acre is within the highway right-of-way.

The basis for bearings is the center-line of Ohio Route 273 at the northeast corner of Virginia Military Survey 9973, being S 84°-18'-00" W, and all other bearings are from angles and distances measured in a field survey by Lee Surveying and Mapping Co., Inc. on December 10, 1998.

Description prepared by:

Jeffrey J. Lee
Professional Surveyor 6359
December 11, 1998



L-2607

ORIGINAL STAMP IN GREEN

9172 15-3



REC'D 12-16-98 SMY OK ✓

Lee Surveying and Mapping Co., Inc.



Land Surveys • Topography • Subdivisions • Construction Layout

117 N. Madriver Street
Bellefontaine OH 43311

Phone: (937) 593-7335
Fax: (937) 593-7444

ANDRE' G. DEPEW 5.119 ACRES TRACT D

Lying in the Virginia Military Survey 9973, Richland Township, Logan County, Ohio.

Being out of the Andre' G. Depew and Katherine S. Depew original 81.20 acre tract as deeded and described in Official Record 284, Page 879 First Parcel of the Logan County Records of Deeds and being more particularly described as follows:

Beginning at a 5/8 inch iron rod found at the northeast corner of Virginia Military Survey 9973 and the center-line extended of Ohio Route 273, at Point of Intersection Station 310+64.60.

THENCE, with the north line of Virginia Military Survey 9973, the center-line extended and the center-line of Ohio Route 273, S 84°-18'-00" W, a distance of 200.00 feet to a MAG nail set at the TRUE POINT OF BEGINNING.

THENCE, S 5°-42'-00" E, a distance of 822.00 feet to a 5/8 inch iron rod set, passing a 5/8 inch iron rod set at 35.04 feet.

THENCE, S 84°-18'-00" W, a distance of 271.26 feet to a 5/8 inch iron rod set.

THENCE, N 5°-42'-00" W, a distance of 822.00 feet to a MAG nail set on the center-line of Ohio Route 273, passing a 5/8 inch iron rod set at 792.00 feet.

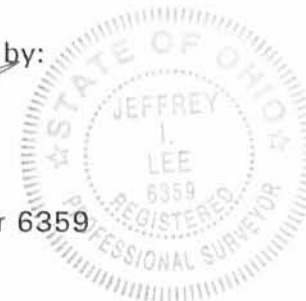
THENCE, with the north line of Virginia Military Survey 9973, the center-line of Ohio Route 273 and the center-line extended, N 84°-18'-00" E, a distance of 271.26 feet to the point of beginning.

Containing 5.119 acres, of which 0.192 acre is within the highway right-of-way.

The basis for bearings is the center-line of Ohio Route 273 at the northeast corner of Virginia Military Survey 9973, being S 84°-18'-00" W, and all other bearings are from angles and distances measured in a field survey by Lee Surveying and Mapping Co., Inc. on December 10, 1998.

Description prepared by:

Jeffrey I. Lee
Professional Surveyor 6359
December 11, 1998



L-2607

ORIGINAL STAMP IN GREEN

9172 1D-4



RECID 12-16-98 SMY OIL ✓

Lee Surveying and Mapping Co., Inc.



Land Surveys • Topography • Subdivisions • Construction Layout

117 N. Madriver Street
Bellefontaine OH 43311

Phone: (937) 593-7335
Fax: (937) 593-7444

ANDRE' G. DEPEW 28.046 ACRES TRACT E

Lying in the Virginia Military Survey 9973, Richland Township, Logan County, Ohio.

Being out of the Andre' G. Depew and Katherine S. Depew original 81.20 acre tract as deeded and described in Official Record 284, Page 879 First Parcel of the Logan County Records of Deeds and being more particularly described as follows:

Beginning at a 5/8 inch iron rod found at the northeast corner of Virginia Military Survey 9973 and the center-line extended of Ohio Route 273, at Point of Intersection Station 310 + 64.60.

THENCE, with the north line of Virginia Military Survey 9973, the center-line extended and the center-line of Ohio Route 273, S 84°-18'-00" W, a distance of 1118.08 feet to a MAG nail set at Point of Intersection Station 299 + 45.3.

THENCE, with the north line of Virginia Military Survey 9973 and the center-line of Ohio Route 273, S 83°-49'-27" W, a distance of 368.23 feet to a MAG nail set at the TRUE POINT OF BEGINNING.

THENCE, S 5°-47'-00" E, a distance of 818.94 feet to a 5/8 inch iron rod set, passing a 5/8 inch iron rod set at 30.00 feet.

THENCE, N 84°-18'-00" E, a distance of 639.42 feet to a 5/8 inch iron rod set.

THENCE, S 5°-42'-00" E, a distance of 1323.84 feet to a 5/8 inch iron rod set.

THENCE, with the north line of the Miriam J. Forsythe Trustee original 98.36 acre tract (O.R. 220 Pg. 932), S 82°-51'-44" W, a distance of 802.40 feet to a 5/8 inch iron rod set.

THENCE, with the east lines of the Joe D. Hoylman 1.00 acre Tract III and the 68 acre Tract I (O.R. 355 Pg. 700) and the Elizabeth L. Castle 3.00 acre tract (O.R. 301 Pg. 967), N 6°-10'-00" W, a distance of 2161.51 feet to a PK nail found on the center-line of Ohio Route 273, passing a 5/8 inch iron rod found at 2131.48 feet.

THENCE, with the north line of Virginia Military Survey 9973, the center-line of Ohio Route 273, N 83°-49'-27" E, a distance of 179.15 feet to the point of beginning.

Containing 28.046 acres, of which 0.124 acre is within the highway right-of-way.

The basis for bearings is the center-line of Ohio Route 273 at the northeast corner of Virginia Military Survey 9973, being S 84°-18'-00" W, and all other bearings are from angles and distances measured in a field survey by Lee Surveying and Mapping Co., Inc. on December 10, 1998.

Description prepared by:

Jeffrey I. Lee
Professional Surveyor 6359
December 11, 1998



L-2607

9172 10-5

ORIGINAL STAMP IN GREEN



REC'D 12-16-98 SMJ OK ✓

Lee Surveying and Mapping Co., Inc.



Land Surveys • Topography • Subdivisions • Construction Layout

117 N. Madriver Street
Bellefontaine OH 43311

Phone: (937) 593-7335
Fax: (937) 593-7444

ANDRE' G. DEPEW 29.826 ACRES TRACT F

Lying in the Virginia Military Survey 9973, Richland Township, Logan County, Ohio.

Being out of the Andre' G. Depew and Katherine S. Depew original 81.20 acre tract as deeded and described in Official Record 284, Page 879 First Parcel and all of 0.80 acre tract Second Parcel of the Logan County Records of Deeds and being more particularly described as follows:

Beginning at a 5/8 inch iron rod found at the northeast corner of Virginia Military Survey 9973 and the center-line extended of Ohio Route 273, at Point of Intersection Station 310+64.60.

THENCE, with the west line of Virginia Military Survey 9973 and the west line of the James M. Miller Trustee 39.57 acre tract (O.R. 375, Pg. 348), S 6°-18'-56" E, a distance of 2124.16 feet to a 5/8 inch iron rod set, passing a 5/8 inch iron rod set at 63.73 feet.

THENCE, with the north line of the Miriam J. Forsythe Trustee original 98.36 acre tract (O.R. 220 Pg. 932), S 82°-51'-44" W, a distance of 868.78 feet to a 5/8 inch iron rod set.

THENCE, N 5°-42'-00" W, a distance of 1323.84 feet to a 5/8 inch iron rod set.

THENCE, N 84°-18'-00" E, a distance of 645.68 feet to a 5/8 inch iron rod set.

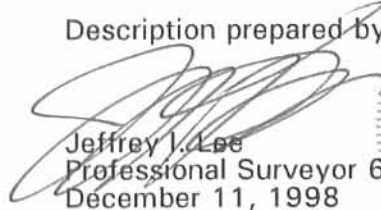
THENCE, N 5°-42'-00" W, a distance of 822.00 feet to a MAG nail set on the center-line of Ohio Route 273, passing a 5/8 inch iron rod set at 786.96 feet.

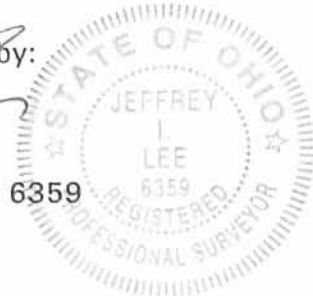
THENCE, with the north line of Virginia Military Survey 9973, the center-line of Ohio Route 273 and the center-line extended, N 84°-18'-00" E, a distance of 200.00 feet to the point of beginning.

Containing 29.826 acres, of which 0.217 acre is within the highway right-of-way.

The basis for bearings is the center-line of Ohio Route 273 at the northeast corner of Virginia Military Survey 9973, being S 84°-18'-00" W, and all other bearings are from angles and distances measured in a field survey by Lee Surveying and Mapping Co., Inc. on December 10, 1998.

Description prepared by:


Jeffrey I. Lee
Professional Surveyor 6359
December 11, 1998



L-2607

ORIGINAL STAMP IN GREEN

9172 12-16



REC'D 12-16-98 SWY OK ✓

Lee Surveying and Mapping Co., Inc.



Land Surveys • Topography • Subdivisions • Construction Layout

117 N. Madriver Street
Bellefontaine OH 43311

Phone: (937) 593-7335
Fax: (937) 593-7444

ANDRE' G. DEPEW 0.288 ACRE

Lying in the Virginia Military Survey 9973, Richland Township, Logan County, Ohio.

Being out of the Andre' G. Depew and Katherine S. Depew original 81.20 acre tract as deeded and described in Official Record 284, Page 879 First Parcel of the Logan County Records of Deeds and being more particularly described as follows:

Beginning at a 5/8 inch iron rod found at the northeast corner of Virginia Military Survey 9973 and the center-line extended of Ohio Route 273, at Point of Intersection Station 310 + 64.60.

THENCE, with the north line of Virginia Military Survey 9973, the center-line extended and the center-line of Ohio Route 273, S 84°-18'-00" W, a distance of 736.26 feet to a MAG nail set at the TRUE POINT OF BEGINNING.

THENCE, S 5°-42'-00" E, a distance of 626.50 feet to a 5/8 inch iron rod set, passing a 5/8 inch iron rod set at 30.00 feet.

THENCE, S 84°-18'-00" W, a distance of 20.00 feet to a 5/8 inch iron rod found.

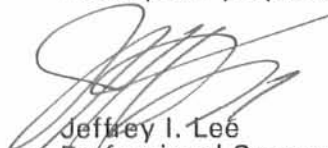
THENCE, with the east line of the Nicolas Echeverria 2.860 acre tract (O.R. 350, Pg. 925), N 5°-42'-00" W, a distance of 626.50 feet to a MAG nail found on the center-line of Ohio Route 273, passing a 5/8 inch iron rod set at 596.50 feet.

THENCE, with the north line of Virginia Military Survey 9973 and the center-line of Ohio Route 273, N 84°-18'-00" E, a distance of 20.00 feet to the point of beginning.

Containing 0.288 acre, of which 0.014 acre is within the highway right-of-way.

The basis for bearings is the center-line of Ohio Route 273 at the northeast corner of Virginia Military Survey 9973, being S 84°-18'-00" W, and all other bearings are from angles and distances measured in a field survey by Lee Surveying and Mapping Co., Inc. on December 10, 1998.

Description prepared by:


Jeffrey I. Lee
Professional Surveyor 6359
December 11, 1998

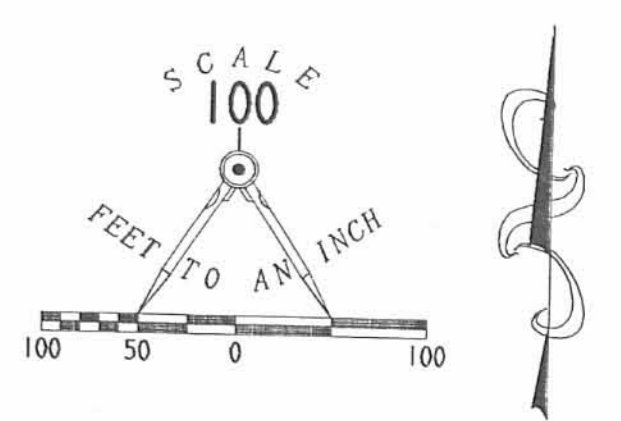


L-2607

ORIGINAL STAMP IN GREEN

9172.1D-7

REC'D 12-16-98 SMJ CLK



REFERENCES
LOGAN COUNTY ENGINEER'S FILES:
ODOT MAP FOR S.R. 273
R 991
R 1373

POINT OF INTERSECTION
STATION 310+64.60

V.M.S. 9974
V.M.S. 12074

VIRGINIA MILITARY SURVEY 12074

ELIZABETH L. CASTLE
3.00 ACRES
O.R. 301, PG. 967

JOE D. HOYLMAN AND
ELIZABETH L. CASTLE-HOYLMAN
ORIGINAL 68 ACRES
O.R. 355, PG. 700
TRACT I

N 05°47'00"W
2161.51'

1.00 ACRE
TRACT III

2 WORKING DAYS
BEFORE YOU DIG
CALL TOLL FREE 800-362-2764
OHIO UTILITIES PROTECTION SERVICE

D-338 ADEPEW2 ADEPEW.ASC L-2607-2

STATION 299+45.3
STATION 300+00

A
5.000 ACRES
OF WHICH 0.186 ACRE
IS IN HIGHWAY RIGHT-OF-WAY

B
5.492 ACRES
OF WHICH 0.184 ACRE
IS IN HIGHWAY RIGHT-OF-WAY

0.288 ACRE
OF WHICH 0.014 ACRE
IS IN HIGHWAY RIGHT-OF-WAY

NICOLAS ECHEVERRIA
2.860 ACRES
O.R. 350, PG. 925

C
5.492 ACRES
OF WHICH 0.183 ACRE
IS IN HIGHWAY RIGHT-OF-WAY

D
5.119 ACRES
OF WHICH 0.192 ACRE
IS IN HIGHWAY RIGHT-OF-WAY

E
28.046 ACRES
OF WHICH 0.124 ACRE
IS IN HIGHWAY RIGHT-OF-WAY

ANDRE' G. DEPEW AND
KATHERINE S. DEPEW
ORIGINAL 81.20 ACRES
O.R. 284, PG. 879
FIRST PARCEL

F
29.826 ACRES
OF WHICH 0.217 ACRE
IS IN HIGHWAY RIGHT-OF-WAY

MIRIAM J. FORSYTHE TRUSTEE
ORIGINAL 98.36 ACRES
O.R. 220 PG. 932

ANDRE' G. DEPEW AND
KATHERINE S. DEPEW
ORIGINAL 81.20 ACRES
O.R. 284, PG. 879
FIRST PARCEL

MILAN G. CARNES
1.00 ACRES
O.R. 56, PG. 47

- LEGEND
- 5/8" IRON ROD SET
 - MAG NAIL SET
 - CONCRETE R/W MONUMENT FOUND
 - 5/8" IRON ROD FOUND
 - MAG NAIL FOUND
 - ⊙ PK NAIL FOUND

JAMES M. MILLER AND
JOY K. MILLER TRUSTEES
39.57 ACRES
O.R. 375, PG. 348

SURVEY OF 7 TRACTS
OUT OF THE
ANDRE' G. DEPEW & KATHERINE S. DEPEW
ORIGINAL 81.20 ACRE AND 0.80 ACRE TRACTS
OFFICIAL RECORD 284, PAGE 879
VIRGINIA MILITARY SURVEY 9973
RICHLAND TOWNSHIP
LOGAN COUNTY, OHIO



SURVEYED BY:
Jeffrey I. Lee
JEFFREY I. LEE
PROFESSIONAL SURVEYOR 6339
DECEMBER 9, 1998

COPYRIGHT 1998 BY:
LEE SURVEYING & MAPPING CO., INC.
117 North Madriver Street
BELLEFONTAINE, OHIO 43311
(937) 593-7335

91721P

REC'D 1-9-98 Sky 20900



Lee Surveying and Mapping Co., Inc.



Farm Surveys • Lot Surveys • Topography • Subdivisions • Construction Layout

117 NORTH MADRIVER STREET
BELLEFONTAINE, OHIO 43311

(937) 593-7335
FAX (937) 593-7444

DEPEW 2.860 ACRES

Lying in Virginia Military Survey 9973, Richland Township, Logan County, Ohio.

Being out of the Andre' G. Depew and Katherine S. Depew original 82.00 acre tract as deeded and described in Official Record 284, Page 879 of the Logan County Records of Deeds and being more particularly described as follows:

Beginning at a 5/8 inch iron rod set on the northeast corner of Virginia Military Survey 9973 and the center-line extended of Ohio Route 273, which is also Point of Intersection Stationing 310+64.60.

THENCE, with the north line of Virginia Military Survey 9973 and the center-line of Ohio Route 273, (60 feet wide), S 84°-18'-00" W, a distance of 756.26 feet to a MAG nail set at the TRUE POINT OF BEGINNING.

THENCE, S 5°-42'-00" E, a distance of 626.50 feet to a 5/8 inch iron rod set, passing a 5/8 inch iron rod set at 30.00 feet.

THENCE, S 84°-18'-00" W, a distance of 198.85 feet to a 5/8 inch iron rod set.

THENCE, N 5°-42'-00" W, a distance of 626.50 feet to a MAG nail set on the center-line of Ohio Route 273, passing a 5/8 inch iron rod set at 596.50 feet.

THENCE, with the north line of Virginia Military Survey 9973 and the center-line of Ohio Route 273, N 84°-18'-00" E, a distance of 198.85 feet to the point of beginning.

Containing 2.860 acres, of which 0.137 acre is within the highway right-of-way.

The basis for bearings is the center-line of Ohio Route 273, being S 84°-18'-00" W, and all other bearings are from angles and distances measured in a field survey by Lee Surveying and Mapping Co., Inc. on January 8, 1998.



ORIGINAL STAMP IN GREEN

Description prepared by:

Jeffrey I. Lee
Jeffrey I. Lee
Professional Surveyor 6359
January 9, 1997

L-2607

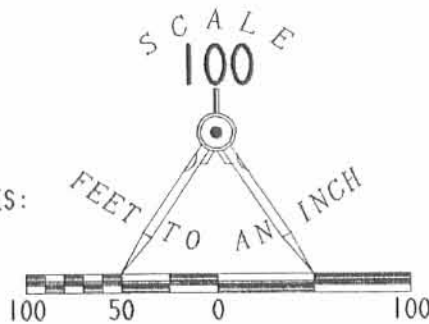
INDEXED ON MAP
9172 2D

LEGEND

- 5/8" IRON ROD SET
- ⊙ MAG NAIL SET
- ⊙ CONCRETE R/W MONUMENT FOUND

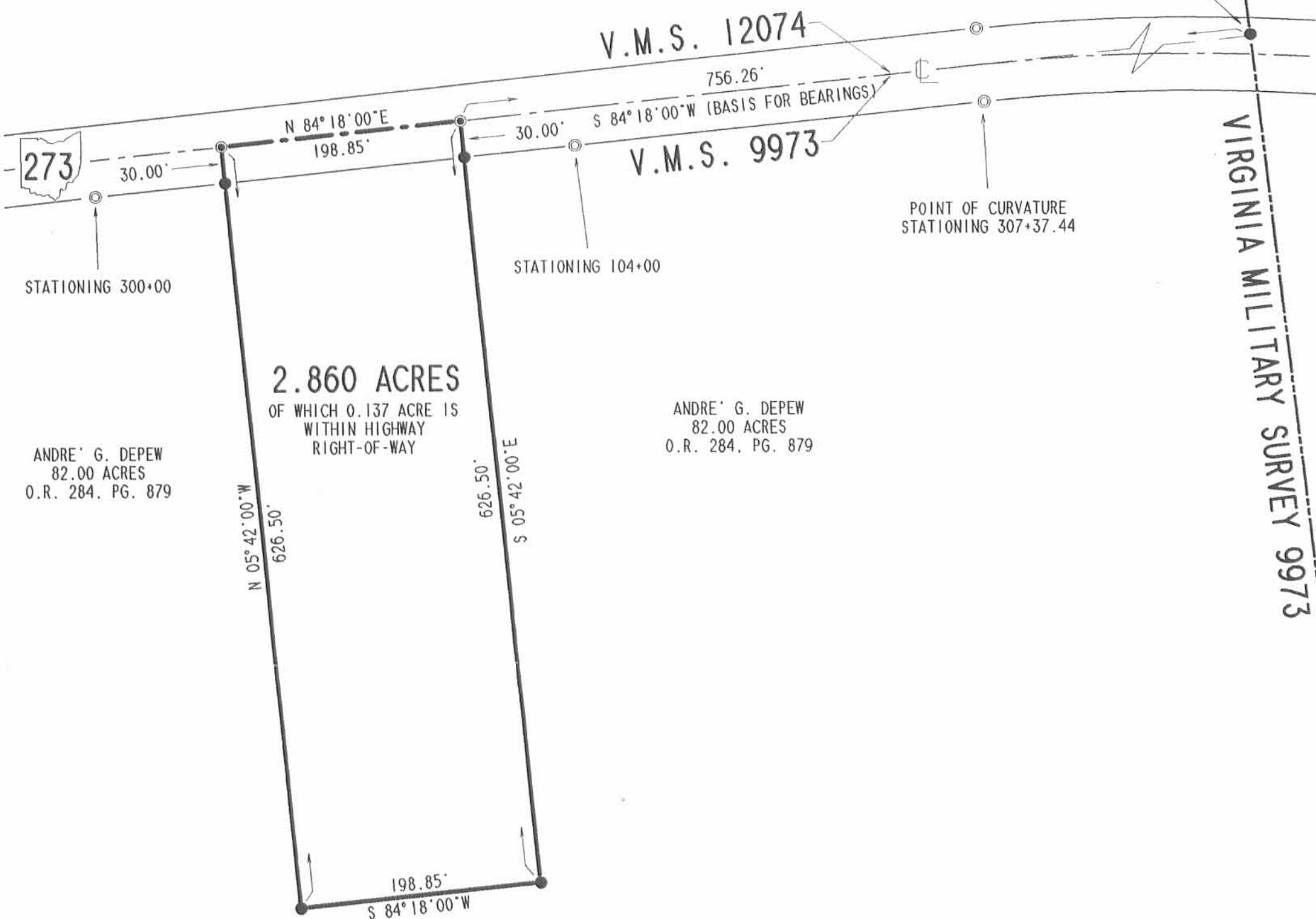
REFERENCES

LOGAN COUNTY ENGINEER'S FILES:
 ODOT MAP FOR S.R. 273
 R 991
 R 1373



POINT OF INTERSECTION
 STATIONING 310+64.60

V.M.S. 9974
 V.M.S. 12074



2.860 ACRES

OF WHICH 0.137 ACRE IS
 WITHIN HIGHWAY
 RIGHT-OF-WAY

ANDRE' G. DEPEW
 82.00 ACRES
 O.R. 284, PG. 879

ANDRE' G. DEPEW
 82.00 ACRES
 O.R. 284, PG. 879

SURVEY OF 2.860 ACRES
 OUT OF THE
 ANDRE' G. DEPEW & KATHERINE S. DEPEW
 ORIGINAL 82.0 ACRE TRACT
 OFFICIAL RECORD 284, PAGE 879
 VIRGINIA MILITARY SURVEY 9973
 RICHLAND TOWNSHIP
 LOGAN COUNTY, OHIO



ORIGINAL STAMP IN GREEN

SURVEYED BY:

Jeffrey I. Lee
 JEFFREY I. LEE
 PROFESSIONAL SURVEYOR 6359
 JANUARY 8, 1998

COPYRIGHT 1998 BY:
 LEE SURVEYING & MAPPING CO., INC.
 117 North Madriver Street
 BELLEFONTAINE, OHIO 43311
 (937) 593-7335

2 WORKING DAYS
 BEFORE YOU DIG
 CALL TOLL FREE 800-362-2764
 OHIO UTILITIES PROTECTION SERVICE.

INDEXED ON MAP
 9172 2P



Lee Surveying and Mapping Co., Inc.



Farm Surveys • Lot Surveys • Topography • Subdivisions • Construction Layout

117 NORTH MADRIVER STREET
BELLEFONTAINE, OHIO 43311

(937) 593-7335
FAX (937) 593-7444

DEPEW 20 FEET WIDE INGRESS - EGRESS EASEMENT

Lying in Virginia Military Survey 9973, Richland Township, Logan County, Ohio.

Being a 20 feet wide ingress/egress easement over the Andre' G. Depew and Katherine S. Depew original 82.00 acre tract as deeded and described in Official Record 284, Page 879 of the Logan County Records of Deeds and being more particularly described as follows:


Beginning at a 5/8 inch iron rod set on the northeast corner of Virginia Military Survey 9973 and the center-line extended of Ohio Route 273, which is also Point of Intersection Stationing 310 + 64.60.

THENCE, with the north line of Virginia Military Survey 9973 and the center-line of Ohio Route 273, (60 feet wide), S 84°-18'-00" W, a distance of 746.26 feet to a point at the TRUE POINT OF BEGINNING.

THENCE, with the center-line of the 20 feet wide easement, parallel and 10 feet distant from the east line of the above 2.860 acre tract, S 5°-42'-00" E, a distance of 626.50 feet to a point at the terminus of this easement.

The basis for bearings is the center-line of Ohio Route 273, being S 84°-18'-00" W, and all other bearings are from angles and distances measured in a field survey by Lee Surveying and Mapping Co., Inc. on January 8, 1998.

Description prepared by:


Jeffrey J. Lee
Professional Surveyor 6359
January 28, 1998



L-2607

ORIGINAL STAMP IN GREEN

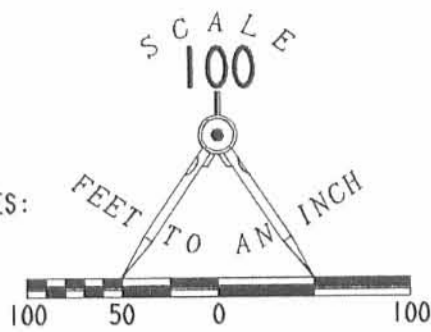
9172 3D

LEGEND

- 5/8" IRON ROD SET
- ⊙ MAG NAIL SET
- ⊙ CONCRETE R/W MONUMENT FOUND

REFERENCES

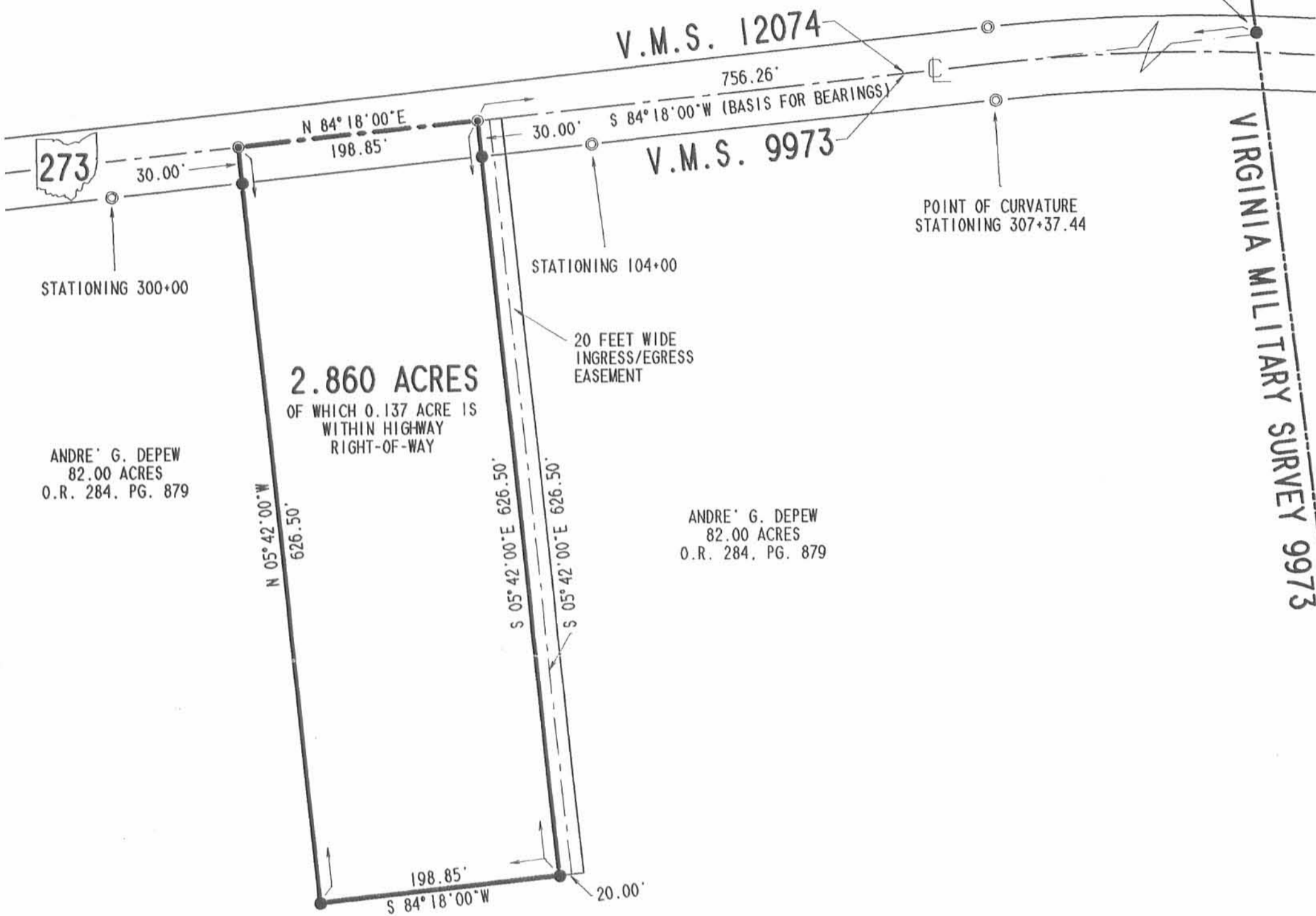
LOGAN COUNTY ENGINEER'S FILES:
 ODOT MAP FOR S.R. 273
 R 991
 R 1373



POINT OF INTERSECTION
 STATIONING 310+64.60

V.M.S. 9974
 V.M.S. 12074

VIRGINIA MILITARY SURVEY 9973



ANDRE' G. DEPEW
 82.00 ACRES
 O.R. 284, PG. 879

ANDRE' G. DEPEW
 82.00 ACRES
 O.R. 284, PG. 879

**SURVEY OF 2.860 ACRES
 OUT OF THE
 ANDRE' G. DEPEW & KATHERINE S. DEPEW
 ORIGINAL 82.0 ACRE TRACT
 OFFICIAL RECORD 284, PAGE 879
 VIRGINIA MILITARY SURVEY 9973
 RICHLAND TOWNSHIP
 LOGAN COUNTY, OHIO**

SURVEYED BY:

Jeffrey I. Lee

JEFFREY I. LEE
 PROFESSIONAL SURVEYOR 6359
 JANUARY 8, 1998
 EASEMENT ADDED JANUARY 28, 1998



ORIGINAL STAMP IN GREEN

COPYRIGHT 1998 BY:
LEE SURVEYING & MAPPING CO., INC.
 117 North Madriver Street
 BELLEFONTAINE, OHIO 43311
 (937) 593-7335

2 WORKING DAYS
BEFORE YOU DIG
 CALL TOLL FREE **800-362-2764**
OHIO UTILITIES PROTECTION SERVICE.

9172 3P

D 321

ADEPEW

L2607-3