

2-5-13

# Lee Surveying and Mapping Co., Inc.

Land Surveys • Topography • Subdivisions • Construction Layout



117 N. Madriver St.  
Bellefontaine OH 43311



Phone: (937) 593-7335  
Fax: (937) 593-7444  
surveys@lsminc.us

## MILLER 1.105 ACRES

Lying in Virginia Military Surveys 9971 and 9950, Richland Township, Logan County, Ohio.

Being out of the Jay L. Miller and Julie A. Miller, Trustees 20.50 acre tract as deeded and described in Official Record 1046, Page 306, Parcel Six of the Logan County Records of Deeds and being more particularly described as follows:

Commencing on a railroad spike found on the intersection of the center-lines of County Highway 49 and County Highway 39.

THENCE, with the centerline of County Highway 39 (60 feet wide), S 41°-44'-35"W, a distance of 1025.00 feet to a MAG nail set at the TRUE POINT OF BEGINNING.

THENCE, S 48°-15'-25"E, a distance of 275.00 feet to a 5/8 inch iron rod set, passing a 5/8 inch iron rod set at 30.00 feet.

THENCE, S 41°-44'-35"W, a distance of 175.00 feet to a 5/8 inch iron rod set.

THENCE, N 48°-15'-25"W, a distance of 275.00 feet to a MAG nail set on the center-line of County Highway 39, passing a 5/8 inch iron rod set at 245.00 feet.

THENCE, with the center-line of County Highway 39, N 41°-44'-35"E, a distance of 175.00 feet to the point of beginning.

Containing 1.105 acres, of which 0.121 acre is within the highway right-of-way. There is 0.055 acre in Virginia Military Survey 9971 and 1.050 acres in Virginia Military Survey 9950.

Property is subject to any and all previous easements and rights-of-way of record.

The basis for bearings is the center-line of County Highway 39, being N 41°-44'-35"E, and all other bearings are from angles and distances measured in a field survey by Lee Surveying and Mapping Co., Inc. on January 29, 2013.

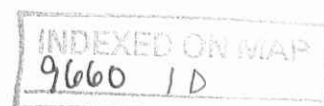


ORIGINAL STAMP IN GREEN

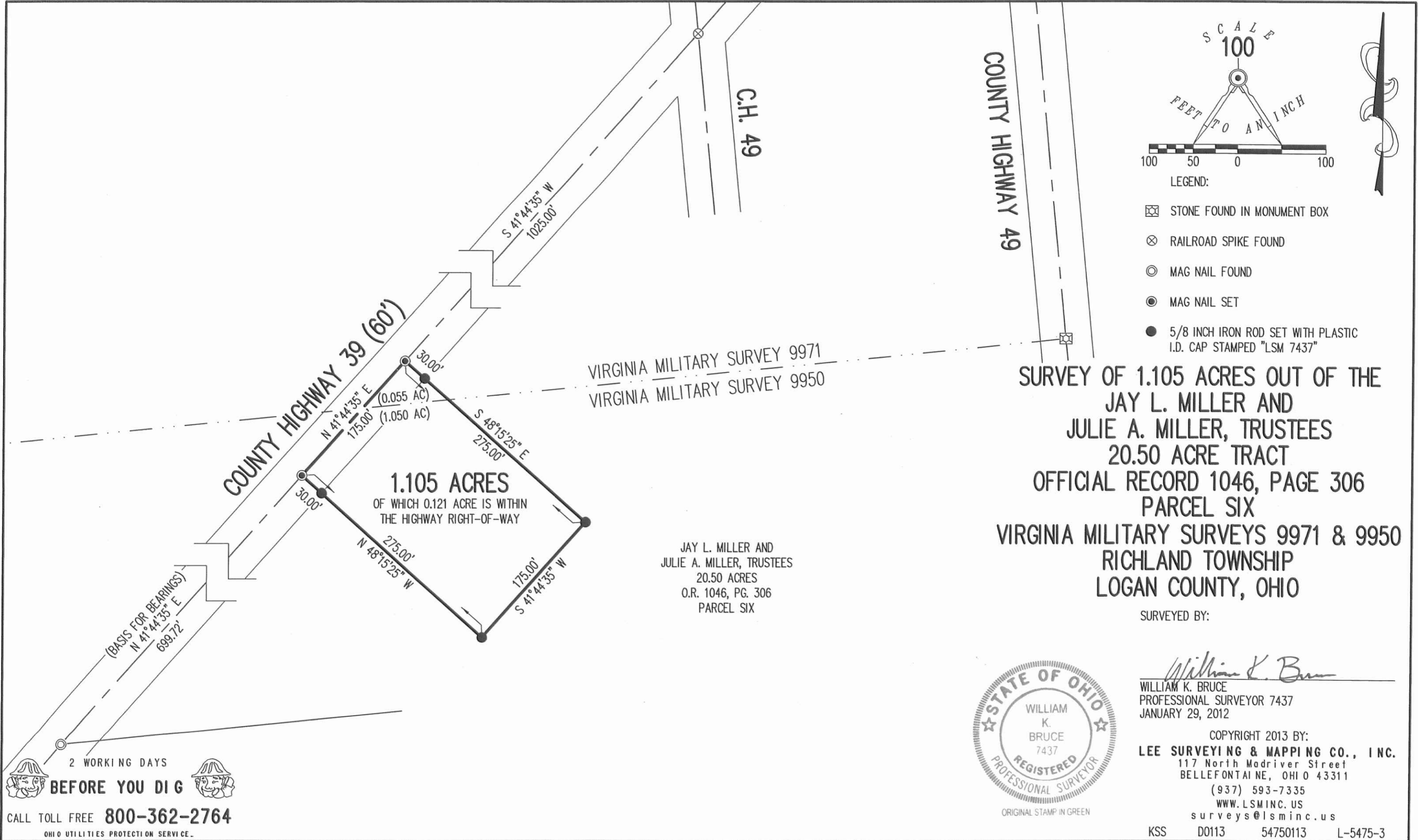
Description prepared by:

William K. Bruce  
Professional Surveyor 7437  
January 29, 2013

54750113



**APPROVED**  
2-5-13



**SURVEY OF 1.105 ACRES OUT OF THE  
JAY L. MILLER AND  
JULIE A. MILLER, TRUSTEES  
20.50 ACRE TRACT  
OFFICIAL RECORD 1046, PAGE 306  
PARCEL SIX  
VIRGINIA MILITARY SURVEYS 9971 & 9950  
RICHLAND TOWNSHIP  
LOGAN COUNTY, OHIO**

JAY L. MILLER AND  
JULIE A. MILLER, TRUSTEES  
20.50 ACRES  
O.R. 1046, PG. 306  
PARCEL SIX

SURVEYED BY:

*William K. Bruce*  
WILLIAM K. BRUCE  
PROFESSIONAL SURVEYOR 7437  
JANUARY 29, 2012



COPYRIGHT 2013 BY:  
**LEE SURVEYING & MAPPING CO., INC.**  
117 North Madriver Street  
BELLEFONTAINE, OHIO 43311  
(937) 593-7335  
WWW.LSMINC.US  
surveys@lsminc.us  
KSS D0113 54750113 L-5475-3

2 WORKING DAYS  
**BEFORE YOU DIG**  
CALL TOLL FREE **800-362-2764**  
OHIO UTILITIES PROTECTION SERVICE

INDEXED ON MAP  
9660 1P