

Plat of the Anasley lands by  
 McLaughlin May 1860

1003 IP

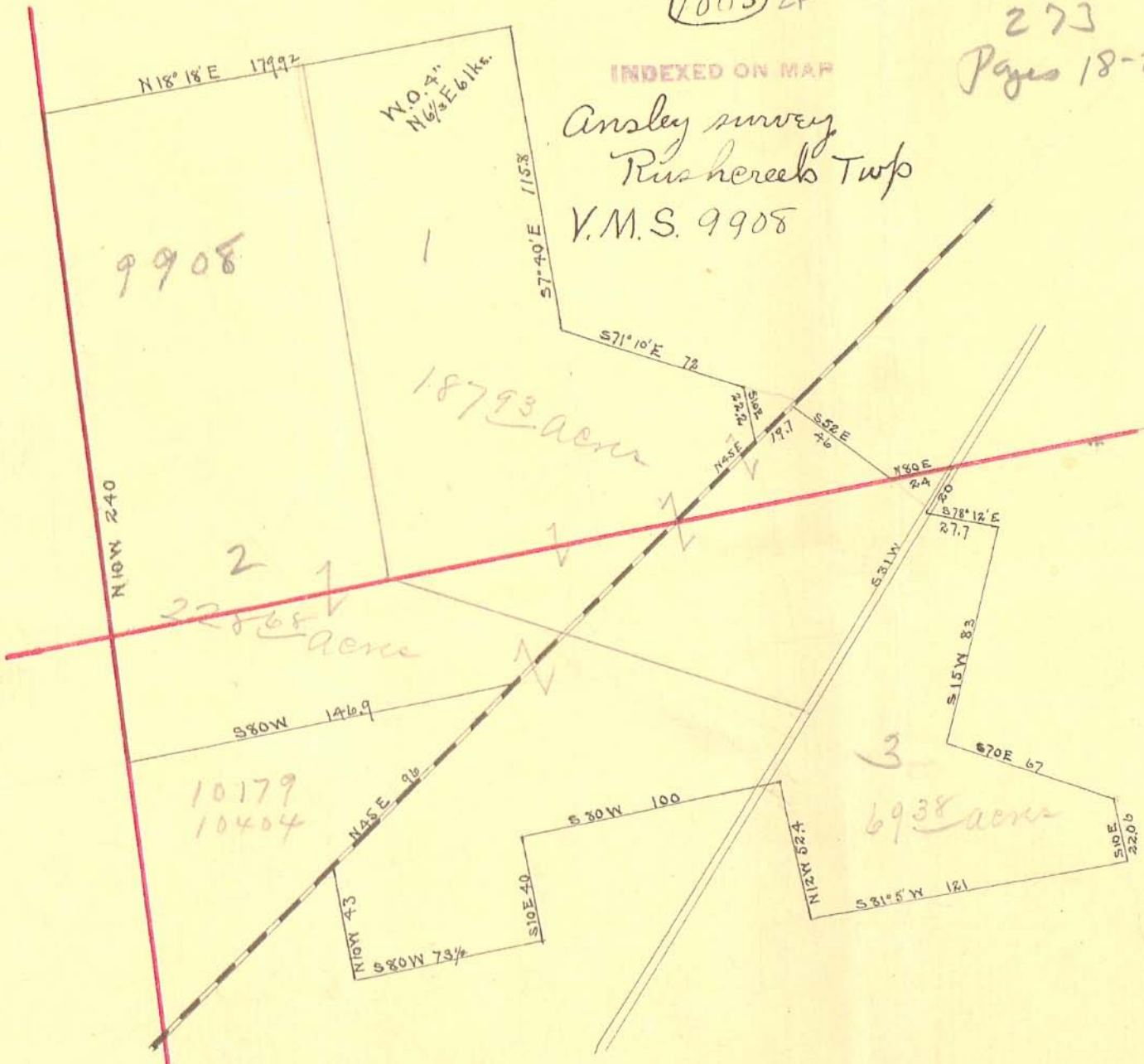
INDEXED ON MAP

1003 2P

See Book  
273  
Pages 18-23

INDEXED ON MAP

Ansley survey  
Rushcreek Twp  
V.M.S. 9908



Rushcreek Twp

CORE SURVEY  
V.M.S. 10179-10404 & 9908  
RUSHCREEK TOWNSHIP  
June, 1967

The following described real estate situated in Rushcreek Township, Logan County, Ohio and being part of Virginia Military Survey 10179-10404 and 9908 and more particularly described as follows:

Beginning at an iron pin in the center of County Highway No. 9 at the northwest corner of Edward K. Core's 185.00 acre tract, said pin being S.  $33^{\circ} 41'$  W. 13.1 feet from an iron pin at the intersection of the centerlines of said C.H. No. 9 and C. H. No. 118; thence with said Core's west line S.  $9^{\circ} 32'$  E. 3306.4 feet to an iron bar at the northeast corner of Neil R. Deisher's 108.00 acre tract, passing said Core's southwest corner at 3148.8 feet; thence with said Deisher's northline S.  $80^{\circ} 45'$  W. 2017.9 feet to an iron bar in the east line of James Ansley's 48.73 acre tract; thence with said Ansley's east line N.  $9^{\circ} 21'$  W. 878.0 feet to an iron bar at the northeast corner of said tract; thence with said Ansley's northline S.  $82^{\circ} 34'$  W. 231.0 feet to an iron bar in the center of said County Highway No. 9; thence with said centerline N.  $34^{\circ} 00'$  E. 425.6 feet to an iron bar; thence with centerline N.  $32^{\circ} 00'$  E. 1674.2 feet to an iron bar; thence with said centerline N.  $36^{\circ} 33'$  E. 630.8 feet to an iron bar; thence with said centerline N.  $33^{\circ} 41'$  E. 564.4 feet to the place of beginning.

INDEXED ON MAP

1003 3D-1

Core Survey (continued)

June, 1967

Containing 104.29 acres more or less. The above described tract being 100.12 acres out of the Vance Brand Co. 233.40 acre tract and all of the Vance Brand Co. 4.17 acre tract.

INDEXED ON MAP  
1003 3D-2

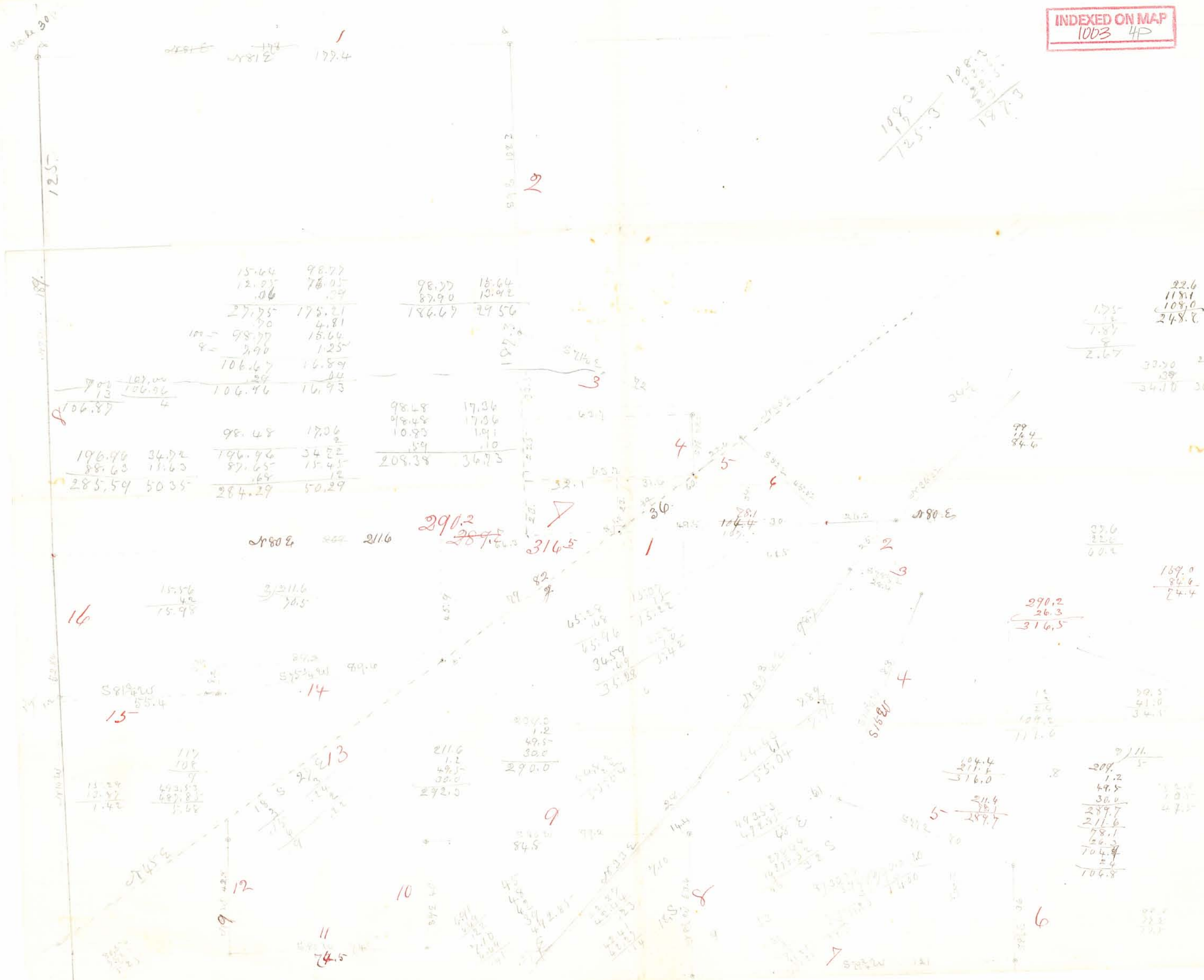
INDEXED ON MAP  
1003 4D

143499.221  
67880.585  
2775618.636  
4137809318  
49435233  
As 236.31 south  
" 238.19 north  
" 474.50 whole

Situate in Logan County Ohio part of Original Survey No 9908 and bounded as follows: Beginning at the South West corner of said survey: Thence with the west line thereof N 92 W 189 <sup>2</sup>/<sub>10</sub> poles to a post corner to Jonathan S. Anslays land: Thence with the lines of said Jonathan S. Anslays land N 81 E 177 <sup>4</sup>/<sub>100</sub> poles: S 9 E 108 <sup>2</sup>/<sub>10</sub> poles: S 71 <sup>1</sup>/<sub>2</sub> E 72 poles: S 9 E 22 <sup>5</sup>/<sub>10</sub> poles to a post in the centre of the C.C.C. & D.R.R. Thence with said rail road N 45 E 22 <sup>6</sup>/<sub>10</sub> poles: Thence S 52 E 45 <sup>5</sup>/<sub>10</sub> poles to a post in the south line of said survey. Thence with said south line N 80 E 26 <sup>5</sup>/<sub>10</sub> poles to a post in the centre of the Bellefontaine & Rushsylvania Pike

Thence with said last mentioned line S 00 W 290 <sup>3</sup>/<sub>10</sub> poles to the place of beginning containing Two Hundred and Thirty Eight <sup>190</sup>/<sub>100</sub> acres:

And also part of Original Survey Nos 10404 & 10179 bounded as follows: Beginning at the North West corner of said <sup>last mentioned</sup> survey: Thence with the north line thereof N 80 E 316 <sup>5</sup>/<sub>10</sub> poles, <sup>crossing said rail road at 211 <sup>4</sup>/<sub>10</sub> poles</sup> to a post in the centre of the Bellefontaine and Rushsylvania Pike: Thence with said pike S 36 <sup>1</sup>/<sub>2</sub> W 25 poles: Thence with the lines of said Jonathan S. Anslays land S 78 <sup>1</sup>/<sub>2</sub> E 28 <sup>4</sup>/<sub>10</sub> poles: S 15 W 83 <sup>1</sup>/<sub>10</sub> poles: S 77 E 67 <sup>7</sup>/<sub>10</sub> poles crossing a creek several times: S 82 <sup>3</sup>/<sub>4</sub> E 35 <sup>7</sup>/<sub>10</sub> poles to a post in the north line of Musselmanns land Thence with his line S 79 <sup>3</sup>/<sub>4</sub> W 12 <sup>1</sup>/<sub>10</sub> poles to a post in the line of James Anslays land Thence with the lines of his land N 10 W 53 <sup>4</sup>/<sub>10</sub> poles: S 80 W 99 poles crossing said pike at 14 <sup>4</sup>/<sub>10</sub> poles: S 9 E 40 poles: S 80 W 74 <sup>4</sup>/<sub>10</sub> poles to a post in the line of J. H. Dickinsons land. Thence with the line of his land N 94 <sup>1</sup>/<sub>2</sub> W 43 poles to a post in the centre of said rail road Thence with said rail road N 45 E 108 poles: Thence with the lines of said Dickinsons land S 75 <sup>1</sup>/<sub>4</sub> W 89 <sup>4</sup>/<sub>10</sub> poles and S 81 <sup>3</sup>/<sub>4</sub> W 55 <sup>6</sup>/<sub>10</sub> poles to a post in the west line of said last mentioned survey: Thence with the same N 10 W 52 <sup>8</sup>/<sub>10</sub> poles to the place of beginning containing Two Hundred and Thirty Six <sup>31</sup>/<sub>100</sub> acres.



2181.2  
179.4

108.0  
125.3  
187.3

125

128.2

2

|             |        |
|-------------|--------|
| 15.64       | 98.77  |
| 12.95       | 76.05  |
| .06         | .09    |
| 27.75       | 175.21 |
| .70         | 4.81   |
| 100 - 98.77 | 15.64  |
| 8 - 2.90    | 1.25   |
| 106.67      | 16.89  |
|             | .44    |
| 106.87      | 16.93  |

|        |       |
|--------|-------|
| 98.77  | 15.64 |
| 87.90  | 13.92 |
| 186.67 | 29.56 |

|       |
|-------|
| 22.6  |
| 118.1 |
| 108.0 |
| 248.8 |

|        |        |
|--------|--------|
| 7.01   | 107.00 |
| 13     | 106.96 |
| 106.87 | 4      |

|        |       |
|--------|-------|
| 98.48  | 17.06 |
| 196.96 | 34.22 |
| 87.65  | 15.45 |
| 284.29 | 50.29 |

|        |       |
|--------|-------|
| 98.48  | 17.36 |
| 198.48 | 17.36 |
| 10.83  | 1.91  |
| .54    | .10   |
| 209.38 | 36.73 |

99  
16.4  
84.6

N 80 E 211.6

291.2  
289.5  
314.5

16

|       |
|-------|
| 15.56 |
| 4.2   |
| 15.98 |

|       |
|-------|
| 311.6 |
| 34.5  |

|       |
|-------|
| 291.2 |
| 26.3  |
| 316.5 |

S 81 E 25.4  
15

|        |
|--------|
| 117    |
| 108    |
| 9      |
| 493.83 |
| 487.81 |
| 5.68   |

|       |
|-------|
| 211.6 |
| 1.2   |
| 49.5  |
| 30.0  |
| 292.5 |

|       |
|-------|
| 234.0 |
| 1.2   |
| 49.5  |
| 30.0  |
| 290.0 |

|       |
|-------|
| 211.6 |
| 5     |
| 209   |
| 1.2   |
| 49.5  |
| 30.0  |
| 289.7 |
| 211.6 |
| 78.1  |
| 26.3  |
| 104.8 |
| 4     |
| 104.8 |

N 74 E 12

19

10

11  
14.5

9

8

5

6

7

Eros Ausley Survey

Rushcreek Top.  
V.M.S. 9908

Line A. Start in fence north  
lane 576 E ~~7.14~~ to stone  
 $7.14 - 6 = 7.08$   
Set iron bar in pit

Line B -  
East of road 517 N  
20.86 to stone

Line C. <sup>7.13/4</sup>  
~~576 1/4 E~~  
16.78 to stone

Line D -  
512 1/4 E 9.04

Feb. 14 - 1899 -

Line E -  
583 1/4 N  
30.40

Line F -  
~~111 1/4 N~~ 111 1/4 N  
13.19  
to point 8' from end of log,  
retaining wall. ~~111 1/4~~ bridge  
and 5 1/2' from end of log.  
retaining wall ~~51 1/4~~ bridge  
Eros Ausley to set iron bar

583 1/4 N  
3.50 to iron bar  
in pit

1003

INDEXED ON MAP

Line H.

with fence

N 24 3/4 E

8.35

to iron spike

21 Ch distance from 1st bridge floor

25 1/2 " " " " " "

Line J.

with fence

N 32 1/4 E

24.35

to begin of line A.

~~Line K from end line J.~~

~~with fence N 38 1/2 E .500~~

~~set iron spike~~

Line M-

S 78 N

Line H'

S. 82 3/4 N

South side of farm west of fence

21.23 to fence

Post at <

set south 8' came out 4' south

total northing 4'

OS. Cor. S 8 1/2 N



Line J  
Set east 8'  
S 7 1/4 E  
Came out 9 1/2 east  
10.07

Line K  
Set south 8'  
S 82 3/4 W  
1849  
Came out 11' south

Line M  
x. N 50 W  
10.51  
to center Ry

Line A  
with Ry.  
N 47 1/2 E

at 28<sup>00</sup> fms from west

George Fleming } ch or  
Roy Ausley }  
Enos Ausley }  
2 days each  
Board Enos Ausley 500

Feb 16 - 1899

Line K'

with spike from end of  
line A. to iron spike  
set in survey line -  
N 38° E 5.89 1/2

Line M' - with survey line  
S 81° W 6.65 to iron bar  
in line of fence

Line H' with picket & wire  
fence  
N 51° W 11.32 to center Ry

(1003)

INDEXED ON MAP

Line "O" with Ry -  
S 42° E 547 ft

551 1/2 set spike center of track

Line "P"

N 5 1/4° E 5.92 to fence  
set iron bar

Line "R"

with fence N 69 1/2° E  
18.01 to corner of fence (post)

Line S. with fence

N 5° E 28.75 to stone W.P. with  
set west 16'  
corner out 11 1/2' west total casting 4 1/2'  
O.K. see N 6° E

Line "T"

North line of farm  
set south 45' from stone  
S 82 1/4 W

Set iron bar at 20<sup>00</sup>  
45 1/2' north of line at line of  
wire fence. O.K. Course & line S 82 1/2 W

44.84 to fence corner (rail  
fence). NW 2 farm

came out 84 1/2' south of corner  
of fence - total southing  
of 136 1/2'

O.K. Course from 20<sup>00</sup> to end  
West part of line. S 83 1/2 W

1003

INDEXED ON MAP

22

Line "U"

west line of farm  
set east 16'

S 7 E

set east 24'

came out 18' east

total westing 22'

62.24

O.K. Course S 7 1/4 E

Line "V"

N. line Isaiah Dickson.

N 81 1/4 E

set north 16'

136.2

came out 39' north

total north 23'

O.K. Course N 83 1/4 E

Line "N"  
North line "Bill" Atkinson  
N 77 1/2° E  
22.30

26.97 from end of line N  
with center of Ry to end of  
line M.

1003

INDEXED ON MAP

On North line from  
spike set 2000 from NE  
N 63 1/4° E 6 1/2" lts  
S 6° E  
48.16

to iron bar in survey line  
N 67° E 4" 567 E 6 lts

Line "A"  
from bar as above to end  
of line H in fence  
S 65° E  
at 17.68 center Ry at 2000  
from end of line N  
at 41.51 end of line H in  
fence

