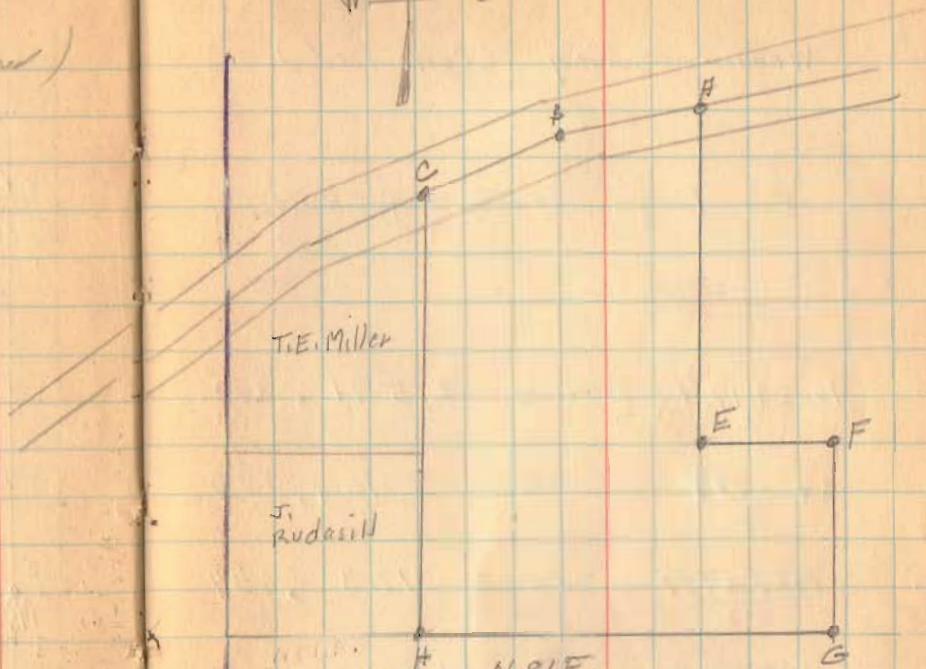
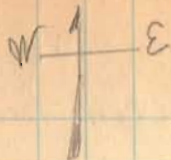


8-27-34

48

Webber survey (continued)



$$\begin{array}{r} 3181 \\ 1781 \\ \hline 1400 \end{array}$$

V.M.S. 3323

1749.
N. 81° E.

Distance
from Ball
Dred
Vol. 139
Page 217

N. 81° E.
3181

V.M.S. 3314

S.H. 736
state route 47

V.M.S. 3326

Road 126

V.M.S. 3325

1603

INDEXED ON MAP

REID 12-6-06 EMM OLC

Lee Surveying and Mapping Co., Inc.

Land Surveys • Topography • Subdivisions • Construction Layout

117 N. Madriver St.
Bellefontaine OH 43311



Phone: (937) 593-7335
Fax: (937) 593-7444

1975-2005 - 30 YEARS OF EXCELLENCE

**BLACKHOOF, LLC
34.068 ACRES**

Lying in Virginia Military Survey 3314, Rushcreek Township, Logan County, Ohio.

Being all of the Blackhoof, LLC 34.07 acre tract as deeded and described in Official Record 854, Page 146, Tract I of the Logan County Records of Deeds and being more particularly described as follows:

Beginning on a MAG nail found at the southwest corner of Virginia Military Survey 3314, on the intersection of center-lines of Ohio Route 47 and Township Road 26.

THENCE, with the west line of Virginia Military Survey 3314 and the east lines of the Laurel G. Hill 44.63 acre tract (O.R. 178, Pg. 347) and the Board of Education of Benjamin Logan Local School District 160.30 acre tract (O.R. 66, Pg. 140), N 3°-21'-17"W, a distance of 1736.83 feet to a 5/8 inch iron rod set, passing a 5/8 inch iron rod found at 45.00 feet.

THENCE, with the south line of the Blackhoof, LLC 51.76 acre tract (O.R. 854, Pg. 146, Tract II), N 85°-15'-32"E, a distance of 846.61 feet to a 5/8 inch iron rod found.

THENCE, with the west lines of the Blackhoof, LLC 133.95 acre tract (O.R. 854, Pg. 144, Tract I), the following two courses:

S 9°-13'-19"E, a distance of 925.73 feet to a 5/8 inch iron rod found.

S 23°-42'-48"W, a distance of 358.28 feet to a 5/8 inch iron rod found.

THENCE, with the west lines of the said 133.95 acre tract and the Blackhoof, LLC 6.941 acre tract (O.R. 854, Pg. 139, Tract No. 1, Parcel No. 1), S 2°-19'-43"E, a distance of 505.46 feet to a MAG nail found on the south line of Virginia Military Survey 3314 and the center-line of Ohio Route 47, passing a 5/8 inch iron rod found at 460.44 feet.

THENCE, with the south line of Virginia Military Survey 3314 and the center-line of Ohio Route 47 (90 feet wide), S 85°-45'-00"W, a distance of 769.00 feet to the point of beginning.

Containing 34.068 acres, of which 0.794 acre is within the highway right-of-way.

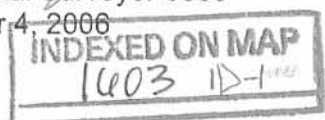
The basis for bearings is the south line of Virginia Military Survey 3314, being S 85°-45'-00"W, and all other bearings are from angles and distances measured in a field survey by Lee Surveying and Mapping Co., Inc. on December 1, 2006.



ORIGINAL STAMP IN GREEN

Description prepared by:

[Handwritten Signature]
Jeffrey I. Lee
Professional Surveyor 6359
December 4, 2006



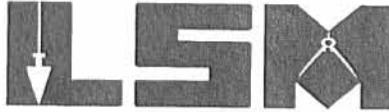
3882116

REC'D 12-16-06 SAM

Lee Surveying and Mapping Co., Inc.

Land Surveys • Topography • Subdivisions • Construction Layout

117 N. Madriver St.
Bellefontaine OH 43311



Phone: (937) 593-7335

Fax: (937) 593-7444

1975-2005 - 30 YEARS OF EXCELLENCE

BLACKHOOF, LLC

94.669 ACRES

Lying in Virginia Military Survey 3314, Rushcreek Township, Logan County, Ohio.

Being all of the Blackhoof, LLC 51.76 acre tract and 43.54 acre tract as deeded and described in Official Record 854, Page 146, Tract II and Tract III of the Logan County Records of Deeds and being more particularly described as follows:

Commencing on a MAG nail found at the southwest corner of Virginia Military Survey 3314, on the intersection of center-lines of Ohio Route 47 and Township Road 26.

THENCE, with the west line of Virginia Military Survey 3314 and the east lines of the Laurel G. Hill 44.63 acre tract (O.R. 178, Pg. 347) and the Board of Education of Benjamin Logan Local School District 160.30 acre tract (O.R. 66, Pg. 140), N 3°-21'-17"W, a distance of 1736.83 feet to a 5/8 inch iron rod set at the TRUE POINT OF BEGINNING, passing a 5/8 inch iron rod found at 45.00 feet.

THENCE, with the west line of Virginia Military Survey 3314 and the east lines of the said 160.30 acre tract, the Steven J. Johnston 1.50 acre tract (Vol. 392, Pg. 300), the Steven J. Johnston 0.994 acre tract (O.R. 195, Pg. 745), the George William Adelsberger 3.972 acre tract (O.R. 191, Pg. 721) and the Steven L. Stout 16.24 acre tract (O.R. 105, Pg. 378), N 3°-00'-45"W, a distance of 1555.47 feet to a 5/8 inch iron rod set.

THENCE, with the west line of Virginia Military Survey 3314 and the east lines of the said 16.24 acre tract and the Steven Stout 4.50 acre tract (Vol. 407, Pg. 996), N 2°-46'-48"W, a distance of 987.85 feet to a 1/2 inch iron pipe found on the center-line of County Highway 26 at center-line Station 64+06.33 (Logan County Engineer's Plan X-26), passing a 5/8 inch iron rod set at 912.61 feet.

THENCE, with the center-line of County Highway 26 (60 feet wide), the following three courses:

N 30°-10'-59"E, a distance of 100.00 feet to a "6 penny" nail found.

N 41°-35'-04"E, a distance of 99.02 feet to a railroad spike set.

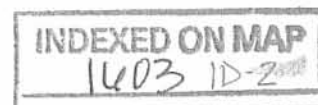
N 56°-25'-57"E, a distance of 910.39 feet to a MAG nail set.

THENCE, with the lines of the James A. Warren 8.13 acre tract (O.R. 470, Pg. 974), the following three courses:

S 29°-56'-37"E, a distance of 397.07 feet to a 1 inch iron pipe found, passing a 5/8 inch iron rod set at 30.06 feet.

S 45°-35'-52"E, a distance of 283.25 feet to a 5/8 inch iron rod set.

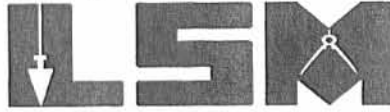
N 84°-21'-01"E, a distance of 215.77 feet to a 5/8 inch iron rod set.



Lee Surveying and Mapping Co., Inc.

Land Surveys • Topography • Subdivisions • Construction Layout

117 N. Madriver St.
Bellefontaine OH 43311



Phone: (937) 593-7335
Fax: (937) 593-7444

1975-2005 - 30 YEARS OF EXCELLENCE

THENCE, with the west line of the Blackhoof, LLC 103.82 acre tract (O.R. 854, Pg. 139, Tract No. II), the following two courses:

S 1°-13'-53"E, a distance of 1046.65 feet to a stone found, referenced by a 5/8 inch iron rod set
S 86°-45'-00"W, a distance of 0.36 feet.

S 1°-53'-55"E, a distance of 1518.46 feet to a 5/8 inch iron rod set.

THENCE, with the north lines of the Blackhoof, LLC 133.95 acre tract (O.R. 854, Pg. 144, Tract I) and the Blackhoof, LLC 34.07 acre tract (O.R. 854, Pg. 146, Tract I), S 85°-15'-32"W, a distance of 1437.92 feet to the point of beginning, passing a 5/8 inch iron rod found at 591.31 feet.

Containing 94.669 acres, of which 0.780 acre is within the highway right-of-way.

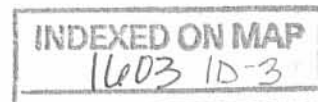
The basis for bearings is the south line of Virginia Military Survey 3314, being S 85°-45'-00"W, and all other bearings are from angles and distances measured in a field survey by Lee Surveying and Mapping Co., Inc. on December 1, 2006.



Description prepared by:

Jeffrey I. Lee
Professional Surveyor 6359
December 4, 2006

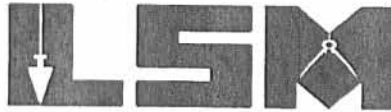
3882116



DEED 12-6-06 S.W.M. OK
Lee Surveying and Mapping Co., Inc.

Land Surveys • Topography • Subdivisions • Construction Layout

117 N. Madriver St.
Bellefontaine OH 43311



Phone: (937) 593-7335
Fax: (937) 593-7444

1975-2005 - 30 YEARS OF EXCELLENCE

**BLACKHOOF, LLC
65.943 ACRES**

Lying in Virginia Military Survey 3314, Rushcreek Township, Logan County, Ohio.

Being all of the Blackhoof, LLC 69.03 acre tract as deeded and described in Official Record 854, Page 139, Tract No. III of the Logan County Records of Deeds and being more particularly described as follows:

Commencing on a 1/2 inch iron pipe found on the west line of Virginia Military Survey 3314, on the center-line of County Highway 26 at center-line Station 64+06.33 (Logan County Engineer's Plan X-26, Page 3 of 5, Dated February, 1988).

THENCE, with the center-line of County Highway 26 (60 feet wide), the following four courses:

N 30°-10'-59"E, a distance of 100.00 feet to a "6 penny" nail found.

N 41°-35'-04"E, a distance of 99.02 feet to a railroad spike set.

N 56°-25'-57"E, a distance of 2305.30 feet to a 5/8 inch iron rod found in a monument box at Station 89+10.48.

N 66°-24'-34"E, a distance of 234.01 feet to a MAG nail set at the TRUE POINT OF BEGINNING.

THENCE, with the center-line of County Highway 26 (variable widths),
N 66°-24'-34"E, a distance of 220.00 feet to a railroad spike found.

THENCE, with the lines of the Blackhoof, LLC 101.83 acre tract (O.R. 854, Pg. 144, Tract II), the following two courses:

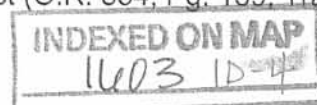
S 5°-09'-03"E, a distance of 1941.29 feet to a 8 inch wood post found, passing a 5/8 inch iron rod set at 26.35 feet.

N 77°-49'-59"E, a distance of 1824.74 feet to a 3/4 inch iron rod found, passing a 5/8 inch iron rod set at 2.20 feet.

THENCE, with the west lines of the William W. Stoltz 100.50 acre tract (Vol. 362, Pg. 412, Tract II) and the Amanda J. Prinkey 22.75 acre tract (Vol. 371, Pg. 1, Tract I), S 4°-51'-23"E, a distance of 1691.48 feet to a stone found.

THENCE, with a north line of the Blackhoof, LLC 133.95 acre tract (O.R. 854, Pg. 144, Tract I), S 85°-31'-38"W, a distance of 1287.52 feet to a stone found.

THENCE, with the lines of the Blackhoof, LLC 103.82 acre tract (O.R. 854, Pg. 139, Tract No. II), the following three courses:



Lee Surveying and Mapping Co., Inc.

Land Surveys • Topography • Subdivisions • Construction Layout

117 N. Madriver St.
Bellefontaine OH 43311



Phone: (937) 593-7335
Fax: (937) 593-7444

1975-2005 - 30 YEARS OF EXCELLENCE

N 6°-05'-21"W, a distance of 929.14 feet to a stone found.

S 84°-51'-00"W, a distance of 708.43 feet to a 5/8 inch iron rod set.

N 5°-09'-03"W, a distance of 2396.00 feet to the point of beginning, passing a 5/8 inch iron rod set at 2364.38 feet.

Containing 65.943 acres, of which 0.138 acre is within the highway right-of-way.

The basis for bearings is the south line of Virginia Military Survey 3314, being S 85°-45'-00"W, and all other bearings are from angles and distances measured in a field survey by Lee Surveying and Mapping Co., Inc. on December 1, 2006.



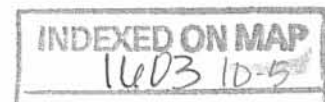
ORIGINAL STAMP IN GREEN

Description prepared by:

A handwritten signature in black ink, appearing to read 'J. Lee', written over the typed name and title.

Jeffrey I. Lee
Professional Surveyor 6359
December 4, 2006

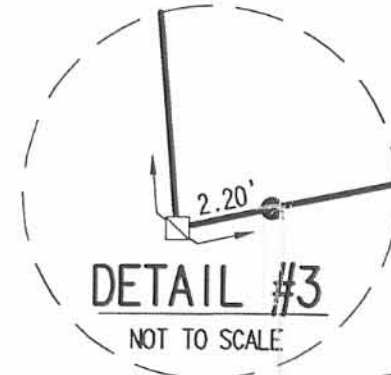
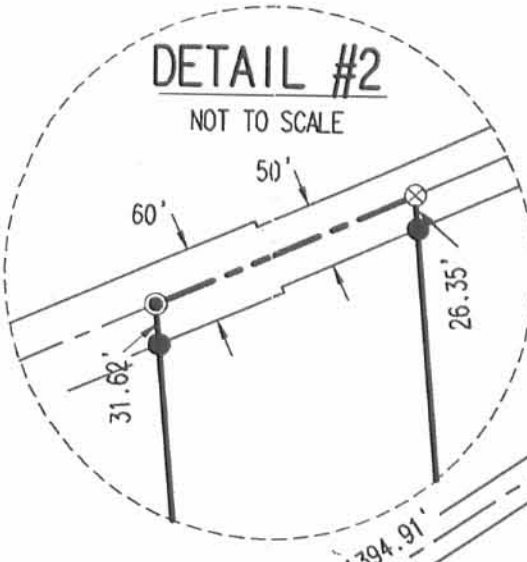
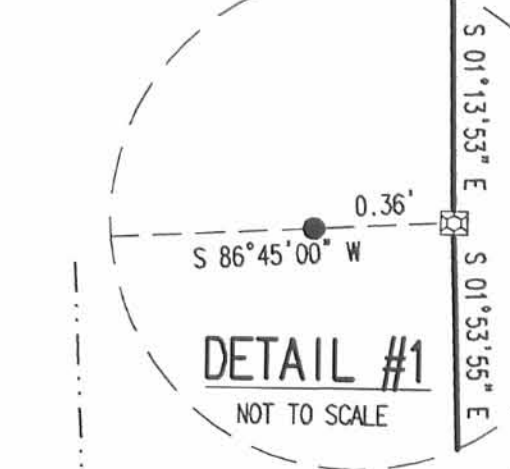
3882116



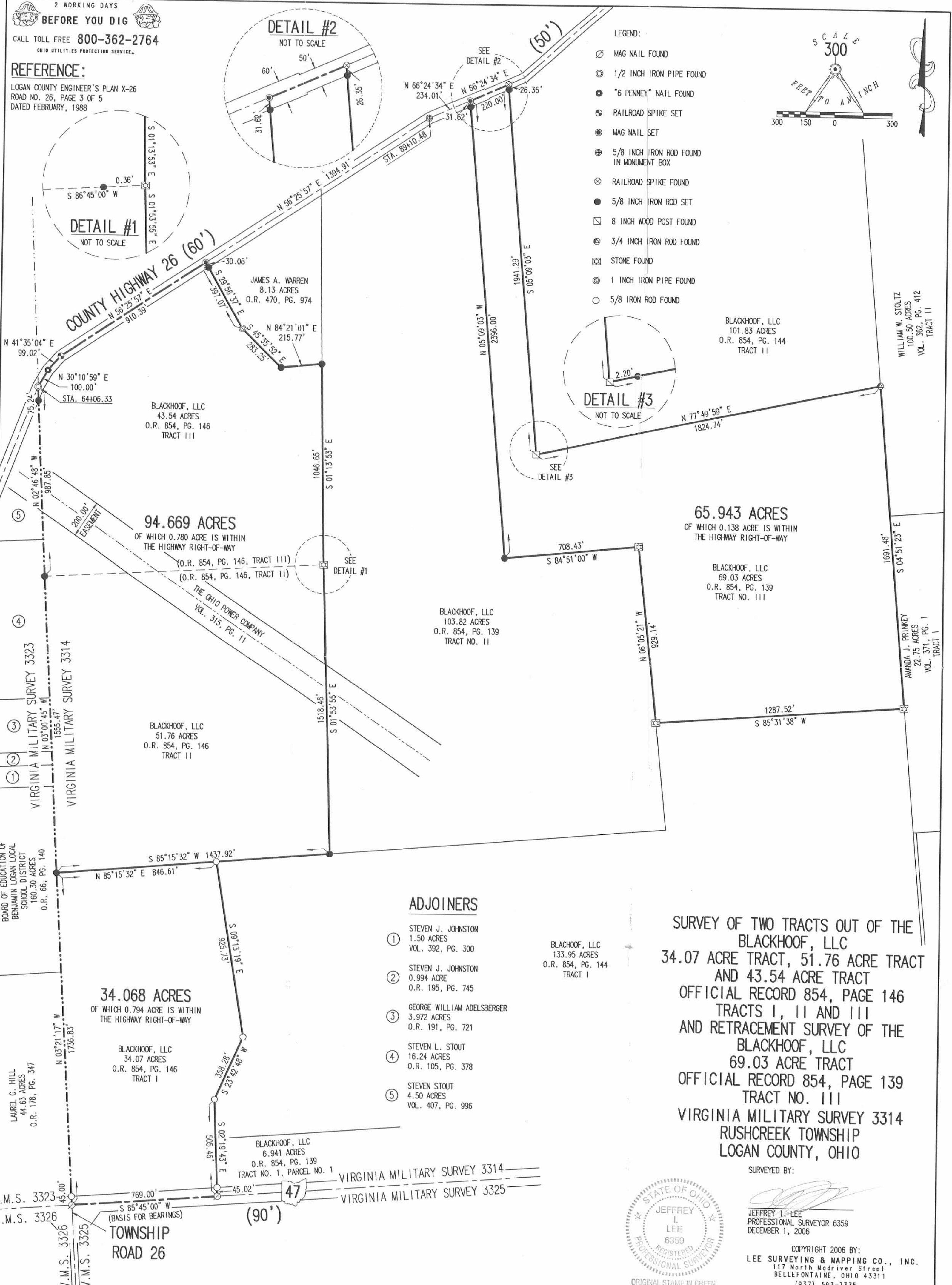
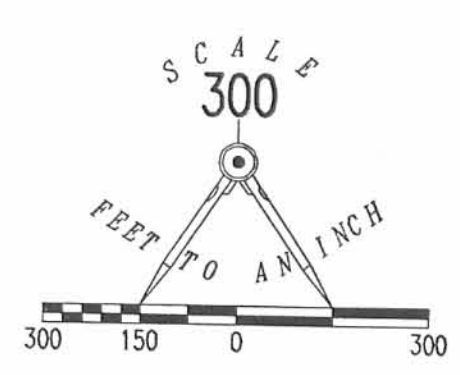
RECD 12-16-06 8M OK

2 WORKING DAYS
BEFORE YOU DIG
CALL TOLL FREE 800-362-2764
OHIO UTILITIES PROTECTION SERVICE.

REFERENCE:
LOGAN COUNTY ENGINEER'S PLAN X-26
ROAD NO. 26, PAGE 3 OF 5
DATED FEBRUARY, 1988



- LEGEND:**
- ⊗ MAG NAIL FOUND
 - ⊙ 1/2 INCH IRON PIPE FOUND
 - "6 PENNEY" NAIL FOUND
 - ⊕ RAILROAD SPIKE SET
 - ⊙ MAG NAIL SET
 - ⊕ 5/8 INCH IRON ROD FOUND IN MONUMENT BOX
 - ⊗ RAILROAD SPIKE FOUND
 - 5/8 INCH IRON ROD SET
 - ⊠ 8 INCH WOOD POST FOUND
 - ⊙ 3/4 INCH IRON ROD FOUND
 - ⊠ STONE FOUND
 - ⊙ 1 INCH IRON PIPE FOUND
 - 5/8 IRON ROD FOUND



BLACKHOOF, LLC
43.54 ACRES
O.R. 854, PG. 146
TRACT III

94.669 ACRES
OF WHICH 0.780 ACRE IS WITHIN
THE HIGHWAY RIGHT-OF-WAY

65.943 ACRES
OF WHICH 0.138 ACRE IS WITHIN
THE HIGHWAY RIGHT-OF-WAY

BLACKHOOF, LLC
69.03 ACRES
O.R. 854, PG. 139
TRACT NO. III

BLACKHOOF, LLC
103.82 ACRES
O.R. 854, PG. 139
TRACT NO. II

BLACKHOOF, LLC
51.76 ACRES
O.R. 854, PG. 146
TRACT II

34.068 ACRES
OF WHICH 0.794 ACRE IS WITHIN
THE HIGHWAY RIGHT-OF-WAY

BLACKHOOF, LLC
34.07 ACRES
O.R. 854, PG. 146
TRACT I

BLACKHOOF, LLC
6.941 ACRES
O.R. 854, PG. 139
TRACT NO. 1, PARCEL NO. 1

ADJOINERS

- ① STEVEN J. JOHNSTON
1.50 ACRES
VOL. 392, PG. 300
- ② STEVEN J. JOHNSTON
0.994 ACRE
O.R. 195, PG. 745
- ③ GEORGE WILLIAM ADELSBERGER
3.972 ACRES
O.R. 191, PG. 721
- ④ STEVEN L. STOUT
16.24 ACRES
O.R. 105, PG. 378
- ⑤ STEVEN STOUT
4.50 ACRES
VOL. 407, PG. 996

BLACKHOOF, LLC
133.95 ACRES
O.R. 854, PG. 144
TRACT I

**SURVEY OF TWO TRACTS OUT OF THE
BLACKHOOF, LLC
34.07 ACRE TRACT, 51.76 ACRE TRACT
AND 43.54 ACRE TRACT
OFFICIAL RECORD 854, PAGE 146
TRACTS I, II AND III
AND RETRACEMENT SURVEY OF THE
BLACKHOOF, LLC
69.03 ACRE TRACT
OFFICIAL RECORD 854, PAGE 139
TRACT NO. III
VIRGINIA MILITARY SURVEY 3314
RUSHCREEK TOWNSHIP
LOGAN COUNTY, OHIO**

SURVEYED BY:



JEFFREY I. LEE
PROFESSIONAL SURVEYOR 6359
DECEMBER 1, 2006

COPYRIGHT 2006 BY:
LEE SURVEYING & MAPPING CO., INC.
117 North Modriver Street
BELLEFONTAINE, OHIO 43311
(937) 593-7335

KSR D1206 3882116 L-3882-2

INDEXED ON MAP
1603 1P

Webber Survey.

The following described land in V.M.S. # 3314, Rushcreek Township, Logan County, Ohio.

Beginning at the Southwest corner of V.M.S. #3314; thence N. 8° 34' W. 1749 feet to the S.W. corner of John Rudasil's 51.67 acre tract; thence with said Rudasil's South line N.81° E. 1400 feet to a post, said post being the beginning point of this survey; thence N.3° 33' W. 3485 feet to a stake in the center of Logan County Road No. 26; thence with the center of said Road N. 54° 31' E. E. 662 feet to a stake; thence continuing with the center of said road N. 63° 12' E. 250 feet to a stake; thence with Sherman F. Lebold's West line S. 7° 14' E. 2396 feet to a stone; thence ~~S. 84° 16' E.~~ N. 84° 16' E. 718 feet to a stone; thence S.8° 03' E. 1504 feet to a hickory tree; thence S. 84° 27' W. 1781 feet to the place of beginning said tract containing 103.82 acres more or less and being the same tract as surveyed August 1934 as shown and recorded in Logan County Surveyor's Book 521 Pages 47 and 48.

INDEXED ON MAP

1603 2D-1

Webber Survey.

1934

The following described land in V.M.S. # 3314, Rushcreek Township, Logan County, Ohio.

Beginning at the Southwest corner of V.M.S. #3314; thence N. 8° 34' W. 1749 feet to the S.W. corner of John Rudasil's 51.67 acre tract; thence with said Rudasil's South line N.81° E. 1400 feet to a post, said post being the beginning point of this survey; thence N.3° 33' W. 3485 feet to a stake in the center of Logan County Road No. 26; thence with the center of said Road N. 54° 31' E. E. 662 feet to a stake; thence continuing with the center of said road N. 63° 12' E. 250 feet to a stake; thence with Sherman F. Lebold's West line S. 7° 14' E. 2396 feet to a stone; thence ~~S. 84° 16' E.~~ N. 84° 16' E. 718 feet to a stone; thence S. 8° 03' E. 1504 feet to a hickory tree; thence S. 84° 27' W. 1781 feet to the place of beginning said tract containing 103.82 acres more or less and being the same tract as surveyed August 1934 as shown and recorded in Logan County Surveyor's Book 521 Pages 47 and 48.

INDEXED ON MAP

(1603) 2D-2