

Harry L. Smith

SCHWIDT

The following described land situated in V.M.S. No. 10041, and V.M.S. No. 13446, Rushcreek Township, Logan County, Ohio.

Beginning at a stone in the survey line, and in the northeast corner of Nettie Stewart's 95.79 acre tract, thence with Stewarts north line S. $80^{\circ}-55'$ W. 3577.00 feet to the center of County highway No. 110 and the northwest corner of J. W. Peggs 85.82 acre tract; thence said county highway No. 110 and said Pegg's west line S. $29^{\circ}-06'$ W. 330.0 feet, S. $45^{\circ}-06'$ W. 891.0 feet, S. $31^{\circ}-51'$ W. 445.5 feet to the northeast corner of O. W. Snyder's 38.75 acre tract; thence with Snyder's north line N. $82^{\circ}-09'$ W. 1118.0 feet to a post in the southeast corner of F. G. Leidigh's 17.87 acre tract; thence with Leidigh's east line N. $18^{\circ}-48'$ E. 472.0 feet; thence N. $65^{\circ}-06'$ E. 318.0 feet to the northeast corner of Clara Musselman's 8.00 acre tract; thence with Musselman's north line N. $45^{\circ}-22'$ W. 708.0 feet to the center of S.H. No. 579 (State Route No. 274); thence with the center of S.H. No. 579 S. $41^{\circ}-51'$ W. 143.0 feet; thence S. $39^{\circ}-21'$ W. 410.0 feet to the north line of F. G. Leidigh's 17.87 acre tract; thence with Leidigh's north line N. $77^{\circ}-14'$ W. 1308.0 feet to a post in the east right-of-way line of the C.C.C. & St. L. Railway Company; thence with said right-of-way line the following courses and distances, N. $26^{\circ}-17'$ E. 122.6 feet, N. $29^{\circ}-12'$ E. 100.0 feet, N. $30^{\circ}-15'$ E. 100.0 feet, N. $30^{\circ}-48'$ E. 100.0 feet, N. $29^{\circ}-40'$ W. 12.0 feet, N. $21^{\circ}-30'$ E. 77.0 feet, N. $23^{\circ}-43'$ E. 100.0 feet, N. $26^{\circ}-07'$ E. 100.0 feet, N. $27^{\circ}-37'$ E. 100.0 feet, N. $29^{\circ}-32'$ E. 100.0 feet, N. $31^{\circ}-52'$ E. 100.0 feet, and

INDEXED ON MAP

1879 1D-1

N. 33°-57' E. 100.0 feet to a point on the line between V.M.S. 13446 and V.M.S. 10041; thence with the survey line and crossing C. C.C. & St. L. R.R. N. 7°-55' W. 2074.0 feet to a post in the south west corner of S.M. Jones 13.00 acre tract; thence with Jones south line N. 80°-33' E. 1437.0 feet to a post in the southeast corner of said Jones tract thence with Wm. Anderson's west line S. 8°-17' E. 936.0 feet to a post in Wm. Anderson's southwest corner; thence with Anderson's south line N. 80°-48' E. 1510.0 feet to the center of S.H. No. 579 (Route No. 274); thence continuing with said Andersons south line N. 83°-03' E. 468.0 feet to said Anderson's southeast corner and in county highway No. 110; thence with Anderson's east line and county highway NO. 110, N. 2°-17' W. 433.0 feet to a stone, in the southwest corner of J. L. Kennedy's 20.00 acre tract; thence with said Kennedy's south line N. 87°-17' E. 3291.0 feet to a point in county highway No.137 and in the east line of V.M.S. No. 10041; thence with said survey line S. 8°-05' E. 2437.4 feet to the place of beginning containing ~~463.09~~ acres; ~~458.24~~ acres being in V.M.S. No. 10041 and 4.85 acres being in V.M.S. No. 13446.

Except therefrom 6.13 acres which is property of the C.C.C. & St. L. R.R. Co. for right-of-way.

463.09
 6.13

 456.96

456.96
 6.13

 450.83

456.96
 6.13

 463.09

INDEXED ON MAP
 1879 D-2

Harry Lee Smith Final

The following described land situated in Rushcreek Township, Logan County, Ohio and being in Ohio Virginia Military Survey No. 10041.

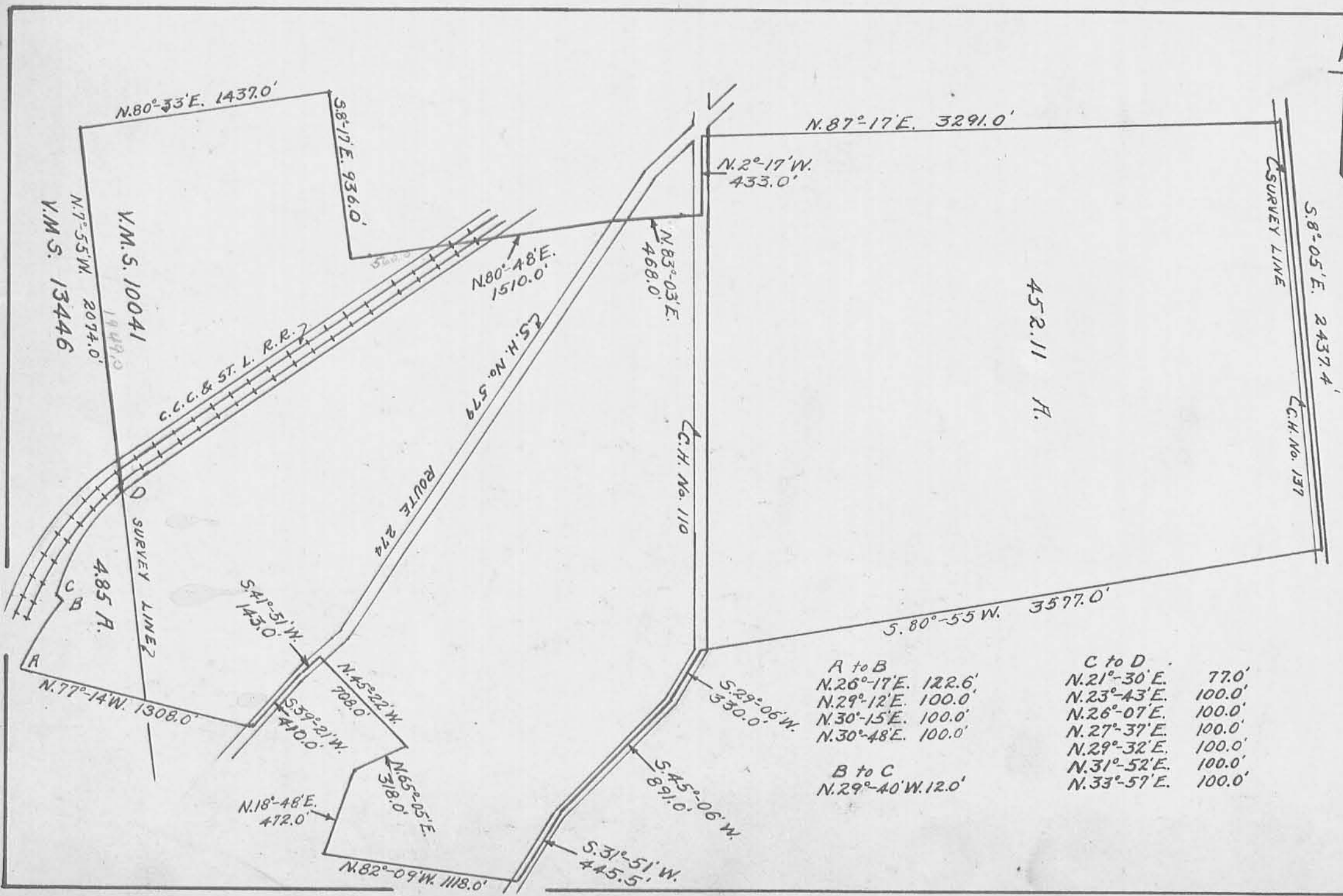
Beginning at a post in the southwest corner of a 13.00 acre tract belonging to Stanton M. Jones and in the line between V.M.S. 13446 and V.M.S. 10041; thence with Jones south line N. 80°-33' E. 1437.0 feet to a post in southeast corner of said 13.00 acre tract and the west line of Wm. Anderson's 62.30 acre tract; thence with the west line of said land S. 8°-17' E. 936.00 feet to a post; thence with the south line of said Anderson's land N. 80°-48' E. 560.0' to a post in the north right-of-way line of the C.C.C. & St. L. R.R. ; thence with said right-of-way line S. 55°-56' W. 959.5 feet; thence N. 34°-04' W. 10.0 feet; thence S. 55°-56' W. 300.0 feet; thence S. 34°-04' E. 25.0 feet; thence S. 55°-56' W. 401.80 feet to the P.C. of a 1°-58' curve to the left (whose radius is 2914.93 feet); thence with said curve to the left 608.5 feet to a post in the north line of said right-of-way and line between V.M.S. 13446 and V.M.S. 10041; thence with said survey line N. 7°-55' W. 1949.0 feet to the place of beginning containing 52.75 acres.

5-21-42

INDEXED ON MAP
1879 1D-3

SURVEY FOR HARRY LEE SMITH
V.M.S. 10041 & 13446
RUSHCREEK TOWNSHIP - LOGAN COUNTY, OHIO

Scale - 1" = 10 chains



A to B	
N.26°-17'E.	122.6'
N.29°-12'E.	100.0'
N.30°-15'E.	100.0'
N.30°-48'E.	100.0'

B to C	
N.29°-40'W.	12.0'

C to D	
N.21°-30'E.	77.0'
N.23°-43'E.	100.0'
N.26°-07'E.	100.0'
N.27°-37'E.	100.0'
N.29°-32'E.	100.0'
N.31°-52'E.	100.0'
N.33°-57'E.	100.0'

1877 IP
 INDEXED ON MAP