

FB 699

C. H. # 273
 Bushcreek Twp.

V. M. S. - 3323 - 3326 - 3327

Stakes set 25.0' Pt. & Lt. of E
 50' R/W

Total Length 0.68 mile

stone found

Hub Set 25' H & Lt G Sta. 20+00
 15+00
 10+00
 4+00
 0+50

Dodson
 Wilkus
 Detrick

Nov. 17, 18, 1952

Dec. 8, 1952

38

Angle - Sta. 20+45.8
 1/2 pipe set
 30' - 1.5' Pt.

1/2 pipe set
 No Angle
 Sta. 18+45.8



Hub Set
 No Angle
 Sta. 16+01.6

H.T. set
 No Angle
 Sta 15+00

R.E. spike set
 No Angle
 Sta. 11+72.0

Lewis Denhart
 11+72.0
 1559.8'
 H.O. Arbogast

H.O. Arbogast
 11+51.8
 G.M. & M.G. Parrett

No evidence of
 Survey Line

30" Conc. pipe
 Sta. 7+57

FB 699

H.O. Arbogast
 0+34.2
 F.C. Watkins

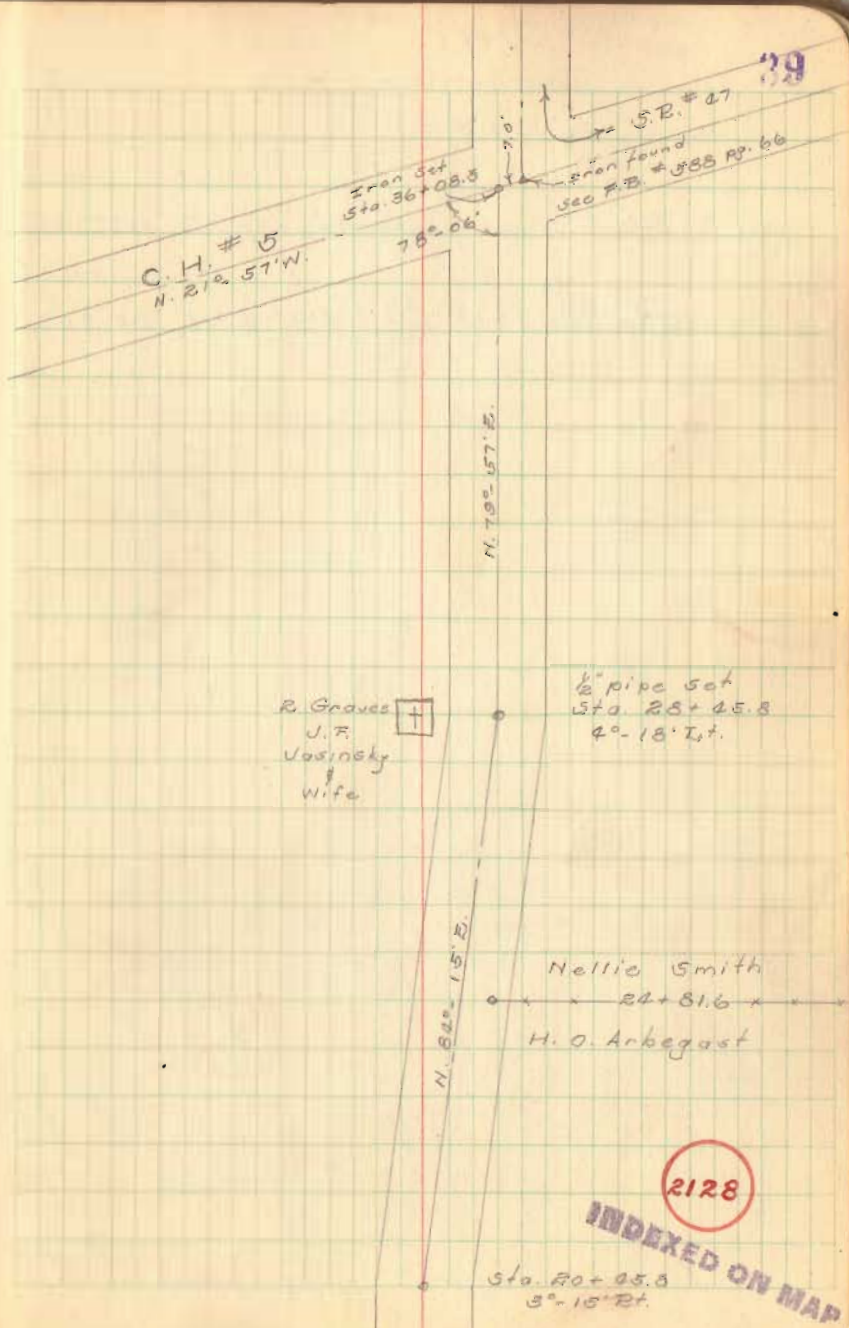
Hub Set
 Sta. 0+00

2128

INDEXED ON MAP

FB 699

C. H. # 273 Cont'd



FB 710

Resurvey Part of T.R. 273
Rushcreek Twp., Logan Co., Ohio

28+45.74 - P.I. - Fd. two R.R. Spikes
over a harrow tooth (≈ 10 " deep).
Set PK straddles and removed
harrow tooth in search of a pipe. -
No Luck. Reset harrow tooth
and reset one of the R.R. Spikes
over harrow tooth to surface.
Lt. def. $\angle = 4^{\circ}18'35''$

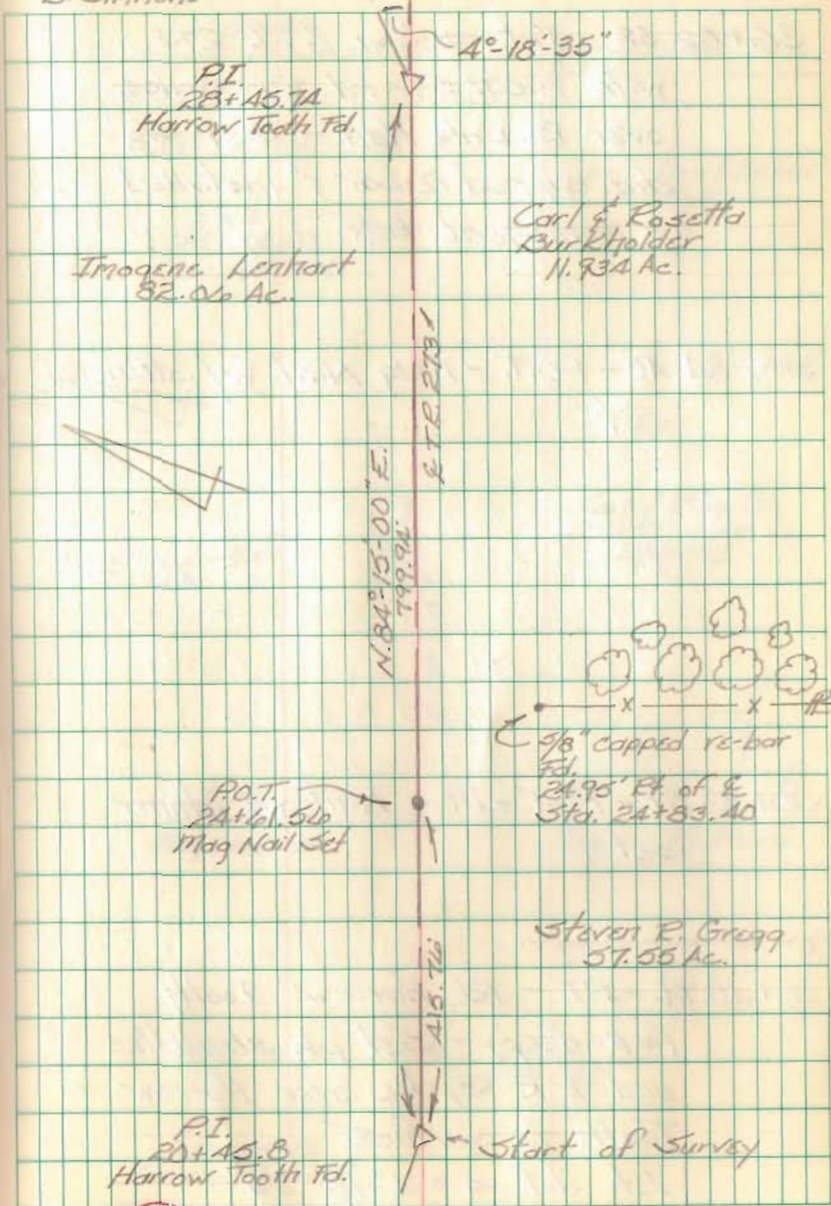
24+61.56 - P.O.T. - Mag Nail w/ shiner set

20+45.8 - P.I. - Fd. two R.R. Spikes
over a harrow tooth (≈ 10 " deep).
Set PK straddles and removed
harrow tooth in search of a
pipe. - No Luck. Reset
harrow tooth and reset one
of the R.R. Spikes over the
harrow tooth to surface.
Ref: F.B.K. 499; pgs. 38-39
F.B.K. 701; pg. 35
plan X-273

C. Nichols
C. Dill
B. Simmons

23-24 April 98

70



2128

FB 710

Resurvey Part of T.R. 273
Rushcreek Twp., Logan Co., Ohio

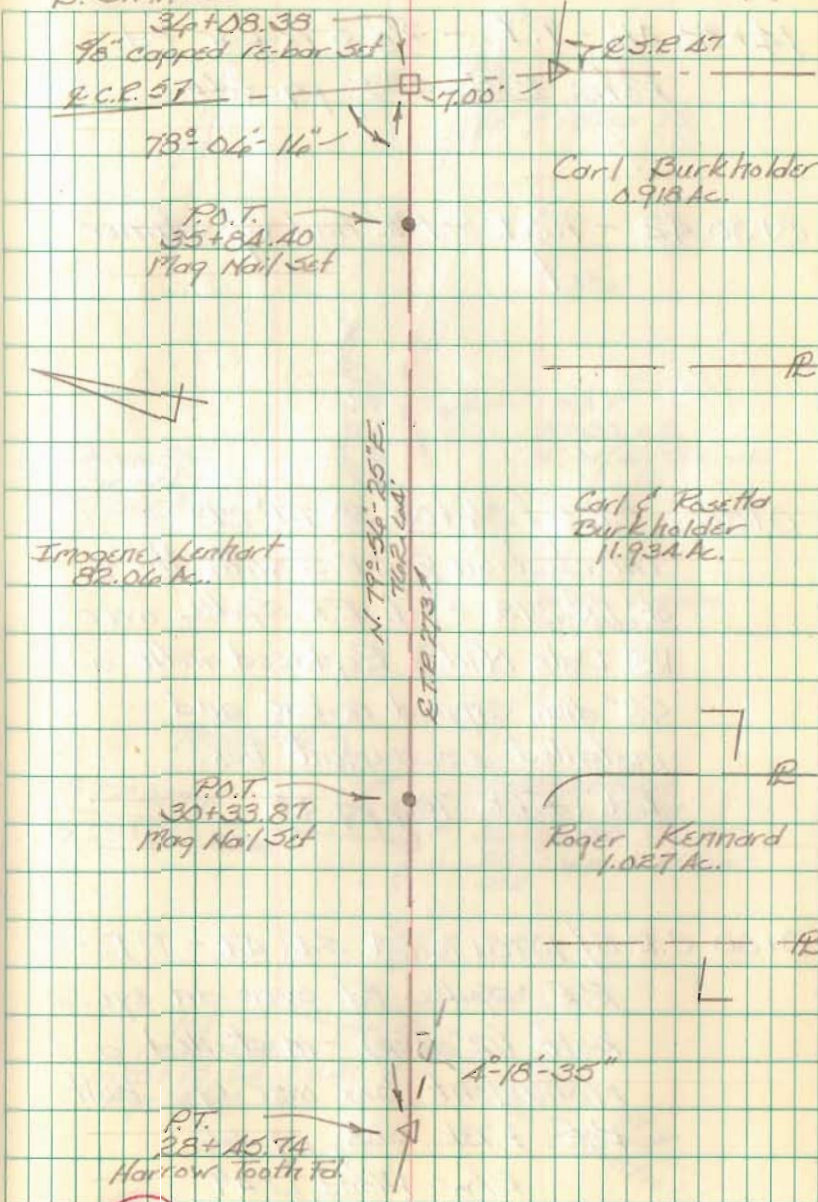
34+08.38 - Intersection of T.R. 273
with E.C.R. 5 - Fd. R.R. Spike
over Date Nail - Set $5/8$ "
dia. capped re-bar $5/8$ " installed
a monument box.

35+84.40 - P.O.T. - Mag Nail w/ stiner
set

30+33.87 - P.O.T. - Mag Nail w/ stiner
set

28+45.74 - P.I. - Fd. Harrow Tooth
(≈ 10 " deep) - Set pk straddles
and R.R. Spike over Harrow
Tooth to surface.
Lt. def. $\angle = 4^{\circ} 18' 35''$

C. Nichols 23-24 April 98
C. Dill
B. Simmons



2128

FB 710

Resurvey Part of T.R. 273
Rustercreek Twp, Logan Co., Ohio

14+32.46 - P.I. - $5/8"$ ϕ re-bar Fd.

Ref.: F.B.K. 588; pg. 66

8+30.42 - P.O.T. - PK nail w/ stiner
set

0+07.00 C.R. 5 / 36+08.38 T.R. 273 -
Intersection \square C.R. 5 with the \square
of T.R. 273. - Fd. R.R. Spike over
[28] Date Nail - Replaced with a
 $5/8"$ dia. capped re-bar and
installed a monument box.

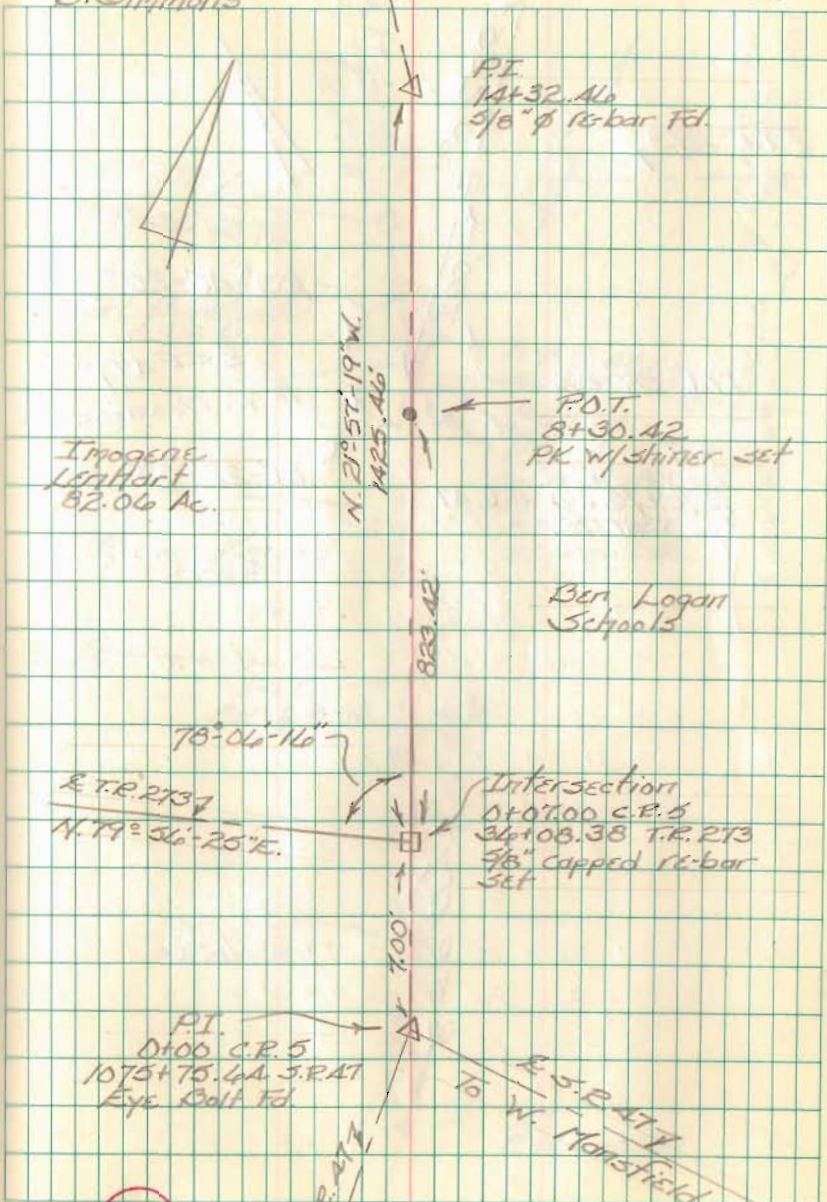
Ref.: F.B.K. 701; pg. 35

0+00 C.R. 5 / 1075+75.64 S.E. AT - P.I. -
R.R. Spike Fd. over an eye
bolt (12" deep) - installed a
monument box over eye bolt.
Ref.: F.B.K. 588; pg. 66
R/W Plans L-49

C. Nichols
C. Dill
B. Simmons

23-24 April 98

72

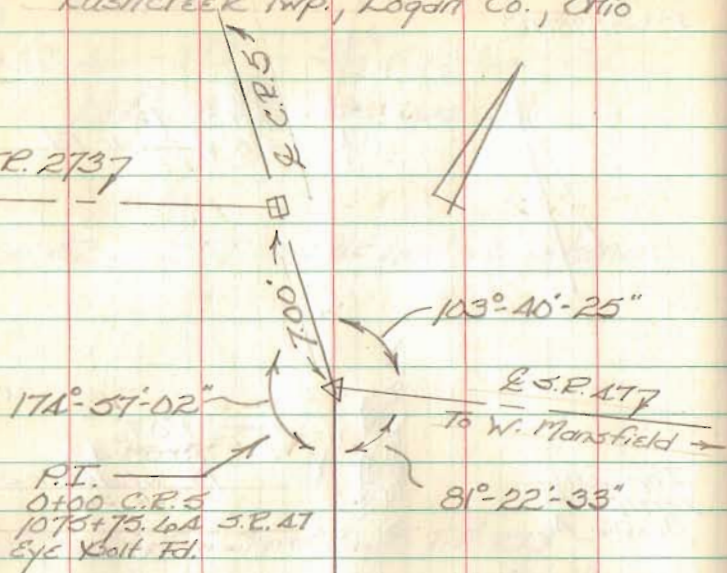


2128

FB 710

Resurvey Part of T.R. 273
Rushcreek Twp., Logan Co., Ohio

E.T.R. 2737



E.S.R. 177

C. Nichols
C. Dill
B. Simmons

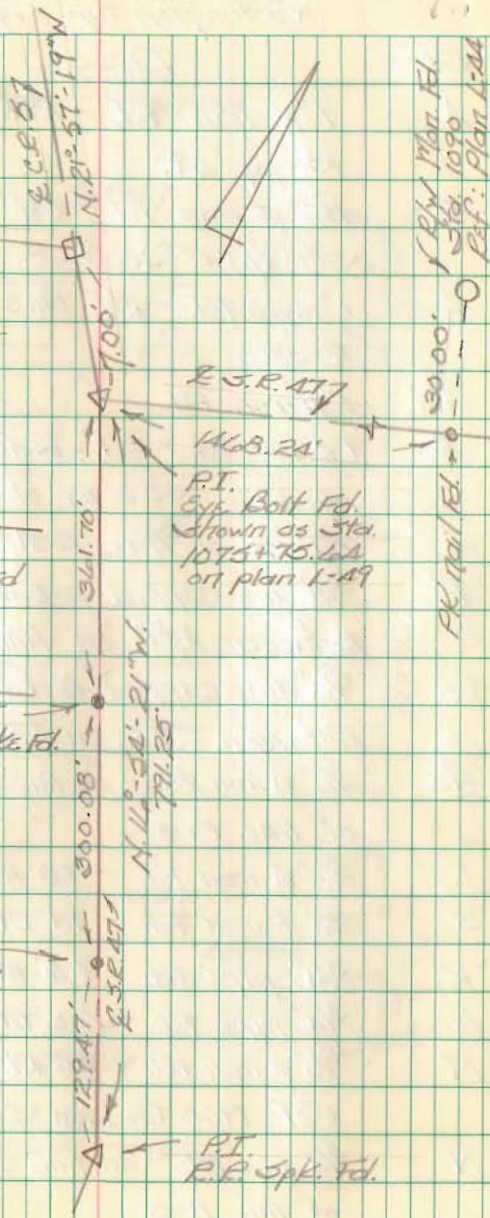
23-24 April 98

E.T.R. 2737

N. 79° 54' 25" E.

Carl Burkholder
0.918 Ac.

Rodger Kennard
1.004 Ac.



2128