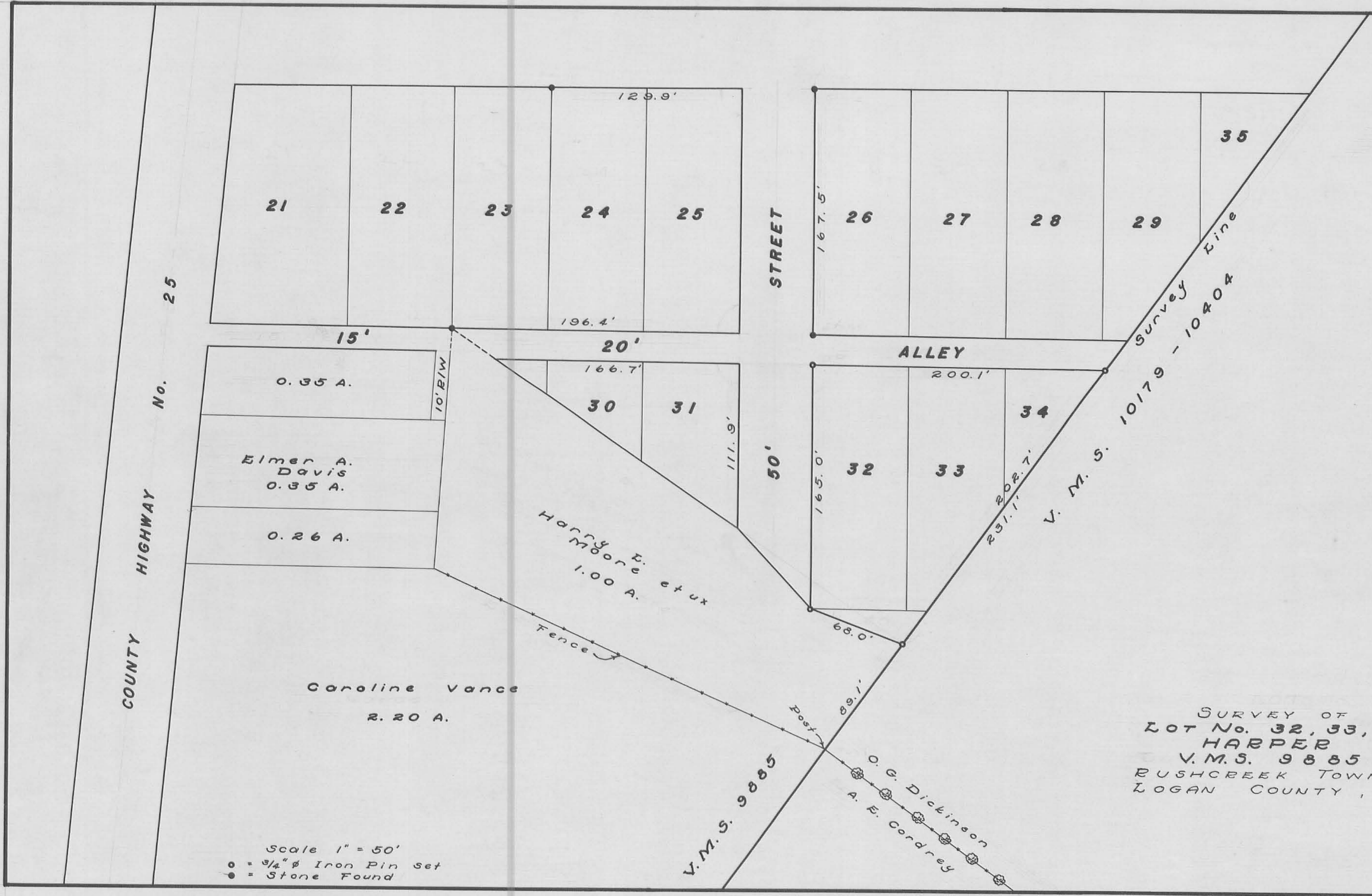


Abram Layport to John C. Williams
 Vol. V. pg. 105 April 23, 1851
 Village of Harper laid out for
 John L. Williams by John L. Harper
 April 25, 1851 Vol. V. pg. 125
 Plat Book B, Vol. 2 pg. 42

MOORE TRACT

Conrad Ketterman to Catharine Beeb
 Vol. 37 pg. 99 Mar. 2, 1861 6.82 A.
 Henry Beeb et al to Geo. Stinson
 Vol. 93 pg. 580 Aug. 16, 1900-1.00 A.
 Geo. Stinson to Sherman Jacobs
 Vol. 94 pg. 553 Oct. 17, 1900
 Sherman Jacobs to J. A. Walters
 Vol. 95 pg. 550 Mar. 23, 1901
 J. A. Walters to Geo. Spry
 Vol. 103 pg. 63 Oct. 10, 1905
 Geo. Spry to A. W. Vance
 Vol. 111 pg. 404 Dec. 23, 1911
 A. W. Vance to Della Wickersham
 Vol. 144 pg. 504 April 27, 1931
 C. F. Wickersham to J. F. Hamilton
 Vol. 148 pg. 393 April 30, 1935
 J. F. Hamilton to Elmer A. Davis
 Vol. 192 pg. 408 Nov. 26, 1947
 Elmer A. Davis to Harry L. Moore
 Vol. 205 pg. 589 Jan. 12, 1952



SURVEY OF
 LOT No. 32, 33, 34
 HARPER
 V. M. S. 9885
 BUSHCREEK TOWNSHIP
 LOGAN COUNTY, OHIO

Scale 1" = 50'
 • = 3/4" ϕ Iron Pin set
 ● = Stone Found

Surveyed & Drawn by
 Dan L. Dodson
 Surveyor in Training
 February, 1955