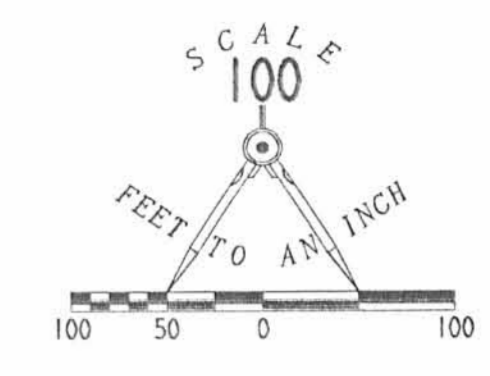


CURVE	DELTA ANGLE	RADIUS	ARC	TANGENT	CHORD	CHORD BEARING
C 1	91°21'26"	25.00'	39.86'	25.60'	35.77'	N 50°26'25"W
C 2	12°53'50"	1143.27'	257.35'	129.22'	256.80'	S 6°31'21"E
C 3	12°50'51"	1434.99'	315.04'	158.19'	314.38'	S 06°20'59"W

REFERENCES
LOGAN COUNTY ENGINEER'S FILES:
R-3447, R-3389, R-1703, R-2714, R-1377
R-5941, R-5534



- LEGEND
- 5/8" IRON ROD SET
 - 5/8" IRON ROD FOUND
 - ⊙ MAG NAIL SET
 - ⊗ RAILROAD SPIKE FOUND
 - ⊕ CONCRETE RIGHT OF WAY MONUMENT FOUND
 - 1/2" SQUARE IRON BAR FOUND
 - MAG NAIL FOUND

SURVEY OF 8 TRACTS OUT OF THE
CARL BURKHOLDER AND ROSETTA BURKHOLDER
ORIGINAL 47.597 ACRE TRACT
OFFICIAL RECORD 298, PAGE 736
VIRGINIA MILITARY SURVEY 3326
RUSHCREEK AND JEFFERSON TOWNSHIP
LOGAN COUNTY, OHIO

2 WORKING DAYS
BEFORE YOU DIG
CALL TOLL FREE 800-362-2764
OHIO UTILITIES PROTECTION SERVICE



SURVEYED BY:
Jeffrey A. Lee
JEFFREY A. LEE
PROFESSIONAL SURVEYOR 6350
JULY 30, 1998
REVISED SEPTEMBER 30, 1998
COPYRIGHT 1998 BY:
LEE SURVEYING & MAPPING CO., INC.
117 North Madriver Street
BELLEFONTAINE, OHIO 43311
(937) 593-7335



Lee Surveying and Mapping Co., Inc.



Land Surveys • Topography • Subdivisions • Construction Layout

117 N. Madriver Street
Bellefontaine OH 43311

Phone: (937) 593-7335
Fax: (937) 593-7444

**BURKHOLDER
TRACT A-1
5.396 ACRES**

Lying in Virginia Military Survey 3326, Rushcreek Township, Logan County, Ohio.

Being out of the Carl Burkholder and Rosetta Burkholder original 47.597 acre tract as deeded and described in Official Record 298, Page 736 of the Logan County Records of Deeds and being more particularly described as follows:

Beginning at a 1/2 inch square iron bar found on the center-line of Ohio Route 47 at the intersection with the center-line of County Highway 5.

THENCE, with the north line of the said 47.597 acre tract and within the right-of-way of Township Road 273, S 84°-20'-34" W, a distance of 255.22 feet to a point.

THENCE, S 5°-39'-26" E, a distance of 25.21 feet to a 5/8 inch iron rod found 30.00 feet south of the center-line of Township Road 273 (currently 50 feet wide), the TRUE POINT OF BEGINNING.

THENCE, with the west lines of the Carl Burkholder 0.918 acre tract (O.R. 312, Pg. 671A), the Roger D. Kennard 1.004 acre tract (O.R. 311, Pg. 364) and said west line extended, S 5°-39'-26" E, a distance of 635.94 feet to a 5/8 inch iron rod found.

THENCE, S 84°-35'-19" W, a distance of 407.42 feet to a 5/8 inch iron rod set.

THENCE, N 4°-45'-42" W, a distance of 419.57 feet to a 5/8 inch iron rod set.

THENCE, with the south line of the Roger D. Kennard 1.027 acre tract (O.R. 311, Pg. 370), N 83°-52'-52" E, a distance of 190.00 feet to a 5/8 inch iron rod found.

THENCE, with the east line of the Roger D. Kennard 1.027 acre tract the following two courses:

N 4°-45'-42" W, a distance of 185.90 feet to a 5/8 inch iron rod found.


With a curve to the left having a central angle of 91°-21'-26", a radius of 25.00 feet, an arc length of 39.86 feet, and having a chord bearing N 50°-26'-25" W, a distance of 35.77 feet to a 5/8 inch iron rod found.

THENCE, parallel and 30 feet distant from the center-line of Township Road 273, N 83°-52'-52" E, a distance of 328.17 feet to the point of beginning.

Containing 5.396 acres.

The basis for bearings is the center-line of Ohio Route 47 west of the intersection with the center-line of Ohio Route 533, being S 85°-30'-00" W, and all other bearings are from angles and distances measured in a field survey by Lee Surveying and Mapping Co., Inc. on May 1, 1998.

Description prepared by:


Jeffrey I. Lee
Professional Surveyor 6359
May 22, 1998



L-2450

ORIGINAL STAMP IN GREEN

INDEXED ON MAP
3309 13D-1

REC'D 6-2-98 SMY OK ✓



Lee Surveying and Mapping Co., Inc.



Land Surveys • Topography • Subdivisions • Construction Layout

117 N. Madriver Street
Bellefontaine OH 43311

Phone: (937) 593-7335
Fax: (937) 593-7444

TRACT B-1 6.520 ACRES

Lying in Virginia Military Survey 3326, Rushcreek Township, Logan County, Ohio.

Being out of the Carl Burkholder and Rosetta Burkholder original 47.597 acre tract as deeded and described in Official Record 298, Page 736 of the Logan County Records of Deeds and being more particularly described as follows:

Beginning at a 1/2 inch square iron bar found on the center-line of Ohio Route 47 at the intersection with the center-line of County Highway 5.

THENCE, with the north line of the said 47.597 acre tract and within the right-of-way of Township Road 273, S 84°-20'-34" W, a distance of 255.22 feet to a point.

THENCE, S 5°-39'-26" E, a distance of 25.21 feet to a 5/8 inch iron rod found 30.00 feet south of the center-line of Township Road 273 (currently 50 feet wide).

THENCE, parallel and 30.00 feet distant from the center-line of Township Road 273, S 83°-52'-52" W, a distance of 492.57 feet to a 5/8 inch iron rod found at the TRUE POINT OF BEGINNING.

THENCE, with the lines of the Roger D. Kennard 1.027 acre tract (O.R. 311, Pg. 370) the following two courses:

S 4°-53'-05" E, a distance of 211.49 feet to a 5/8 inch iron rod found.

N 83°-52'-52" E, a distance of 95.00 feet to a 5/8 inch iron rod set.

THENCE, S 4°-45'-42" E, a distance of 419.57 feet to a 5/8 inch iron rod set.

THENCE, S 84°-07'-56" W, a distance of 475.02 feet to a 5/8 inch iron rod found.

THENCE, with the east line of the Steven R. Gregg 57.55 acre tract (O.R. 105, Pg. 556) N 4°-45'-42" W, a distance of 656.22 feet to a 5/8 inch iron rod found.

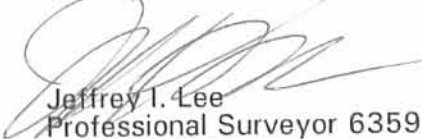
THENCE, 30 feet distant and parallel to the center-line of Township Road 273, N 88°-10'-52" E, a distance of 363.14 feet to a 5/8 inch iron rod found.

THENCE N 83°-52'-52" E, a distance of 17.30 feet to the point of beginning.

Containing 6.520 acres.

The basis for bearings is the center-line of Ohio Route 47 west of the intersection with the center-line of Ohio Route 533, being S 85°-30'-00" W, and all other bearings are from angles and distances measured in a field survey by Lee Surveying and Mapping Co., Inc. on May 1, 1998.

Description prepared by:


Jeffrey I. Lee
Professional Surveyor 6359
May 22, 1998



ORIGINAL STAMP IN GREEN

INDEXED ON MAP
3389 13D-2

REC'D 6-2-98 SMY OK ✓



Lee Surveying and Mapping Co., Inc.



Land Surveys • Topography • Subdivisions • Construction Layout

117 N. Madriver Street
Bellefontaine OH 43311

Phone: (937) 593-7335
Fax: (937) 593-7444

BURKHOLDER TRACT E-1 9.346 ACRES

Lying in Virginia Military Survey 3326, Rushcreek Township, Logan County, Ohio.

Being out of the Carl Burkholder and Rosetta Burkholder original 47.597 acre tract as deeded and described in Official Record 298, Page 736 of the Logan County Records of Deeds and being more particularly described as follows:

Beginning at a 1/2 inch square iron bar found on the center line of Ohio Route 47 at the intersection with the center-line of County Highway 5.

THENCE, with the center-line of Ohio Route 47 (60 feet wide), S 12°-58'-16" E, a distance of 361.66 feet to a railroad spike found at the TRUE POINT OF BEGINNING.

THENCE, with the center-line of Ohio Route 47, S 12°-58'-16" E, a distance of 300.38 feet to a MAG nail found.

THENCE, with the center-line of Ohio Route 47, a curve to the right having a central angle of 12°-53'-50", a radius of 1143.27 feet, an arc length of 257.35 feet, and a chord bearing S 6°-31'-21" E, a distance of 256.80 feet to a MAG nail found.

THENCE, continuing with the center-line of Ohio Route 47, S 0°-04'-26" E, a distance of 64.23 feet to a MAG nail set.

THENCE, S 84°-47'-00" W, a distance of 290.62 feet to a 5/8 inch iron rod set, passing a 5/8 inch iron rod set at 30.12 feet.

THENCE, N 5°-13'-00" W, a distance of 78.71 feet to a 5/8 inch iron rod set.

THENCE, S 84°-47'-00" W, a distance of 933.15 feet to a 5/8 inch iron rod set on the east line of the Steven R. Gregg 57.55 acre tract, (O.R. 105, Pg. 556).

THENCE, with the east line of the said 57.55 acre tract, N 4°-45'-42" W, a distance of 228.12 feet to a 5/8 inch iron rod found.

THENCE, N 84°-07'-56" E, a distance of 475.02 feet to a 5/8 inch iron rod set.

THENCE, N 84°-35'-19" E, a distance of 407.42 feet to a 5/8 inch iron rod found.

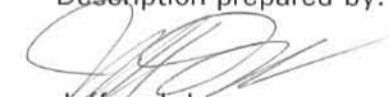
THENCE, N 5°-39'-26" W, a distance of 300.00 feet to a 5/8 inch iron rod found.

THENCE, with the south line of the Roger D. Kennard 1.004 acre tract (O.R. 311, Pg. 364), N 83°-52'-52" E, a distance of 301.27 feet to the point of beginning, passing a 5/8 inch iron rod found at 271.05 feet.

Containing 9.346 acres of which 0.429 acre is within the highway right-of-way.

The basis for bearings is the center-line of Ohio Route 47 west of the intersection with the center-line of Ohio Route 533, being S 85°-30'-00" W, and all other bearings are from angles and distances measured in a field survey by Lee Surveying and Mapping Co., Inc. on May 1, 1998.

Description prepared by:


Jeffrey T. Lee
Professional Surveyor 6359
May 22, 1998



L-2450

ORIGINAL STAMP IN GREEN

INDEXED ON MAP
330913D-3

REC'D 6-2-98 SMY BAC ✓



Lee Surveying and Mapping Co., Inc.



Land Surveys • Topography • Subdivisions • Construction Layout

117 N. Madriver Street
Bellefontaine OH 43311

Phone: (937) 593-7335
Fax: (937) 593-7444

BURKHOLDER TRACT K-1 6.026 ACRES

Lying in Virginia Military Survey 3326, Rushcreek Township, Logan County, Ohio.

Being out of the Carl Burkholder and Rosetta Burkholder original 47.597 acre tract as deeded and described in Official Record 298, Page 736 of the Logan County Records of Deeds and being more particularly described as follows:

Beginning at a 1/2 inch square iron bar found on the center line of Ohio Route 47 at the intersection with the center-line of County Highway 5.

THENCE, with the center-line of Ohio Route 47 (60 feet wide), S 12°-58'-16" E, a distance of 662.04 feet to a MAG nail found.

THENCE, with the center-line of Ohio Route 47, a curve to the right having a central angle of 12°-53'-50", a radius of 1143.27 feet, an arc length of 257.35 feet, and a chord bearing S 6°-31'-21" E, a distance of 256.80 feet to a MAG nail found.

THENCE, continuing with the center-line of Ohio Route 47, S 0°-04'-26" E, a distance of 214.23 feet to a MAG nail found at the TRUE POINT OF BEGINNING.

THENCE, with the center-line of Ohio Route 47, S 0°-04'-26" E, a distance of 69.48 feet to a MAG nail found at a point of curvature.

THENCE, continuing with the center-line of Ohio Route 47, a curve to the right having a central angle of 12°-50'-51", a radius of 1434.99 feet, an arc length of 315.04 feet, and a chord bearing S 6°-20'-59" W, a distance of 314.38 feet to a MAG nail found.

THENCE, continuing with the center-line of Ohio Route 47, S 12°-46'-25" W, a distance of 40.47 feet to a railroad spike found.

THENCE, with the north line of the Richard H. Smiley 5.013 acre tract, (O.R. 234, Pg. 710), S 85°-29'-05" W, a distance of 574.27 feet to a 5/8 inch iron rod found, passing a 5/8 inch iron rod found at 31.42 feet.

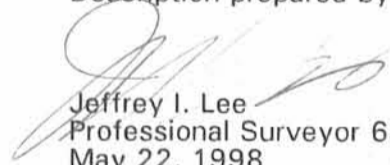
THENCE, N 5°-23'-09" W, a distance of 415.24 feet to a 5/8 inch iron rod set.

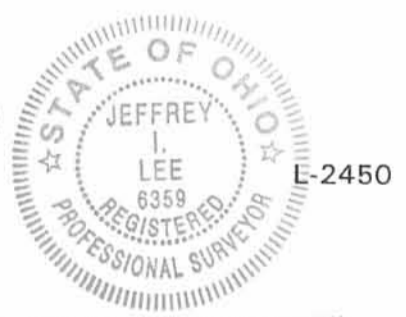
THENCE, N 84°-47'-00" E, a distance of 658.56 feet to the point of beginning, passing a 5/8 inch iron rod found at 628.50 feet.

Containing 6.026 acres of which 0.297 acre is within the highway right-of-way.

The basis for bearings is the center-line of Ohio Route 47 west of the intersection with the center-line of Ohio Route 533, being S 85°-30'-00" W, and all other bearings are from angles and distances measured in a field survey by Lee Surveying and Mapping Co., Inc. on May 1, 1998.

Description prepared by:


Jeffrey I. Lee
Professional Surveyor 6359
May 22, 1998



ORIGINAL STAMP IN GREEN

INDEXED ON MAP
3389 13D4

REC'D 6-2-98 SMY OK ✓



Lee Surveying and Mapping Co., Inc.



Land Surveys • Topography • Subdivisions • Construction Layout

117 N. Madriver Street
Bellefontaine OH 43311

Phone: (937) 593-7335
Fax: (937) 593-7444

BURKHOLDER TRACT M-1 9.178 ACRES

Lying in Virginia Military Survey 3326, Rushcreek and Jefferson Townships, Logan County, Ohio.

Being out of the Carl Burkholder and Rosetta Burkholder original 47.597 acre tract as deeded and described in Official Record 298, Page 736 of the Logan County Records of Deeds and being more particularly described as follows:

Beginning at a 5/8 inch iron rod found on the center-line of Ohio Route 47 at the intersection with the center-line of Ohio Route 533.

THENCE, with the center-line of Ohio Route 47, S 85°-30'-00" W, a distance of 440.78 feet to a railroad spike found at the TRUE POINT OF BEGINNING.

THENCE, with the center-line of Ohio Route 47, S 85°-30'-00" W, a distance of 256.00 feet to a MAG nail set.

THENCE, N 4°-45'-42" W, a distance of 296.85 feet to a 5/8 inch iron rod set, passing a 5/8 inch iron rod set at 30.00 feet.

THENCE, with the North line extended and the North line of the Roger D. Kennard 1.022 acre tract (O.R. 311, PG. 367), S 85°-30'-00" W, a distance of 300.00 feet to a 5/8 inch iron rod found.

THENCE, with the east line of the Steven R. Gregg 57.55 acre tract (O.R. 105, Pg. 556), N 4°-45'-42" W, a distance of 724.05 feet to a 5/8 inch iron rod set.

THENCE, S 59°-58'-59" E, a distance of 191.00 feet to a 5/8 inch iron rod set.

THENCE, S 18°-46'-11" E, a distance of 75.01 feet to a 5/8 inch iron rod set.

THENCE, N 84°-47'-00" E, a distance of 378.53 feet to a 5/8 inch iron rod set.

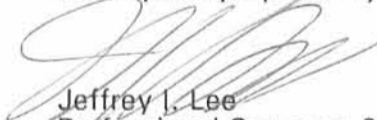
THENCE, S 5°-23'-09" E, a distance of 415.24 feet to a 5/8 inch iron rod found.

THENCE, with the west line of the Richard H. Smiley 5.013 acre tract, (O.R. 234, Pg. 710), S 4°-29'-01" E, a distance of 429.51 feet to the point of beginning, passing a 5/8 inch iron rod set at 399.51 feet.

Containing 9.178 acres of which 0.847 acre is in Jefferson Township with 0.177 acre in the highway right-of-way, and 8.331 acres are in Rushcreek Township.

The basis for bearings is the center-line of Ohio Route 47 west of the intersection with the center-line of Ohio Route 533, being S 85°-30'-00" W, and all other bearings are from angles and distances measured in a field survey by Lee Surveying and Mapping Co., Inc. on May 1, 1998.

Description prepared by:


Jeffrey I. Lee
Professional Surveyor 6359
May 22, 1998



L-2450

INDEXED ON MAP
3389 13D-5



Lee Surveying and Mapping Co., Inc.



Land Surveys • Topography • Subdivisions • Construction Layout

117 N. Madriver Street
Bellefontaine OH 43311

Phone: (937) 593-7335
Fax: (937) 593-7444

BURKHOLDER TRACT P 1.022 ACRES

Lying in Virginia Military Survey 3326, Rushcreek and Jefferson Townships, Logan County, Ohio.

Being out of the Carl Burkholder and Rosetta Burkholder original 47.597 acre tract as deeded and described in Official Record 298, Page 736 of the Logan County Records of Deeds and being more particularly described as follows:

Beginning at a 5/8 inch iron rod found on the center-line of Ohio Route 47 at the intersection with the center-line of Ohio Route 533.

THENCE, with the center-line of Ohio Route 47, S 85°-30'-00" W, a distance of 696.78 feet to a MAG nail set at the TRUE POINT OF BEGINNING.

THENCE, with the center-line of Ohio Route 47, S 85°-30'-00" W, a distance of 150.00 feet to a railroad spike found.

THENCE, with the east line of the Roger D. Kennard 1.022 acre tract (O.R. 311, Pg. 367), N 4°-45'-42" W, a distance of 296.85 feet to a 5/8 inch iron rod found, passing a 5/8 inch iron rod found at 30.00 feet.

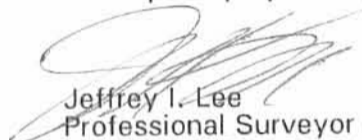
THENCE, N 85°-30'-00" E, a distance of 150.00 feet to a 5/8 inch iron rod set.

THENCE, S 4°-45'-42" E, a distance of 296.85 feet to the point of beginning, passing a 5/8 inch iron rod set at 266.85 feet.

Containing 1.022 acres of which 0.584 acre is in Jefferson Township with 0.103 acre within the highway right-of-way, and 0.438 acre is in Rushcreek Township.

The basis for bearings is the center-line of Ohio Route 47 west of the intersection with the center-line of Ohio Route 533, being S 85°-30'-00" W, and all other bearings are from angles and distances measured in a field survey by Lee Surveying and Mapping Co., Inc. on May 1, 1998.

Description prepared by:


Jeffrey I. Lee
Professional Surveyor 6359
May 1, 1998



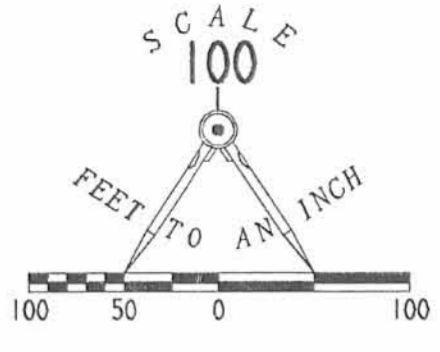
INDEXED ON MAP
3389 13D6

IMOGENE LENMART
82.06 ACRES
O.R. 27, PG. 804

TOWNSHIP ROAD 273 (50')

V.M.S. 3323
V.M.S. 3326

CURVE	DELTA ANGLE	RADIUS	ARC	TANGENT	CHORD	CHORD BEARING
C 1	91°21'26"	25.00'	39.86'	25.60'	35.77'	N 50°26'25"W
C 2	12°53'50"	1143.27'	257.35'	129.22'	256.80'	S 6°31'21"E
C 3	12°50'51"	1434.99'	315.04'	158.19'	314.38'	S 06°20'59"W



REFERENCES
LOGAN COUNTY ENGINEER'S FILES:
R-3447, R-3389, R-1703, R-2714, R-1377
R-5941, R-5534

LEGEND

- 5/8" IRON ROD SET
- 5/8" IRON ROD FOUND
- ⊙ MAG NAIL SET
- ⊗ RAILROAD SPIKE FOUND
- ⊕ CONCRETE RIGHT OF WAY MONUMENT FOUND
- 1/2" SQUARE IRON BAR FOUND
- ⊗ MAG NAIL FOUND

STEVEN R. GREGG
57.55 ACRES
O.R. 105, PG. 556

TRACT B-1
6.520 ACRES

TRACT A-1
5.396 ACRES

TRACT E-1
9.346 ACRES
OF WHICH 0.429 ACRE IS
WITHIN THE HIGHWAY RIGHT-OF-WAY

TRACT J
5.389 ACRES
OF WHICH 0.103 ACRE IS
WITHIN THE HIGHWAY RIGHT-OF-WAY

TRACT K-1
6.026 ACRES
OF WHICH 0.297 ACRE IS
WITHIN THE HIGHWAY RIGHT-OF-WAY

TRACT M-1
9.178 ACRES
OF WHICH 0.177 ACRE IS
WITHIN THE HIGHWAY RIGHT-OF-WAY

TRACT P
1.022 ACRES
OF WHICH 0.103 ACRE IS
WITHIN THE HIGHWAY RIGHT-OF-WAY

RICHARD H. SMILEY
5.013 ACRES
O.R. 234, PG. 710

RUSHCREEK TOWNSHIP
JEFFERSON TOWNSHIP

SURVEY OF 7 TRACTS OUT OF THE
CARL BURKHOLDER AND ROSETTA BURKHOLDER
ORIGINAL 47.597 ACRE TRACT
OFFICIAL RECORD 298, PAGE 736
VIRGINIA MILITARY SURVEY 3326
RUSHCREEK AND JEFFERSON TOWNSHIP
LOGAN COUNTY, OHIO

2 WORKING DAYS
BEFORE YOU DIG
CALL TOLL FREE 800-362-2764
OHIO UTILITIES PROTECTION SERVICE.



SURVEYED BY:
Jeffrey L. Lee
JEFFREY L. LEE
PROFESSIONAL SURVEYOR 6359
MAY 1, 1998
COPYRIGHT 1998 BY:
LEE SURVEYING & MAPPING CO., INC.
117 North Medivac Street
BELLEFONTAINE, OHIO 43111
(937) 593-7335

Received 9-30-98



Lee Surveying and Mapping Co., Inc.



Land Surveys • Topography • Subdivisions • Construction Layout

117 N. Madriver Street
Bellefontaine OH 43311

Phone: (937) 593-7335
Fax: (937) 593-7444

BURKHOLDER TRACT M-2 10.200 ACRES

Lying in Virginia Military Survey 3326, Rushcreek and Jefferson Townships, Logan County, Ohio.

Being out of the Carl Burkholder and Rosetta Burkholder original 47.597 acre tract as deeded and described in Official Record 298, Page 736 of the Logan County Records of Deeds and being more particularly described as follows:

Beginning at a 5/8 inch iron rod found on the center-line of Ohio Route 47 at the intersection with the center-line of Ohio Route 533.

THENCE, with the center-line of Ohio Route 47, S 85°-30'-00" W, a distance of 440.78 feet to a railroad spike found at the TRUE POINT OF BEGINNING.

THENCE, with the center-line of Ohio Route 47, S 85°-30'-00" W, a distance of 406.00 feet to a railroad spike found.

THENCE, with the east line of the Roger D. Kennard 1.022 acre tract, (O.R. 311, Pg. 367), N 4°-45'-42" W, a distance of 296.85 feet to a 5/8 inch iron rod set, passing a 5/8 inch iron rod set at 30.00 feet.

THENCE, with the north line of the said 1.022 acre tract, S 85°-30'-00" W, a distance of 150.00 feet to a 5/8 inch iron rod found.

THENCE, with the east line of the Steven R. Gregg 57.55 acre tract (O.R. 105, Pg. 556), N 4°-45'-42" W, a distance of 724.05 feet to a 5/8 inch iron rod set.

THENCE, S 59°-58'-59" E, a distance of 191.00 feet to a 5/8 inch iron rod set.

THENCE, S 18°-46'-11" E, a distance of 75.01 feet to a 5/8 inch iron rod set.

THENCE, N 84°-47'-00" E, a distance of 378.53 feet to a 5/8 inch iron rod set.

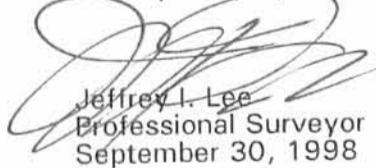
THENCE, S 5°-23'-09" E, a distance of 415.24 feet to a 5/8 inch iron rod found.

THENCE, with the west line of the Richard H. Smiley 5.013 acre tract, (O.R. 234, Pg. 710), S 4°-29'-01" E, a distance of 429.51 feet to the point of beginning, passing a 5/8 inch iron rod set at 399.51 feet.

Containing 10.200 acres of which 1.431 acre is in Jefferson Township with 0.280 acre in the highway right-of-way, and 8.769 acres are in Rushcreek Township.

The basis for bearings is the center-line of Ohio Route 47 west of the intersection with the center-line of Ohio Route 533, being S 85°-30'-00" W, and all other bearings are from angles and distances measured in a field survey by Lee Surveying and Mapping Co., Inc. on May 1, 1998.

Description prepared by:


Jeffrey I. Lee
Professional Surveyor 6359
September 30, 1998



L-2450

ORIGINAL STAMP IN GREEN

INDEXED ON MAP
3389 14D

REV'D 7-24-08 SMOCK

Lee Surveying and Mapping Co., Inc.

Land Surveys • Topography • Subdivisions • Construction Layout

117 N. Madriver St.
Bellefontaine OH 43311



Phone: (937) 593-7335
Fax: (937) 593-7444

HEFNER 0.838 ACRE

Lying in Virginia Military Survey 3326, Rushcreek Township, Logan County, Ohio.

Being all of the remainder of the Ronald W. Hefner 1.026 acre tract as deeded and described in Official Record 561, Page 849 of the Logan County Records of Deeds and being more particularly described as follows:

Commencing on a monument box found at P.I. Station 1062+12.05 (LOG-47-19.75) of Ohio Route 47.

THENCE, along the tangent of Ohio Route 47, S 12°-46'-40"W, a distance of 202.03 feet to a MAG nail set on the center-line of Ohio Route 47.

THENCE, with the north line of the Ronald W. Hefner 5.013 acre tract (O.R. 500, Pg. 419) extended, S 85°-29'-20"W, a distance of 54.00 feet to a 5/8 inch iron rod set at the TRUE POINT OF BEGINNING.

THENCE, with the north line of the said 5.013 acre tract, S 85°-29'-20"W, a distance of 221.71 feet to a 5/8 inch iron rod found.

THENCE, with the lines of the Gregory Frasure 5.000 acre tract (O.R. 520, Pg. 230), the following two courses:

N 04°-30'-40"W, a distance of 150.00 feet to a 5/8 inch iron rod found.

N 85°-29'-20"E, a distance of 265.19 feet to a 5/8 inch iron rod set.

THENCE, with a west line of the State of Ohio, Department of Transportation, 1.652 acre tract (Parcel 5 WD, O.R. 818, Pg. 806), S 11°-39'-22"W, a distance of 156.18 feet to the point of beginning.

Containing 0.838 acres.

The basis for bearings is the center-line of Ohio Route 47, being S 12°-46'-40"W, and all other bearings are from angles and distances measured in a field survey by Lee Surveying and Mapping Co., Inc. on July 21, 2008.

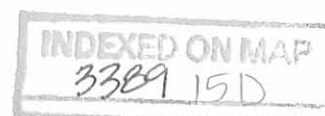


ORIGINAL STAMP IN GREEN

Description prepared by:

William K. Bruce
Professional Surveyor 7437
July 22, 2008

2450078



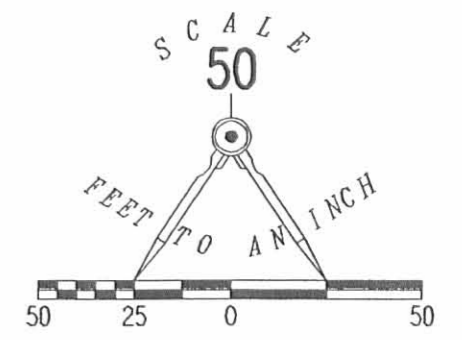
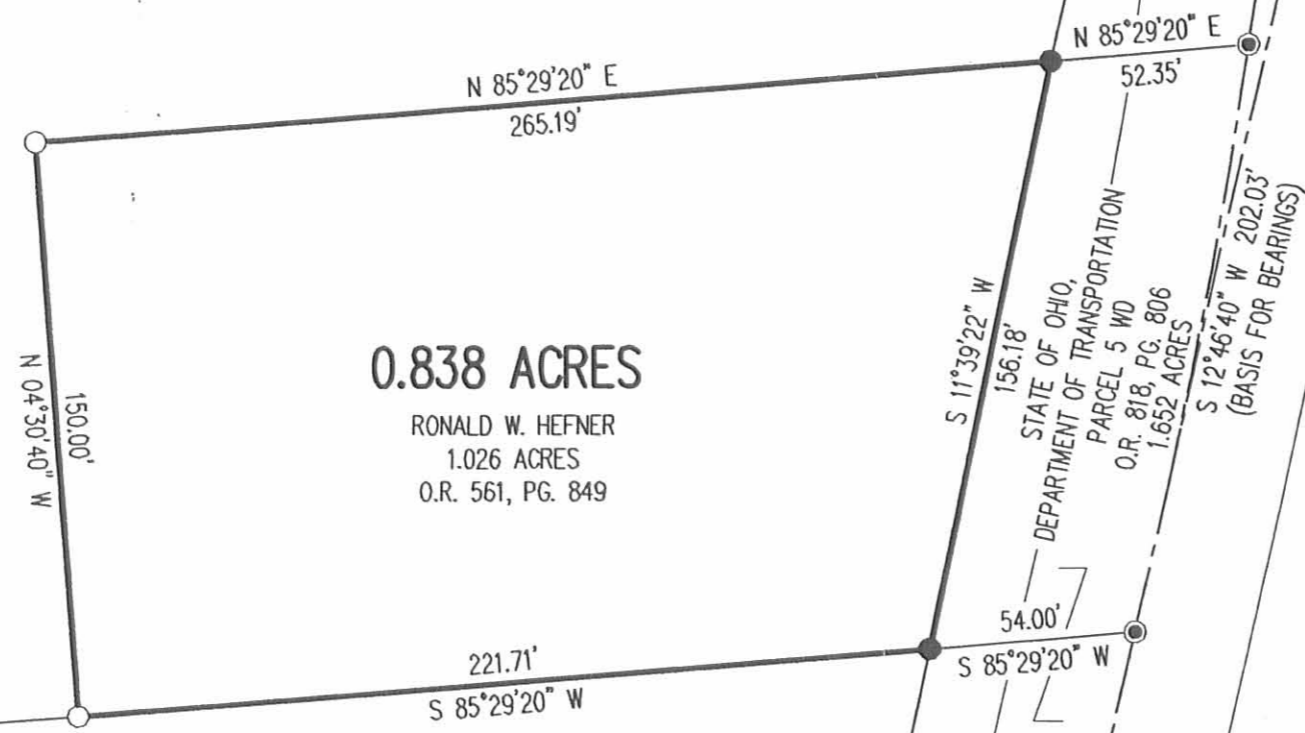
REC'D 7-24-08 smj/oll

GREGORY FRASURE
5.000 ACRES
O.R. 520, PG. 230

0.838 ACRES
RONALD W. HEFNER
1.026 ACRES
O.R. 561, PG. 849

RONALD W. HEFNER
5.013 ACRES
O.R. 500, PG. 419

2 WORKING DAYS
BEFORE YOU DIG
CALL TOLL FREE **800-362-2764**
OHIO UTILITIES PROTECTION SERVICE



- LEGEND:
- MONUMENT BOX FOUND
 - MAG NAIL SET
 - 5/8 INCH IRON ROD SET
 - 5/8 INCH IRON ROD FOUND

**SURVEY OF THE REMAINDER OF THE
RONALD W. HEFNER
1.026 ACRE TRACT
OFFICIAL RECORD 561, PAGE 849
VIRGINIA MILITARY SURVEY 3326
RUSHCREEK TOWNSHIP
LOGAN COUNTY, OHIO**



ORIGINAL STAMP IN GREEN

SURVEYED BY:

William K. Bruce
WILLIAM K. BRUCE
PROFESSIONAL SURVEYOR 7437
JULY 21, 2008

COPYRIGHT 2008 BY:
LEE SURVEYING & MAPPING CO., INC.
117 North Madriver Street
BELLEFONTAINE, OHIO 43311
(937) 593-7335
surveys@lsminc.us
KSS D0708 2450078 L-2450-3

INDEXED ON MAP
3389 15P

Lee Surveying and Mapping Co., Inc.

Land Surveys • Topography • Subdivisions • Construction Layout

117 N. Madriver St.
Bellefontaine OH 43311



Phone: (937) 593-7335
Fax: (937) 593-7444
surveys@lsminc.us

COBLENTZ 20 FEET WIDE DRAINAGE EASEMENT

Lying in Virginia Military Survey 3326, Rushcreek Township, Logan County, Ohio.

Being the center-line of a 20 feet wide drainage easement through the Mahlon Coblentz 7.286 acre tract deeded and described in Official Record 718, Page 305, Tract I and through the Mahlon Coblentz 1.000 acre tract deeded and described in Official Record 780, Page 994, Tract II of the Logan County Records of Deeds and being more particularly described as follows:

Commencing at a 1/2 inch square iron bar found at Ohio Route 47 P.I. Station 1075+75.64 at the intersection of center-lines of Ohio Route 47 and County Highway 5.

THENCE, with the center-line of Ohio Route 47, S 12°-58'-16"E, a distance of 192.49 feet to a point.

THENCE, with south line of the James M. Ward and Debra K. Ward 0.918 acre tract (O.R. 382, Pg. 286, Tract II) and the south line of the James M. Ward and Debra K. Ward 0.231 acre tract (O.R. 382, Pg. 286, Tract I), S 83°-52'-52"W, a distance of 339.74 feet to a 5/8 inch iron rod found.

THENCE, with the west line of the said 0.231 acre tract, N 05°-39'-26"W, a distance of 6.54 feet to a 5/8 inch iron rod set at THE TRUE POINT OF BEGINNING.

THENCE, with the center-line of a 20 feet wide drainage easement the following two courses:

S 77°-02'-41"W, a distance of 60.49 feet to a 5/8 inch iron rod set on the east line of the aforesaid 1.000 acre tract.

S 62°-29'-49"W, a distance of 194.51 feet to a point at the terminus of this easement, a 5/8 inch iron rod found that bears N 60°-13'-55"W, a distance of 7.00 feet.

The sidelines of said easement to be shortened or prolonged to meet at angle point intersections.

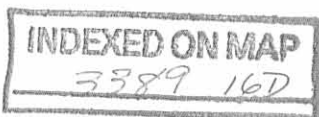
The basis for bearings is the center-line of Ohio Route 47, being S 12°-58'-16"E, and all other bearings are from angles and distances measured in a field survey by Lee Surveying and Mapping Co., Inc. on January 5, 2012.

Description prepared by:

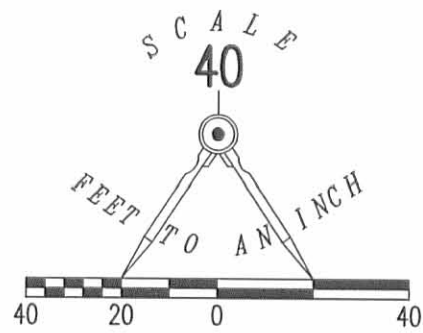
William K. Bruce
Professional Surveyor 7437
January 5, 2012



L-5135



REC'D 1-6-12 SMY OK

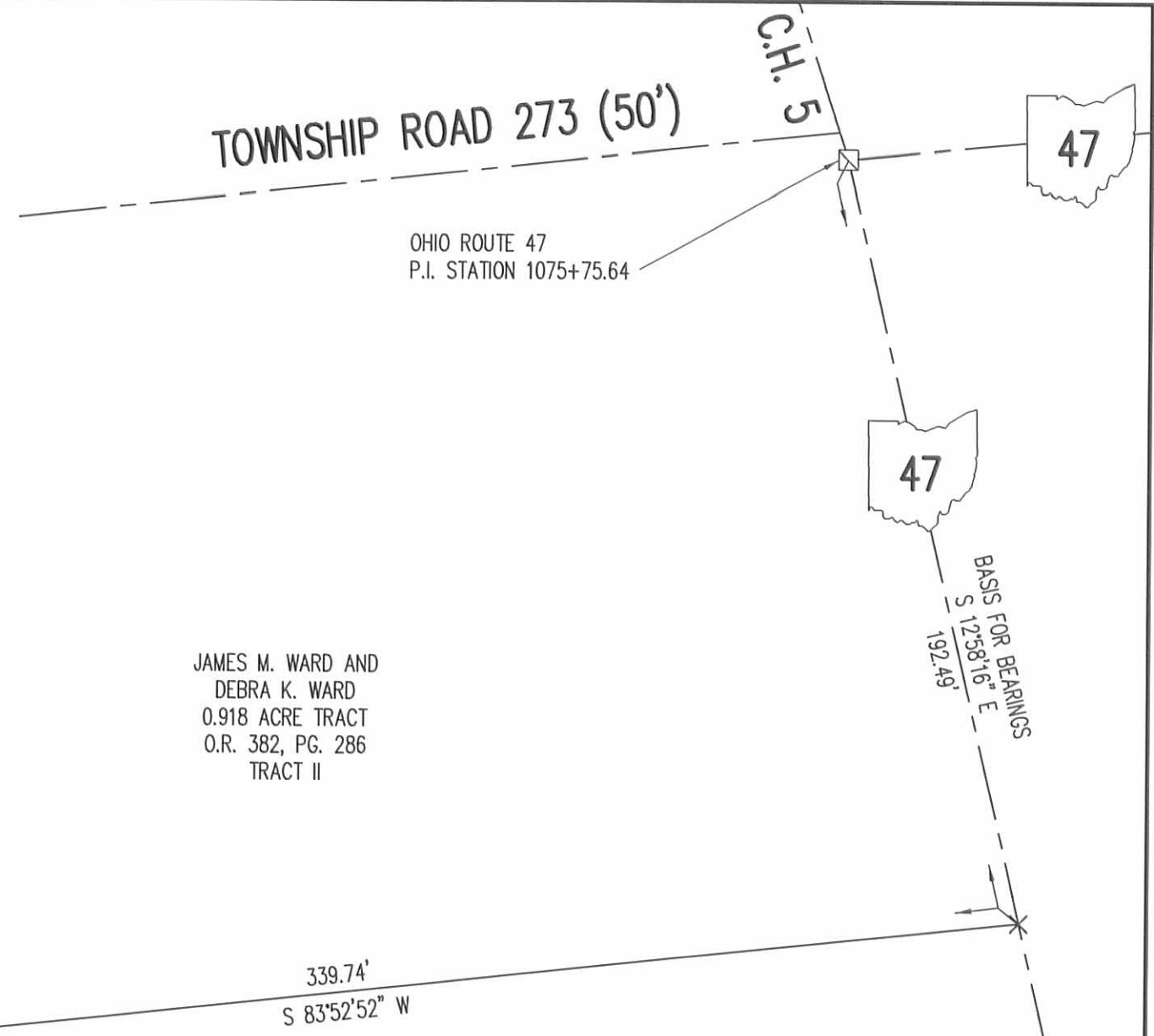


2 WORKING DAYS
BEFORE YOU DIG
CALL TOLL FREE **800-362-2764**
OHIO UTILITIES PROTECTION SERVICE.

LEGEND

- 5/8 INCH IRON ROD SET WITH PLASTIC I.D. CAP STAMPED "LSM 7437"
- 5/8 INCH IRON ROD FOUND
- ◻ 1/2 INCH SQUARE IRON BAR FOUND

SURVEY OF A 20 FEET WIDE DRAINAGE EASEMENT THROUGH THE MAHLON COBLENTZ 7.286 ACRE TRACT OFFICIAL RECORD 718, PAGE 305, TRACT I AND THE MAHLON COBLENTZ 1.000 ACRE TRACT OFFICIAL RECORD 780, PAGE 994, TRACT II VIRGINIA MILITARY SURVEY 3326 RUSHCREEK TOWNSHIP LOGAN COUNTY, OHIO



SURVEYED BY:

William K. Bruce
WILLIAM K. BRUCE
PROFESSIONAL SURVEYOR 7437
JANUARY 5, 2012



COPYRIGHT 2012 BY:
LEE SURVEYING & MAPPING CO., INC.
117 North Madriver Street
BELLEFONTAINE, OHIO 43311
(937) 593-7335
WWW.LSMINC.US
surveys@lsminc.us
ADW D0112 51350112 L-5135-3

INDEXED ON MAP
3389 16P