

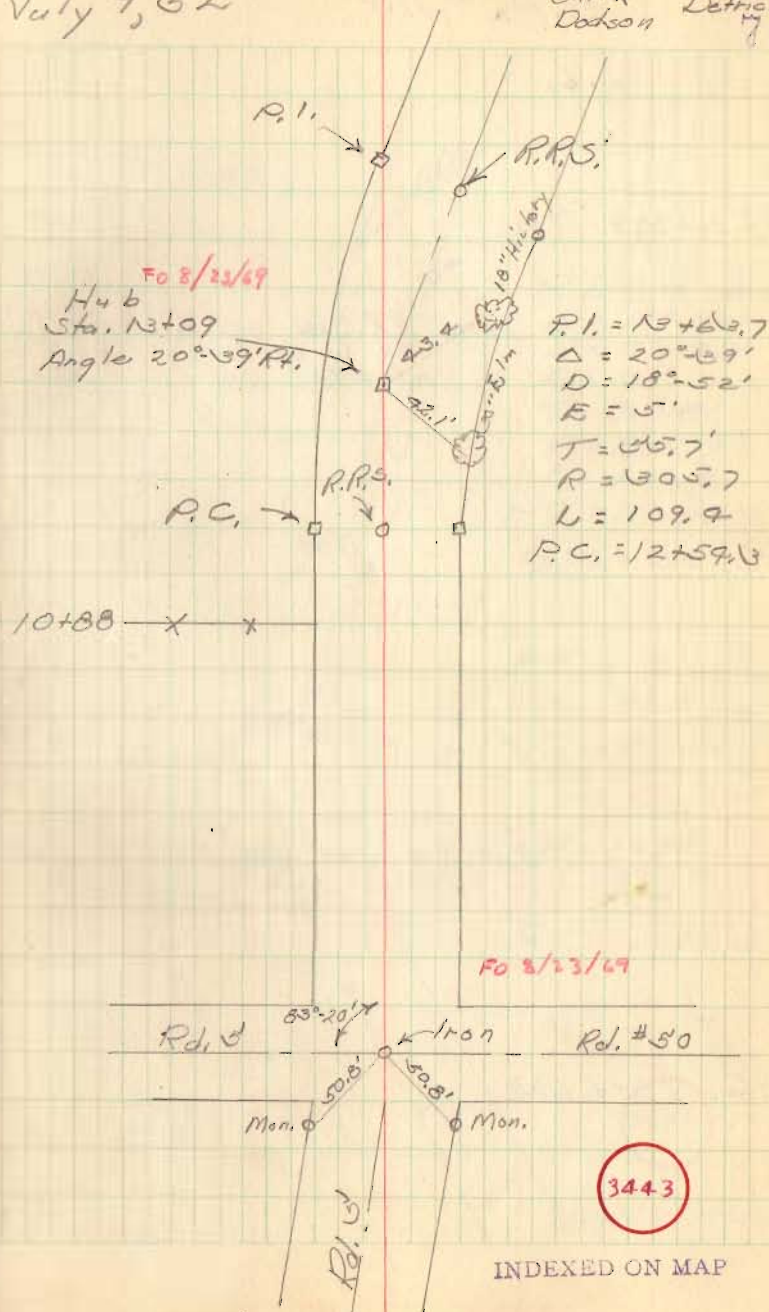
C.H. # 110 (60' wide)
FB 701 from Rd. 5 to S.H. 579
Hub

P.T. 13+63.7

P.C. 12+59.3

July 9, 52

Wilgus
Shirk
Dodson
Mohr
Detrick



FB 701

C.H. # 110

Hubs

P.T. 21+70.1

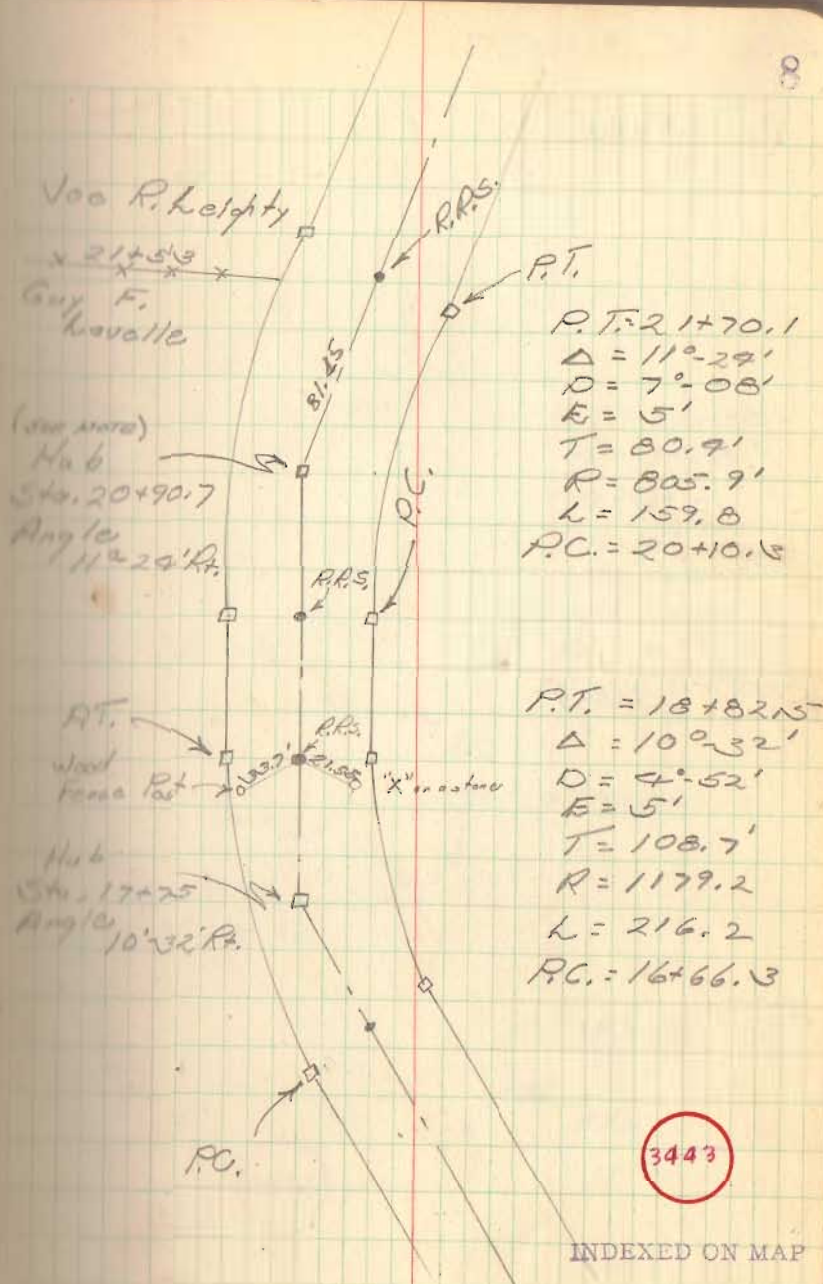
NOTE: R.R. SPK. SET @ STA. 20+90.7
BY INTER. TAN.
12/24/73 LHG

P.C. 20+10.3

P.T. 18+82.5

R.R. SPK. SET STA. 17+75
12/24/73 LHG
REF 6-2/76

P.C. 16+66.3



3443

INDEXED ON MAP

C.H. 110

Habb

FB 701

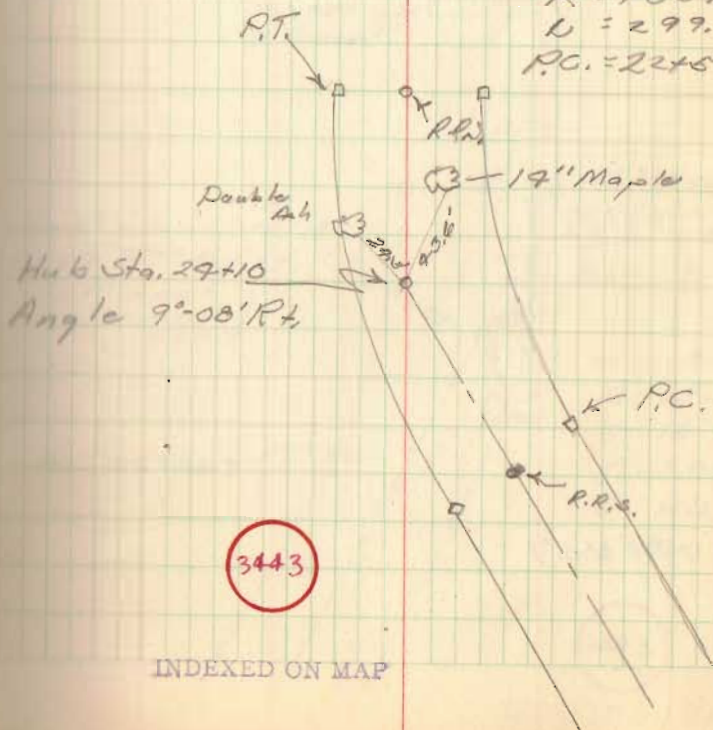
P.T. 25+58.9

P.C. 22+59.5

9

N 58° 02' E (Calc.)

$P.T. = 25+58.9$
 $\Delta = 9^{\circ} 00'$
 $D = 6^{\circ} 06'$
 $E = 6'$
 $T = 1540.5$
 $R = 1889.2$
 $U = 299.9$
 $P.C. = 22+59.5$



3443

INDEXED ON MAP

C.H. 110

FB 701 Hubs

P.T. 44+71.2

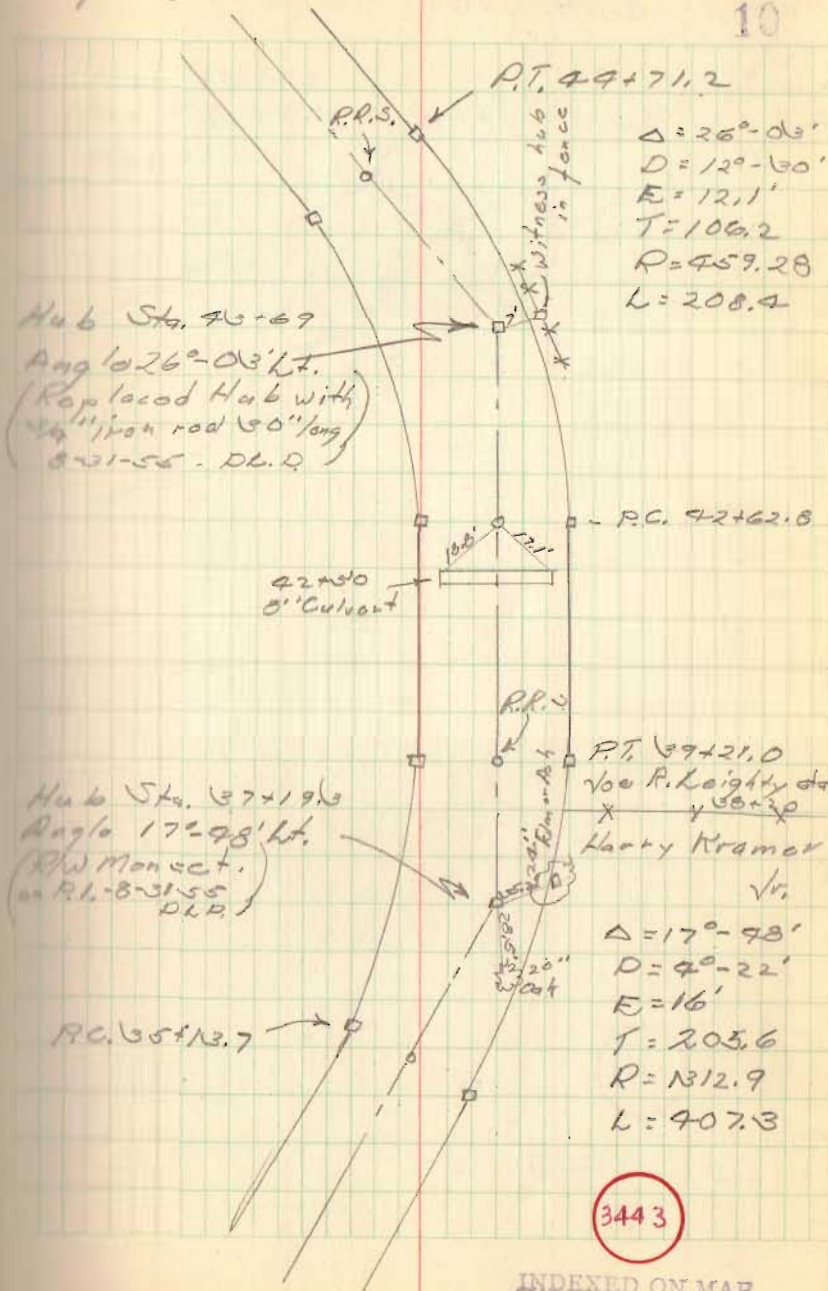
P.C. 42+62.8

P.T. 37+21

P.C. 35+13.7

July 10, '52

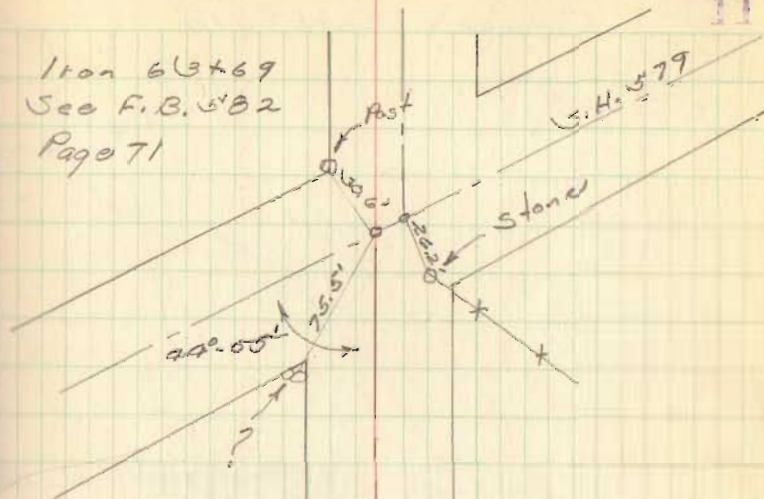
10



FB 701

C. H. 110

Itan 63+69
See F.B. 582
Page 71



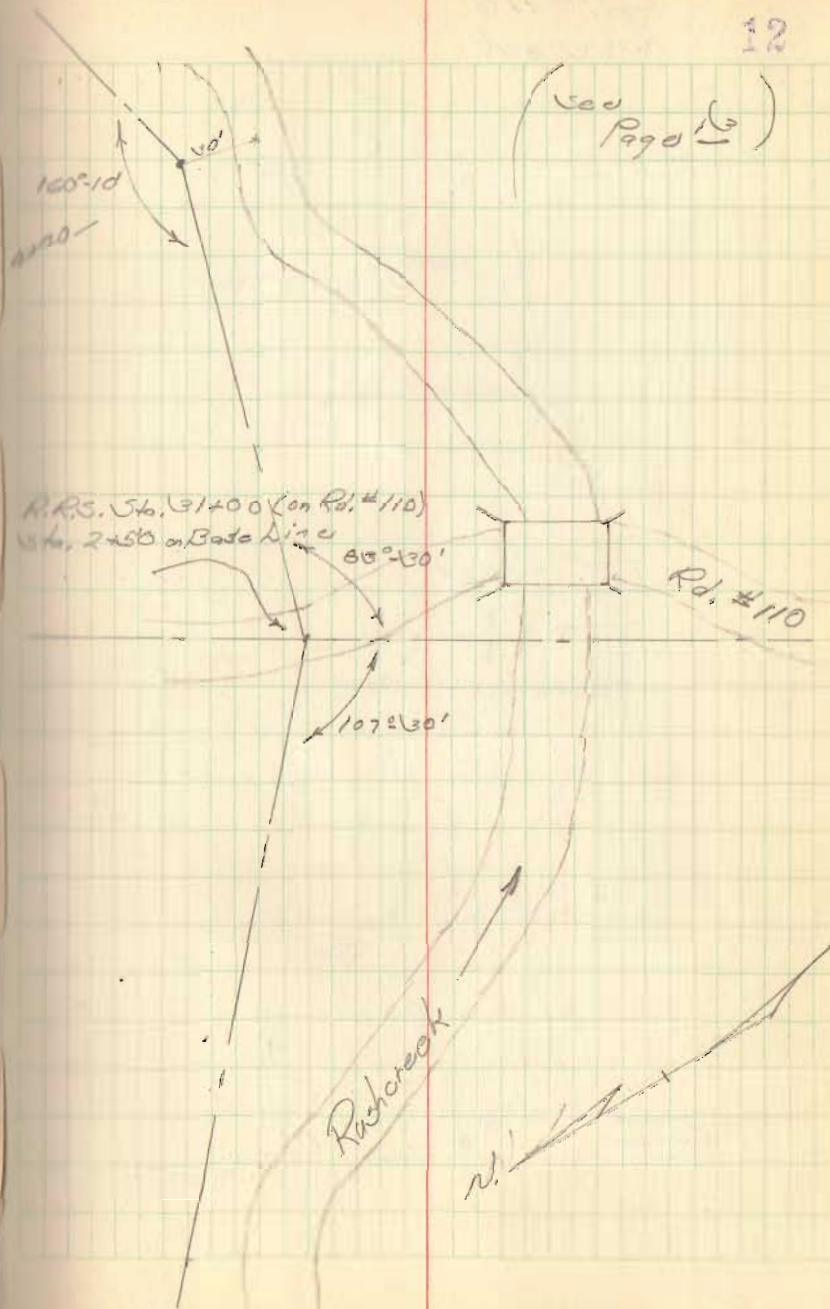
11

3443

INDEXED ON MAP

Base line on Rush Creek,
FB 701 Crosse's C.H. # 110

12



FB 701

Rd. # 110
Rushrock

