

**RICKY L. MARMON SURVEY
TRACT I
0.227 ACRES
February 23, 2004**

The following described 0.227 acre tract of land is situated in Virginia Military Survey 3314, Rushcreek Township, Logan County, Ohio and being part of Ian and Susan Pasco's 89.936 acre tract described in Official Record 446, page 254, said 0.227 acre tract more particularly described as follows:

Beginning for reference at a 5/8 inch iron pin found in the centerline of State Route 47 (variable right-of-way width) at P.I. Station 1185+51.38 as referenced on Highway Plan L-49, said iron pin also marking the southeast corner of V.M.S. 3314, the northeast corner of V.M.S. 3325, and the southeast corner of said 89.936 acre tract;

Thence South 85°08'00" West 2514.45 feet, following the centerline of State Route 47, the south line of V.M.S. 3314, and the north line of V.M.S. 3325, to a magnetic nail set at an angle point in the south line of said 89.936 acre tract and at the southwest corner of Ricky L. and Jeanne B. Marmon's 5.51 acre tract described in Official Record 82, page 409, said magnetic nail marking the **place of beginning**;

Thence **South 85°08'00" West 16.50 feet**, continuing along the centerline of State Route 47, the south line of V.M.S. 3314, the north line of V.M.S. 3325, and following the south line of said 89.936 acre tract, to a magnetic nail set at the southeast corner of Amanda J. Prinkey's Tract II, 0.63 acre, described in Deed Volume 371, page 1;

Thence **North 4°55'33" West 600.00 feet**, departing from the centerline of State Route 47 and the north line of V.M.S. 3325, entering V.M.S. 3314, following the east line of said 0.63 acre tract and the west line of said 89.936 acre tract, passing an iron pin set at 45.00 feet, to an iron pin set;

Thence **North 85°08'00" East 16.50 feet**, departing from the east line of said 0.63 acre tract and crossing said 89.936 acre tract, to a one inch iron pin found at the northwest corner of said 5.51 acre tract;

Thence **South 4°55'33" East 600.00 feet**, following the west line of said 5.51 acre tract and the south line of said 89.936 acre tract, passing an iron pin set at 555.00 feet, to the **place of beginning, containing 0.227 acre**, more or less, and subject to all valid easements and restrictions of record.

Of the above-described 0.227 acre tract of land, 0.017 acre is within the road right-of-way of State Route 47.

The above description was prepared from an actual field survey made by George A. Blackburn, Registered Surveyor #7873, during the month of February 2004. Iron pins set are 5/8 inch by 30 inch reinforcing rods with plastic caps marked "Blackburn RS #7873." Bearings indicated herein are based on the centerline of State Route 47 bearing South 85°08'00" West.

Description prepared by: George A. Blackburn 2/23/04
George A. Blackburn, R.S. #7873
12125 Green Street
Middleburg, Ohio 43336
(937) 666-5605



**RICKY L. MARMON SURVEY
TRACT II
0.227 ACRES
February 23, 2004**

The following described 0.227 acre tract of land is situated in Virginia Military Survey 3314, Rushcreek Township, Logan County, Ohio and being part of Ricky L. and Jeanne B. Marmon's 5.51 acre tract described in Official Record 82, page 409, said 0.227 acre tract more particularly described as follows:

Beginning for reference at a 5/8 inch iron pin found in the centerline of State Route 47 (variable right-of-way width) at P.I. Station 1185+51.38 as referenced on Highway Plan L-49, said iron pin also marking the southeast corner of V.M.S. 3314 and the northeast corner of V.M.S. 3325;

Thence South 85°08'00" West 2114.45 feet, following the centerline of State Route 47, the south line of V.M.S. 3314, and the north line of V.M.S. 3325, to a magnetic nail set at the southeast corner of said 5.51 acre tract and at an angle point in the south line of Ian and Susan Pasco's 89.936 acre tract described in Official Record 446, page 254, said magnetic nail marking the **place of beginning**;

Thence **South 85°08'00" West 16.50 feet**, continuing along the centerline of State Route 47, the south line of V.M.S. 3314, the north line of V.M.S. 3325, and following the south line of said 5.51 acre tract, to a magnetic nail set;

Thence **North 4°55'33" West 600.00 feet**, departing from the centerline of State Route 47 and the north line of V.M.S. 3325, entering V.M.S. 3314, crossing said 5.51 acre tract, passing an iron pin set at 45.00 feet, to an iron pin set in the south line of said 89.936 acre tract;

Thence **North 85°08'00" East 16.50 feet**, following the north line of said 5.51 acre tract and the south line of said 89.936 acre tract, to a one inch iron pin found;

Thence **South 4°55'33" East 600.00 feet**, following the east line of said 5.51 acre tract and the south line of said 89.936 acre tract, passing an iron pin set at 550.00 feet, to the **place of beginning, containing 0.227 acre**, more or less, and subject to all valid easements and restrictions of record.

Of the above-described 0.227 acre tract of land, 0.017 acre is within the road right-of-way of State Route 47.

The above description was prepared from an actual field survey made by George A. Blackburn, Registered Surveyor #7873, during the month of February 2004. Iron pins set are 5/8 inch by 30 inch reinforcing rods with plastic caps marked "Blackburn RS #7873." Bearings indicated herein are based on the centerline of State Route 47 bearing South 85°08'00" West.

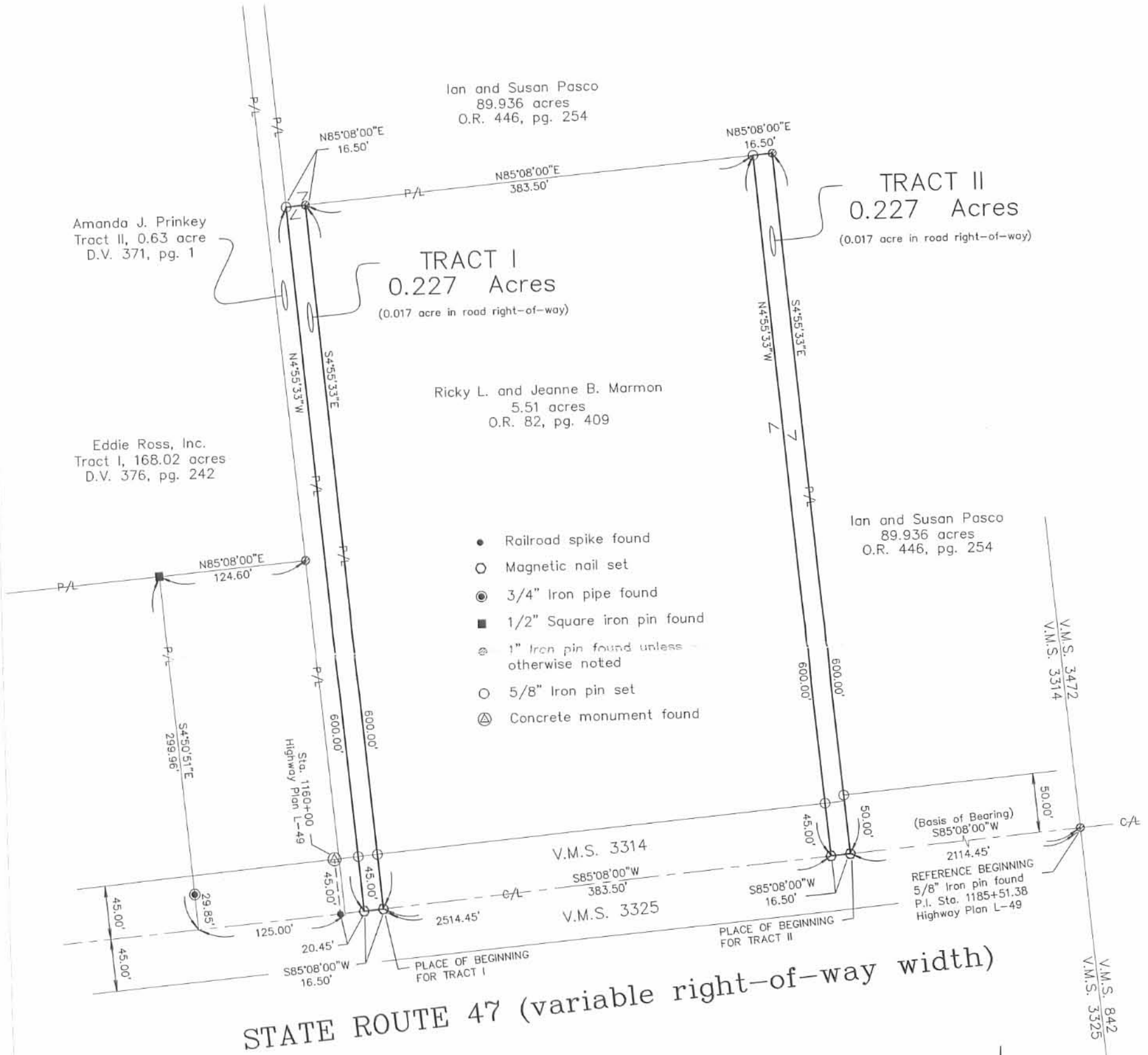
Description prepared by: George A. Blackburn 2/23/04
George A. Blackburn, R.S. #7873
12125 Green Street
Middleburg, Ohio 43336
(937) 666-5605



INDEXED ON MAP
4857 10-2

REV'D 3-1-04 SMY OK

VIRGINIA MILITARY SURVEY 3314 RUSHCREEK TOWNSHIP LOGAN COUNTY, OHIO



STATE ROUTE 47 (variable right-of-way width)

RICKY L. MARMON SURVEY

Being a 0.227 acre tract split out of Ricky L. and Jeanne B. Marmon's 5.51 acre tract described in Official Record 82, page 409 and a 0.227 acre tract split out of Ian and Susan Pasco's 89.936 acre tract described in Official Record 446, page 254.



I hereby certify that this plat was prepared from an actual field survey and that monuments were placed as indicated hereon.

George A. Blackburn 2/23/04
George A. Blackburn, R.S. 7873

Filename: Marmon 2-04
Scale: 1" = 100'
Date: 2/23/04
F.B. 9, pg. 68

INDEXED ON MAP
4857 IP

BLACKBURN SURVEYING
12125 GREEN STREET
MIDDLEBURG, OHIO 43336
(937) 666-5605

Webber Description No. IV
87.72 Acres

The following described real estate, situated in the Townships of Bokescreek, Perry and Rushcreek, County of Logan, State of Ohio and being a part of Virginia Military Survey No. 842 and being more particularly described as follows:

Beginning at an iron pin at the intersection of the Centerlines of S. R. No. 47 and C. H. No. 12 and in the north line of V.M.S. No. 842;

Thence with the centerline of S. R. No. 47, N. 85° 04' 30" E. 1478.10 feet to a point at the northwest corner to lands of Harry L. VanCleve et al, passing through an iron pin at 783.0 feet, said iron pin being the line between Rushcreek and Bokescreek Townships;

Thence with the west line of VanCleve, S. 8° 20' 30" E. 3238.10 feet to a post in the north line of William Fred Levans 65.50 Acre tract, passing the line between Bokescreek and Perry Townships at 3075.60 feet;

Thence with Levans north line, S. 84° 49' W. 891.0 feet to a point in the centerline of C. H. No. 12 (said point being Sta. 52 + 70.35 as shown in F. B. No. 703 Page 27, Logan County Engineers Office);

Thence with the centerline of C. H. No. 12, W. 18° 11' W. 3314.10 feet to the place of beginning, passing through the line between Perry and Bokescreek Townships at 313.50 feet and the line between Bokescreek and Rushcreek Townships at 1435.0 feet, containing 87.72 Acres, more or less. Of the above described 87.72 Acres, there is 66.29 Acres in Bokescreek Township, 5.16 Acres in Perry Township and 16.27 Acres in Rushcreek Township.

I hereby certify that this is a true and accurate description as prepared by me on July 22, 1971.



Daniel E. Gilbert
Daniel E. Gilbert, P.S.
Reg. Sur. No. 5402
428 N. Madriver St.
Bellefontaine, Ohio 43311

INDEXED ON MAP
4857 2D-5

Webber Description No. I
168.02 Acres

The following described real estate, situated in the Township of Rushcreek, County of Logan, State of Ohio and being a part of Virginia Military Survey No. 3314 and being more particularly described as follows:

Beginning at an iron pin at the southwest corner to Virginia Military Survey No. 3314 and in the centerline of S. R. No. 47 (said iron pin being Sta. 1114 + 67.30 as shown on Plan L-49, Logan County Engineers Office);

Thence with the west line of V.M.S. No. 3314, N. 3° 50' W. 1749.0 feet to a post, southwest corner to Charles E. Whitney's 51.66 acre tract;

Thence with Whitney's and Ross' south line, N. 85° 08' E. 3181.20 feet to a post, southeast corner to Ross' 108.34 acre tract;

Thence with Ross' east line, N. 5° 48' W. 573.0 feet to a post, southwest corner to Ross' 69.03 Acre tract;

Thence with Ross' south line, N. 84° 28' E. 1287.0 feet to a post in the east line of Edith Vance's 23.38 Acre tract;

Thence with the east line of Edith Vance's tract and a 16.5 foot lane, S. 4° 57' E. 2010.0 feet to an iron bar, north east corner to Eddie Ross' 7.74 Acre tract;

Thence with Ross' , Painter's, Furer's and Ross' lines, the following six courses and distances, S. 85° 08' W. 2316.80 feet to an iron, N. 27° 07' W. 302.9 feet to an iron, S. 76° 32' W. 419.10 feet to an iron, S. 20° 37' E. 224.10 feet to an iron, S. 85° 08' W. 964.5 feet to an iron and S. 3° 08' E. 300.2 feet to a point in the center line of S. R. No. 47 and the south line of V.M.S. No. 3314;

Thence with said south line and centerline of S. R. No. 47, S. 85° 08' W. 769.0 feet to the place of beginning, containing 168.02 Acres, more or less.

I hereby certify that this is a true and accurate description as prepared by me on July 22, 1971.



Daniel E. Gilbert
Daniel E. Gilbert, P.S.
Reg. Sur. No. 5402
428 N. Madriver St.
Bellefontaine, Ohio 43311

INDEXED ON MAP
4857 2D-1

Webber Description No. II
90.23 Acres

The following described real estate, situated in the Township of Rushcreek, County of Logan, State of Ohio and being a part of Virginia Military Survey No. 3314 and being more particularly described as follows:

Beginning at a point in the centerline of S. R. No. 47 (being Sta. 1160 + 20.5 as shown on Plan L-49, Logan County Engineers Office), said point also being in the south line of V.M.S. No. 3314;

Thence with the east line of 16.5 foot lane, N. 4° 57' W. 1658.30 feet to a post in the south line of Edith Vance's tract;

Thence with Vance's and McKeever's south line, N. 85° 08' E. 2515.0 feet to a post in the east line of V.M.S. No. 3314;

Thence with the east line of V.M.S. No. 3314; S. 5° 30' E. 1658.30 feet to an iron pin in the centerline of S. R. No. 47 (being Sta. 1185 + 51.38 as shown on Plan L-49) and also being the southeast corner to V.M.S. No. 3314;

Thence with the centerline of S. R. No. 47 and the south line of V.M.S. No. 3314, S. 85° 08' W. 1151.10 feet to an iron pin, southeast corner to Edward L. Culp's 0.31 Acre tract;

Thence with Culp's east line, N. 4° 52' W. 115.0 feet to an iron pipe, northeast corner to Culp;

Thence with Culp's north line, S. 85° 08' W. 117.0 feet to an iron pipe, northwest corner to Culp;

Thence with Culp's west line, S. 4° 52' E. 115.0 feet to an iron pin in the centerline of S. R. No. 47 and the south line of V.M.S. No. 3314;

Thence with the centerline of S. R. No. 47 and the south line of V.M.S. No. 3314, S. 85° 08' W. 846.30 feet to a point at the southeast corner to Jimmy C. Null's 5.51 Acre tract

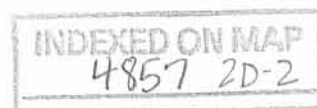
Thence with Null's east line, N. 4° 57' W. 600.0 feet to an iron pin, northeast corner to Null;

Thence with Null's north line, S. 85° 08' W. 400.0 feet to an iron pin, northwest corner to Null;

Thence with Null's west line, S. 4° 57' E. 600.0 feet to a point in the centerline of S. R. No. 47 and the south line of V.M.S. No. 3314;

Thence with the centerline of S. R. No. 47 and the south line of V.M.S. No. 3314, S. 85° 08' W. 16.5 feet to the place of beginning, containing 90.23 Acres, more or less.

I hereby certify that this is a true and accurate description as prepared by



me on July 22, 1971.



Daniel E. Gilbert
Daniel E. Gilbert, P.S.
Reg. Sur. No. 5402
428 N. Madriver St.
Bellefontaine, Ohio 43311

INDEXED ON MAP
4857 2D-3

Webber Description No. III
42.56 Acres

The following described real estate, situated in the Township of Rushcreek, County of Logan, State of Ohio and being a part of Virginia Military Survey No. 842 and being more particularly described as follows:

Beginning at an iron pin, said iron pin being the Northwest corner to V.M.S. No. 842 and being the centerline of S. R. No. 47 (being Sta. 1185 + 51.38 as shown on Plan L - 49, Logan County Engineers Office);

Thence with the centerline of S. R. No. 47 and the north line of V.M.S. No. 842, N. 85° 10' E. 994.80 feet to an iron pin at the intersection of the centerline of S. R. No. 47 and C. H. No. 12; (being Sta. 1195 + 46.20, S.R. No. 47 and being Sta. 85 + 84.4 as shown in Logan County Engineers Field Book No. 703 Page 29 of C. H. No. 12);

Thence with the centerline of C. H. No. 12, S. 18° 11' E. 1608.70 feet to a point, said point being the northeast corner to the Springfield, Ohio Girl Scouts, Inc. 49.36 Acre tract;

Thence with the north line of said Girl Scouts tract, S. 85° 19' W. 1362.90 feet to a post in the west line of V.M.S. No. 842;

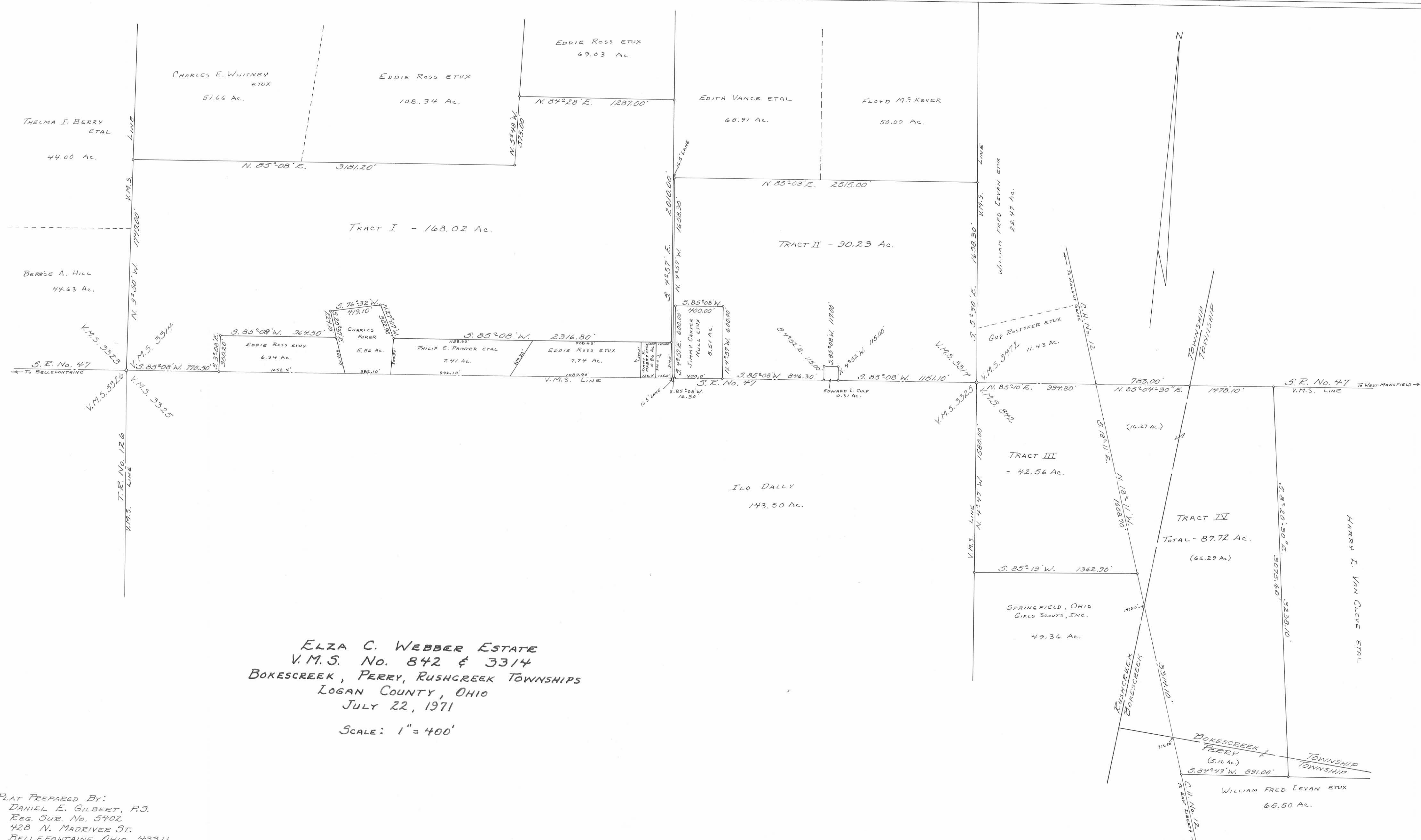
Thence with west line of V.M.S. No. 842, N. 4° 47' W. 1580.0 feet to the place of beginning, containing 42.56 Acres, more or less.

I hereby certify that this is a true and accurate description as prepared by me on July 22, 1971.



Daniel E. Gilbert
Daniel E. Gilbert, P.S.
Reg. Sur. No. 5402
428 N. Madriver St.
Bellefontaine, Ohio 43111

INDEXED ON MAP
4857 2D-4



ELZA C. WEBBER ESTATE
 V.M.S. No. 842 & 3314
 BOKESCREEK, PERRY, RUSHCREEK TOWNSHIPS
 LOGAN COUNTY, OHIO
 JULY 22, 1971
 SCALE: 1" = 400'

PLAT PREPARED BY:
 DANIEL E. GILBERT, P.S.
 REG. SUR. No. 5402
 428 N. MADRIVER ST.
 BELLEFONTAINE, OHIO 43311