

C.R.# 101

Mac Arthur, Richland, + Rushcreek Twp.

Sta.

23+93.72 Found E.R Spike 1.35' left of C

22+43.72 Found RR Spike 1.23' left of C

20+93.84 Found RR Spike 1.08' left of C

(20+00) RR Spike

18+38.43 Found R.P. spike .81' left of C

18+25.64 Found Stone Angle left (0°-01'-20" / 0°-02'-40")

(15+00) R.R. Spike

(10+00) R.R. Spike

(5+00) R.R. Spike

INDEXED ON MAP

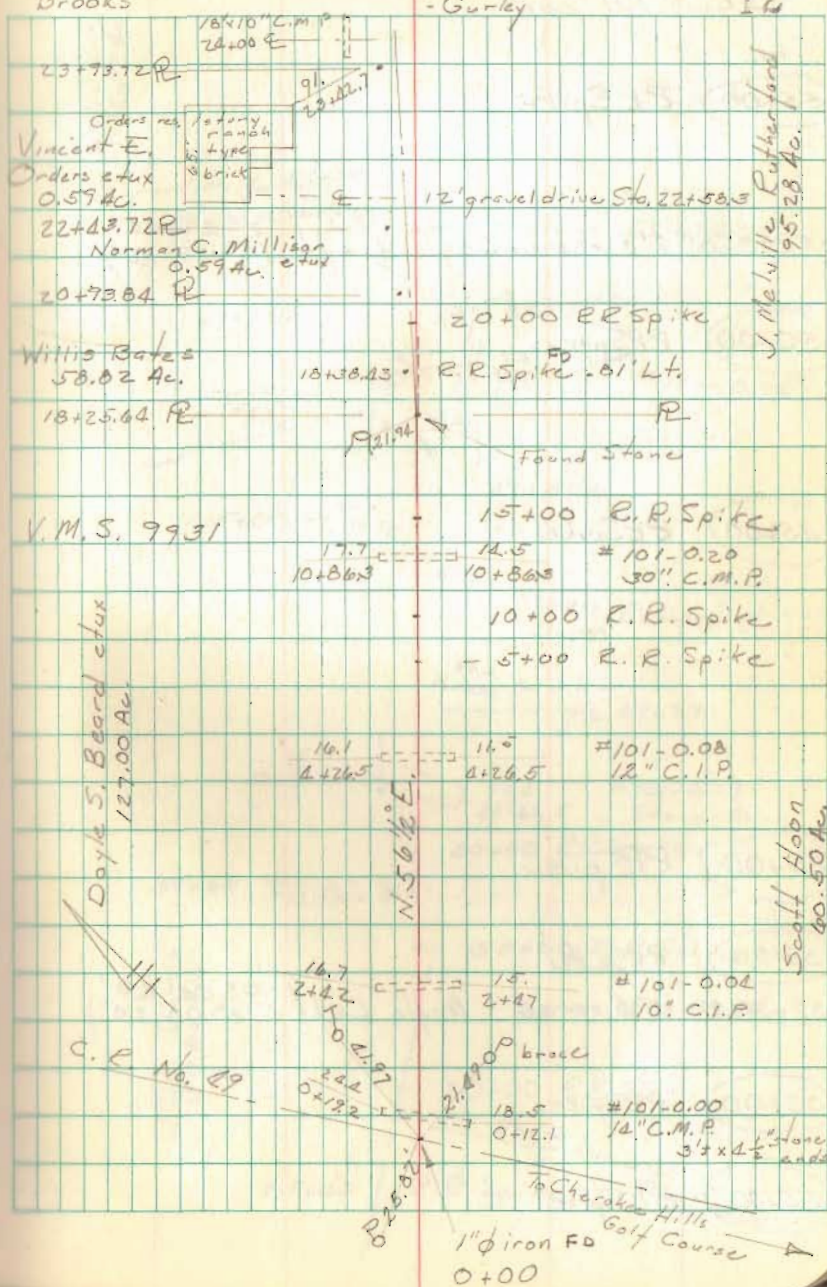
4895

(1+00)

0+00 1" iron FD

Nichols
Beach
Brooks8 Aug. 1969
Sunny - 70°-80°
- Gurley

12



C.R. #101 cont.

Sta,

(55+00) R.R. Spike

52+35.85 1" iron set Angle Left $2^{\circ}29'40''$
 $(4^{\circ}59'20'')$

(50+00) R.R. Spike

(45+00) R.R. Spike

(40+00) R.R. Spike

(35+00) R.R. Spike

32+58.95 1" iron set Angle Left $9^{\circ}04'20''$
 $(13^{\circ}08'20'')$

(30+00) R.R. Spike

(25+00) R.R. Spike

13

Willis Bates
94.32 Ac.

12' gravel dr. E 52+54

R 12" Wehler (30)

24.95

55+00 R.R. Spike

1" iron set 52+35.85

49+73.4

50+00 R.R. Spike

7.8

+76.1

#101-0.94

8.1

8.1

8.1

8.1

7.7

7.7

7.7

7.7

7.7

7.7

7.7

7.7

7.7

7.7

7.7

7.7

7.7

7.7

7.7

7.7

7.7

7.7

7.7

7.7

7.7

7.7

7.7

7.7

7.7

7.7

7.7

7.7

7.7

7.7

7.7

45+00 R.R. Spike

21+72

2 story Rutherford res. frames

80.2

21+52

E 41+29

15.8

20+91.81

13.4

20+64.5

#101-0.77

Stone Arch

40+00 R.R. Spike

39+65

E 1/2 Field Dr

35+00 R.R. Spike

1" iron 32+58.95

30+00 R.R. Spike

27+39 Ungravelled

25+00

R.R. Spike

Field drive

Willis Bates
58.82 Ac.

C.R. # 101 cont.

Sta.

~~86+53.77~~ ^{CR}
~~85+53.77~~ Found R.R. Spike .10' left of C

(85+00) R.R. Spike man. set on Right only.

(80+00) R.R. spike

(75+00) R.R. spike

72+08.15 1" ϕ iron Angle Left $1^{\circ}24'-30''$
($2^{\circ}15'-40''$)

70+04.65 7/8" ϕ iron set Angle Left $0^{\circ}16'-40''$
($0^{\circ}33'-20''$)

(70+00) R.R. Spike

(65+00) R.R. Spike

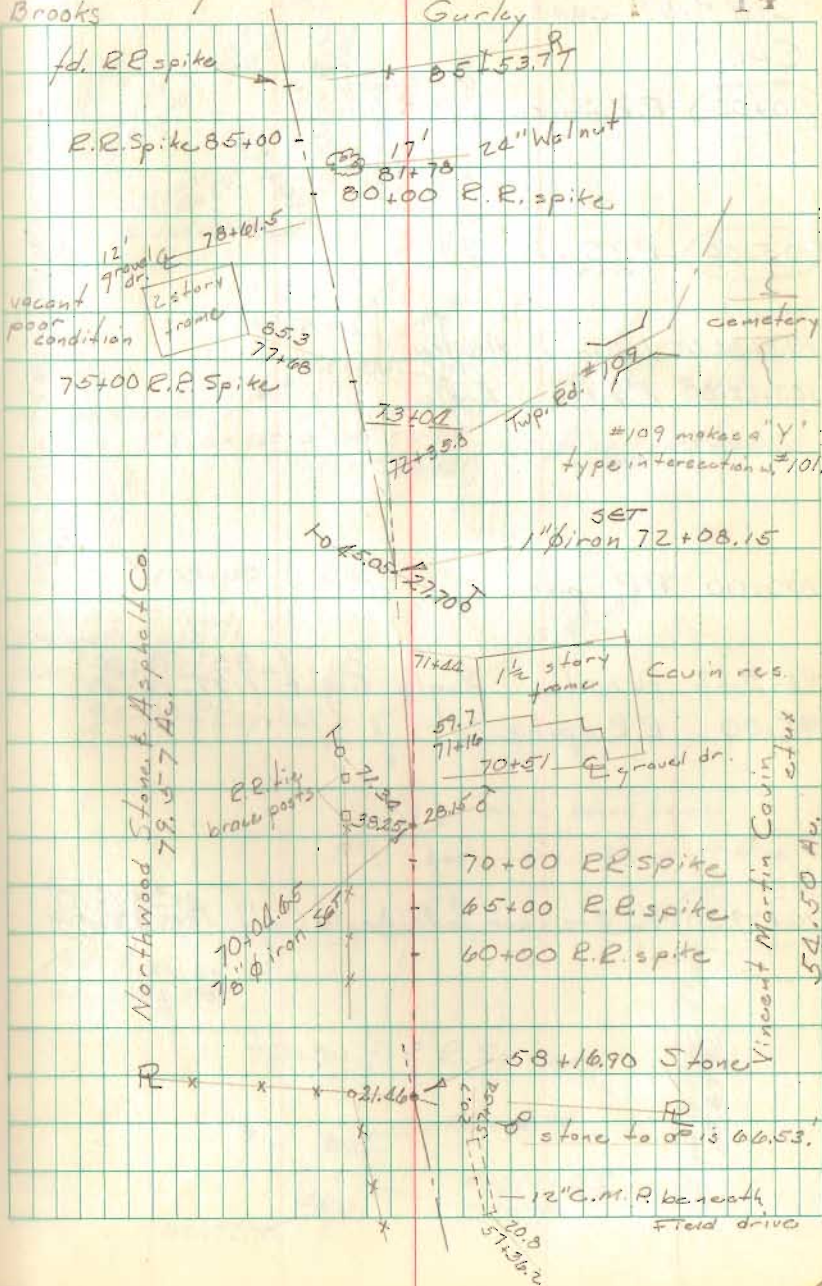
(60+00) R.R. Spike

58+16.90 Fd. stone Angle Right $1^{\circ}51'-20''$
($3^{\circ}42'-40''$)

Nichols Dodson
Beach Welty
Brooks

11 Aug. 1969
Sunny 56° @ 0700
Gurley

14



C.P. #101 cont.

Sta.

110+00 R.R. Spike

105+00 RR Spike

103+64.05 1" ϕ iron Angle

103+22.80 1" ϕ iron Angle

100+00 RR Spike

96+41.22 pk nail Angle Right $88^{\circ}58'20''$
($177^{\circ}56'40''$)

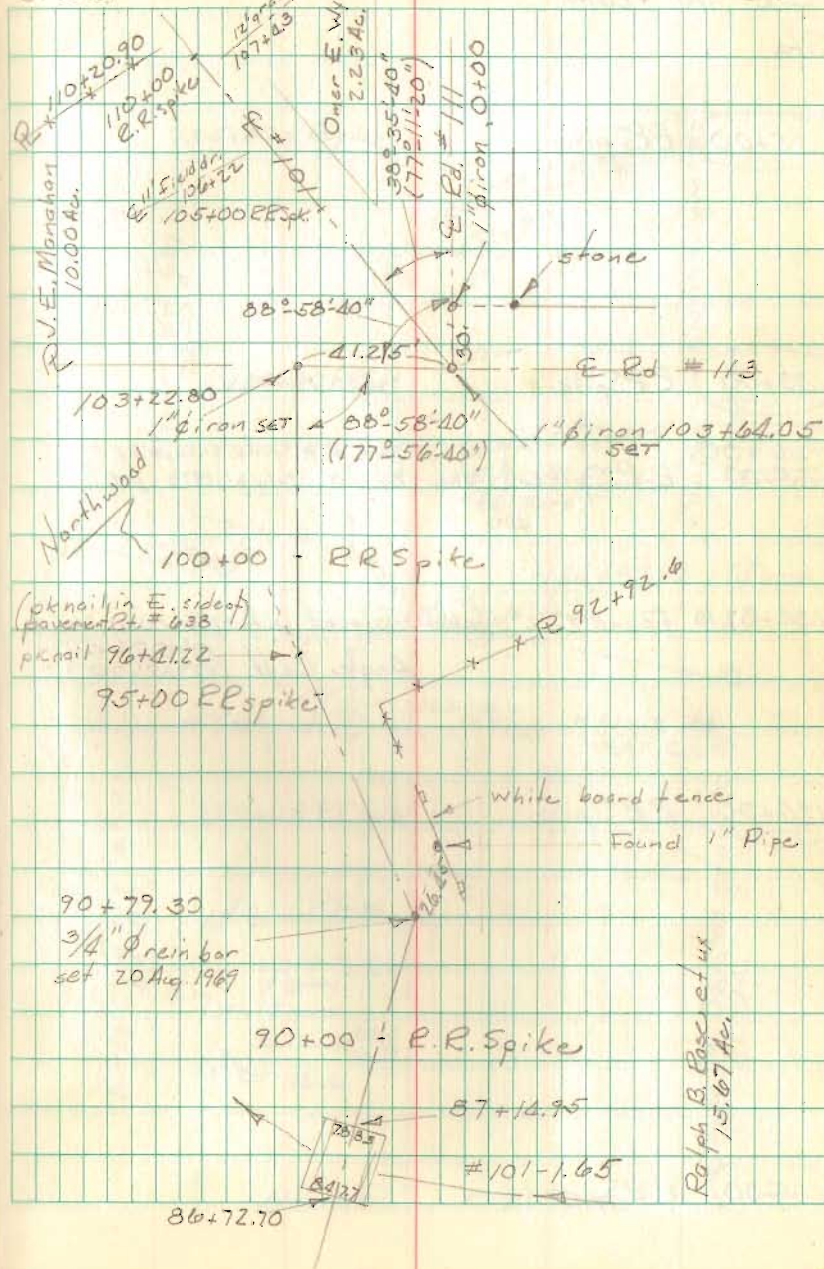
95+00 R.R. spike

90+79.30 $3/4'' \phi$ rein bar set Angle Left. $49^{\circ}51'10''$
($99^{\circ}43'00''$)

Geeslin Dodson
Nichols Henry
Brooks

18 Aug. 1969
Sunny 85°

15



C.R. #101 cont.

Sta.

(135+00) R.R. Spike

(130+00) R.R. Spike

(126+00)

~~125+00~~

R.R. Spike

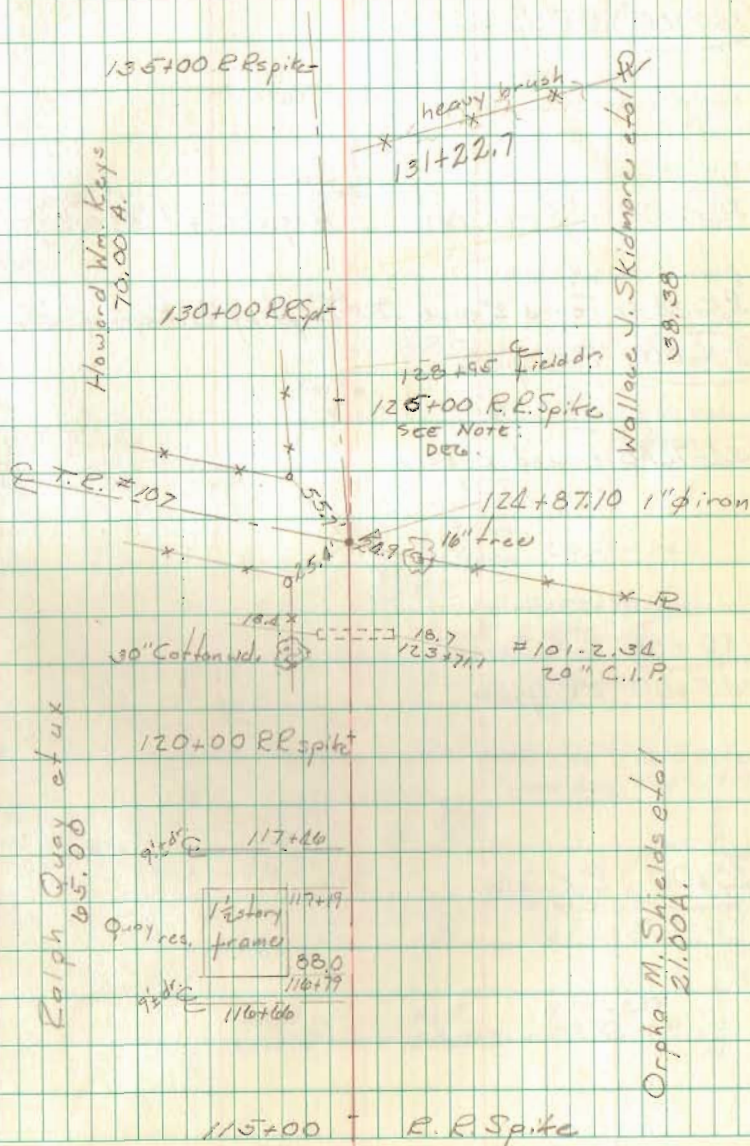
{ Note: THIS R.R. SPIKE SHOULD BE
STN. 126+00 July 21, 1973 DEW. }

124+87.10 Found 2"x2" stakes replaced with 1" iron

Angle Left (0° 07' 40"
0° 15' 00")

(120+00) R.R. Spike

(115+00) R.R. Spike



C.R. #101 cont.

Sta.

(160+00) R.R. Spike

158+51.98 1" ϕ iron set. Angle Right ($2^{\circ}30'40''$ / $5^{\circ}01'00''$)

155+34.51 Found 2" pipe, .33' Left of ϕ . Replaced with 1"

(155+00) R.R. Spike

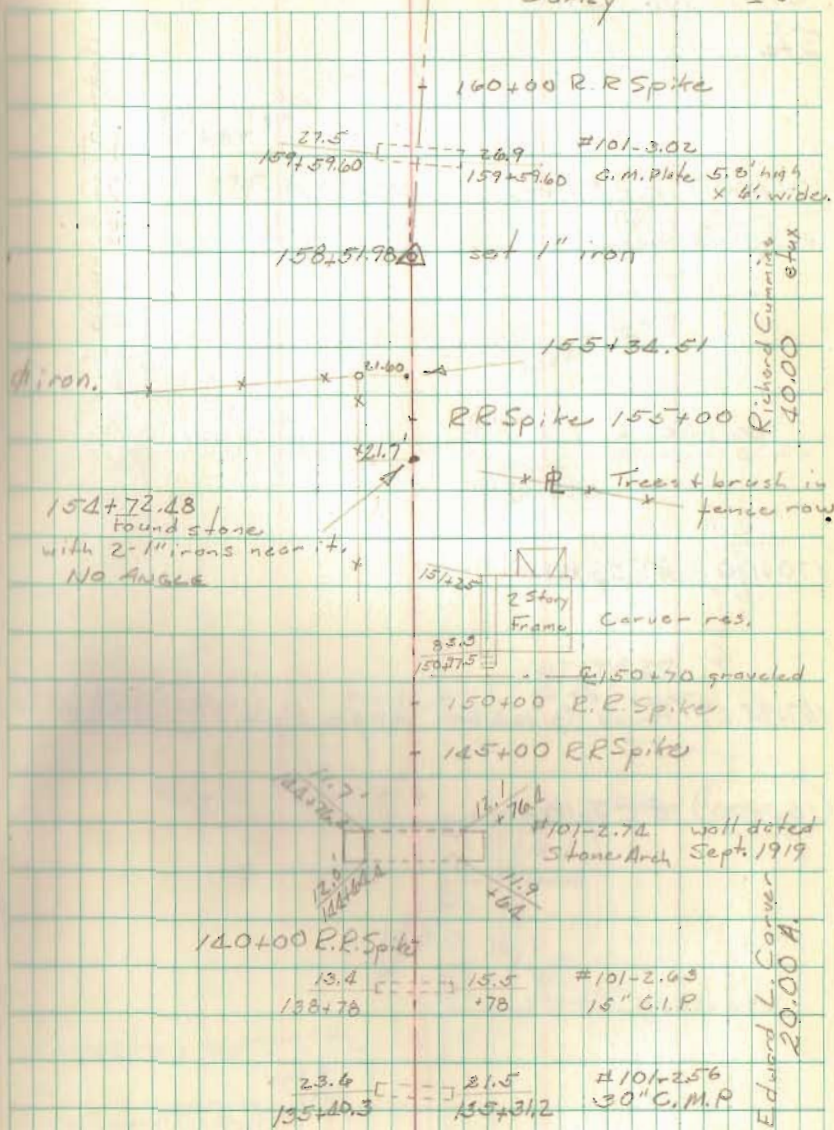
154+72.48 Found stone

(150+00) R.R. Spike

145+00 R.R. Spike

(140+00) R.R. Spike

20 Aug. 1949
Sunny - Cloudy 70°
Gurley



C.R. #101 cont.

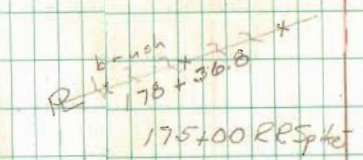
Sta.

175+00 R.R. Spike

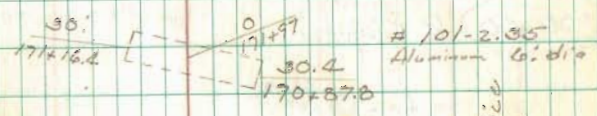
170+00 R.R. Spike

167+95.27 Found 5/8" rein. bar Angle Eight (0° 02' - 20" / 0° 05' - 20")

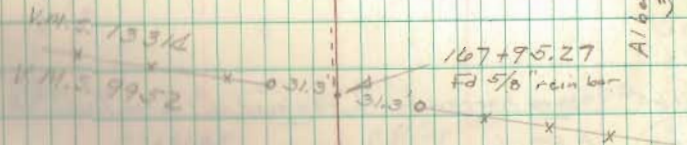
165+00 R.R. Spike



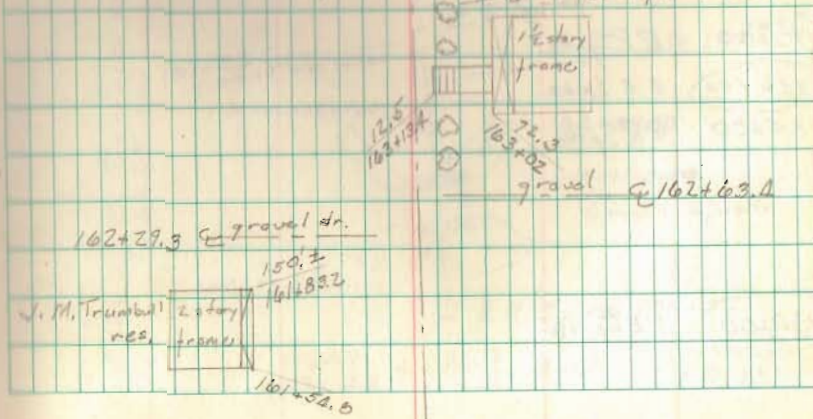
Donald E. Bradford
51.90



170+00 R.R. Spike
Albert L. Rice
35.00 ft



165+00 R.R. Spike



C.P. #101 cont.

Sta.

205+00 RR Spike

200+00 R.R. Spike

197+21.65 Found narrow tooth, replaced w. 1" Iron Angle $\frac{R}{10^{\circ}-01'-20''}$ $\frac{L}{10^{\circ}-02'-40''}$

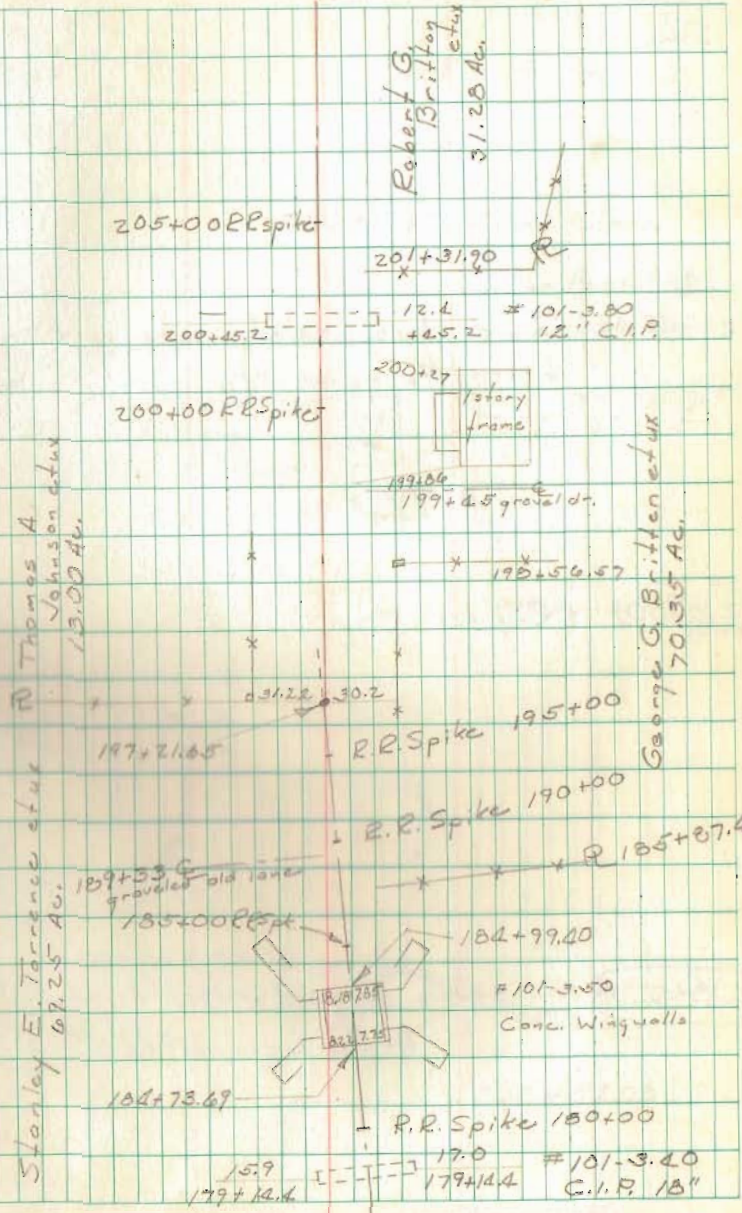
195+00 R.R. Spike

190+00 R.R. Spike

186+00 R.R. Spike

185+00 R.R. Spike

180+00 R.R. Spike



Robert G. Britton et ux
31.28 Ac.

205+00 RR Spike

201+31.90

200+45.2 --- 12.4 --- 45.2 --- #101-3.80
12" C.I.P.

200+27

200+00 RR Spike



199+06
199+45 gravel dt.

Thomas A. Johnson et ux
13.00 Ac.

197+21.65

195+00 R.R. Spike

George G. Britten et ux
70.35 Ac.

190+00 R.R. Spike

185+07.4

184+99.00
184+73.69



#101-3.50
Conc. Wing walls

180+00 R.R. Spike

179+14.4 --- 15.9 --- 17.0 --- #101-3.40
C.I.P. 18"

Stanley E. Torrence et ux
67.25 Ac.

C.R. #101 cont.
Sto.

211+42.64 Found stone, point where road 101
intersects road 51.

210+00 RR Spike

208+52.08 Found stone replaced with 1" iron.
Angle Left $41^{\circ}41'40''/83^{\circ}29'49''$

- Set R/W monuments Sept. 1970

21 Aug. 1969
Sunny 75°
20" Gurley

20

