

KELLER SURVEY

December 30, 1972

The following described real estate situated in Virginia Military Survey No. 13709, Rushcreek Township, Logan County, Ohio and being more particularly described as follows:

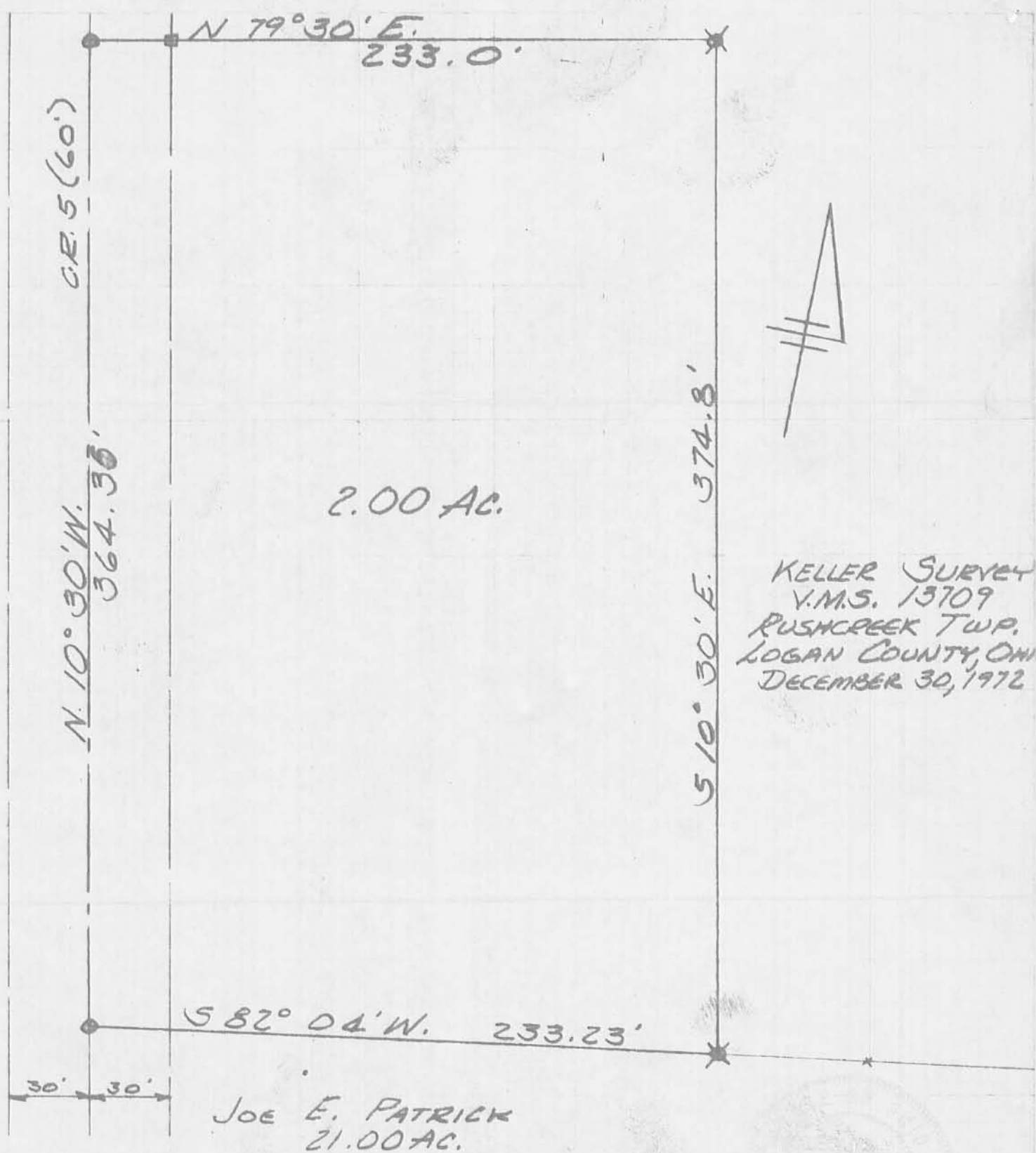
Beginning at an iron bar at the northwest corner of Joe E. Patrick's 21.00 acre tract in the centerline of County Road No. 5; thence with said centerline N.10°30'W. 364.35 feet to an iron bar; thence N.79°30'E. 233.0 feet to an iron bar; thence S.10°30'E. 374.8 feet to an iron bar in the north line of Joe E. Patrick's 21.00 acre tract; thence with said Patrick's north line S.82°04'W. 233.23 feet to the place of beginning.

Containing 2.00 acres more or less.

The above described 2.00 acre tract being in the southwest corner of Earnest W. Keller's 57.63 acre tract.

5417 ID

RECORD OF DEEDS



KELLER SURVEY
 V.M.S. 13709
 RUSHCREEK TWP.
 LOGAN COUNTY, OHIO
 DECEMBER 30, 1972

JOE E. PATRICK
 21.00 AC.

- O = R.R. SPK SET
- * = 3/4" IRON BAR SET
- = HUB SET

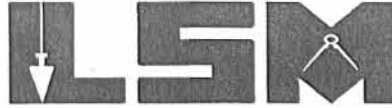
(5417) IP

INDEXED ON MAP

LESLIE H. GEESLIN
 REG. SURVEYOR 5248

REC'D 12-2-04 SMJ/OK
Lee Surveying and Mapping Co., Inc.

Land Surveys • Topography • Subdivisions • Construction Layout



117 N. Madriver St.
Bellefontaine OH 43311

Phone: (937) 593-7335
Fax: (937) 593-7444

**STRAKER
5.782 ACRES**

Lying in Virginia Military Survey 13709, Rushcreek Township, Logan County, Ohio.

Being out of the Beverly K. Straker 25.63 acre tract as deeded and described in Official Record 733, Page 778, Tract II of the Logan County Records of Deeds and being more particularly described as follows:

Beginning at a PK nail found on the south line of Virginia Military Survey 13709 on intersection of center-lines of County Highway 5 (60 feet wide) and County Highway 20 (45 feet wide).

THENCE, with the south line of Virginia Military Survey 13709 and the center-line of County Highway 20, N 83°-45'-00"E, a distance of 790.56 feet to a PK nail found.

THENCE, with the east lines of the David L. Chiles 2.150 acre tract (O.R. 535, Pg. 613) and the Matthew A. Maier 4.891 acre tract (O.R. 722, Pg. 116) and the west line of the Chad R. Straker 2.000 acre tract (O.R. 229, Pg. 689), N 10°-15'-13"W, a distance of 374.75 feet to a 5/8 inch iron rod set at the TRUE POINT OF BEGINNING.

THENCE, with the east lines of the said 4.891 acre tract and the Matthew Straker 4.893 acre tract (O.R. 573, Pg. 468), N 10°-15'-13"W, a distance of 475.69 feet to a 5/8 inch iron rod set.

THENCE, with the south bank of a creek, the following three courses:

N 57°-15'-47"E, a distance of 247.93 feet to a 5/8 inch iron rod set.

N 84°-22'-36"E, a distance of 91.28 feet to a 5/8 inch iron rod set.

S 53°-03'-24"E, a distance of 257.01 feet to a 5/8 inch iron rod set.

THENCE, S 3°-27'-02"E, a distance of 408.36 feet to a 5/8 inch iron rod set.

THENCE, with the north lines of the Alvah M. Hempy 13 acre tract (Vol. 278, Pg. 31) and the Jeffrey G. Klinger 1.287 acre tract (O.R. 359, Pg. 424), S 83°-41'-36"W, a distance of 215.61 feet to a 5/8 inch iron rod found.

THENCE, with the north line of the aforesaid 2.000 acre tract, S 83°-43'-24"W, a distance of 231.79 feet to the point of beginning.

Containing 5.782 acres.

The basis for bearings is the south line of Virginia Military Survey 13709, being N 83°-45'-00"E, and all other bearings are from angles and distances measured in a field survey by Lee Surveying and Mapping Co., Inc. on December 1, 2004.

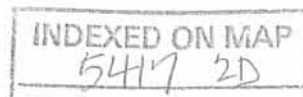


ORIGINAL STAMP IN GREEN

Description prepared by:

Jeffrey I. Lee
Professional Surveyor 6359
December 1, 2004

L-3686

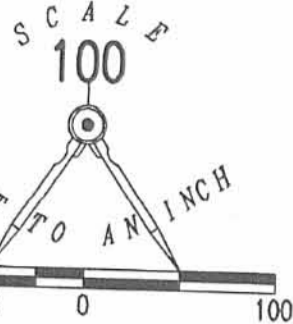


REC'D 12-2-04 SMM/OK

LEGEND:

- 5/8 INCH IRON ROD SET
- 5/8 INCH IRON ROD FOUND
- ⊗ PK NAIL FOUND

BEVERLY K. STRAKER
25.63 ACRES
O.R. 733, PG. 778
TRACT II



MATTHEW STRAKER
4.893 ACRES
O.R. 573, PG. 468

5.782 ACRES

BEVERLY K. STRAKER
25.63 ACRES
O.R. 733, PG. 778
TRACT II

BEVERLY K. STRAKER
25.63 ACRES
O.R. 733, PG. 778
TRACT II

MATTHEW A. MAIER
4.891 ACRES
O.R. 722, PG. 116

231.79'
S 83°43'24" W

215.61'
S 83°41'36" W

CHAD R. STRAKER
2.000 ACRES
O.R. 229, PG. 689

JEFFREY G. KLINGER
1.287 ACRES
O.R. 359, PG. 424

ALVAH M. HEMPY
13 ACRES
VOL. 278, PG. 31

DAVID L. CHILES
2.150 ACRES
O.R. 535, PG. 613

COUNTY HIGHWAY 5 (60')

COUNTY HIGHWAY 20 (45')

VIRGINIA MILITARY SURVEY 13709
790.56'
N 83°45'00" E
(BASIS FOR BEARINGS)
VIRGINIA MILITARY SURVEY 9888

SURVEY OF 5.782 ACRES OUT OF THE
BEVERLY K. STRAKER
25.63 ACRE TRACT
OFFICIAL RECORD 733, PAGE 778
TRACT II
VIRGINIA MILITARY SURVEY 13709
RUSHCREEK TOWNSHIP
LOGAN COUNTY, OHIO

SURVEYED BY:

INDEXED ON MAP
5417 2P



[Signature]
JEFFREY I. LEE
PROFESSIONAL SURVEYOR 6359
DECEMBER 1, 2004

COPYRIGHT 2004 BY:
LEE SURVEYING & MAPPING CO., INC.
117 North Madriver Street
BELLEFONTAINE, OHIO 43311
(937) 593-7335

KSR D413 3686114 L-3686-3

2 WORKING DAYS
BEFORE YOU DIG
CALL TOLL FREE **800-362-2764**
OHIO UTILITIES PROTECTION SERVICE

ORIGINAL STAMP IN GREEN

REC'D 4-24-95 8:44 PM ✓

LESLIE H. GEESLIN
REGISTERED SURVEYOR 5248
P. O. BOX 274
RUSHSVLVANIA, OHIO 43347
TELEPHONE: (513) 468-2793

STRAKER SURVEY

April 24, 1995

The following described real estate situated in the State of Ohio, County of Logan, Township of Rushcreek, being part of Virginia Military Survey 13709 and more particularly described as follows:

Beginning at a 8 inch wood post found in the north line of Joe E. Patrick's 21.00 ace tract as described in O. R. Vol. 223 Page 621 at the southeast corner of Grace A. Williams' 2.00 acre tract as described in D. B. Vol. 393 Page 728, said wood post being N. 82° 04' 00" E. 233.23 feet from a R. R. spike found in the centerline of County Highway 5 at said Patrick's northwest corner.

Thence with said Williams' east line N. 10° 30' 00" W. 150.00 feet to a 5/8 inch iron bar set.

Thence N. 82° 04' 00" E. 266.77 feet to a 5/8 inch iron bar set.

Thence S. 10° 30' 00" E. 150.00 feet to a 5/8 inch iron bar set in said Patrick's north line.

Thence with said Patrick's north line S. 82° 04' 00" W. 266.77 feet to the place of beginning.

Containing 0.918 acres more or less.

The above described 0.918 acre tract being part of Robert Straker's 59.53 acre tract as described in D. B. Vol. 345 Page 15.

Bearings are based on an assumed bearing (N. 10° 30' 00" W.) for the west line of Robert Straker's 59.53 acre tract in this field survey by Leslie H. Geeslin, Reg. Surveyor 5248 on April 24, 1995.

RU A:\23\STRAKER2.SAM

INDEXED ON MAP
 5417 3D-1



Leslie H. Geeslin

LESLIE H. GEESLIN
REGISTERED SURVEYOR 5248
P. O. BOX 274
RUSHSYLVANIA, OHIO 43347
TELEPHONE: (513) 468-2793

STRAKER SURVEY

April 24, 1995

The following described real estate situated in the State of Ohio, County of Logan, Township of Rushcreek, being part of Virginia Military Survey 13709 and more particularly described as follows:

Beginning at a R. R. spike found in the centerline of County Highway 5 at the northwest corner of Joe E. Patrick' 21.00 acre tract as described in D. B. Vol. 223 Page 621.

Thence with the centerline of said C. H. 5 N. 10° 30' 00" W. 150.00 feet to a cap and nail set.

Thence N. 82° 04' 00" E. 233.23 feet to a 5/8 inch iron bar set in the west line of Robert Straker's 59.53 acre tract as described in D. B. Vol. 345 Page 15.

Thence with said Straker's west line S. 10° 30' 00" E. 150.00 feet to a 8 inch wood post found in the north line of Joe E. Patrick's 21.00 acre tract as described in O. R. Vol. 223 Page 621.

Thence with said Patrick's north line S. 82° 04' 00" W. 233.23 feet to the place of beginning.

Containing 0.802 acre more or less of which 0.103 acre is in the right of way of County Highway 5.

The above described 0.802 acre tract being part of Grace Williams' 2.00 acre tract as described in D. B. Vol. 393 Page 728.

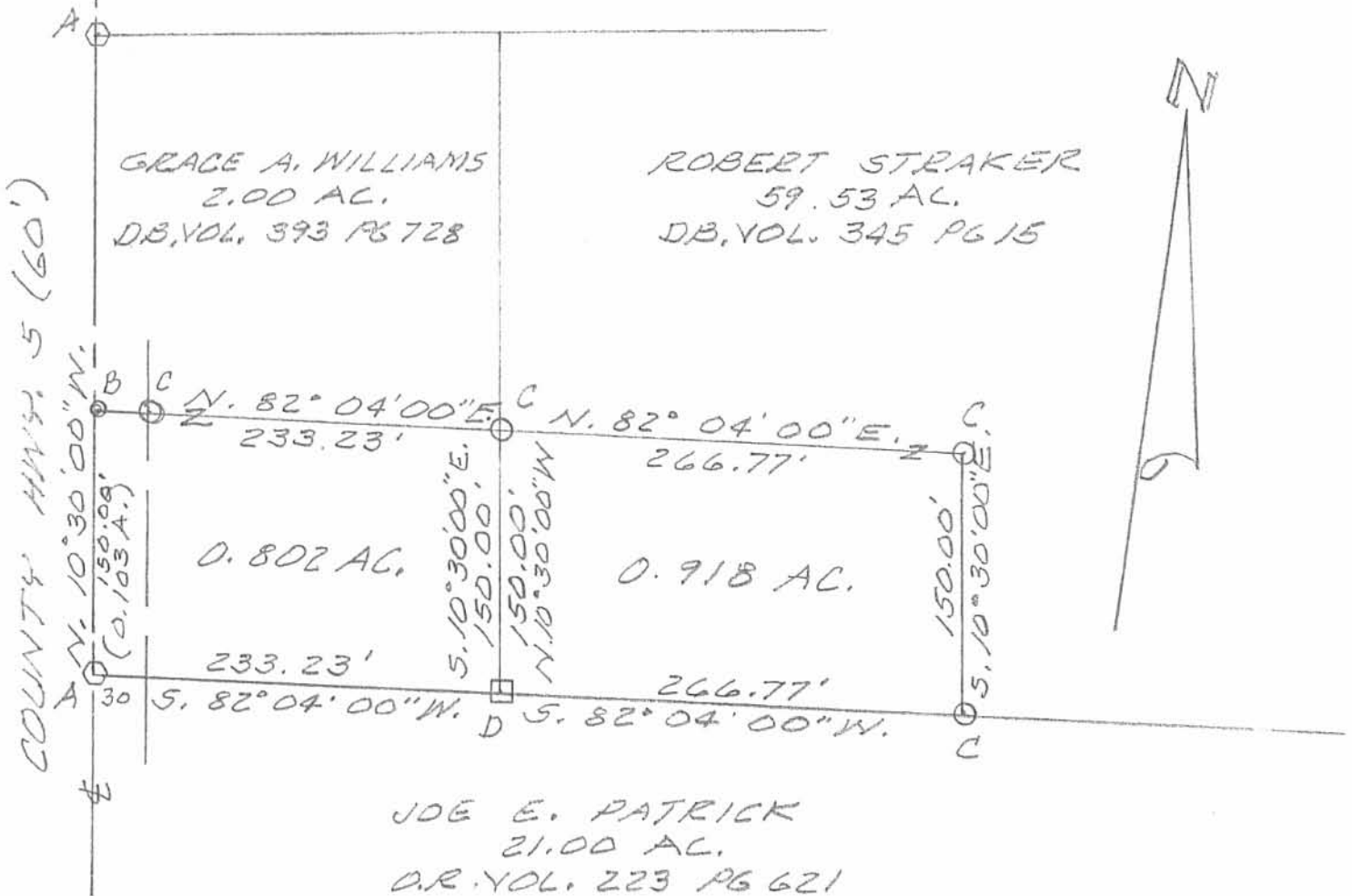
Bearings are based on an assumed bearing (N. 10° 30' 00" W.) for the centerline of County Highway 5 in this field survey by Leslie H. Geeslin, Reg. Surveyor 5248 on April 24, 1995



RU A:\23\STRAKER1.SAM

INDEXED ON MAP
5417 3D-2

Leslie H. Geeslin



SURVEY OF 0.802 AC. & 0.918 AC. TRACTS IN Y.M.S. 13709, RUSHCREEK TOWNSHIP, LOGAN COUNTY, OHIO FOR ROBERT STRAKER. APRIL 21, 1995



- LEGEND:
- A = R.R. SPIKE FD.
 - B = CAP & NAIL SET
 - C = 1/8" IRON BAR SET
 - D = 8" WOOD CORNER POST FD



INDEXED ON MAP
5417 3P

Leslie H. Geeslin
LESLIE H. GEESLIN
RUSHSVLVANIA, OHIO
PH 513-468-2793

Lee Surveying and Mapping Co., Inc.



Land Surveys • Topography • Subdivisions • Construction Layout

117 N. Madriver St.
Bellefontaine OH 43311



Phone: (937) 593-7335
Fax: (937) 593-7444
surveys@lsminc.us

STRAKER 1.576 ACRES

Lying in Virginia Military Survey 13709, Rushcreek Township, Logan County, Ohio.

Being out of the Beverly K. Straker 54.612 acre tract as deeded and described in Official Record 733, Page 778, Tract I of the Logan County Records of Deeds and being more particularly described as follows:

Commencing on a MAG nail found on the south line of Virginia Military Survey 13709 on the intersection of the center-lines of County Highway 20 and County Highway 5.

THENCE, with the center-line of County Highway 5 (60 feet wide), N 10°-00'-15"W, a distance of 1513.83 feet to a railroad spike found.

THENCE, with the north line of the Matthew W. Straker 1.198 acre tract (O.R. 745, Pg. 887), N 79°-51'-28"E, a distance of 233.00 feet to a 5/8 inch iron rod set at the TRUE POINT OF BEGINNING.

THENCE, N 86°-08'-08"E, a distance of 11.85 feet to a 5/8 inch iron rod set.

THENCE, with a curve to the right, having a central angle of 36°-53'-39", a radius of 64.25 feet, an arc length of 41.37 feet, a chord bearing S 70°-41'-38"E, a distance of 40.66 feet to a 5/8 inch iron rod set.

THENCE, with a curve to the right, having a central angle of 36°-53'-44", a radius of 64.25 feet, an arc length of 41.37 feet, a chord bearing S 33°-47'-57"E, a distance of 40.66 feet to a 5/8 inch iron rod set.

THENCE, S 19°-27'-23"E, a distance of 90.84 feet to a 5/8 inch iron rod set.

THENCE, with a curve to the left, having a central angle of 37°-01'-31", a radius of 82.87 feet, an arc length of 53.55 feet, a chord bearing S 51°-32'-57"E, a distance of 52.63 feet to a 5/8 inch iron rod set.

THENCE, with a curve to the left, having a central angle of 37°-01'-29", a radius of 82.87 feet, an arc length of 53.55 feet, a chord bearing S 88°-34'-27"E, a distance of 52.63 feet to a 5/8 inch iron rod set.

THENCE, N 79°-16'-34"E, a distance of 342.40 feet to a 5/8 inch iron rod set.

THENCE, S 03°-58'-34"E, a distance of 205.09 feet to a 5/8 inch iron rod set.

THENCE, with the north line of the Matthew Straker 4.895 acre tract (O.R. 531, Pg. 428), S 82°-35'-36"W, a distance of 219.58 feet to a 5/8 inch iron rod found.

THENCE, with the lines of the Matthew W. Straker 0.918 acre tract (O.R. 256, Pg. 112), the following two courses:

N 10°-01'-25"W, a distance of 150.00 feet to a 5/8 inch iron rod found.

Lee Surveying and Mapping Co., Inc.

Land Surveys • Topography • Subdivisions • Construction Layout

117 N. Madriver St.
Bellefontaine OH 43311



Phone: (937) 593-7335
Fax: (937) 593-7444
surveys@lsminc.us

S 82°-43'-11"W, a distance of 267.31 feet to a 5/8 inch iron rod found.

THENCE, with the east line of the aforementioned 1.198 acre tract,
N 09°-52'-11"W, a distance of 224.80 feet to the point of beginning.

Containing 1.576 acres.

Property is subject to any and all previous easements and rights-of-way
of record.

This parcel is to be attached to an adjoining tract of land and is not to be
used as a separate and independent parcel.

The basis for bearings is the center-line of County Highway 5, being
N 10°-00'-15"W, and all other bearings are from angles and distances
measured in a field survey by Lee Surveying and Mapping Co., Inc. on March 4,
2015.

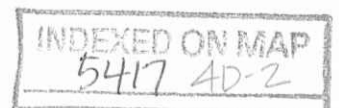


Description prepared by:

William K. Bruce

William K. Bruce
Professional Surveyor 7437
March 4, 2015

31960315



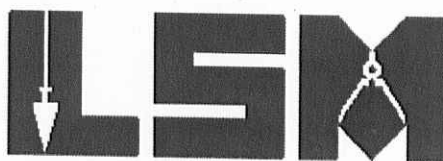
3-12-15

Lee Surveying and Mapping Co., Inc.



Land Surveys • Topography • Subdivisions • Construction Layout

117 N. Madriver St.
Bellefontaine OH 43311



Phone: (937) 593-7335
Fax: (937) 593-7444
surveys@lsminc.us

STRAKER 0.285 ACRE

Lying in Virginia Military Survey 13709, Rushcreek Township, Logan County, Ohio.

Being out of the Beverly K. Straker 54.612 acre tract as deeded and described in Official Record 733, Page 778, Tract I of the Logan County Records of Deeds and being more particularly described as follows:

Commencing on a MAG nail found on the south line of Virginia Military Survey 13709 on the intersection of the center-lines of County Highway 20 and County Highway 5.

THENCE, with the center-line of County Highway 5 (60 feet wide), N 10°-00'-15"W, a distance of 1513.83 feet to a railroad spike found.

THENCE, with the north line of the Matthew W. Straker 1.198 acre tract (O.R. 745, Pg. 887), N 79°-51'-28"E, a distance of 233.00 feet to a 5/8 inch iron rod set.

THENCE, N 86°-08'-08"E, a distance of 11.85 feet to a 5/8 inch iron rod set.

THENCE, with a curve to the right, having a central angle of 36°-53'-39", a radius of 64.25 feet, an arc length of 41.37 feet, a chord bearing S 70°-41'-38"E, a distance of 40.66 feet to a 5/8 inch iron rod set.

THENCE, with a curve to the right, having a central angle of 36°-53'-44", a radius of 64.25 feet, an arc length of 41.37 feet, a chord bearing S 33°-47'-57"E, a distance of 40.66 feet to a 5/8 inch iron rod set.

THENCE, S 19°-27'-23"E, a distance of 90.84 feet to a 5/8 inch iron rod set.

THENCE, with a curve to the left, having a central angle of 37°-01'-31", a radius of 82.87 feet, an arc length of 53.55 feet, a chord bearing S 51°-32'-57"E, a distance of 52.63 feet to a 5/8 inch iron rod set.

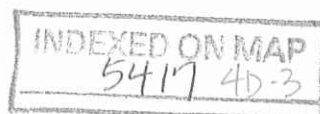
THENCE, with a curve to the left, having a central angle of 37°-01'-29", a radius of 82.87 feet, an arc length of 53.55 feet, a chord bearing S 88°-34'-27"E, a distance of 52.63 feet to a 5/8 inch iron rod set.

THENCE, N 79°-16'-34"E, a distance of 342.40 feet to a 5/8 inch iron rod set at the TRUE POINT OF BEGINNING.

THENCE, N 79°-16'-34"E, a distance of 49.57 feet to a 5/8 inch iron rod set.

THENCE, S 09°-56'-50"E, a distance of 207.80 feet to a stone found.

THENCE, with the north line of the Matthew Straker 4.895 acre tract (O.R. 531, Pg. 428), S 82°-35'-36"W, a distance of 70.97 feet to a 5/8 inch iron rod set, passing a 5/8 inch iron rod found at 0.42 feet.



Lee Surveying and Mapping Co., Inc.

Land Surveys • Topography • Subdivisions • Construction Layout

117 N. Madriver St.
Bellefontaine OH 43311



Phone: (937) 593-7335
Fax: (937) 593-7444
surveys@lsminc.us

THENCE, N 03°-58'-34"W, a distance of 205.09 feet to the point of beginning.

Containing 0.285 acre.

Property is subject to any and all previous easements and rights-of-way of record.

This parcel is to be attached to an adjoining tract of land and is not to be used as a separate and independent parcel.

The basis for bearings is the center-line of County Highway 5, being N 10°-00'-15"W, and all other bearings are from angles and distances measured in a field survey by Lee Surveying and Mapping Co., Inc. on March 4, 2015.



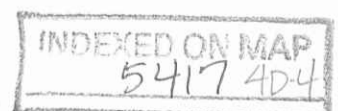
ORIGINAL STAMP IN GREEN

Description prepared by:

A handwritten signature in black ink that reads 'William K. Bruce'.

William K. Bruce
Professional Surveyor 7437
March 4, 2015

31960315

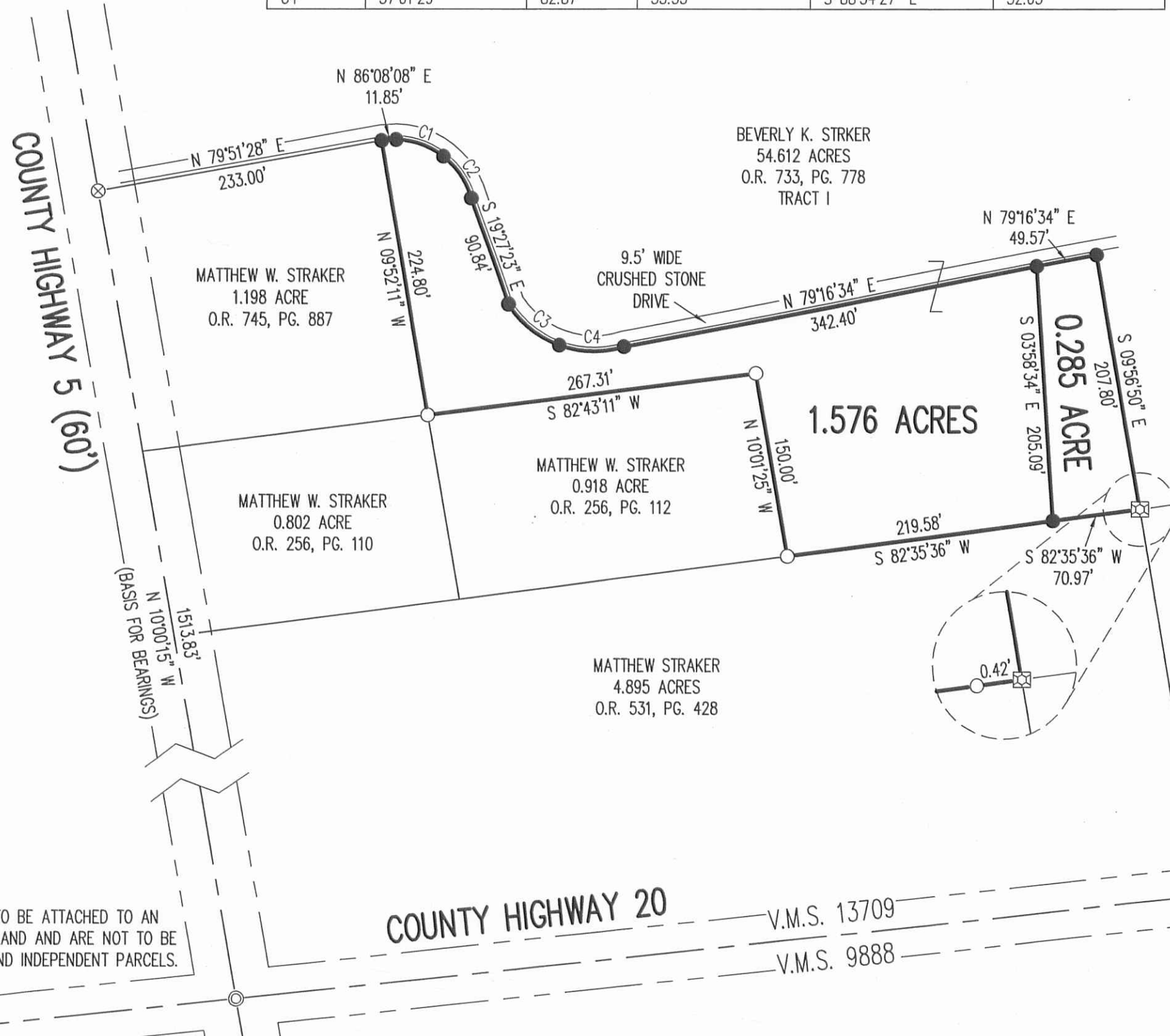
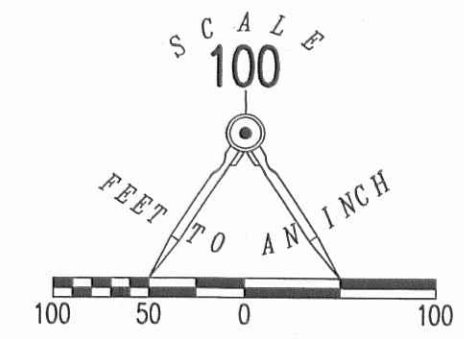


3-12-15

APPROVED

2 WORKING DAYS
BEFORE YOU DIG
CALL TOLL FREE **800-362-2764**
OHIO UTILITIES PROTECTION SERVICE.

| CURVE | DELTA ANGLE | RADIUS | ARC LENGTH | CHORD BEARING | CHORD LENGTH |
|-------|-------------|--------|------------|---------------|--------------|
| C1 | 36°53'39" | 64.25' | 41.37' | S 70°41'38" E | 40.66' |
| C2 | 36°53'44" | 64.25' | 41.37' | S 33°47'57" E | 40.66' |
| C3 | 37°01'31" | 82.87' | 53.55' | S 51°32'57" E | 52.63' |
| C4 | 37°01'29" | 82.87' | 53.55' | S 88°34'27" E | 52.63' |



**SURVEY OF TWO TRACTS OUT OF THE
BEVERLY K. STRAKER
54.612 ACRE TRACT
OFFICIAL RECORD 733, PAGE 778
TRACT I
VIRGINIA MILITARY SURVEY 13709
RUSHCREEK TOWNSHIP
LOGAN COUNTY, OHIO**

BEVERLY K. STRKER
25.63 ACRES
O.R. 733, PG. 778
TRACT II

SURVEYED BY:

William K. Bruce
WILLIAM K. BRUCE
PROFESSIONAL SURVEYOR 7437
MARCH 4, 2015



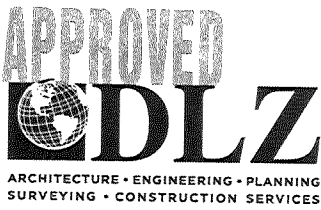
COPYRIGHT 2015 BY:
LEE SURVEYING & MAPPING CO., INC.
117 North Madriver Street
BELLEFONTAINE, OHIO 43311
(937) 593-7335
WWW.LSMINC.US
surveys@lsminc.us

KSS D0315 31960315 L-3196-3

NOTE:
THESE PARCELS ARE TO BE ATTACHED TO AN ADJOINING TRACT OF LAND AND ARE NOT TO BE USED AS SEPARATE AND INDEPENDENT PARCELS.

INDEXED ON MAP
5417 4P

3-22-2021



INNOVATIVE IDEAS
EXCEPTIONAL DESIGN
UNMATCHED CLIENT SERVICE

STRAKER 25.00 FEET WIDE INGRESS/EGRESS EASEMENT

Lying in Virginia Military Survey 13709, Rushcreek Township, Logan County, Ohio (all records referenced herein refer to the Logan County Records of Deeds).

Being a 25.00 feet wide ingress/egress easement through a part of the Beverly K. Straker 54.612 acre tract as deeded and described in Official Record 733, Page 778, Tract I, and being more particularly described as follows:

COMMENCING at the intersection of the center-lines of County Highway 20 and County Highway 5 (60 feet wide) and also being on the common line to said Virginia Military Survey 13709 and Virginia Military Survey 9888;

THENCE, with the center-line of said County Highway 5, N 10°-00'-15" W, a distance of 1513.83 feet to a point at the **TRUE POINT OF BEGINNING**, being a westerly corner common to said 54.612 acre tract and the Matthew W. Straker 1.198 acre tract as deeded and described in Official Record 745, Page 887;

THENCE, with said center-line, N 10°-00'-15" W, a distance of **25.00 feet** to a point;

THENCE, with the lines of said 25.00 feet wide ingress/egress easement and through said 54.612 acre tract, the following seven (7) courses:

1. N 79°-51'-28" E, a distance of **234.31 feet** to a point;
2. N 86°-08'-08" E, a distance of **14.20 feet** to a point of curvature;
3. With a curve to the right, having a delta angle of 73°-53'-04", a radius of 89.25 feet, an arc length of 115.09 feet, and a chord bearing S 52°-53'-55" E, a distance of **107.28 feet** to a point of tangency;
4. S 19°-27'-23" E, a distance of **86.74 feet** to a point of curvature;
5. With a curve to the left, having a delta angle of 57°-23'-14", a radius of 57.87 feet, an arc length of 57.96 feet, and a chord bearing S 64°-24'-52" E, a distance of **55.57 feet** to a point of tangency;
6. N 79°-16'-34" E, a distance of **408.83 feet** to a point; and
7. S 10°-43'-26" E, a distance of **25.00 feet** to a point at a corner common to the remainder of said 54.612 acre tract and the Beverly K. Straker 0.285 acre tract as deeded and described in Official Record 1198, Page 450;

THENCE, with the common line to said remainder of 54.612 acre tract and said 0.285 acre tract, S 79°-16'-34" W, a distance of **49.57 feet** to a point at the northeast corner of the Matthew W. Straker 1.576 acre tract as deeded and described in Official Record 1198, Page 448;

THENCE, with lines common to said remainder of 54.612 acre tract and said 1.576 acre tract, the following seven (7) courses:

1. S 79°-16'-34" W, a distance of **342.40 feet** to a point of curvature;
2. With a curve to the right, having a delta angle of 37°-01'-29", a radius of 82.87 feet, an arc length of 53.55 feet and a chord bearing N 88°-34'-27" W, a distance of **52.63 feet** to a point;



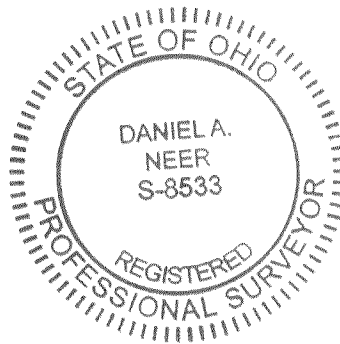
6121 Huntley Rd, Columbus, OH 43229-1003 | OFFICE 614.888.0040 | ONLINE WWW.DLZ.COM

3. With a curve to the right, having a delta angle of $37^{\circ}-01'-31''$, a radius of 82.87 feet, an arc length of 53.55 feet, and a chord bearing **N 51°-32'-57" W**, a distance of **52.63 feet** to a point of tangency;
4. **N 19°-27'-23" W**, a distance of **90.84 feet** to a point of curvature;
5. With a curve to the left, having a delta angle of $36^{\circ}-53'-44''$, a radius of 64.25 feet, an arc distance of 41.37 feet, and a chord bearing **N 33°-47'-57" W**, a distance of **40.66 feet** to a point;
6. With a curve to the left, having a delta angle of $36^{\circ}-53'-39''$, a radius of 64.25 feet, an arc length of 41.37 feet, and a chord bearing **N 70°-41'-38" W**, a distance of **40.66 feet** to a point of tangency; and
7. **S 79°-51'-28" W**, a distance of **233.00 feet** to the **POINT OF BEGINNING**.

Containing **0.527 acre**, more or less.

Property is subject to any and all previous easements and rights-of-way of record.

Bearings and distances, described herein, are derived from a deed bearing (Official Record 1198, Page 448) for the center-line of County Highway 5, being N $10^{\circ}-00'-15''$ W. Distances are expressed in U.S. Survey Feet.



Description prepared by:

Daniel A. Neer
Professional Surveyor No. 8533
February 8, 2021

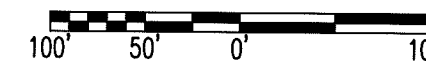
2121-2018.00

INDEXED ON MAP
5417



| LINE | BEARING | DISTANCE |
|------|---------------|----------|
| L1 | N 10°00'15" W | 25.00' |
| L2 | N 79°51'28" E | 234.31' |
| L3 | N 86°08'08" E | 14.20' |
| L4 | S 19°27'23" E | 86.74' |
| L5 | N 79°16'34" E | 408.83' |
| L6 | S 10°43'26" E | 25.00' |
| L7 | S 79°16'34" W | 49.57' |
| L8 | S 79°16'34" W | 342.40' |
| L9 | N 19°27'23" W | 90.84' |
| L10 | S 86°08'08" W | 11.85' |
| L11 | S 79°51'28" W | 233.00' |

| CURVE | DELTA ANGLE | RADIUS | ARC LENGTH | CHORD BEARING | CHORD LENGTH |
|-------|-------------|--------|------------|---------------|--------------|
| C1 | 73°53'04" | 89.25' | 115.09' | S 52°53'55" E | 107.28' |
| C2 | 57°23'14" | 57.87' | 57.96' | S 64°24'52" E | 55.57' |
| C3 | 37°01'29" | 82.87' | 53.55' | N 88°34'27" W | 52.63' |
| C4 | 37°01'31" | 82.87' | 53.55' | N 51°32'57" W | 52.63' |
| C5 | 36°53'44" | 64.25' | 41.37' | N 33°47'57" W | 40.66' |
| C6 | 36°53'39" | 64.25' | 41.37' | N 70°41'38" W | 40.66' |

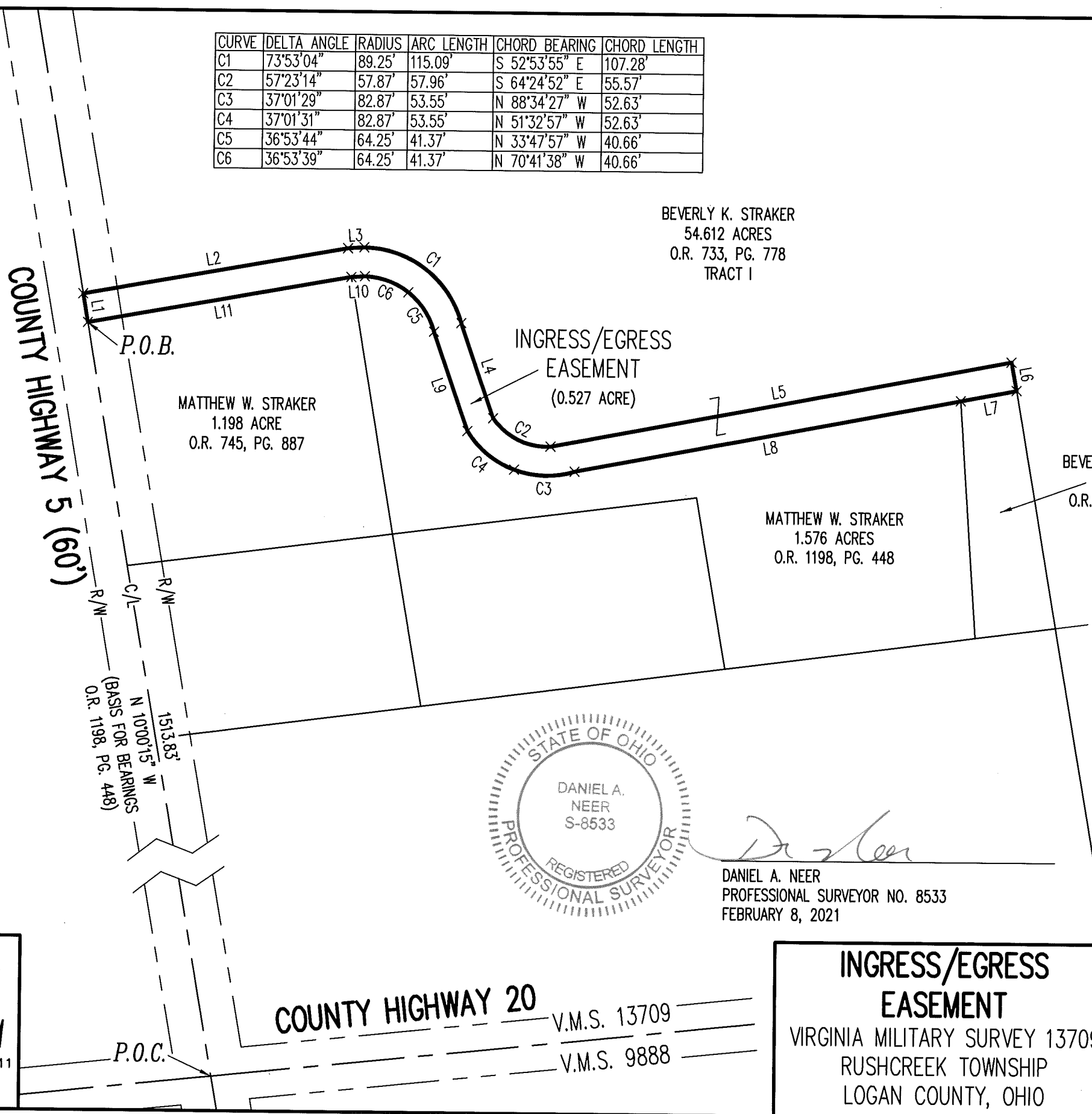


SCALE: 1" = 100'
DISTANCES SHOWN HEREON
ARE IN U.S. SURVEY FEET

- LEGEND:**
- × POINT
 - R/W = RIGHT-OF-WAY
 - C/L = CENTER-LINE
 - V.M.S. = VIRGINIA MILITARY SURVEY
 - P.O.C. = POINT OF COMMENCEMENT
 - P.O.B. = POINT OF BEGINNING
 - O.R. = OFFICIAL RECORD
 - PG. = PAGE

BASIS FOR BEARINGS:
THE BASIS FOR BEARINGS, SHOWN HEREON,
IS A DEED BEARING (O.R. 1198, PG. 448)
FOR THE CENTER-LINE OF COUNTY HIGHWAY
5, BEING N 10°00'15" W.

THIS SURVEY WAS PREPARED IN THE
ABSENCE OF A COMPLETE AND ACCURATE
TITLE SEARCH AND DOES NOT GUARANTEE
TITLE.

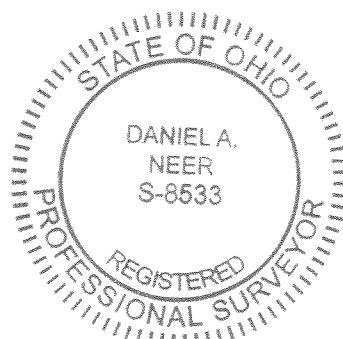


BEVERLY K. STRAKER
54.612 ACRES
O.R. 733, PG. 778
TRACT I

MATTHEW W. STRAKER
1.198 ACRE
O.R. 745, PG. 887

MATTHEW W. STRAKER
1.576 ACRES
O.R. 1198, PG. 448

BEVERLY K. STRAKER
0.285 ACRE
O.R. 1198, PG. 450



D. Neer
DANIEL A. NEER
PROFESSIONAL SURVEYOR NO. 8533
FEBRUARY 8, 2021

DEED & SURVEY REFERENCES:
REFERENCE DEEDS ARE SHOWN HEREON
LOGAN COUNTY ENGINEER'S MAP ROOM
FILES: 5417, 9375 AND 8503

THIS IS NOT A BOUNDARY SURVEY AS
DEFINED IN OHIO ADMINISTRATIVE CODE
4733-37.

COPYRIGHT 2021 BY:

117 N. Madriver Street • Bellefontaine, OH 43311
(937) 593-7335 • www.dlz.com
Project #2121-2018.00

COUNTY HIGHWAY 20
V.M.S. 13709
V.M.S. 9888

**INGRESS/EGRESS
EASEMENT**
VIRGINIA MILITARY SURVEY 13709
RUSHCREEK TOWNSHIP
LOGAN COUNTY, OHIO

| DRAWN BY: | DESCRIPTION | REV. NO. | DATE |
|-----------|--------------------|----------|-----------|
| KSS | | | 2/3/2021 |
| KSS | INCORRECT ADJOINER | 1 | 3/22/2021 |
| | | | |
| | | | |

INDEXED ON MAP
5417

7-14-2022



APPROVED



Legal Description
3.000 acres

The following described tract of land is situated in the State of Ohio, Logan County, Rushcreek Township, VMS 13709, being part of Beverly K. Straker's 54.612 acre tract described in Official Record 773, page 778, Tract I and being more particularly described as follows:

Commencing at a stone found in a monument box marking the intersection of the centerline of County Road 20 with the centerline of County Road 5 (60');

Thence North 10°01'51" West 1881.84 feet, following the centerline of County Road 5, to a MAG nail set marking a southwest corner of Matt Straker's 2.00 acre tract (O.R. 1128, page 93) and a northwest corner of said 54.612 acre tract;

Thence North 83°15'14" East 210.66 feet, following the north line of said 54.612 acre tract and the south line of said 2.00 acre tract, to an iron pin set marking the southeast corner of said 2.00 acre tract and marking the *point of beginning*;

Thence **North 10°01'51" West 416.68 feet**, following the west line of said 54.612 acre tract and the east line of said 2.00 acre tract, passing at 415.99 feet a 3/4" iron pipe found, to an iron pin set in the north line of VMS 13709 and in the south line of J. Eric Juterbock's 22.00 acre tract (O.R. 144, page 352 Tract II) and marking the northeast corner of said 2.00 acre tract;

Thence **North 83°15'14" East 314.16 feet**, following the north line of said 54.612 acre tract, the north line of VMS 13709 and the south line of said 22.00 acre tract, to an iron pin set;

Thence **South 10°01'51" East 416.68 feet**, entering said 54.612 acre tract, to an iron pin set;

Thence **South 83°15'14" West 314.16 feet**, to the *point of beginning*, containing **3.000 acres**. Subject to all valid easements and restrictions of record.

The above described 3.000 acre tract is not an individual building lot and may only be transferred to an adjoining tract with the minimum required frontage.

I, Timothy L. Guider, hereby certify that this description was prepared from an actual field survey made by me during the month of July 2022 and that monuments were set or found as indicated herein. Iron pins set are 5/8" x 30" reinforcing rods with caps marked "GUIDER S 7752". Basis of Bearing: State Plane Coordinate System, Ohio North Zone, NAD83.

Timothy L. Guider R.S. #7752
Guider Winkle Partners, Inc.
19550 Delaware County Line Rd.
Marysville, Ohio 43040
(740)666-8902



Date: 7/12/22
Job# 22173-3.000desc

INDEXED ON MAP
5417

7-14-2022



APPROVED

GW GUIDER WINKLE
PARTNERS
SURVEYING & ENGINEERING

Legal Description

2.012 acres

The following described tract of land is situated in the State of Ohio, Logan County, Rushcreek Township, VMS 13709, being all of Matt Straker's 2.00 acre tract described in Official Record 1128, page 93 and being more particularly described as follows:

Commencing at a stone found in a monument box marking the intersection of the centerline of County Road 20 with the centerline of County Road 5 (60');

Thence North 10°01'51" West 1881.84 feet, following the centerline of County Road 5, to a MAG nail set marking the southwest corner of said 2.00 acre tract and the marking the **point of beginning**;

Thence **North 10°01'51" West 416.68 feet**, following the centerline of County Road 5 and the west line of said 2.00 acre tract, to a large survey nail found in the north line of VMS 13709 and marking the southwest corner of J. Eric Juterbock's 22.00 acre tract (O.R. 144, page 352 Tract II);

Thence **North 83°15'14" East 210.66 feet**, following the north line of said 2.00 acre tract, the north line of VMS 13709 and the south line of said 22.00 acre tract, passing at 36.00 feet an iron pin set, to an iron pin set marking a northwest corner of Beverly K. Straker's 54.612 acre tract (O.R. 733, page 778 Tract I);

Thence **South 10°01'51" East 416.68 feet**, following the east line of said 2.00 acre tract and the west line of said 54.612 acre tract, passing at 0.69 feet a 3/4" iron pipe found, to an iron pin set;

Thence **South 83°15'14" West 210.66 feet**, following the south line of said 2.00 acre tract and the north line of said 54.612 acre tract, passing at 174.66 feet an iron pin set, to the **point of beginning**, containing **2.012 acres**. 0.286 acres within the road right of way. Subject to all valid easements and restrictions of record.

I, Timothy L. Guider, hereby certify that this description was prepared from an actual field survey made by me during the month of July 2022 and that monuments were set or found as indicated herein. Iron pins set are 5/8" x 30" reinforcing rods with caps marked "GUIDER S 7752". Basis of Bearing: State Plane Coordinate System, Ohio North Zone, NAD83.

Timothy L. Guider

Timothy L. Guider R.S. #7752
Guider Winkle Partners, Inc.
19550 Delaware County Line Rd.
Marysville, Ohio 43040
(740)666-8902



Date: 7/12/22
Job# 22173-2.012desc

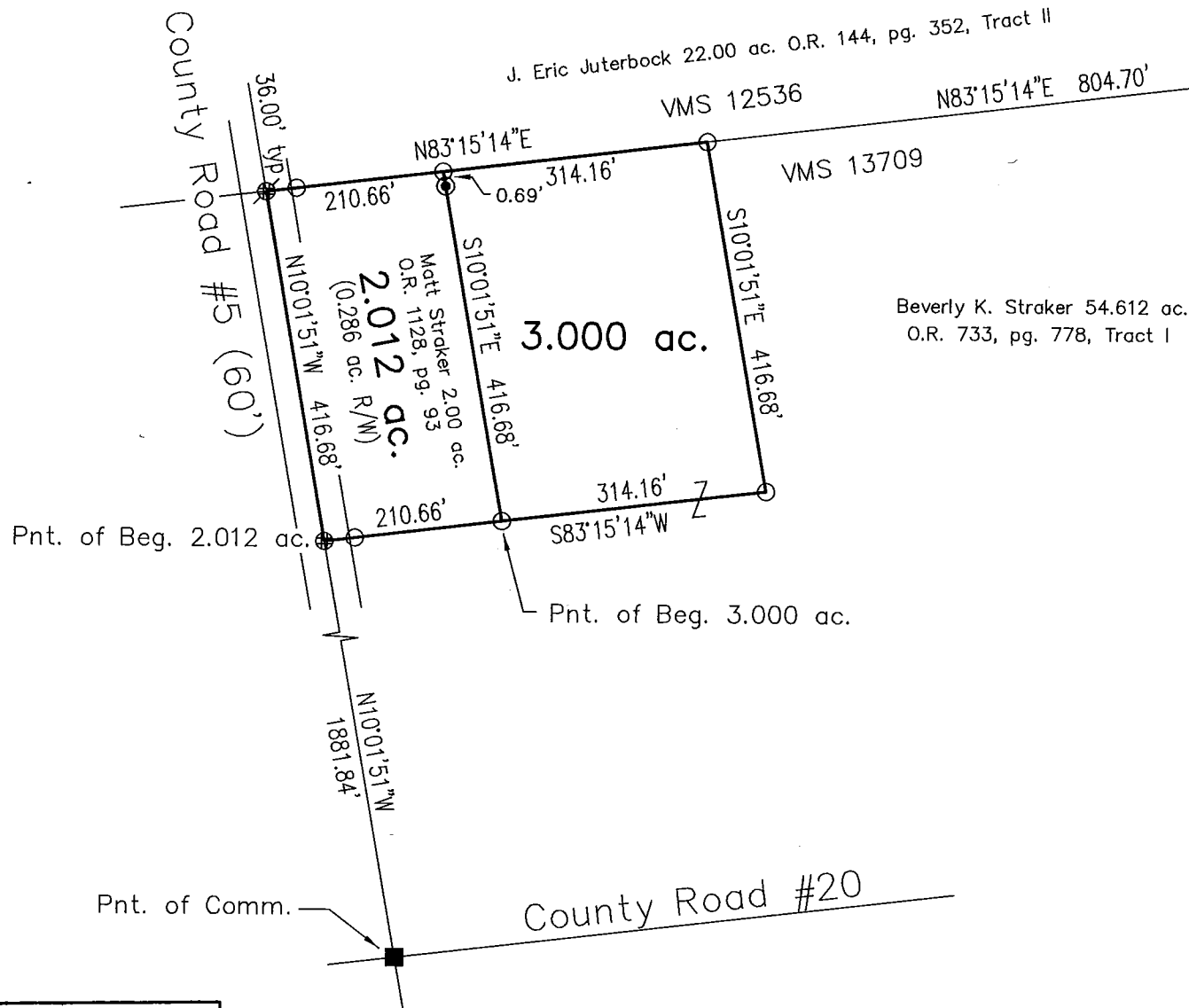
INDEXED ON MAP
5417

7-14-2022
APPROVED

Plat of Survey

Guider Winkle Partners, Inc.

State of Ohio, Logan County, Rushcreek Township, VMS 13709



Note: the 3.000 acre tract shown is not an individual building lot and may only be transferred to an adjoiner with the minimum required frontage.

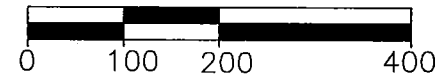
Legend

- ▲ - stone found
- ⊕ - MAG nail set
- ⊗ - Large survey nail found
- - Stone found in monument box
- - 3/4" Iron pipe found
- - 5/8" x 30" Iron pin set with cap marked "GUIDER S 7752"

Basis of Bearing

State Plane Coordinate System
Ohio North Zone, NAD83

Scale in Feet



Surveyor's Certification

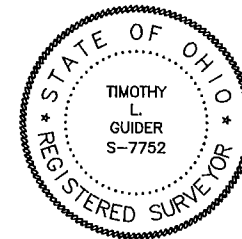
I hereby certify that this plat is an accurate representation of a field survey made by me and is correct to the best of my knowledge.

Timothy L. Guider

7/12/22

Timothy L. Guider R.S. #7752
Guider Winkle Partners, Inc.
19550 Delaware County Line Road
Marysville, Ohio 43040
(740)-666-8902

Date



INDEXED ON MAP

5417

Job#22173