

LESLIE H. GEESLIN  
REGISTERED SURVEYOR NO 5248  
P. O. BOX 274  
RUSHSVLVANIA. OHIO 43347

PHONE: (513) 468-2793

HEMPY SURVEY

October, 1978

The following described real estate situated in the State of Ohio, County of Logan, Township of Rushcreek and being part of Virginia Military Survey No. 9956 and more particularly described as follows:

Beginning at an iron bar in the east line of ConRail; thence with said east line N. 40° 09' E. 924.75 feet to a concrete post; thence with said east line N. 5° 54' E. 34.82 feet to a concrete post; thence with said east line of ConRail N. 40° 09' E. 176.40 feet to the beginning of a 2831.79 foot radius curve to the right; thence with said curve, the chord of which measures N. 40° 14' E. 244.45 feet, to a point on the projection of County Highway 12; thence with said projection and the centerline of said C. H. 12 S. 11° 50' E. 943.92 feet to a point at the northeast corner of R. Williams 0.50 acre tract, passing an iron bar at 26.69 feet; thence with said Williams' north line S. 83° 56' 20" W. 174.44 feet to a wood corner post, passing a iron bar at 0.20 feet; thence with said Williams' west line S. 11° 50' E. 126.08 feet to a point; thence S. 83° 56' 20" W. 901.95 feet to the place of beginning.

Containing 11.31 acres more or less.

The above described 11.31 acres being on the west side of Anna Brugler's 59;18 acre tract as described in D. B. Vol. 368 Pg. 419.



17-1  
6229

INDEXED ON MAP

LESLIE H. GEESLIN  
REGISTERED SURVEYOR NO. 5248  
P. O. BOX 274  
RUSHSVLVANIA, OHIO 43347

PHONE: (513) 468-2793

HEMPY SURVEY

October, 1978

The following described real estate situated in the State of Ohio, County of Logan, Township of <sup>^^</sup>ushcreek and being part of Virginia Military Survey No. 9956 and more particularly described as follows:

Beginning at a point in the east line of ConRail that is N. 11° 50' W. 26.69 feet from an iron bar at Station 112 plus 77.8 of the centerline of County Highway 12 as shown on page 37 of Field Book 640; thence with said east line of ConRail on a curve to the right having a radius of 2831.79 feet, the chord of which measures N. 45° 11' 54" E. 247.16 feet to a point on the projection of the centerline of County Highway 12; thence with said projection and centerline N. 84° 06' 27" E. 670.42 feet to an iron bar over a stone, passing an iron bar at 35.87 feet; thence with said centerline S. 70° 02' 45" E. 2030.39 feet to an iron bar; thence S. 6° 43' E. 227.14 feet to an iron bar at the northeast corner of John Kenny's 60.03 acre tract; thence with said Kenny's north line S. 83° 56' 20" W. 2592.95 feet to a point in the centerline of C. H. 12; thence with said centerline N. 11° 50' W. 969.90 feet to the place of beginning, passing an iron bar at 943.21 feet.

Containing 48.92 acres more or less.

The above described 48.92 acres being on the east side of Anna Brugler's 59.18 acre tract as described on page 419 of D. B. Vol. 368.

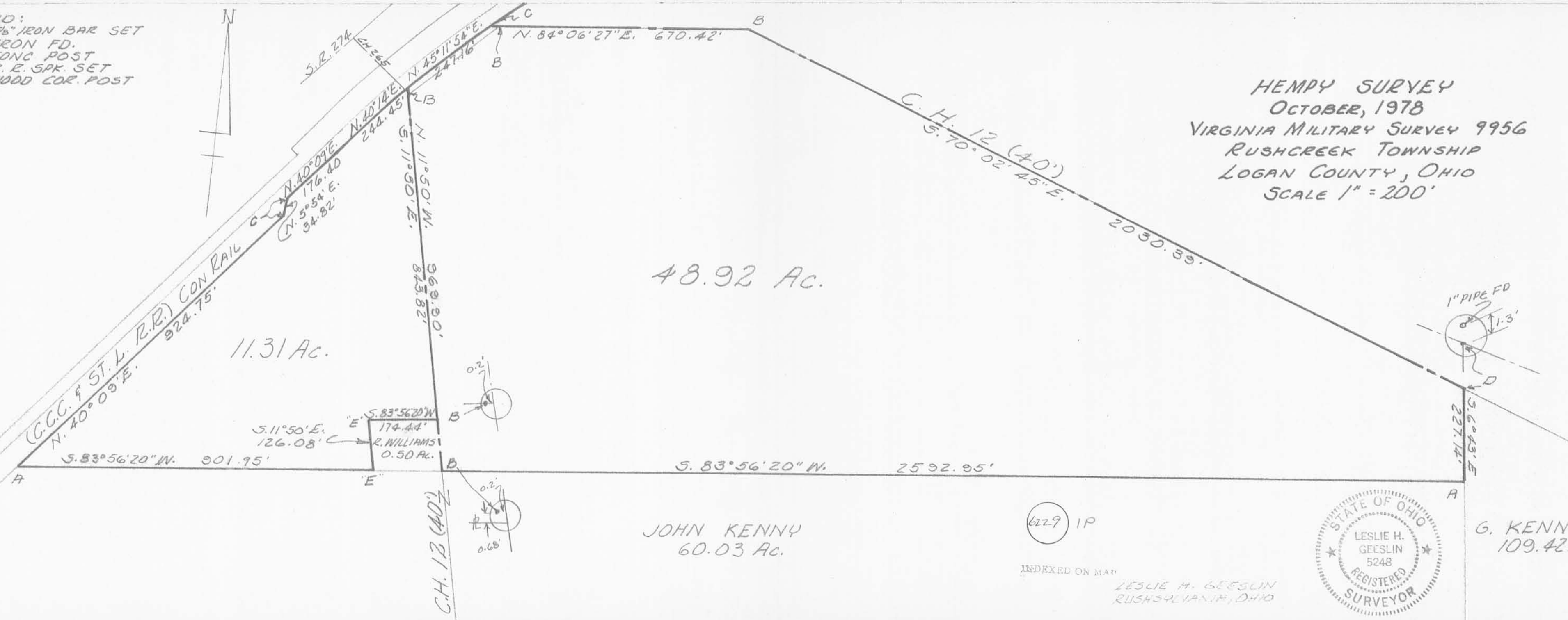


INDEXED ON MAP

LEGEND:  
 A = 9/16" IRON BAR SET  
 B = IRON FD.  
 C = CONC. POST  
 D = R. E. SPK. SET  
 E = WOOD COR. POST



HEMPY SURVEY  
 OCTOBER, 1978  
 VIRGINIA MILITARY SURVEY 9956  
 RUSHCREEK TOWNSHIP  
 LOGAN COUNTY, OHIO  
 SCALE 1" = 200'



48.92 Ac.

11.31 Ac.

JOHN KENNY  
 60.03 Ac.

G. KENNY  
 109.42 Ac.

6229 IP

INDEXED ON MAP

LESLIE H. GEESLIN  
 RUSHSVLVANIA, OHIO



12-22-15

# Lee Surveying and Mapping Co., Inc.



Land Surveys • Topography • Subdivisions • Construction Layout

117 N. Madriver St.  
Bellefontaine OH 43311



Phone: (937) 593-7335  
Fax: (937) 593-7444  
surveys@lsminc.us

## TERRILL FARMS INC. 1.268 ACRES

Lying in Virginia Military Survey 9956, Rushcreek Township, Logan County, Ohio.

Being out of the Terrill Farms Inc. 48.92 acre tract as deeded and described in Deed Volume 393, Page 429, Parcel 5 of the Logan County Records of Deeds and being more particularly described as follows:

Commencing at a railroad spike found at the intersections of center-lines of County Highway 12 (40 feet wide) and County Highway 116 at station 154+63.3 per Logan County Engineer's file R-3442.

THENCE, with the center-line of County Highway 12, N 70°-02'-45"W, a distance of 1232.50 feet to a railroad spike found at the TRUE POINT OF BEGINNING.

THENCE, with the west line of the Karen E. Goff and Thomas C. Goff 109.42 acre tract (O.R. 552, Pg. 772, tract I), S 06°-39'-53"E, a distance of 227.17 feet to a 5/8 inch iron rod found, passing a 5/8 inch iron rod set at 22.37 feet.

THENCE, with the north line of the John G. Kinney and Scarlett D. Kinney 60.03 acre tract (O.R. 1004, Pg. 564), S 83°-51'-30"W, a distance of 221.84 feet to a 5/8 inch iron rod set.

THENCE, N 01°-08'-12"E, a distance of 317.65 feet to a MAG nail set, passing a 5/8 inch iron rod set at 296.52 feet.

THENCE, with the center-line of County Highway 12, S 70°-02'-45"E, a distance of 199.90 feet to the point of beginning.

Containing 1.268 acres of which 0.093 acre is within the highway right-of-way.

Property is subject to any and all previous easements and rights-of-way of record.

The basis for bearings is the center-line of County Highway 12, being N 70°-02'-45"W, and all other bearings are from angles and distances measured in a field survey by Lee Surveying and Mapping Co., Inc. on December 15, 2015.

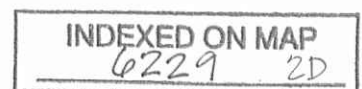
Description prepared by:

William K. Bruce  
Professional Surveyor 7437  
December 15, 2015



ORIGINAL STAMP IN GREEN

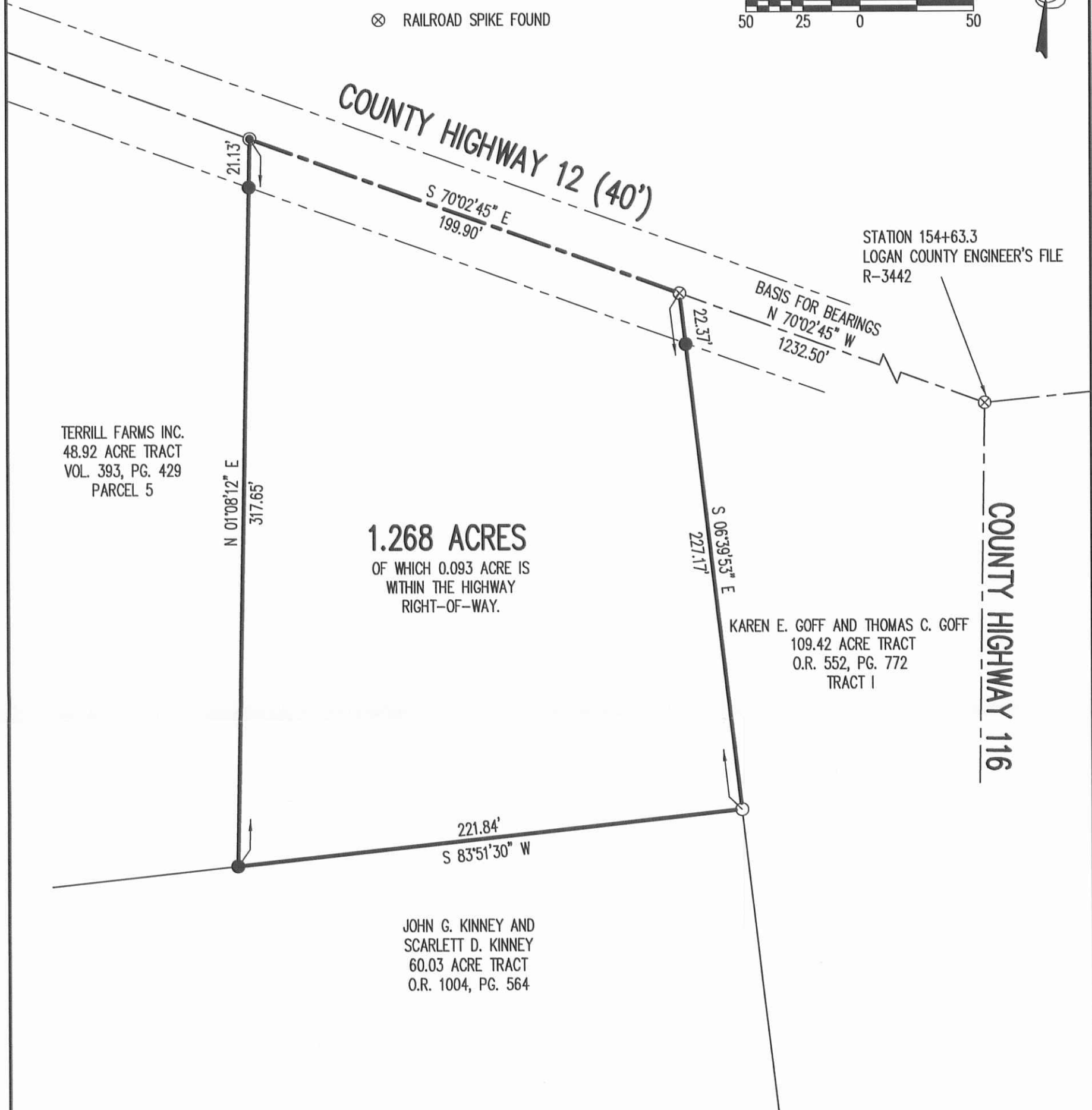
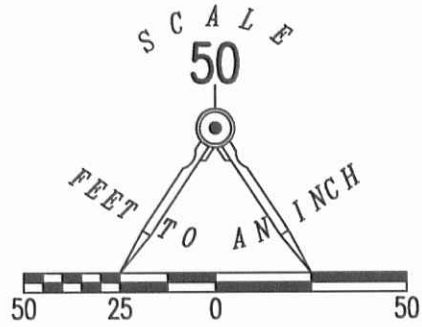
L-60351115



**APPROVED**

LEGEND

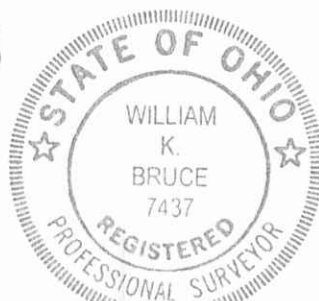
- 5/8 INCH IRON ROD SET WITH PLASTIC I.D. CAP STAMPED "LSM7437"
- 5/8 INCH IRON ROD FOUND
- ⊙ MAG NAIL SET
- ⊗ RAILROAD SPIKE FOUND



**SURVEY OF  
A 1.268 ACRE TRACT OUT OF THE  
TERRILL FARMS INC.  
48.92 ACRE TRACT  
VOLUME 393, PAGE 429  
PARCEL 5  
VIRGINIA MILITARY SURVEY 9956  
RUSHCREEK TOWNSHIP  
LOGAN COUNTY, OHIO**

SURVEYED BY:

*William K. Bruce*  
 WILLIAM K. BRUCE  
 PROFESSIONAL SURVEYOR 7437  
 DECEMBER 15, 2015



ORIGINAL STAMP IN GREEN

COPYRIGHT 2015 BY:  
**LEE SURVEYING & MAPPING CO., INC.**  
 117 North Madriver Street  
 BELLEFONTAINE, OHIO 43311  
 (937) 593-7335  
 WWW.LSMINC.US  
 surveys@lsminc.us

2 WORKING DAYS  
**BEFORE YOU DIG**  
 CALL TOLL FREE **800-362-2764**  
 OHIO UTILITIES PROTECTION SERVICE

INDEXED ON MAP  
 6229 2P