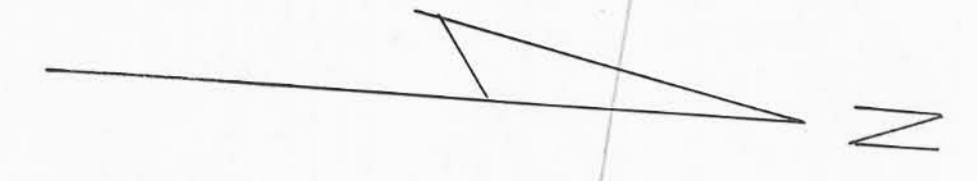


Layton Shoots

N 40°-36' W 2667.5



Steel Post
N 88°-13' E
139.0



STATE ROUTE #47
S 84° 56' W 8523

53°-57' E 1308.5

NOTE:
 I made a survey of the east side of Mountain Lake & tied it to the "Old Kitchen Line" & west property line. Co. Engr. Field Books #19, page 58, # 480, page 4 were used to re establish the "Old Kitchen Line". The Twp was scaled from County maps.
 There is a total of 68.20 acres in V.M.S. 3327; 22.40 acres of this total is in the lake.

JEFFERSON & RUSHCREEK TWPS.
 LOGAN CO., OHIO
 PETERSIME SURVEY
 OWEN K. SHIRK, SURVEYOR 4271
 BELLEFONTAINE, O. SCALE: 1"=100'

Lee Surveying and Mapping Co.



Farm Surveys • Lot Surveys • Topography • Subdivisions • Construction Layout

855 EAST SANDUSKY AVENUE
BELLEFONTAINE, OHIO 43311

(513) 593-5780

CLAYTON M. LEE, P.S.
JEFFREY I. LEE, P.S.
PAGE 1.

HOLYCROSS SURVEY OF MOUNTAIN LAKE PROPERTY

Lying in V.M.S. 3326, V.M.S. 3327 and V.M.S. 9823, Townships of Jefferson and Rushcreek, Logan County, Ohio.

Encompassing all those tracts of land as deeded and described in Volume 320, Pages 20 through 23 of the Logan County Records of Deeds and designated therein as being "Exhibit A" and "Exhibit B" and more particularly described as follows:

Beginning at a bolt set on the center-line of State Route 47 at the V.M.S. line between V.M.S. 3326 and V.M.S. 3327. This point also marking an angle point (P.I.) in said highway center-line and designated in highway records as being Station 1029+95.

THENCE, with the said center-line of State Route 47, S 66°-47' W, a distance of 1819.56 feet to a 'PK' nail set at the southeast corner of a 1.85 acre tract (Volume 327, Page 633).

THENCE, with the boundary of said 1.85 acres, the following three (3) bearings and distances:

N 18°-06' W, a distance of 276.00 feet.

S 76°-30' W, a distance of 256.50 feet.

S 13°-18' E, a distance of 323.00 feet to a 'PK' nail set on the center-line of State Route 47.

THENCE, again with said center-line, S 66°-47' W, a distance of 392.05 feet to a bolt set at an angle in said center-line at the intersection with Township Road 135 (Station 1005+00.92).

THENCE, continuing with said center-line of State Route 47, S 79°-24' W, a distance of 2250.68 feet to a bolt set at an angle in said center-line (Station 982+48.03).

THENCE, continuing with said center-line, S 79°-15' W, a distance of 139.18 feet to a bolt set at Station 981+08.85 marking the southwest corner of this survey and also being the southeast corner of the H. Miner 57.27 acres (Volume 387, Page 42).

THENCE, with the east line of said 57.72 acres, N 10°-19'-30" W, a distance of 2667.98 feet to a 2" iron pipe post found marking the northeast corner of said 57.27 acres on the north line of V.M.S. 3327, the same being the south line of V.M.S. 9823.

THENCE, with said V.M.S. line, S 81°-00' W, a distance of 56.00 feet to another 2" iron pipe post marking the southeast corner of the White River Church 132.17 acres (Volume 340, Page 878).

THENCE, with the east line of said 132.17 acres, N 9°-32'-20" W, a distance of 647.48 feet to another 2" iron pipe post.

INDEXED ON MAP

6594 10-1

Lee Surveying and Mapping Co.



Farm Surveys • Lot Surveys • Topography • Subdivisions • Construction Layout

855 EAST SANDUSKY AVENUE
BELLEFONTAINE, OHIO 43311

(513) 593-5780

CLAYTON M. LEE, P.S.
JEFFREY I. LEE, P.S.

PAGE 2.

HOLYCROSS AT MOUNTAIN LAKE PROPERTY SURVEY

THENCE, continuing with said east line, N 25°-43'-30" W, a distance of 848.14 feet to another 2" iron pipe post found marking the northwest corner of this survey and being the southwest corner of the Kent Hammond 24.21 acre tract (Volume 351, Page 715).

THENCE, with the south line of the said 24.21 acres, N 81°-44'-30" E, a distance of 742.12 feet to an iron rod set on the west line of the Forest Watkins 51.27 acre tract (Volume 325, Page 62).

THENCE, with the west line of said 51.27 acres, S 24°-56'-40" E, a distance of 1508.19 feet to a point in Mountain Lake on the line between V.M.S. 9823 and V.M.S. 3327.

THENCE, with the north line of V.M.S. 3327, S 81°-00' E, a distance of 4313.08 feet to an 1½ inch iron pipe found on the center-line of Township Road 273 in the north line of V.M.S. 3326. This point marking the southeast corner of the R. Inskeep 40.74 acres (Volume 370, Page 368) and being the northeast corner of this survey.

THENCE, with the east line of this survey, the same being the west line of the Ogle Hunt 57.55 acres, S 12°-55'-50" E, a distance of 1995.57 feet to a bolt set on the center-line of State Route 47 at the southeast corner of this survey. (State Highway Station 1034+25.49).


THENCE, with said center-line, S 81°-30' W, a distance of 430.49 feet to the point of beginning. Containing 314.10 acres, breaking down to the following divisions:

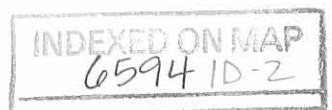
Rushcreek Township, 159.08 acres, of which 12.30 acres are in V.M.S. 3326, 121.05 acres are in V.M.S. 3327 and 25.73 acres are in V.M.S. 9823.

Jefferson Township, 155.02 acres, of which 151.07 acres are in V.M.S. 3327 and 3.95 acres are in V.M.S. 3326.

Last previous deed reference: Volume 320, Pages 20-23.

Prepared by:


Clayton M. Lee
Reg. Surveyor No. 6181
March 22, 1981



Lee Surveying and Mapping Co.



Farm Surveys • Lot Surveys • Topography • Subdivisions • Construction Layout

855 EAST SANDUSKY AVENUE
BELLEFONTAINE, OHIO 43311

(513) 593-5780

CLAYTON M. LEE, P.S.
JEFFREY I. LEE, P.S.

WEST PART OF HOLYCROSS 314.10 ACRES

Lying in V.M.S. 3327 and V.M.S. 9823, Township's of Jefferson and Rushcreek, Logan County, Ohio.

Being off the west side of those tracts of land as deeded and described in Volume 320, Pages 20 through 23 of the Logan County Records of Deeds and designated therein as being Exhibit 'A' and Exhibit 'B'. (New survey of March 1981 shows 114.10 acres). This survey of 109.10 acres being more particularly described as follows:

Beginning at a bolt set on the center-line of State Route 47 marking the southwest corner of said 114.10 acres. The same being the southeast corner of the H. Miner 57.27 acres (Volume 387, Page 42) and being Station 981+08.85 of said highway.

THENCE, with the east line of said 57.27 acres, N 10°-19'-30" W, a distance of 2667.98 feet to a 2" iron pipe post found marking the northeast corner of said 57.27 acres on the north line of V.M.S. 3327, the same being the south line of V.M.S. 9823.

THENCE, with said V.M.S. line, S 81°-00' W, a distance of 56.00 feet to another 2" pipe post marking the southeast corner of the White River Church 132.17 acres (Volume 340, Page 878).

THENCE, with the east line of said 132.17 acres, N 9°-32'-20" W, a distance of 647.48 feet to another 2" iron pipe post.

THENCE, continuing with said east line, N 25°-43'-30" W, a distance of 848.14 feet to another 2" iron pipe post found marking the northwest corner of this survey and being the southwest corner of the Kent Hammond 24.21 acre tract (Volume 351, Page 715).

THENCE, with the south line of the said 24.21 acres, N 81°-44'-30" E, a distance of 742.12 feet to an iron rod set on the west line of the Forest Watkins 51.27 acre tract (Volume 325, Page 62).

THENCE, with the west line of said 51.27 acres, S 24°-56'-40" E, a distance of 1508.19 feet to a point in Mountain Lake on the line between V.M.S. 9823 and V.M.S. 3327.

THENCE, with the north line of V.M.S. 3327, S 81°-00' E, a distance of 520.65 feet to an iron rod set for the northeast corner of this survey. Passing an iron rod set for reference at 284.01 feet.

THENCE, parallel to the west line, S 10°-19'-30" E, a distance of 2629.34 feet to an iron bolt set on the center-line of State Route 47.

THENCE, with the said center-line, S 79°-24' W, a distance of 1231.32 feet to a bolt.

THENCE, continuing with said center-line, S 79°-15' W, a distance of 139.18 feet to the point of beginning. Containing 109.10 acres of which 60.367 acres are in V.M.S. 3327, Jefferson Township, 23.0 acres are in V.M.S. 3327, Rushcreek Township and 25.733 acres are in V.M.S. 9823, Rushcreek Township.

Last previous deed reference: Volume _____, Page _____.

Prepared by: Clayton M. Lee
Clayton M. Lee, Reg Surveyor 6181

INDEXED ON MAP
6594 1D-3

WHITE RIVER CHURCH
132.17 AC. Vol. 349, Pg. 878

MARIT HAMMOND
171.17 AC. Vol. 351, Pg. 715

FORREST WATKINS
Vol. 325, Pg. 62

R. INSKEET 40.74 AC.
Vol. 370, Pg. 368



SCALE ~ 1" = 400'

51.27 AC.

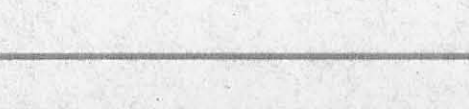
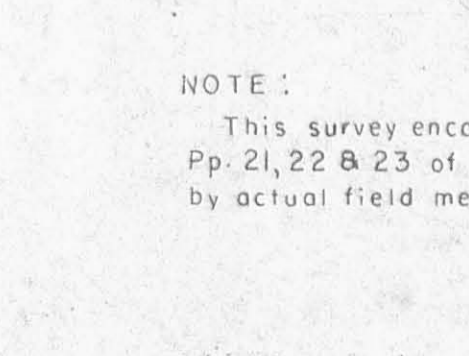
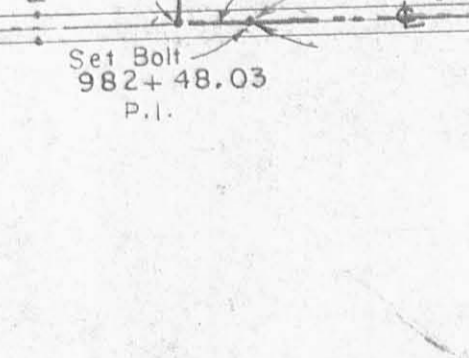
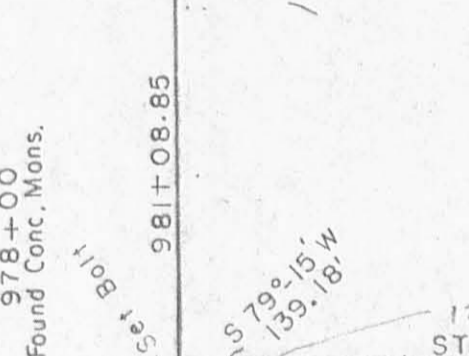
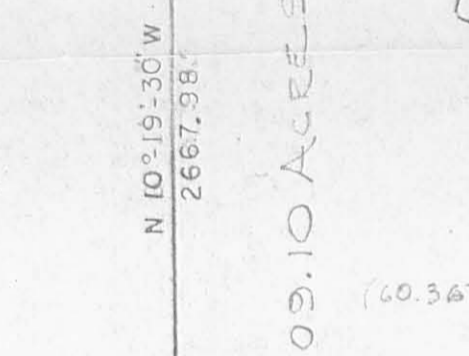
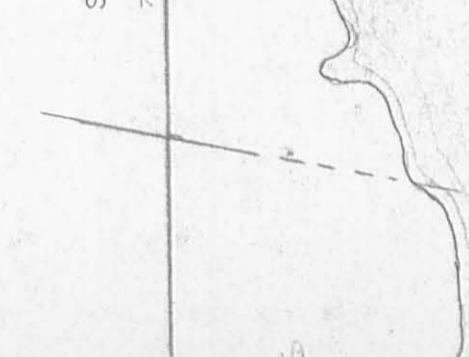
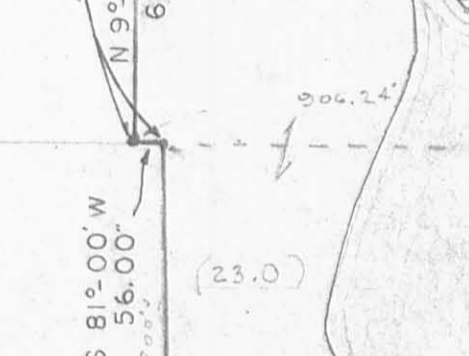
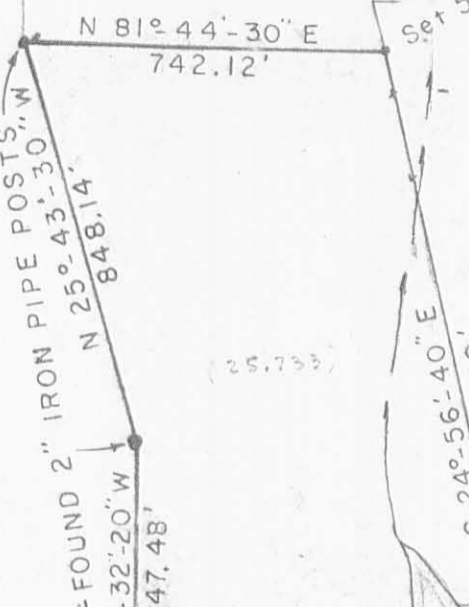
73 AC.

J.W. EASTON
4 AC. Vol. 376

WATKINS ALLOT.

V.M.S. 9823
V.M.S. 3323

Found 1 1/2" Iron Pipe -
Set 5/8" Rod inside pipe



MOUNTAIN LAKE

V.M.S. 3327

N 81° 00' E 4313.08'

PRIVATE DRIVE

TWP. RD. 273

ACRES
(159.00)
12 RUSHCREEK TWP.
12 V.M.S. 3327
12 V.M.S. 3326
25.73

OGLE HUNT
57.55 AC.

TOTAL = 314.10 ACRES

RUSHCREEK TWP.
JEFFERSON TWP.

ACRES
(159.00)
12 JEFFERSON TWP.
12 V.M.S. 3327
12 V.M.S. 3326
25.73

205.00 ACRES
REMAINING

NEW #
(PROPOSED)

Found Conc. Mons.
1036+100

1029+957 S 81° 30' W
430.49 Set Bolts

256.50
S 76° 30' W
1.85 AC.
Vol. 327
Pg. 633

S 66° 47' W
1819.56'

ST. HWY. STA.
978+00
Found Conc. Mons.

981+08.85

Set Bolt
982+48.03
P.I.

1231.32
STATE ROUTE 47
S 79° 24' W
2250.68'

1005+00.92
Set Bolt
S 66° 47' W
392.05'

SURVEY OF 314.10 ACRES FOR DALE HOLYCROSS Located in V.M.S. 3327 , 9823 & 3326 JEFFERSON & RUSHCREEK TWPS. LOGAN COUNTY, OHIO.

NOTE:
This survey encompasses all those Tracts described in Vol. 320,
Pg. 21, 22 & 23 of the Logan County Records of Deeds and was made
by actual field measurements and corners are monumented as shown.

Jeffrey L. Lee

6594 IP

INDEXED ON MAP



By: *Jeffrey L. Lee*

JEFFREY L. LEE
Reg. Surveyor 6359

LEE SURVEYING & MAPPING CO.
855 E. Sandusky Ave.
BELLEFONTAINE, OHIO 43311
(513) 593-5780

SCALE: 1" = 400'	APPROVED BY	DRAWN BY C. LEE
DATE: MAR, 1981		
		DRAWING NUMBER 804-2

Lee Surveying and Mapping Co.



Farm Surveys • Lot Surveys • Topography • Subdivisions • Construction Layout

855 EAST SANDUSKY AVENUE
BELLEFONTAINE, OHIO 43311

(513) 593-5780

CLAYTON M. LEE, P.S.
JEFFREY I. LEE, P.S.

CHARLES HOLYCROSS SURVEY

Lying in V.M.S. 3327, Jefferson Township, Logan County, Ohio.

Being out of that 314.10 acre tract deeded and described in Volume 392, Page 517 of the Logan County Records of Deeds and more particularly described as follows:

Beginning at a spike found on the center-line of State Route 47 marking an angle in said center-line at the intersection of County Road 135 and designated in the highway records as being Station 1005+00.92.

THENCE, with said center-line, S 83°-08'-20" W, a distance of 64.47 feet to a bolt. This point lying easterly along said center-line 2325.39 feet from the southwest corner of said 314.10 acre tract.

THENCE, N 13°-10' W, a distance of 210.00 feet to an iron rod. Passing an iron rod set at 35 feet.

THENCE, at right angles, N 76°-50' E, a distance of 207.23 feet to an iron rod.

THENCE, again at right angles and parallel to the west line of this survey, S 13°-10' E, a distance of 201.25 feet to an iron bolt set on the center-line of State Route 47.

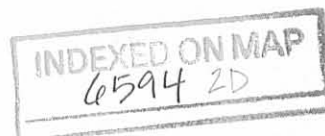
THENCE, with said center-line, S 70°-31'-20" W, a distance of 144.03 feet to the point of beginning. Containing 1.00 acre.

Last previous deed reference: Volume 392, Page 517.

Surveyed by:

Clayton M. Lee

Clayton M. Lee
Reg. Surveyor No. 6181
10-6-81



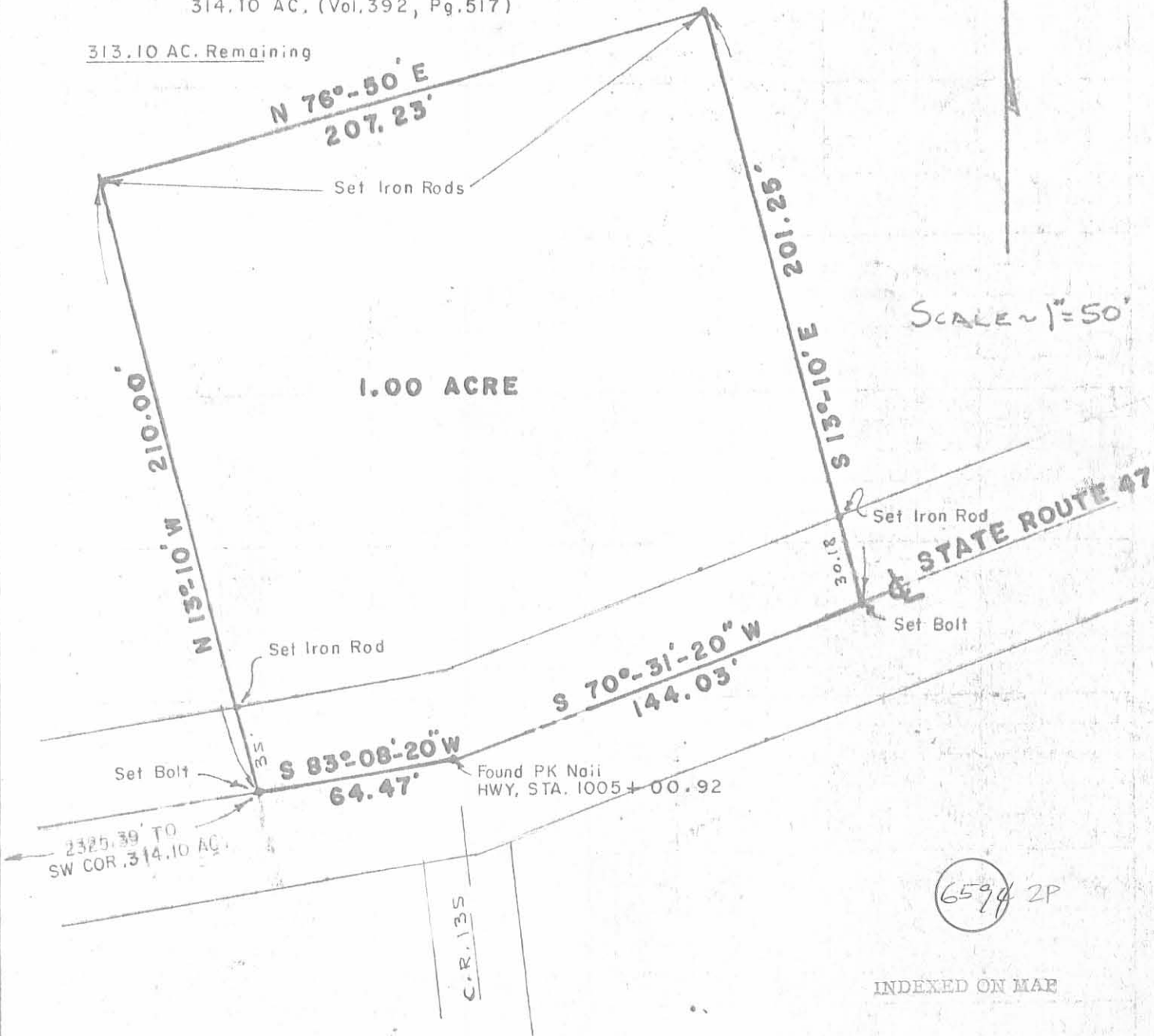
DALE HOLYCROSS
 314.10 AC. (Vol. 392, Pg. 517)

313.10 AC. Remaining

NORTH

SCALE 1" = 50'

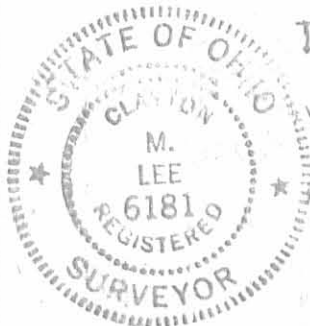
1.00 ACRE



6594 2P

INDEXED ON MAP

SURVEY OF 1.00 ACRE OUT OF THE
 DALE HOLYCROSS 314.10 AC. (VOL. 392, PG. 517)
 V.M.S. 3327, JEFFERSON TOWNSHIP,
 LOGAN COUNTY, OHIO



LEE SURVEYING & MAPPING CO.
 855 E. Sandusky Ave.
 BELLEFONTAINE, OHIO 43311
 (513) 593-5780

By Clayton M. Lee
 CLAYTON M. LEE
 REG. SURVEYOR 6181

10-6-81

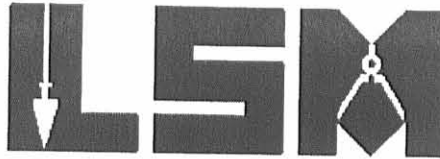
1-804-5

REC'D 8-24-07 SMY OK

Lee Surveying and Mapping Co., Inc.

Land Surveys • Topography • Subdivisions • Construction Layout

117 N. Madriver St.
Bellefontaine OH 43311



Phone: (937) 593-7335
Fax: (937) 593-7444

ENGLE 5.766 ACRES

Lying in Virginia Military Survey 3327, Rushcreek Township, Logan County, Ohio.

Being out of the Larry N. Engle and Joyce A. Engle original 198.00 acre tract as deeded and described in Official Record 146, page 435 of the Logan County Records of Deeds and being more particularly described as follows:

Commencing at a railroad spike found at the northeast corner of Virginia Military Survey 3327 within the right-of-way of Township Road 273 (50 feet wide).

THENCE, with the east line of Virginia Military Survey 3327, S 9°-31'-06"E, a distance of 749.84 feet to a 5/8 inch iron rod set, passing a 5/8 inch iron rod set at 26.51 feet.

THENCE, S 78°-22'-20"W, a distance of 368.57 feet to a 5/8 inch iron rod set.

THENCE, N 4°-02'-43"W, a distance of 769.57 feet to a railroad spike set within the right-of-way of Township Road 273, passing a 5/8 inch iron rod set at 738.93 feet.

THENCE, with the north line of Virginia Military Survey 3327, N 81°-00'-00"E, a distance of 294.93 feet to the point of beginning.

Containing 5.766 acres of which 0.194 acre is within the highway right-of-way.

The basis for bearings is the north line of Virginia Military Survey 3323, being N 81°-00'-00"E, and all other bearings are from angles and distances measured in a field survey by Lee Surveying and Mapping Co., Inc. on August 21, 2007.

Description prepared by:

William K. Bruce

William K. Bruce
Professional Surveyor 7437
August 22, 2007

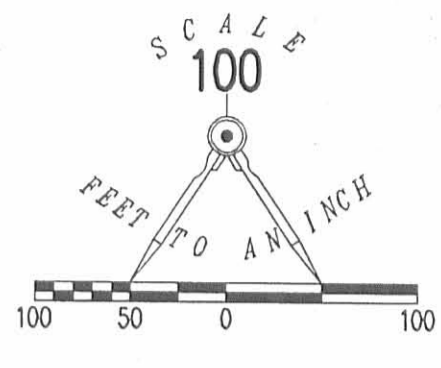
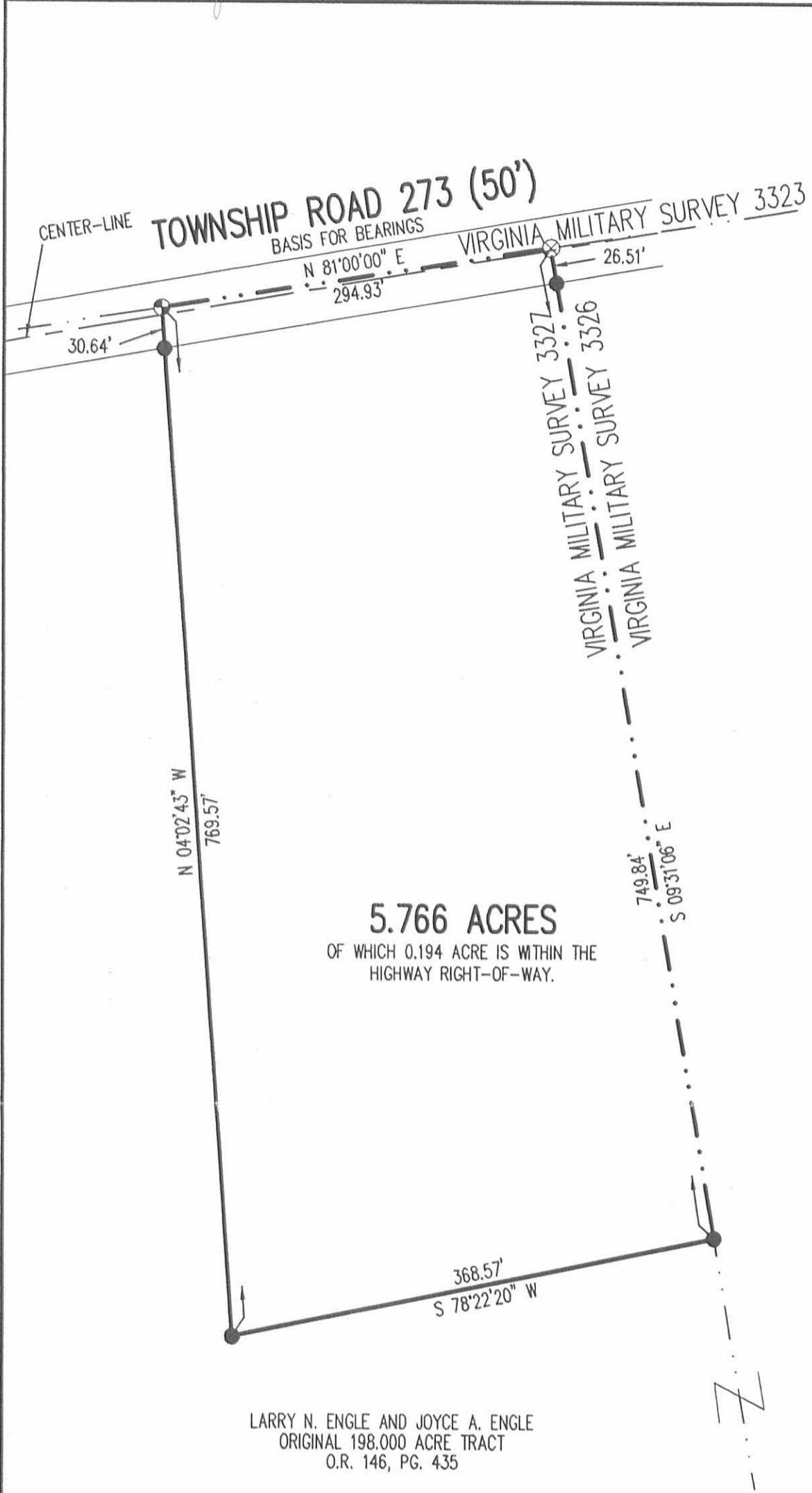


ORIGINAL STAMP IN GREEN

L-804087



REV'D 8-24-07 SURV OK



- LEGEND
- 5/8 INCH IRON ROD SET
 - ⊗ RAILROAD SPIKE FOUND
 - ⊕ RAILROAD SPIKE SET

5.766 ACRES
 OF WHICH 0.194 ACRE IS WITHIN THE
 HIGHWAY RIGHT-OF-WAY.

LARRY N. ENGLE AND JOYCE A. ENGLE
 ORIGINAL 198.000 ACRE TRACT
 O.R. 146, PG. 435

A SURVEY OF A 5.766 ACRE TRACT OUT OF THE
 LARRY N. ENGLE AND JOYCE A. ENGLE
 ORIGINAL 198.000 ACRE TRACT
 OFFICIAL RECORD 146, PAGE 435
 VIRGINIA MILITARY SURVEY 3327
 RUSHCREEK TOWNSHIP
 LOGAN COUNTY, OHIO



ORIGINAL STAMP IN GREEN

SURVEYED BY:
William K. Bruce
 WILLIAM K. BRUCE
 PROFESSIONAL SURVEYOR 7437
 AUGUST 21, 2007

COPYRIGHT 2007 BY:
LEE SURVEYING & MAPPING CO., INC.
 117 North Madriver Street
 BELLEFONTAINE, OHIO 43311
 (937) 593-7335

INDEXED ON MAP
 6594 3P

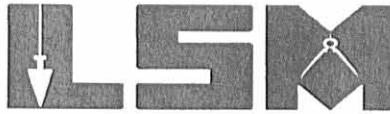
2 WORKING DAYS
BEFORE YOU DIG
 CALL TOLL FREE **800-362-2764**
 OHIO UTILITIES PROTECTION SERVICE

REC'D 4-19-05 SMJ OK

Lee Surveying and Mapping Co., Inc.

Land Surveys • Topography • Subdivisions • Construction Layout

117 N. Madriver St.
Bellefontaine OH 43311



Phone: (937) 593-7335
Fax: (937) 593-7444

1975-2005 - 30 YEARS OF EXCELLENCE

**ENGLE
3.846 ACRES**

Lying in Virginia Military Survey 3327, Jefferson Township, Logan County, Ohio.

Being out of the Larry N. Engle and Joyce A. Engle original 198.000 acre tract as deeded and described in Official Record 146, Page 435 of the Logan County Records of Deeds and being more particularly described as follows:

Beginning at a 3/4 inch iron bolt found on the intersection of the east line of Virginia Military Survey 3327, the west line of Virginia Military Survey 3326 and the center-line of Ohio Route 47.

THENCE, with the center-line of Ohio Route 47 (60 feet wide), S 66°-47'-01"W, a distance of 2103.39 feet to a MAG nail set at the TRUE POINT OF BEGINNING.

THENCE, with the center-line of Ohio Route 47, the following two courses:

S 66°-47'-01"W, a distance of 392.04 feet to a MAG nail set on the intersection of the center-lines of Ohio Route 47 and Township Road 135.

S 79°-24'-01"W, a distance of 77.62 feet to a MAG nail set.

THENCE, N 13°-18'-00"W, a distance of 385.24 feet to a 5/8 inch iron rod set, passing a 5/8 inch iron rod set at 30.03 feet.

THENCE, N 76°-30'-00"E, a distance of 463.72 feet to a 1 inch iron bar found.

THENCE, with the west line of the Michael W. Powell 1.85 acre tract (O.R. 325, Pg. 703), S 13°-18'-00"E, a distance of 323.00 feet to the point of beginning, passing a 5/8 inch iron rod set at 292.55 feet.

Containing 3.846 acres, of which 0.323 acre is within the highway right-of-way.

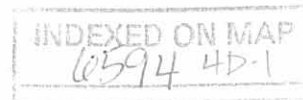
The basis for bearings is the north line of Virginia Military Survey 3327, being N 81°-00'-00"E, and all other bearings are from angles and distances measured in a field survey by Lee Surveying and Mapping Co., Inc. on April 15, 2005.



ORIGINAL STAMP IN GREEN

Description prepared by:

Jeffrey I. Lee
Professional Surveyor 6359
April 18, 2005



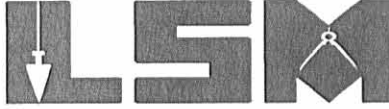
L-804

REC'D 4-19-05 SLM/OK

Lee Surveying and Mapping Co., Inc.

Land Surveys • Topography • Subdivisions • Construction Layout

117 N. Madriver St.
Bellefontaine OH 43311



Phone: (937) 593-7335
Fax: (937) 593-7444

1975-2005 - 30 YEARS OF EXCELLENCE

**ENGLE
9.898 ACRES**

Lying in Virginia Military Survey 3326, Rushcreek Township, Logan County, Ohio.

Being out of the Larry N. Engle and Joyce A. Engle original 198.000 acre tract as deeded and described in Official Record 146, Page 435 of the Logan County Records of Deeds and being more particularly described as follows:

Beginning at a 3/4 inch iron bolt found on the intersection of the east line of Virginia Military Survey 3327, the west line of Virginia Military Survey 3326 and the center-line of Ohio Route 47.

THENCE, with the east line of Virginia Military Survey 3327 and the west line of Virginia Military Survey 3326, N 8°-47'-20"W, a distance of 695.26 feet to a 5/8 inch iron rod set at the TRUE POINT OF BEGINNING.

THENCE, with the east line of Virginia Military Survey 3327 and the west line of Virginia Military Survey 3326, N 8°-47'-20"W, a distance of 1291.89 feet to a railroad spike found, N 8°-47'-20"W 1.50 feet from the center-line of Township Road 273, passing a 5/8 inch iron rod set at 1265.39 feet.

THENCE, with the north line of Virginia Military Survey 3326 and the south line of Virginia Military Survey 3323 and within the right-of-way of Township Road 273 (50 feet wide), N 81°-00'-08"E, a distance of 286.40 feet to a 1-1/2 inch iron pipe found with a 5/8 inch iron rod found inside, S 12°-55'-46"E 2.40 feet from the center-line of Township Road 273 .

THENCE, with the west lines of the Scott P. Levan 6.163 acre tract (O.R. 705, Pg. 234) and the Steven R. Gregg original 57.55 acre tract (O.R. 105, Pg. 556), S 12°-55'-46"E, a distance of 1298.99 feet to a 5/8 inch iron rod found.

THENCE, with the north line of the John F. Capen 7.000 acre tract (O.R. 148, Pg. 399), S 81°-36'-48"W, a distance of 380.20 feet to the point of beginning.

Containing 9.898 acres, of which 0.162 acre is within the highway right-of-way.

The basis for bearings is the north line of Virginia Military Survey 3327, being N 81°-00'-00"E, and all other bearings are from angles and distances measured in a field survey by Lee Surveying and Mapping Co., Inc. on April 15, 2005.



ORIGINAL STAMP IN GREEN

Description prepared by:

Jeffrey I. Lee
Professional Surveyor 6359
April 18, 2005

INDEXED ON MAPL-804
6594 4D-2



Lee Surveying and Mapping Co.



Farm Surveys • Lot Surveys • Topography • Subdivisions • Construction Layout

143 EAST COLUMBUS AVENUE
BELLEFONTAINE, OHIO 43311

(513) 593-7335

JEFFREY I. LEE, P.S.

HERMAN E. MINER (198.00 ACRES)

Lying in V.M.S. 3326 and V.M.S. 3327, Jefferson Township and Rushcreek Township, Logan County, Ohio.

Being out of the Herman E. Miner 314.10 acre tract as deeded and described in Official Record 132, Page 684 of the Logan County Records of Deeds and being more particularly described as follows:

Beginning at a PK Nail found on the center-line of State Route 47, S 66°-47'-00" W, a distance of 26.44 feet from a bolt found on the center-line of State Route 47 on the line between V.M.S. 3326 and V.M.S. 3327.

THENCE, with the center-line of State Route 47, S 66°-47'-00" W, a distance of 1793.12 feet to a PK Nail found.

THENCE, with the lines of the Powell 1.85 acre tract (O.R. 33, Pg. 239) the following three courses:

N 18°-06'-00" W, a distance of 276.00 feet to a 5/8 inch iron rod found.

S 76°-30'-00" W, a distance of 256.50 feet to a 5/8 inch iron rod found.

S 13°-18'-00" E, a distance of 323.00 feet to a PK Nail found on the center-line of State Route 47.

THENCE, with the center-line of State Route 47, S 66°-47'-00" W, a distance of 392.04 feet to a bolt found at the intersection of center-lines of State Route 47 and County Highway 135.

THENCE, continuing with the center-line of State Route 47, S 79°-24'-00" W, a distance of 1018.77 feet to a bolt found.

THENCE, through the 314.10 acre tract, N 10°-19'-25" W, a distance of 2629.11 feet to a 5/8 inch iron rod set.

THENCE, with the south lines of the Kelly Mobley 47.27 acre tract and 73.0 acre tract (O.R. 45, Pg. 807) and the Robert Inskeep 40.74 acre tract (Vol. 370, Pg. 368) and the center-line of Township Road 273, N 81°-00'-00" E, a distance of 3791.84 feet to a 5/8 inch iron rod found in a 2-1/2 inch pipe.

THENCE, with the west line of the Steven Gregg 57.55 acre tract (O.R. 105, Pg. 556), S 12°-55'-46" E, a distance of 1298.99 feet to a 5/8 inch iron rod set.

THENCE, S 81°-36'-48" W, a distance of 421.14 feet to a 5/8 inch iron rod set.

THENCE, S 10°-02'-25" E, a distance of 702.30 feet to the point of beginning.

Containing 198.000 acres of which:

108.055 acres are in Rushcreek Township with 98.157 acres in V.M.S. 3327 of which 0.484 acre is within the right-of-way of Township Road 273 and 9.898 acres are in V.M.S. 3326 of which 0.165 acre is within the right-of-way of Township Road 273.

89.945 acres are in V.M.S. 3327, Jefferson Township of which 0.971 acre is within the right-of-way of State Route 47.

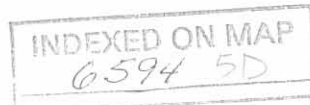
The basis for bearings is based upon the center-line of Township Road 273 being N 81°-00'-00" E, and all other bearings are from angles and distances measured in field surveys by Lee Surveying and Mapping Company in March 1981 and January 1992.



ORIGINAL STAMP IN GREEN

Description prepared by:

Jeffrey I. Lee
Jeffrey I. Lee
Professional Surveyor 6359
January 13, 1992



KELLY MOBLEY
47.27 AC.
O.R. 45, PG. 807

V.M.S. 9823

V.M.S. 3323

73.0 AC.
O.R. 45, PG. 807

N 81°00'00"E
3791.84'

ROBERT INSKEEP
40.74 AC.
VOL. 370, PG. 368

50.0'
1298.99'

TOWNSHIP ROAD 273

198.000 ACRES

ACREAGE BREAKDOWN

RUSHCREEK TOWNSHIP 108.055 ACRES OF WHICH
0.649 ACRE IS WITHIN THE HIGHWAY RIGHT-OF-WAY
98.157 ACRE IS WITHIN V.M.S. 3327
9.898 ACRE IS WITHIN V.M.S. 3326

RUSHCREEK TOWNSHIP
JEFFERSON TOWNSHIP

ACREAGE BREAKDOWN

JEFFERSON TOWNSHIP 89.945 ACRES OF WHICH
0.971 ACRE IS WITHIN THE HIGHWAY RIGHT-OF-WAY

421.14'
S 81°36'48"W

7.000 ACRES
SURVEYED 1/7/1992

HERMAN E. MINER
ORIG. 314.10 AC.
O.R. 132, PG. 684

STEVEN GREGG
57.55 AC.
O.R. 105, PG. 556

47

NOTE: THE BASIS FOR THIS SURVEY IS FROM FIELD NOTES OF A SURVEY BY LEE SURVEYING AND MAPPING COMPANY IN MARCH OF 1981. VARIATIONS FROM THAT SURVEY ARE DUE TO THE PRACTICE AT THAT TIME OF ROUNDING BEARINGS TO THE NEAREST 10 SECONDS.

SURVEY OF 198.000 ACRES OUT OF THE
HERMAN E. MINER 314.10 ACRE TRACT
OFFICIAL RECORD 132, PAGE 684
V.M.S. 3326 & V.M.S. 3327
JEFFERSON AND RUSHCREEK TOWNSHIPS
LOGAN COUNTY, OHIO

SURVEYED BY:

JEFFREY I. LEE
PROFESSIONAL SURVEYOR 6359
MARCH 1981 AND
JANUARY 7, 1992



LEE SURVEYING & MAPPING CO.
143 East Columbus Avenue
BELLEFONTAINE, OHIO 43311
(513) 593-7335

ORIGINAL STAMP IN GREEN

DISK 62 MTLAKE

L 804-28



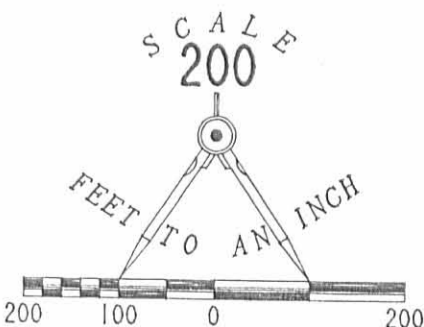
LEGEND

- PK NAIL FOUND
- BOLT FOUND
- 5/8" I. ROD FOUND
- 5/8" I. ROD FOUND IN 2-1/2" PIPE
- 5/8" I. ROD SET

N 1°19'27" W
2629.11'

HERMAN E. MINER
ORIG. 314.10 AC.
O.R. 132, PG. 684

256.50'
S 76°30'00"W
323.00'
S 13°18'00"E
M. POWELL
1.85 AC.
O.R. 33,
PG. 239
276.00'
N 18°06'00"W



REFERENCES:
O.D.O.T. STATE ROUTE 47 RIGHT-OF-WAY PLANS
LOGAN COUNTY ENGINEER DRAWING X-273
LOGAN COUNTY ENGINEER DRAWING K-90

COUNTY HIGHWAY 135

1018.77'
S 79°24'00"W

392.04'
S 66°47'00"W

1793.12'
S 66°47'00"W

S 35°20'01" S
352.20'

V.M.S. 3327

V.M.S. 3326

26.44'

60.0'

47

STATE OF OHIO
DEPARTMENT OF TRANSPORTATION
LOG-47-18.22, LOG-47-18.73
& LOG-540-3.70
JEFFERSON TOWNSHIP
LOGAN COUNTY

CALC BY	LOG-47-18.22	OHIO
DATE	LOG-47-18.73	FHWA REGION 5
CHKD BY	LOG-540-3.70	FEDERAL PROJECT No.
DATE	RS-BRS-693(9) BRZ 4607(1)	

R/W ONLY | LOG-47-18.22/18.73
PID 4642 | SJN 07687(0)

CONVENTIONAL SIGNS

County Line	-----	Limited Access (only)	----- LA
Township Line	-----	Right of Way (only)	----- RW
Section Line	-----	Limited Access & Right of Way	----- LA & RW
Corporation Line	----- or -----	Existing Right of Way	----- Ex. R/W
Fence Line (existing)	----- (proposed) -----	Property Line	----- (in existing fence) -----
Center Line	-----	Railroad	----- or -----
Trees	⊙, Stumps A, (to be removed) ⊗	Guardrail (existing)	----- (proposed) -----
Utility Poles: Telephone	⊙, Power	Work Limits	-----

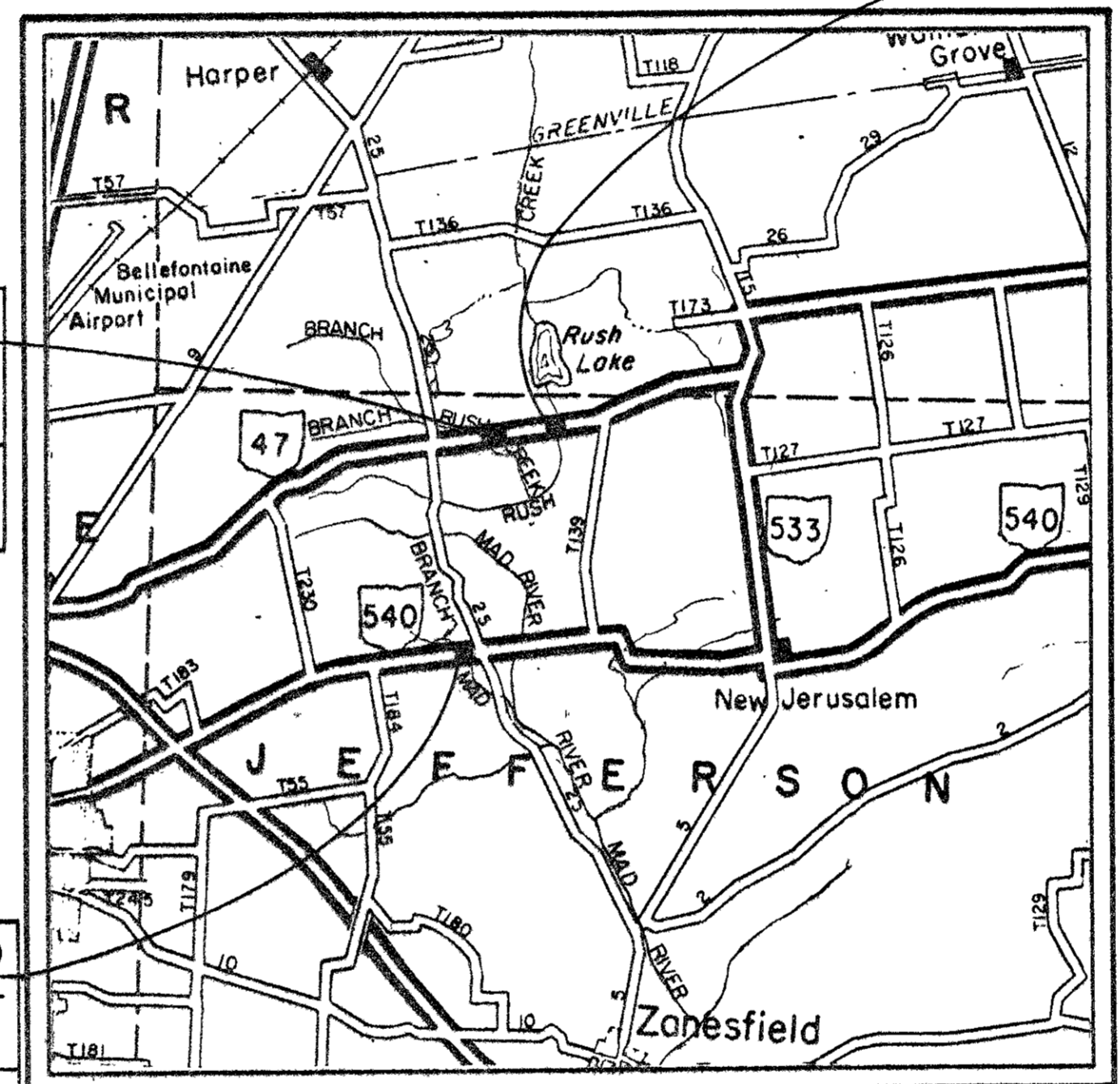
INDEX OF SHEETS

TITLE SHEET	
LOG-47-18.22	
CENTER LINE SURVEY PLAT	1
PROPERTY MAP	2
RIGHT OF WAY SUMMARY	3
PLAN SHEET	3
LOG-47-18.73	
CENTER LINE SURVEY PLAT	4
PROPERTY MAP	5
RIGHT OF WAY SUMMARY	6
PLAN SHEET	6
LOG-540-3.70	
CENTER LINE SURVEY PLAT	7
PROPERTY MAP	8
RIGHT OF WAY SUMMARY	9
PLAN SHEET	9
SUMMARY OF ADDITIONAL RIGHT OF WAY	10

LOG-47-18.22
BEGIN PROJECT
STA. 962+25
SUSPEND PROJECT
STA. 962+90

LOG-540-3.70
RESUME PROJECT
STA. 195+15
END PROJECT
STA. 195+80

LOG-47-18.73
RESUME PROJECT
STA. 988+90
SUSPEND PROJECT
STA. 989+80



LOCATION MAP

SCALE IN MILES

Portion to be improved -----
State & Federal Routes -----
Other Roads -----
Detours -----

SCALES

Plan -----

UNDERGROUND UTILITIES
TWO WORKING DAYS BEFORE YOU DIG
Call 800-362-2764 (Toll free)
OHIO UTILITIES PROTECTION SERVICE
Non-Members Must be called directly.

ACQUIRING AGENCY: STATE OF OHIO

APPROVED _____
DIRECTOR, DEPARTMENT OF TRANSPORTATION DATE

APPROVED _____
ASSISTANT DEPUTY DIRECTOR REAL ESTATE ADMINISTRATION DATE

PLANS PREPARED BY
STICKLEN-BELSHEIM & ASSOCIATES
COLUMBUS, OHIO

DEPARTMENT OF TRANSPORTATION
FEDERAL HIGHWAY ADMINISTRATION
APPROVED: _____
DIVISION ADMINISTRATOR DATE

Project: _____
Date of Letting _____ 19____, Contract No. _____
STICKLEN-BELSHEIM & ASSOCIATES

PROPERTY MAP

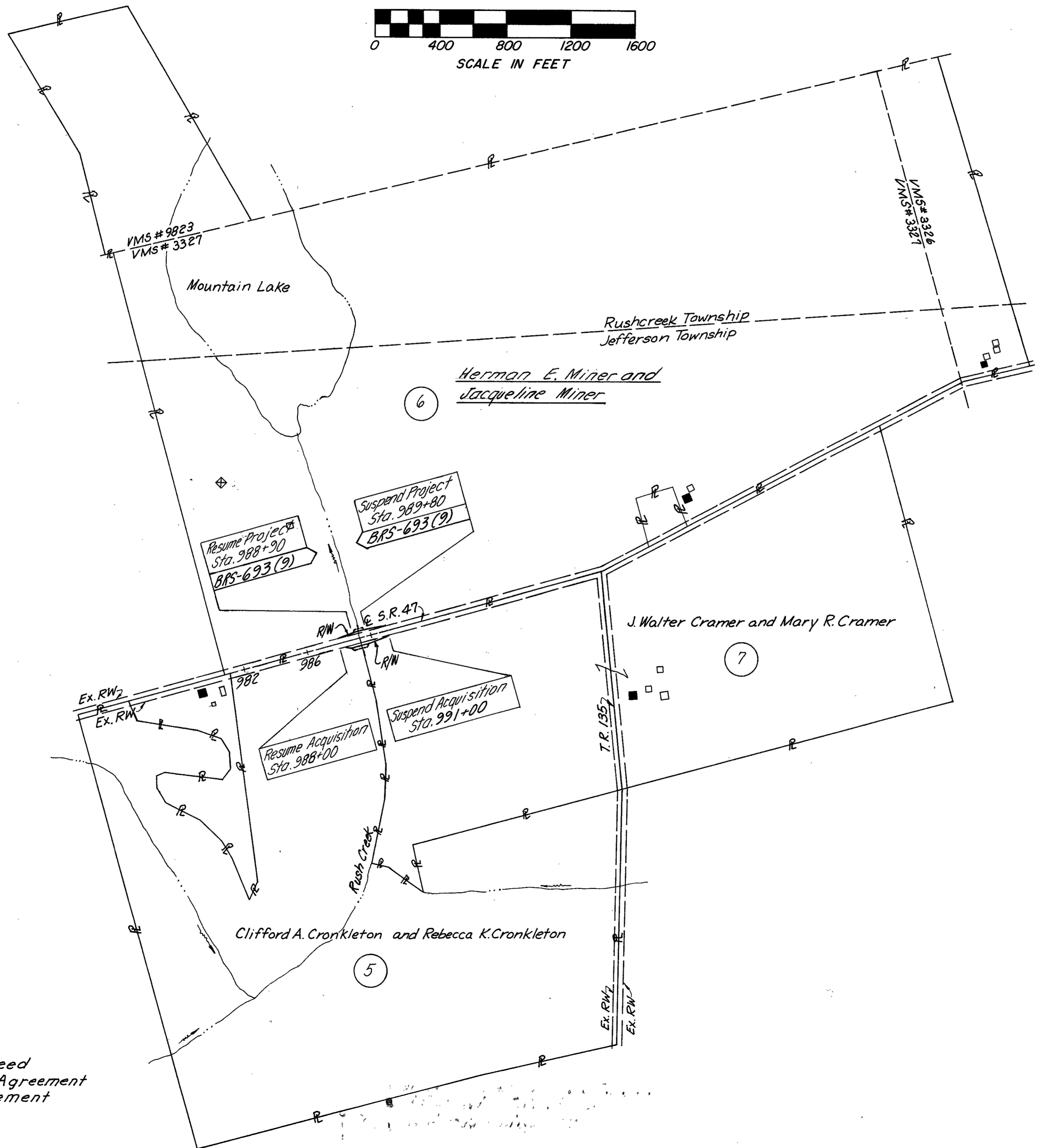
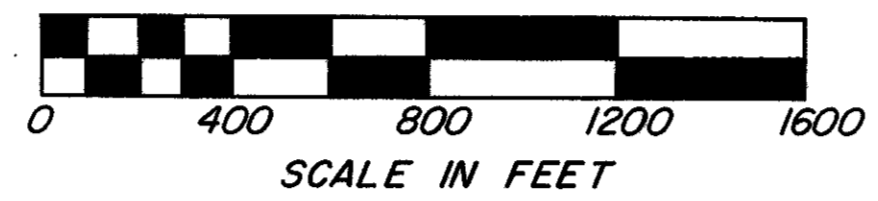
LOGAN COUNTY

RUSHCREEK AND JEFERSON TOWNSHIP

VIRGINIA MILITARY SURVEY NOS. 3326, 3327 & 9823

CALC BY	LOG-47-18.22 ETC.	OHIO	42 47
DATE	LOG-47-18.73	FHWA REGION 5	5 10
CHKD BY			
DATE			

FEDERAL PROJECT NO. BRS-693(9)
STATE JOB NO. 07687(0)



Building Legend

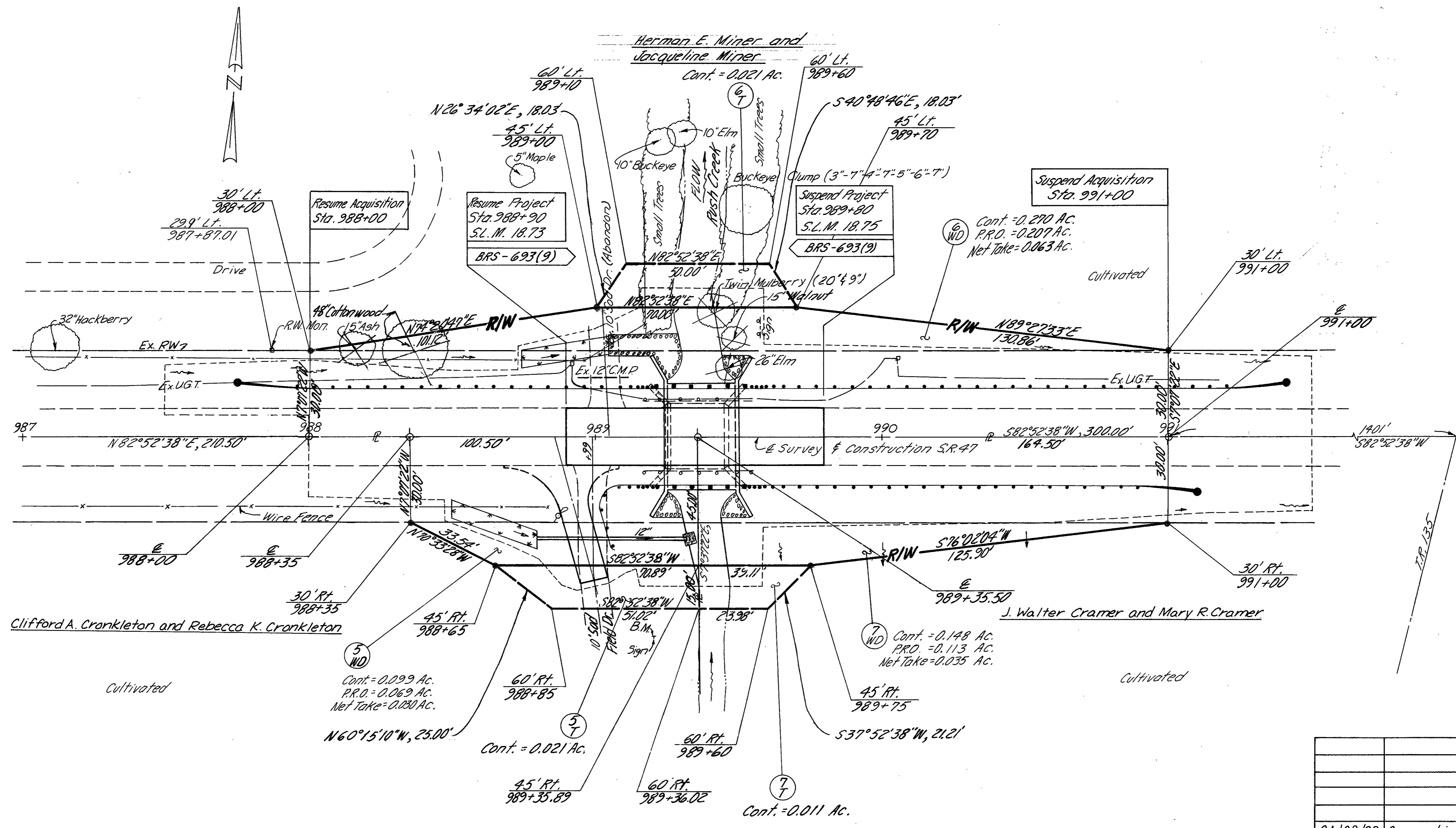
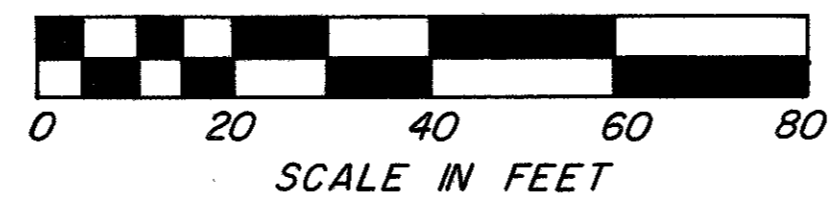
- ☒ Commercial
- Residence
- Outbuilding

WD= Warranty Deed
T= Temporary Agreement
X= Channel Easement

04/02/92	Ownership Change Parcel 6	RAM
02/27/92	Legends & Buildings Added	MLD
DATE	REVISION	BY
COMPLETION DATE		

LOGAN COUNTY
JEFFERSON TOWNSHIP
VIRGINIA MILITARY SURVEY NO 3327

CALC. BY	LOG-47-18.22 ETC.	OHIO	43
DATE		FHWA	47
CHKD. BY	LOG-47-18.73	REGION	5
DATE			6
			10



Clifford A. Crankleton and Rebecca K. Crankleton

J. Walter Cramer and Mary R. Cramer

Set November 1993 By O.D.O.T.
 • 5/8" I.P. With O.D.O.T. Cap Set
 ✧ Railroad Spike Set

04/02/92	Ownership Change Parcel 6.	RAM
DATE	REVISION	BY

RW Sta. 987+00 to Sta. 991+50

SUMMARY OF ADDITIONAL RIGHT OF WAY

CALC. BY: VDK DATE: 9/91	LOG-47-18.22 ETC.	OHIO	(47)
CHKD. BY: HEC DATE: 12-91	LOG-540-3.70	FHWA REGION 5	(47)
FEDERAL PROJECT NO. RS-693(9)			(10)
FEDERAL PROJECT NO. BRS-693(9)			(10)
FEDERAL PROJECT NO. BRZ-4607(1)			

TOTAL NUMBER OF _____
 10 OWNERS
 0 TOTAL TAKES
 0 OWNERS WITH STRUCTURES INVOLVED
 1 OWNERSHIPS WITH "P" ITEMS

* Calculated

PID 4642

STATE JOB NO. 07687(0)

PARCEL	OWNER	AUDITORS PARCEL NO.	SHEET NO.	OWNERS RECORD		RECORD AREA	TOTAL P.R.O.	GROSS TAKE	P.R.O. IN TAKE	NET TAKE	STRUC-TURE	NET RESIDUE		TYPE FUND	REMARKS AND PERSONALTY	AS ACQUIRED	
				BOOK	PAGE							LEFT	RIGHT			BOOK	PAGE
LOG-47-18.22 RS-693(9)	1 WD	12-079-00-00-020 12-079-00-00-019 40-079-00-00-021	3	D.B.306	395	101.56 Ac.	1.607 Ac.*	0.330 Ac. 0.059 Ac.	0.202 Ac. 0 Ac.	0.128 Ac. 0.059 Ac.	---	99.825 Ac.	---	↑	Channel Easement	177	858
	1 X															177	860
	2 WD	12-079-00-00-026.003	3	O.R. 68	509	6.507 Ac.	0.451 Ac.*	0.359 Ac.	0.196 Ac.	0.163 Ac.	---	---	5.892 Ac.	---	---	178	155
	3 T	12-079-00-00-025	3	D.B.372	516	99.04 Ac.	0.573 Ac.*	0.008 Ac.	0 Ac.	0.008 Ac.	---	---	98.467 Ac.	---	Temporary Easement (1 Year)	177	287
4	12-079-00-00-024	3	D.B.379	685	0.96 Ac.	0.165 Ac.*								No RW Required			
LOG-47-18.73 BRS-693(9)	5 WD	12-080-00-00-016 12-080-00-00-017.002	6	O.R. 11 O.R. 1	956 461	140.524 Ac.	1.86 Ac.*	0.099 Ac. 0.021 Ac.	0.069 Ac. 0 Ac.	0.030 Ac. 0.021 Ac.	---	---	138.634 Ac.	---	Temporary Easement (1 Year)	178	151
	5 T															178	153
	6 WD	(See Below)	6	O.R. 132	684	308.12 Ac.	3.47 Ac.*	0.270 Ac. 0.021 Ac.	0.207 Ac. 0 Ac.	0.063 Ac. 0.021 Ac.	P	304.587 Ac.	---	Sign (to be removed) Temporary Easement (1 Year)	177	863	
7 WD	12-080-00-00-015.001 12-080-00-00-015	6	D.B.316	637	111.21 Ac.	4.17 Ac.*	0.148 Ac. 0.011 Ac.	0.113 Ac. 0 Ac.	0.035 Ac. 0.011 Ac.	---	---	107.005 Ac.	100% State	Temporary Easement (1 Year)	177	289	
LOG-540-3.70 BRZ-4607(1)	8 WD	12-079-00-00-056.005	9	O.R. 118	365	8.234 Ac.	0.278 Ac.*	0.181 Ac.	0.116 Ac.	0.065 Ac.	---	7.891 Ac.	---	---	---	175	446
	9 WD	12-093-00-00-004 12-093-00-00-015	9	D.B.280	245	110.369 Ac.	3.616 Ac.*	0.126 Ac.	0.089 Ac.	0.037 Ac.	---	---	106.716 Ac.	---	Area of overlap with existing easement=0.026 Ac. 10 Ft. Utility easement-United Tele.	175	540
	10 WD	12-093-00-00-015.001	9	O.R. 30	274	1.451 Ac.	0.199 Ac.*	0.216 Ac.	0.131 Ac.	0.085 Ac.	---	---	1.167 Ac.	---	Area of overlap with existing easement=0.042 Ac. 10 Ft. Utility easement-United Tele.	175	700
11 WD	12-079-00-00-058	9	O.R. 101	727	5.00 Ac.	0.178 Ac.*	0.128 Ac. 0.026 Ac.	0.074 Ac. 0 Ac.	0.054 Ac. 0.026 Ac.	---	---	4.768 Ac.	---	Temporary Easement (1 Year)	175	542	
11 T													↓				

WD = Warranty Deed
 X = Channel Easement
 T = Temporary Easement

Herman E. Miner and Jacqueline Miner
 Auditors Parcel No.
 12-080-00-00-004
 12-080-00-00-001
 12-080-00-00-001.001
 40-066-00-00-045
 40-066-00-00-046
 40-066-00-00-046.001
 40-065-00-00-060

8/17/92	Utility Easements - parcel 9 & 10	RAM
04/01/92	Ownership Change Parcels 6, 8 & 11.	RAM
DATE	REVISION	BY
COMPLETION DATE		

REC'D 12-20-10 8:44 AM

Lee Surveying and Mapping Co., Inc.

Land Surveys • Topography • Subdivisions • Construction Layout

117 N. Madriver St.
Bellefontaine OH 43311



Phone: (937) 593-7335
Fax: (937) 593-7444
surveys@lsminc.us

BUSSARD 5.021 ACRES

Lying in Virginia Military Survey 3327, Jefferson Township, Logan County, Ohio

Being out of the Orville Bussard and Joyce Arlene Bussard 108.830 acre tract as deeded and described in Official Record 498, Page 857 of the Logan County Records of Deeds and being more particularly described as follows:

Commencing at a 3/4 inch iron bolt found at the intersection of center-lines Ohio Route 47 (60 feet wide) and Township Road 135 at station 1005+00.92.

THENCE, with the center-line of Ohio Route 47, S 82°-33'-42"W, a distance of 2239.60 feet to a MAG nail set at THE TRUE POINT OF BEGINNING.

THENCE, with the center-line of Ohio Route 47, S 82°-33'-42"W, a distance of 11.08 feet to a 3/4 inch iron bolt found at station 982+48.03.

THENCE, with the center-line of Ohio Route 47, S 82°-23'-10"W, a distance of 139.08 feet to a 3/4 inch iron bolt found.

THENCE, with the east line of the Cora T. McClure 69.27 acre tract (O.R. 162, Pg. 122), N 07°-09'-56"W, a distance of 1296.54 feet to a 5/8 inch iron rod set, passing 5/8 inch iron rods set at 30.00 feet and 1036.54 feet.

THENCE, S 55°-32'-09"E, a distance of 344.51 feet to a 5/8 inch iron rod set.

THENCE, S 03°-48'-45"W, a distance of 577.51 feet to a 5/8 inch iron rod set.

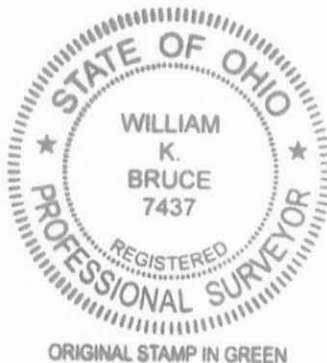
THENCE, S 07°-28'-00"E, a distance of 499.60 feet to the point of beginning, passing a 5/8 inch iron rod set at 470.00 feet.

Containing 5.021 acres of which 0.103 acre is within the highway right-of-way.

Property is subject to any and all previous easements and rights-of-way of record.

The basis for bearings is the center-line of Ohio Route 47, being S 82°-33'42"W, and all other bearings are from angles and distances measured in a field survey by Lee Surveying and Mapping Co., Inc. on December 14, 2010.

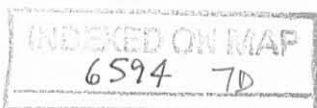
Description prepared by:

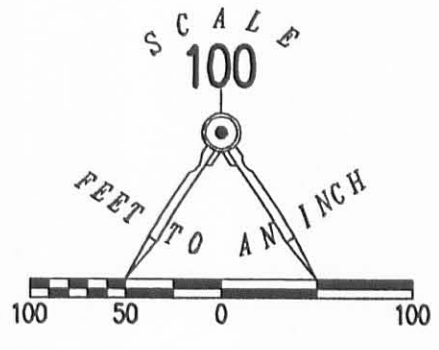
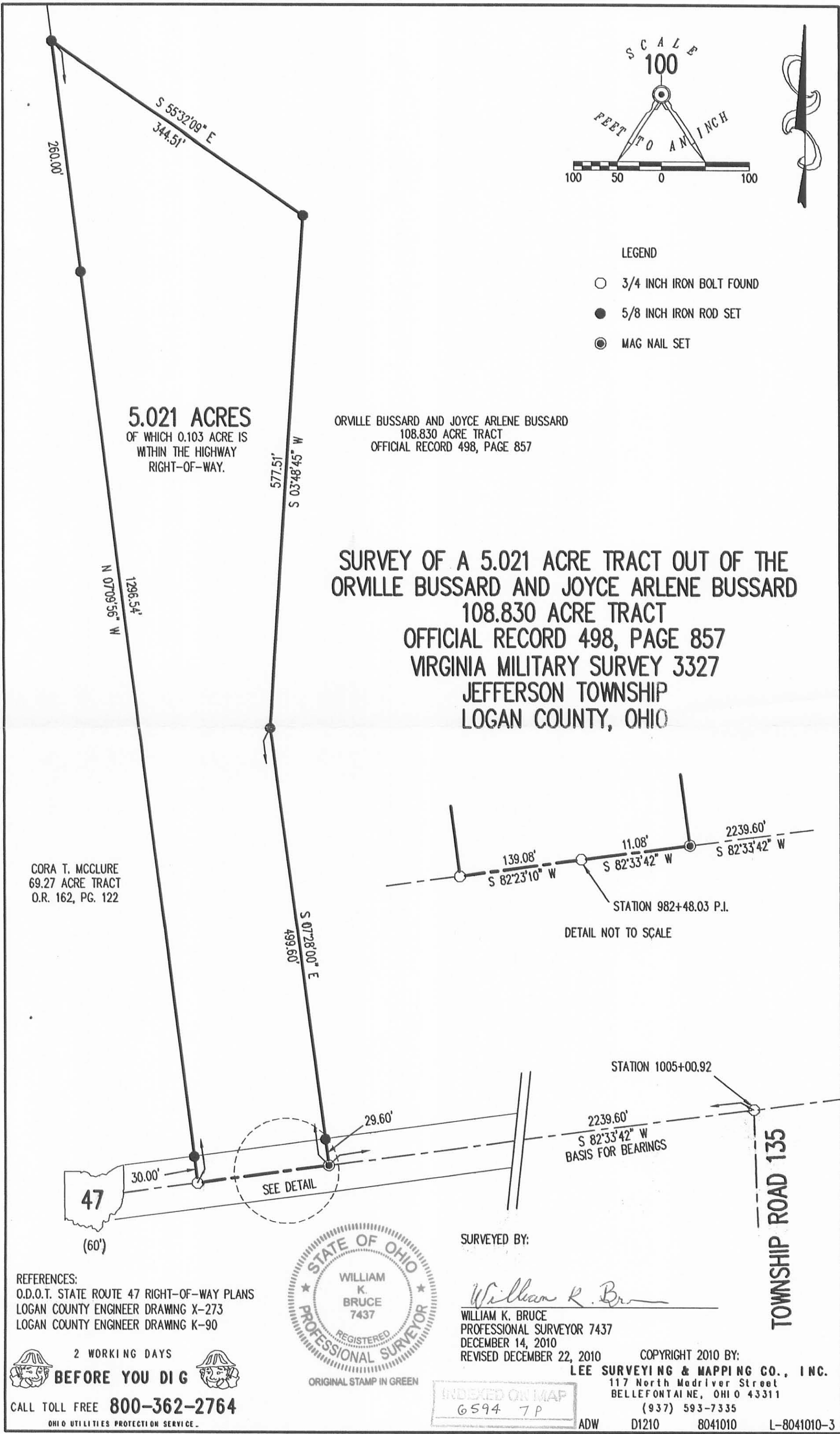


William K. Bruce

William K. Bruce
Professional Surveyor 7437
December 14, 2010

8041010





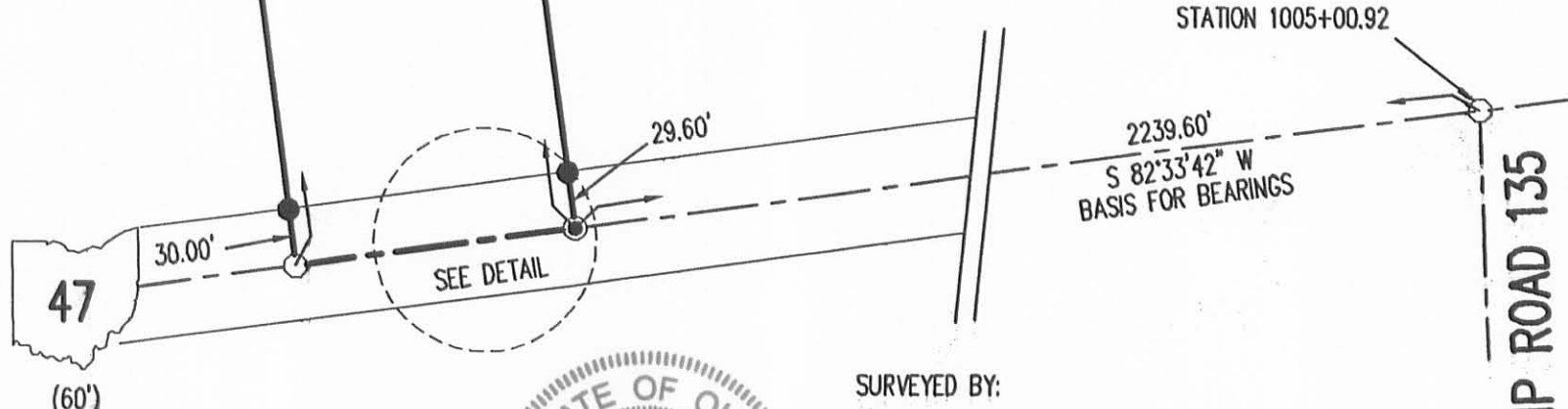
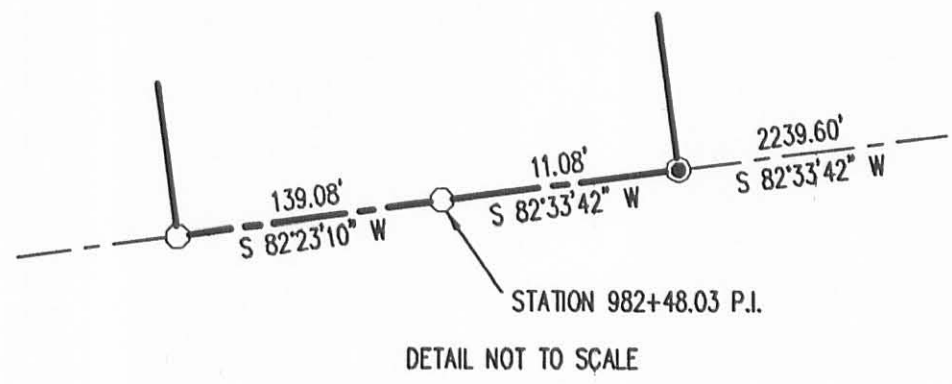
- LEGEND
- 3/4 INCH IRON BOLT FOUND
 - 5/8 INCH IRON ROD SET
 - ⊙ MAG NAIL SET

5.021 ACRES
OF WHICH 0.103 ACRE IS
WITHIN THE HIGHWAY
RIGHT-OF-WAY.

ORVILLE BUSSARD AND JOYCE ARLENE BUSSARD
108.830 ACRE TRACT
OFFICIAL RECORD 498, PAGE 857

**SURVEY OF A 5.021 ACRE TRACT OUT OF THE
ORVILLE BUSSARD AND JOYCE ARLENE BUSSARD
108.830 ACRE TRACT
OFFICIAL RECORD 498, PAGE 857
VIRGINIA MILITARY SURVEY 3327
JEFFERSON TOWNSHIP
LOGAN COUNTY, OHIO**

CORA T. MCCLURE
69.27 ACRE TRACT
O.R. 162, PG. 122



REFERENCES:
O.D.O.T. STATE ROUTE 47 RIGHT-OF-WAY PLANS
LOGAN COUNTY ENGINEER DRAWING X-273
LOGAN COUNTY ENGINEER DRAWING K-90



SURVEYED BY:
William K. Bruce
WILLIAM K. BRUCE
PROFESSIONAL SURVEYOR 7437
DECEMBER 14, 2010
REVISED DECEMBER 22, 2010

2 WORKING DAYS
BEFORE YOU DIG
CALL TOLL FREE **800-362-2764**
OHIO UTILITIES PROTECTION SERVICE

COPYRIGHT 2010 BY:
LEE SURVEYING & MAPPING CO., INC.
117 North Madriver Street
BELLEFONTAINE, OHIO 43311
(937) 593-7335

INDEXED ON MAP
6594 7P

ADW D1210 8041010 L-8041010-3

11-3-14

Lee Surveying and Mapping Co., Inc.



and Surveys • Topography • Subdivisions • Construction Layout

117 N. Madriver St.
Bellefontaine OH 43311



Phone: (937) 593-7335
Fax: (937) 593-7444
surveys@lsminc.us

ENGLE 12.479 ACRES

Lying in Virginia Military Survey 3327, Rushcreek Township, Logan County, Ohio.

Being out of the Larry N. Engle and Joyce A. Engle original 198.000 acre tract as deeded and described in Official Record 146, Page 435 of the Logan County Records of Deeds and being more particularly described as follows:

Commencing at a railroad spike found at the northeast corner of Virginia Military Survey 3327.

THENCE, with the north line of Virginia Military Survey 3327, and within the right-of-way of Township Road 273 (50 feet wide), S 81°-00'-00"W, a distance of 294.93 feet to a railroad spike found at the TRUE POINT OF BEGINNING.

THENCE, with the lines of the Edward Schneider 5.766 acre tract (O.R. 888, Pg. 186, Tract II) the following two courses:

S 04°-02'-43"E, a distance of 769.57 feet to a 5/8 inch iron rod found, passing a 5/8 inch iron rod found at 30.64 feet.

N 78°-22'-20"E, a distance of 368.57 feet to a 5/8 inch iron rod found.

THENCE, with the east line of Virginia Military Survey 3327, S 09°-27'-47"E, a distance of 162.03 feet to a 5/8 inch iron rod set.

THENCE, S 89°-47'-17"W, a distance of 982.83 feet to a 5/8 inch iron rod set.

THENCE, N 08°-53'-44"W, a distance of 592.25 feet to a 5/8 inch iron rod set.

THENCE, N 35°-00'-53"E, a distance of 235.58 feet to a MAG nail set, passing a 5/8 inch iron rod set at 183.03 feet.

THENCE, with the north line of Virginia Military Survey 3327, and within the right-of-way of Township Road 273, N 81°-00'-00"E, a distance of 503.50 feet to the point of beginning.

Containing 12.479 acres of which 0.406 acre is within the highway right-of-way.

Property is subject to any and all previous easements and rights-of-way of record.

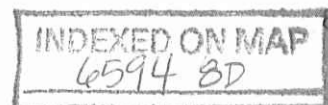
The basis for bearings is the north line of Virginia Military Survey 3327, being N 81°-00'-00"E, and all other bearings are from angles and distances measured in a field survey by Lee Surveying and Mapping Co., Inc. on October 24, 2014.



Description prepared by:

William K. Bruce

William K. Bruce
Professional Surveyor 7437
October 24, 2014

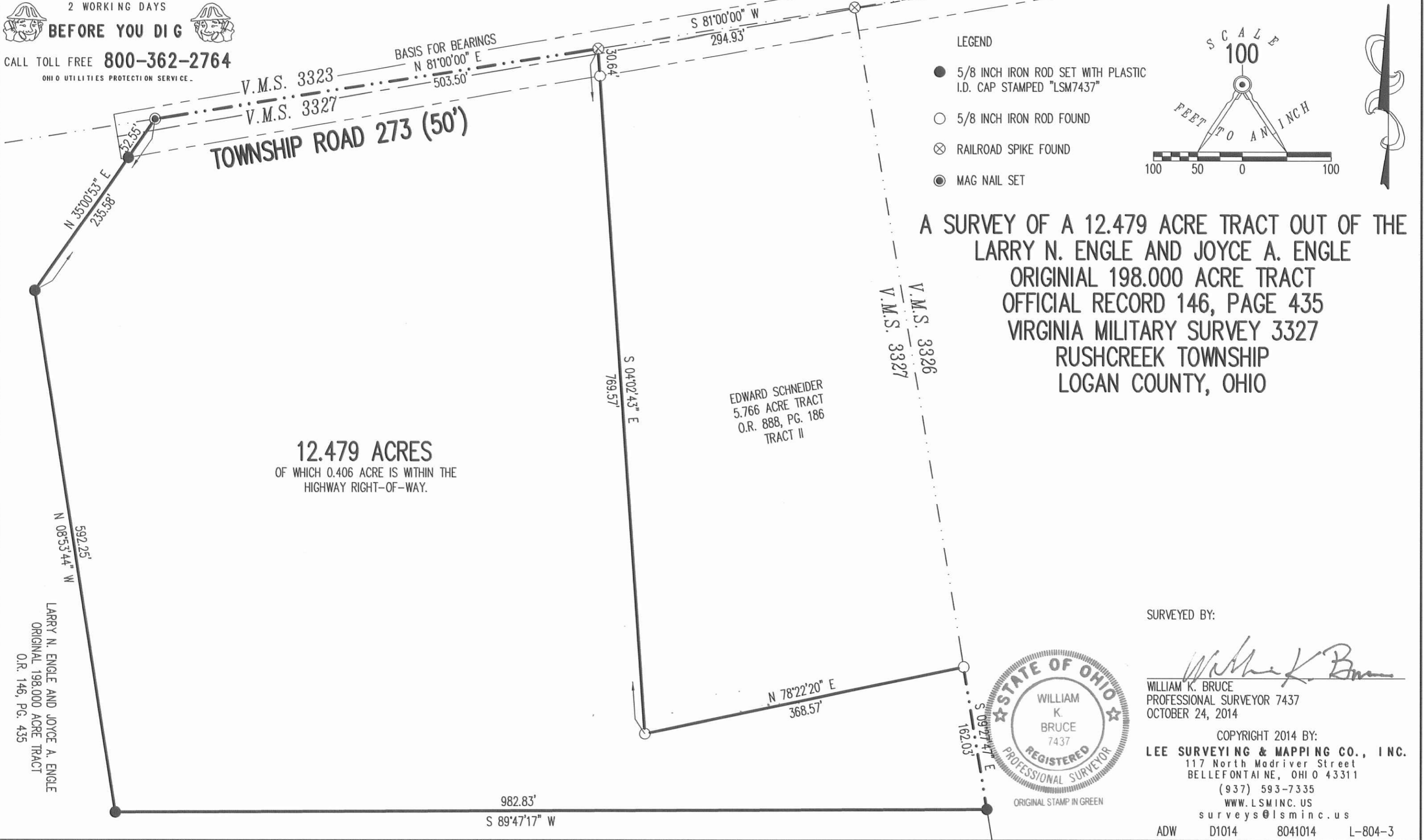


8041014

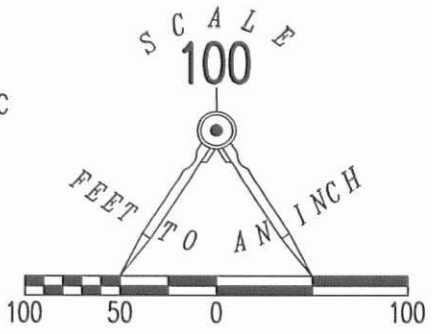
11-3-14

APPROVED

2 WORKING DAYS
BEFORE YOU DIG
CALL TOLL FREE **800-362-2764**
OHIO UTILITIES PROTECTION SERVICE



- LEGEND
- 5/8 INCH IRON ROD SET WITH PLASTIC I.D. CAP STAMPED "LSM7437"
 - 5/8 INCH IRON ROD FOUND
 - ⊗ RAILROAD SPIKE FOUND
 - ⊙ MAG NAIL SET



A SURVEY OF A 12.479 ACRE TRACT OUT OF THE
LARRY N. ENGLE AND JOYCE A. ENGLE
ORIGINAL 198.000 ACRE TRACT
OFFICIAL RECORD 146, PAGE 435
VIRGINIA MILITARY SURVEY 3327
RUSHCREEK TOWNSHIP
LOGAN COUNTY, OHIO

12.479 ACRES
OF WHICH 0.406 ACRE IS WITHIN THE
HIGHWAY RIGHT-OF-WAY.

EDWARD SCHNEIDER
5.766 ACRE TRACT
O.R. 888, PG. 186
TRACT II

LARRY N. ENGLE AND JOYCE A. ENGLE
ORIGINAL 198,000 ACRE TRACT
O.R. 146, PG. 435



SURVEYED BY:
William K. Bruce
WILLIAM K. BRUCE
PROFESSIONAL SURVEYOR 7437
OCTOBER 24, 2014

COPYRIGHT 2014 BY:
LEE SURVEYING & MAPPING CO., INC.
117 North Madriver Street
BELLEFONTAINE, OHIO 43311
(937) 593-7335
WWW.LSMINC.US
surveys@lsminc.us

ADW D1014 8041014 L-804-3

INDEXED ON MAP
6594 BP

0-12-19

APPROVED



EDWARDS SURVEYING
110 South Main Street
Urbana, Ohio 43078
(937) 653-6508



LEGAL DESCRIPTION FOR ENGLE'S 66.071 ACRE TRACT

Being situate in the State of Ohio, County of Logan, Townships of Rushcreek and Jefferson, and being a part of Virginia Military Survey 3327, and being more particularly described as follows:

Beginning for reference at a Mag Nail set at the intersection of the centerline of Township Road 273 (50' right-of-way) and the East line of V.M.S. 3327, also being the West line of V.M.S. 3326, and being at the Northeast corner of a 5.766 acre tract conveyed to John D. & Colleen L. Bodin by deed recorded in Official Record 1226, Page 552, Tract II, and at the Northwest corner of a 9.898 acre tract also conveyed to John D. & Colleen L. Bodin by deed recorded in Official Record 1226, Page 552, Tract I;

thence with the West line of the 9.898 acre tract, the West line of V.M.S. 3326, the East line of V.M.S. 3327, the East line of Bodin's 5.766 acre tract, and with an East line of a 12.479 acre tract conveyed to Scott A. & Georgia F. Roth by deed recorded in Official Record 1168, Page 545, S-4°49'17"-E, 910.49'(feet) to a 5/8" diameter iron bar found at the Southeast corner of Roth's tract and at the **PRINCIPLE PLACE OF BEGINNING** for the tract hereinafter described;

thence continuing with the East line of V.M.S. 3327, the West line of V.M.S. 3326, and the West line of the 9.898 acre tract, S-4°49'17"-E, 383.41'(feet) to a 5/8" diameter iron bar found on the North line of a 7.000 acre tract conveyed to Carolyn Jean Capen by deed recorded in Official Record 1165, Page 572;

thence S-85°39'41"-W, 40.94'(feet) to a 5/8" diameter iron bar found at the Northwest corner of Capen's tract;

thence with the West line of Capen's tract, S-6°04'22"-E, 702.30'(feet) to a P.K. Nail found on the centerline of State Route 47 (60' right-of-way), passing for reference a 5/8" diameter iron bar found on the right-of-way line of State Route 47 at 671.49'(feet);

thence with the centerline of State Route 47, S-70°46'44"-W, 1793.12'(feet) to a Mag Nail set at the Southeast corner of a 1.85 acre tract conveyed to Dan Terry by deed recorded in Official Record 1335, Page 350;

thence N-14°06'16"-W, 276.00'(feet) to a point at the Northeast corner of Terry's tract from which a 5/8" square iron bar found bears S-5°57'04"-E, 2.44'(feet), passing for reference a 5/8" diameter iron bar found on the right-of-way line of State Route 47 at 30.12'(feet);

thence with the North line of Terry's tract and with the North line of a 3.846 acre tract conveyed to Daniel R. & Joanie Mudge by deed recorded in Official Record 777, Page 630, S-80°29'36"-W, 596.96'(feet) to an iron bar set, passing for reference a 5/8" diameter iron bar found at the Northwest corner of Terry's tract at 256.50'(feet);

thence N-0°37'30"-W, 1167.63'(feet) to an iron bar set;

thence N-88°10'11"-E, 1344.09'(feet) to an iron bar set;

INDEXED ON MAP
6594

thence N-4°11'22"-W, 372.25'(feet) to a 5/8" diameter iron bar found at the Southwest corner of
aforementioned Roth's 12.479 acre tract;

thence with the South line of Roth's tract, S-85°30'27"-E, 983.04'(feet) to the place of beginning.

Containing 66.071 acres, 1.236 acres of which is within the Road right-of-way, 18.085 acres of which are in
Rushcreek Township, and 47.986 acres of which are in Jefferson Township, but being subject to the rights of all
legal highways and all easements of record.

Being a part of a 198.000 acre tract conveyed to Larry N. and Joyce A. Engle by deed recorded in Official
Record 146, Page 435, of the Logan County Records.

The foregoing description prepared by and in accordance with a survey by William D. Edwards,
Professional Surveyor No. 7574, August 6, 2019. All iron bars set are 5/8"x30" iron re-bar with a yellow plastic cap
stamped "EDWARDS PS 7574". Bearing are based on the centerline of Township Road 273 per an assumed bearing
of S-84°56'20"-W.



William D. Edwards, P.S. 7574

INDEXED ON MAP
6594

8-12-19

APPROVED



EDWARDS SURVEYING

110 South Main Street
Urbana, Ohio 43078
(937) 653-6508



LEGAL DESCRIPTION FOR ENGLE'S 34.000 ACRE TRACT

Being situate in the State of Ohio, County of Logan, Township of Rushcreek, and being a part of Virginia Military Survey 3327, and being more particularly described as follows:

Beginning for reference at a Mag Nail set at the intersection of the centerline of Township Road 273 (50' right-of-way) and the East line of V.M.S. 3327, also being the West line of V.M.S. 3326, and being at the Northeast corner of a 5.766 acre tract conveyed to John D. & Colleen L. Bodin by deed recorded in Official Record 1226, Page 552, Tract II;

thence with the centerline of Township Road 273, S-84°56'20"-W, 810.12'(feet) to a Mag Nail set at the **PRINCIPLE PLACE OF BEGINNING** for the tract hereinafter described;

thence with a West line of a 12.479 acre tract conveyed to Scott A. & Georgia F. Roth by deed recorded in Official Record 1168, Page 545, S-39°43'36"-W, 218.71'(feet) to a 5/8" diameter iron bar found, passing for reference the right-of-way line of Township Road 273 at 35.23'(feet) and a 5/8" diameter iron bar found at 35.63'(feet);

thence with another West line of Roth's tract and the West line thereof projected, S-4°11'22"-E, 964.41'(feet) to an iron bar set, passing for reference a 5/8" diameter iron bar found at the Southwest corner of Roth's tract at 592.16'(feet);

thence S-88°10'11"-W, 1344.09'(feet) to an iron bar set;

thence N-5°55'20"-W, 1043.89'(feet) to an iron bar set on the South line of a 120.92 acre tract conveyed to Donald R. & Nancy S. Mobley by deed recorded in Official Record 361, Page 569, also being on the South line of a 30' wide right-of-way easement;

thence with the South line of Mobley's tract and the South line of the easement, and the centerline of aforementioned Township Road 273 and the centerline thereof projected, N-84°56'20"-E, 1526.40'(feet) to the place of beginning, passing for reference an iron bar set at the West terminus of Township Road 273 at 1468.22'(feet).

Containing 34.000 acres, 0.026 acre of which is within the Road right-of-way, but being subject to the rights of all legal highways and all easements of record.

Being a part of a 198.000 acre tract conveyed to Larry N. and Joyce A. Engle by deed recorded in Official Record 146, Page 435, of the Logan County Records.

The foregoing description prepared by and in accordance with a survey by William D. Edwards, Professional Surveyor No. 7574, August 6, 2019. All iron bars set are 5/8"x30" iron re-bar with a yellow plastic cap stamped "EDWARDS PS 7574". Bearing are based on the centerline of Township Road 273 per an assumed bearing of S-84°56'20"-W.

William D. Edwards, P.S. 7574

INDEXED ON MAP
6594

8-12-19

APPROVED



EDWARDS SURVEYING

110 South Main Street
Urbana, Ohio 43078
(937) 653-6508



LEGAL DESCRIPTION FOR ENGLE'S 66.070 ACRE TRACT

Being situate in the State of Ohio, County of Logan, Townships of Rushcreek and Jefferson, and being a part of Virginia Military Survey 3327, and being more particularly described as follows:

Beginning for reference at a Mag Nail set at the intersection of the centerline of Township Road 273 (50' right-of-way) and the East line of V.M.S. 3327, also being the West line of V.M.S. 3326, and being at the Northeast corner of a 5.766 acre tract conveyed to John D. & Colleen L. Bodin by deed recorded in Official Record 1226, Page 552, Tract II;

thence with the centerline of Township Road 273, the centerline thereof projected, and with the South line of a 120.92 acre tract conveyed to Donald R. & Nancy S. Mobley by deed recorded in Official Record 361, Page 569, also being the South line of a 30' wide right-of-way easement, S-84°56'20"-W, 2336.52'(feet) to an iron bar set at the **PRINCIPLE PLACE OF BEGINNING** for the tract hereinafter described, passing for reference a Mag Nail set at 810.12'(feet) and an iron bar set at the West terminus of Township Road 273 at 868.30'(feet);

thence S-5°55'20"-E, 1043.89'(feet) to an iron bar set;

thence S-0°37'30"-E, 1167.63'(feet) to an iron bar set on the North line of a 3.846 acre tract conveyed to Daniel R. & Joanie Mudge by deed recorded in Official Record 777, Page 630;

thence S-80°29'36"-W, 123.26'(feet) to a 5/8" diameter iron bar found at the Northwest corner of Mudge's tract;

thence with the West line of Mudge's tract, S-9°18'24"-E, 385.35'(feet) to a Mag Nail found on a centerline tangent of State Route 47 (60' right-of-way) passing for reference the right-of-way line of State Route 47 at 353.13'(feet) and a 5/8" diameter iron bar found at 355.26'(feet);

thence with the centerline of State Route 47 and the centerline tangent thereof, S-83°18'43"-W, 941.19'(feet) to a Mag Nail set at the Southeast corner of a 103.809 acre tract conveyed to Jeffrey R. Powell & Tracy A. Powell, Trustees, by deed recorded in Official Record 1279, Page 894, Parcel 1;

thence with the East line of Powell's tract, N-6°19'10"-W, 2629.11'(feet) to an iron bar set on the South line of Watkins Allotment No. 1 as recorded in Plat Cabinet "A", Slide 315, and the North line of V.M.S. 3327, passing for reference an iron bar set on the right-of-way line of State Route 47 at 30.00'(feet);

thence with the South line of said Watkins Allotment, the South line of said Mobley's 120.92 acre tract, the South line of the right-of-way easement, and the North line of V.M.S. 3327, N-84°56'20"-E, 1167.53'(feet) to the place of beginning.

Containing 66.070 acres, 0.649 acre of which is within the Road right-of-way, 27.646 acres of which is in Rushcreek Township, and 38.424 acres of which is in Jefferson Township, but being subject to the rights of all legal highways and all easements of record.

Being a part of a 198.000 acre tract conveyed to Larry N. and Joyce A. Engle by deed recorded in Official Record 146, Page 435, of the Logan County Records.

The foregoing description prepared by and in accordance with a survey by William D. Edwards, Professional Surveyor No. 7574, August 6, 2019. All iron bars set are 5/8"x30" iron re-bar with a yellow plastic cap stamped "EDWARDS PS 7574". Bearing are based on the centerline of Township Road 273 per an assumed bearing of S-84°56'20"-W.

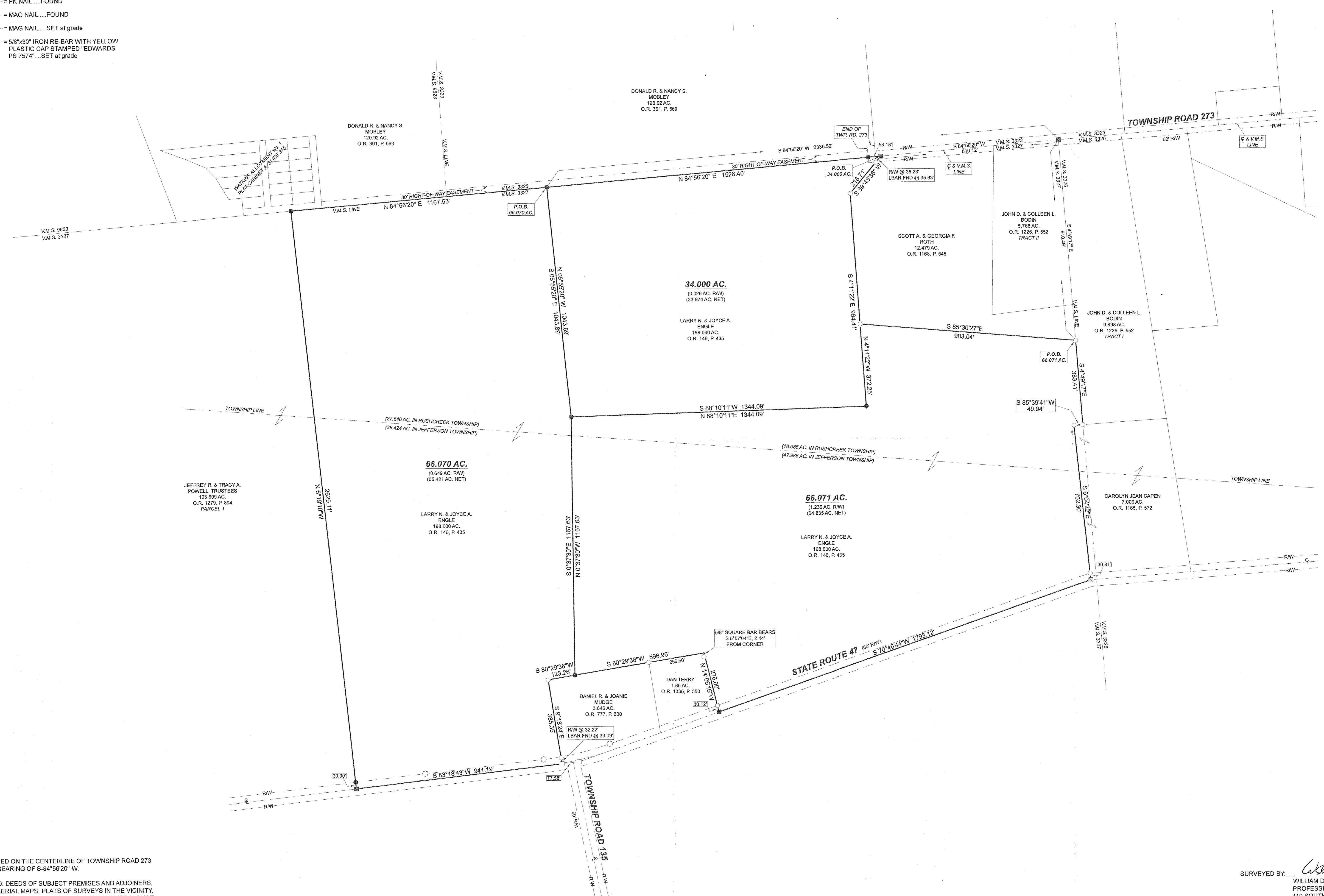
William D. Edwards, P.S. 7574

INDEXED ON MAP
6594

PLAT OF SURVEY
JEFFERSON AND RUSHCREEK TOWNSHIPS, LOGAN COUNTY, OHIO
VIRGINIA MILITARY SURVEY No. 3327

SCALE: 1" = 200'
DATE: AUGUST 6, 2019

- LEGEND**
- = CONCRETE RIGHT-OF-WAY MONUMENT.....FOUND
 - = 5/8" DIA. IRON BAR.....FOUND
 - ⊠ = PK NAIL.....FOUND
 - = MAG NAIL.....FOUND
 - = MAG NAIL.....SET at grade
 - = 5/8"x30" IRON RE-BAR WITH YELLOW PLASTIC CAP STAMPED "EDWARDS PS 7574".....SET at grade



NOTES:

- BEARINGS ARE BASED ON THE CENTERLINE OF TOWNSHIP ROAD 273 PER AN ASSUMED BEARING OF S-84°56'20"-W.
- REFERENCES USED: DEEDS OF SUBJECT PREMISES AND ADJOINERS, COUNTY TAX AND AERIAL MAPS, PLATS OF SURVEYS IN THE VICINITY, RECORD PLAT OF WATKINS ALLOTMENT No. 1 - PLAT CABINET A, SLIDE 315, TOWNSHIP ROAD 273 RIGHT-OF-WAY PLANS (X-273), FIELD BOOK 699 - PAGES 34-38, STATE ROUTE 47 RIGHT-OF-WAY PLANS.

SURVEYED BY: *William D. Edwards*
 WILLIAM D. EDWARDS
 PROFESSIONAL SURVEYOR No. 7574
 110 SOUTH MAIN STREET
 URBANA, OHIO 43078
 (937)653-6508





5-31-22
APPROVED



INNOVATIVE IDEAS
EXCEPTIONAL DESIGN
UNMATCHED CLIENT SERVICE

ENGLE 4.322 ACRES

Situate in the State of Ohio, Logan County, Rushcreek Township and lying in Virginia Military Survey 3327, and being out of the 198.000 acres as conveyed to Larry N. Engle and Joyce A. Engle by deed of record in Official Record 146, Page 435 (all records referenced herein refer to the Logan County Records of Deeds) and being more particularly described as follows:

BEGINNING at a 5/8 inch iron rebar found (I.D. cap stamped "Edwards PS 7574") on the common line to Virginia Military Surveys 3327 and 3323, at the terminus of the right-of-way of Township Road 273 at Station 0+00 (Logan County Engineer's Field Book 701, Page 34):

THENCE, North 84°-56'-29" East, a distance of 58.19 feet, with said common Virginia Military Survey lines and said center-line, to a magnetic nail found at a corner common to the remainder of said 198.000 acre tract and that 12.479 acres as conveyed to Scott A. Roth and Georgia F. Roth by deed of record in Official Record 1168, Page 545;

THENCE, with the lines common to the remainder of said 198.000 acre and 12.479 acre tracts;

South 39°-45'-30" West, a distance of 218.76 feet, passing a 5/8 inch iron rebar found (I.D. cap stamped "LSM") at a distance of 35.57 feet, to a 5/8 inch iron rebar found (I.D. cap stamped "LSM"); and

South 04°-10'-59" East, a distance of 132.61 feet to a 5/8 inch iron rebar set (I.D. cap stamped "DLZ OHIO INC.");

THENCE, with new division lines through said 198.000 acre tract:

South 86°-45'-21" West, a distance of 631.18 feet to a 5/8 inch iron rebar set (I.D. cap stamped "DLZ OHIO INC.");

North 06°-01'-14" West, a distance of 267.83 feet to a 5/8 inch iron rebar set (I.D. cap stamped "DLZ OHIO INC.") on the common line to said Virginia Military Surveys 3327 and 3323 and the line common to said 198.000 acre tract and that 120.92 acres as conveyed to Donald R. Mobley and Nancy S. Mobley by deed of record in Official Record 361, Page 569;

INDEXED ON MAP
6594

117 N Madriver St, Bellefontaine, OH 43311 | OFFICE 937.593.7335 | ONLINE WWW.DLZ.COM

Akron Bellefontaine Bridgeville Burns Harbor Chicago Cincinnati Cleveland Columbus Detroit Flint Fort Wayne Indianapolis Joliet
Kalamazoo Lansing Lexington Louisville Madison Melvindale Munster Muskegon Pittsburgh Port Huron Saint Joseph South Bend Toledo
Waterford



5-31-22
APPROVED



INNOVATIVE IDEAS
EXCEPTIONAL DESIGN
UNMATCHED CLIENT SERVICE

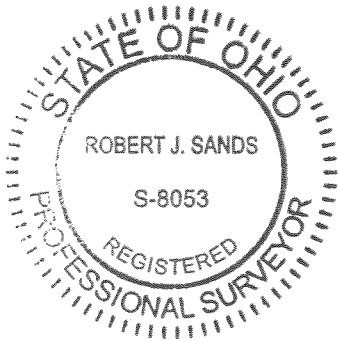
THENCE, North 84°-56'-29" East, a distance of 733.40 feet, with said common line to Virginia Military Surveys and said 198.000 acre and 120.92 acre tracts, to the **POINT OF BEGINNING**;

Containing 4.322 acres, more or less, of which 0.026 acre is within the highway right-of-way.

The bearings in the above description are based on the grid bearing of North 84°56'29" East for the common line to Virginia Military Surveys 3327 and 3323 as determined by a GPS network of field observations performed in May, 2022 and are based upon the Ohio State Plane Coordinate System, North Zone, NAD83 (2011).

All rebar set are 5/8 inch in diameter and 30 inches in length, with a yellow cap stamped "DLZ OHIO INC."

I certify that this description is based upon a survey conducted under my direct supervision in May, 2022 and that it and the information contained herein are true and correct to the best of my knowledge.



DLZ Ohio, Inc.

Robert J. Sands 05/25/22

Robert J. Sands
Professional Surveyor No. 8053

2221-2031.00

INDEXED ON MAP
6594

5-31-22



BOUNDARY SURVEY OF 4.322 ACRES

VIRGINIA MILITARY SURVEY 3327
RUSHCREEK TOWNSHIP
LOGAN COUNTY, OHIO

DONALD R. MOBLEY AND
NANCY S. MOBLEY
120.92 ACRES
O.R. 361, PG. 569

P.O.B.
STATION 0+00
(LOGAN COUNTY ENGINEER'S
FIELD BOOK 701, PAGE 34)

TERMINUS OF
TOWNSHIP ROAD 273

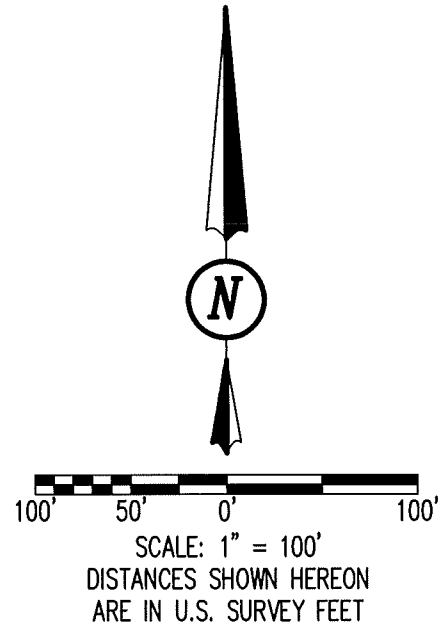
DEED & SURVEY REFERENCES:
DEED REFERENCES ARE SHOWN HEREON.

LOGAN COUNTY ENGINEER'S MAP ROOM FILES:
2128, 3447, 6594 AND 6719

NOTE:

REMAINDER OF THE 198.000 ACRE TRACT IS
TO BE TO CONVEYED AND ATTACHED TO AN
ADJOINER TRACT WITH ROAD FRONTAGE PRIOR
TO CONVEYANCE OF 4.322 ACRE TRACT.

TOWNSHIP ROAD 273 (50')



V.M.S. 3323
V.M.S. 3327

4.322 ACRES

OF WHICH 0.026 ACRE IS WITHIN
THE HIGHWAY RIGHT-OF-WAY
SEE NOTE

LARRY N. ENGLE AND
JOYCE A. ENGLE
REMAINDER OF 198.000 ACRES
O.R. 146, PG. 435

SCOTT A. ROTH AND
GEORGIA F. ROTH
12.479 ACRES
O.R. 1168, PG. 545

LEGEND:

- MAGNETIC NAIL FOUND
 - 5/8 INCH IRON REBAR FOUND
 - 5/8 INCH BY 30 INCH IRON REBAR SET WITH YELLOW I.D. CAP STAMPED "DLZ OHIO INC."
- R/W = RIGHT-OF-WAY
C/L = CENTER-LINE
P.O.B. = POINT OF BEGINNING
O.R. = OFFICIAL RECORD
PG. = PAGE
V.M.S. = VIRGINIA MILITARY SURVEY

OCCUPATION NOTE:

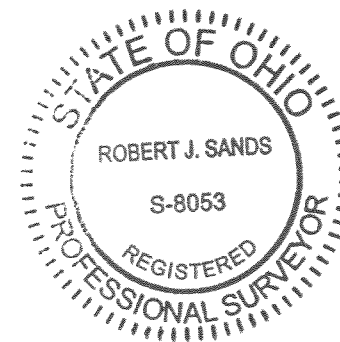
NO EVIDENCE OF OCCUPATION ALONG
BOUNDARY LINES UNLESS OTHERWISE SHOWN

ACCESS MANAGEMENT NOTE:

TOWNSHIP ROAD 273 IS CLASSIFIED AS A LOCAL ROAD.
MINIMUM DRIVE SPACING IS 250'
MINIMUM STOPPING SIGHT DISTANCE IS >495'
ACCESS DRIVE IS EXISTING, NO NEW ACCESS NEEDED)

BASIS FOR BEARINGS:

BEARINGS AND DISTANCES, SHOWN HEREON, ARE
DERIVED FROM GPS OBSERVATIONS BASED ON
GRID NORTH, OHIO STATE PLANE COORDINATE
SYSTEM, NORTH ZONE, NAD83 (2011), WITH THE
LINE COMMON TO VIRGINIA MILITARY SURVEYS
3327 AND 3323, HAVING A BEARING OF
N 84°56'29" E.



CERTIFICATION:

THIS PLAT WAS PREPARED BY DLZ OHIO, INC. AND IS
A TRUE AND ACCURATE REPRESENTATION, TO THE BEST
OF MY KNOWLEDGE AND BELIEF, OF A SURVEY MADE
BY THE SAME IN MAY, 2022.

THIS SURVEY WAS PERFORMED WITHOUT THE BENEFIT
OF A TITLE POLICY; ALL OWNERSHIP SHOWN IS BASED
UPON RECORD DATA ACQUIRED AT THE TIME OF
SURVEY, NO GUARANTEE IS PLACED UPON ACTUAL
OWNERSHIP OF ANY PROPERTY.

EASEMENTS MAY EXIST ON SUBJECT PROPERTY THAT
WOULD BE REVEALED IN A TITLE EXAMINATION.

Robert J. Sands 05/25/22
ROBERT J. SANDS
PROFESSIONAL SURVEYOR NO. 8053
MAY, 2022

DRAWN BY:	DESCRIPTION	REV. NO.	DATE
KSS			5/18/2022

COPYRIGHT 2022 BY:

117 N. Madriver Street • Bellefontaine, OH 43311
(937) 593-7335 • www.dlz.com
Project #2221-2031.00

INDEXED ON MAP
6594

12-13-2022



APPROVED

EDWARDS SURVEYING

110 South Main Street
Urbana, Ohio 43078
(937) 653-6508



LEGAL DESCRIPTION FOR MOBLEY'S 132.141 ACRE TRACT

Being situate in the State of Ohio, County of Logan, Townships of Rushcreek and Jefferson, and being a part of Virginia Military Survey 3327, and being more particularly described as follows:

Beginning for reference at a Mag Nail set at the intersection of the centerline of Township Road 273 (50' right-of-way) and the East line of V.M.S. 3327, also being the West line of V.M.S. 3326, and being at the Northeast corner of a 5.766 acre tract conveyed to John D. & Colleen L. Bodin by deed recorded in Official Record 1226, Page 552, Tract II, and at the Northwest corner of a 9.898 acre tract also conveyed to John D. & Colleen L. Bodin by deed recorded in Official Record 1226, Page 552, Tract I;

thence with the West line of the 9.898 acre tract, the West line of V.M.S. 3326, the East line of V.M.S. 3327, the East line of Bodin's 5.766 acre tract, and with an East line of a 12.479 acre tract conveyed to Scott A. & Georgia F. Roth by deed recorded in Official Record 1168, Page 545, S-4°49'17"-E, 910.49'(feet) to a 5/8" diameter iron bar found at the Southeast corner of Roth's tract and at the **PRINCIPLE PLACE OF BEGINNING** for the tract hereinafter described;

thence continuing with the East line of V.M.S. 3327, the West line of V.M.S. 3326, and the West line of the 9.898 acre tract, S-4°49'17"-E, 383.41'(feet) to a 5/8" diameter iron bar found on the North line of a 7.000 acre tract conveyed to Daniel Michael & Ruth Ellen Lyons by deed recorded in Official Record 1369, Page 194;

thence S-85°39'41"-W, 40.94'(feet) to a 5/8" diameter iron bar found at the Northwest corner of the 7.000 acre tract;

thence with the West line of the 7.000 acre tract, S-6°04'22"-E, 702.30'(feet) to a P.K. Nail found on the centerline of State Route 47 (60' right-of-way), passing for reference a 5/8" diameter iron bar found on the right-of-way line of State Route 47 at 671.49'(feet);

thence with the centerline of State Route 47, S-70°46'44"-W, 1793.12'(feet) to a Mag Nail set at the Southeast corner of a 1.85 acre tract conveyed to Dan Terry by deed recorded in Official Record 1335, Page 350;

thence N-14°06'16"-W, 276.00'(feet) to a point at the Northeast corner of Terry's tract from which a 5/8" square iron bar found bears S-5°57'04"-E, 2.44'(feet), passing for reference a 5/8" diameter iron bar found on the right-of-way line of State Route 47 at 30.12'(feet);

thence with the North line of Terry's tract and with the North line of a 3.846 acre tract conveyed to Daniel R. & Joanie Mudge by deed recorded in Official Record 777, Page 630, and with a South line of a 66.070 acre tract conveyed to Tyler J. & Gabrielle M. Mobley by deed recorded in Official Record 1353, Page 737, which is a part of the herein described tract, S-80°29'36"-W, 720.22'(feet) to a 5/8" diameter iron bar found, passing for reference a 5/8" diameter iron bar found at the Northwest corner of Terry's tract at 256.50'(feet) and an iron bar set at 596.96'(feet);

INDEXED ON MAP
10594

thence with the West line of Mudge's tract, S-9°18'24"-E, 385.35'(feet) to a Mag Nail found on a centerline tangent of State Route 47 (60' right-of-way) passing for reference the right-of-way line of State Route 47 at 353.13'(feet) and a 5/8" diameter iron bar found at 355.26'(feet);

thence with the centerline of State Route 47 and the centerline tangent thereof, S-83°18'43"-W, 941.19'(feet) to a Mag Nail set at the Southeast corner of a 103.809 acre tract conveyed to Jeffrey R. Powell & Tracy A. Powell, Trustees, by deed recorded in Official Record 1279, Page 894, Parcel 1;

thence with the East line of Powell's tract, N-6°19'10"-W, 2629.11'(feet) to an iron bar set on the South line of Watkins Allotment No. 1 as recorded in Plat Cabinet "A", Slide 315, and the North line of V.M.S. 3327, passing for reference an iron bar set on the right-of-way line of State Route 47 at 30.00'(feet);

thence with the South line of said Watkins Allotment, the South line of Donald R. & Nancy Mobley's 120.92 acre tract as recorded in Official Record 361, Page 569, the South line of a 30'(feet) right-of-way easement, and the North line of V.M.S. 3327, N-84°56'20"-E, 1167.53'(feet) to a 5/8" diameter iron bar set the Northwest corner of a 29.678 acre tract conveyed to Tyler J. & Gabrielle M. Mobley by deed recorded in Official Record 1407, Page 4322;

thence S-5°55'20"-E, 1043.89'(feet) to an iron bar set at the Southwest corner of the 29.678 acre tract;

thence N-88°10'11"-E, 1344.09'(feet) to an iron bar set at the Southeast corner of the 29.678 acre tract;;

thence with the East line of the 29.678 acre tract, N-4°11'22"-W, 372.25'(feet) to a 5/8" diameter iron bar found at the Southwest corner of aforementioned Roth's 12.479 acre tract;

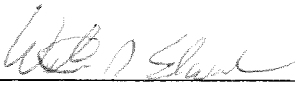
thence with the South line of Roth's tract, S-85°30'27"-E, 983.04'(feet) to the place of beginning.

Containing 132.141 acres, 1.885 acres of which is within the Road right-of-way, 45.731 acres of which are in Rushcreek Township, and 86.410 acres of which are in Jefferson Township, but being subject to the rights of all legal highways and all easements of record.

Being all of a 66.071 acre tract conveyed to Tyler J. & Gabrielle M. Mobley by deed recorded in Official Record 1369, Page 914 and all of a 66.070 acre tract conveyed to Tyler J. & Gabrielle M. Mobley by deed recorded in Official Record 1353, Page 737, of the Logan County Records.

The foregoing description prepared by William D. Edwards, Professional Surveyor No. 7574, December 9, 2022, in accordance with a survey by William D. Edwards, Professional Surveyor No. 7574, August 6, 2019. All iron bars set are 5/8"x30" iron re-bar with a yellow plastic cap stamped "EDWARDS PS 7574". Bearing are based on the centerline of Township Road 273 per an assumed bearing of S-84°56'20"-W.





William D. Edwards, P.S. 7574

INDEXED ON MAP
6594

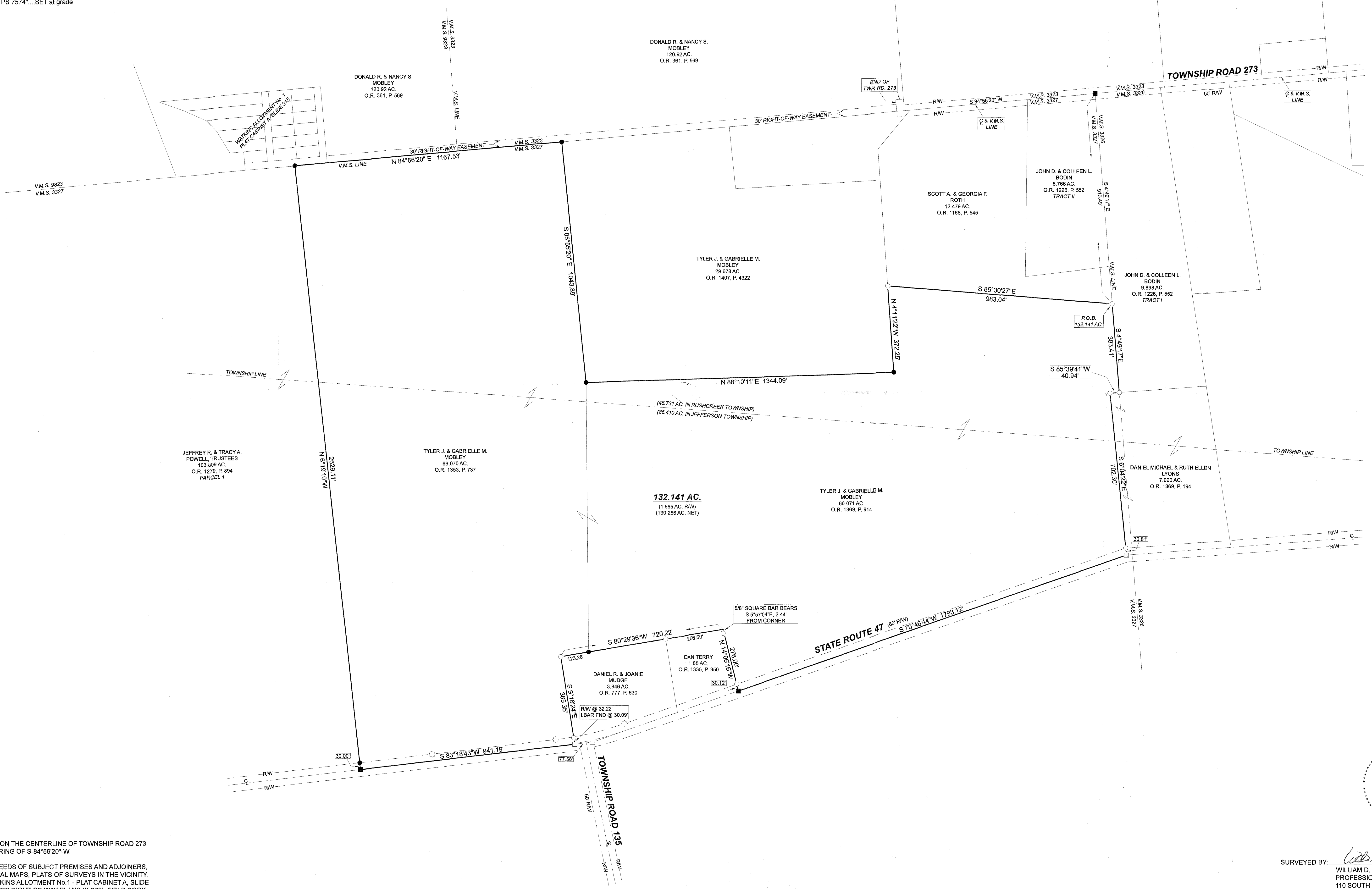
2-13-2022

APPROVED

PLAT OF SURVEY
 JEFFERSON AND RUSHCREEK TOWNSHIPS, LOGAN COUNTY, OHIO
 VIRGINIA MILITARY SURVEY No. 3327

SCALE: 1" = 200'
 DATE: AUGUST 6, 2019
 REV. DATE: DECEMBER 9, 2022

- LEGEND**
- = CONCRETE RIGHT-OF-WAY MONUMENT.....FOUND
 - = 5/8" DIA. IRON BAR.....FOUND
 - ⊠ = PK NAIL.....FOUND
 - = MAG NAIL.....FOUND
 - = MAG NAIL.....SET at grade
 - = 5/8"x30" IRON RE-BAR WITH YELLOW PLASTIC CAP STAMPED "EDWARDS PS 7574".....SET at grade



NOTES:

- BEARINGS ARE BASED ON THE CENTERLINE OF TOWNSHIP ROAD 273 PER AN ASSUMED BEARING OF S-84°56'20"-W.
- REFERENCES USED: DEEDS OF SUBJECT PREMISES AND ADJOINERS, COUNTY TAX AND AERIAL MAPS, PLATS OF SURVEYS IN THE VICINITY, RECORD PLAT OF WATKINS ALLOTMENT No. 1 - PLAT CABINET A, SLIDE 315, TOWNSHIP ROAD 273 RIGHT-OF-WAY PLANS (X-273), FIELD BOOK 699 - PAGES 34-38, STATE ROUTE 47 RIGHT-OF-WAY PLANS.



SURVEYED BY: *William D. Edwards*
 WILLIAM D. EDWARDS
 PROFESSIONAL SURVEYOR No. 7574
 110 SOUTH MAIN STREET
 URBANA, OHIO 43078
 (637)653-6508

INDEXED ON MAP
 6574