

TURNER SURVEY
V.M.S. 3314
RUSHCREEK TOWNSHIP
March 28, 1970

The following described real estate situated in Rushcreek Township, Logan County, Ohio and being part of Virginia Military Survey 3314 and more particularly described as follows:

Beginning at an iron pin in the center of County Highway No.26 at the northwest corner of Leslie E. Mosier's 100.50 acre tract, said pin also being in the north line of said V.M.S. 3314; thence with said Mosier's west line S.5° 25'E. 2749.1 feet to an iron bar; thence S.76° 57'W. 1825.0 feet to an iron bar; thence, parallel to and 208.7 feet east of the east line of Eddie Ross' 108.34 acre tract, N.6° 01'W. 1941.3 feet to an iron pin in the center of said C. H. No.26; thence with the centerline of said road N.65° 32'E. 90.8 feet to an iron bar; thence continuing with said centerline N.48° 15'E. 1725.9 feet to an iron bar; thence continuing with said centerline N.84° 53'E. 352.6 feet to the place of beginning.

Containing 101.83 acres more or less.

The above described tract being part of Quincy Turner's 170.86 acre tract.

INDEXED ON MAP
7445-1D

SEE R-1603 for original plat

DEED 12-6-06 SUMON

Lee Surveying and Mapping Co., Inc.

Land Surveys • Topography • Subdivisions • Construction Layout

117 N. Madriver St.
Bellefontaine OH 43311



Phone: (937) 593-7335
Fax: (937) 593-7444

1975-2005 - 30 YEARS OF EXCELLENCE

**BLACKHOOF, LLC
65.943 ACRES**

Lying in Virginia Military Survey 3314, Rushcreek Township, Logan County, Ohio.

Being all of the Blackhoof, LLC 69.03 acre tract as deeded and described in Official Record 854, Page 139, Tract No. III of the Logan County Records of Deeds and being more particularly described as follows:

Commencing on a 1/2 inch iron pipe found on the west line of Virginia Military Survey 3314, on the center-line of County Highway 26 at center-line Station 64+06.33 (Logan County Engineer's Plan X-26, Page 3 of 5, Dated February, 1988).

THENCE, with the center-line of County Highway 26 (60 feet wide), the following four courses:

N 30°-10'-59"E, a distance of 100.00 feet to a "6 penny" nail found.

N 41°-35'-04"E, a distance of 99.02 feet to a railroad spike set.

N 56°-25'-57"E, a distance of 2305.30 feet to a 5/8 inch iron rod found in a monument box at Station 89+10.48.

N 66°-24'-34"E, a distance of 234.01 feet to a MAG nail set at the TRUE POINT OF BEGINNING.

THENCE, with the center-line of County Highway 26 (variable widths),
N 66°-24'-34"E, a distance of 220.00 feet to a railroad spike found.

THENCE, with the lines of the Blackhoof, LLC 101.83 acre tract (O.R. 854, Pg. 144, Tract II), the following two courses:

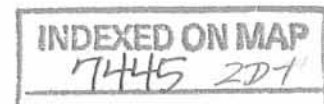
S 5°-09'-03"E, a distance of 1941.29 feet to a 8 inch wood post found, passing a 5/8 inch iron rod set at 26.35 feet.

N 77°-49'-59"E, a distance of 1824.74 feet to a 3/4 inch iron rod found, passing a 5/8 inch iron rod set at 2.20 feet.

THENCE, with the west lines of the William W. Stoltz 100.50 acre tract (Vol. 362, Pg. 412, Tract II) and the Amanda J. Prinkey 22.75 acre tract (Vol. 371, Pg. 1, Tract I), S 4°-51'-23"E, a distance of 1691.48 feet to a stone found.

THENCE, with a north line of the Blackhoof, LLC 133.95 acre tract (O.R. 854, Pg. 144, Tract I), S 85°-31'-38"W, a distance of 1287.52 feet to a stone found.

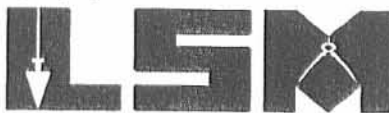
THENCE, with the lines of the Blackhoof, LLC 103.82 acre tract (O.R. 854, Pg. 139, Tract No. II), the following three courses:



Lee Surveying and Mapping Co., Inc.

Land Surveys • Topography • Subdivisions • Construction Layout

117 N. Madriver St.
Bellefontaine OH 43311



Phone: (937) 593-7335
Fax: (937) 593-7444

1975-2005 - 30 YEARS OF EXCELLENCE

N 6°-05'-21"W, a distance of 929.14 feet to a stone found.

S 84°-51'-00"W, a distance of 708.43 feet to a 5/8 inch iron rod set.

N 5°-09'-03"W, a distance of 2396.00 feet to the point of beginning, passing a 5/8 inch iron rod set at 2364.38 feet.

Containing 65.943 acres, of which 0.138 acre is within the highway right-of-way.

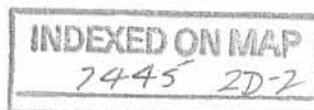
The basis for bearings is the south line of Virginia Military Survey 3314, being S 85°-45'-00"W, and all other bearings are from angles and distances measured in a field survey by Lee Surveying and Mapping Co., Inc. on December 1, 2006.

Description prepared by:

A handwritten signature in black ink, appearing to read 'Jeffrey I. Lee', is written over a faint circular stamp.

Jeffrey I. Lee
Professional Surveyor 6359
December 4, 2006

3882116



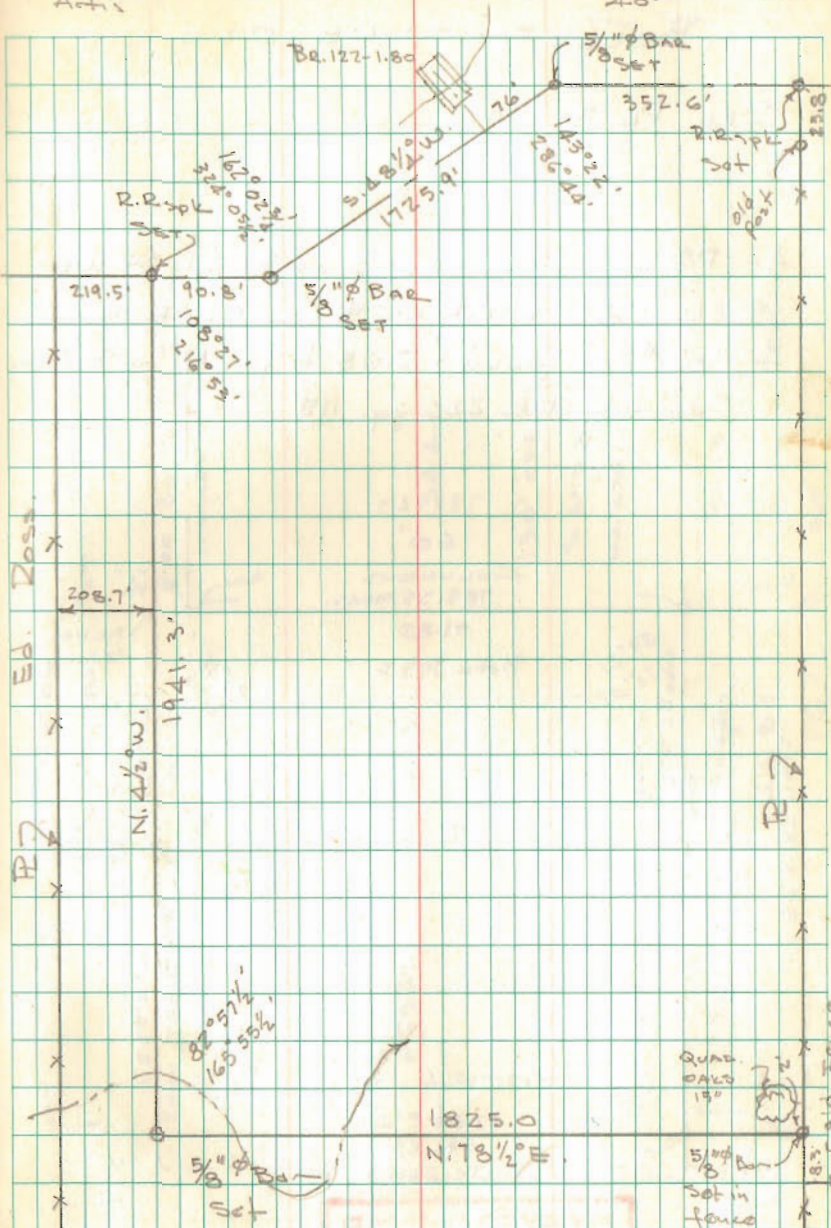
TURNER SURVEY

Dodson
Act's

3/28/70

3/21/70
A.O.

11



INDEXED ON MAP
7445

1777.3
81.0
26.7
1825.0

1825