

Received 10-10-91 OK C.R

LESLIE H. GEESLIN
REGISTERED SURVEYOR NO 5248
P. O. BOX 274
RUSHSYLVANIA, OHIO 43347

TELEPHONE: (513) 468-2793

HELMUTH SURVEY

October 9, 1991

The following described real estate situated in the State of Ohio, County of Logan, Township of Rushcreek, being part of Virginia Military Survey 9953 and more particularly described as follows:

Beginning at a cap and nail set in the centerline of U. S. Route 68 that is S. 24° 45' 00" W. 351.58 feet from Station 322+21.80 as established from Plan L-18

Thence with said centerline S. 24° 45' 00" W. 150.32 feet to a cap and nail set at a northeast corner of John L. Roof's 147.14 acre tract as described in D. B. Vol. 319 Page 502.

Thence with a north line of said 147.14 acre tract S.83°03'30"W. 485.71 feet to a 5/8 inch iron bar set.

Thence N. 2° 38' 29" W. 346.31 feet to a 5/8 inch iron bar set.

Thence S. 74° 58' 22" E. 581.35 feet to the place of beginning, passing a 5/8 inch iron bar set at 545.42 feet.

Containing 2.914 acres more or less of which 0.108 acre is in the right-of-way of U. S. Route 68.

Bearings are based on an assumed bearing for the centerline of U. S. Route 68 as established from Plan L-18 in this field survey.

The above described 2.914 acre tract being in the southeast corner of Emil Helmuth, etux's 66 acre tract as described in O. R. Vol. 75 Page 75.

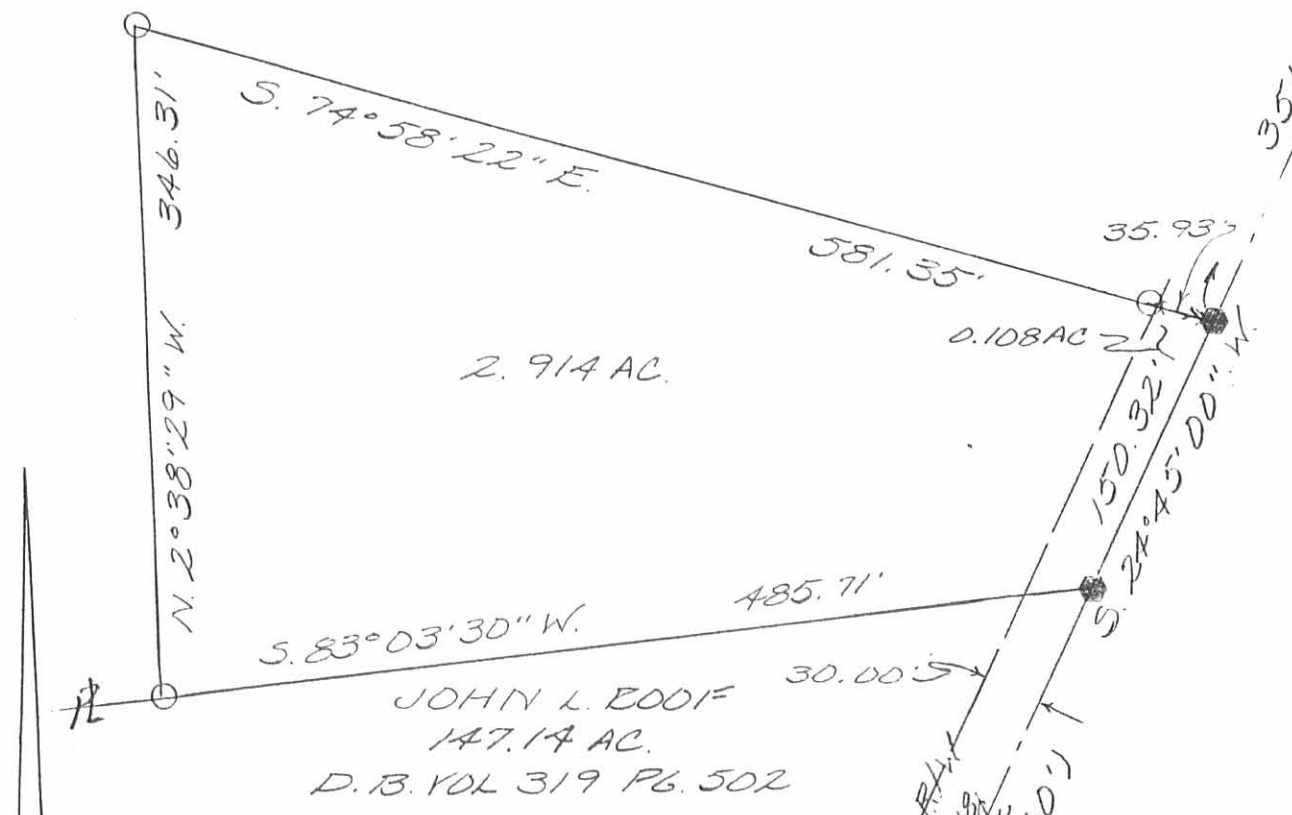


Leslie H. Geeslin

INDEXED ON MAP
8462 1D

EMIL HELMUTH, ET UX
 66 AC
 DE VOL 75 PAGE 75

STA. 322+21.80



SURVEY OF A 2.914
 ACCE TRACT 'N VIRGINIA
 MILITARY SURVEY 9953,
 RUSHCREEK TOWNSHIP,
 LOGAN COUNTY, OHIO
 EMIL HELMUTH
 OCTOBER 9, 1991

- LEGEND:
- = P.K. NAIL FOUND
 - = CAP & NAIL SET
 - = 5/8 INCH IRON BAR SET

SCALE: 1" = 100'



BEARING BASIS:
 ASSUMED BEARING
 ESTABLISHED FROM PLANK 18
 U.S. ROUTE 68 (60')



Leslie H. Geeslin
 LESLIE H. GEESLIN
 RUSHSVLVANIA, OH
 (513) 468-2793

INDEXED ON MAP
 8462 1P

Walker Elliott Survey

[Random 5' south]

Start with new wire fence at
West end of south line.

Produced this fence line

N 82 E

Marked pt in Eagle Pike for
SE \angle of tract - Wit:

Stake west - 17'

" NW - 17'

Rem. south line 20.92

8462

Sept. 17 - 1915

N 71 1/2 W

- along \odot Eagle pike
N 24 3/4 E10.57 drove bolt in \odot pike in
W. line Windham

- with Windham W. line

786 N 7 1/2 W

788 - stone with X at NE \angle
Windham

- with N. line Windham

N 8 3/2 E

3.90 bolt - @ pike

33.80

- with @ pike

N 17 - E

14.00 bolt by Windham Mail by

9.03 bolt - (trial N. line)

14.00
4.97
9.03

Cse West line

N 6 3/4 W

Meas 24.50

North line (dividing line)
[Trial line]

N 82 E

33.77 - bolt @ pike at

9.03 E. line

8462

Corrected line

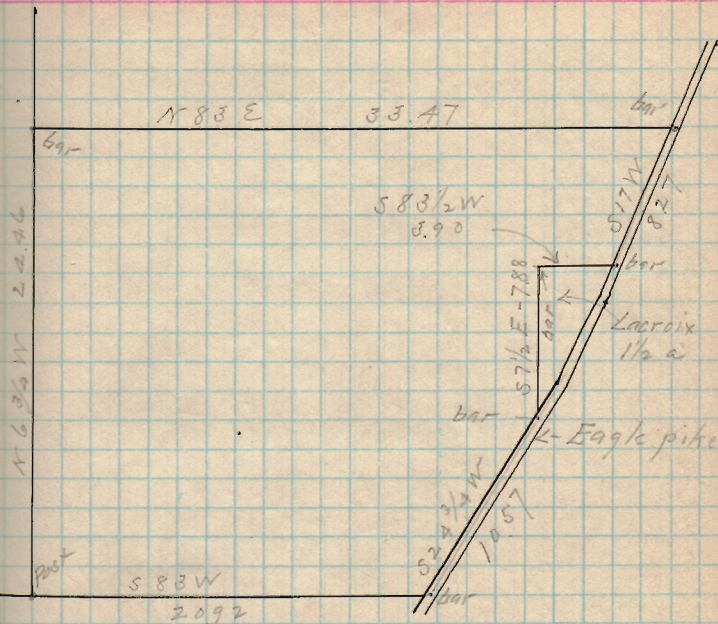
Turned 90° north from
south line, & thence 90°
E & W along north trial line.
This makes the north line
parallel to south line.

This makes west line 24.57
instead of 24.50

Cse N. line N 83 - E

33.52 - @ pike

- along Eagle pike S $16\frac{3}{4}$ W
8.39



Walker Elliott survey as finally
corrected to make 66 $\frac{1}{2}$ acres.

8462

10-25-2021



APPROVED



ARCHITECTURE • ENGINEERING • PLANNING
SURVEYING • CONSTRUCTION SERVICES

INNOVATIVE IDEAS
EXCEPTIONAL DESIGN
UNMATCHED CLIENT SERVICE

HELMUTH 1.219 ACRES

Situate in the State of Ohio, Logan County, Rushcreek Township and lying in Virginia Military Survey 9953, and being out of the 63.086 acres as conveyed to Emil R. Helmuth and Edna Helmuth, Trustees by deed of record in Official Record 1391, Page 2316 (all records referenced herein refer to the Logan County Records of Deeds) and being more particularly described as follows:

COMMENCE at a concrete right-of-way monument found on the westerly right-of-way of U.S. Highway 68, 35.00' left of Station 318+00 (Logan County S.H. 226 Sec-D R/W Plan L-18).

THENCE, South 64°-52'-45" East, a distance of 35.00 feet to a point on the center-line of said U.S. Highway at Station 318+00 of said R/W Plan;

THENCE, North 25°-07'-15" East, a distance of 69.30 feet, with said center-line, to a point at the **TRUE POINT OF BEGINNING**, said point being a southeast corner to said 63.086 acre tract and the northeast corner of that 2.914 acre tract as conveyed to Marvin E. Helmuth and Nancy Lee Helmuth, Trustees by deed of record in Official Record 1392, Page 3257;

THENCE, with lines common to said 63.086 acre and 2.914 acre tracts; North 74°-35'-44" West, a distance of 581.13 feet to a 5/8 inch iron rebar found, passing a 5/8 inch iron rebar found at a distance of 37.16 feet; and South 02°-23'-14" East, a distance of 346.86 feet to a 5/8 inch iron rebar found, being a corner common to said 63.086 acre and 2.914 acre tracts and being on a northerly line of that 31.177 acre tract as conveyed to Lucas D. Gingerich and Rebecca B. Gingerich by deed of record in Official Record 418, Page 96;

THENCE, South 83°-23'-33" West, a distance of 50.14 feet, with a line common to said 63.086 acre and 31.177 acre tracts, to a 5/8 inch iron rebar set (I.D. cap stamped "DLZ OHIO INC.");

THENCE, with new division lines through said 63.086 acre tract; North 02°-23'-14" West, a distance of 409.34 feet to a 5/8 inch iron rebar set (I.D. cap stamped "DLZ OHIO INC.");

INDEXED ON MAP
DLZ



INNOVATIVE IDEAS
EXCEPTIONAL DESIGN
UNMATCHED CLIENT SERVICE

North 87°-36'-46" East, a distance of 46.79 feet to a 5/8 inch iron rebar set (I.D. cap stamped "DLZ OHIO INC."); and

South 74°-35'-44" East, a distance of 611.57 feet, passing a 5/8 inch iron rebar set (I.D. cap stamped "DLZ OHIO INC.") at a distance of 576.25 feet, to a point on the center-line of said U.S. Highway;

THENCE, South 25°-07'-15" West, a distance of 55.80 feet with said center-line, to the **TRUE POINT OF BEGINNING**.

Containing 1.219 acres, more or less, of which 0.045 acre is within the highway right-of-way.

The bearings in the above description are based on the grid bearing of N 25°-07'-15" E for the center-line of U.S. Highway 68 as determined by a GPS network of field observations performed in September 2021 and are based upon the Ohio State Plane Coordinate System, North Zone, NAD83 (2011).

All rebar set are 5/8 inch in diameter and 30 inches in length, with a yellow cap stamped "DLZ OHIO INC."

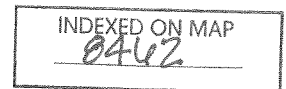
I certify that this description is based upon a survey conducted under my direct supervision in September 2021 and that it and the information contained herein are true and correct to the best of my knowledge.



DLZ Ohio, Inc.

Samuel L. Stiltner 9/30/2021
Samuel L. Stiltner
Professional Surveyor No. 8364

2021-2137.00



10-25-2021



APPROVED



INNOVATIVE IDEAS
EXCEPTIONAL DESIGN
UNMATCHED CLIENT SERVICE

HELMUTH 13.045 ACRES

Situate in the State of Ohio, Logan County, Rushcreek Township and lying in Virginia Military Survey 9953, and being out of the 63.086 acres and all of the 90 square yards as conveyed to Emil R. Helmuth and Edna Helmuth, Trustees by deed of record in Official Record 1391, Page 2316 (all records referenced herein refer to the Logan County Records of Deeds) and being more particularly described as follows:

COMMENCE at a concrete right-of-way monument found on the westerly right-of-way of U.S. Highway 68, 35.00' left of Station 318+00 (Logan County S.H. 226 Sec-D R/W Plan L-18).

THENCE, South 64°-52'-45" East, a distance of 35.00 feet to a point on the center-line of said U.S. Highway at Station 318+00 of said R/W Plan;

THENCE, North 25°-07'-15" East, a distance of 125.10 feet, with said center-line, to a point at the **TRUE POINT OF BEGINNING**;

THENCE, with new division lines through said 63.086 acre tract;

North 74°-35'-44" West, a distance of 611.57 feet, passing a 5/8 inch iron rebar set (I.D. cap stamped "DLZ OHIO INC.") at a distance of 35.32 feet, to a 5/8 inch iron rebar set (I.D. cap stamped "DLZ OHIO INC.");

North 05°-30'-57" West, a distance of 604.61 feet to a 5/8 inch iron rebar set (I.D. cap stamped "DLZ OHIO INC."); and

North 83°-06'-54" East, a distance of 814.48 feet to a 5/8 inch iron rebar set (I.D. cap stamped "DLZ OHIO INC.") on a line common to said 63.086 acre tract and that 1.51 acre tract as conveyed to Jesse J. Richards by deed of record in Official Record 771, Page 119;

THENCE, South 06°-30'-48" East, a distance of 291.11 feet, with a line common to said 63.086 acre and 1.51 acre tracts, to a 5/8 inch iron rebar set (I.D. cap stamped "DLZ OHIO INC."), being a corner common to said 90 square yards tract and 1.51 acre tract and being on an easterly line of said 63.086 acre tract;

THENCE, South 75°-27'-39" East, a distance of 29.30 feet, with a line common to said 90 square yards and 1.51 acre tract, to a 5/8 inch iron rebar

INDEXED ON MAP
8462



INNOVATIVE IDEAS
EXCEPTIONAL DESIGN
UNMATCHED CLIENT SERVICE

set (I.D. cap stamped "DLZ OHIO INC.") on the original westerly right of way line of said U.S. Highway;

THENCE, South 22°-10'-54" West, a distance of 56.95 feet, with said right-of-way line, to a point, referenced by a 5/8 inch iron rebar set (I.D. cap stamped "DLZ OHIO INC.") bearing North 06°-30'-48" W, a distance of 21.17 feet:

THENCE, South 06°-30'-48" East, a distance of 68.29 feet, through said right-of-way, to a point on said center-line of U.S. Highway;

THENCE, South 25°-07'-15" West, a distance of 491.19 feet with said center-line, to the **TRUE POINT OF BEGINNING**.

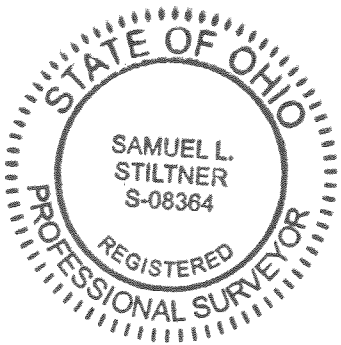
Containing 13.045 acres, more or less, of which 0.471 acre is within the highway right-of-way.

The bearings in the above description are based on the grid bearing of N 25°-07'-15" E for the center-line of U.S. Highway 68 as determined by a GPS network of field observations performed in September 2021 and are based upon the Ohio State Plane Coordinate System, North Zone, NAD83 (2011).

All rebar set are 5/8 inch in diameter and 30 inches in length, with a yellow cap stamped "DLZ OHIO INC."

I certify that this description is based upon a survey conducted under my direct supervision in September 2021 and that it and the information contained herein are true and correct to the best of my knowledge.

DLZ Ohio, Inc.



Samuel L. Stiltner 9/30/2021

Samuel L. Stiltner
Professional Surveyor No. 8364

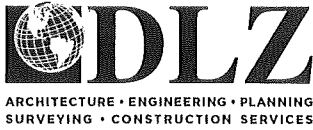
2021-2137.00



10-25-2021



APPROVED



INNOVATIVE IDEAS
EXCEPTIONAL DESIGN
UNMATCHED CLIENT SERVICE

HELMUTH 48.598 ACRES

Situate in the State of Ohio, Logan County, Rushcreek Township and lying in Virginia Military Survey 9953, and being out of the 63.086 acres as conveyed to Emil R. Helmuth and Edna Helmuth, Trustees by deed of record in Official Record 1391, Page 2316 (all records referenced herein refer to the Logan County Records of Deeds) and being more particularly described as follows:

COMMENCE at a concrete right-of-way monument found on the westerly right-of-way of U.S. Highway 68, 35.00' left of Station 318+00 (Logan County S.H. 226 Sec-D R/W Plan L-18).

THENCE, South 64°-52'-45" East, a distance of 35.00 feet to a point on the center-line of said R/W Plan;

THENCE, North 25°-07'-15" East, a distance of 125.10 feet, with said center-line, to a point;

THENCE, North 74°-35'-44" West, a distance of 611.57 feet, passing a 5/8 inch iron rebar set (I.D. cap stamped "DLZ OHIO INC.") at a distance of 35.32 feet, to a 5/8 inch iron rebar set (I.D. cap stamped "DLZ OHIO INC.") at the **TRUE POINT OF BEGINNING**;

Thence, with new division lines through said 63.086 acre tract;

South 87°-36'-46" West, a distance of 46.79 feet to a 5/8 inch iron rebar set (I.D. cap stamped "DLZ OHIO INC.");

South 02°-23'-14" East, a distance of 409.34 feet to a 5/8 inch iron rebar set (I.D. cap stamped "DLZ OHIO INC.") on a line common to said 63.086 acre tract and that 31.177 acre tract as conveyed to Lucas D. Gingerich and Rebecca B. Gingerich by deed of record in Official Record 418, Page 96;

THENCE, South 83°-23'-33" West, a distance of 842.27 feet, with said common line, to a 5/8 inch iron rebar set (I.D. cap stamped "DLZ OHIO INC.") on a corner common to said 63.086 acre and 31.177 acre tract;

THENCE, N 06°-08'-06" W, a distance of 1601.34 feet, with a line common to said 63.086 acre and 31.177 acre tracts and that 25.65 acre tract as conveyed to Chester M. Mullet and Miriam V. Mullet, as Trustees by deed

INDEXED ON MAP
0462

of record in Official Record 797, Page 718, to a 5/8 inch iron rebar found at a corner common to that 38.618 acre tract as conveyed to Mark A. Kibler and Melissa J. Kibler by deed of record in Official Record 1323, Page 736;

THENCE, North 83°-06'-54" East, a distance of 2208.66 feet, with line common to said 63.086 acre and 36.618 acre tracts, to a point on the center-line of said Highway, passing a 5/8 inch iron rebar found at a distance of 2176.64 feet;

THENCE, South 17°-04'-45" W, a distance of 545.67 feet, with said center-line, to a point, corner common to said 63.086 acre tract and that 1.51 acre tract as conveyed to Jesse J. Richards by deed of record in Official Record 771, Page 119;

THENCE, with lines common to said 63.086 acre and 1.51 acre tracts; South 83°-36'-54" West, a distance of 257.41 feet to a 5/8 inch iron rebar set (I.D. cap stamped "DLZ OHIO INC."), passing a 5/8 inch iron rebar set (I.D. cap stamped "DLZ OHIO INC.") at a distance of 54.72 feet; and

South 06°-30'-48" East, a distance of 100.05 feet a 5/8 inch iron rebar set (I.D. cap stamped "DLZ OHIO INC.");

THENCE, with new division lines through said 63.086 acre tract:

South 83°-06'-54" West, a distance of 814.48 feet to a 5/8 inch iron rebar set (I.D. cap stamped "DLZ OHIO INC."); and

South 05°-30'-57" East, a distance of 604.61 feet to the **TRUE POINT OF BEGINNING**.

Containing 48.598 acres, more or less, of which 0.611 acre is within the highway right-of-way.

The bearings in the above description are based on the grid bearing of N 25°-07'-15" E for the center-line of U.S. Highway 68 as determined by a GPS network of field observations performed in September 2021 and are based upon the Ohio State Plane Coordinate System, North Zone, NAD83 (2011).

All rebar set are 5/8 inch in diameter and 30 inches in length, with a yellow cap stamped "DLZ OHIO INC."



INNOVATIVE IDEAS
EXCEPTIONAL DESIGN
UNMATCHED CLIENT SERVICE

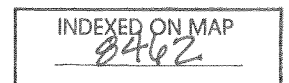
I certify that this description is based upon a survey conducted under my direct supervision in September 2021 and that it and the information contained herein are true and correct to the best of my knowledge.

DLZ Ohio, Inc.

Samuel L. Stiltner
Professional Surveyor No. 8364

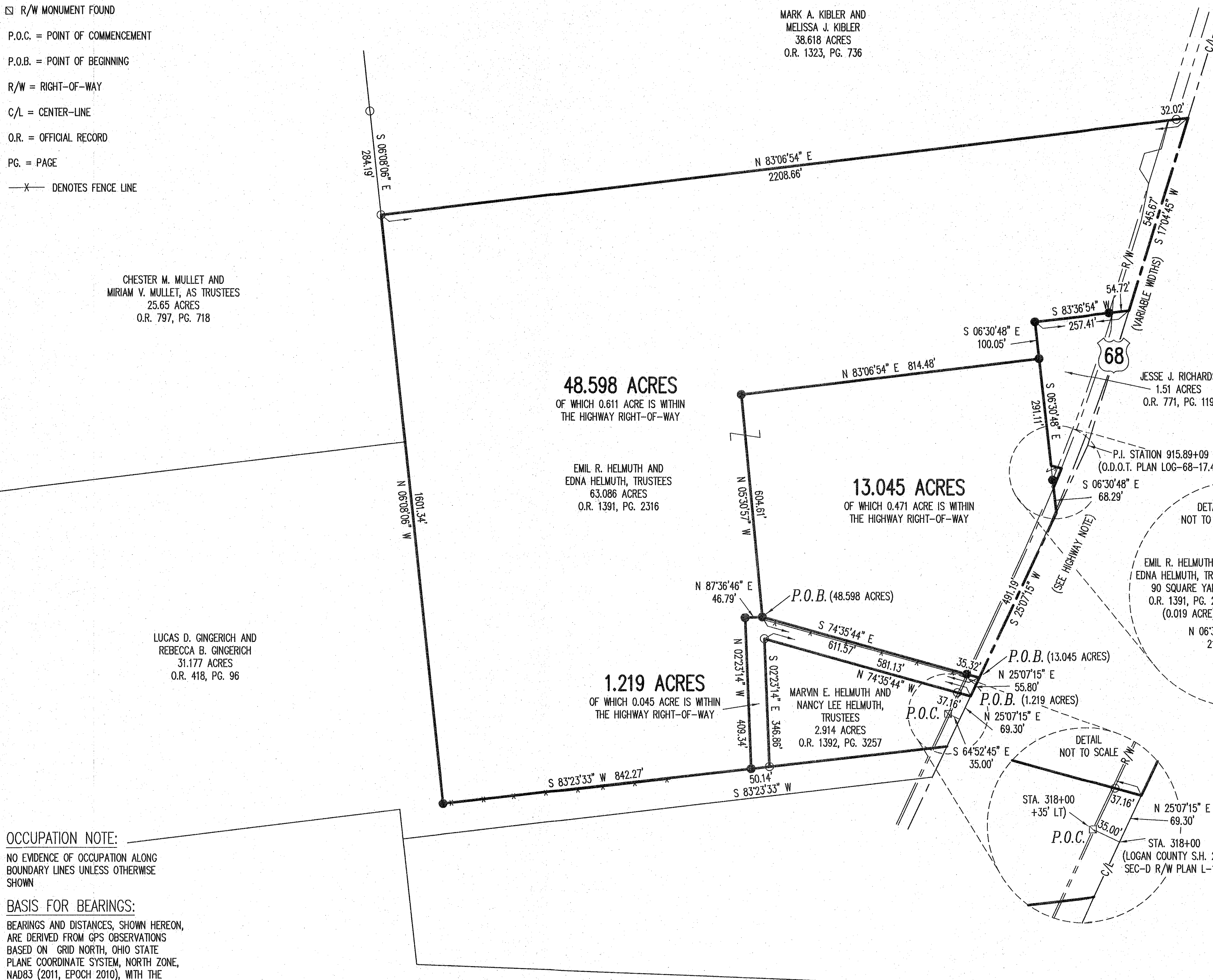
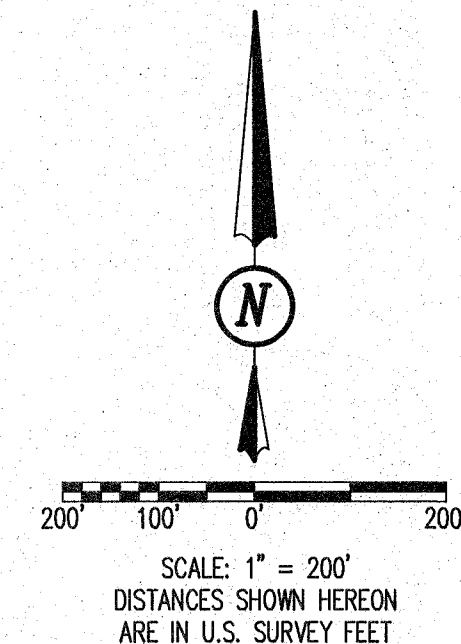


2021-2137.00



LEGEND:

- 5/8 INCH IRON REBAR FOUND
- 5/8 INCH BY 30 INCH IRON REBAR SET WITH ORANGE I.D. CAP STAMPED "DLZ OHIO INC."
- ☒ R/W MONUMENT FOUND
- P.O.C. = POINT OF COMMENCEMENT
- P.O.B. = POINT OF BEGINNING
- R/W = RIGHT-OF-WAY
- C/L = CENTER-LINE
- O.R. = OFFICIAL RECORD
- PG. = PAGE
- X— DENOTES FENCE LINE



DEED & SURVEY REFERENCE:
 DEED REFERENCES ARE SHOWN HEREON.

LOGAN COUNTY ENGINEER'S MAP ROOM FILES:
 8462, 3731, 9117, 6209 AND 2375
 ROAD FILES: L-018, L-018A AND
 LOG_68_14.95_19.96

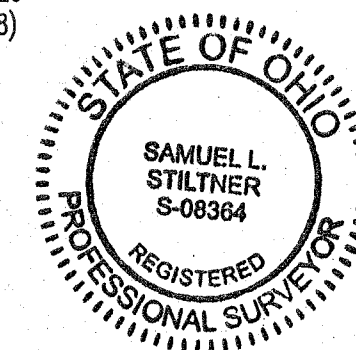
HIGHWAY NOTE:
 NO CENTER-LINE POINTS WERE SET BECAUSE OF
 HAZARDOUS CONDITIONS

CERTIFICATION:
 THIS PLAT WAS PREPARED BY DLZ OHIO, INC. AND
 THIS IS A TRUE AND ACCURATE REPRESENTATION, TO
 THE BEST OF MY KNOWLEDGE AND BELIEF, OF A
 SURVEY MADE BY THE SAME IN SEPTEMBER, 2021.

THIS SURVEY WAS PERFORMED WITHOUT THE BENEFIT
 OF A TITLE POLICY; ALL OWNERSHIP SHOWN IS BASED
 UPON RECORD DATA ACQUIRED AT THE TIME OF
 SURVEY; NO GUARANTEE IS PLACED UPON ACTUAL
 OWNERSHIP OF ANY PROPERTY.


EASEMENTS MAY EXIST ON SUBJECT PROPERTY THAT
 WOULD BE REVEALED IN A TITLE EXAMINATION.

Samuel L. Stiltner 9/30/2021
 SAMUEL L. STILTNER
 PROFESSIONAL SURVEYOR NO. 8364
 SEPTEMBER, 2021



OCCUPATION NOTE:
 NO EVIDENCE OF OCCUPATION ALONG
 BOUNDARY LINES UNLESS OTHERWISE
 SHOWN

BASIS FOR BEARINGS:
 BEARINGS AND DISTANCES, SHOWN HEREON,
 ARE DERIVED FROM GPS OBSERVATIONS
 BASED ON GRID NORTH, OHIO STATE
 PLANE COORDINATE SYSTEM, NORTH ZONE,
 NAD83 (2011, EPOCH 2010), WITH THE
 CENTER-LINE OF U.S. HWY 68, HAVING A
 BEARING OF N 25°07'15" E.

COPYRIGHT 2021 BY:

 117 N. Madriver Street • Bellefontaine, OH 43311
 (937) 593-7335 • www.dlz.com
 Project #2121-2137.00

SURVEY OF THREE TRACTS
 VIRGINIA MILITARY SURVEY 9953
 RUSHCREEK TOWNSHIP
 LOGAN COUNTY, OHIO

DRAWN BY:	DESCRIPTION	REV. NO.	DATE
KSS			9/30/2021