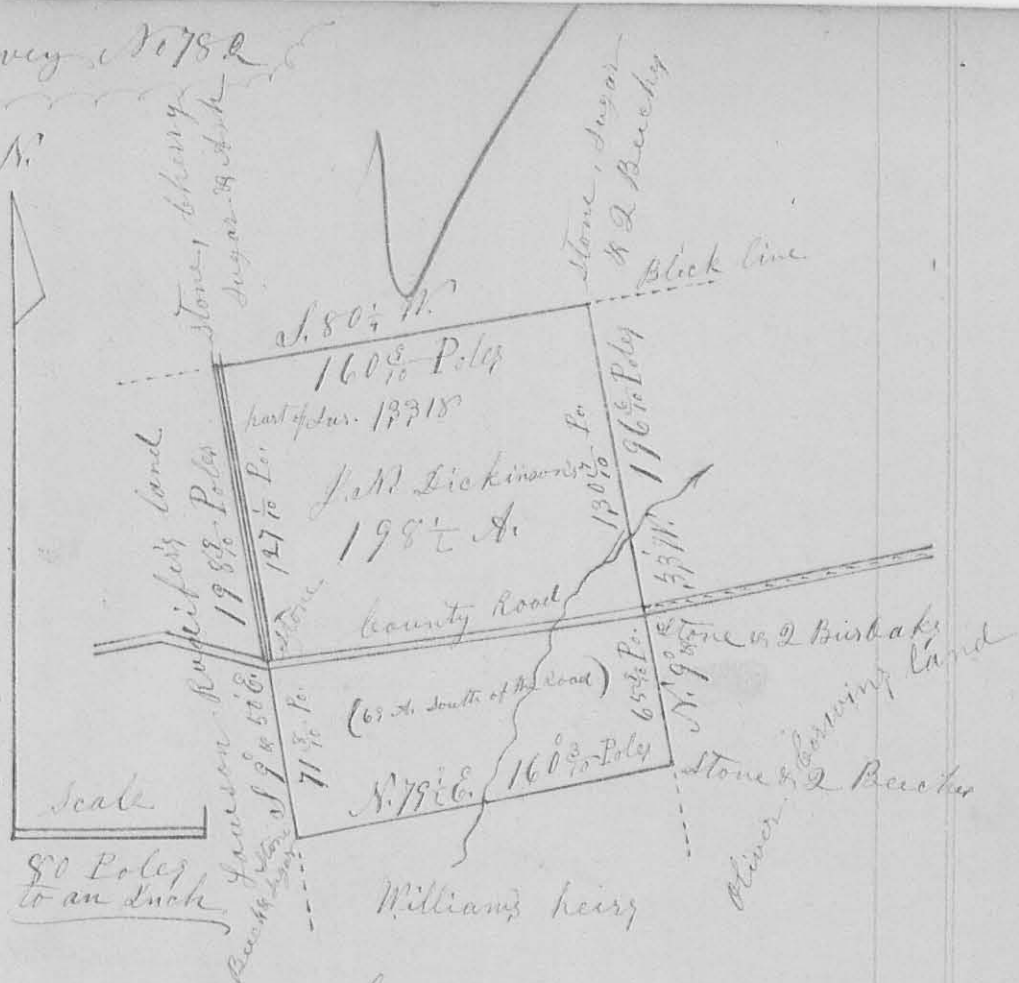


8633

Magnetic Meridian



Surveyors Office Bellefontaine O.
 November 11th A.D. 1858

The above plat is a representation of 198 1/2 Acres of land in Rushcreek & Boker creek Townships of Logan Co. Ohio, being a part of Virginia Military Survey No. 18318, in the name of Hezekiah Starbuck; As Surveyed by me, H. C. Moore, the County Surveyor of said County of Logan, on the 2^d, 3^d & 4th days of November A. D. 1858, at the Request of Joseph N. Dickinson, of Boker creek Township of said County, for the purpose of establishing the lines and corners thereof and ascertaining the number of acres contained therein; which I did in the following manner: to wit: Beginning at a Stone, which I planted in the North line of said Survey, at Lawson Rudifer's N.E. corner (in said survey) from which I marked a Sugar tree (thus "X") 4th Sec. Dis bearing S. 12 1/2 W.

333
12 links, a Cherry 6 In. Dir. S. 14° W. $16\frac{1}{2}$ links
and an Ash 12 In. Dir. S. $5\frac{3}{4}$ E. $25\frac{1}{2}$ links
distant: Run thence S. 9° & $52'$ E. with
said Rudiger's East line, $198\frac{8}{10}$ Poles,
(passing 4 old line trees in the first 50
rod, and a Stone in the centre of a
County Road at $127\frac{1}{10}$ Poles,) to a stone
which I planted in said Rudiger's E. line
at the N.W. corner of Mr. William's heirs,
from which I marked a Beech 20 In. Dir.
bearing S. 80° W. 6 links; & a Sugar 17 In.
Dir. S. $7\frac{1}{2}$ E. 28 links distant, Thence N. 79° E.
 $160\frac{3}{10}$ Poles, (crossing Bokes Creek at 80 poles)
to a stone which I planted in Oliver
Corwin's West line, from which I marked
a Beech 10 In. Dir. bearing N. 70° E. $12\frac{1}{2}$ links,
and a Beech 12 In. Dir. S. 7° W. 89 links;
Thence N. 9° & $33'$ W. $65\frac{9}{10}$ Poles, (passing the
centre of a Black Walnut tree 4 feet in Dir.
at $7\frac{48}{100}$ chains) to a stone which I planted
in the middle of a County Road, at said
Oliver Corwin's N.W. corner, from which
I marked a Bur Oak 23 In. Dir. S. 70° W. 16 links,
& a Bur Oak 8 In. Dir. S. $1\frac{1}{2}$ W. $50\frac{1}{2}$ links,
Thence with the same bearing, (N. 9° & $33'$ W.)
crossing Bokes Creek at $21\frac{1}{2}$ poles, (or $95\frac{1}{4}$ poles
from the S.E. corner,) $130\frac{7}{10}$ Poles, (or $196\frac{3}{10}$ poles
from the S.E. corner) to a stone which
I planted in the N. line of said survey,
from which I marked a Sugar tree 28 In.
Dir. S. 47° W. 11 links, a Beech 13 In. Dir.
S. 74° W. 13 links, & a Beech 12 In. Dir. N.
 80° E. 14 links; Thence S. $80\frac{1}{4}$ W. with the
N. line of the said Survey $160\frac{9}{10}$ Poles to
the place of beginning, containing

One Hundred & Ninety eight acres, and ^{3/4} one
half of an acre = (198 ³/₄ acres) - - - -

All of the afore named corner stones are
marked with a notch in the top, & the
witness trees thus 'X' cut in the side
facing the ~~the~~ corner, - - - -

Done in presence of

Joseph N. Dickinson

Lawson Rudiger

Oliver Corwin

Christopher Bline

& James Jordan

Christopher Bline

James Jordan

Chain Men: - - -

I hereby certify that the fore-
going plat & Report are correct - - -

Henry C. Moore,

County Surveyor of Logan Co., W. Va.