

REC'D 7-15-96 smy olv

H-1812

T.C. Hubbell Surveying, Inc.



3755 TR 25
Ada, Ohio 45810
419-634-9516

DESCRIPTION

Job # 1812
July 7, 1996
Revised: July 11, 1996

Being a parcel of land situated in Virginia Military Survey 9955 Rushcreek Township, Logan County, Ohio, being all of the Gerald W. Reese, etux's, 11.960 acre, 8.970 acre and 7.36 acre (28.29 acres total) tracts as described in O.R. Vol. 274, pg. 529 in the Logan County Recorders Office and being further described as follows:

Beginning at a railroad spike set on the north line of V.M.S. 9955 and the centerline of T.R. 40 (60' in width), this point being N.80°-00'-00" E., 2442.14 feet from a 5/8" iron pin found at the intersection of the centerline of T.R. 40 with the centerline of T.R. 110, this railroad spike set also being the northwest corner of the Gerald W. Reese etux's 28.29 acre tract as described in O.R. Vol. 274, pg. 529:

(1) Thence N. 80°-00'-00" E., along the north line of V.M.S. 9955 and the centerline of T.R. 40, for 615.68 feet to a 1/2" iron pin set over a 3/4" iron pipe found 8" below the surface of said road-

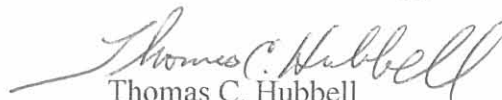
(2) Thence S. 10°-05'-26" E., along the west line of David A. Routt's 11.96 acre tract, (D.B. Vol. 332, pg. 785), for 2012.28 feet to a 1/2" by 30" iron pin with plasticap stamped "T.C.H. 5044" set, passing at 30.00 feet a 1/2" by 30" iron pin with cap set-

(3) Thence S. 80°-15'-12" W., along the north line of J. D. Amerline's 51 acre tract, (D.B. Vol. 347, pg. 127), for 619.49 feet to a 1" iron pin found-

(4) Thence N. 09°-58'-56" W., along the east lines of Stephen Myers 25.28 acre tract, (D.B. Vol. 350, pg. 819), and the Betty J. Kennedy's 60.57 acre tract, (O.R. Vol. 277, pg. 541), for 2009.54 feet to the point of beginning, passing at 1979.54 feet a 1/2" by 30" iron pin with cap set.

Containing in all 28.510 acres of land, 0.424 acres lying within the right of way of T.R. 40, subject however to all legal easements and rights of way.

Note; This plat and description prepared from an actual field survey, all bearings refer to the centerline of T.R. 40 and the north line of V.M.S. 9955 as being N. 80°-00'-00" E., said bearing being referred to in Gerald W. Reese, etux's 28.29 acre tract O.R. Vol.274, pg. 529.


Thomas C. Hubbell
Reg. Surveyor #5044



INDEXED ON MAP
9052 1D

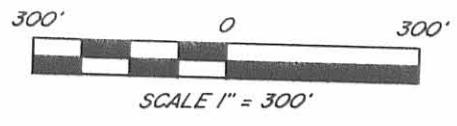
H-1812

T.C. Hubbell Surveying, Inc.



3755 TR 25
Ada, Ohio 45810
419-634-9516

PLAT OF A SURVEY IN V.M.S. 9955, RUSHCREEK TOWNSHIP, LOGAN COUNTY, OHIO



SURVEY MADE 7-5-96

DAVID A. ROUTT
D.B. VOL. 332, PG. 785

GERALD W. REESE, ETUX
PRIOR DEED
O.R. VOL. 274, PG. 529

DRAWING AND DESCRIPTION
REVISED: JULY 11, 1996

BEARINGS REFERENCED TO
T.R. 40 AS
N. 80°-00'-00" E. FROM
O.R. VOL. 274, PG. 529

"A" = 1/2" x 30" REBAR 1/W PLASTICAP
MARKED T.C.H. 5044
"B" = 1/2" REBAR SET OVER 3/4"
IRON PIPE FOUND 8" BELOW SURFACE.



BETTY J. KENNEDY
O.R. VOL. 277, PG. 541
60.57 ACRES

STEPHEN MYERS
VOL. 350, PG. 819
25.28 ACRES

SURVEY REFERENCE
INDEXED ON MAP (5423)

GERALD W. REESE, ETUX
O.R. VOL. 274, PG. 529
28.29 ACRES (DEED)

J.D. AMERLINE
D.B. VOL. 347, PG. 127
51 ACRES



Thomas C. Hubbell
THOMAS C. HUBBELL
R.L.S. # 5044

INDEXED ON MAP
9052 1P

REC'D 9-26-05 SMY OK

Lee Surveying and Mapping Co., Inc.

Land Surveys • Topography • Subdivisions • Construction Layout

117 N. Madriver St.
Bellefontaine OH 43311



Phone: (937) 593-7335
Fax: (937) 593-7444

1975 - 2005 - 30 YEARS OF EXCELLENCE KLINE AND HOUSER 5.002 ACRES

Lying in Virginia Military Survey 9955, Rushcreek Township, Logan County, Ohio.

Being out of the H. Kevin Kline and Ellenna M. Houser 28.510 acre tract as deeded and described in Official Record 762, Page 911 of the Logan County Records of Deeds and being more particularly described as follows:

Beginning at a 3/4 inch bolt found at the intersection of center-lines of Township Road 110, and Township Road 40 (60 feet wide).

THENCE, with the north line of Virginia Military Survey 9955 and the center-line of Township Road 40, N 79°-59'-18"E, a distance of 2442.01 feet to a railroad spike found at THE TRUE POINT OF BEGINNING.

THENCE, with the center-line of Township Road 40, N 80°-00'-00"E, a distance of 264.60 feet to a MAG nail set.

THENCE, S 9°-59'-19"E, a distance of 823.50 feet to a 5/8 inch iron rod set, passing a 5/8 inch iron rod set at 30.00 feet.

THENCE, S 80°-00'-00"W, a distance of 264.60 feet to a 5/8 inch iron rod set.

THENCE, with the east line of the Betty J. Kennedy 60.57 acre tract (O.R. 277, Pg. 541), N 9°-59'-19"W, a distance of 823.50 feet to the point of beginning.

Containing 5.002 acres of which 0.182 acre is within the highway right-of-way.

The basis for bearings is the center-line Township Road 40, being N 80°-00'-00"E, and all other bearings are from angles and distances measured in a field survey by Lee Surveying and Mapping Co., Inc. on September 19, 2005.



ORIGINAL STAMP IN GREEN

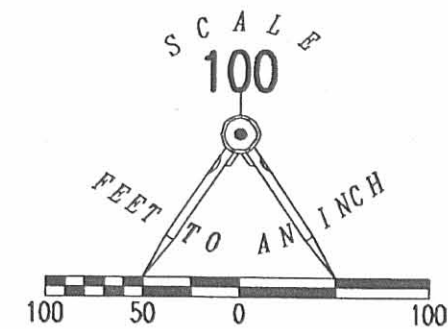
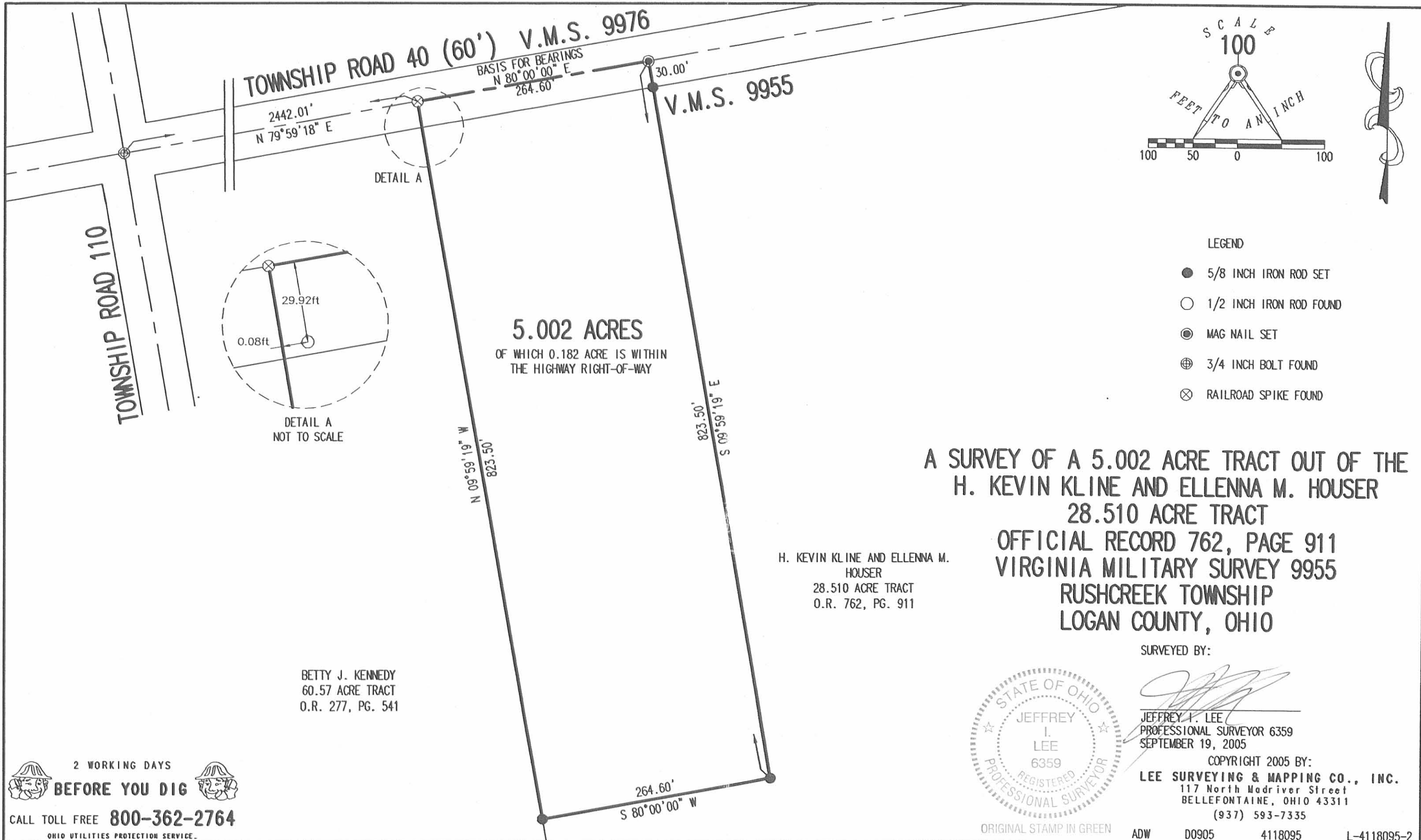
Description prepared by:

Jeffrey I. Lee
Jeffrey I. Lee
Professional Surveyor 6359
September 22, 2005

L-4118095

INDEXED ON MAP
9052 2D

REC'D 9-26-05 SMJ OK



LEGEND

- 5/8 INCH IRON ROD SET
- 1/2 INCH IRON ROD FOUND
- ⊙ MAG NAIL SET
- ⊕ 3/4 INCH BOLT FOUND
- ⊗ RAILROAD SPIKE FOUND

5.002 ACRES
 OF WHICH 0.182 ACRE IS WITHIN
 THE HIGHWAY RIGHT-OF-WAY

A SURVEY OF A 5.002 ACRE TRACT OUT OF THE
 H. KEVIN KLINE AND ELLENNA M. HOUSER
 28.510 ACRE TRACT
 OFFICIAL RECORD 762, PAGE 911
 VIRGINIA MILITARY SURVEY 9955
 RUSHCREEK TOWNSHIP
 LOGAN COUNTY, OHIO

H. KEVIN KLINE AND ELLENNA M.
 HOUSER
 28.510 ACRE TRACT
 O.R. 762, PG. 911

SURVEYED BY:

[Signature]
 JEFFREY I. LEE
 PROFESSIONAL SURVEYOR 6359
 SEPTEMBER 19, 2005



COPYRIGHT 2005 BY:
LEE SURVEYING & MAPPING CO., INC.
 117 North Madriver Street
 BELLEFONTAINE, OHIO 43311
 (937) 593-7335

BETTY J. KENNEDY
 60.57 ACRE TRACT
 O.R. 277, PG. 541

2 WORKING DAYS
BEFORE YOU DIG
 CALL TOLL FREE **800-362-2764**
 OHIO UTILITIES PROTECTION SERVICE.

ORIGINAL STAMP IN GREEN ADW D0905 4118095 L-4118095-2

INDEXED ON MAP
 9052 2P

APPROVED **Lee Surveying and Mapping Co., Inc.**

11-26-13

Land Surveys • Topography • Subdivisions • Construction Layout

117 N. Madriver St.
Bellefontaine OH 43311



Phone: (937) 593-7335
Fax: (937) 593-7444
surveys@lsminc.us

**PORTER, TRUSTEE
1.696 ACRES**

Lying in Virginia Military Survey 9955, Rushcreek Township, Logan County, Ohio.

Being out of the Tamera I. Saylor, fka Tamera I. Porter, Trustee 60.57 acre tract as deeded and described in Official Record 1121, Page 910 of the Logan County Records of Deeds and being more particularly described as follows:

Commencing on a 3/4 inch iron bolt found on the north line of Virginia Military Survey 9955 on the intersection of the center-lines of Township Road 110 and Township Road 40.

THENCE, with the north line of Virginia Military Survey 9955 and the center-line of Township Road 40 (60 feet wide), N 80°-00'-00"E, a distance of 1458.01 feet to a MAG nail set at the TRUE POINT OF BEGINNING.

THENCE, with the north line of Virginia Military Survey 9955 and the center-line of Township Road 40, N 80°-00'-00"E, a distance of 228.04 feet to a MAG nail set.

THENCE, S 05°-33'-58"E, a distance of 304.53 feet to a 5/8 inch iron rod set, passing a 5/8 inch iron rod set at 30.09 feet.

THENCE, S 84°-50'-14"W, a distance of 275.18 feet to a 5/8 inch iron rod set.

THENCE, N 03°-57'-28"E, a distance of 288.95 feet to the point of beginning, passing a 5/8 inch iron rod set at 258.04 feet.

Containing 1.696 acres, of which 0.159 acre is within the highway right-of-way.

Property is subject to any and all previous easements and rights-of-way of record.

The basis for bearings is the north line of Virginia Military Survey 9955, being N 80°-00'-00"E, and all other bearings are from angles and distances measured in a field survey by Lee Surveying and Mapping Co., Inc. on November 19, 2013

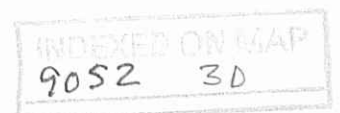


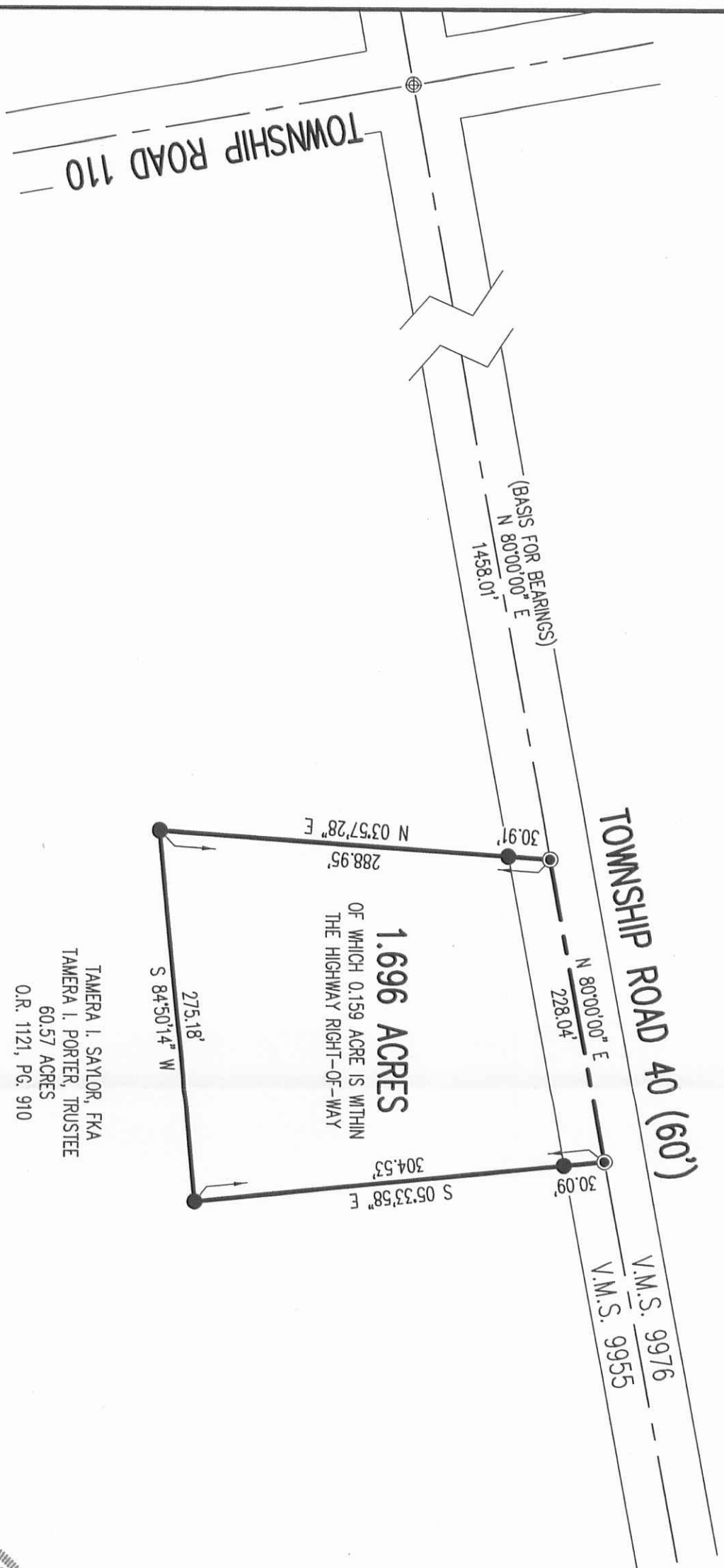
ORIGINAL STAMP IN GREEN

Description prepared by:

William K. Bruce
Professional Surveyor 7437
November 19, 2013

56451113

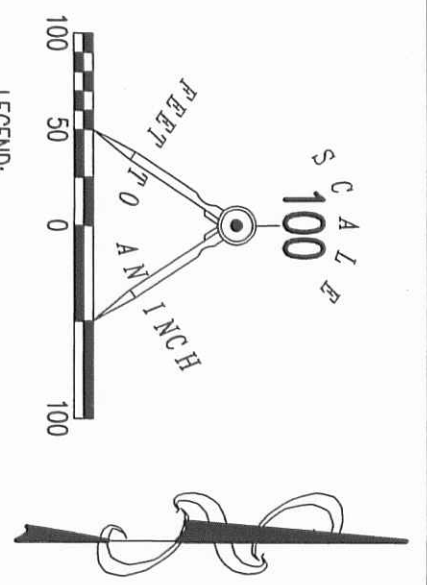




TAMERA I. SAYLOR, FKA
 TAMERA I. PORTER, TRUSTEE
 60.57 ACRES
 O.R. 1121, PG. 910

1.696 ACRES
 OF WHICH 0.159 ACRE IS WITHIN
 THE HIGHWAY RIGHT-OF-WAY

2 WORKING DAYS
BEFORE YOU DIG
 CALL TOLL FREE **800-362-2764**
 OHIO UTILITIES PROTECTION SERVICE



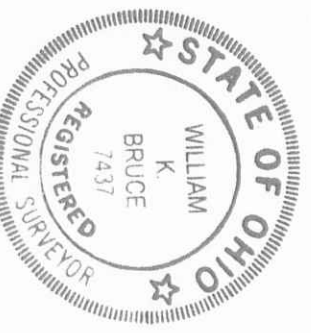
**SURVEY OF 1.696 ACRES OUT OF THE
 TAMERA I. SAYLOR, FKA
 TAMERA I. PORTER, TRUSTEE
 60.57 ACRE TRACT
 OFFICIAL RECORD 1121, PAGE 910
 VIRGINIA MILITARY SURVEY 9955
 RUSHCREEK TOWNSHIP
 LOGAN COUNTY, OHIO**

SURVEYED BY:

William K. Bruce
 WILLIAM K. BRUCE
 PROFESSIONAL SURVEYOR 7437
 NOVEMBER 19, 2013

COPYRIGHT 2013 BY:
LEE SURVEYING & MAPPING CO., INC.
 117 North Madriver Street
 BELLEFONTAINE, OHIO 43311
 (937) 593-7335
 WWW.LSMINC.US
 surveys@lsminc.us

ORIGINAL STAMP IN GREEN



KSS D1113 56451113 L-5645-3

INDEXED ON MAP
 9052 3P