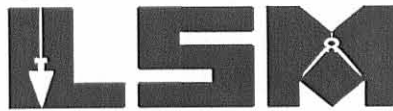


REC'D 12-27-01 JMM/OK

Lee Surveying and Mapping Co., Inc.

Land Surveys • Topography • Subdivisions • Construction Layout

117 N. Madriver St.
Bellefontaine OH 43311



Phone: (937) 593-7335
Fax: (937) 593-7444

KENNEDY 5.500 ACRES

Lying in Virginia Military Survey 9936, Rushcreek Township, Logan County, Ohio.

Being out of the John Richard Kennedy and Bonnie L. Kennedy 50.0 acre tract as deeded and described in Official Record 352, Page 469, Tract I, of the Logan County Records of Deeds and being more particularly described as follows:

Beginning at a 3/4 inch iron pipe with monument cover found on the south line of Virginia Military Survey 9936 at the intersection of the center-lines of County Highway 50 and County Highway 12.

THENCE, with the center-line of County Highway 12 (48 feet wide), N 6°-30'-00" W, a distance of 3224.10 feet to a MAG nail set at the TRUE POINT OF BEGINNING.

THENCE, with the center-line of County Highway 12, N 6°-30'-00" W, a distance of 226.31 feet to a MAG nail set.

THENCE, N 85°-01'-53" E, a distance of 1059.02 feet to a 5/8 inch iron rod set, passing a 5/8 inch iron rod set at 26.00 feet.

THENCE, S 6°-30'-00" E, a distance of 226.31 feet to a 5/8 inch iron rod set.

THENCE, S 85°-01'-53" W, a distance of 1059.02 feet to the point of beginning, passing a 5/8 inch iron rod set at 1035.02 feet.

Containing 5.500 acres, of which 0.125 acre is within the highway right-of-way.

The basis for bearings is the center-line of County Highway 12, being N 6°-30'-00" W, and all other bearings are from angles and distances measured in a field survey by Lee Surveying and Mapping Co., Inc. on December 6, 2001.

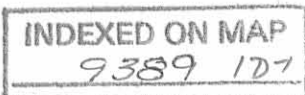
Description prepared by:

Jeffrey I. Lee
Professional Surveyor 6359
December 9, 2001



ORIGINAL STAMP IN GREEN

L-3280



REC'D 12-27-01 SMJ OK
Lee Surveying and Mapping Co., Inc.

Land Surveys • Topography • Subdivisions • Construction Layout

117 N. Madriver St.
Bellefontaine OH 43311



Phone: (937) 593-7335
Fax: (937) 593-7444

**KENNEDY
44.669 ACRES**

Lying in Virginia Military Survey 9936, Rushcreek Township, Logan County, Ohio.

Being out of the John Richard Kennedy and Bonnie L. Kennedy 50.0 acre tract as deeded and described in Official Record 352, Page 469, Tract I, of the Logan County Records of Deeds and being more particularly described as follows:

Beginning at a 3/4 inch iron pipe with monument cover found on the south line of Virginia Military Survey 9936 at the intersection of the center-lines of County Highway 50 and County Highway 12.

THENCE, with the center-line of County Highway 12 (48 feet wide), N 6°-30'-00" W, a distance of 2648.19 feet to a railroad spike set at the TRUE POINT OF BEGINNING.

THENCE, with the center-line of County Highway 12, N 6°-30'-00" W, a distance of 575.91 feet to a MAG nail set.

THENCE, N 85°-01'-53" E, a distance of 1059.02 feet to a 5/8 inch iron rod set, passing a 5/8 inch iron rod set at 24.00 feet.

THENCE, N 6°-30'-00" W, a distance of 226.31 feet to a 5/8 inch iron rod set.

THENCE, S 85°-01'-53" W, a distance of 1059.02 feet to a MAG nail set, passing a 5/8 inch iron rod set at 1033.02 feet.

THENCE, with the center-line of County Highway 12, N 6°-30'-00" W, a distance of 513.51 feet to a railroad spike set.

THENCE, with the south line of the Gilbert A. Kinney 44.85 acre tract (O.R. 484, Pg. 632, Tract Eight), N 83°-04'-28" E, a distance of 1659.64 feet to a 5/8 inch iron rod set, passing a 5/8 inch iron rod set at 24.00 feet.

THENCE, with the west line of the John Richard Kennedy 15.0 acre tract (O.R. 352, Pg. 469, Tract II), and the west line of the Doris Elberta Skinner, successor trustee, 94.33 acre tract (O.R. 476, Pg. 881, Tract I), S 6°-37'-12" E, a distance of 1315.70 feet to a 5/8 inch iron rod set.

THENCE, with the north line of the John Richard Kennedy 5.64 acre tract (O.R. 352, Pg. 469, Tract III), S 83°-04'-28" W, a distance of 1662.40 feet to the point of beginning, passing a 5/8 inch iron rod set at 1638.40 feet.

Containing 44.669 acres, of which 0.600 acre is within the highway right-of-way.

The basis for bearings is the center-line of County Highway 12, being N 6°-30'-00" W, and all other bearings are from angles and distances measured in a field survey by Lee Surveying and Mapping Co., Inc. on December 6, 2001.

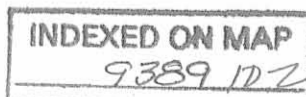
Description prepared by:

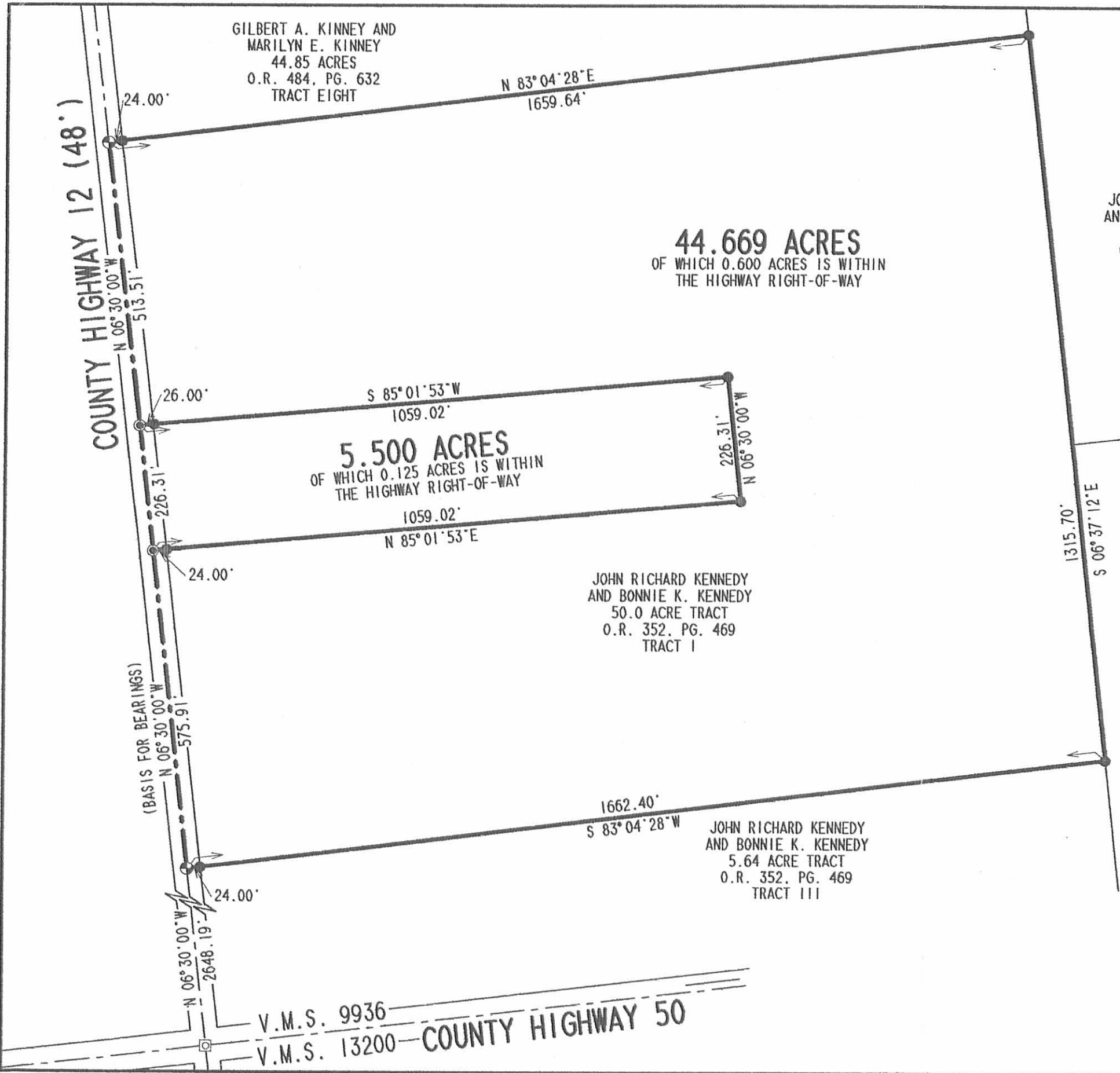


ORIGINAL STAMP IN GREEN

[Handwritten Signature]
Jeffrey I. Lee
Professional Surveyor 6359
December 9, 2001

L-3280





GILBERT A. KINNEY AND
MARILYN E. KINNEY
44.85 ACRES
O.R. 484, PG. 632
TRACT EIGHT

44.669 ACRES
OF WHICH 0.600 ACRES IS WITHIN
THE HIGHWAY RIGHT-OF-WAY

5.500 ACRES
OF WHICH 0.125 ACRES IS WITHIN
THE HIGHWAY RIGHT-OF-WAY

JOHN RICHARD KENNEDY
AND BONNIE K. KENNEDY
50.0 ACRE TRACT
O.R. 352, PG. 469
TRACT I

JOHN RICHARD KENNEDY
AND BONNIE K. KENNEDY
5.64 ACRE TRACT
O.R. 352, PG. 469
TRACT III

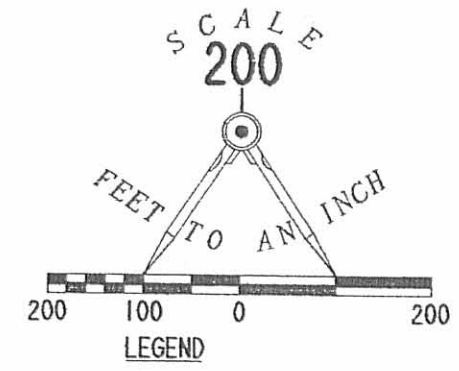
JOHN RICHARD KENNEDY
AND BONNIE K. KENNEDY
15.0 ACRE TRACT
O.R. 352, PG. 469
TRACT II

DORIS ELBERTA SKINNER, SUCCESSOR
TRUSTEE OF THE FRANCIS CECIL SKINNER
TRUST DATED AUGUST 2d, 1996
TRUST A AND TRUST B
94.33 ACRES
O.R. 476, PG. 881, TRACT I

**SURVEY OF TWO TRACTS OUT OF THE
JOHN RICHARD KENNEDY AND BONNIE L. KENNEDY
50.0 ACRE TRACT
OFFICIAL RECORD 352, PAGE 469, TRACT I
VIRGINIA MILITARY SURVEY 9936
RUSHCREEK TOWNSHIP
LOGAN COUNTY, OHIO**



ORIGINAL STAMP IN GREEN



- LEGEND**
- 5/8 INCH IRON ROD SET
 - ⊕ RAILROAD SPIKE SET
 - ⊙ MAG NAIL SET
 - ⊠ 3/4 INCH IRON PIPE WITH MONUMENT COVER FOUND

SURVEYED BY:

Jeffrey I. Lee
JEFFREY I. LEE
PROFESSIONAL SURVEYOR 6359
DECEMBER 6, 2001

COPYRIGHT 2001 BY:
LEE SURVEYING & MAPPING CO., INC.
117 North Madriver Street
BELLEFONTAINE, OHIO 43311
(937) 593-7335

D 406 RKENEDY3

L-3280-3

INDEXED ON MAP
93891P