

Lee Surveying and Mapping Co., Inc.

Land Surveys • Topography • Subdivisions • Construction Layout

117 N. Madriver St.
Bellefontaine OH 43311



Phone: (937) 593-7335
Fax: (937) 593-7444

O'BRIEN
3.898 ACRES

Lying in Virginia Military Survey 9912 - 13318, Rushcreek Township, Logan County, Ohio.

Being out of the James O'Brien, Jr., and Elinor D. O'Brien original 131 acre tract as deeded and described in Volume 381, Page 78, of the Logan County Records of Deeds and more particularly described as follows:

Beginning at a 1 inch iron rod found in a monument box on the center-line of County Highway 20 (50 feet wide) at the southwest corner of Virginia Military Survey 9912 - 13318.

THENCE, with the west line of Virginia Military Survey 9912 - 13318 and the east line of the Bradley H. Linkinhoker 2.00 acre tract (O.R. 520, Pg. 613), N 11°-35'-22"W, a distance of 451.15 feet to a 5/8 inch iron rod set, passing a 5/8 inch iron rod set at 25.00 feet.

THENCE, N 79°-29'-33"E, a distance of 464.29 feet to a point, referenced by a 5/8 inch iron rod set, S 62°-36'-20"E, a distance of 15.83 feet.

THENCE, with the center-line of a ditch, S 11°-40'-25"W, a distance of 243.55 feet to a point, referenced by a 5/8 inch iron rod set, N 77°-15'-57"W, a distance of 12.80 feet.

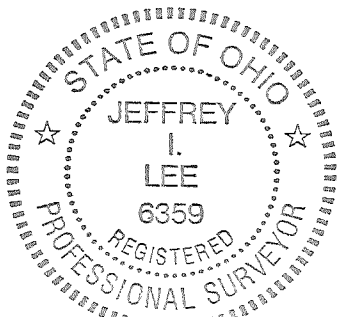
THENCE, with the center-line of a ditch, S 10°48'-09"W, a distance of 138.04 feet to a point, referenced by a 5/8 inch iron rod set, N 87°-36'-02"W, a distance of 11.88 feet.

THENCE, with the center-line of a ditch, S 2°-32'-45"E, a distance of 83.02 feet to a railroad spike set.

THENCE, with the south line of Virginia Military Survey 9912 - 13318 and the center-line of County Highway 20, S 77°-59'-31"W, a distance of 323.00 feet to the point of beginning.

Containing 3.898 acres, of which 0.186 acre is within the Highway right-of-way.

The basis for bearings is the south line of Virginia Military Survey 9912-13318, being S 77°-59'-31"W, and all other bearings are from angles and distances measured in a field survey by Lee Surveying and Mapping Co., Inc. on July 14, 2003



ORIGINAL STAMP IN GREEN

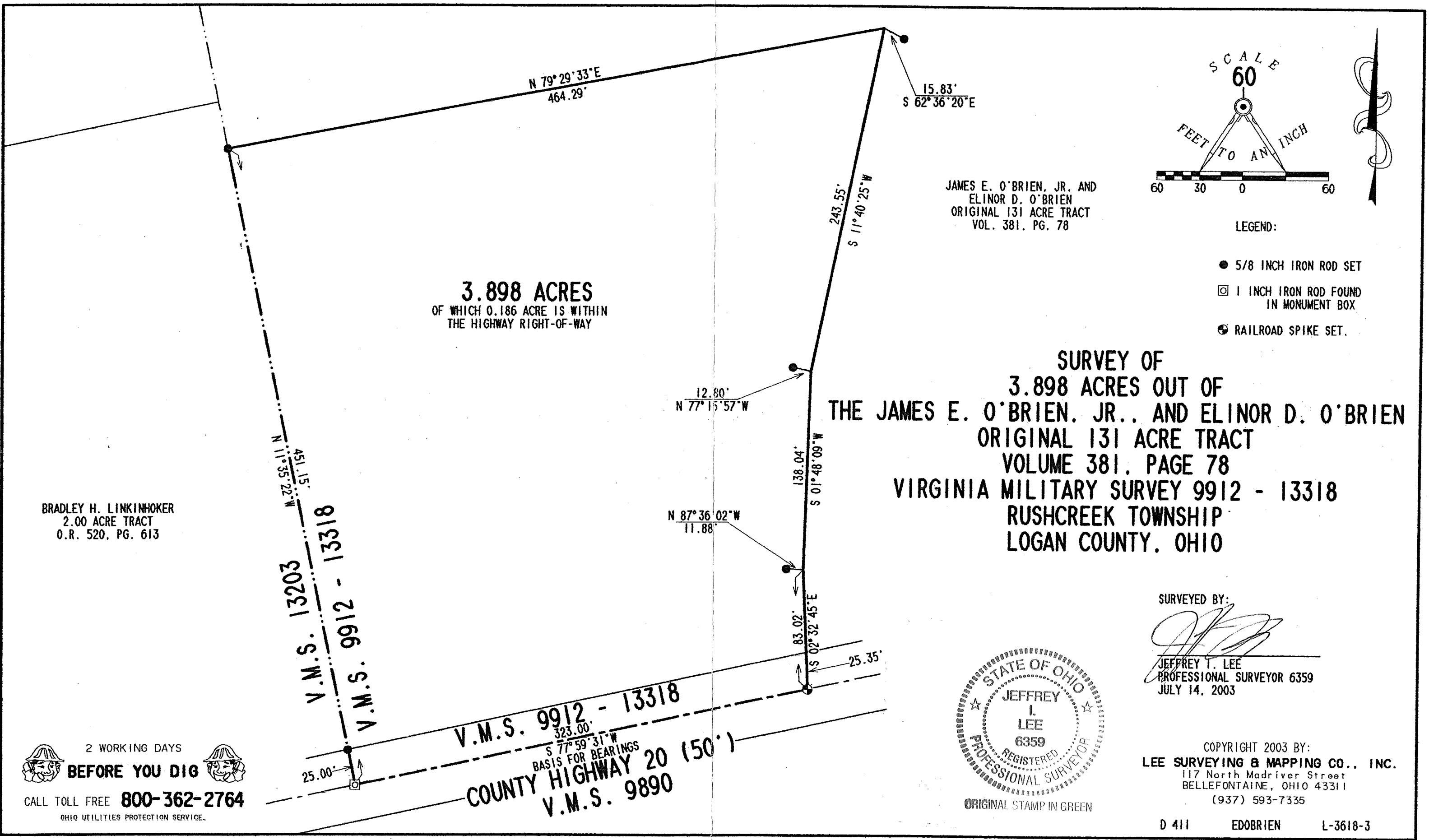
Description prepared by:

Jeffrey I. Lee
Jeffrey I. Lee
Professional Surveyor 6359
July 21, 2003

L-3618

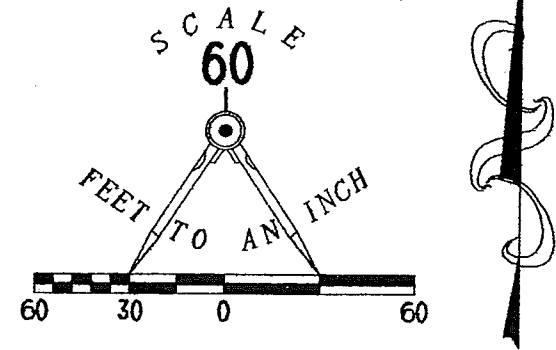


REC'D 7-23-03 SMY/OL



3.898 ACRES
 OF WHICH 0.186 ACRE IS WITHIN
 THE HIGHWAY RIGHT-OF-WAY

JAMES E. O'BRIEN, JR. AND
 ELINOR D. O'BRIEN
 ORIGINAL 131 ACRE TRACT
 VOL. 381, PG. 78



- LEGEND:
- 5/8 INCH IRON ROD SET
 - ☐ 1 INCH IRON ROD FOUND IN MONUMENT BOX
 - ⊙ RAILROAD SPIKE SET.

SURVEY OF
3.898 ACRES OUT OF
THE JAMES E. O'BRIEN, JR., AND ELINOR D. O'BRIEN
ORIGINAL 131 ACRE TRACT
VOLUME 381, PAGE 78
VIRGINIA MILITARY SURVEY 9912 - 13318
RUSHCREEK TOWNSHIP
LOGAN COUNTY, OHIO

BRADLEY H. LINKINHOKER
 2.00 ACRE TRACT
 O.R. 520, PG. 613

SURVEYED BY:

 JEFFREY T. LEE
 PROFESSIONAL SURVEYOR 6359
 JULY 14, 2003



COPYRIGHT 2003 BY:
LEE SURVEYING & MAPPING CO., INC.
 117 North Madriver Street
 BELLEFONTAINE, OHIO 43311
 (937) 593-7335

2 WORKING DAYS
BEFORE YOU DIG
 CALL TOLL FREE **800-362-2764**
 OHIO UTILITIES PROTECTION SERVICE.

V.M.S. 9912 - 13318
323.00'
S 77° 59' 31\"/>

INDEXED ON MAP
 9444 1P

D 411 EDOBRIEN L-3618-3