

Lee Surveying and Mapping Co., Inc.

11-29-12



Land Surveys • Topography • Subdivisions • Construction Layout

117 N. Madriver St.
Bellefontaine OH 43311



Phone: (937) 593-7335
Fax: (937) 593-7444
surveys@lsminc.us

SHAW 82.630 ACRES

Lying in Virginia Military Survey 9954, Rushcreek Township, Logan County, Ohio.

Being all of the Audra I. Shaw 32 acre tract, 21.9 acre tract and 30.5 acre tract as deeded and described in Official Record 1088, Pg. 144 (Tracts I, II, and III) of the Logan County Records of Deeds and being more particularly described as follows:

Commencing at a 1 inch iron rod found on the north line of Virginia Military Survey 9954, at the intersection of center-lines of Township Road 51 (60 feet wide) and County Highway 5 (60 feet wide).

THENCE, with the center-line of County Highway 5, S 11°-37'-40"E, a distance of 1632.91 feet to a 5/8 inch iron rod found.

THENCE, with the north line of the Carl J. Bleininger, Jr., 62.50 acre tract (O.R. 291, Pg. 938, Tract I), S 77°-38'-48"W, a distance of 836.29 feet to a stone found, passing a 5/8 inch iron rod set at 30.00 feet.

THENCE, with the north line of the said 62.50 acre tract and the north line of the Carl J. Bleininger, Jr. 92.20 acre tract (O.R. 291, Pg. 938, Tract III), S 77°-32'-44"W, a distance of 1394.94 feet to a stone found.

THENCE, with the east line of the Jack R. Stahler and Janice M. Stahler 40 acre tract (Vol. 303, Pg. 679), N 12°-23'-42"W, a distance of 1651.36 feet to a MAG nail set, passing a 5/8 inch iron rod set at 1621.36 feet.

THENCE, with the center-line of Township Road 51 and the north line of Virginia Military Survey 9954, the following two courses:

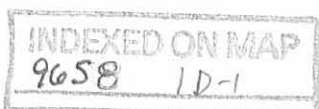
N 78°-00'-00"E, a distance of 1202.05 feet to a MAG nail set.

N 78°-07'-16"E, a distance of 512.60 feet to a MAG nail set.

THENCE, with the west line of the Trustees of Rushcreek Township, 1 acre tract, (Vol. 50, Pg. 251), S 11°-52'-44"E, a distance of 198.00 feet to a 5/8 inch iron rod set, passing a 5/8 inch iron rod set at 30.00 feet.

THENCE, with the south line of said 1 acre tract and south line of the Trustees of Rushcreek Township 132 square poles tract (Vol. 50, Pg. 252), N 78°-07'-16"E, a distance of 418.30 feet to a 5/8 inch iron rod set.

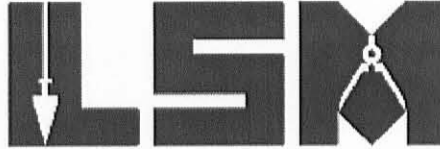
THENCE, with the east line of said 132 square poles tract, N 11°-52'-44"W, a distance of 198.00 feet to a MAG nail set, passing a 5/8 inch iron rod set at 168.00 feet.



Lee Surveying and Mapping Co., Inc.

Land Surveys • Topography • Subdivisions • Construction Layout

117 N. Madriver St.
Bellefontaine OH 43311



Phone: (937) 593-7335
Fax: (937) 593-7444
surveys@lsminc.us

THENCE, with the center-line of Township Road 51 and the north line of Virginia Military Survey 9954, N 78°-07'-16"E, a distance of 120.22 feet to the point of beginning.

Containing 82.630 acres of which 2.368 acres within the highway right-of-way.

Property is subject to any and all previous easements and rights-of-way of record.

The basis for bearings is north line of Virginia Military Survey 9954 and the center-line of Township Road 51, being N 75°-07'-16"E, and all other bearings are from angles and distances measured in a field survey by Lee Surveying and Mapping Co., Inc. on November 21, 2012.



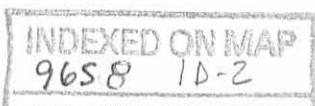
ORIGINAL STAMP IN GREEN

Description prepared by:

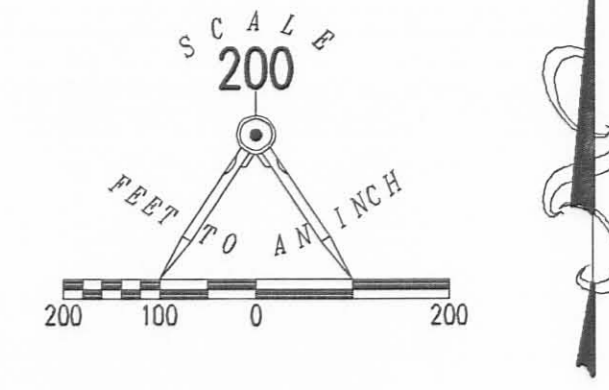
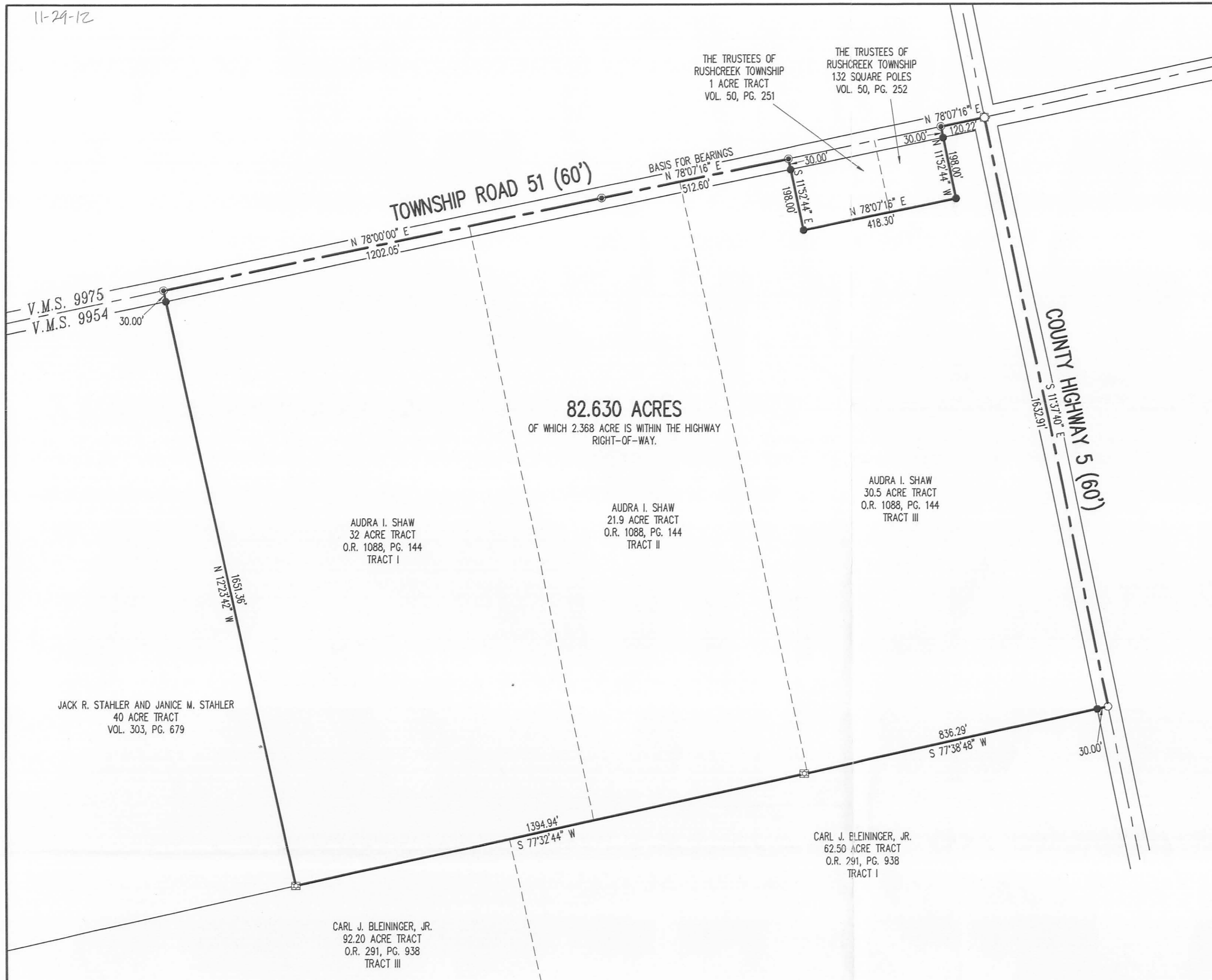
A handwritten signature in black ink that reads 'William K. Bruce'.

William K. Bruce
Professional Surveyor 7437
November 26, 2012

L-5432



11-29-12



- LEGEND
- 5/8 INCH IRON ROD SET WITH PLASTIC I.D. CAP STAMPED "LSM 7437"
 - 5/8 INCH IRON ROD FOUND
 - ⊙ MAG NAIL SET
 - ⊗ 1 INCH IRON ROD FOUND
 - ⊠ STONE FOUND

82.630 ACRES
 OF WHICH 2.368 ACRE IS WITHIN THE HIGHWAY
 RIGHT-OF-WAY.

AUDRA I. SHAW
 32 ACRE TRACT
 O.R. 1088, PG. 144
 TRACT I

AUDRA I. SHAW
 21.9 ACRE TRACT
 O.R. 1088, PG. 144
 TRACT II

AUDRA I. SHAW
 30.5 ACRE TRACT
 O.R. 1088, PG. 144
 TRACT III

JACK R. STAHLER AND JANICE M. STAHLER
 40 ACRE TRACT
 VOL. 303, PG. 679

CARL J. BLEININGER, JR.
 92.20 ACRE TRACT
 O.R. 291, PG. 938
 TRACT III

CARL J. BLEININGER, JR.
 62.50 ACRE TRACT
 O.R. 291, PG. 938
 TRACT I

**SURVEY OF A 82.630 ACRE TRACT OUT OF THE
 AUDRA I. SHAW
 32 ACRE, 21.9 ACRE AND 30.5 ACRE TRACTS
 OFFICIAL RECORD 1088, PAGE 144
 TRACTS I, II AND III
 VIRGINIA MILITARY SURVEY 9954
 RUSHCREEK TOWNSHIP
 LOGAN COUNTY, OHIO**

SURVEYED BY:

William K. Bruce
 WILLIAM K. BRUCE
 PROFESSIONAL SURVEYOR 7437
 NOVEMBER 21, 2012



COPYRIGHT 2012 BY:
LEE SURVEYING & MAPPING CO., INC.
 117 North Madriver Street
 BELLEFONTAINE, OHIO 43311
 (937) 593-7335
 www.lsminc.us
 surveys@lsminc.us
 ADW D1112 54321112 L-5432-2

INDEXED ON MAP
 9658 1P

2 WORKING DAYS
BEFORE YOU DIG
 CALL TOLL FREE **800-362-2764**
 OHIO UTILITIES PROTECTION SERVICE

12-9-13

Lee Surveying and Mapping Co., Inc.



Land Surveys • Topography • Subdivisions • Construction Layout

117 N. Madriver St.
Bellefontaine OH 43311



Phone: (937) 593-7335
Fax: (937) 593-7444
surveys@lsminc.us

THE TRUSTEES OF RUSHCREEK TOWNSHIP 1.901 ACRES

Lying in Virginia Military Survey 9954, Rushcreek Township, Logan County, Ohio.

Being all of The Trustees of Rushcreek Township 1 acre tract as deeded and described in Volume 50, Page 251 and all of The Trustees of Rushcreek Township 132 square poles as deeded and described in Volume 50, Page 252 of the Logan County Records of Deeds and being more particularly described as follows:

Commencing at a 1 inch iron rod found at the intersection of center-lines of Township Road 51 (60 feet wide) and County Highway 5 (60 feet wide).

THENCE, with the center-line of Township Road 51, S 78°-07'-16"W, a distance of 120.22 feet to a MAG nail set at the TRUE POINT OF BEGINNING.

THENCE, with the lines of the Philip Burkholder and Eleanor R. Burkholder, Trustees 82.630 acre tract (O.R. 1091, Pg. 266) the following three courses:

S 11°-52'-44"E, a distance of 198.00 feet to a 5/8 inch iron rod set, passing a 5/8 inch iron rod set at 30.00 feet.

S 78°-07'-16"W, a distance of 418.30 feet to a 5/8 inch iron rod set.

N 11°-52'-44"W, a distance of 198.00 feet to MAG nail set, passing a 5/8 inch iron rod set at 168.00 feet.

THENCE, with the center-line of Township Road 51, N 78°-07'-16"E, a distance of 418.30 feet to the point of beginning.

Containing 1.901 acres of which 0.288 acre is within the highway right-of-way.

Property is subject to any and all previous easements and rights-of-way of record.

The basis for bearings is the center-line of Township Road 51, being N 78°-07'16"E, and all other bearings are from angles and distances measured in a field survey by Lee Surveying and Mapping Co., Inc. on November 21, 2012.

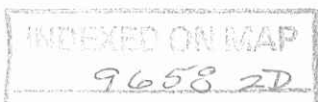
Description prepared by:

William K. Bruce
Professional Surveyor 7437
December 3, 2013
Revised December 5, 2013



ORIGINAL STAMP IN GREEN

L-34321213

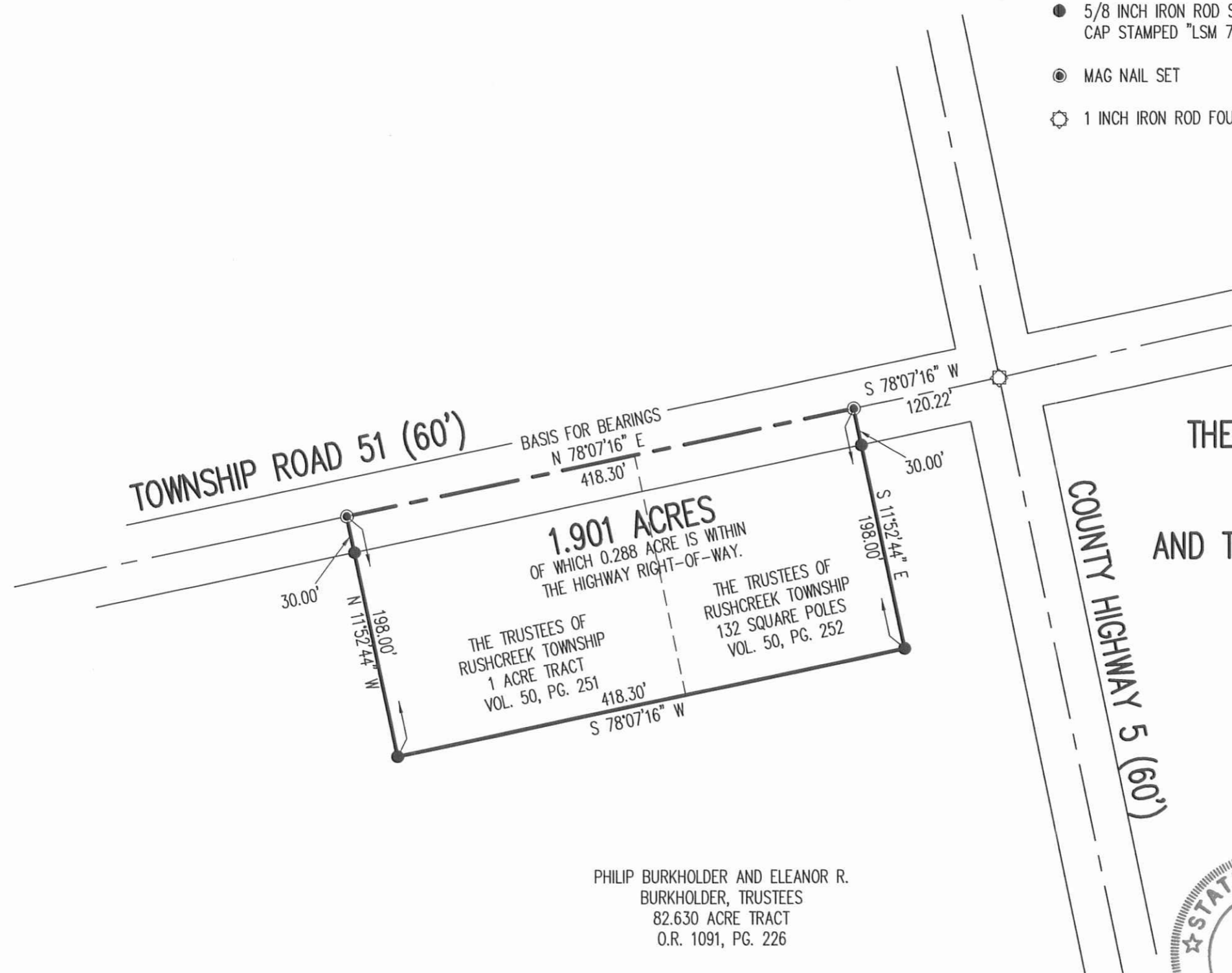
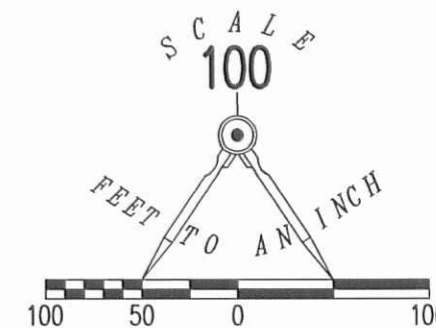


12-5-13

APPROVED

LEGEND

- 5/8 INCH IRON ROD SET WITH PLASTIC I.D. CAP STAMPED "LSM 7437"
- ⊙ MAG NAIL SET
- ⊗ 1 INCH IRON ROD FOUND



RETRACEMENT SURVEY OF THE
THE TRUSTEES OF RUSHCREEK TOWNSHIP
1 ACRE TRACT
VOLUME 50, PAGE 251
AND THE TRUSTEES OF RUSHCREEK TOWNSHIP
132 SQUARE POLES
VOLUME 50, PAGE 252
VIRGINIA MILITARY SURVEY 9954
RUSHCREEK TOWNSHIP
LOGAN COUNTY, OHIO

SURVEYED BY:

William K. Bruce

WILLIAM K. BRUCE
PROFESSIONAL SURVEYOR 7437
DATE OF PLAT DECEMBER 3, 2013
DATE OF FIELD WORK NOVEMBER 21, 2012



ORIGINAL STAMP IN GREEN

COPYRIGHT 2013 BY:

LEE SURVEYING & MAPPING CO., INC.
117 North Modriver Street
BELLEFONTAINE, OHIO 43311
(937) 593-7335
WWW.LSMINC.US
surveys@lsminc.us

ADW D1213 54321213 L-5432-3

2 WORKING DAYS
BEFORE YOU DIG
CALL TOLL FREE **800-362-2764**
OHIO UTILITIES PROTECTION SERVICE.

INDEXED ON MAP

9658 2P