



CHARLES R. STANFIELD SURVEY
50.384 ACRES
April 20, 2013

The following described 50.384 acre tract of land is situated in Virginia Military Surveys 9955 and 9956, Rushcreek Township, Logan County, Ohio and being all of Robert C. Stanfield's and Betty A. Stanfield's 52.60 acre tract described in Deed Volume 361, page 667, said 50.384 acre tract more particularly described as follows:

Beginning at a concrete monument found at the southeast corner of V.M.S. 9955, the southwest corner of V.M.S. 9956, the northwest corner of V.M.S. 9936, and the northeast corner of V.M.S. 10041, said monument also in the right-of-way of Township Road 137 (50 feet wide) (Highway Plan X-137) and at the southwest corner of Robert M. Lautenschlager's 65.78 acre tract described in Deed Volume 376, page 753, the northwest corner of Charles R. Stanfield's 101.008 acre tract described in Official Record Volume 927, page 368, the northeast corner of Stanfield/Sayre Farms, LLC's 44.675 acre, Parcel One, described in Official Record Volume 1069, page 837, and the southeast corner of said 52.60 acre tract;

Thence **South 82°06'00" West 1180.98 feet**, following the south line of V.M.S. 9955, the north line of V.M.S. 10041, the north line of said 44.675 acre tract, and the south line of said 52.60 acre tract, to a point which bears South 4°40'02" East 3.95 feet from an iron bar set at the southeast corner of Charles R. Fillinger's and Diana L. Fillinger's 2.10 acre tract described in Official Record Volume 278, page 748;

Thence **North 4°40'02" West 261.87 feet**, departing from the north line of V.M.S. 10041 and the north line of said 44.675 acre tract, entering V.M.S. 9955, passing at 3.95 feet an iron bar set at the southeast corner of said 2.10 acre tract, following the east line of said 2.10 acre tract and a west line of said 52.60 acre tract, to a 1-½ inch iron pipe found;

Thence **North 63°24'54" West 196.67 feet**, following the north line of said 2.10 acre tract and a south line of said 52.60 acre tract, to a 1-½ inch iron pipe found;

Thence **South 29°29'40" West 268.06 feet**, following a west line of said 2.10 acre tract and an east line of said 52.60 acre tract, to a ¼ inch by 1-½ inch iron bar found;

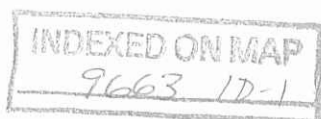
Thence **South 6°33'16" East 159.88 feet**, following a west line of said 2.10 acre tract and an east line of said 52.60 acre tract, passing a ¼ inch by 1-½ inch iron bar found at 154.88 feet, to a point in the south line of V.M.S. 9955, the north line of V.M.S. 10041 and the north line of said 44.675 acre tract;

Thence **South 82°06'00" West 588.08 feet**, following the south line of V.M.S. 9955, the north line of V.M.S. 10041, the north line of said 44.675 acre tract, and the south line of said 52.60 acre tract, leaving the right-of-way of Township Road 137, to an iron bar set in the southeasterly line of New York Central Lines, LLC's 277.42 acre tract (Segment A) described in Official Record Volume 456, page 148;

Thence following the southeasterly line of said 277.42 acre tract and the northwesterly line of said 52.60 acre tract, along a curve to the left, having a radius of 2914.79 feet, an arc length of 384.11 feet, and a chord which bears **North 42°43'15" East 383.83 feet**, to an iron bar set;

Thence **North 38°56'45" East 680.00 feet**, following the southeasterly line of said 277.42 acre tract and the northwesterly line of said 52.60 acre tract, to a 4 inch square concrete post found;

Thence **South 51°03'15" East 10.00 feet**, following the southeasterly line of said 277.42 acre tract and the northwesterly line of said 52.60 acre tract, to a 4 inch square concrete post found;



Thence **North 38°56'45" East 1784.31 feet**, following the southeasterly line of said 277.42 acre tract and the northwesterly line of said 52.60 acre tract, to an iron bar set in the west line of V.M.S. 9956;

Thence **North 7°21'18" West 9.68 feet**, following the east line of V.M.S. 9955, the west line of V.M.S. 9956, the southeasterly line of said 277.42 acre tract, and the northwesterly line of said 52.60 acre tract, to an iron bar set;

Thence **North 38°56'45" East 594.84 feet**, leaving V.M.S. 9955 and entering V.M.S. 9956, following the southeasterly line of said 277.42 acre tract and the northwesterly line of said 52.60 acre tract, to an iron bar set at the northwest corner of Kathleen Kinney Davis' 34.63 acre, Parcel Two, Tract II, described in Official Record Volume 552, page 777;

Thence **South 7°10'24" East 960.28 feet**, departing from the southeasterly line of said 277.42 acre tract, following the west line of said 34.63 acre tract and an east line of said 52.60 acre tract, to an iron bar set in the north line of Kathleen Kinney Davis' 16.52 acre, Parcel Two, Tract I, described in Official Record Volume 552, page 777;

Thence **South 82°51'43" West 427.03 feet**, following the north line of said 16.52 acre tract and a south line of said 52.60 acre tract, to an iron bar set in the east line of V.M.S. 9955;

Thence **South 7°21'14" East 1383.80 feet**, following the east line of V.M.S. 9955, the west line of V.M.S. 9956, the west line of said 16.52 acre tract, the west line of said 65.78 acre tract, and the east line of said 52.60 acre tract, to the **place of beginning, containing 50.384 acres**, more or less, and subject to all valid easements and restrictions of record.

Of the above-described 50.384 acre tract of land, 0.242 acre is within the road right-of-way of Township Road 137.

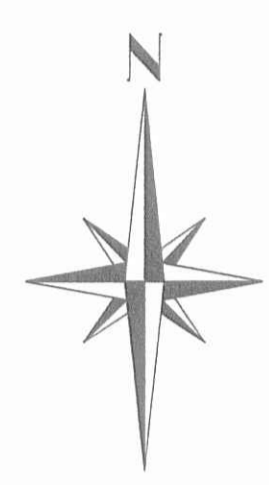
The above description was prepared from an actual field survey made by George A. Blackburn, Registered Surveyor #7873, during the month of April 2013. Iron bars set are 5/8 inch by 30 inch reinforcing rods with plastic caps marked "Blackburn RS #7873." Bearings indicated herein are based on the south line of V.M.S. 9955 and the north line of V.M.S. 10041 bearing South 82°06'00" West.

Description prepared by: George A. Blackburn 4-20-2013
George A. Blackburn, R.S. #7873
12125 Green Street
Middleburg, Ohio 43336
(937) 666-5605



INDEXED ON MAP
9663 1D-2

PLAT OF SURVEY IN VIRGINIA MILITARY SURVEY 9955 and 9956 RUSHCREEK TOWNSHIP LOGAN COUNTY, OHIO

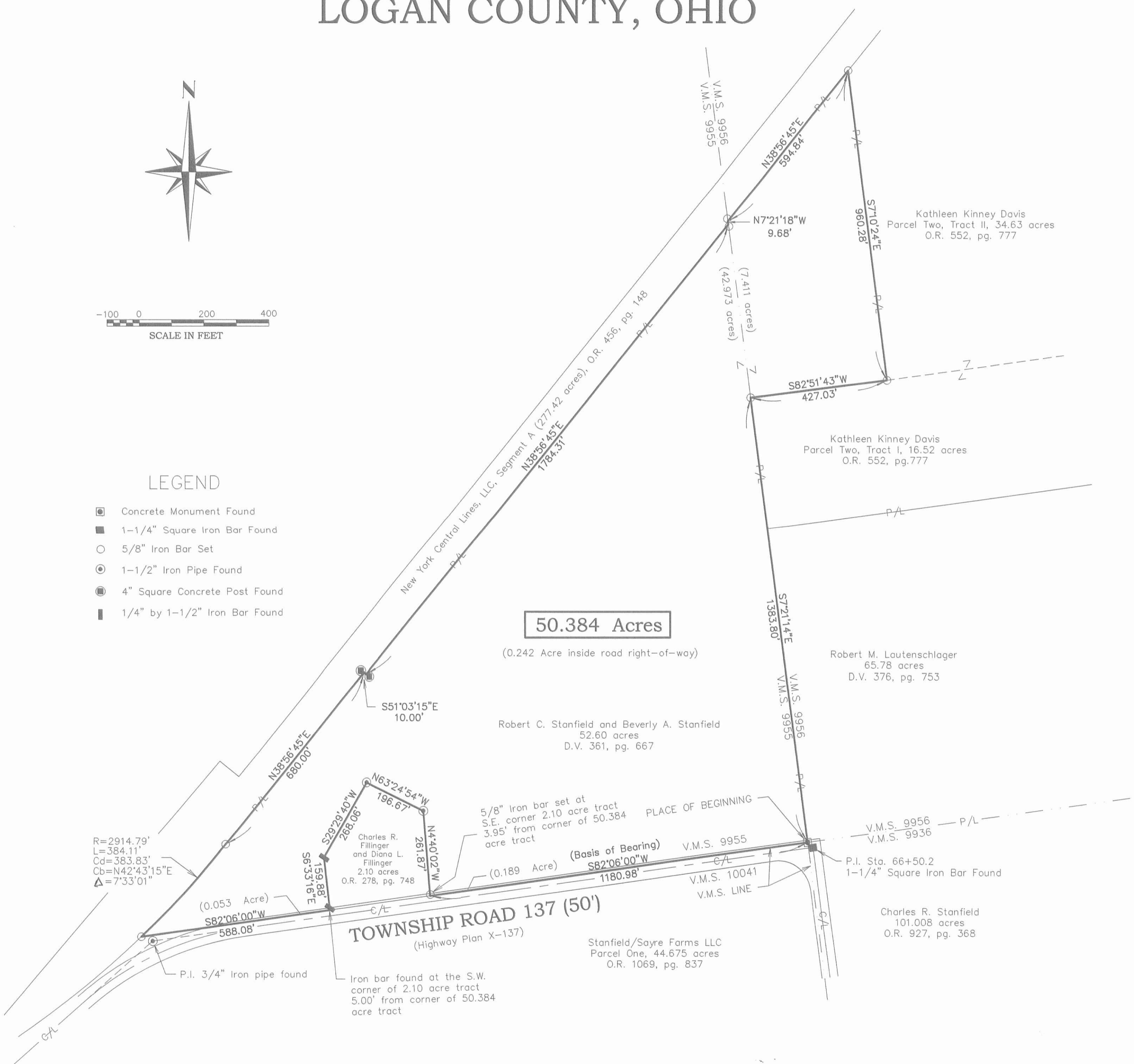


LEGEND

- Concrete Monument Found
- 1-1/4" Square Iron Bar Found
- 5/8" Iron Bar Set
- 1-1/2" Iron Pipe Found
- 4" Square Concrete Post Found
- 1/4" by 1-1/2" Iron Bar Found

50.384 Acres

(0.242 Acre inside road right-of-way)



R=2914.79'
 L=384.11'
 Cd=383.83'
 Cb=N42°43'15"E
 Δ=7°33'01"

TOWNSHIP ROAD 137 (50')
 (Highway Plan X-137)

CERTIFICATION:

I HEREBY CERTIFY THAT THIS PLAT WAS PREPARED FROM AN ACTUAL FIELD SURVEY AND THAT MONUMENTS WERE PLACED AS INDICATED HEREON.

George A. Blackburn 4-20-2013
 GEORGE A. BLACKBURN, R.S. 7873



INDEXED ON MAP
 9663.1P