

12-13-28
clear & cold

G. Wilgus
H. Miller
H. Lee
E. Doble
M. James

Road # 5 In Corp.
Commencing West of Bridge
at Mon. set corner to
VM 5-9909-12536-10041-13446
Stakes set 30' from E
both side up to and
including stake 9+00
Mon. set at stakes
1+00 & 8+00 at 30'
N and 30' S. of 4

9+00

8+00

7+00

6+00

5+00

4+00

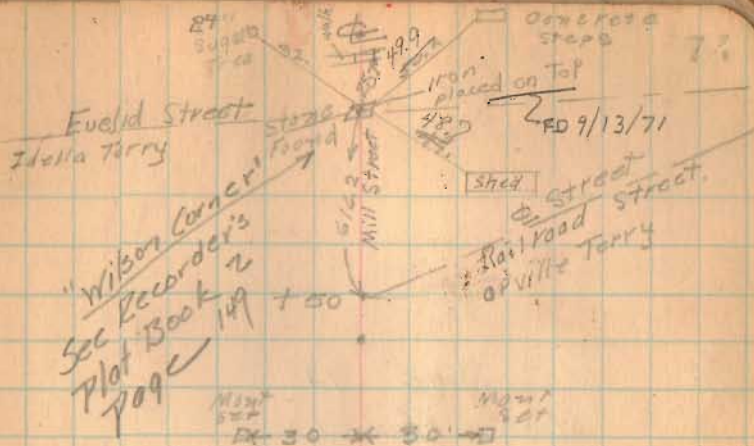
3+00

2+00

1+00

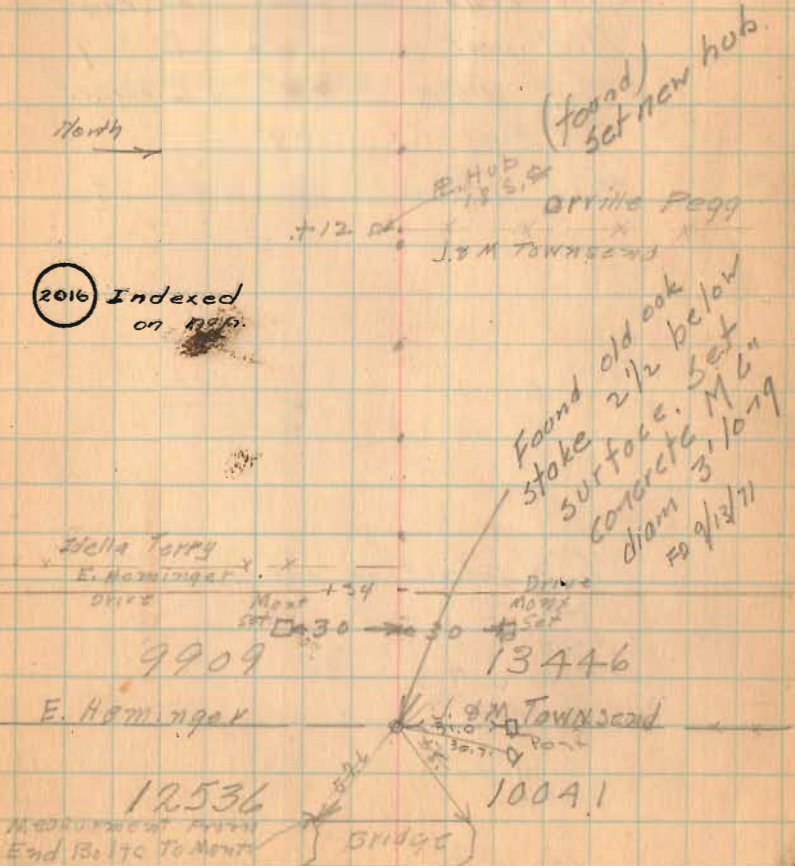
0+00

SEC. COR. SET CONCRETE MARKER



North
→

2016 Indexed
on map.



G. Wilgus
H. Miller
H. Lee

12/13/38

"A" See Page 74

"B" Stone (found)

Sq. concrete with glass N.W. 76.2'

Steel post in concrete S.E. 36.7

Mag "Arthur Sargent" N.E. corner
of base S.W. 77.9'

"C" Stone (found) see page 74

(2016) Indexed on map.

