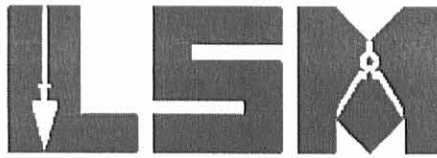


Rec'd 6-4-07 OK JUB

Lee Surveying and Mapping Co., Inc.

Land Surveys • Topography • Subdivisions • Construction Layout

117 N. Madriver St.
Bellefontaine OH 43311



Phone: (937) 593-7335
Fax: (937) 593-7444

CORWIN 7.985 ACRES

Lying in Virginia Military Survey 9909, Village of Rushsylvania, Rushcreek Township, Logan County, Ohio.

Being out of the Hannah M. Corwin 5.20 acre tract and 3.61 acre tract as deeded and described in Volume 402, Page 709 of the Logan County Records of Deeds and being more particularly described as follows:

Commencing on a 5/8 inch iron rod found on the north line of Virginia Military Survey 9909 at the intersection of center-lines of Mill Street and Sandusky Street.

THENCE, with the center-line of Sandusky Street (66 feet wide), S 32°-30'-00"W, a distance of 190.50 feet to a railroad spike found at the TRUE POINT OF BEGINNING.

THENCE, with the center-line of Sandusky Street, S 32°-30'-00"W, a distance of 398.48 feet to a MAG nail set.

THENCE, with the northerly line of the Paula K. Fout, fka Paula K. Burton 0.45 acre tract (O.R. 369, Pg. 667), N 69°-56'-22"W, a distance of 194.70 feet to a 5/8 inch iron rod set, passing a 5/8 inch iron rod set at 33.79 feet.

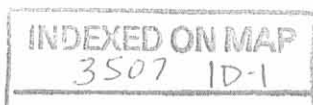
THENCE, with the westerly lines of the said 0.45 acre tract, the Dean Q. Manns 0.38 acre tract and 0.30 acre tract (O.R. 239, Pg. 528, Tract I and Tract II) and the Leslie H. Geeslin 0.25 acre tract (O.R. 339, Pg. 787), S 32°-30'-00"W, a distance of 315.30 feet to a 5/8 inch iron rod found.

THENCE, S 32°-30'-00"W, a distance of 65.19 feet to a 5/8 inch iron rod set.

THENCE, with the northerly lines of the Daniel E. Springs 1 acre tract (O.R. 730, Pg. 522) and the Gary J. Simmons 27.14 acre tract (O.R. 64, Pg. 998, Tract I), N 69°-59'-41"W, a distance of 303.67 feet to a 5/8 inch iron rod found.

THENCE, with the east line of Richey Subdivision (Plat Cabinet A, Slide 543), N 15°-12'-00"E, a distance of 524.65 feet to a railroad spike found on the north line of Virginia Military Survey 9909 and the center-line of Mill Street, passing a 10 inch wood corner post found at 497.16 feet and a 5/8 inch iron rod set at 499.65 feet.

THENCE, with the north line of Virginia Military Survey 9909 and the center-line of Mill Street (50 feet wide), N 80°-37'-12"E, a distance of 642.12 feet to a MAG nail set.



Lee Surveying and Mapping Co., Inc.

Land Surveys • Topography • Subdivisions • Construction Layout

117 N. Madriver St.
Bellefontaine OH 43311



Phone: (937) 593-7335
Fax: (937) 593-7444

THENCE, with the line of the Micheal T. Gibbs 0.38 acre tract (O.R. 860, Pg. 639), the following two courses:

S 15°-30'-17"W, a distance of 81.57 feet to a 5/8 inch iron rod set, passing a 5/8 inch iron rod set at 27.56 feet.

S 71°-29'-00"E, a distance of 145.00 feet to the point of beginning, passing a 5/8 inch iron rod set at 110.99 feet.

Containing 7.985 acres, of which 0.671 acre is within the highway rights-of-way.

The basis for bearings is the center-line of Sandusky Street, being S 32°-30'-00"W, and all other bearings are from angles and distances measured in a field survey by Lee Surveying and Mapping Co., Inc. on May 16, 2007 and June 1, 2007.



ORIGINAL STAMP IN GREEN

Description prepared by:

A handwritten signature in cursive script that reads 'William K. Bruce'.

William K. Bruce
Professional Surveyor 7437
June 1, 2007

4427057



Recd 6-4-07 OK JUB

Lee Surveying and Mapping Co., Inc.

Land Surveys • Topography • Subdivisions • Construction Layout

117 N. Madriver St.
Bellefontaine OH 43311



Phone: (937) 593-7335
Fax: (937) 593-7444

CORWIN 0.029 ACRE

Lying in Virginia Military Survey 9909, Village of Rushsylvania, Rushcreek Township, Logan County, Ohio.

Being out of the Hannah M. Corwin 3.61 acre tract as deeded and described in Volume 402, Page 709 of the Logan County Records of Deeds and being more particularly described as follows:

Commencing on a 5/8 inch iron rod found on the north line of Virginia Military Survey 9909 at the intersection of center-lines of Mill Street and Sandusky Street.

THENCE, with the center-line of Sandusky Street (66 feet wide), S 32°-30'-00"W, a distance of 588.98 feet to a MAG nail set.

THENCE, with the northerly line of the Paula K. Fout, fka Paula K. Burton 0.45 acre tract (O.R. 369, Pg. 667), N 69°-56'-22"W, a distance of 194.70 feet to a 5/8 inch iron rod set, passing a 5/8 inch iron rod set at 33.79 feet.

THENCE, with the westerly lines of the said 0.45 acre tract, the Dean Q. Manns 0.38 acre tract and 0.30 acre tract (O.R. 239, Pg. 528, Tract I and Tract II) and the Leslie H. Geeslin 0.25 acre tract (O.R. 339, Pg. 787), S 32°-30'-00"W, a distance of 315.30 feet to a 5/8 inch iron rod found at the TRUE POINT OF BEGINNING.

THENCE, with the southerly line of the said 0.25 acre tract, S 69°-56'-22"E, a distance of 19.70 feet to a 5/8 inch iron rod found.

THENCE, with the westerly line of the Sharon L. Deardorff 0.256 acre tract (O.R. 812, Pg. 710), S 32°-28'-04"W, a distance of 65.17 feet to a double trunk tree stump found, passing a 5/8 inch iron rod found at 59.17 feet.

THENCE, with the northerly line of the Daniel E. Springs 1 acre tract (O.R. 730, Pg. 522), N 69°-59'-41"W, a distance of 19.74 feet to a 5/8 inch iron rod set.

THENCE, N 32°-30'-00"E, a distance of 65.19 feet to point of beginning.

Containing 0.029 acre.

The basis for bearings is the center-line of Sandusky Street, being S 32°-30'-00"W, and all other bearings are from angles and distances measured in a field survey by Lee Surveying and Mapping Co., Inc. on May 16, 2007 and June 1, 2007.

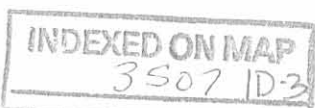


Description prepared by:

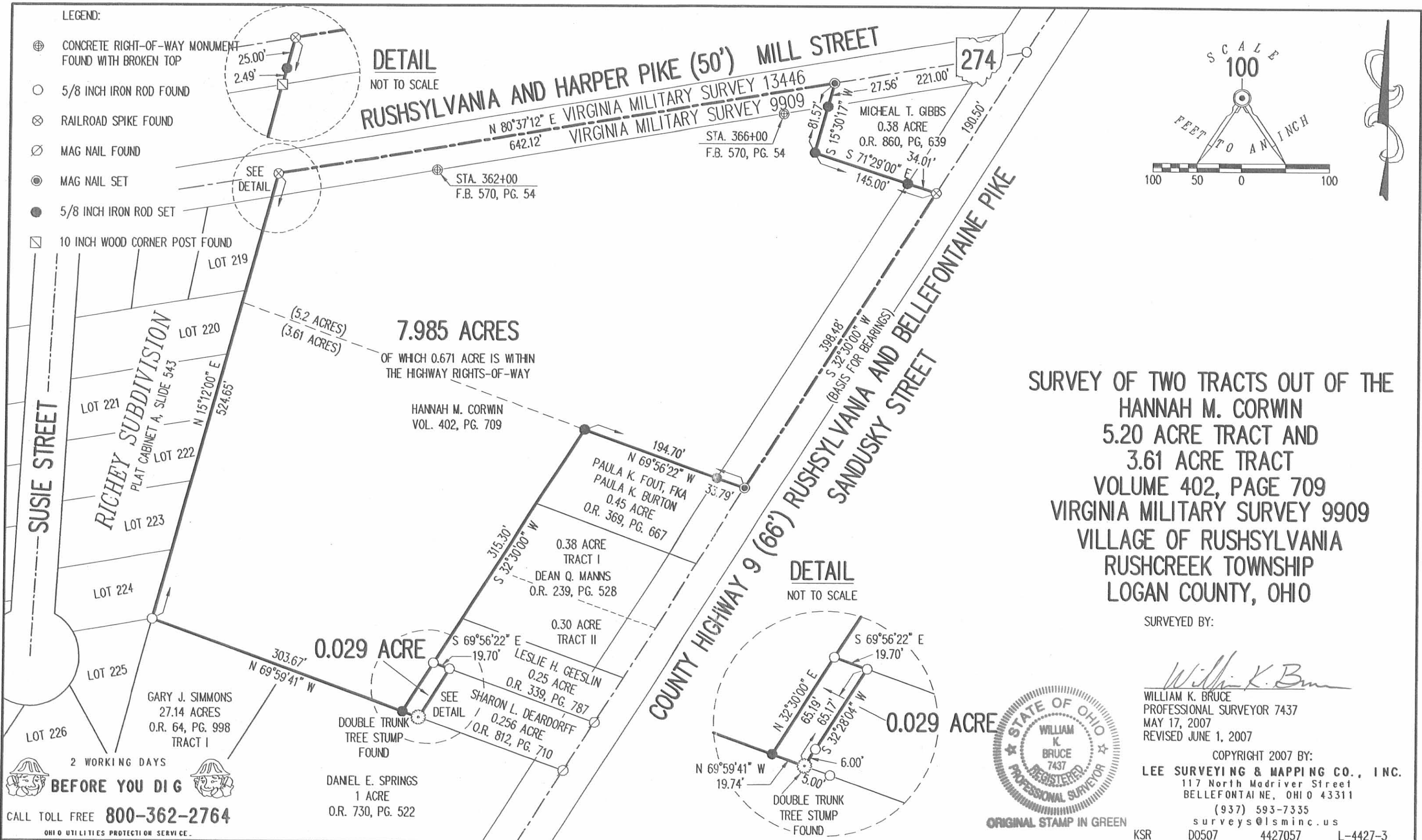
A handwritten signature in black ink that reads 'William K. Bruce'.

William K. Bruce
Professional Surveyor 7437
June 1, 2007

4427057



Rev 6-4-07 OK JLB



**SURVEY OF TWO TRACTS OUT OF THE
HANNAH M. CORWIN
5.20 ACRE TRACT AND
3.61 ACRE TRACT
VOLUME 402, PAGE 709
VIRGINIA MILITARY SURVEY 9909
VILLAGE OF RUSHSYLVANIA
RUSHCREEK TOWNSHIP
LOGAN COUNTY, OHIO**

SURVEYED BY:
William K. Bruce
WILLIAM K. BRUCE
PROFESSIONAL SURVEYOR 7437
MAY 17, 2007
REVISED JUNE 1, 2007

COPYRIGHT 2007 BY:
LEE SURVEYING & MAPPING CO., INC.
117 North Madriver Street
BELLEFONTAINE, OHIO 43311
(937) 593-7335
surveys@lsmcinc.us
KSR D0507 4427057 L-4427-3



ORIGINAL STAMP IN GREEN

INDEXED ON MAP
3507 1P

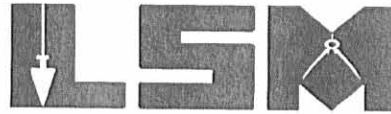
2 WORKING DAYS
BEFORE YOU DIG
CALL TOLL FREE **800-362-2764**
OHIO UTILITIES PROTECTION SERVICE.

1 RECD 2-2-06 SMY & K

Lee Surveying and Mapping Co., Inc.

Land Surveys • Topography • Subdivisions • Construction Layout

117 N. Madriver St.
Bellefontaine OH 43311



Phone: (937) 593-7335
Fax: (937) 593-7444

1975-2005 - 30 YEARS OF EXCELLENCE

HOUSEHOLD REALTY CORPORATION

0.256 ACRES

Lying in Virginia Military Survey 9909, Village of Rushsylvania, Rushcreek Township, Logan County, Ohio.

Being all of the Household Realty Corporation 0.25 acre tract as deeded and described in Official Record 803, Page 602 of the Logan County Records of Deeds and being more particularly described as follows:

Beginning at a 5/8 inch iron rod found in a monument box on the intersection of center-lines of Ohio Route 274 and Sandusky Street.

THENCE, with the center-line of Sandusky Street (66 feet wide), S 32°-30'-00"W, a distance of 904.28 feet to a MAG nail set at the TRUE POINT OF BEGINNING.

THENCE, with the center-line of Sandusky Street, S 32°-30'-00"W, a distance of 65.00 feet to a MAG nail set.

THENCE, with the northerly line of the Daniel E. Springs 1.00 acre tract (O.R. 730, Pg. 522), N 69°-59'-41"W, a distance of 175.00 feet to a two trunk oak tree found, passing 0.10' south of a harrow tooth found at 3.41 feet and 5/8 inch iron rods set at 33.80 feet and 170.00 feet.

THENCE, with the easterly line of a tract of unknown ownership, N 32°-28'-04"E, a distance of 65.17 feet to a 5/8 inch iron rod set, passing a 5/8 inch iron rod set at 6.00 feet.

THENCE, with the southerly line of the Leslie H. Geeslin 0.25 acre tract (O.R. 339, Pg. 787), S 69°-56'-22"E, a distance of 175.00 feet to the point of beginning, passing a 5/8 inch iron rod found at 143.95 feet.

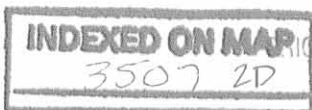
Containing 0.256 acre, of which 0.049 acre is within the highway right-of-way.

The basis for bearings is the center-line of Sandusky Street, being S 32°-30'-00"W, and all other bearings are from angles and distances measured in a field survey by Lee Surveying and Mapping Co., Inc. on January 30, 2006.



Description prepared by:

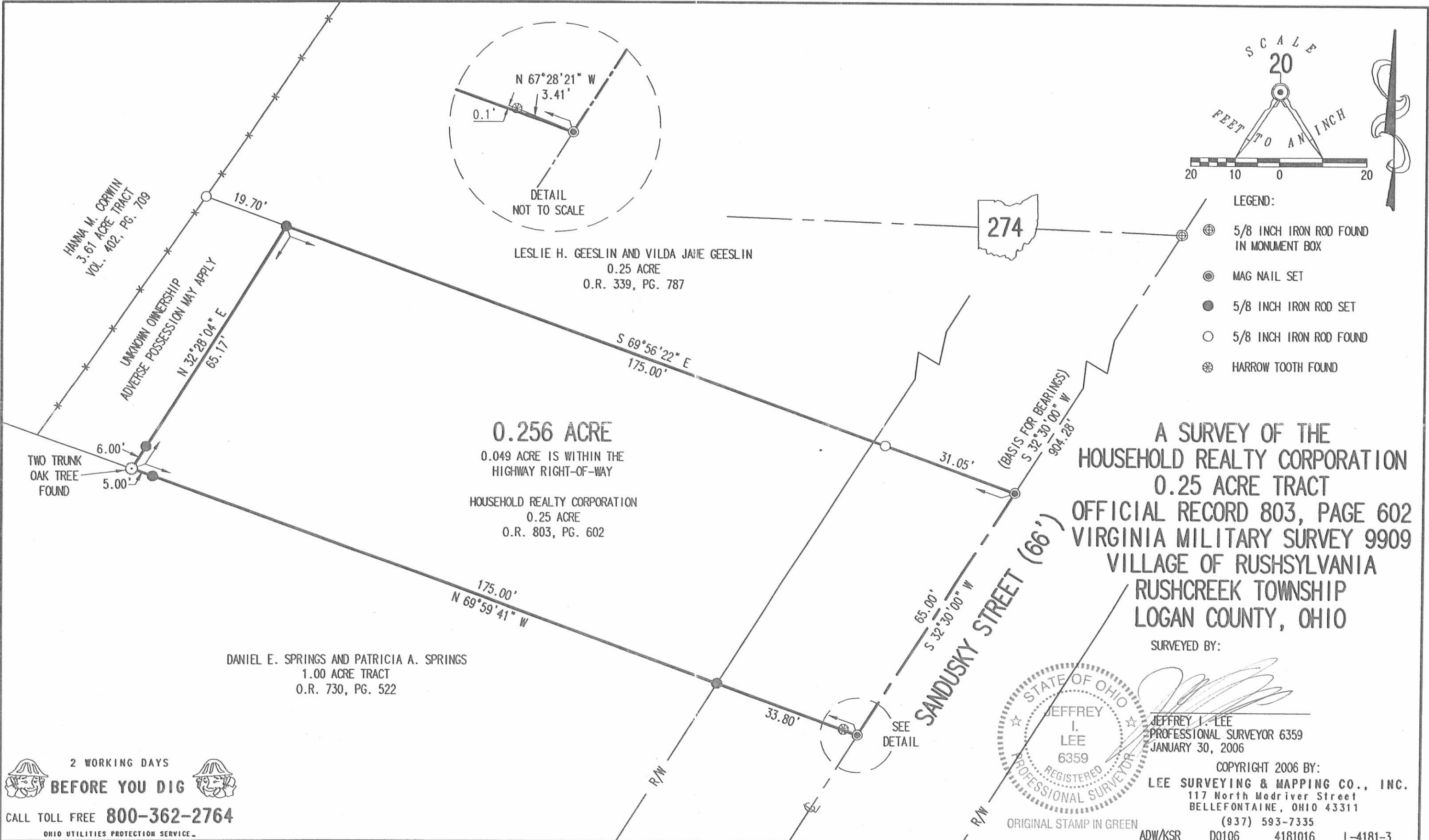
[Handwritten Signature]
Jeffrey I. Lee
Professional Surveyor 6359
February 1, 2006



ORIGINAL STAMP IN GREEN

L-4181

REC'D 2-2-06 SWY OK



2 WORKING DAYS
BEFORE YOU DIG
CALL TOLL FREE **800-362-2764**
OHIO UTILITIES PROTECTION SERVICE.

INDEXED ON MAP
35072P

LESLIE H. GEESLIN

REGISTERED SURVEYOR 5248

P. O. BOX 274

RUSHSYLVANIA, OHIO 43347

TELEPHONE: (937) 468-2793

GEESLIN SURVEY

November 25, 1997

The following described real estate situated in the State of Ohio, County of Logan, Township of Rushcreek, being part of Virginia Military Survey 9909, in the Village of Rushsylvania, and more particularly described as follows:

Beginning at a magnetic nail set in the centerline of Sandusky Street at the northeast corner of Terreck B. Franks' 0.25 acre tract as described in O. R. Vol. 281 Page 536.

Thence with said Franks' north line N. 70° 08' 19" W. 194.70 feet to a 5/8 inch iron bar set in the east line of Hannah M. Corwin's 3.16 acre tract as described in D. B. Vol. 402 page 709, passing a 5/8 inch iron bar set at 33.78 feet.

Thence with said Corwin's east line N. 32° 13' 06" E. 60.00 feet to a 5/8 inch iron bar set at the southwest corner of Dean Q. Manns' 0.38 acre tract (Tract I) as described in O. R. Vol. 239 Page 528.

Thence with said Manns' south line S. 70° 08' 19" E. 194.70 feet to a cap and nail set in the centerline of said Sandusky St., passing a 5/8 inch iron bar set at 160.92 feet.

Thence with the centerline of said Sandusky St. S. 32° 13' 06" W. 60.00 feet to the place of beginning.

Containing 0.262 acre more or less of which 0.045 acre is in the right of way of Sandusky Street.

The above described 0.262 acre tract being a new survey of Leslie H. Geeslin, et al's 0.25 acre tract as described in O. R. Vol. 339 Page 787.

Bearings are based on an assumed bearing (S. 32° 13' 06" W.) for the centerline of Sandusky Street in this field survey by Leslie H. Geeslin, Reg. Surveyor 5248 on November 25, 1997.

RUSHCRK\39\GEESLIN.SAM

INDEXED ON MAP
3507 3D



Leslie H. Geeslin

SCALE: 1"=30'



HANNAH M. CORWIN
3.16 AC.
D.B. VOL. 402 PG. 709

DEAN Q. MANNS
0.38 AC. (TRACT I)
D.R. VOL. 239 PG. 528

S. 70°08'19"E.

N. 32°13'06"E. 60.00'

0.262 AC.

LESLIE H. GEESLIN, ET AL
0.25 AC.
D.R. VOL. 339 PG. 787

N. 70°08'19"W.

TERRECK B.
FRANKS 0.25 AC.
D.R. VOL. 281 PG. 536

194.70' 33.78'

(0.045 AC)

194.70'

33.78'

S. 32°13'06"W. 60.00'
(66')

N. 32°13'06"E. 65.00'
SANDUSKY ST.

LEGEND:

- = 5/8 INCH IRON BAR FOUND
- = CAP AND NAIL SET
- = 5/8 INCH IRON BAR SET
- ◇ = MAGNETIC NAIL SET

SURVEY OF 0.262 ACRES
IN THE VILLAGE OF
RUSHSYLVANIA, VIRGINIA
MILITARY SURVEY 9909,
RUSHCREEK TOWNSHIP,
LOGAN COUNTY, OHIO
ON NOVEMBER 25, 1997



INSERT ON MAP
3507 3P

Leslie H. Geeslin
LESLIE H. GEESLIN
RUSHSYLVANIA, OH
(937) 468-2793

REC'D 2-6-96 SWY OK ✓

LESLIE H. GEESLIN
REGISTERED SURVEYOR 5248
P. O. BOX 274
RUSHSYLVANIA, OHIO 43347
TELEPHONE: (513) 468-2793

EASEMENT SURVEY

(Geeslin to Manns)

The following described easement situated in the State of Ohio, County of Logan, Township of Rushcreek, being part of Virginia Military Survey 9909 in the Village of Rushsylvania and more particularly described as follows:

Beginning at a cap and nail set in the centerline of Sandusky Street at the northeast corner of Leslie H. Geeslin's 0.25 acre tract as described in D. B. Vol. 248 Page 428.

Thence with said centerline S. 32° 13' 06" W. 1.39 feet to a railroad spike found.

Thence N. 70° 15' 25" W. 194.79 feet to a point in the east line of Hannah Corwin's 3.16 acre tract as described in D. B. Vol. 402 Page 709, passing a 1/2 inch iron pipe found at 194.47 feet.

Thence with said Corwin's east line N. 32° 13' 06" E. 1.80 feet to a 5/8 inch iron bar set at the southwest corner of Dean Manns' 0.30 acre tract as described in O. R. Vol. 239 Page 528.

Thence with said Manns' south line S. 70° 08' 19" E. 194.70 feet to the place of beginning.

The above described easement being on the north side of Leslie H. Geeslin etux's 0.25 acre tract as described in D. B. Vol. 248 Page 428.

Bearings are based on an assumed bearing (S. 32° 13' 06" W.) for the centerline of Sandusky Street in this field survey by Leslie H. Geeslin on February 5, 1996.

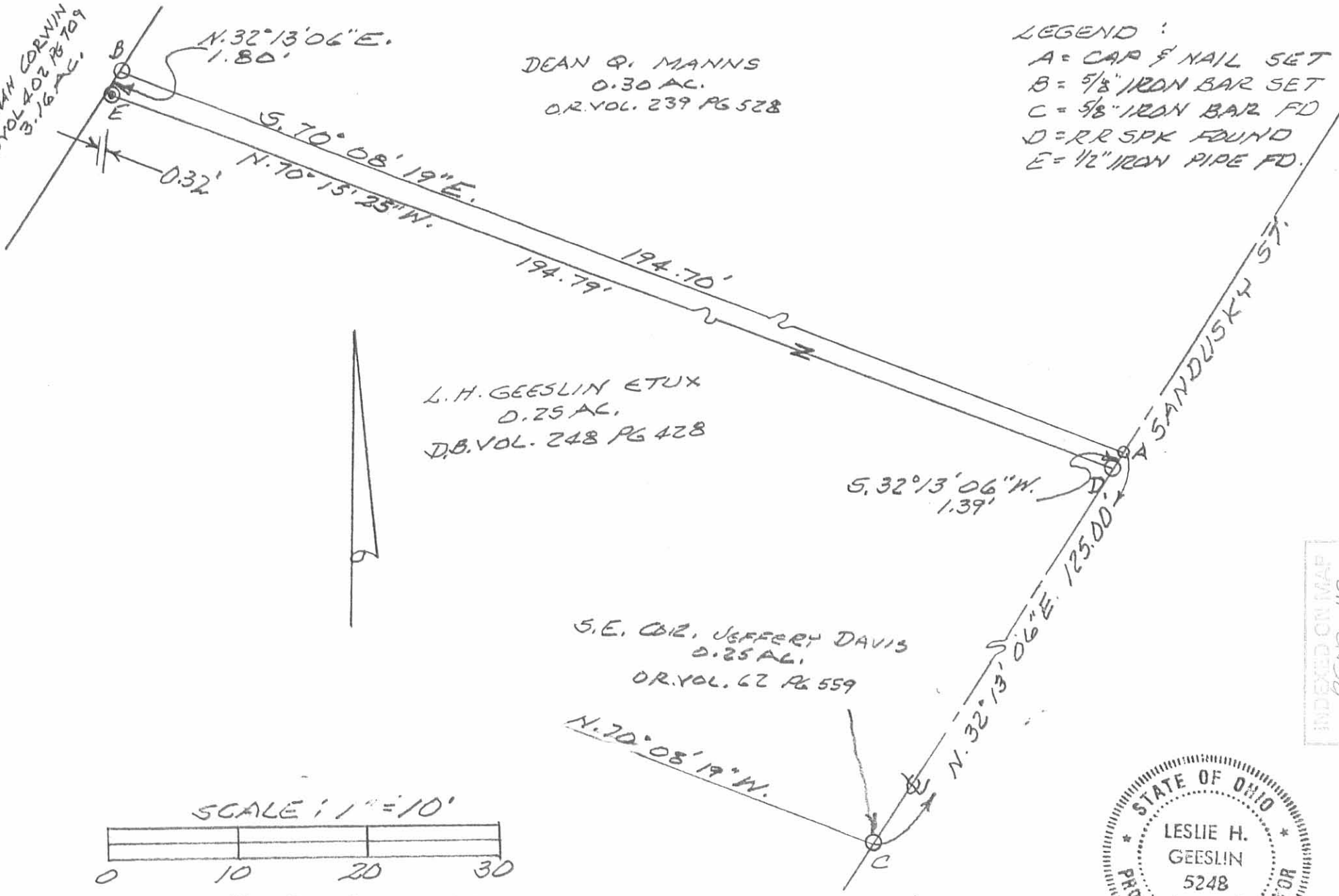


INDEXED ON MAP
3507 4D

HANNAN CORWIN
DB VOL 402 PG 709
3.16 AC.

DEAN Q. MANNS
0.30 AC.
O.R. VOL. 239 PG 528

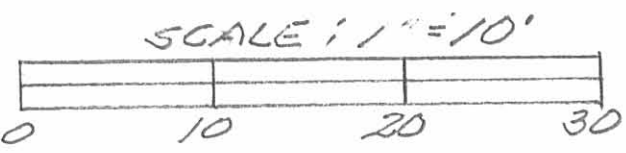
LEGEND:
A = CAP & NAIL SET
B = 5/8" IRON BAR SET
C = 5/8" IRON BAR FD
D = RR SPK FOUND
E = 1/2" IRON PIPE FD.



L. H. GEESLIN ETUX
0.25 AC.
D.B. VOL. 248 PG 428

S. E. COR. JEFFERY DAVIS
0.25 AC.
O.R. VOL. 62 PG 559

INDEXED ON MAP
3507 4P



FEBRUARY 5, 1996
 SURVEY OF EASEMENT ON NORTH SIDE
 OF L. H. GEESLIN'S 0.25 AC. TRACT IN
 VILLAGE OF RUSHSYLVANIA, TMS. 99094,
 RUSHCREEK TOWNSHIP, LOGAN COUNTY,
 OHIO.

Leslie H. Geeslin
 LESLIE H. GEESLIN
 RUSHSYLVANIA, OHIO
 PH 513-468-2793

MOSBARGER SURVEY
Rushsylvania, Ohio
VMS 9909

August 29, 1953

The following described real estate situated in the Village of Rushsylvania, Rushcreek Township, Logan County, Ohio and being part of Virginia Military Survey #9909 and being more particularly described as follows:

Beginning at an iron pipe in the center of Sandusky Street (C.H.#9) at the Southwest corner of a 0.34 acre tract presently belonging to Kenneth Marmon and being Station 330+66 of said C. H. #9 as shown on page 27 of the Logan County Engineer's Field Book #578; thence with the South line of said Marmon's tract S. 52°-24' E. 241.1 feet to a post in the West right-of-way line of the CCC & St.L. Railroad; thence with said West right-of-way line S. 42°-47' E. 77.2 feet to a stake; thence N. 52°-24' W. 233.0 feet to an iron pipe in the center of said Sandusky Street; thence with the center of said Sandusky Street N. 36°-21' E. 76.5 feet to the place of beginning.

Containing 0.42 of an acre more or less.

D.L.D. #1
PAGE 46



DLD
FB #1

Mossbarger Survey
Rushsylvania, Ohio

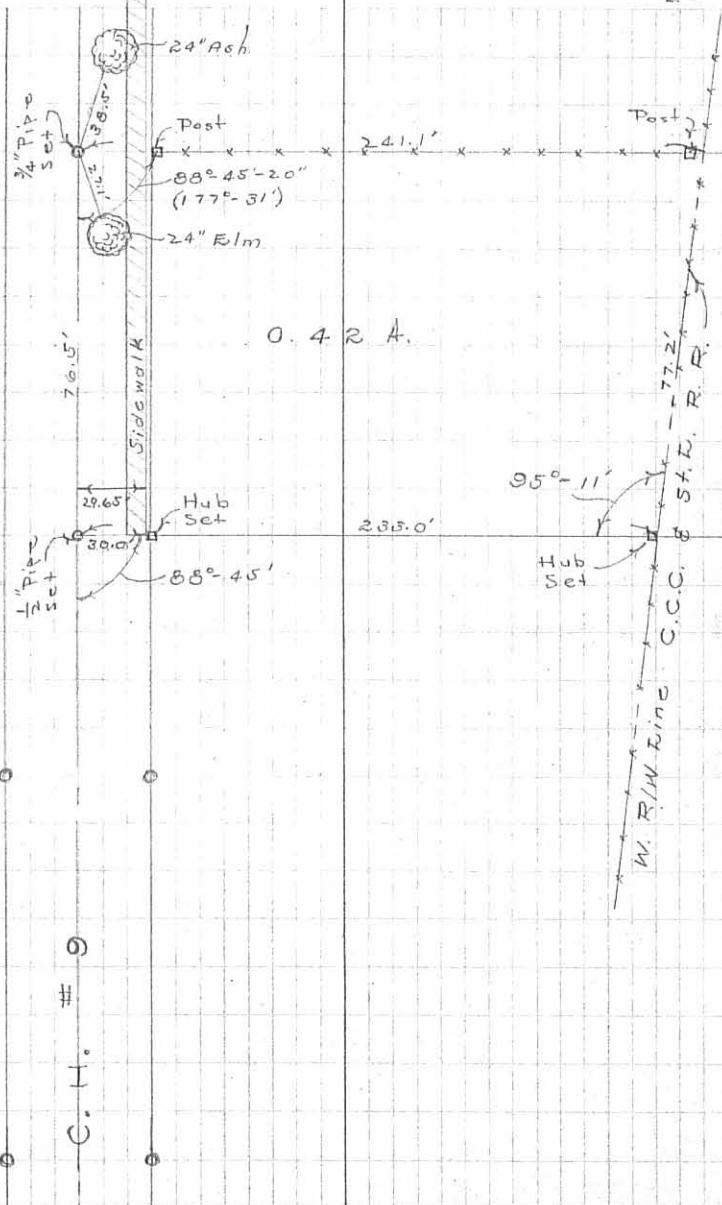
South line at end of sidewalk
as shown

INDEXED ON MAP
3507 5P

D. F. Dodson
C. Nichols

Aug. 29, 1953
95°

46



Griffin Survey Rushsylvania Jan. 1963

0.30 Acre

The following described land in the Village of Rushsylvania, Rushcreek Township, Logan County, Ohio and being in V.M.S. 9909

Beginning at an iron in the center of State Route Number 274 (Also known as Mill Street.) and the center of County Road Number 9 (Also known as Sandusky Street) Thence with the center of Sandusky Street S. 36 - 26 W. 777.80 feet to an iron at the S.E. corner of Ruth R. Kramer's 0.38 acre tract. Said iron being the true beginning point of this survey.

Thence with the south side of said Kramer 0.38 acre tract N. 66 - 17 W. 194.70 feet to an iron in the east line of ~~W. 36 - 26 E. 163.95 feet~~ Lillian B. Mc Adams's 3.16 acre tract. The last described line passing an iron at the west side of Sandusky Street at 30.75 feet. (Being 30.00 feet from the center line when measured at right angles)

Thence with the east side of said McAdams 3.16 acre tract S. 36 - 26 W. 68.00 feet to an iron at the N.W. corner of Leslie H. Geeslin's 0.30 acre tract.

Thence with the north side of said Geeslin's 0.30 acre tract S. 66 - 17 E. 194.70 feet to an iron in the center of Sandusky Street. The last described line passing an iron at the west side of Sandusky Street at 163.95 feet (Being 30.00 feet from the center line when measured at right angles.)

Thence with the center line of Sandusky Street N. 36 - 26 E. 68.00 feet to the place of beginning.

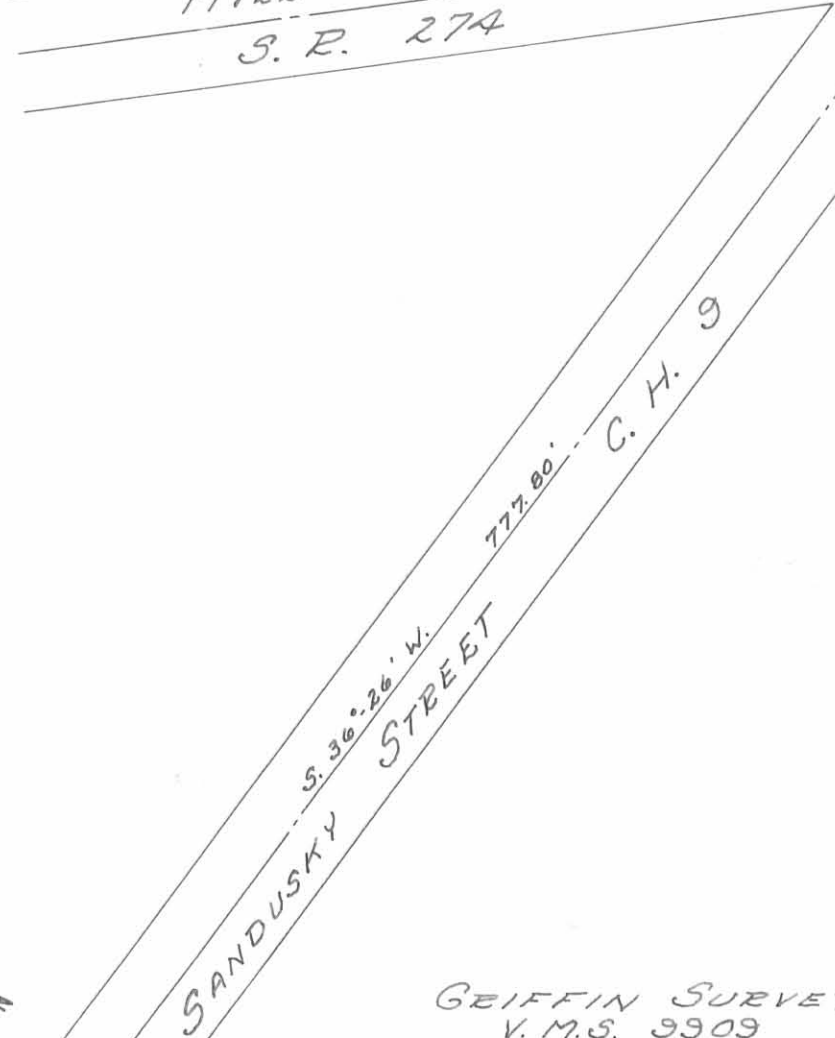
The above described contains 0.30 of one acre.

cc
Logan County Engineer



3507 ^{6D}

INDEXED ON MAP



GRIFFIN SURVEY
 V. M. S. 9909
 VILLAGE OF RUSHSYLVANIA
 RUSHCREEK TOWNSHIP
 LOGAN COUNTY, OHIO
 SURVEYED BY F. F. WRIGHT - JAN. 1963
 DRAWN BY D. E. GILBERT - SEPT. 4, 1963
 SCALE: 1" = 100'

3507 6P

INDEXED ON MAP