

SEWAGE TREATMENT PLANT
 VILLAGE OF RUSHSYLVANIA
 LOGAN COUNTY, OHIO
 1965

SHEET	INDEX DESCRIPTION	Engineering Data
1.	Title Sheet	Plant Type : Extended Aeration Village Population : 601, 1960 Census Design Population : 1000 P.E. Capacity : 100,000 Gal./Day
2.	Village Map	
3.	General Layout	
4.	Oxidation Ditch Detail	
5.	Clarifier Detail	
6.	Stab. Pond Eff. Str.	
7.	Misc. Struc. Detail	

Approved _____ *Donald E. Scamm*
 Date October 4, 1965 Mayor

Approved _____ *Mary C. Patrick*
 Date October 4, 1965 Village Clerk

Approved _____ *George Adelberger*
 Date October 4, 1965 President
 Board of Trustees of Public Affairs

Approved _____ *Eurett E. Culp*
 Date October 4, 1965 Board of Trustees of Public Affairs

Approved _____ *Robert H. Henry*
 Date October 4, 1965 Board of Trustees of Public Affairs

Approved _____ *Chester R. Kurz, P.E.*
 Date October 4, 1965 1965 Civil Engineer

Approved _____ *Clayton H. Stimmel, P.E.*
 Date October 1, 1965 1965 Civil Engineer

Approved _____
 Date _____ 1965 Chief Engineer State of Ohio
 Department of Health

Approved _____
 Date _____ 1965

Approved _____
 Date _____ 1965

Approved _____
 Date _____ 1965

Stimmel & Associates, Engineers
 Wapakoneta, Ohio



RUSHSYLVANIA
1965

Scale : 1" = 200'

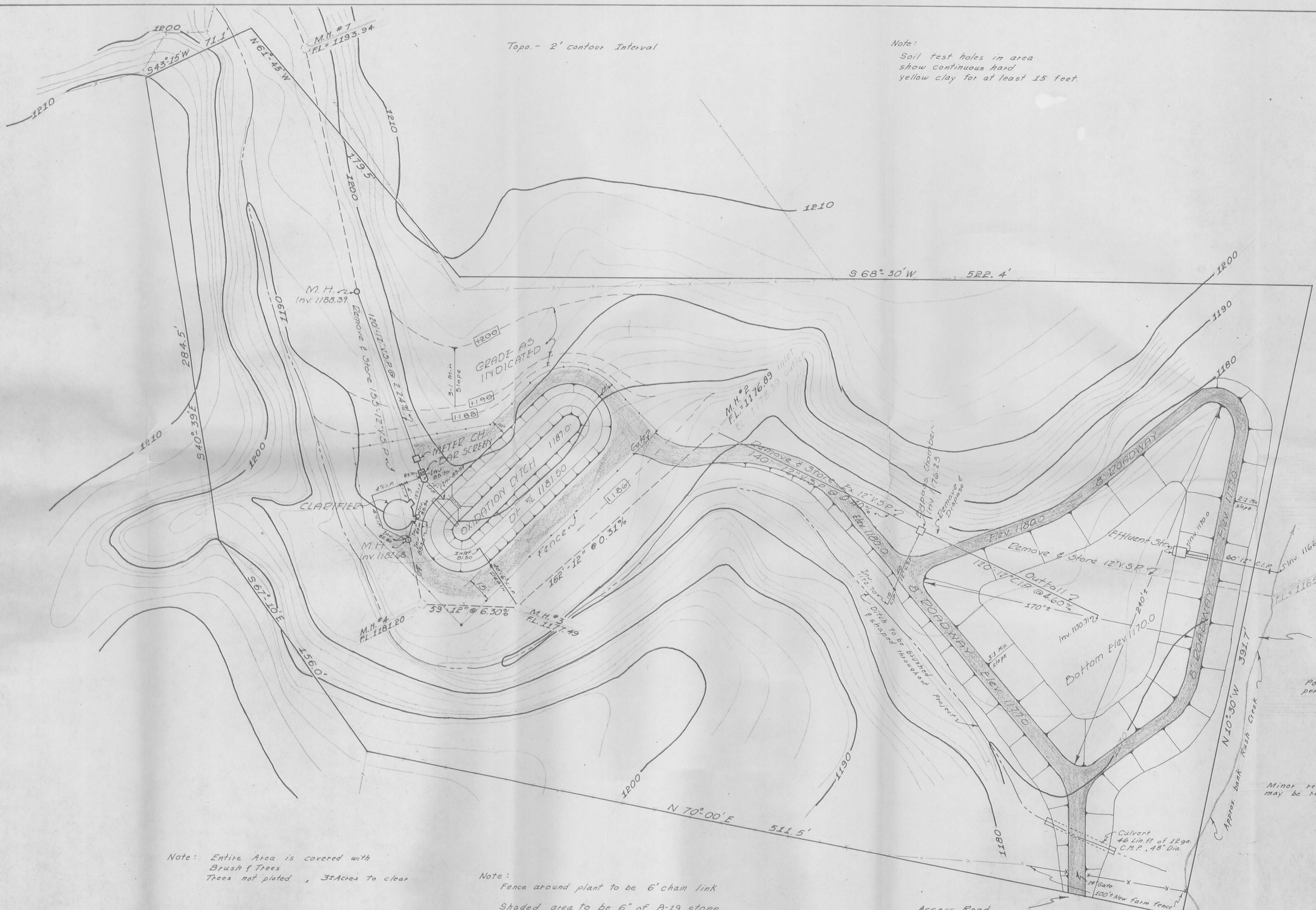
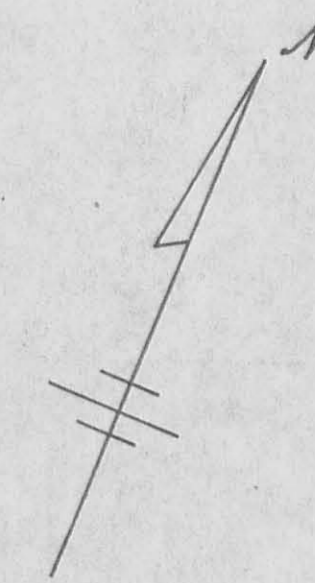
Existing Collection System
 o Manhole
 --- Sewer Line, Size as shown

INDEXED ON MAP
 3961 1P-2

Topo. - 2' contour Interval

Note:

Soil test holes in area show continuous hard yellow clay for at least 15 feet.



Note:

All topsoil in pond area shall be removed before construction of pond. Pond shall be constructed of clay material removed during general excavation and shall be compacted. Banks shall be grass to water line. Excess earth spoil shall be disposed of around Village as directed at along Logan County Highways near-by for widening if approved by the County Engineer.

Stabilization Pond Capacity at 5 foot depth = 718,000 Gal. 7.18 Day retention

Pond will be made larger if the site permits, as directed by the engineer.

Minor relocation of Rush Creek may be required along pond area.

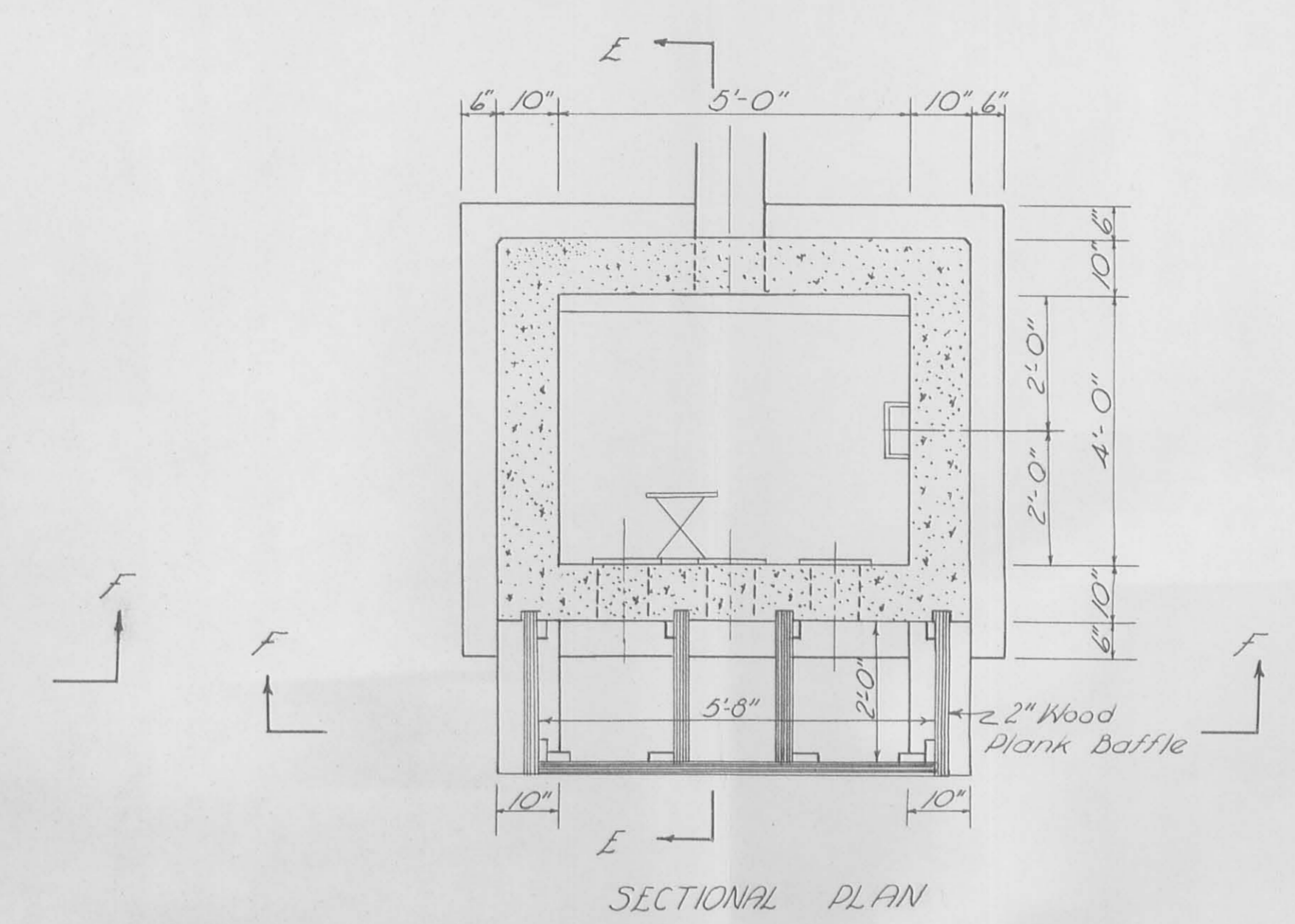
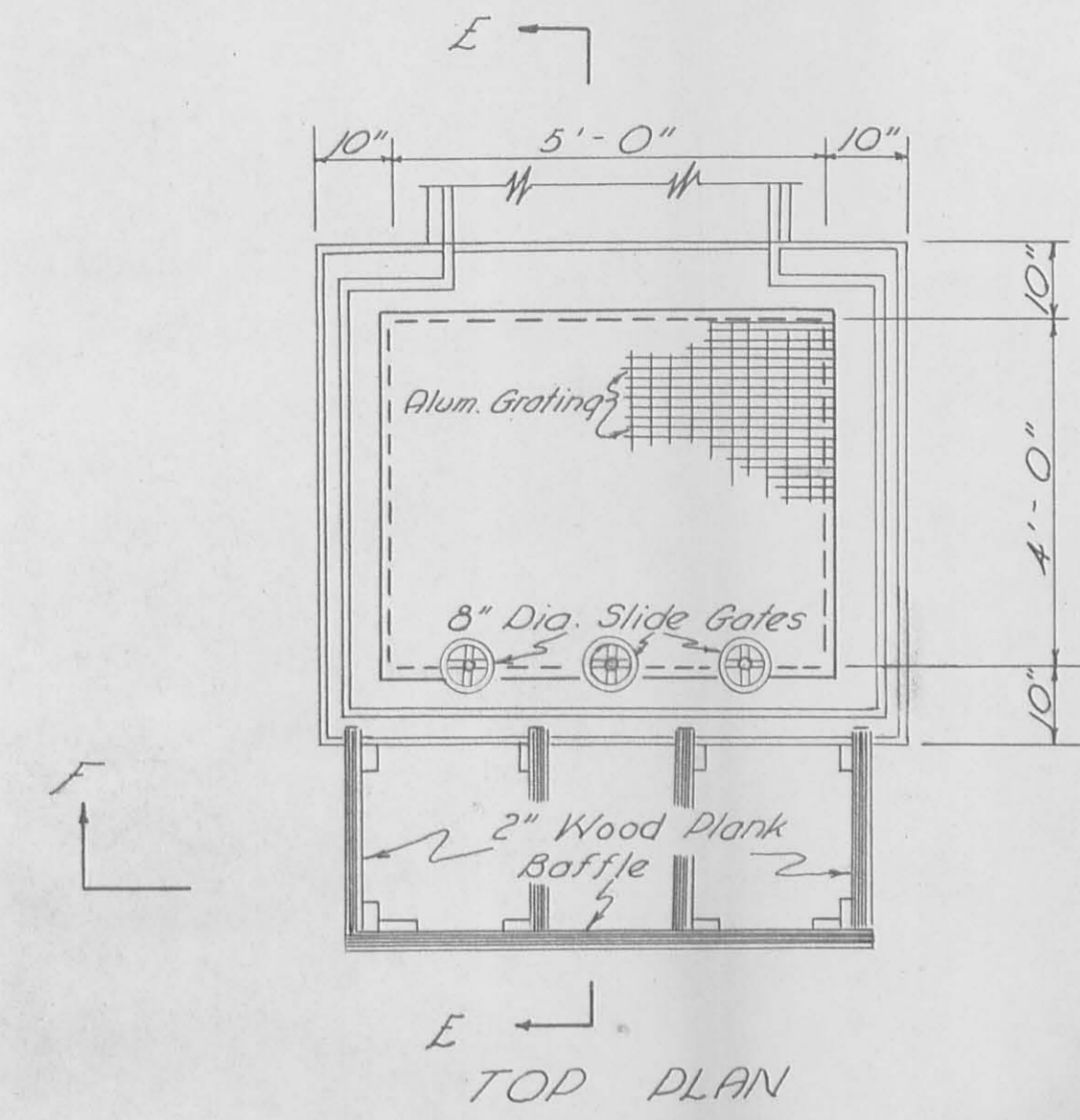
Note: Entire Area is covered with Brush & Trees Trees not plotted, 3± Acres to clear

Note: Fence around plant to be 6' chain link Shaded area to be 6" of B-19 stone

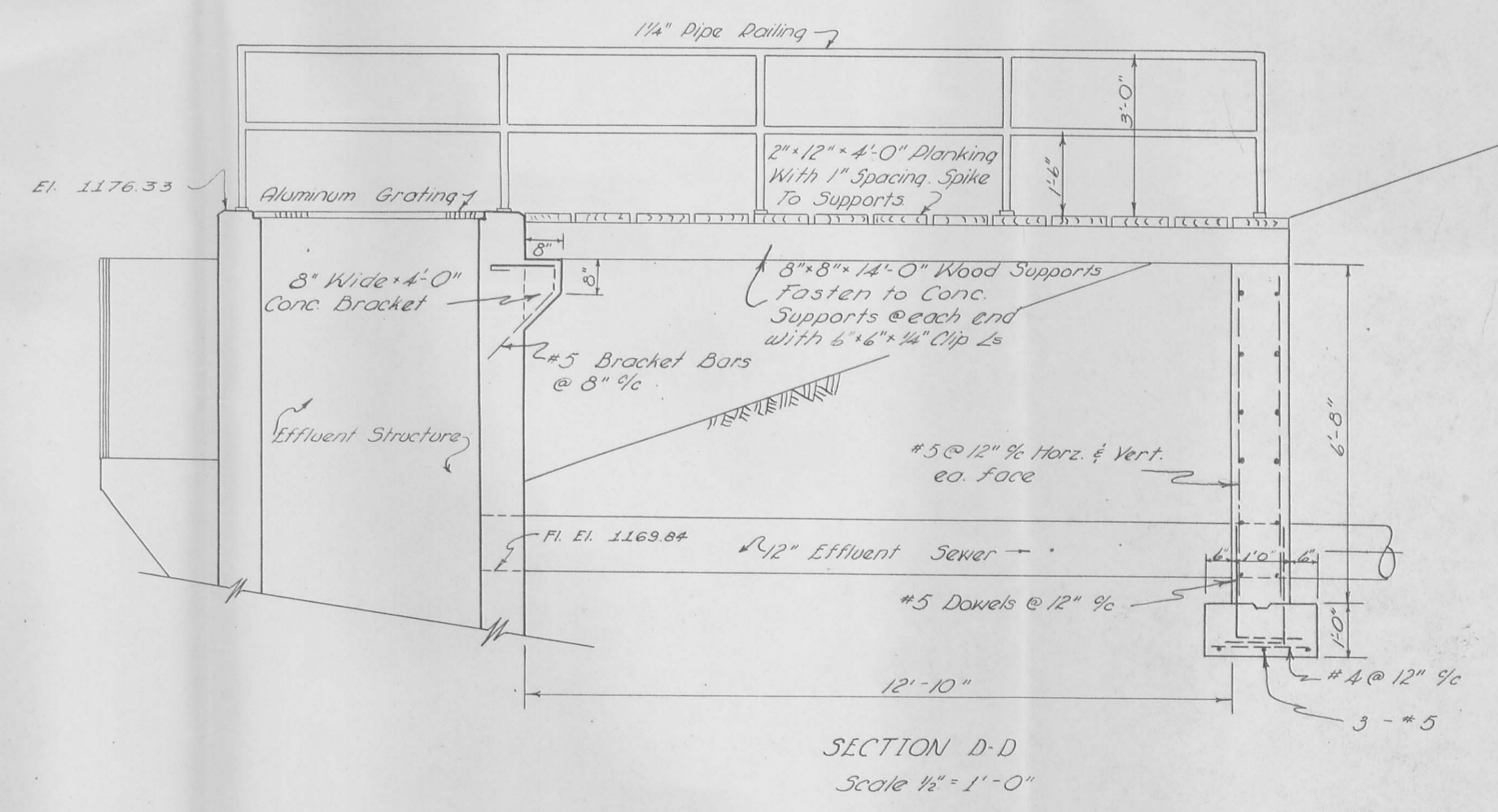
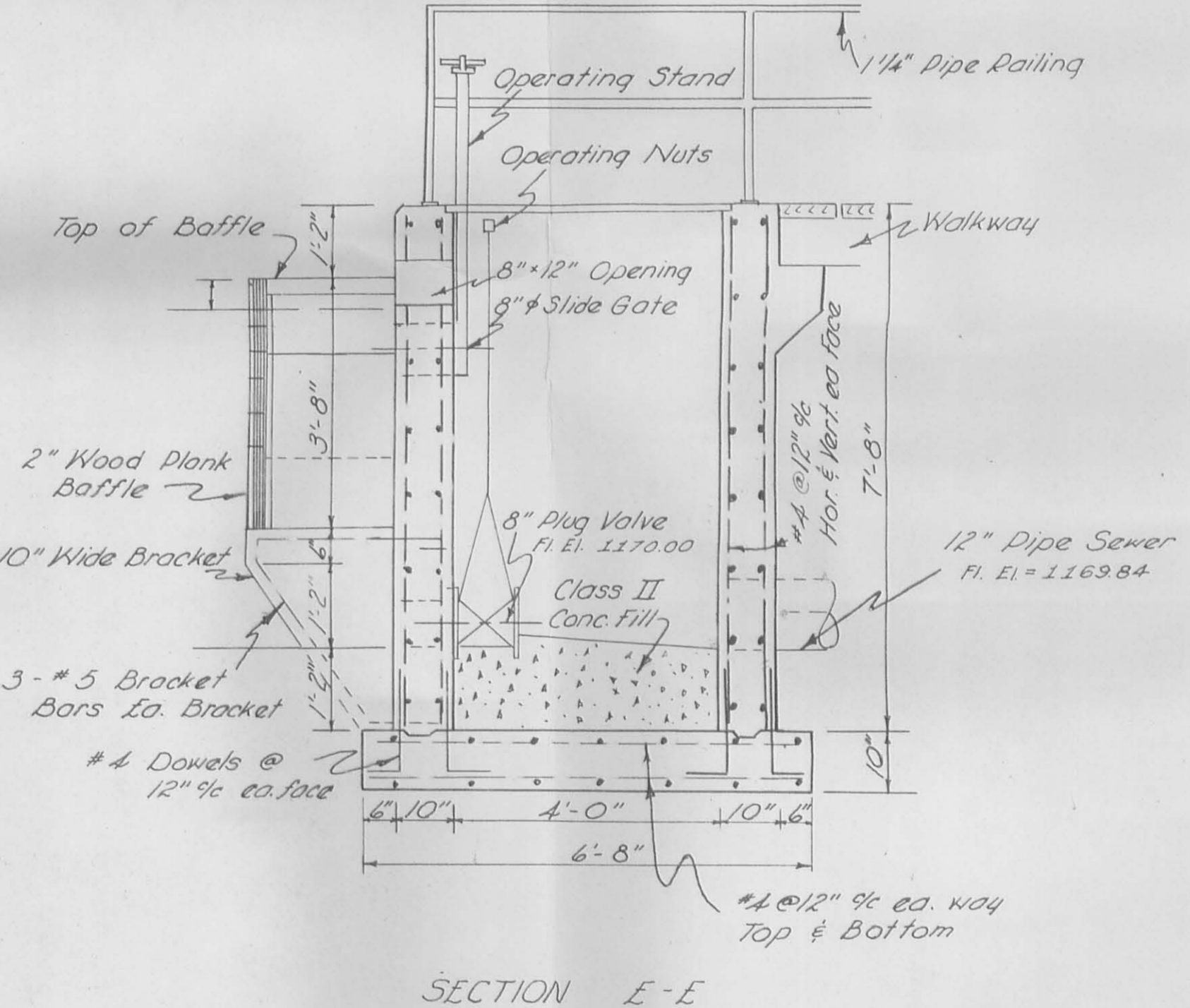
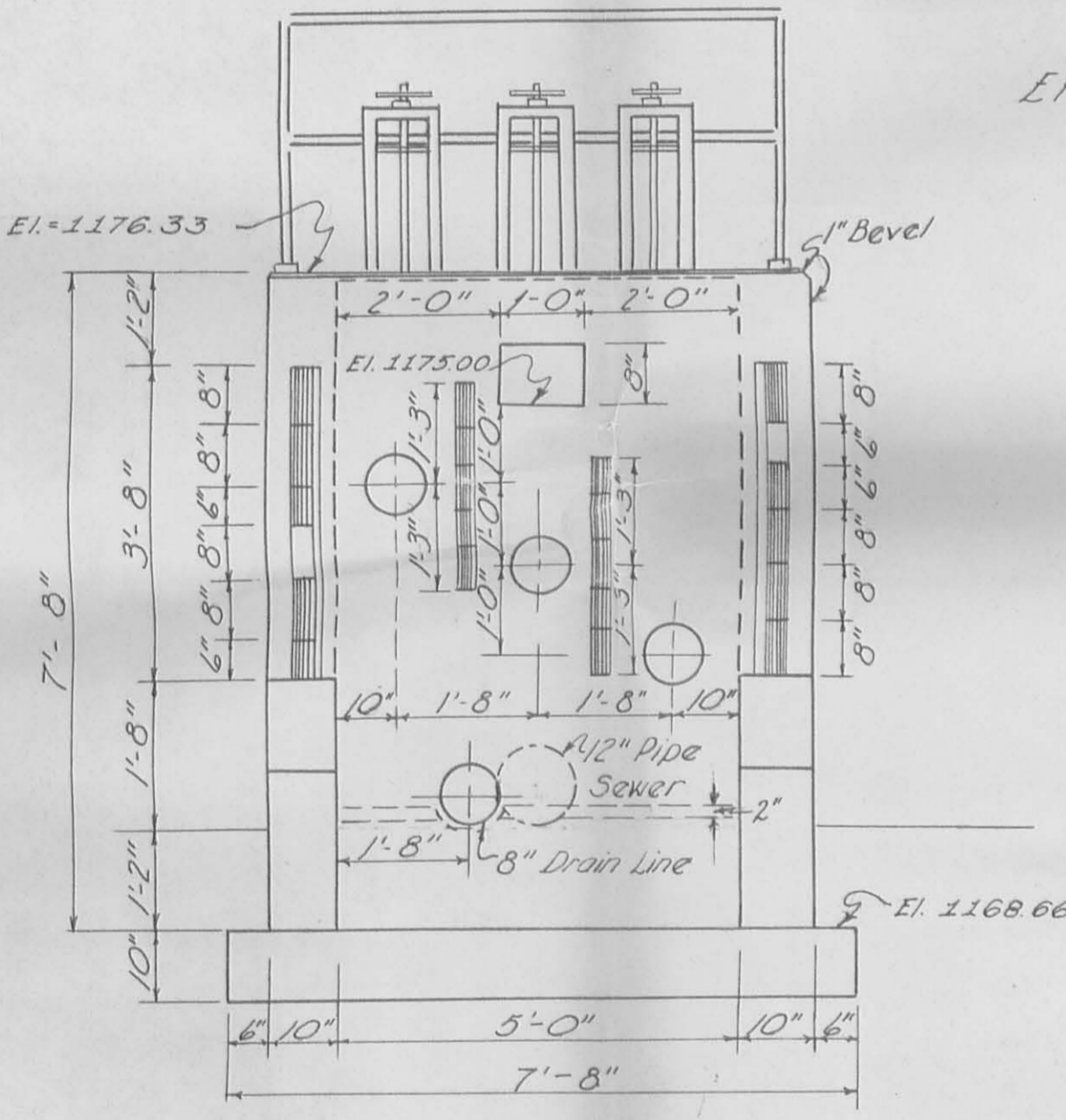
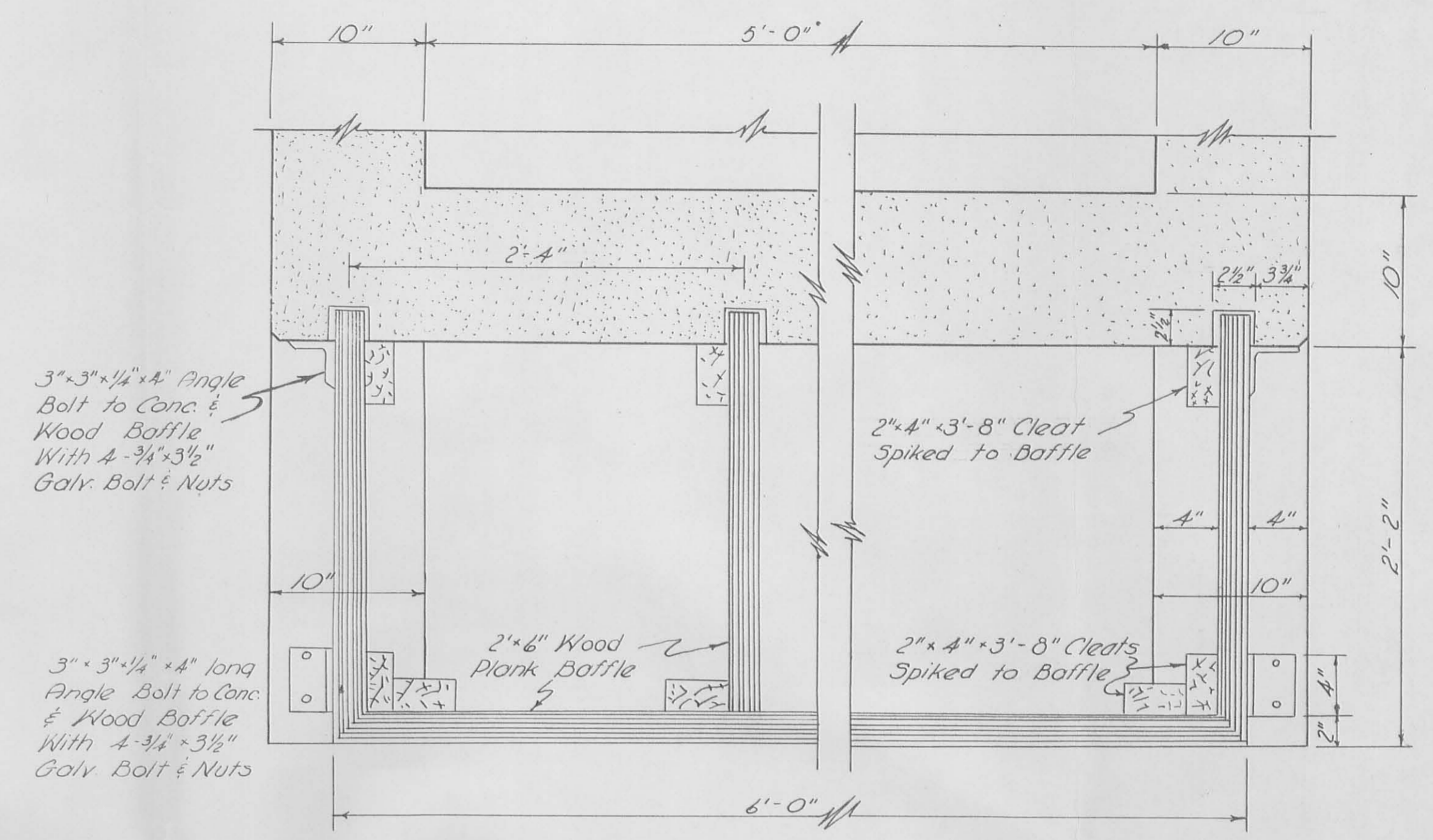
Note: Grade & shape existing road to County Highway No. 5 Length = 475 ft ± Width = 12 feet Cover with B-19 stone, 6" depth Stone = 212 Ton

Access road will be located by engineer.

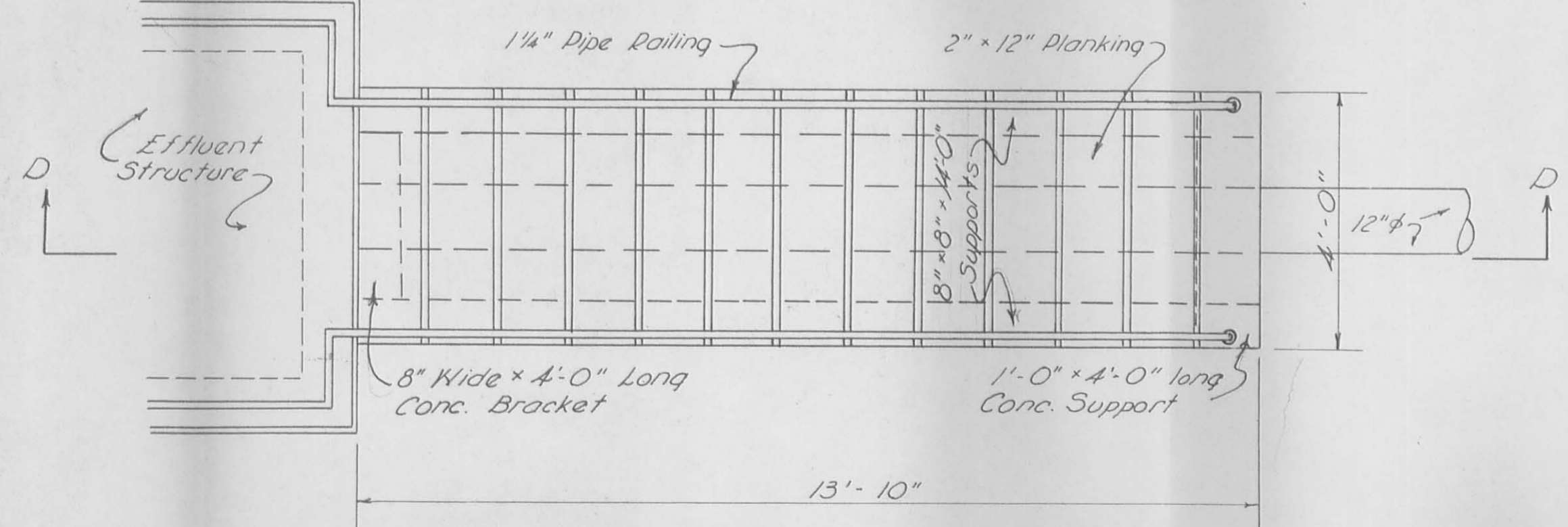
3961 1P3



EFFLUENT STRUCTURE
Scale: 1/2" = 1'-0"

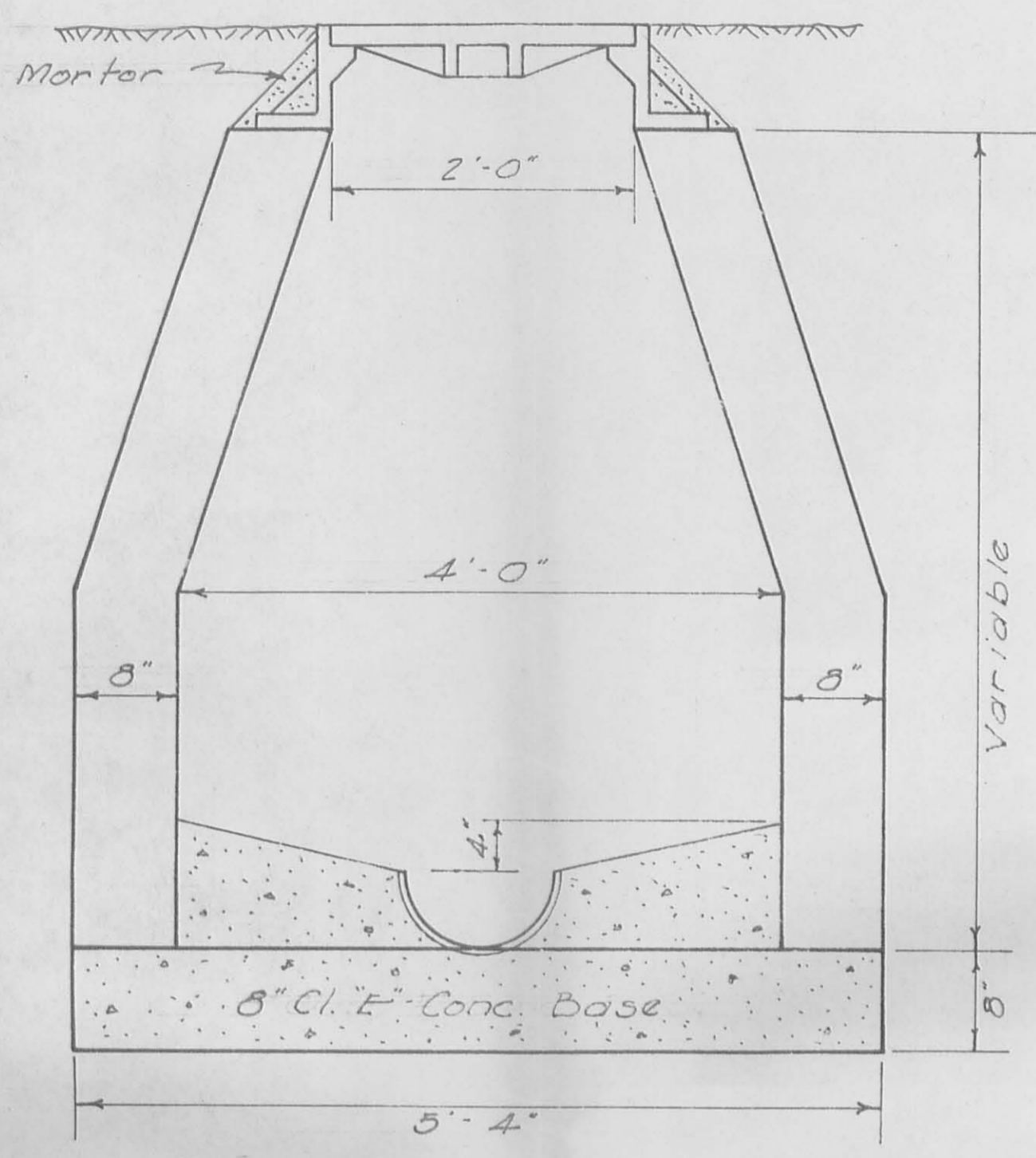


WALKWAY TO EFFLUENT STRUCTURE



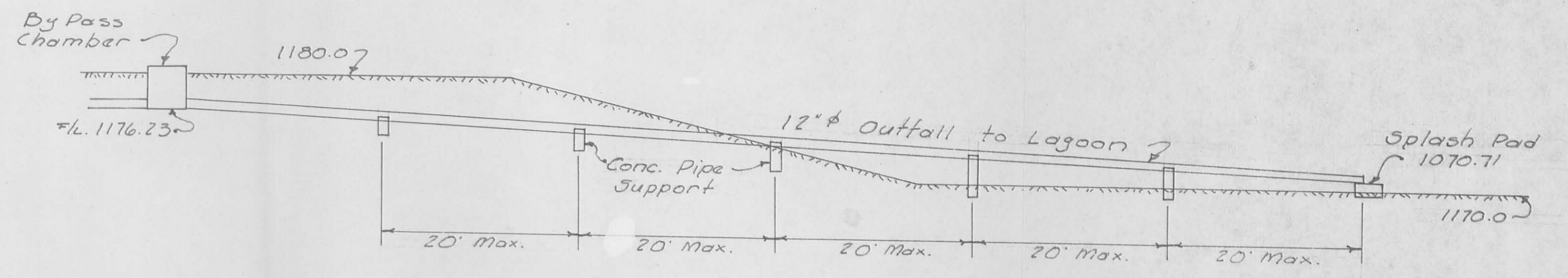
Note: Lumber to be impregnated with "Wolmanizing Salts"

INDEXED ON MAP
2961 P-4



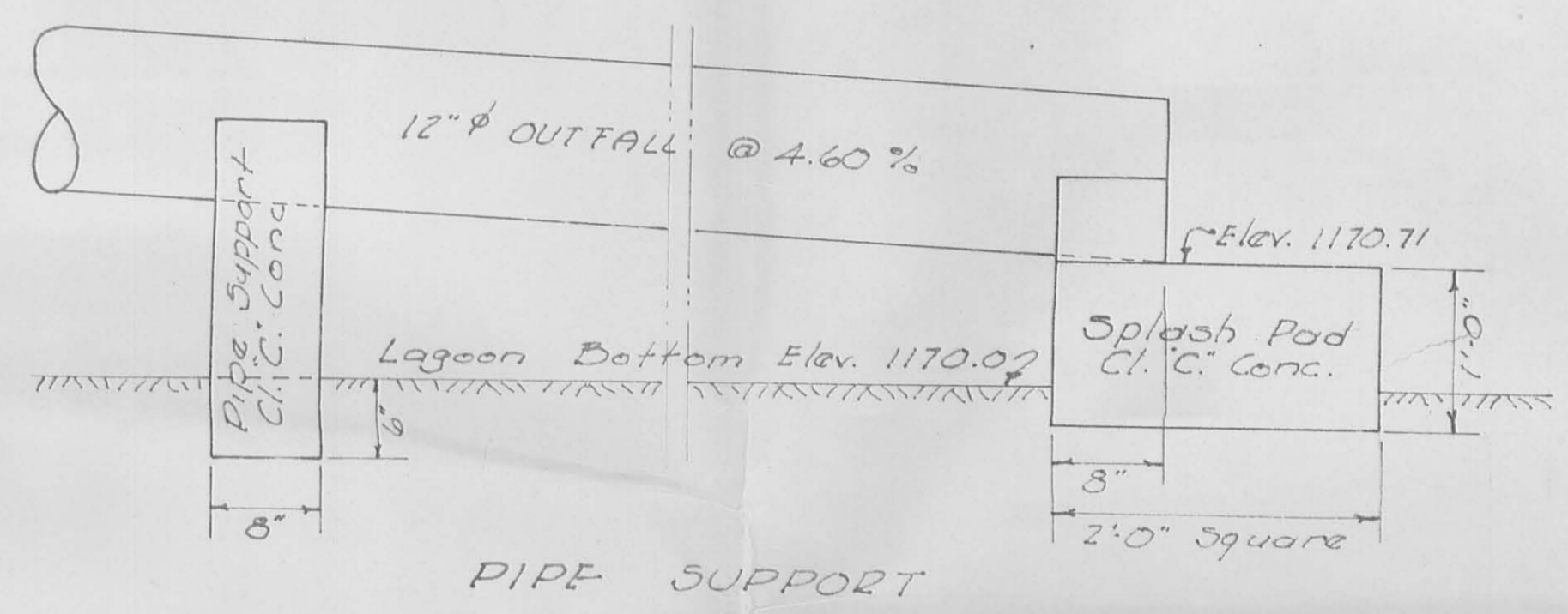
STANDARD MANHOLE

NOTES:
 Manholes may be constructed of brick, conc. blocks, precast conc. rings, or cast in place concrete.
 Min. wall thickness - 6"
 Channel section in the manhole shall be formed in conc. to conform to size of outlet pipe.
 Cast iron frame and cover shall have a min. weight of 275 lbs.

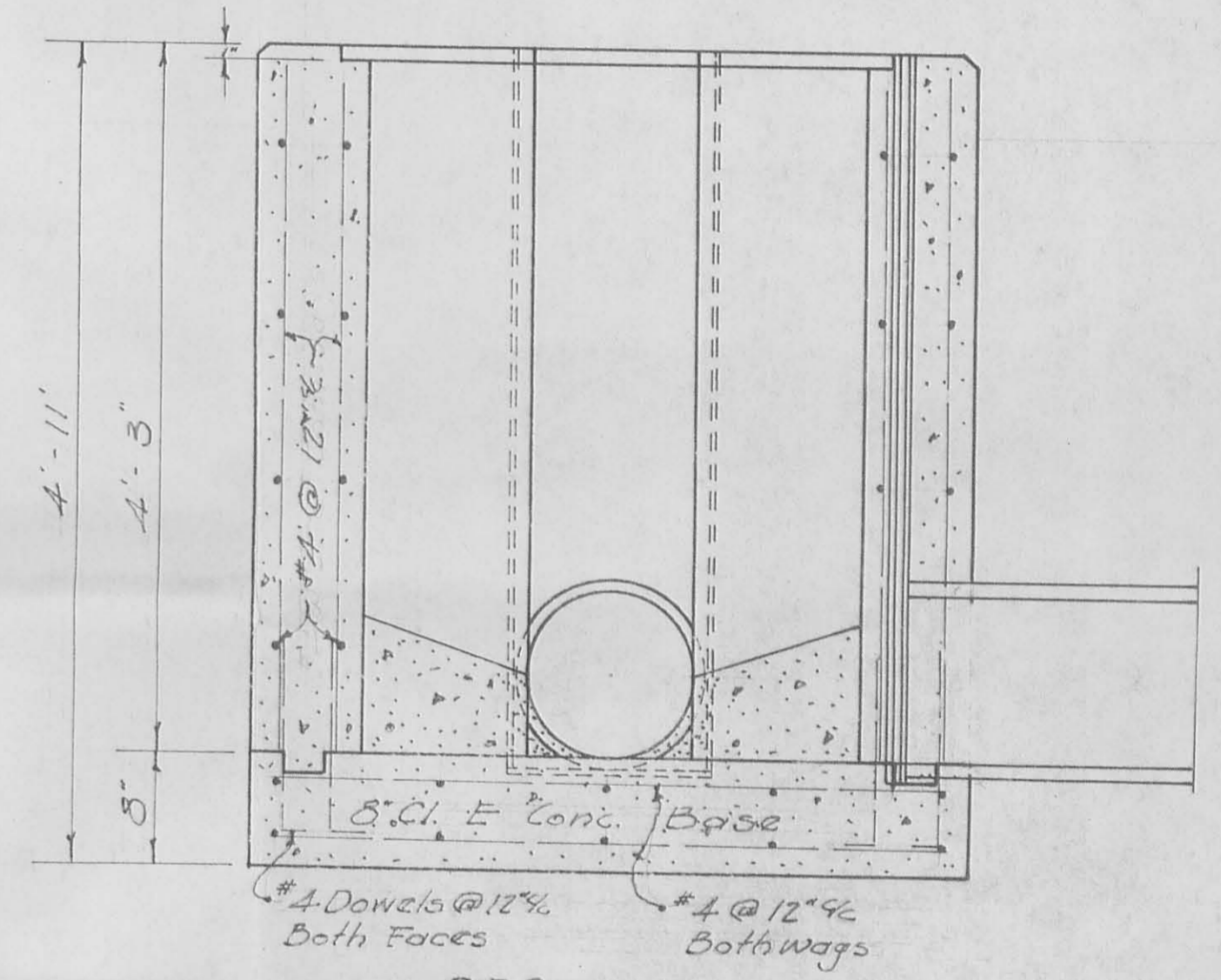


OUTFALL TO LAGOON

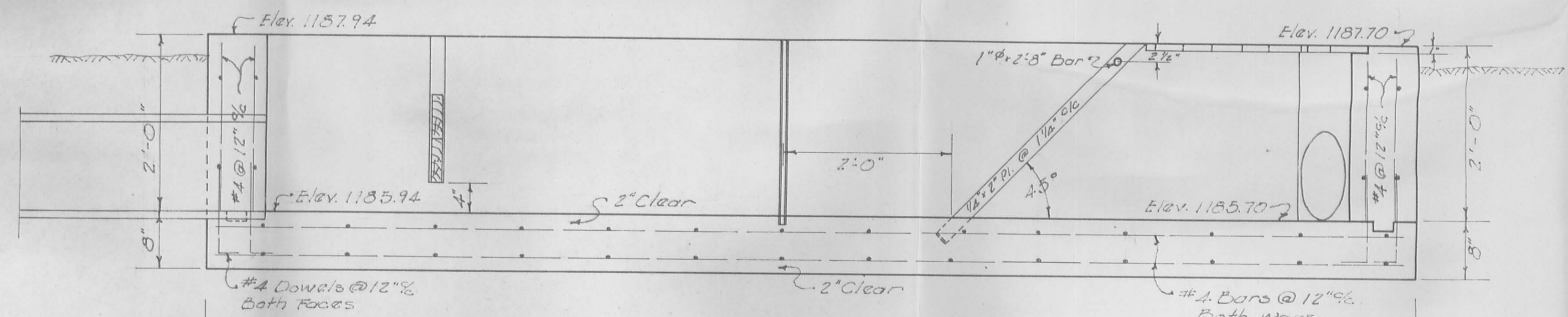
NOTE: One conc. pipe support to be placed at each joint of outfall pipe.



PIPE SUPPORT

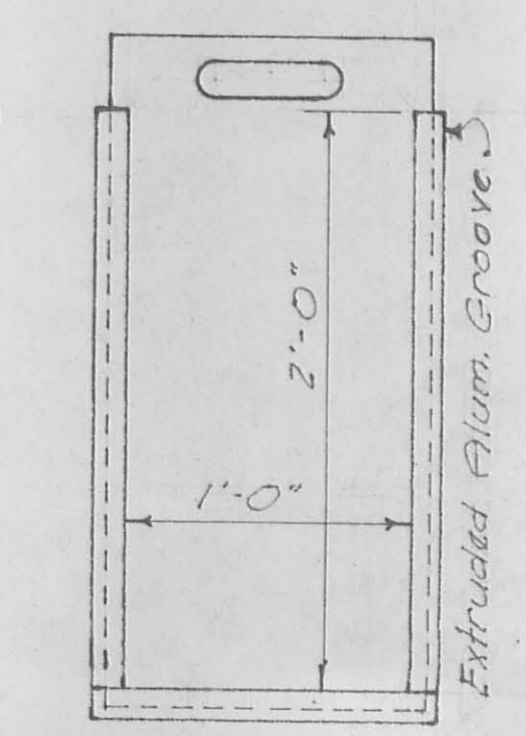
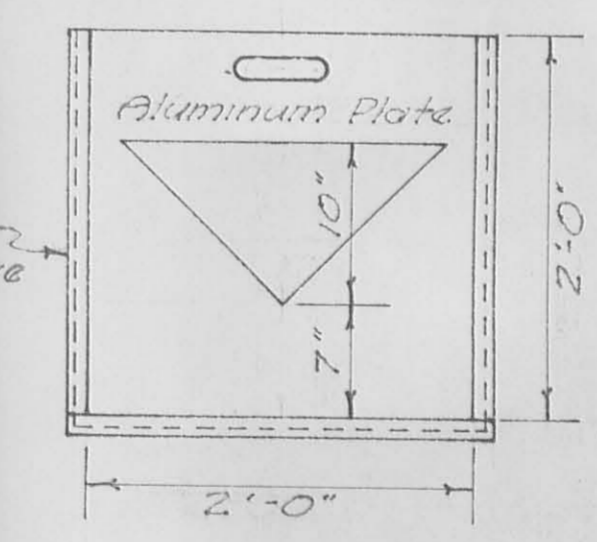


SEC. A-A
 BYPASS CHAMBER

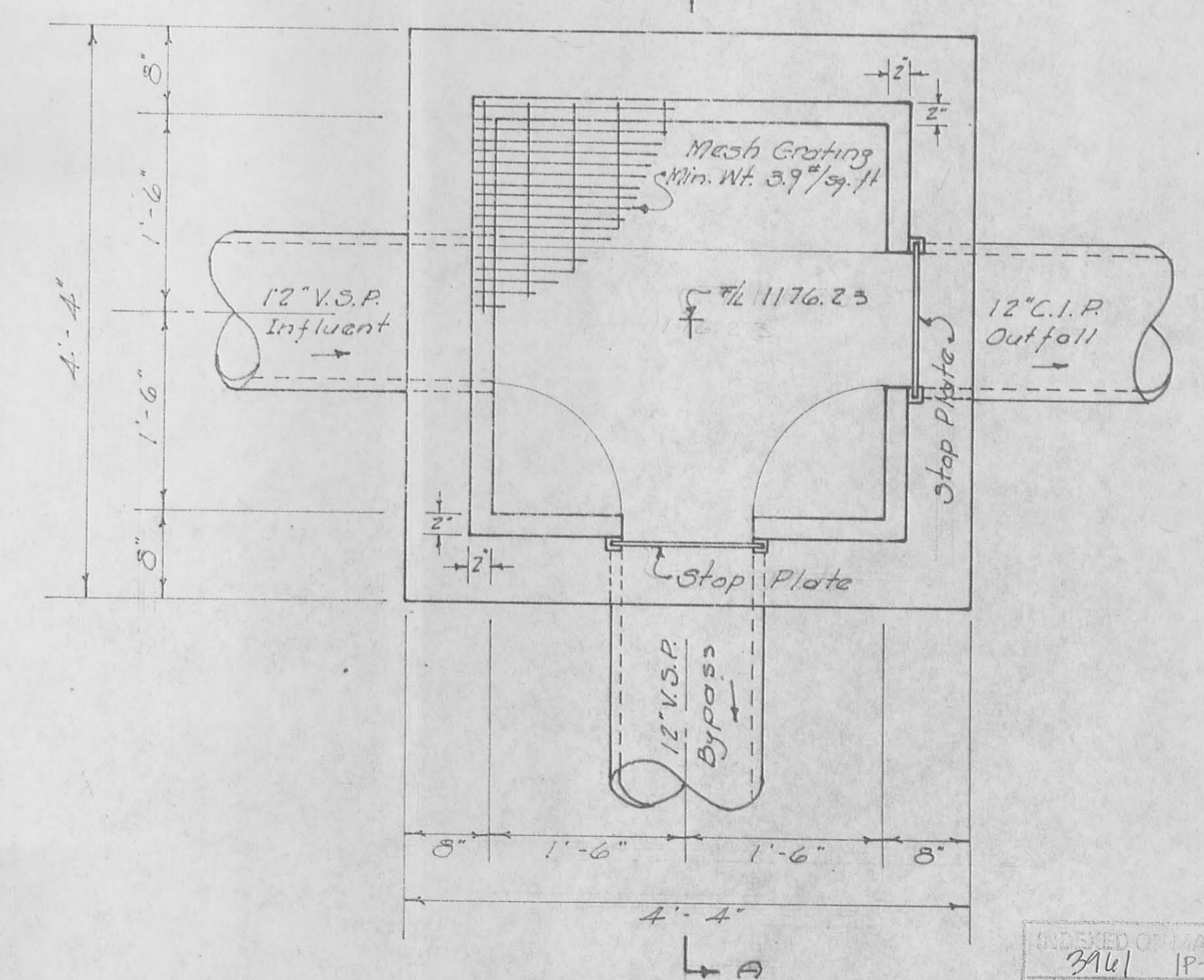


90°-V-NOTCH
 SHARP CRESTED WEIR

SEC. A-A
 SCALE 1"=1'



STOP PLATE
 1/4" Aluminum Plate



METER CHAMBER & BAR SCREEN
 SCALE 1"=1'