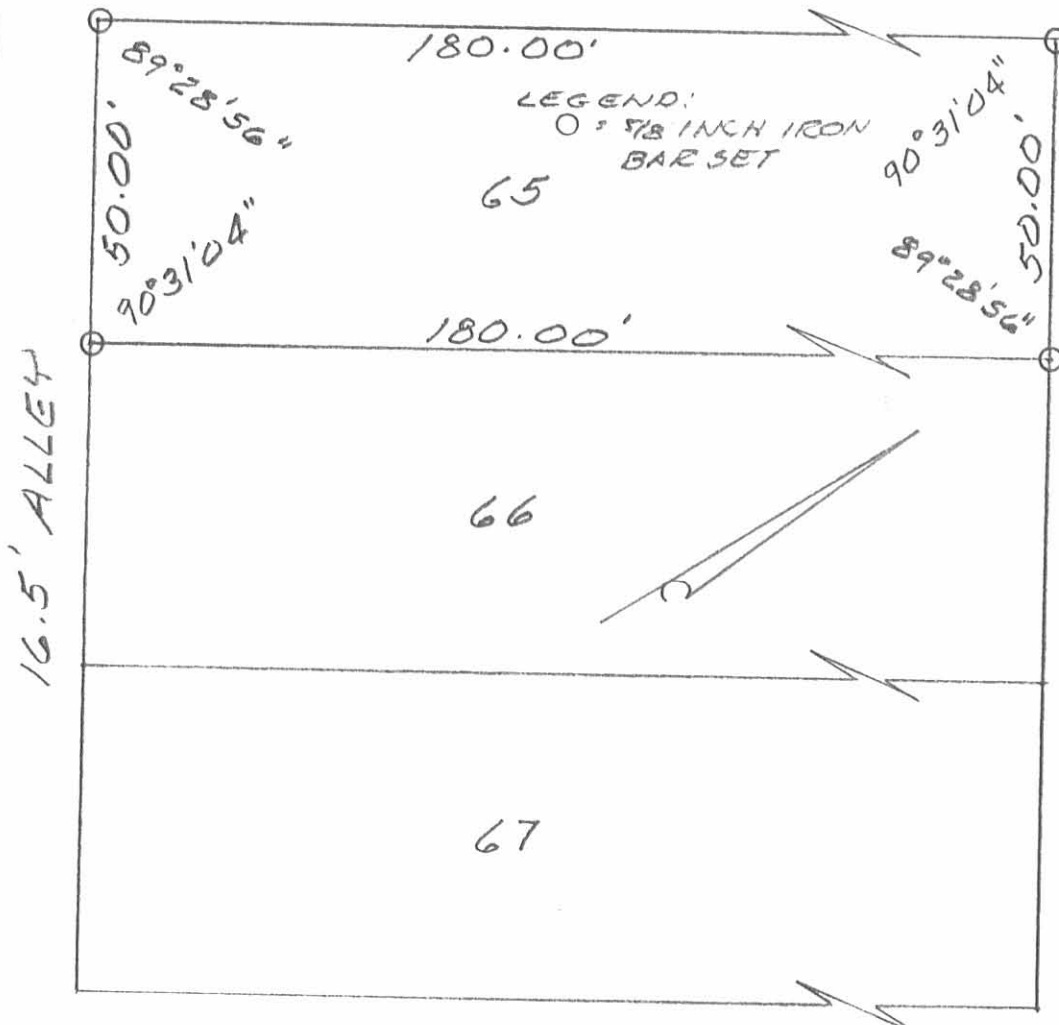


REC'D 5-6-97

SMY

16.5' ALLEY



16.5' ALLEY

RAILROAD STREET (60')

WALNUT STREET (60')

SURVEY OF LOT 12 IN WILSON  
 ADDITION (PLAT CABINET "A" SLIDE 118)  
 ALSO BEING LOT 65 (CONSECUTIVE  
 NUMBERING) IN THE VILLAGE OF  
 RUSHSYLVANIA, V. M. S. 13496, RUSH-  
 CREEK TOWNSHIP, LOGAN COUNTY,  
 OHIO FOR LARRY CHAMBERLAIN  
 ON MAY 5, 1997

SCALE: 1" = 30'



INDEXED ON MAP  
 9130 IP



*Leslie H. Gerslin*

LESLIE H. GERSLIN  
 RUSHSYLVANIA, OH  
 1937/018-7702



1-18-13  
**APPROVED**

# Lee Surveying and Mapping Co., Inc.

Land Surveys • Topography • Subdivisions • Construction Layout

117 N. Madriver St.  
Bellefontaine OH 43311



Phone: (937) 593-7335  
Fax: (937) 593-7444  
surveys@lsminc.us

## McCLAIN 0.062 ACRE

Lying in Virginia Military Survey 13446, Rushcreek Township, Village of Rushsylvania, Logan County, Ohio.

Being all of the Minnie P. McClain and Edward T. McClain part of Lot 15 of the Rushsylvania Original Plat (Plat Cabinet A, Slide 167) and being deeded and described in Official Record 701, Page 474 of the Logan County Records of Deeds and being more particularly described as follow:

Beginning at a 5/8 inch iron rod found at the east corner of said Lot 15, at the intersection of the south right-of-way of Railroad Street (60 feet wide) and the west right-of-way of a 16.5 feet wide alley.

THENCE, with the west right-of-way of said alley, S 36°-36'-15"W, a distance of 50.15 feet to a 5/8 inch iron rod set.

THENCE, with the north right-of-way of a 6 feet wide alley, N 53°-59'-57"W, a distance of 40.74 feet to a 5/8 inch iron rod set.

THENCE, with the east right-of-way of the Conrail Railroad, a curve to the left having a central angle of 1°-39'-46", a radius of 1959.90 feet, an arc length of 56.88 feet, a tangent of 28.44 feet, a chord bearing N 08°-04'-17"E, a distance of 56.87 feet to a 5/8 inch iron rod set.

THENCE, with the south right-of-way of Railroad Street, S 53°-54'-49"E, a distance of 67.91 feet to the point of beginning.

Containing 0.062 acre.

Property is subject to any and all previous easements and rights-of-way of record.

The basis for bearings is the south right-of-way of Railroad Street, being S 53°-54'-49"E, and all other bearings are from angles and distances measured in a field survey by Lee Surveying and Mapping Co., Inc. on January 4, 2013.

Description prepared by:



ORIGINAL STAMP IN GREEN

William K. Bruce  
Professional Surveyor 7437  
January 7, 2012  
Revised January 16, 2013

L-5139

INDEXED ON MAP  
9/30 2D-1

# Lee Surveying and Mapping Co., Inc.



**APPROVED**  
1-18-13

Land Surveys • Topography • Subdivisions • Construction Layout

117 N. Madriver St.  
Bellefontaine OH 43311



Phone: (937) 593-7335  
Fax: (937) 593-7444  
surveys@lsminc.us

## McCLAIN 0.106 ACRE

Lying in Virginia Military Survey 13446, Rushcreek Township, Village of Rushsylvania, Logan County, Ohio.

Being all of the Minnie P. McClain and Edward T. McClain part of Lots 13 and 14 of the Rushsylvania Original Plat (Plat Cabinet A, Slide 167) and being deeded and described in Official Record 701, Page 474 of the Logan County Records of Deeds and being more particularly described as follow:

Beginning at a 5/8 inch iron rod set at the east corner of said Lot 14 at the intersection of the west right-of-way of a 16.5 feet wide alley and the south line of a 6 feet wide alley.

THENCE, with the west right-of-way of the said 16.5 feet wide alley, S 36°-36'-15"W, a distance of 100.30 feet to a 5/8 inch iron rod set.

THENCE, with the north right-of-way of a 6 feet wide alley, N 54°-10'-22"W, a distance of 21.97 feet to a 5/8 inch iron rod set.

THENCE, with the east right-of-way of the Conrail Railroad, with a curve to the left having a central angle of 3°-18'-26", a radius of 1929.90 feet, an arc length of 111.40 feet, a tangent of 55.71 feet, a chord bearing N 10°-18'-01"E, a distance of 111.38 feet to a 5/8 inch iron rod set.

THENCE, with the south right-of-way of a 6 feet wide alley, S 53°-59'-57"E, a distance of 71.33 feet to the point of beginning.

Containing 0.106 acre.

Property is subject to any and all previous easements and rights-of-way of record.

The basis for bearings is the south right-of-way of Railroad Street, being S 53°-54'-49"E, and all other bearings are from angles and distances measured in a field survey by Lee Surveying and Mapping Co., Inc. on January 4, 2013.

Description prepared by:

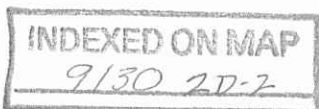


ORIGINAL STAMP IN GREEN

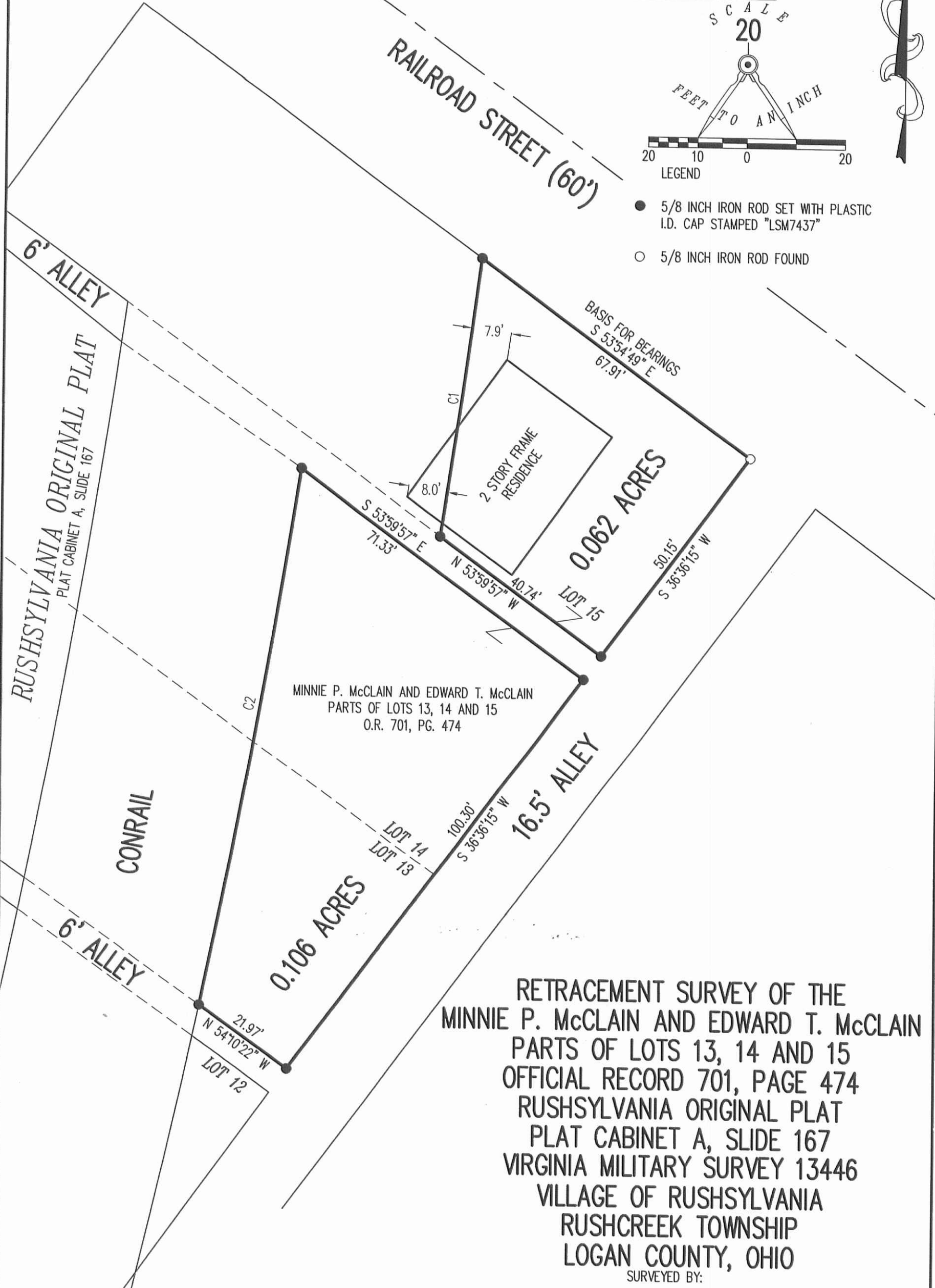
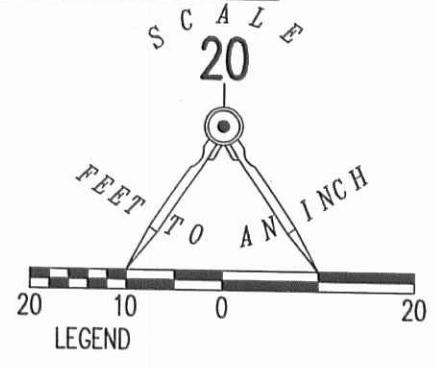
*William K. Bruce*

William K. Bruce  
Professional Surveyor 7437  
January 7, 2012  
Revised January 16, 2013

L-5139



CURVE	DELTA ANGLE	RADIUS	ARC LENGTH	TANGENT	CHORD BEARING	CHORD LENGTH
C1	1°39'46"	1959.90'	56.88'	28.44'	N 08°04'17" E	56.87'
C2	3°18'26"	1929.90'	111.40'	55.71'	N 10°18'01" E	111.38'



*William K. Bruce*  
 WILLIAM K. BRUCE  
 PROFESSIONAL SURVEYOR 7437  
 JANUARY 4, 2013

COPYRIGHT 2013 BY:  
**LEE SURVEYING & MAPPING CO., INC.**  
 117 North Madriver Street  
 BELLEFONTAINE, OHIO 43311  
 (937) 593-7335  
 WWW.LSMINC.US  
 surveys@lsminc.us

2 WORKING DAYS  
**BEFORE YOU DIG**  
 CALL TOLL FREE **800-362-2764**  
 OHIO UTILITIES PROTECTION SERVICE

**INDEXED ON MAP**  
 9130 2P