

2-16-01 OK gch

Lee Surveying and Mapping Co., Inc.

Land Surveys • Topography • Subdivisions • Construction Layout

117 N. Madriver St.
Bellefontaine OH 43311



Phone: (937) 593-7335
Fax: (937) 593-7444

JOHNSON 0.243 ACRES

Lying in the Village of Rushsylvania, Rushcreek Township, Logan County, Ohio.

Being part of Lot 145 and all of Lot 151 of the Isaac Doran Addition as platted in Plat Cabinet A, Slide 171 of the Logan County Records of Plats and being more particularly described as follows:

Beginning at a 5/8 inch iron rod set at the northeast corner of Lot 151.

THENCE, with the east line of Lot 151 and the west right-of-way line of Vine Street (60 feet wide), S 18°-22'-21" W, a distance of 150.00 feet to a 5/8 inch iron rod set.

THENCE, with the south line of Lots 151 and 145 and the north line of a 16.5 feet wide alley, N 71°-37'-01" W, a distance of 70.51 feet to a 5/8 inch iron rod set.

THENCE, N 18°-22'-21" E, a distance of 150.00 feet to a 5/8 inch iron rod set.

THENCE, with the south right-of-way line of Euclid Street (60 feet wide) and the north line of Lots 145 and 151, S 71°-37'-01" E, a distance of 70.51 feet to the point of beginning.

Containing 0.243 acre.

The basis for bearings is the center-line of Euclid Street being S 71°-37'-01" E, and all other bearings are from angles and distances measured in a field survey by Lee Surveying and Mapping Co., Inc. on January 30, 2001.

Description prepared by:

A handwritten signature in black ink, appearing to read 'J. Lee', is written over the typed name.

Jeffrey I. Lee
Professional Surveyor 6359

February 9, 2001

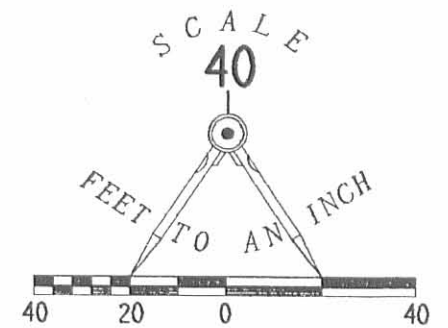
Revised: February 14, 2001



L-3094

ORIGINAL STAMP IN GREEN





LEGEND:
● 5/8 INCH IRON ROD SET

SURVEY OF 0.243 ACRES OUT OF THE
CLYDE DANIEL JOHNSON AND RITA MARIE JOHNSON
ORIGINAL LOTS 145 AND 151
OF THE ISAAC DORAN ADDITION
PLAT CABINET A, SLIDE 171
OFFICIAL RECORD 186, PAGE 955
VILLAGE OF RUSHSYLVANIA
RUSHCREEK TOWNSHIP
LOGAN COUNTY, OHIO

SURVEYED BY:
[Signature]



JEFFREY I. LEE
PROFESSIONAL SURVEYOR 6359
JANUARY 30, 2001
REVISED: FEBRUARY 14, 2001
COPYRIGHT 2001 BY:
LEE SURVEYING & MAPPING CO., INC.
117 North Madriver Street
BELLEFONTAINE, OHIO 43311
(937) 593-7335
D-395 DANJOHN L-3094-3

2 WORKING DAYS
BEFORE YOU DIG
CALL TOLL FREE **800-362-2764**
OHIO UTILITIES PROTECTION SERVICE.

INDEXED ON MAP
9355 1P

8-25-17

Lee Surveying and Mapping Co., Inc.

Land Surveys • Topography • Subdivisions • Construction Layout



117 N. Madriver St.
Bellefontaine OH 43311

Phone: (937) 593-7335
Fax: (937) 593-7444
surveys@lsminc.us

JOHNSON 0.281 ACRE

Lying in the Village of Rushsylvania, Rushcreek Township, Logan County, Ohio.

Being all of the Clyde Daniel Johnson and Rita Marie Johnson Lot 128 and part of Lot 132 of the Isaac Doran Addition (Plat Cabinet A, Slide 171) as deeded in Official Record 186, Page 955 of the Logan County Records of Deeds and being more particularly described as follows:

Beginning on a 5/8 inch iron rod set on the intersection of the south right-of-way of Euclid Street (60 feet wide) and the east right-of-way of Union Street (60 feet wide) at the northwest corner of Lot 128.

THENCE, with the south right-of-way of Euclid Street and the north lines of Lots 128 and 132, S 71°-45'-01"E, a distance of 78.69 feet to a 5/8 inch iron rod set.

THENCE, S 17°-08'-31"W, a distance of 149.50 feet to a 5/8 inch iron rod set on the south line of Lot 132 and the north right-of-way of a 16.5 feet wide alley.

THENCE, with the south lines of Lots 132 and 128 and the north right-of-way of said alley, N 71°-37'-01"W, a distance of 85.16 feet to a 5/8 inch iron rod set on the east right-of-way of Union Street at the southwest corner of Lot 128.

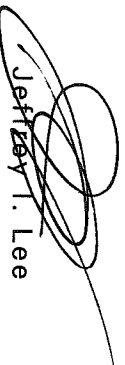
THENCE, with the east right-of-way of Union Street and the west line of Lot 128, N 19°-37'-34"E, a distance of 149.32 feet to the point of beginning.

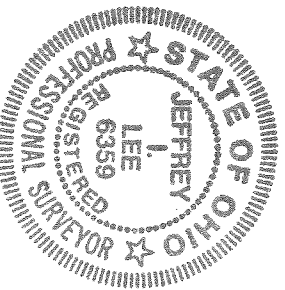
Containing 0.281 acre.

Property is subject to any and all previous easements and rights-of-way of record.

The basis for bearings is the east right-of-way of Union Street, being N 19°-37'-34"E, and all other bearings are from angles and distances measured in a field survey by Lee Surveying and Mapping Co., Inc. on August 10, 2017.

Description prepared by:


Jeffrey I. Lee
Professional Surveyor 6359
August 15, 2017



ORIGINAL STAMP IN GREEN

62800717

INDEXED ON MAP
9355 - 2



Lee Surveying and Mapping Co., Inc.

Land Surveys • Topography • Subdivisions • Construction Layout

117 N. Madriver St.
Bellefontaine OH 43311



Phone: (937) 593-7335
Fax: (937) 593-7444
surveys@lsminc.us

JOHNSON 0.234 ACRE

Lying in the Village of Rushsylvania, Rushcreek Township, Logan County, Ohio.

Being part of the Clyde Daniel Johnson and Rita Marie Johnson Lot 132 and Lot 137 of the Isaac Doran Addition (Plat Cabinet A, Slide 1771) as deeded in Official Record 186, Page 955 of the Logan County Records of Deeds and being more particularly described as follows:

Commencing on a 5/8 inch iron rod set on the intersection of the south right-of-way of Euclid Street (60 feet wide) and the east right-of-way of Union Street (60 feet wide) at the northwest corner of Lot 128.

THENCE, with the south right-of-way of Euclid Street and the north lines of Lots 128 and 132, S 71°-45'-01"E, a distance of 78.69 feet to a 5/8 inch iron rod set at the TRUE POINT OF BEGINNING.

THENCE, with the south right-of-way of Euclid Street and the north lines of Lots 132 and 137, S 71°-45'-01"E, a distance of 71.31 feet to a 5/8 inch iron rod set on the northeast corner of Lot 137 on the west right-of-way of a 16.5 feet wide alley.

THENCE, with the east line of Lot 137 and the west right-of-way of said alley, S 19°-37'-23"W, a distance of 149.66 feet to a 5/8 inch iron rod set on the southeast corner Lot 137 and the north right-of-way of a 16.5 feet wide alley.

THENCE, with the south lines of Lots 137 and 132 and the north right-of-way of said alley, N 71°-37'-01"W, a distance of 64.84 feet to a 5/8 inch iron rod set.

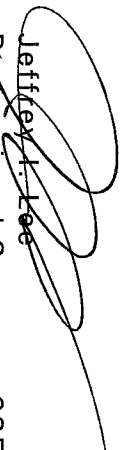
THENCE, N 17°-08'-31"E, a distance of 149.50 feet to the point of beginning.

Containing 0.234 acre.

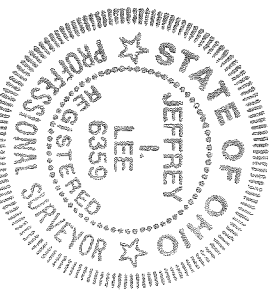
Property is subject to any and all previous easements and rights-of-way of record.

The basis for bearings is the east right-of-way of Union Street, being N 19°-37'-34"E, and all other bearings are from angles and distances measured in a field survey by Lee Surveying and Mapping Co., Inc. on August 10, 2017.

Description prepared by:


Jeffrey L. Lee
Professional Surveyor 6359
August 15, 2017

62800717

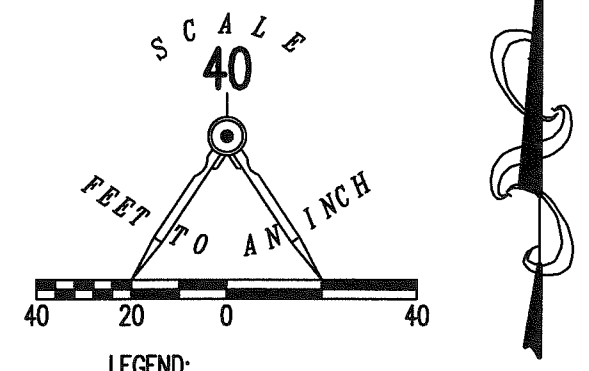
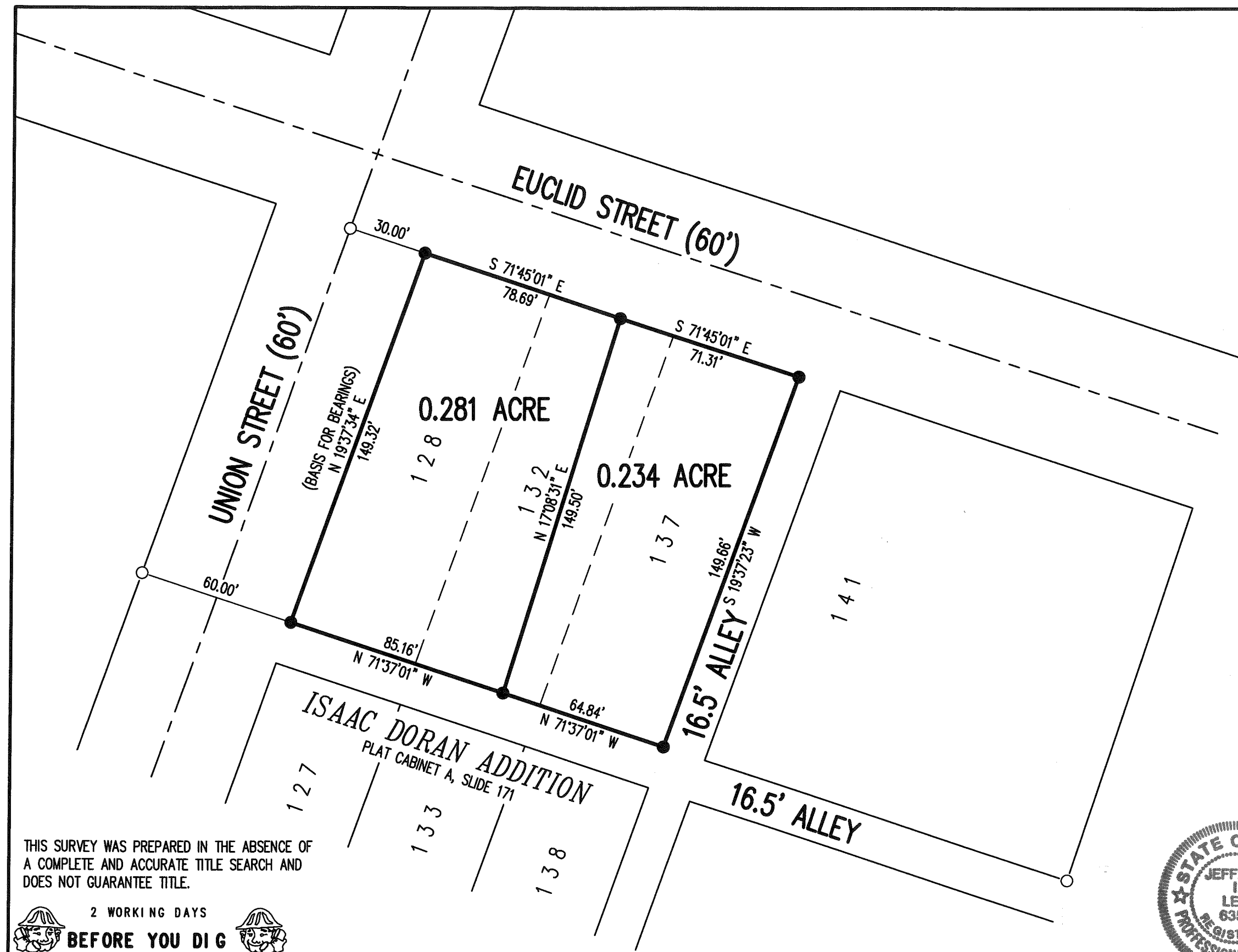


ORIGINAL STAMP IN GREEN

INDEXED ON MAP

93552

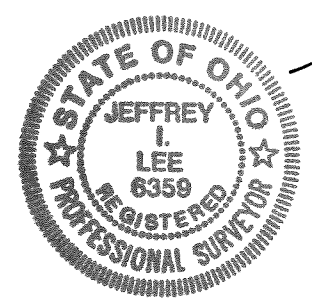
8-25-17
APPROVED



SURVEY OF TWO TRACTS OUT OF
 CLYDE DANIEL JOHNSON AND
 RITA MARIE JOHNSON
 LOTS 128, 132 AND 137
 ISAAC DORAN ADDITION
 PLAT CABINET A, SLIDE 171
 OFFICIAL RECORD 186, PAGE 955
 VILLAGE OF RUSHSYLVANIA
 RUSHCREEK TOWNSHIP
 LOGAN COUNTY, OHIO

SURVEYED BY:

Jeffrey T. Lee
 JEFFREY T. LEE
 PROFESSIONAL SURVEYOR 6359
 AUGUST 10, 2017



ORIGINAL STAMP IN GREEN

COPYRIGHT 2017 BY:
 LEE SURVEYING & MAPPING CO., INC.
 117 North Madriver Street
 BELLEFONTAINE, OHIO 43311
 (937) 593-7335
 WWW.LSMINC.US
 surveys@lsminc.us
 KSS D0717 62800717 L-6280-3

THIS SURVEY WAS PREPARED IN THE ABSENCE OF
 A COMPLETE AND ACCURATE TITLE SEARCH AND
 DOES NOT GUARANTEE TITLE.

2 WORKING DAYS
BEFORE YOU DIG
 CALL TOLL FREE **800-362-2764**
 OHIO UTILITIES PROTECTION SERVICE.

INDEXED ON MAP
 9355 2