

Kikus Survey

Found iron pin Wedge
 Found Iron Pin O to Rd 3.21 ch
 from S line of Campbell's 1 1/2
 S 81° E 3.98 ch deducted
 15 hats for shortage in Campbell's land
 set iron pin on line of NE cor
 of Campbell and on NE. Cor of
 Kikus piece.

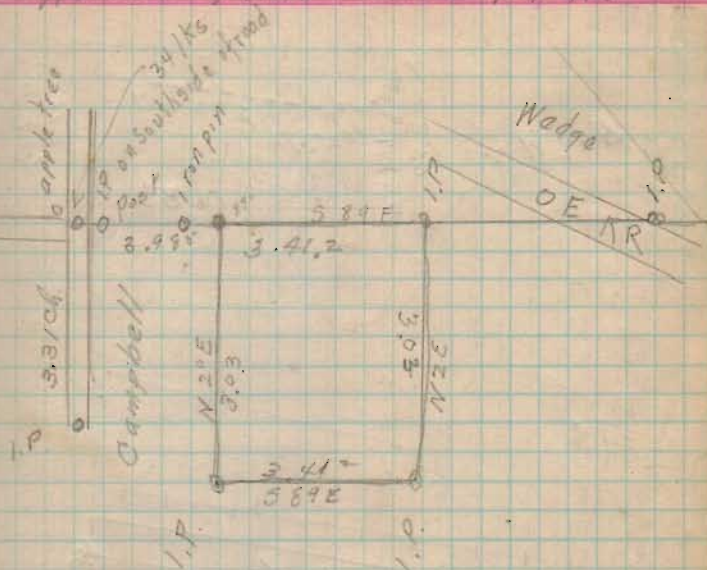
N 2° E 3.03 iron pin

S 89° E 3.41⁷

S 1 1/2 W 3.03

N 89 W ^{41°}
 3.49 ch

Russell Point Sec 1 T9 R8



1081

INDEXED ON MAP