

April - 25 - 1935 77
 Fine day
 F. Wright
 E. Core

Linco Oil station
 Russell's Point
 sec. 36 T. 6 R. 8.

A - Cross 25" west of Junt
 see Book 385 Page 4.
 " " D " 84

see Plan L-8 for S.H. 189

Use Survey Book 608
 Page 18-19

~~sec 11⁰⁰' = 1.0189~~

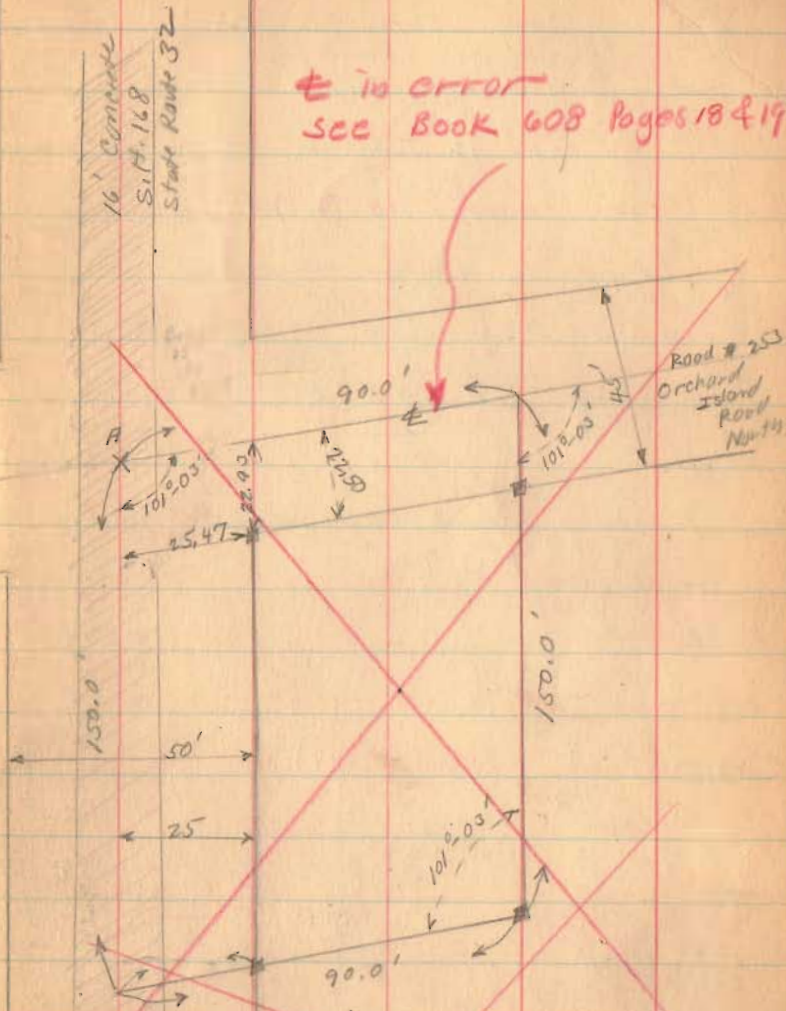
~~$1.0189 \times 22\frac{1}{2} = 22.93$~~

~~$1.0189 \times 25 = 25.47$~~

~~Tan 11⁰⁰' = .1953~~

~~$.1953 \times 25 = 4.88$~~

~~Coon Lumber Yard~~



~~is in error
 see Book 608 Pages 18 & 19~~

see Book 597 Page 65
 for Cambell to core

Also Book
 597 Pages
 73-74

1653

INDEXED ON MAP