

Cambell survey Russell's Point
 sec. 36 T.6 S. R.8 E.

- A - Lead Plug in concrete
- B - Hub
- C Hub
- D - Hub
- E - Concrete in Tile C
- ~~F 1" Pipe 4' Long~~
- ~~G 1" " " "~~
- ~~H₁ 1" " " "~~
- ~~I 1" " " "~~

ABCDE state Line

~~Cambell to Conn 110.0' x 90.0'~~

- ~~J chisel Cross in concrete~~
- ~~K " " " "~~
- ~~L " " " "~~
- ~~M " " " "~~

1746

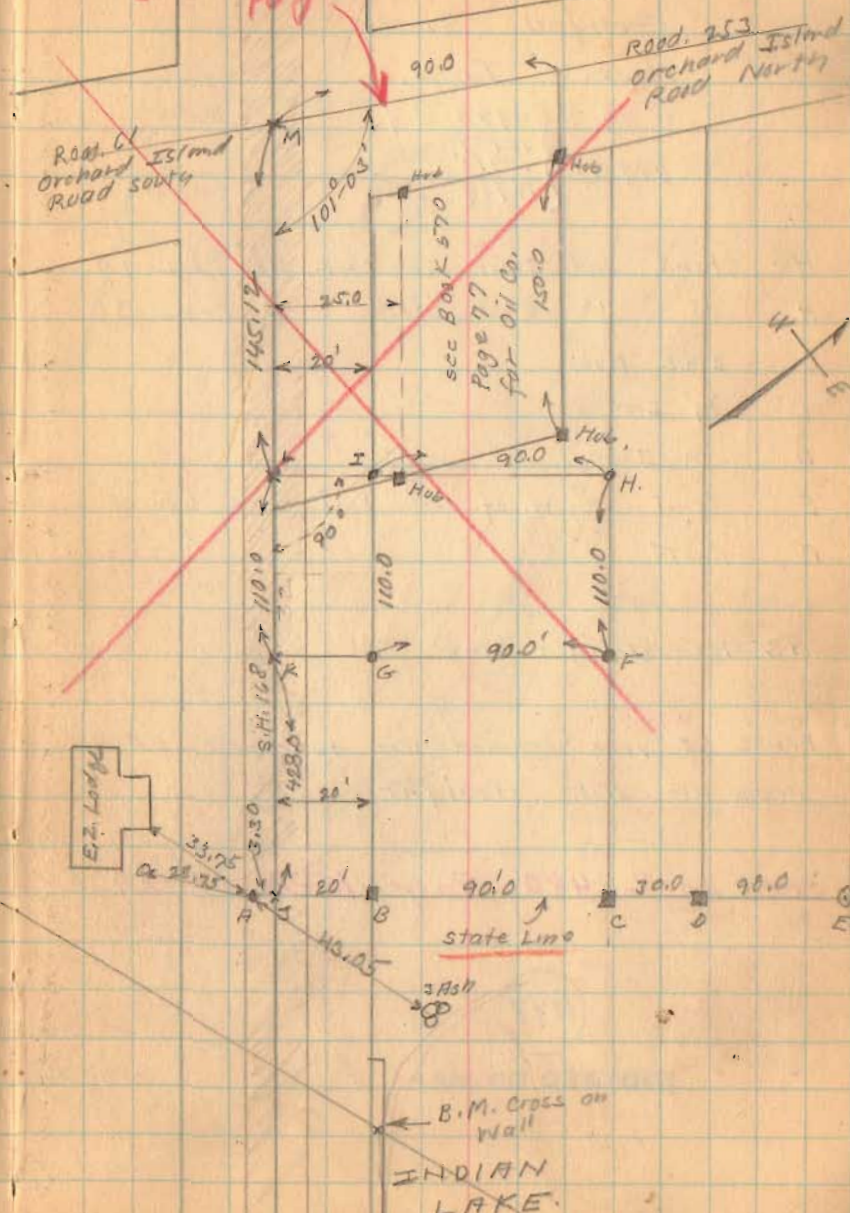
INDEXED ON MAP

65

Sept. 22, 1936
 Wain
 F. Wright
 G. Posey

~~E in error~~
~~See Book 608~~
~~Page 18&19~~

See later survey
 Page 73-74



Cambell survey Russells Point.

Use survey in BOOK 608
Page 18 & 19

S.S. Book 15 Page 44
Big Store 524
Lumber Co. 446
Russ Point 515
N. of D.
Oct. 13-36
F. Wright
N. Mountgomery
85' W. side Peck
40' Iron to S. side Peck

Oct - 10-1936 Rainy F. Wright
Checked from
H to M.

424.3
524.3

Total 683.1

This is ok. with
other notes.

1746

INDEXED ON MAP

10-3-36

74

ϕ in error
See BOOK 608
Page 18 & 19

