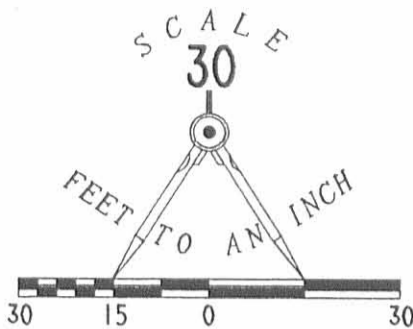


Received 6-4-96 okgch



CARDINAL ALLEY (15')

FAIRVIEW AVENUE

PARK AVENUE (35')

LOT 386

LOT 387

0.183 ACRE

LOT 388

LOT 410

S 70°15'23"E  
99.90'

N 19°35'11"E  
79.88'

S 19°35'11"W  
79.88'

N 70°15'23"W  
99.90'

REFERENCES

LOGAN COUNTY ENGINEER'S FILES:  
R-4752, R-176, R-5061  
FIELD BOOK 705, PAGE 3  
PLAT CABINET A, SLIDE 134

RETRACEMENT SURVEY OF LOTS 387 AND 388  
 SPRING GROVE ALLOTMENT  
 PLAT CABINET A, SLIDE 134  
 SECTION 36, TOWN 6, RANGE 8  
 VILLAGE OF RUSSELLS POINT  
 WASHINGTON TOWNSHIP  
 LOGAN COUNTY, OHIO

LEGEND

- 5/8" IRON ROD SET
- 5/8" IRON ROD FOUND
- ◎ 3/4" IRON ROD FOUND



SURVEYED BY:

*Jeffrey I. Lee*  
 JEFFREY I. LEE  
 PROFESSIONAL SURVEYOR 6359  
 MAY 30, 1996

ORIGINAL STAMP IN GREEN

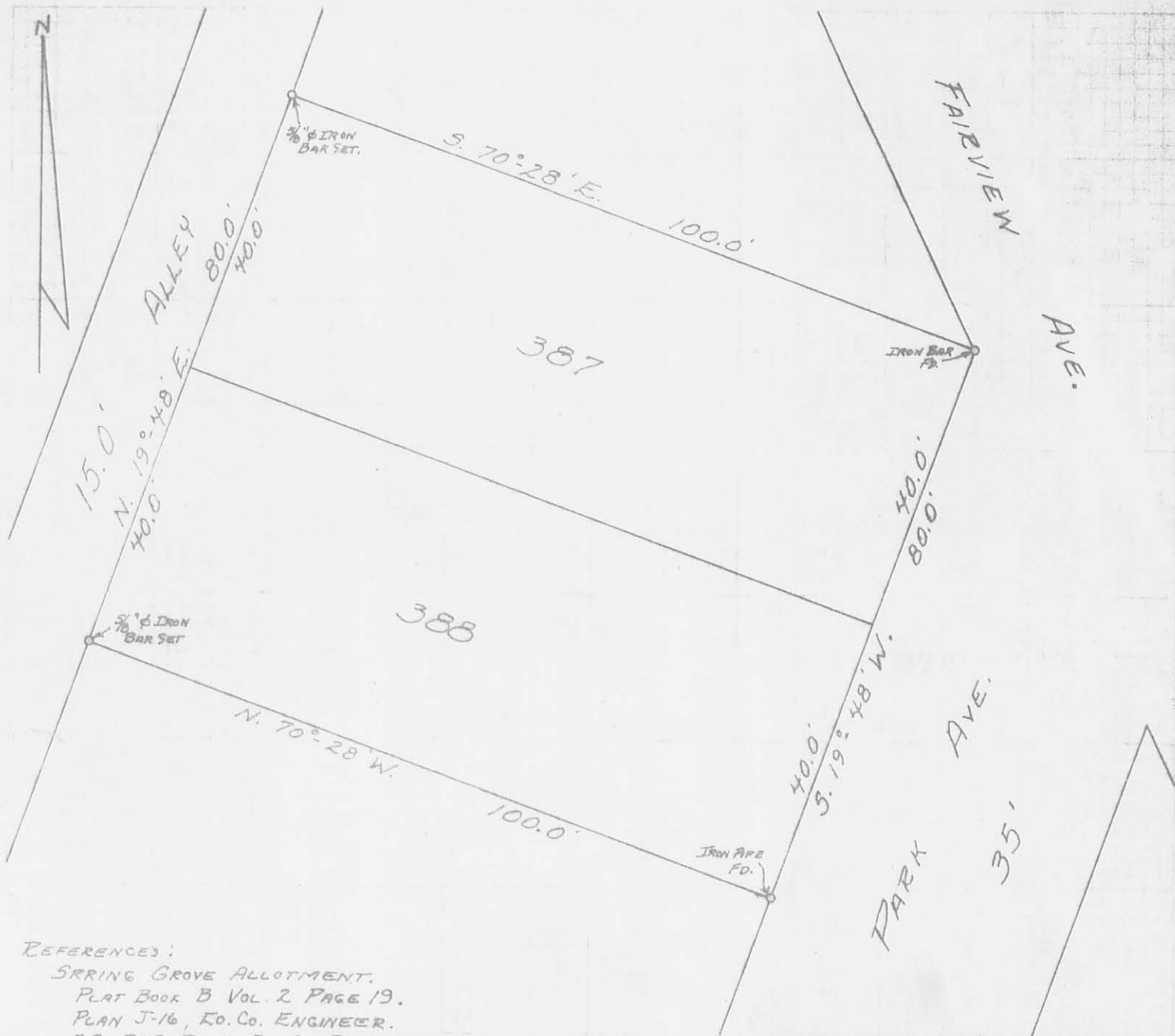
INDEXED ON MAP  
 4752 1P

COPYRIGHT 1996 BY:  
 LEE SURVEYING & MAPPING CO., INC.  
 143 East Columbus Avenue  
 BELLEFONTAINE, OHIO 43311  
 (513) 593-7335

2 WORKING DAYS  
**BEFORE YOU DIG**  
 CALL TOLL FREE **800-362-2764**  
 OHIO UTILITIES PROTECTION SERVICE.

D 284 NUTT

L-2409-4



REFERENCES:

SPRING GROVE ALLOTMENT,  
 PLAT BOOK B VOL. 2 PAGE 19.  
 PLAN J-16, CO. CO. ENGINEER.  
 F.B. 705 PL. 3, LO CO. ENGINEER.

SURVEYED AND PLATTED BY:  
 DANIEL E. GILBERT, P.S.  
 REG. SUR. NO. 5402  
 428 N. MADRIVER ST.  
 BELLEFONTAINE, OHIO 43311



4752 2P

INDEXED ON MAP

SURVEY OF LOTS 387-388  
 VILLAGE OF RUSSELLS POINT  
 SECTION 36 T.6S. R.8E.  
 WASHINGTON TOWNSHIP  
 LOGAN COUNTY, OHIO  
 OCTOBER 24, 1970  
 SCALE: 1" = 20'