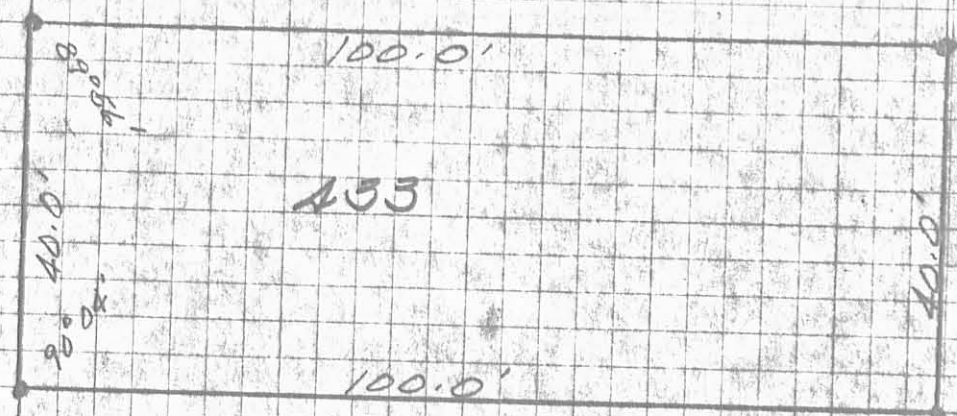




GRAND AVE. (40')



I HEREBY CERTIFY THAT THE ABOVE IS A PLAT OF A SURVEY MADE BY ME AND THAT THERE ARE NO ENCROACHMENTS.

431

SURVEY OF LOT 433  
RUSSELLS POINT  
LOGAN COUNTY, OHIO  
JUNE 9, 1975

Ref:  
PLAT BOOK B Pg. 19

● = 5/8" IRON BAR SET

5789 IP

INDEXED ON MAP

G.B. / 106 59

LESLIE H. GREEN  
REG. SURVEYOR 5248  
RUSHSVANIA, OHIO

NO. 55 4  
DIETZGEN PHOTO PRINT  
GRAPH PAPER  
5 x 5 PER INCH